



GEORGIA TECH WOMEN'S BASKETBALL

12 NCAA Tournament appearances /// NCAA Sweet 16 - 2021, 2012

2025-26 SCHEDULE

HOME 6-3 AWAY 1-5 NEUTRAL 0-2 **ACC** 2-3

Nov. 6 (Thu)	RADFORD	W, 82-36
Nov. 9 (Sun)	PRINCETON	L, 61-67
Nov. 13 (Thu)	CHARLESTON SOUTHERN	W, 87-40
Nov. 16 (Sun)	JACKSONVILLE	L, 64-69
Nov. 19 (Wed)	WEST GEORGIA	W, 68-60
Nov. 23 (Sun)	at Georgia	L, 59-87
Nov. 28 (Fri)	vs. St. John's&	L, 75-77
Nov. 29 (Sat)	vs. Florida&	L, 56-65
Dec. 3 (Wed)	at Texas A&M#	L, 63-72
Dec. 8 (Mon)	NORFOLK STATE	W, 72-57
Dec. 11 (Thu)	at RV/RV West Virginia	L, 50-82
Dec. 14 (Sun)	at Wake Forest*	L, 56-57
Dec. 18 (Thu)	at RV NC State*	L, 58-87
Dec. 28 (Sun)	WOFFORD	W, 79-63
Jan. 1 (Thu)	#18/18 NOTRE DAME*	W, 95-90 (OT)
Jan. 4 (Sun)	at SMU*	W, 67-59
Jan. 8 (Thu)	VIRGINIA*	L, 59-61
Jan. 11 (Sun)	CLEMSON*	4:00 p.m. ACCN
Jan. 18 (Sun)	at RV Duke*	6:00 p.m. ACCN
Jan. 22 (Thu)	#22/18 NORTH CAROLINA*	8:00 p.m. ACCN
Jan. 25 (Sun)	at Florida State*	4:00 p.m. ACCN
Jan. 29 (Thu)	at Syracuse*	6:00 p.m. ACCNX
Feb. 1 (Sun)	BOSTON COLLEGE*	2:00 p.m. ACCN
Feb. 5 (Thu)	CALIFORNIA*	7:00 p.m. ACCNX
Feb. 8 (Sun)	RV/RV STANFORD*	2:00 p.m. ACCNX
Feb. 12 (Thu)	at Clemson*	8:00 p.m. ACCN
Feb. 19 (Thu)	at Pittsburgh*	6:00 p.m. ACCNX
Feb. 22 (Sun)	at Virginia Tech*	2:00 p.m. ACCNX
Feb. 26 (Thu)	#10/11 LOUISVILLE*	6:00 p.m. ACCN
Mar. 1 (Sun)	MIAMI*	2:00 p.m. ACCNX
March 4-8	ACC Tournament	

Home games in BOLD

* - ACC Conference Game

! - ACC Tournament (Duluth, Ga.)

&- Cayman Islands Classic (George Town, Grand Cayman)

- ACC-SEC Challenge

Rankings - AP Top 25/USA Today Coaches Top 25

All times Eastern

TUNE IN TO THE ACTION



WATCH

ACC NETWORK EXTRA

PxP: Chuckie Kempf

Analyst: Angel Gray



RADIO

GEORGIA TECH YELLOW JACKETS APP

SIRIUSXM 993 AND ON THE SIRIUSXM APP

Richard Musterer

Kurt Hoyt

Georgia Tech (7-10, 2-3 ACC) vs. CLEMSON (12-5, 3-2 ACC)

Game 18 | Sunday, Jan. 11 | 4 p.m. ET | Atlanta, Ga. | McCamish Pavilion



YELLOW JACKETS

Head Coach: Karen Blair

Record at GT: 7-10 (First season)

Career Record: Same (First season)

AP: NR | COACHES: NR | NET: 96

TIGERS

Head Coach: Shawn Poppie

Record at CU: 26-22 (Second season)

Career Record: 74-40 (Fourth season)

AP: NR | COACHES: NR | NET: 39



STORYLINES

• Georgia Tech concludes a two-game ACC homestand Sunday against the rival Clemson Tigers inside McCamish Pavilion. The Jackets return to home court following a tough, two-point defeat at the hands of ACC unbeaten Virginia Thursday night, 61-59.

• Tech led after the first quarter but a strong second frame from UVA proved to be the difference, despite Tech outscoring UVA 13-8 in the fourth quarter. The Jackets were led in scoring once again by reigning ACC Player of the Week Talayah Walker (21).

• Walker added her fifth-straight game of 20 points, coming after her second-straight 30-point game Sunday at SMU, where she became the first Yellow Jacket since 1995 to score 30 in back-to-back games. She was also named AP Honorable Mention Player and to Autumn Johnson's Starting Five of the Week Tuesday. She leads the ACC with 23.4 points per game in conference games.

• Walker also had a second-straight double-double against the Mustangs, tallying 11 rebounds. She had 10 against Notre Dame. Her 33 points against the Fighting Irish remain the most by a player in ACC action this season. Her ACC weekly honor is the first of her career and first ACC Player of the Week honor for Tech since Dec. 2023. She is the only player in the ACC to have multiple 30-point games in conference, and her four ACC games of 20+ points are also a league-best. She is one of eight to have multiple double-doubles in league play this season,

• Another highlight for the Yellow Jackets has been the glass protection of Brianna Turnage. 'Snoop' has had 10 rebounds in three of the last four games and in four of the last six. Against Notre Dame, she had a rare non-points double-double with 13 rebounds and a career-high 10 assists. She had a career-high 17 rebounds on Dec. 28 vs. Wofford. Turnage is tied for the ACC lead with three games of 10+ boards in league play and is one of just five to have 10 assists in an ACC game this season.

• Selfless basketball has been one of the driving forces behind Tech's three-game win streak. Against Wofford on Dec. 28, the Yellow Jackets had 29 assists on 32 baskets, the most by any ACC team this season and the most by a Tech squad since the single-game record of 33 vs. Virginia in 2002.

• Tech has made a living on starting games strong this season. **The Yellow Jackets have out-scored teams 293-233 in the first quarter.** In first halves, Tech is outscoring teams 551-487.

• **The Yellow Jackets have out-rebounded teams 684-577 (+107) so far, including a +40 (350-310) rebounding margin in the second half.** The third quarter has been the primary spot for Tech's board protection with a +29 (189-159) margin. The Jackets average 30.4 defensive boards per game - second in the ACC and 13th nationally. **Full breakdown on Page 11**

• Offensively, the Georgia Tech bench has brought valuable production. Against Charleston Southern, Tech's bench erupted for a season-high 56 points (CSU game total: 40). The first quarter at Wake Forest marked the first time all season that the Jacket bench did not register a point. Tech posted 21 bench points to Notre Dame's 11 on Jan. 1. **This season, Tech's 27.4 bench points per game is third in the ACC and 34th in the nation.**

PROBABLE STARTERS (BASED OFF LAST GAME)			GP-GS	PPG	RPG	MPG	NOTES
0	G	Brianna Turnage (Sr., 6-1, Atlanta, Ga.)	17-15	4.5	8.6	25.0	Leads team with 17 blocks
3	G	Erica Moon (r-So., 5-6, Atlanta, Ga.)	17-17	4.5	3.0	25.5	Career-high 12 points vs. ND; played all 45 minutes
20	C	Ariadna Termis (Jr., 6-6, Zaragoza, Spain)	17-17	3.4	3.1	22.4	Second on team with 15 blocks this season
21	G	Talayah Walker (So., 5-10, Odenton, Md.)	17-17	16.5	6.3	29.5	Five-straight games with 20+ points
23	G	La'Nya Foster (Jr., 5-10, Riverdale, Ga.)	16-6	6.6	3.6	22.4	Season-high 22 points vs. Notre Dame
OFF THE BENCH							
5	G	Catherine Alben (Sr., 6-7, Snellville, Ga.)	17-1	11.1	3.1	24.1	18 points off the bench vs. Notre Dame
12	F	Jada Crawshaw (Jr., 6-0, Darwin, Australia)	13-0	7.1	4.0	15.8	50.7% from the floor this season
22	G	Inés Noguero (Sr., 5-11, Gijón, Spain)	4-4	8.3	5.5	24.1	Shooting 56% from the floor this season
32	G	D'Asia Thomas-Harris (Jr., G., Katy, Texas)	16-0	6.4	5.0	15.7	28-for-39 from the free throw line this season
33	G	Savannah Samuel (5th, 6-1, Woodstock, Ga.)	16-8	8.7	2.4	22.7	81.1% from the free throw line

QUICK FACTS

GENERAL

Full Name: Georgia Institute of Technology
 Location: Atlanta, Ga.
 Founded: 1885
 Enrollment: 53,067
 Nicknames: Ramblin' Wreck, Yellow Jackets
 Colors: Old Gold and White
 Arena (Cap.): McCamish Pavilion (8,600)
 President: Dr. Ángel Cabrera
 Athletics Director: Ryan Alpert
 Faculty Ath. Representative: Dr. Jenna Jordan
 Sport Administrator: Joeleen Akin

COACHING STAFF

Head Coach: Karen Blair
 Years at Tech: First
 X/Twitter: @CoachKarenBlair
 Career Record: 7-10 (.412)
 Record at Tech: 7-10/First Season
 Alma Mater: SMU, 1999
 Assistant Coach: Marsha Frese
 Assistant Coach: Chris Meadows, Sr.
 Assistant Coach: Ben Kantor
 Assistant Coach: Morgan Williams
 Asst. Coach/Dir. of Recruiting Ops: Caleb Currier
 Executive Dir. of BSK Ops/Player Mgmt: Chuck Terrell
 Director of WBB Ops: Liberty Crayton Del Rosario

TEAM INFORMATION

2024-25 Overall Record: 22-11
 2024-25 ACC Record: 9-9
 2024-25 Home Record: 14-4
 2024-25 Road Record: 5-5
 2024-25 Neutral Record: 3-2
 Letterwinners R/L: 3/9
 Starters R/L: 2/3
 Newcomers: 10

HISTORY

First Year: 1974-75 (52nd season)
 Overall Record: 803-716 (.529)
 ACC Record: 263-420 (.385)
 ACC Tournament Record: 23-46
 Postseason Record: 23-28 (NCAA, WBIT, WNIT & AIAW)
 NCAA Appearances/Last: 12, 2025
 NCAA Tournament Record: 7-12
 WBIT Record/Appearances: 0-1/1
 WNIT Record: 14-7
 All-Time Home Record: 438-243
 All-Time Road Record: 203-318
 All-Time Neutral Record: 93-94

ATHLETIC COMMUNICATIONS & PUBLIC RELATIONS

WBB Contact: Michael Pitts
 Email: mpitts@athletics.gatech.edu
 Cell Phone: 678-373-7093
 Press Row: 404-894-5458
 Website: www.ramblinwreck.com

It is incorrect to call it "Georgia Tech University."

Officially, it's The Georgia Institute of Technology.

2025-26 GEORGIA TECH WOMEN'S BASKETBALL ROSTER

Numerical

No.	Name	YR	HT	POS	Hometown	High School/Previous School
0	Brianna Turnage	Sr.	6-1	G	Atlanta, Ga.	Westlake HS/Florida State
1	McKayla Taylor	Fr.	6-3	C	Atlanta, Ga.	Langston Hughes HS
3	Erica Moon	r-So.	5-6	G	Atlanta, Ga.	St. Francis HS/Texas A&M
4	Leyre Urdiain	Fr.	5-11	G	Zaragoza, Spain	Sansuena
5	Catherine Alben	Sr.	5-7	G	Snellville, Ga.	Grayson HS/Charleston Southern
12	Jada Crawshaw	Jr.	6-0	F	Darwin, Australia	Barker College/Long Beach State
13	Déborah Mukeba	So.	6-5	C	Fleurus, Belgium	Winston-Salem Christian Academy/Boston College
20	Ariadna Termis	Jr.	6-6	C	Zaragoza, Spain	IES Joaquim Blume Barcelona
21	Talayah Walker	So.	5-10	G	Odenton, Md.	Our Lady of Good Counsel/Penn State
22	Inés Noguero	Sr.	5-11	G	Gijón, Spain	Joaquim Blume
23	La'Nya Foster	Jr.	5-10	G	Riverdale, Ga.	Lovejoy HS/Austin Peay
32	D'Asia Thomas-Harris	Jr.	6-2	G	Katy, Texas	Houston Christian
33	Savannah Samuel	5th	6-1	G	Woodstock, Ga.	St. Francis HS/Boston College

Alphabetical

No.	Name	YR	HT	POS	Hometown	High School/Previous School
5	Catherine Alben	Sr.	5-7	G	Snellville, Ga.	Grayson HS/Charleston Southern
12	Jada Crawshaw	Jr.	6-0	F	Darwin, Australia	Barker College/Long Beach State
23	La'Nya Foster	Jr.	5-10	G	Riverdale, Ga.	Lovejoy HS/Austin Peay
3	Erica Moon	r-So.	5-6	G	Atlanta, Ga.	St. Francis HS/Texas A&M
13	Déborah Mukeba	So.	6-5	C	Fleurus, Belgium	Winston-Salem Christian Academy/Boston College
22	Inés Noguero	Sr.	5-11	G	Gijón, Spain	Joaquim Blume
33	Savannah Samuel	5th	6-1	G	Woodstock, Ga.	St. Francis HS/Boston College
1	McKayla Taylor	Fr.	6-3	C	Atlanta, Ga.	Langston Hughes HS
20	Ariadna Termis	Jr.	6-6	C	Zaragoza, Spain	IES Joaquim Blume Barcelona
32	D'Asia Thomas-Harris	Jr.	6-2	G	Katy, Texas	Houston Christian
0	Brianna Turnage	Sr.	6-1	G	Atlanta, Ga.	Westlake HS/Florida State
4	Leyre Urdiain	Fr.	5-11	G	Zaragoza, Spain	Sansuena
21	Talayah Walker	So.	5-10	G	Odenton, Md.	Our Lady of Good Counsel/Penn State

Head Coach: Karen Blair (SMU, 1999), First Season

Assistant Coach: Marsha Frese (Rice, 1995), First Season

Assistant Coach: Chris Meadows, Sr. (St. Bonaventure, 1992), First Season

Assistant Coach: Ben Kantor (Illinois, 2006), First Season

Assistant Coach: Morgan Williams (Georgetown, 2012), First Season

Asst. Coach/Dir. of Recruiting: Caleb Currier (Tennessee, 2019), 3rd season as AC, 4th overall

Executive Dir. of Basketball Operations/Player Mgmt: Chuck Terrell (Pacific, 1994), First Season

Director of Operations: Liberty Crayton Del Rosario (Notre Dame, 2002), First Season

Director of Content and Creative Strategy: Nick Mancusi, First Season

Director of Video and Analytics: McIntyre Webb (Michigan State, 2014), First season

Director of Strength and Conditioning: Rachel Jones (Delaware, 2012), First season

Assistant Director of Sports Medicine: Rachel Stewart (NCCU, 2013), Ninth season

HOW TO SAY IT

Inés Noguero | e-nez no-RAY-doh
 Ariadna Termis | ari-AH-dna
 Talayah Walker | ta-LAY-ah
 D'Asia Thomas-Harris | Dee-Asia
 Leyre Urdiain | Lay-ray Oor-EE-dain

BY CLASS:

Fifth Years (1): Savannah Samuel
 Seniors (3): , Catherine Alben, Inés Noguero, Brianna Turnage
 Juniors (4): Jada Crawshaw, La'Nya Foster, Ariadna Termis, D'Asia Thomas-Harris
 Sophomores (3): Erica Moon (redshirt), Déborah Mukeba, Talayah Walker
 Freshmen (2): McKayla Taylor, Leyre Urdiain

BY STATE/COUNTRY:

Australia (1): Jada Crawshaw
 Belgium (1): Déborah Mukeba
 Georgia (6): Catherine Alben, La'Nya Foster, Erica Moon, Savannah Samuel, McKayla Taylor, Brianna Turnage
 Maryland (1): Talayah Walker
 Spain (3): Inés Noguero, Ariadna Termis, Leyre Urdiain
 Texas (1): D'Asia Thomas-Harris

BY POSITION:

Guards (8): Catherine Alben, La'Nya Foster, Erica Moon, Inés Noguero, Savannah Samuel, Brianna Turnage, Talayah Walker, Leyre Urdiain
 Forwards (1): Jada Crawshaw
 Center (3): Déborah Mukeba, McKayla Taylor, Ariadna Termis
 Guard/Forward (1): D'Asia Thomas-Harris

SERIES HISTORY VS. CLEMSON

Overall: 98th Meeting - Georgia Tech leads, 50-47

Current Streak: Clemson W1

Home Games: Georgia Tech leads, 25-17

Last: Jan. 19, 2025 (No. 17 GT won, 89-65)

Away Games: Clemson leads, 26-19

Last: Feb. 13, 2025 (Clemson won, 68-61)

Neutral Sites: Series tied, 4-4

Last Meeting: Feb. 13, 2025 (Clemson won, 68-61)

RECENT HISTORY VS. CLEMSON

Date	Location	Result	Score
Feb. 13, 2025	a	L	61-68
Jan. 19, 2025	h	W	89-65
Feb. 15, 2024	a	W	64-63
Jan. 11, 2024	h	W	70-62
Feb. 8, 2023	a	L	41-57
Jan. 26, 2023	h	W	85-74
Feb. 13, 2022	h	W	92-84 (OT)
Jan. 30, 2022	a	W	69-62
March 5, 2021	n	W	60-57
Feb. 4, 2021	h	W	71-69
Jan. 7, 2021	a	W	67-55
March 1, 2020	a	W	56-44
Jan. 12, 2020	h	W	49-47
Feb. 21, 2019	h	W	75-53
Jan. 17, 2019	a	L	61-71
Feb. 28, 2018	n	W	61-52
Feb. 4, 2018	a	W	60-48
Dec. 31, 2017	h	W	66-33
Feb. 23, 2017	h	W	72-58
Jan. 29, 2017	a	L	61-71
Feb. 14, 2016	h	W	77-48
Jan. 24, 2016	a	W	76-63
March 4, 2015	n	W	80-53
Feb. 22, 2015	a	W	71-59
Jan. 4, 2015	h	W	74-66
Jan. 30, 2014	h	L	79-80 (OT)
Jan. 8, 2014	a	W	89-68

HISTORY VS. CLEMSON

Brianna Turnage

Career: 3 GP, 2 GS, 60 min, 16 rebounds, 9 points

1/16/25 (at FSU): 5 min, 2 points (FSU won, 82-67)

3/3/24 (at FSU): GS, 26 min, 6 rebounds, 4 assists, 3 points (FSU won, 82-79)

1/7/24 (at FSU): GS, 29 min, 2-for-3 FG, 4 points, 10 rebounds, 1 assist, 1 steal (FSU won, 78-72)

Inés Noguero

Career: 3 GP/GS, 76 min, 18 points, 13 rebounds, 7 assists

1/11/24: GS, 33 min, 3-for-7 FG, 7 points, 3 rebounds, 2 assists, 2 steals (Clemson won, 70-62)

2/15/24: GS, 39 min, 5-for-12 FG, 11 points, 10 rebounds, 5 assists, 1 block (GT won, 64-63)

1/26/23: GS, 4 min (GT won, 85-74)

Ariadna Termis

Career: 3 GP, 2 GS, 37 min, 6 rebounds

2/13/25: GS, 17 min, 2 points, 1 rebound (Clemson won, 68-61)

1/19/25: GS, 18 min, 4 rebounds, 1 assist, 1 block (GT won, 89-65)

1/11/24: 2 min, 1 rebound (GT won, 70-62)

Catherine Alben

11/20/23 (at CSU): 31 min, 6-for-15 FG, 16 points, 5 rebounds, 2 assists, 5 steals (Clemson won, 85-55)

D'Asia Thomas-Harris

2/13/25: 2 min (Clemson won, 68-61)

2/15/24: 1 min (GT won, 64-63)

Savannah Samuel

2/2/25 (at BC): 18 min, 3-for-3 FG, 6 points, 1 rebound, 4 assists, 1 block, 1 steal (BC won 94-65)

JACKETS SHOW RESILIENCY AGAINST CAVS

Despite rallying back from multiple runs, Georgia Tech women's basketball dropped a tight game to Virginia, 61-59 on Jan. 8. The Yellow Jackets led 15-13 after the opening quarter but a strong second frame from the Cavaliers willed them to victory, despite Tech allowing just eight fourth quarter points.

Tech was once again led offensively by reigning ACC Player of the Week and AP Honorable Mention Player of the Week Talayah Walker, who scored 21 points with eight rebounds. It marked her fifth-straight game with at least 20 and a conference-leading fourth in league action this season. She and Brianna Turnage played every minute of the Jackets' fifth ACC game, with Turnage collecting nine points with seven rebounds and a career-high five steals.

TAY SCORES 30 IN SECOND-STRAIGHT WIN

Another masterclass on the court from Talayah Walker saw Georgia Tech women's basketball cruise to a 67-59 victory at SMU. Walker did not miss a first half shot and scored 11 in the final frame, en route to a third-straight victory and second-straight in ACC action for the Yellow Jackets. The Mustangs led 4-2 in the early seconds but would not lead again, as Tech scored 21 second-quarter points and outscored SMU 18-11 in the fourth. The Odenton, Md. native finished with her fourth-straight game scoring at least 20, and second straight scoring 30 (30). On top of that, she added 11 rebounds and a career-high seven steals.

Behind her was Catherine Alben's 12 points, including three triples in the second frame. Brianna Turnage joined Walker with 10 rebounds of her own. Jada Crawshaw entered off the bench and provided valuable minutes with nine points, five rebounds and half of Tech's blocks (4). La'Nya Foster had eight in both the points and rebounds category, continuing an impressive stretch of games for the Austin Peay transfer.

Tech shot 54.5% from the floor in the final 10 minutes and 83.3% from the charity stripe, the team's second-straight fourth quarter shooting above 50%. The victory marked the first road win under first-year head coach Karen Blair.

JACKETS STUN NO. 18 IRISH IN OVERTIME

Behind double-doubles from Talayah Walker and Brianna Turnage, Georgia Tech women's basketball completed an upset bid of No. 18 Notre Dame, 95-90, in overtime on the first day of 2026.

Head coach Karen Blair's Yellow Jackets led 16-14 after the first before Notre Dame took advantage of strong second and third periods but only led Tech 59-53 going into the fourth. In that final frame of regulation is where the Jackets made their mark, out-scoring the 18th-ranked team in the nation, 27-21, to send the game to overtime. The back-and-forth overtime period went in favor of Tech behind opportunistic defensive possessions, handing the Jackets their first ranked victory of the season and first ACC win of the Blair Era.

TEAM COMPARISON

Record	7-10	12-5
Conference Record	2-3	3-2
Points per game	67.7	70.6
Scoring Margin	1.3	14.5
FG Percentage	41.0	45.1
3-pt FG Percentage	26.8	34.7
3-pt FG Made Per Game	4.6	8.9
FT Percentage	70.8	65.5
Rebounds per game	42.6	37.0
Rebounding Margin	6.6	8.4
Assists Per Game	16.6	14.6
Turnovers Per Game	17.5	12.1
Turnover Margin per Game	-2.7	2.0
Steals Per Game	8.2	6.9
Blocks Per Game	3.9	2.7

WHAT'S AT STAKE

With a win...

- Tech improves to 8-10 on the season
- Tech improves to 7-3 at home
- Tech improves to 3-3 in ACC action
- Tech captures its 51st all-time win over Clemson
- Tech extends its home win streak over Clemson to 12
- Tech captures its 23rd win over Clemson in the last 28 meetings

With a loss...

- Tech falls to 7-11 on the season
- Tech falls to 6-4 at home
- Tech falls to 2-4 in ACC action
- Tech falls to 50-48 against Clemson all-time

STAR POWER

Back-to-Back 30-Point Games, Program History

Talah Walker Jan. 1, 2026 vs. Notre Dame (33)

..... Jan. 4, 2026 at SMU (30)

Carla Munnion Dec. 3, 1995 vs. Manhattan (34)

..... Dec. 13, 1995 vs. Chattanooga (35)

Joyce Pierce Jan. 26, 1993 vs. Clemson (30)

..... Jan. 29, 1993 vs. Duke (30)

Karen Lounsbury Jan. 21, 1989 vs. Virginia (30)

..... Jan. 25, 1989 vs. Mercer (34)

Back-to-Back 30-Point Games, Different Players

Kisha Ford Dec. 2, 1995 vs. New Hampshire (32)

Carla Munnion Dec. 3, 1995 vs. Manhattan (34)

Carla Munnion Dec. 13, 1995 vs. Chattanooga (35)

Note: only instance of three-straight 30-point performances for GT

Ida Neal Feb. 15, 1989 vs. Tennessee (35)

Karen Lounsbury Feb. 18, 1989 vs. NC State (30)

Most 30-Point ACC Games by a Jacket, Season

Talah Walker 2 2025-26

Dolores Bootz 2 1987-88

Karen Lounsbury 2 1988-89

Joyce Pierce 2 1992-93

Kisha Ford 2 1996-97

Tyaunna Marshall 2 2013-14

Kaela Davis 2 2014-15

Aaliyah Whiteside 2 2015-16

ACC & NCAA TEAM STAT RANKINGS

(As of Jan. 10, 2026)

Category	Value	NCAA	ACC
Scoring	67.7	174	14
Scoring Defense	66.4	230	15
Scoring Margin	1.3	199	14
FG%	41.0	163	14
3FG%	26.8	307	18
3FGs	4.6	304	18
3FG Attempts	17.1	287	15
FT%	70.8	163	9
Free Throws	13.2	103	3
Free Throw Attempts	18.7	114	5
FG% Defense	38.3	119	9
3FG% Defense	29.5	158	9
Rebounds/Game	42.6	32	5
Defensive Reb/Game	30.4	13	2
Offensive Reb/Game	12.2	178	11
Rebound Margin	6.6	58	6
Assists/Game	16.6	43	6
Turnovers/Game	17.5	223	17
Assist/TO Ratio	0.95	104	11
Turnovers Forced/Game	14.8	286	11

ACC & NCAA INDY STAT RANKINGS

(As of Jan. 10, 2026)

Player/Category	Value	NCAA Rank	ACC Rank
Erica Moon			
Total Assists	64	94	10
Assists/Game	3.8	157	12
Assist/TO Ratio	1.64	127	13
Brianna Turnage			
Total Rebounds	146	28	5
Rebounds/Game	8.6	66	6
Blocks/Game	1.00	194	15
Total Blocks	17	150	12
Talayah Walker			
FT Made	76	20	1
FT Attempts	95	27	3
Total Points	281	46	3
Points/Game	16.5	99	5
FT Percentage	80.0	143	7
FG Made	94	91	8
FT Attempts	202	105	9

LARGEST HOME CROWDS

1.	11/21/10	#1/1 UConn	L, 71-51	7,325
2.	2/8/95	#11/11 UNC	L, 84-62	6,621
3.	1/19/25	Clemson	W, 89-65	6,386
4.	12/5/08	Georgia	W, 57-42	6,212
5.	2/7/99	#9/11 Duke	L, 74-73	6,058
6.	11/11/12	#20/16 Tenn.	L, 54-71	5,517
7.	11/6/25	Radford	W, 82-36	5,467
8.	11/6/23	Coastal Carolina	W, 83-53	4,963
9.	12/9/21	#3/2 UConn	W, 57-44	4,587
10.	1/26/25	#14 Duke	L, 55-50	4,301
11.	1/23/93	#10 Virginia	L, 107-81	4,158
12.	2/21/93	Wake Forest	W, 85-72	4,136
13.	2/16/03	Virginia	L, 56-54	4,044
14.	1/26/02	Clemson	W, 83-78	3,965
15.	12/13/09	MVSU	W, 89-41	3,864
16.	1/20/96	#7/7 Virginia	L, 79-58	3,849
17.	1/8/04	#1/2 Duke	L, 45-77	3,833
18.	2/11/96	Wake Forest	W, 75-65	3,827
19.	2/18/99	#17/17 Virginia	L, 73-86	3,812
20.	2/23/25	Florida State	L, 73-70	3,809
21.	1/1/26	#18/18 Notre Dame	W, 95-90 (OT)	3,759
22.	11/4/24	Winthrop	W, 85-39	3,611
23.	1/13/03	#1/1 Duke	L, 59-79	3,592
24.	1/9/00	#14/10 Duke	L, 45-64	3,512
25.	2/27/94	Duke	W, 64-56	3,385

*McCamish Pavilion record

Tech rung in the new year with just its second victory over the Fighting Irish in program history and first since Dec. 13, 2020. Walker collected a career-high 33 points on 10-for-17 shooting and 12-for-14 from the free throw line – on top of 10 rebounds. The Odenton, Md. Native also had a new personal mark of six assists. Turnage's double-double came down the road less-traveled, with 13 rebounds and a career-best 10 assists.

Adding to that was La'Nya Foster, who added a season-high 22 points of her own, just two shy of her career-best. Erica Moon played all 45 minutes Thursday and added a personal-best of her own with 12 points. Catherine Alben entered off the bench with another double-figure game, scoring 18.

Thursday also marked the first victory over Notre Dame at home for the Ramblin' Wreck.

CAREER-BEST DAYS AGAINST THE TERRIERS

Georgia Tech wrapped up 2025 with a statement win over Wofford, 79-63, to close out the non-conference slate. Behind 44 point points (and only allowing 14), Tech surged to a 28-16 lead after one (on 81.3% shooting) and 48-27 at the half en route to the win.

Brianna Turnage led Tech with a career-high 17 rebounds, the most by a Jacket since Jan. 19, 2023. She also added a career-high seven assists. Erica Moon made her mark on home court Sunday, nearing a triple-double with career-highs in points (11), rebounds (8) and assists (9). Talayah Walker led Tech in scoring once again, posting a career-best 22 points – her third 20-point game in the last five. The Odenton, Md. Native also had seven rebounds.

Joining Moon and Walker in double figures scoring were La'Nya Foster (15), who started her third game this season. Jada Crawshaw entered off the bench and had 14 points with six rebounds in just 16 minutes of action. Georgia Tech had a season-high 29 assists on 32 made shots and shot 50.8% from the floor. It was the most by an ACC by this point in the season and the most by Tech since the record of 33 set against Virginia on Jan. 10, 2002.

WALKER DROPS 20 AGAINST WOLFPACK

Talayah Walker recorded her second 20-point game of the season (and of her career) against NC State, in addition to 18 points from Catherine Alben - who made her first start as a Yellow Jacket. La'Nya Foster also stood in for the starting lineup with eight rebounds (team-high).

Walker did not miss a shot in the first half and set a new career-high with four made treys.

HEARTBREAK IN WINSTON-SALEM

A foul called with less than five seconds left sent Wake Forest to the free throw line, allowing for their 57-56 victory at Georgia Tech's 2025-26 ACC opener on the road. Tech led 16-11 after the first and after the game evened at 25 for halftime, the Jackets outscored Wake Forest 18-17 in the third. A hard-fought game saw Tech out-rebounded the Deacs 47-32.

Talayah Walker led Tech in scoring (13) followed by 12 from Savannah Samuel. Brianna Turnage returned to form with 10 boards (team-high).

D'ASIA AND SAV SHINE IN WEST VIRGINIA

D'Asia Thomas-Harris led Tech with 14 points, followed by 13 from Savannah Samuel in the Jackets' 80-52 loss to RV/RV West Virginia. A gritty, defensive-centric opening half followed by a game-deciding 30-point third from the Mountaineers ended Tech's non-conference road slate for the 2025-26 campaign. Catherine Alben led the Jackets in rebounds (7).

CAREER DAY FOR TAY

Back inside McCamish Pavilion for the first time in 19 days, Georgia Tech posted a season-high 48 first-half points en route to a 72-57 defeat of Norfolk State on Dec. 8. The 48-28 halftime lead allowed the Jackets to fend off a fourth-quarter push from the Spartans, along with a career-best day for sophomore guard Talayah Walker.

Walker erupted for career-highs in points (20), rebounds (13)

GEORGIA TECH'S LAST 14 POSTSEASONS

YEAR	OVR	ACC TOURN.	POSTSEASON
2024-25	22-11	1-1 (R2)	NCAA 1st Round
2023-24	17-16	1-1 (R2)	WBIT
2022-23	13-17	0-1 (R1)	N/A
2021-22	21-11	1-1 (QF)	NCAA
2020-21	17-9	1-1 (SF)	NCAA Sweet 16
2019-20	20-11	1-1 (QF)	Canceled
2018-19	17-13	0-1 (R2)	Declined WNIT
2017-18	20-14	1-1 (R2)	WNIT 3rd Round
2016-17	22-15	1-1 (R2)	WNIT Runners-Up
2015-16	20-13	1-1 (QF)	WNIT 2nd Round
2014-15	19-15	1-1 (R2)	WNIT 2nd Round
2013-14	20-12	1-1 (QF)	NCAA 1st Round
2012-13	14-16	0-1 (R1)	N/A
2011-12	26-9	2-1 (CG)	NCAA Sweet 16

ACC PRESEASON AWARDS

Blue Ribbon Panel Preseason Player of the Year

Hannah Hidalgo - Jr., G, Notre Dame

2025-26 Blue Ribbon Panel Preseason All-ACC Team

Hannah Hidalgo, Jr., G, Notre Dame
 Zoe Brooks, Jr., G, NC State
 Kymora Johnson, Jr., G, Virginia
 Toby Fournier, So., F, Duke
 Ashlon Jackson, Sr., G, Duke
 Tajanna Roberts, So., G, Louisville
 Khamil Pierre, Jr., F, NC State
 Reniya Kelly, Sr., G, North Carolina
 Nunu Agara, Jr., F, Stanford
 Laura Ziegler, Sr., F, Louisville

2025-26 Blue Ribbon Panel Newcomer Watch List

Emilee Skinner, G, Duke
 Hailee Swain, G, Stanford
 Nyla Brooks, G, North Carolina
 Lara Somfai, F, Stanford
 Aliyahna "Puff" Morris, G, California
 Leah Macy, F, Notre Dame

ACC CAREER LEADERBOARD

Games Played

Rk	Student-Athlete	Team	GP	NCAA Rk
1.	Allie Kubek	Florida State	135	9th
2.	Ra Shaya Kyle	Miami	130	17th
3.	Tyi Skinner	SMU	129	19th
4.	Demearea Hinds	Clemson	128	21st
5.	Romi Levy	Virginia	126	26th
6.	Nyla Harris	UNC	121	45th
	Caitlin Weimar	Virginia	121	45th
8.	Jasmine Shavers	Florida State	120	47th
	Taina Mair	Duke	120	50th
10.	Indya Nivar	UNC	119	60th
	Ashlon Jackson	Duke	119	60th
12.	Savannah Samuel	GT	117	76th
	Vanessa de Jesus	Notre Dame	117	76th

Points Scored

Rk	Student-Athlete	Team	Pts	NCAA Rk
1.	Hannah Hidalgo	Notre Dame	1,921	5th
2.	Tyi Skinner	SMU	1,851	8th
3.	Rachael Rose	Clemson	1,828	10th
4.	Laura Ziegler	Louisville	1,602	26th
5.	Caitlin Weimar	Virginia	1,553	35th
6.	Jasmine Shavers	Florida State	1,534	40th
7.	Laila Phelia	Syracuse	1,492	45th
8.	Ra Shaya Kyle	Miami	1,454	52nd
9.	Iyana Moore	Notre Dame	1,445	55th
10.	Allie Kubek	Florida State	1,394	62nd
11.	Catherine Alben	GT	1,366	73rd

ACC WEEKLY AWARDS

Monday, Nov. 10**Player:** Hannah Hidalgo, Notre Dame (Jr. - Guard)**Rookie:** Lara Somfai, Stanford (Fr. - Forward)**Monday, Nov. 17****Player:** Hannah Hidalgo, Notre Dame (Jr. - Guard)**Rookie:** Puff Morris, California (Fr. - Guard)**Monday, Nov. 24****Player:** Nunu Agara, Stanford (Jr. - Forward)**Rookie:** Nyla Brooks, North Carolina (Fr. - Guard)**Monday, Dec. 1****Player:** Indya Nivar, North Carolina (Sr. - Guard)**Rookie:** Uche Izoje, Syracuse (Fr. - Center)**Monday, Dec. 8****Player:** Hannah Hidalgo, Notre Dame (Jr. - Guard)**Rookie:** Uche Izoje, Syracuse (Fr. - Center)**Monday, Dec. 15****Co-Players:** Courtney Ogden, Stanford (Jr. - Forward) & Laura Ziegler, Louisville (Sr. - Forward)**Rookie:** Lara Somfai, Stanford (Fr. - Forward)**Monday, Dec. 22****Player:** Kymore Johnson, Virginia (Jr. - Guard)**Rookie:** Uche Izoje, Syracuse (Fr. - Center)**Monday, Dec. 29****Player:** Grace Oliver, Wake Forest (So. - Forward)**Rookie:** Lara Somfai, Stanford (Fr. - Forward)**Monday, Jan. 5****Player:** Talayah Walker, Georgia Tech (So. - Guard)**Rookie:** Uche Izoje, Syracuse (Fr. - Center)**Monday, Jan. 12****Player:** TBA**Rookie:** TBA**Monday, Jan. 19****Player:** TBA**Rookie:** TBA**Monday, Jan. 26****Player:** TBA**Rookie:** TBA**Monday, Feb. 2****Player:** TBA**Rookie:** TBA**Monday, Feb. 9****Player:** TBA**Rookie:** TBA**Monday, Feb. 16****Player:** TBA**Rookie:** TBA**Monday, Feb. 23****Player:** TBA**Rookie:** TBA**Monday, March 2****Player:** TBA**Rookie:** TBA

and assists (5), while accruing her first collegiate double-double (and the third-straight game for a Yellow Jacket). She played every minute of Tech's victory over the Spartans.

Joining Walker in double figures were Catherine Alben (season-high 20 points), Savannah Samuel (11) and D'Asia Thomas-Harris (10). La'Nya Foster made her first start as a Yellow Jacket and had eight rebounds. Erica Moon tied Walker for the team-high five assists.

WELCOME HOME, D'ASIA

Returning to her home state of Texas, D'Asia Thomas-Harris recorded just the second double-double of her career and the second by a Jacket this season with 12 points and a team-high 10 rebounds at Texas A&M. Talayah Walker led the Jackets in scoring with 17.

Georgia Tech led at the half against the Aggies in this ACC-SEC Challenge game, but a third-quarter push from the home team proved to be the difference in the 72-63 decision.

PARADISE MAKES A DIFFERENCE

Flipping the script from fast starts and slower third quarters, the Jackets trailed early to St. John's in game one of the Cayman Islands Classic before rising to take a 58-55 lead going into the fourth. The Red Storm took a slim lead in the closing stages of the game and held on to take the win.

18 points apiece from Alben and Walker led the way for Tech, including 11 from Thomas-Harris who recorded the first trey of her career, on a 3-for-5 clip from beyond the arc. Moon's seven assists led Tech and were the most by a Yellow Jacket in a game at this point.

The next night, Tech led after the first quarter against the Florida Gators before the SEC squad posted solid second and third quarters to take the lead. A late, 24-point fourth-quarter rally got Tech close but the Jackets were unable to topple the Gators, 65-56. Savannah Samuel posted the first double-double by a Yellow Jacket this season (14 points, career-high 10 rebounds) and was joined by Talayah Walker (11 points) and Cayman Islands Classic All-Tournament Team selection Catherine Alben (10 points) in double figures.

It marked Georgia Tech's first-and-second ever games in the Cayman Islands and 31st and 32nd international games overall.

RIVALRY RENEWED

Clean, Old-Fashioned Hate returned to Athens, Ga. on Nov. 23, where the Yellow Jackets led 16-11 after the first quarter but were dealt a tough defeat to rival Georgia, 59-87, for the program's first road game of the season.

Three Jackets finished in double figures, led by Samuel and Alben who had 12 each. Crawshaw added 10 of her own with a career-high four steals.

SAV MAKES A STATEMENT

Savannah Samuel's first start as a Yellow Jacket on Nov. 19 vs. West Georgia saw her lead the team with 15 points in Tech's 68-60 victory. She was one of four Jackets to reach double figures, joined by 11 points apiece from Jada Crawshaw, La'Nya Foster and D'Asia Thomas-Harris. Brianna Turnage once again led the team in boards (11) and assists (5) in the win.

Tech rolled out to a 25-12 lead after one and 44-22 at halftime before a second-half surge from West Georgia closed the gap. The Wolves got as close as five points in the late stages before the Jacket defense slammed the door and secured the victory.

The win marked Tech's eighth-straight win over a DI program from the state of Georgia, the 12th of its last 13th game against an in-state foe and 13th of its last 15.

TOUGH THIRD QUARTER VERSUS DOLPHINS

An aggressive approach on both sides of the ball from Jacksonville resulted in Tech's second defeat of the early season on Nov. 16. A 25-point third quarter from JU was the difference, leading to a 69-64 decision.

Walker once again led Tech in points (15), joined by Turnage (10), who finished a rebound shy of her first double-double in a Yellow

2025-26 OPPONENTS RECORDS

Game	Opponent	Record at Game/Current Record
1	Radford	0-1/9-7
2	Princeton	0-0/12-1
3	Charleston Southern	0-3/3-11
4	Jacksonville	2-1/10-4
5	West Georgia	2-1/9-5
6	Georgia	6-0/14-1
7	St. John's	5-1/13-3
8	Florida	7-1/12-4
9	Texas A&M	5-1/7-3
10	Norfolk State	4-6/5-10
11	West Virginia	8-2/12-2
12	Wake Forest	9-2/12-5
13	NC State	7-4/11-5
14	Wofford	5-7/6-8
15	Notre Dame	10-2/11-4
16	SMU	7-8/7-9
17	Virginia	12-3/13-3
18	Clemson	12-5/12-5
19	Duke	/10-6
20	North Carolina	/13-4
21	Florida State	/5-11
22	Syracuse	/13-3
23	Boston College	/4-14
24	California	/9-8
25	Stanford	/14-3
26	Clemson	/12-5
27	Pittsburgh	/8-9
28	Virginia Tech	/12-5
29	Louisville	/15-3
30	Miami	/10-6
Overall		101-48/299-170

WINS AGAINST RANKED FOES

Jan. 6, 1987	#13 Maryland	H	81-80 (OT)
Jan. 21, 1989	#13 Virginia	H	105-80
Jan. 2, 1990	#6 NC State	H	79-78
Jan. 18, 1990	#15 Maryland	H	70-68
Jan. 17, 1992	#16 NC State	H	83-72
Feb. 4, 1992	at #18 Clemson	A	59-57
March 7, 1992	vs. #4 Maryland	N	68-67
March 8, 1992	vs. #18 Clemson	N	74-73
Jan. 15, 1993	#15 North Carolina	H	73-63
Jan. 25, 1996	#18 Clemson	H	55-38
Feb. 25, 1996	at #17 Clemson	A	72-62
Jan. 5, 1997	#7 NC State	H	73-72
Feb. 13, 1997	#9 Virginia	H	72-60
Dec. 6, 1997	#9 Virginia	H	84-65
Dec. 5, 1998	at #17/14 NC State	A	74-73
Jan. 24, 1999	#7/6 North Carolina	H	91-84
Jan. 13, 2000	#15/12 North Carolina	H	55-44
Feb. 24, 2000	at #14/11 NC State	A	69-52
March 4, 2000	vs. #15/14 NC State	N	71-62
Jan. 7, 2001	#25 Virginia	H	70-65
Feb. 8, 2001	at #24 Virginia	A	87-70
Jan. 17, 2002	at #17/15 North Carolina	A	81-62
Dec. 27, 2002	vs. #24/22 Georgia	N	55-49
Dec. 3, 2004	#6/6 Georgia	H	55-49
Feb. 1, 2007	#4/4 Maryland	H	77-72
Dec. 3, 2008	#21/24 Michigan St.	H	70-57
Jan. 22, 2009	#2/3 North Carolina	H	66-62
March 1, 2009	#22/19 Virginia	H	74-66
Dec. 5, 2010	#21/22 Georgia	H	69-53
Jan. 6, 2011	#8/8 North Carolina	H	71-70
Feb. 24, 2011	at #13/16 North Carolina	A	64-57
March 4, 2011	vs. #13/15 Maryland	N	70-64
Feb. 12, 2012	at #23/RV North Carolina	A	56-64
March 20, 2012	vs. #17/16 Georgetown	N	76-64
Feb. 6, 2014	#13/11 North Carolina	H	94-91
Feb. 26, 2015	#16/17 Duke	H	71-62
Jan. 15, 2017	#24 Syracuse	H	75-66
Nov. 18, 2018	#14 Georgia	H	63-53
Jan. 20, 2019	#12/12 Syracuse	H	65-55
Jan. 2, 2020	#23/RV Miami	H	61-54
Jan. 9, 2020	#11/11 Florida State	A	67-52
Feb. 16, 2020	#4/4 NC State	A	65-61
Feb. 23, 2020	#17/18 Florida State	H	65-62
March 23, 2021	#17/20 West Virginia	N	73-56
Dec. 5, 2021	#20/19 Georgia	A	55-54
Dec. 9, 2021	#3/2 UConn	H	57-44
Jan. 23, 2022	#20 North Carolina	H	55-38
Feb. 2, 2023	#15/13 NC State	H	68-62
Nov. 26, 2024	#21/25 Oregon	N	74-58
Dec. 15, 2024	#14/14 North Carolina	A	82-76
Dec. 21, 2024	#23/RV Nebraska	H	72-61
Jan. 1, 2026	#18/18 Notre Dame	H	95-90 (OT)

TOP 25 POLLS

ASSOCIATED PRESS

(Week 9)

1	UConn
2	Texas
3	South Carolina
4	UCLA
5	Oklahoma
6	Kentucky
7	Vanderbilt
8	Maryland
9	Michigan
10	Louisville
11	Iowa State
12	LSU
13	TCU
14	Iowa
15	Michigan State
16	Baylor
17	Texas Tech
18	Ole Miss
19	Ohio State
20	Tennessee
21	USC
22	North Carolina
23	Washington
24	Princeton
25	Nebraska

USA TODAY COACHES

(Week 9)

1	UConn
2	Texas
3	South Carolina
4	UCLA
5	Oklahoma
6	Vanderbilt
7	Kentucky
8	Maryland
9	Michigan
10	TCU
11	Louisville
12	LSU
13	Iowa State
14	Iowa
15	Michigan State
16	Baylor
17	Ole Miss
18	North Carolina
19	Ohio State
20	Texas Tech
21	USC
22	Tennessee
23	Washington
24	Alabama
25	Notre Dame

Bold = 2025-26 Opponent

TECH IN THE POLLS

WEEK OF AP COACHES

Preseason	NR	N/A
Nov. 10	NR	NR
Nov. 17	NR	NR
Nov. 24	NR	NR
Dec. 1	NR	NR
Dec. 8	NR	NR
Dec. 15	NR	NR
Dec. 22	NR	NR
Jan. 5	NR	NR
Jan. 12		
Jan. 19		
Jan. 26		
Feb. 2		
Feb. 9		
Feb. 16		
Feb. 23		

OPPONENT RANK HISTORY

Game	Opponent	Weeks Ranked	Highest Rank
1	Radford		
2	Princeton	3/--	24th/RV
3	Charleston So.		
4	Jacksonville		
5	West Georgia		
6	Georgia		R/RV
7	St. John's		
8	Florida		
9	Texas A&M		
10	Norfolk State		
11	West Virginia	3/2	21st/20th
12	Wake Forest		
13	NC State	4/4	9th/9th
14	Wofford		
15	Notre Dame	8/8	15th/17th
16	SMU		
17	Virginia		/RV
18	Clemson		
19	Duke	2/2	7th/11th
20	North Carolina	9/8	11th/8th
21	Florida State		
22	Syracuse		
23	Boston College		
24	California		
25	Stanford		R/RV
26	Clemson		
27	Pittsburgh		
28	Virginia Tech		
29	Louisville	9/8	10th/11th
30	Miami		

(AP/Coaches)

Jacket uniform. The Jackets collected 52 rebounds to JU's 39 and delivered 42 points in the paint against the Dolphins.

SHIP SINKERS

After dropping a hard-fought game to Princeton, 67-61, on Nov. 9, the Jackets returned to McCamish Pavilion on Nov. 13 and took out frustrations on Charleston Southern, 87-40. Jumping out of the gate immediately 25-8 in the first quarter, Tech limited the Bucs to just 23.4% from the floor on top of a 56-point performance from the bench. Talayah Walker led the way offensively with a career-high 19 points. She was one of five Jackets to score at least 10. Brianna Turnage had her third 10+-rebound performance in as many games with a career-best 13. She also led the team in assists with a career-tying six.

The Yellow Jackets also shot a season-high 10 three's on another season-high of 45.5% shooting.

BATTLE-TESTED VS. PRINCETON

A back-and-forth showdown against 2025 NCAA Tournament team took center stage in McCamish Pavilion on Nov. 9. Tech forced the Tigers to start 0-for-9 from three and out-rebounded the Tigers, but a fourth-quarter rally from the 2026 Ivy League preseason favorite proved to be the difference.

Alben and Noguero led Tech with 15 and 13 points, respectively. Turnage led Tech with 10 rebounds, her second-straight game in double figures to open the season.

WON-AND-ZERO

The Karen Blair Era opened in style on Nov. 6, when the Yellow Jackets took down Radford, 82-36, for 'Education Day' inside McCamish Pavilion. After a tight first quarter and only up by three, the Tech defense rose to the challenge and did not allow a single basket in the second quarter - the first scoreless defensive quarter in program history - holding the Highlanders to 0-for-12 from the floor. GT outscored Radford 69-26 in the final 30 minutes of game time and out-rebounded the Highlanders 51-23 in the game.

The victory marked the 13th-straight home-opening win for Tech and the fewest points allowed in a head coach's debut game in program history.

Talah Walker led the charge with 16 points while Brianna Turnage led the team in rebounds (11) and Erica Moon in assists (6).

HOME SWEET HOME

All time, the Yellow Jackets are 438-242 (.644) when playing at home. The Jackets have won the last 14 of the last 16 non-conference games at McCamish Pavilion dating back to the 2024-25 season. The Jackets opened the 2025-26 season with an 82-36 throttling of Radford to get that mark to double digits. Since 2020-21, Georgia Tech is 32-6 inside the friendly confines of McCamish Pavilion when facing non-conference opponents, and is 20-3 since 2023-24.

FAMILIAR FOES

The 2025-26 slate for the Yellow Jackets is not without its fair share of reunions. Six different Yellow Jackets - including head coach Karen Blair - square off against familiar opponents.

Thursday, Nov. 13: Charleston Southern at Georgia Tech

Senior Catherine Alben transferred in from Charleston Southern in the offseason.

Georgia Tech wins, 87-40 (Alben: 17 points, 6 rebounds)

Wednesday, Dec. 3: Georgia Tech at Texas A&M

R-Sophomore Erica Moon transferred in from Texas A&M in the offseason.

Texas A&M wins, 72-63 (Moon: 5 rebounds, 3 assists)

Thursday, Dec. 11: Georgia Tech at West Virginia

Fifth year Savannah Samuel played at WVU from 2021-23.

WVU wins, 80-52 (Samuel: 13 pts)

GAMES LEADING GEORGIA TECH

Scoring (Including Ties)

Talahay Walker	12	last: Jan. 8 vs. UVA (21)
Catherine Alben	4	last: Dec. 8 vs. NSU (20)
Savannah Samuel	3	last: Nov. 29 vs. Florida (14)
D. Thomas-Harris	1	last: Dec. 11 at WVU (14)

Rebounding (Including Ties)

Brianna Turnage	8	last: Jan. 1 vs. ND (13)
Catherine Alben	2	last: Dec. 11 at WVU (7)
Talahay Walker	2	last: Jan. 8 vs. UVA (8)
Inés Noguero	1	last: Nov. 16 vs. JU (10)
Savannah Samuel	1	last: Nov. 29 vs. Florida (10)
D. Thomas-Harris	1	last: Dec. 3 at Texas A&M (10)
La'Nya Foster	1	last: Dec. 18 at NC State (8)

Assists (Including Ties)

Erica Moon	7	last: Jan. 8 vs. UVA (3)
Brianna Turnage	5	last: Jan. 8 vs. UVA (3)
Catherine Alben	4	last: Jan. 8 vs. UVA (3)
Ariadna Termis	3	last: Nov. 29 vs. Florida (3)
Talahay Walker	1	last: Dec. 8 vs. NSU (5)

2025-26 GAMES WITH

30+ Points

Talahay Walker	2	last: Jan. 4 at SMU (30)
----------------	---	--------------------------

20+ Points

Talahay Walker	6	last: Jan. 8 vs. UVA (21)
Catherine Alben	1	last: Dec. 8 vs. NSU (20)
La'Nya Foster	1	last: Jan. 1 vs. ND (22)

10+ Points

Talahay Walker	13	last: Jan. 8 vs. UVA (21)
Catherine Alben	10	last: Jan. 4 at SMU (12)
Savannah Samuel	8	last: Dec. 14 at WF (12)
D. Thomas-Harris	5	last: Dec. 11 at WVU (14)
Jada Crawshaw	4	last: Dec. 28 vs. Wofford (14)
La'Nya Foster	4	last: Jan. 1 vs. ND (22)
Erica Moon	2	last: Jan. 1 vs. ND (12)
Inés Noguero	1	last: Nov. 9 vs. Princeton (13)
Brianna Turnage	1	last: Nov. 16 vs. JU (10)

10+ Rebounds

Brianna Turnage	8	last: Jan. 4 at SMU (10)
Talahay Walker	3	last: Jan. 4 at SMU (11)
D. Thomas-Harris	2	last: Dec. 3 at Texas A&M (10)
Inés Noguero	1	last: Nov. 16 vs. JU (10)
Savannah Samuel	1	last: Nov. 29 vs. Florida (10)

5+ Assists

Erica Moon	5	last: Jan. 1 vs. ND (6)
Brianna Turnage	4	last: Jan. 1 vs. ND (10)
Talahay Walker	2	last: Jan. 1 vs. ND (6)
Ariadna Termis	1	last: Nov. 9 vs. Princeton (5)
Catherine Alben	1	last: Dec. 3 at Texas A&M (5)

3+ Steals

Talahay Walker	4	last: Jan. 4 at SMU (7)
Brianna Turnage	3	last: Jan. 8 vs. UVA (5)
Erica Moon	2	last: Nov. 28 vs. St. John's (3)
D. Thomas-Harris	1	last: Nov. 19 vs. UWG (3)
Jada Crawshaw	1	last: Nov. 23 at Georgia (4)
Catherine Alben	1	last: Dec. 8 vs. NSU (3)

RECORD WHEN...

At home	6-3
On road	1-5
Neutral	0-2
Against ranked teams	1-0
In games decided by 3 pts or less	0-3
In games decided by 4-5 pts	1-1
In games decided by 6-10 pts	2-3
In games decided by 11-20 pts	2-0
In games decided by 21+ pts	2-3
Leading at half	6-3
Tied at half	0-1
Trailing at half	1-6
Leading with 10:00 remaining	6-3
Trailing with 10:00 remaining	1-7
Leading with 5:00 remaining	6-2
Trailing with 5:00 remaining	1-8
GT shoots 40% or better	7-2
GT shoots less than 40%	0-8
GT shoots same/better than opp.	7-2
Opp. shoots 40% or better	1-5
Opp. shoots less than 40%	6-5
GT out-rebounds opp.	7-6
Opp. out-rebounds GT	0-4
Teams tied in rebounding	0-0
GT shoots 70% or better on FT's	4-6
GT has more/same FT attempts	7-6
Opp. has more FT attempts	0-4
GT shoots 30% or better on 3pt	4-3
GT shoots less than 30% on 3pt	3-6
Opp. shoots 30% or better on 3pt	3-6
Opp. shoots less than 30% on 3pt	4-3
GT has more/same TO than opp.	5-7
GT scores 90+ pts	1-0
GT scores 80-89 pts	2-0
GT scores 70-79 pts	2-1
GT scores 60-69 pts	2-3
GT scores 50-59 pts	0-6
GT scores less than 50 pts	0-0
Opp. scores 90+ pts	1-0
Opp. scores 80-89 pts	0-3
Opp. scores 70-79 pts	0-2
Opp. scores 60-69 pts	2-4
Opp. scores 50-59 pts	2-1
Opp. scores less than 50 pts	2-0
On Mondays	1-0
On Tuesdays	0-0
On Wednesdays	1-1
On Thursdays	3-3
On Fridays	0-1
On Saturdays	0-1
On Sundays	2-4
In November	3-5
In December	2-4
In January	2-1
In February	0-0
In March	0-0
In Overtime	0-0
In Specialty Uniforms	0-0
In Gold Uniforms	1-2
In Navy Uniforms	0-4
In White Uniforms	6-4

Sunday, Jan. 4: Georgia Tech at SMU

Head coach Karen Blair graduated from SMU in 1999, played point guard for three seasons

Georgia Tech wins, 67-59

Sunday, Jan. 25: Georgia Tech at Florida State

Senior Brianna Turnage transferred from Florida State.

Sunday, Feb. 1: Boston College at Georgia Tech

Fifth year Savannah Samuel and sophomore Déborah Mukeba transferred from Boston College.

51 YEARS OF PRESTIGE

Last year, Georgia Tech celebrated the 50th anniversary of women's basketball on The Flats during the 2024-25 season. Tech's first varsity female sports team, women's basketball started in 1974-75 and has amassed 799 wins since. In 50 seasons, Georgia Tech has made 12 NCAA Tournament appearances, eight WNIT appearances, and seven GAIW State Tournaments. The Yellow Jackets made their first postseason appearance in school history in 1992 and won the NWIT in Amarillo, Texas. The win also marked the first NWIT title for an ACC school. Tech made its first NCAA Tournament appearance in 1992-93. The Jackets didn't return for 10 years, making its next trip in 2003, but then participated in every Big Dance from 2007-2012. In 2012, Tech made its first-ever run to the Sweet 16. The Jackets would return to the Sweet 16 in 2021.

2024-25 SEASON RECAP

Georgia Tech returned to March Madness last season behind a 21-9 regular season record. The Yellow Jackets captured three ranked victories, the most by the program in a single season since 2021-22. Tech captured victories over Georgia (83-67), No. 21 Oregon (74-58), Mississippi State (78-75, SEC/ACC Challenge), No. 14 North Carolina (82-76) and No. 23 Nebraska (72-61). Georgia Tech spent 11 weeks ranked in the top 25, including three weeks at No. 13 in the Associated Press Top 25 poll. Tech opened the season with the best start in program history at 15-0 en route to its 12 NCAA Tournament appearance.

CAREER COUNTERS

Double-Doubles

Catherine Alben: 1

at Charleston Southern (2022-25)

vs. Georgia College Nov. 7, 2022 (22 pts, 13 reb.)

Jada Crawshaw: 5

at Long Beach State (2023-25)

at UC Irvine Jan. 30, 2025 (13 pts, 11 reb.)vs.
CSUN Jan. 23, 2025 (20 pts, 12 reb.)vs.
Cal State Fullerton Dec. 5, 2024 (13 pts, 12 reb.)vs. vs. CSU
Bakersfield Feb. 1, 2024 (15 pts, 12 reb.)
vs. USC Dec. 21, 2023 (12 pts, 10 reb.)

La'Nya Foster: 4

at Austin Peay (2023-25)

vs. West Georgia Feb. 27, 2025 (14 pts, 10 reb.)
vs. Queens (N.C.) Feb. 20, 2025 (19 pts, 11 reb.)
vs. Tennessee Southern Dec. 28, 2024 (16 pts, 11 reb.)
vs. Lipscomb Jan. 20, 2024 (11 pts, 10 reb.)

Inés Noguero: 2

at Clemson Feb. 15, 2024 (11 pts, 10 reb.)
vs. Mercer Dec. 5, 2023 (10 pts, 12 reb.)

D'Asia Thomas-Harris: 1

at Texas A&M Dec. 3, 2025 (12 pts, 10 reb.)
at Rice Nov. 16, 2023 (12 pts, 13 reb.)

Savannah Samuel: 1

vs. Florida Nov. 29, 2025 (14 pts, 10 reb.)

Brianna Turnage: 2

vs. #18 Notre Dame Jan. 1, 2026 (13 reb., 10 assists)
at Florida State (2022-25)
vs. Presbyterian Dec. 15, 2022 (14 pts, 10 reb.)

Talayah Walker: 3

at SMU Jan. 4, 2026 (30 pts, 11 reb.)
vs. #18 Notre Dame Jan. 1, 2026 (33 pts, 10 reb.)
vs. Norfolk State Dec. 8, 2025 (20 pts, 13 reb.)

20-Point Games

Catherine Alben: 19

vs. Norfolk State Dec. 8, 2025 (20)

at Charleston Southern (2022-25)

at UNC Asheville Feb. 15, 2025 (23)
vs. Presbyterian Feb. 12, 2025 (25)
vs. Gardner-Webb Feb. 8, 2025 (20)
at Winthrop Feb. 5, 2025 (26)
at Radford Jan. 18, 2025 (29)
vs. Winthrop Jan. 15, 2025 (20)
vs. Longwood Jan. 4, 2025 (23)
vs. North Dakota State Nov. 29, 2024 (21)
at Mercer Nov. 22, 2024 (22)
at Gardner-Webb Feb. 14, 2024 (26)
vs. Radford Jan. 31, 2024 (21)
vs. Gardner-Webb Jan. 10, 2024 (23)
at Presbyterian Jan. 3, 2024 (24)
at ETSU Dec. 6, 2023 (25)
at Coastal Carolina Nov. 22, 2023 (23)
vs. Furman Nov. 14, 2023 (21)
vs. Presbyterian Jan. 7, 2023 (25)
vs. Georgia College Nov. 7, 2022 (22)

Jada Crawshaw: 2

at Long Beach State (2023-25)

vs. CSUN Jan. 23, 2025 (20)
at Cal State Fullerton Jan. 18, 2025 (20)

La'Nya Foster: 5

vs. #18 Notre Dame Jan. 1, 2026 (22)
at Austin Peay (2023-25)
vs. North Alabama Jan. 23, 2025 (22)
at High Point Dec. 21, 2024 (24)
vs. Kennesaw State March 8, 2024 (24)
at Bellarmine March 2, 2024 (24)

Talayah Walker: 5

vs. Norfolk State Dec. 8, 2025 (20)
at NC State Dec. 18, 2025 (20)
vs. Wofford Dec. 28, 2025 (22)
vs. #18 Notre Dame Jan. 1, 2026 (33)
at SMU Jan. 4, 2026 (30)
vs. Virginia Jan. 8, 2026 (21)

THE LAST TIME...

Team

Tech scored 100 points in a game:	100 vs. Pittsburgh, December 29, 2024
Tech scored 100 points in an ACC game:	100 vs. Pittsburgh, December 29, 2024
A Tech opponent scored 100 points:	105 vs. Virginia Tech, Jan. 9, 2025 (2 OT)
Tech scored 60-69 points in a half:	60 vs. Morgan State, Nov. 16, 2014
Tech scored 70+ points in a half:	70 vs. Presbyterian (2nd half), Dec. 2, 1985
Tech won an overtime game:	vs. No. 18 Notre Dame, Jan. 1, 2026
Tech lost an overtime game:	vs. Virginia Tech, Jan. 9, 2025 (2 OT)
Tech played a double overtime game:	vs. Virginia Tech, Jan. 9, 2025 (2 OT)
Tech played a triple overtime game:	vs. Michigan (89-79), April 1, 2017
Tech shot 70 percent for a half:	71.0 (22-31) vs. Radford, Nov. 6, 2025
Tech shot 80 percent for a half:	82.4 (14-17) at Clemson, Jan. 30, 2022
Tech shot 60 percent from the field in a game:	61.7 (37-60) vs. Florida A&M, Dec. 1, 2024
Tech shot 90 percent from the free throw line in a game (min. 10 att.):	92.3 (12-13) vs. Norfolk State, Dec. 8, 2025
Tech shot 100 percent from the free throw line in a game (min. 10 att.):	1.000 (11-11), at Clemson, Feb. 15, 2024
Tech shot less than 40 percent from the field in a game:	27.9 (17-61) vs. Virginia, Jan. 8, 2026
Tech shot less than 30 percent from the field in a half:	29.4 (10-34) vs. Florida, Nov. 29, 2025
Tech shot less than 50 percent from the free throw line in a game:	42.9 (9-21) vs. USC Upstate, Dec. 20, 2023
Opponent shot less than 50 percent from the free throw line in a game:	43.8 (7-16) vs. West Georgia, Nov. 19, 2025
Tech did not make a 3-point field goal:	vs. Florida, Nov. 29, 2025
Tech held an opponent under 30 percent shooting:	23.4 (15-64) vs. Charleston Southern, Nov. 13, 2025
An opponent shot 60 percent:	61.4 (35-57) at Stanford, March 2, 2025
Tech attempted 50 free throws:	51 (made 34) vs. Alabama State, Nov. 24, 2015
Tech made 40 free throws:	Never
Tech defeated a top-10 opponent:	No. 3/2 vs. UConn, 57-44, Dec. 9, 2021
Tech defeated a top-25 opponent:	No. 18 Notre Dame, 95-95 (OT), Jan. 1, 2026
Tech defeated a top-25 opponent on the road:	No. 14 North Carolina, 82-76, Dec. 15, 2024

Player

A player scored 40+ points:	Niesha Butler (40) vs. Florida State, Jan. 2, 1999
A player scored 35-39 points:	Kara Dunn (39) vs. Georgia State, Dec. 10, 2023
A player scored 30-34 points:	Talayah Walker (30) at SMU, Jan. 4, 2026
Two players scored 20+/same game:	Talayah Walker (33) and La'Nya Foster (22) vs. No. 18 Notre Dame, Jan. 1, 2026
Three players scored 20+/same game:	Alex Montgomery (26), Janie Mitchell (20) and Iasia Hemingway (20) vs. Maryland, Jan. 20, 2008
Four players scored 20+/same game:	Never
A player had back-to-back 30+ point games:	Talayah Walker (33) vs. No. 18 Notre Dame and (30) at SMU, Jan. 1 & 4, 2026
A player had 20+ rebounds:	Lorela Cubaj (20) at Purdue, Dec. 1, 2021
A player had 15-19 rebounds:	Brianna Turnage (17) vs. Wofford, Dec. 28, 2025
Two players had a double-double:	Talayah Walker (33 pts, 10 reb.) and Brianna Turnage (13 reb., 10 assists) vs. No. 18 Notre Dame, Jan. 1, 2026
Two players had double-figure rebounds in the same game:	Brianna Turnage (10) and Talayah Walker (11) at SMU, Jan. 4, 2026
Three players had double-figure rebounds in the same game:	Roddreka Rogers (12), Katarina Vuckovic (12) and Zaire O'Neil (11), NC State, Feb. 12, 2015
One player had a double-double (Pts and Ast):	Tonie Morgan (11 pts, 11 asts) at Virginia, Jan. 23, 2025
One player had a double-double (Pts and Steals):	Dawnn Maye (23 pts, 10 steals) vs. Marquette, Nov. 18, 2012
One player had a double-double (without 10+ points):	Brianna Turnage vs. No. 18 Notre Dame (13 reb, 10 assists), Jan. 1, 2026
A player had a double-double in consecutive games:	Talayah Walker vs. No. 18 Notre Dame, Jan. 1, 2026 (33 pts, 10 reb.) at SMU, Jan. 4, 2026 (30 pts, 11 reb.)
A player had a triple-double (Pts, Reb, Asst):	Tonie Morgan (14 asst, 12 reb, 12 pts) vs. Clemson, Jan. 19, 2025
A player had 20 points and 20 rebounds in the same game:	Kisha Ford (21 pts, 21 reb) vs. Mercer, Nov. 25, 1996
A player had 10-14 assists in a game:	Brianna Turnage (13) vs. No. 18 Notre Dame, Jan. 1, 2026
A player had 15+ assists in a game:	Nina Bärlin (17) vs. Virginia, Jan. 10, 2002
A player had 10+ assists in three consecutive games:	Nina Bärlin (11) vs. E. Washington, Nov. 24, 2001, (14) vs. Arkansas St., Dec. 1, 2001, (11) vs. Southern, Dec. 2, 2001, (13) vs. Florida State, Dec. 5, 2001
A player topped the team in scoring, rebounds, and assists for a game:	Talayah Walker vs. Norfolk State, Dec. 8, 2025 (20 pts, 13 reb, 5 ast)
A player played every minute of a game:	Talayah Walker and Brianna Turnage vs. Virginia, Jan. 8, 2026
A player played every minute of an overtime game:	Erica Moon vs. No. 18 Notre Dame, Jan. 1, 2026
A player had five blocked shots in a game:	Lorela Cubaj (5) at Clemson, Jan. 7, 2021
A player had five blocked shots in back-to-back games:	Zaire O'Neil (5) vs. Syracuse, Feb. 8, 2015 (6) vs. NC State, Feb. 12, 2015
A player had 10+ steals in a game:	Dawnn Maye (10) vs. Marquette, Nov. 18, 2012

STARTING LINEUPS

Game		C/F	F/G	G/F	G	G
N6	RADFORD	Termis	Turnage	Moon	Noguero	Walker
N9	PRINCETON	Termis	Turnage	Moon	Noguero	Walker
N13	CHARLESTON SO.	Termis	Turnage	Moon	Noguero	Walker
N16	JACKSONVILLE	Termis	Turnage	Moon	Noguero	Walker
N19	WEST GEORGIA	Termis	Turnage	Moon	Noguero	Walker
N23	at Georgia	Termis	Turnage	Moon	Samuel	Walker
N28	vs. St. John's	Termis	Turnage	Moon	Samuel	Walker
N29	vs. Florida	Termis	Turnage	Moon	Samuel	Walker
D3	at Texas A&M	Termis	Turnage	Moon	Samuel	Walker
D8	NORFOLK STATE	Termis	Foster	Moon	Samuel	Walker
D11	at West Virginia	Termis	Turnage	Moon	Samuel	Walker
D14	at Wake Forest	Termis	Turnage	Moon	Samuel	Walker
D18	at NC State	Termis	Foster	Moon	Alben	Walker
D28	WOFFORD	Termis	Turnage	Moon	Foster	Walker
J1	NOTRE DAME	Termis	Turnage	Moon	Foster	Walker
J4	at SMU	Termis	Turnage	Moon	Foster	Walker
J8	VIRGINIA	Termis	Turnage	Moon	Foster	Walker
J11	CLEMSON					
J18	at Duke					
J22	NORTH CAROLINA					
J25	at Florida State					
J29	at Syracuse					
F1	BOSTON COLLEGE					
F5	CALIFORNIA					
F8	STANFORD					
F12	at Clemson					
F19	at Pittsburgh					
F22	at Virginia Tech					
F26	LOUISVILLE					
M1	MIAMI					

SPECIALTY STATS (GT/Opp)

Game		Paint	Off TO	2ndCh	FBreak	Bench
N6	RADFORD	40/10	18/2	18/1	14/0	41/24
N9	PRINCETON	28/34	10/27	7/10	8/7	28/6
N13	CHARLESTON SO.	46/10	24/2	13/2	13/2	56/10
N16	JACKSONVILLE	42/26	11/20	16/8	0/11	26/13
N19	WEST GEORGIA	42/36	15/18	8/16	14/6	39/3
N23	at Georgia	22/38	9/23	8/11	16/11	31/8
N28	vs. St. John's	34/24	23/7	7/7	16/8	35/16
N29	vs. Florida	34/28	12/13	20/4	6/2	12/4
D3	at Texas A&M	26/26	15/11	5/9	13/13	25/10
D8	NORFOLK STATE	40/20	20/14	5/6	14/13	34/14
D11	at West Virginia	26/42	6/32	9/21	8/12	28/6
D14	at Wake Forest	24/24	6/12	15/5	4/7	17/2
D18	at NC State	20/34	8/14	2/5	14/17	8/32
D28	WOFFORD	44/14	7/16	10/6	9/6	23/4
J1	NOTRE DAME	52/40	20/23	11/12	16/14	21/11
J4	at SMU	38/20	29/22	8/8	14/12	23/6
J8	VIRGINIA	22/30	22/6	9/14	8/2	19/8
J11	CLEMSON					
J18	at Duke					
J22	NORTH CAROLINA					
J25	at Florida State					
J29	at Syracuse					
F1	BOSTON COLLEGE					
F5	CALIFORNIA					
F8	STANFORD					
F12	at Clemson					
F19	at Pittsburgh					
F22	at Virginia Tech					
F26	LOUISVILLE					
M1	MIAMI					

POINTS-REBOUNDS-ASSISTS

Opponent	Date	Score	W/L	00 TURNAGE	01 TAYLOR	03 MOON	04 URDIAIN	05 ALBEN	12 CRAWSHAW	13 MUKEBA	20 TERMIS
RADFORD	11/6/25	82-36	W	2-11-2	--	6-1-6	--	14-2-4	9-3-0	--	8-7-3
PRINCETON	11/9/25	61-67	L	5-10-1	--	4-2-2	--	15-3-0	4-1-2	--	2-7-5
CHARLESTON SO.	11/13/25	87-40	W	3-13-6	--	2-1-1	--	17-6-3	10-8-1	--	2-1-3
JACKSONVILLE	11/16/25	64-69	L	10-9-2	--	1-5-3	--	4-3-2	6-1-0	--	6-2-4
WEST GEORGIA	11/19/25	68-60	W	5-11-5	--	0-1-3	--	6-5-4	11-8-1	--	0-2-1
at Georgia	11/23/25	59-87	L	4-0-9	--	5-1-3	--	12-0-2	10-6-0	--	3-3-0
vs. St. John's	11/28/25	75-77	L	5-4-1	--	0-2-4	--	18-6-2	--	--	6-2-0
vs. Florida	11/29/25	56-65	L	9-8-1	--	6-5-2	--	10-2-1	--	--	4-6-3
at Texas A&M	12/3/25	63-72	L	4-8-1	--	1-5-3	--	8-2-5	--	--	5-1-3
NORFOLK STATE	12/8/25	72-57	W	4-2-2	--	5-4-5	--	20-1-0	--	--	2-5-3
at West Virginia	12/11/25	50-82	L	0-1-0	--	3-3-2	--	4-7-3	6-4-2	--	2-3-1
at Wake Forest	12/14/25	56-57	L	4-10-2	--	8-5-3	--	2-4-4	3-2-0	--	2-3-0
at NC State	12/18/25	58-87	L	2-3-4	--	2-2-2	--	18-4-1	0-1-0	--	5-2-3
WOFFORD	12/28/25	79-63	W	6-17-7	--	11-8-9	--	2-2-2	14-6-1	--	2-4-4
NOTRE DAME	1/1/26	95-90 (OT)	W	3-13-10	--	12-4-6	--	18-1-2	3-2-0	--	4-3-1
at SMU	1/4/26	67-59	W	2-10-1	--	2-1-4	--	12-1-2	9-5-0	--	2-2-0
VIRGINIA	1/8/26	59-61	L	9-7-3	--	4-1-3	--	8-3-3	7-5-1	--	2-0-0
CLEMSON	1/11/26										
at Duke	1/18/26										
NORTH CAROLINA	1/22/26										
at Florida State	1/25/26										
at Syracuse	1/29/26										
BOSTON COLLEGE	2/1/26										
CALIFORNIA	2/5/26										
STANFORD	2/8/26										
at Clemson	2/12/26										
at Pittsburgh	2/19/26										
at Virginia Tech	2/22/26										
LOUISVILLE	2/26/26										
MIAMI	3/1/26										

Opponent	Date	Score	W/L	21 WALKER	22 NOGUERO	23 FOSTER	32 T-HARRIS	33 SAMUEL
RADFORD	11/6/25	82-36	W	16-7-2	9-5-3	2-0-1	10-9-1	6-2-2
PRINCETON	11/9/25	61-67	L	9-3-2	13-7-2	--	5-5-0	4-0-0
CHARLESTON SO.	11/13/25	87-40	W	19-5-3	5-0-1	10-4-3	6-10-2	13-2-1
JACKSONVILLE	11/16/25	64-69	L	15-5-1	6-10-2	0-1-0	8-7-0	8-3-0
WEST GEORGIA	11/19/25	68-60	W	9-4-2	--	11-1-3	11-7-0	15-2-2
at Georgia	11/23/25	59-87	L	4-3-1	--	6-5-0	3-4-0	12-3-1
vs. St. John's	11/28/25	75-77	L	18-4-2	--	6-5-2	11-2-0	7-1-1
vs. Florida	11/29/25	56-65	L	11-7-1	--	2-0-1	0-3-0	14-10-0
at Texas A&M	12/3/25	63-72	L	17-7-0	--	5-1-1	12-10-0	11-3-2
NORFOLK STATE	12/8/25	72-57	W	20-13-5	--	0-8-3	10-7-0	11-5-2
at West Virginia	12/11/25	50-82	L	4-3-0	--	4-4-3	14-6-0	13-1-0
at Wake Forest	12/14/25	56-57	L	13-5-1	--	5-2-0	7-6-1	12-4-2
at NC State	12/18/25	58-87	L	20-5-1	--	5-8-3	2-2-1	4-1-0
WOFFORD	12/28/25	79-63	W	22-7-3	--	15-5-3	2-0-0	5-1-0
NOTRE DAME	1/1/26	95-90 (OT)	W	33-10-6	--	22-4-2	0-0-0	--
at SMU	1/4/26	67-59	W	30-11-2	--	8-8-3	--	2-0-1
VIRGINIA	1/8/26	59-61	L	21-8-1	--	4-2-0	2-2-0	2-0-0
CLEMSON	1/11/26							
at Duke	1/18/26							
NORTH CAROLINA	1/22/26							
at Florida State	1/25/26							
at Syracuse	1/29/26							
BOSTON COLLEGE	2/1/26							
CALIFORNIA	2/5/26							
STANFORD	2/8/26							
at Clemson	2/12/26							
at Pittsburgh	2/19/26							
at Virginia Tech	2/22/26							
LOUISVILLE	2/26/26							
MIAMI	3/1/26							

REBOUNDING GAME (GT/Opp)

Date	Opponent	Dec.	Result	Total	Margin	Offensive	Defensive	High Rebounder
N6	RADFORD	W	82-36	51	+28	13	38	Turnage - 11
N9	PRINCETON	L	61-67	39	+5	8	31	Turnage - 10
N13	CHARLESTON SO.	W	87-40	52	+18	11	41	Turnage - 13
N16	JACKSONVILLE	L	64-69	52	+13	20	32	Noguero - 10
N19	WEST GEORGIA	W	68-60	42	+2	15	27	Turnage - 11
N23	at Georgia	L	59-87	37	+3	9	28	Turnage - 9
N28	vs. St. John's	L	75-77	27	-8	8	19	Alben - 6
N29	vs. Florida	L	56-65	46	+9	22	24	Samuel - 10
D3	at Texas A&M	L	63-72	40	-5	9	31	Thomas-Harris - 10
D8	NORFOLK STATE	W	72-57	49	+16	10	39	Walker - 13
D11	at West Virginia	L	50-82	39	+1	13	26	Alben - 7
D14	at Wake Forest	L	56-57	47	+15	14	33	Turnage - 10
D18	at NC State	L	58-87	31	-13	4	27	Foster - 8
D28	WOFFORD	W	79-63	55	+27	13	42	Turnage - 17
J1	NOTRE DAME	W	95-90 (OT)	42	+6	11	31	Turnage - 13
J4	at SMU	W	67-59	40	+5	12	28	Walker - 11
J8	VIRGINIA	L	59-61	35	-10	15	20	Walker - 8
J11	CLEMSON							
J18	at Duke							
J22	NORTH CAROLINA							
J25	at Florida State							
J29	at Syracuse							
F1	BOSTON COLLEGE							
F5	CALIFORNIA							
F8	STANFORD							
F12	at Clemson							
F19	at Pittsburgh							
F22	at Virginia Tech							
F26	LOUISVILLE							
M1	MIAMI							

TEAM MISC. STATS**Most First Half Points**

Georgia Tech 48 - (2x), last: vs. Wofford (Dec. 28)
Opponents 55 - RV NC State (Dec. 18)

Fewest First Half Points

Georgia Tech 19 - at West Virginia (Dec. 11)
Opponents 10 - Radford (Nov. 6)

Largest Halftime Lead

Georgia Tech 28 - vs. Charleston Southern (Nov. 13)
Opponents 24 - RV NC State (Dec. 18)

Most Second Half Points

Georgia Tech 58 - vs. Radford (Nov. 6)
Opponents 55 - RV/RV West Virginia (Dec. 11)

Fewest Second Half Points

Georgia Tech 24 - (2x), last: vs. Norfolk State (Dec. 8)
Opponents 26 - Radford (Nov. 6)

Largest Margin of Victory

Georgia Tech 47 - vs. Charleston Southern (Nov. 13)
Opponents 32 - RV/RV West Virginia (Dec. 11)

Most Turnovers

Georgia Tech 28 - vs. RV/RV West Virginia (Dec. 11)
Opponents 22 - St. John's (Nov. 28)

Fewest Turnovers

Georgia Tech 7 - vs. Charleston Southern (Nov. 13)
Opponents 6 - Wofford (Dec. 28)

Most Steals

Georgia Tech 16 - vs. St. John's (Nov. 28)
Opponents 15 (2x), last: Jacksonville (Nov. 16)

Fewest Steals

Georgia Tech 4 - at Texas A&M (Dec. 3)
Opponents 2 - St. John's (Nov. 28)

Most Blocks

Georgia Tech 9 - vs. West Georgia (Nov. 19)
Opponents 13 - Virginia (Jan. 8)

Fewest Blocks

Georgia Tech 1 (3x), last: vs. No. 18 Notre Dame (Jan. 1)
Opponents 0 - West Georgia (Nov. 19)

Most Assists

Georgia Tech 29 - vs. Wofford (Dec. 28)
Opponents 23 - (2x), last: NC State (Dec. 18)

REBOUNDING BREAKDOWN (GT/Opp)

Date	Opponent	Q1	Q2	H1	Q3	Q4	H2	OT	Game
N6	RADFORD	13/10 (+3)	12/7 (+5)	25/17 (+8)	13/1 (+12)	13/5 (+8)	26/6 (+20)		51/23 (+28)
N9	PRINCETON	12/6 (+6)	11/7 (+4)	23/13 (+10)	10/12 (-2)	6/9 (-3)	16/21 (-5)		39/34 (+5)
N13	CHARLESTON SO.	11/8 (+3)	15/13 (+2)	26/21 (+5)	14/7 (+7)	12/6 (+6)	26/13 (+13)		52/34 (+18)
N16	JACKSONVILLE	13/10 (+3)	12/9 (+3)	25/19 (+6)	13/8 (+5)	14/12 (+2)	27/20 (+7)		52/39 (+13)
N19	WEST GEORGIA	9/7 (+2)	11/8 (+3)	20/15 (+5)	13/12 (+1)	9/13 (-4)	22/25 (-3)		42/40 (+2)
N23	at Georgia	12/12 (0)	9/9 (0)	21/21 (0)	8/5 (+3)	8/8 (0)	16/13 (+3)		37/34 (+3)
N28	vs. St. John's	2/11 (-9)	9/9 (0)	11/20 (-9)	10/6 (+4)	6/9 (-3)	16/15 (+1)		27/35 (-8)
N29	vs. Florida	16/9 (+7)	10/9 (+1)	26/18 (+8)	12/10 (+2)	8/9 (-1)	20/19 (+1)		46/37 (+9)
D3	at Texas A&M	10/9 (+1)	7/9 (-2)	17/18 (-1)	11/13 (-2)	12/14 (-2)	23/27 (-4)		40/45 (-5)
D8	NORFOLK STATE	11/8 (+3)	14/7 (+7)	25/15 (+10)	12/11 (+1)	12/7 (+5)	24/18 (+6)		49/33 (+16)
D11	at West Virginia	17/7 (+10)	9/11 (-2)	26/18 (+8)	6/8 (-2)	7/12 (-5)	13/20 (-7)		39/38 (+1)
D14	at Wake Forest	11/12 (-1)	12/6 (+6)	23/18 (+5)	10/8 (+2)	14/6 (+8)	24/14 (+10)		47/32 (+15)
D18	at NC State	9/8 (+1)	5/11 (-6)	14/19 (-5)	9/17 (-8)	8/8 (0)	17/25 (-8)		31/44 (-13)
D28	WOFFORD	10/5 (+5)	19/4 (+15)	29/9 (+20)	16/12 (+4)	10/7 (+3)	26/19 (+7)		55/28 (+27)
J1	NOTRE DAME	10/7 (+3)	7/9 (-2)	17/16 (+1)	13/12 (+1)	4/4 (0)	17/16 (+1)	8/4 (+4)	42/36 (+6)
J4	at SMU	10/10 (0)	8/9 (-1)	18/19 (-1)	13/7 (+6)	9/9 (0)	22/16 (+6)		40/35 (+5)
J8	VIRGINIA	13/8 (+5)	7/14 (-7)	20/22 (-2)	5/10 (-5)	10/13 (-3)	15/23 (-8)		35/45 (-10)
J11	CLEMSON								
J18	at Duke								
J22	NORTH CAROLINA								
J25	at Florida State								
J29	at Syracuse								
F1	BOSTON COLLEGE								
F5	CALIFORNIA								
F8	STANFORD								
F12	at Clemson								
F19	at Pittsburgh								
F22	at Virginia Tech								
F26	LOUISVILLE								
M1	MIAMI								

Bold - Season-Best for Georgia Tech in respective half/quarter/game

2025-26 RESULTS

RECORD: 7-10 Overall (Home: 6-3; Away: 1-5; Neutral: 0-2; ACC: 2-3)

Date	Opponent	Dec.	Result	Margin	Rec.	High Scorer	High Rebounder	High Assists	Attendance
N6	RADFORD	W	82-36	+46	1-0	Walker (16)	Turnage (11)	Moon (6)	5,467
N9	PRINCETON	L	61-67	-6	1-1	Alben (15)	Turnage (10)	Termis (5)	1,809
N13	CHARLESTON SO.	W	87-40	+47	2-1	Walker (19)	Turnage (13)	Turnage (6)	1,439
N16	JACKSONVILLE	L	64-69	-5	2-2	Walker (15)	Noguero (10)	Termis (4)	1,577
N19	WEST GEORGIA	W	68-60	+8	3-2	Samuel (15)	Turnage (11)	Turnage (5)	1,628
N23	at Georgia	L	59-87	-28	3-3	Samuel/Alben (12)	Turnage (9)	Moon (3)	3,746
N28	vs. St. John's	L	75-77	-2	3-4	Alben/Walker (18)	Alben (6)	Moon (7)	450
N29	vs. Florida	L	56-65	-9	3-5	Samuel (14)	Samuel (10)	Termis (3)	--
D3	at Texas A&M	L	63-72	-9	3-6	Walker (17)	Thomas-Harris (10)	Alben (5)	3,626
D8	NORFOLK STATE	W	72-57	+15	4-6	Walker/Alben (20)	Walker (13)	Walker/Moon (5)	1,575
D11	at West Virginia	L	50-82	-32	4-7	Thomas-Harris (14)	Alben (7)	Alben/Foster (3)	2,935
D14	at Wake Forest	L	56-57	-1	4-8 (0-1)	Walker (13)	Turnage (10)	Alben (4)	1,220
D18	at NC State	L	58-87	-29	4-9 (0-2)	Walker (20)	Foster (8)	Turnage (4)	4,432
D28	WOFFORD	W	79-63	+16	5-9 (0-2)	Walker (22)	Turnage (17)	Moon (9)	1,937
J1	#18 NOTRE DAME	W	95-90 (OT)	+5	6-9 (1-2)	Walker (33)	Turnage (13)	Turnage (10)	3,759
J4	at SMU	W	67-59	+8	7-9 (2-2)	Walker (30)	Walker (11)	Moon (4)	1,530
J8	VIRGINIA	L	59-61	-2	7-10 (2-3)	Walker (21)	Walker (8)	Moon/Turnage/Alben (3)	1,526
J11	CLEMSON								
J18	at Duke								
J22	NORTH CAROLINA								
J25	at Florida State								
J29	at Syracuse								
F1	BOSTON COLLEGE								
F5	CALIFORNIA								
F8	STANFORD								
F12	at Clemson								
F19	at Pittsburgh								
F22	at Virginia Tech								
F26	LOUISVILLE								
M1	MIAMI								

2025-26 GEORGIA TECH STATISTICS (ALL GAMES)



2025-26 Georgia Tech Women's Basketball Combined Team Statistics All games

Page 1/1
as of Jan 09, 2026

Game Records

Record	Overall	Home	Away	Neutral
ALL GAMES	7-10	6-3	1-5	0-2
CONFERENCE	2-3	1-1	1-2	0-0
NON-CONFERENCE	5-7	5-2	0-3	0-2

Score by Periods

Team	1st	2nd	3rd	4th	OT	TOT
Georgia Tech	293	258	288	297	15	1151
Opponents	233	254	333	299	10	1129

Team Box Score

No.	Player	GP-GS	MIN	AVG	FG-FGA	FG%	3FG-3FGA	3FG%	FT-FTA	FT%	OFF	DEF	TOT	AVG	PF	DQ	A	TO	BLK	STL	PTS	AVG
21	WALKER, Talayah	17-17	501:15	29.5	94-202	.465	17-33	.515	76-95	.800	44	63	107	6.3	37	1	33	41	4	28	281	16.5
5	ALBEN, Catherine	17-1	409:23	24.1	72-184	.391	17-62	.274	27-38	.711	11	41	52	3.1	38	1	40	44	3	15	188	11.1
33	SAMUEL, Savannah	16-8	363:44	22.7	49-115	.426	11-40	.275	30-37	.811	12	26	38	2.4	30	0	14	26	2	9	139	8.7
22	NOGUERO, Ines	4-4	96:16	24.1	14-25	.560	3-5	.600	2-2	1.000	2	20	22	5.5	8	0	8	7	4	2	33	8.3
12	CRAWSHAW, Jada	13-0	205:36	15.8	37-73	.507	1-3	.333	17-32	.531	18	34	52	4.0	27	1	8	19	8	13	92	7.1
23	FOSTER, La'Nya	16-6	358:30	22.4	41-118	.347	9-39	.231	14-15	.933	17	41	58	3.6	24	0	28	26	2	12	105	6.6
32	THOMAS-HARRIS, D'Asia	16-0	251:22	15.7	33-106	.311	9-35	.257	28-39	.718	23	57	80	5.0	39	2	5	20	8	11	103	6.4
0	TURNAGE, Brianna	17-15	424:38	25.0	33-61	.541	0-1	.000	11-32	.344	39	107	146	8.6	24	0	48	40	17	27	77	4.5
3	MOON, Erica	17-17	433:03	25.5	28-79	.354	6-36	.167	14-22	.636	4	47	51	3.0	27	0	64	39	4	16	76	4.5
20	TERMIS, Ariadna	17-17	381:12	22.4	23-70	.329	5-37	.135	6-6	1.000	8	45	53	3.1	19	0	34	25	15	7	57	3.4
Team											29	36	65					10				
Total		17	3425		424-1033	.410	78-291	.268	225-318	.708	207	517	724	42.6	273	5	282	297	67	140	1151	67.7
Opponents		17	3425		413-1078	.383	114-386	.295	189-284	.665	183	429	612	36.0	249	1	264	251	77	162	1129	66.4

Team Statistics

	GATECH	OPP
Scoring	1151	1129
Points per game	67.7	66.4
Scoring margin	+1.3	-
Field goals-att	424-1033	413-1078
Field goal pct	.410	.383
3 point fg-att	78-291	114-386
3-point FG pct	.268	.295
3-pt FG made per game	4.6	6.7
Free throws-att	225-318	189-284
Free throw pct	.708	.665
F-Throws made per game	13.2	11.1
Rebounds	724	612
Rebounds per game	42.6	36.0
Rebounding margin	+6.6	-
Assists	282	264
Assists per game	16.6	15.5
Turnovers	297	251
Turnovers per game	17.5	14.8
Turnover margin	-2.7	-
Assist/turnover ratio	0.9	1.1
Steals	140	162
Steals per game	8.2	9.5
Blocks	67	77
Blocks per game	3.9	4.5
Winning streak	0	-
Home win streak	0	-
Attendance	20717	17489
Home games-Avg/Game	9-2302	6-2915
Neutral site-Avg/Game	-	2-225

Team Results

Date	Opponent		Score	Att.
11/06/2025	Radford	W	82-36	5467
11/09/2025	Princeton	L	61-67	1809
11/13/2025	Charleston So.	W	87-40	1439
11/16/2025	Jacksonville	L	64-69	1577
11/19/2025	West Ga.	W	68-60	1628
11/23/2025	at Georgia	L	59-87	3746
11/28/2025	vs St. John's (NY)	L	75-77	450
11/29/2025	vs Florida	L	56-65	0
12/03/2025	at Texas A&M	L	63-72	3626
12/08/2025	Norfolk St.	W	72-57	1575
12/11/2025	at West Virginia	L	50-82	2935
12/14/2025	at Wake Forest	L	56-57	1220
12/18/2025	at NC State	L	58-87	4432
12/28/2025	Wofford	W	79-63	1937
01/01/2026	Notre Dame	Wot	95-90	3759
01/04/2026	at SMU	W	67-59	1530
01/08/2026	Virginia	L	59-61	1526

2025-26 GEORGIA TECH STATISTICS (ACC GAMES ONLY)



2025-26 Georgia Tech Women's Basketball Combined Team Statistics In Conference games

Page 1/1
as of Jan 09, 2026

Game Records

Record	Overall	Home	Away	Neutral
ALL GAMES	2-3	1-1	1-2	0-0
CONFERENCE	2-3	1-1	1-2	0-0
NON-CONFERENCE	0-0	0-0	0-0	0-0

Score by Periods

Team	1st	2nd	3rd	4th	OT	TOT
Georgia Tech	83	69	73	95	15	335
Opponents	76	100	103	65	10	354

Team Box Score

No. Player					Total		3-Point		F-Throw		Rebounds													
		GP-GS	MIN	AVG	FG-FGA	FG%	3FG-3FGA	3FG%	FT-FTA	FT%	OFF	DEF	TOT	AVG	PF	DQ	A	TO	BLK	STL	PTS	AVG		
21	WALKER, Talayah	5-5	169:42	33.9	35-78	.449	9-18	.500	38-42	.905	16	23	39	7.8	7	0	11	11	3	11	117	23.4		
5	ALBEN, Catherine	5-1	130:17	26.1	22-59	.373	8-29	.276	6-9	.667	2	11	13	2.6	11	0	12	10	0	4	58	11.6		
23	FOSTER, La'Nya	5-4	131:54	26.4	17-47	.362	2-15	.133	8-9	.889	10	14	24	4.8	5	0	8	9	0	5	44	8.8		
3	MOON, Erica	5-5	163:11	32.6	10-34	.294	2-16	.125	6-7	.857	1	12	13	2.6	7	0	18	13	2	7	28	5.6		
33	SAMUEL, Savannah	4-1	61:08	15.3	9-23	.391	2-8	.250	0-0	.000	2	3	5	1.3	7	0	3	6	0	3	20	5.0		
12	CRAWSHAW, Jada	5-0	63:47	12.8	9-23	.391	0-0	.000	4-6	.667	6	9	15	3.0	12	1	1	5	4	3	22	4.4		
0	TURNAGE, Brianna	5-4	153:10	30.6	8-13	.615	0-0	.000	4-8	.500	6	37	43	8.6	7	0	20	13	6	10	20	4.0		
20	TERMIS, Ariadna	5-5	107:19	21.5	7-18	.389	1-10	.100	0-0	.000	0	10	10	2.0	7	0	4	8	4	1	15	3.0		
32	THOMAS-HARRIS, D'Asia	4-0	44:30	11.1	4-18	.222	0-8	.000	3-4	.750	4	6	10	2.5	9	0	2	2	1	1	11	2.8		
Team											9	14	23					3						
Total		5	1025		121-313	.387	24-104	.231	69-85	.812	56	139	195	39.0	72	1	79	80	20	45	335	67.0		
Opponents		5	1025		137-321	.427	34-96	.354	46-71	.648	54	138	192	38.4	65	0	87	79	28	48	354	70.8		

Team Statistics

	GATECH	OPP
Scoring	335	354
Points per game	67.0	70.8
Scoring margin	-3.8	-
Field goals-att	121-313	137-321
Field goal pct	.387	.427
3 point fg-att	24-104	34-96
3-point FG pct	.231	.354
3-pt FG made per game	4.8	6.8
Free throws-att	69-85	46-71
Free throw pct	.812	.648
F-Throws made per game	13.8	9.2
Rebounds	195	192
Rebounds per game	39.0	38.4
Rebounding margin	+0.6	-
Assists	79	87
Assists per game	15.8	17.4
Turnovers	80	79
Turnovers per game	16.0	15.8
Turnover margin	-0.2	-
Assist/turnover ratio	1.0	1.1
Steals	45	48
Steals per game	9.0	9.6
Blocks	20	28
Blocks per game	4.0	5.6
Winning streak	0	-
Home win streak	0	-
Attendance	5285	7182
Home games-Avg/Game	2-2643	3-2394
Neutral site-Avg/Game	-	0-0

Team Results

Date	Opponent		Score	Att.
12/14/2025	at Wake Forest	L	56-57	1220
12/18/2025	at NC State	L	58-87	4432
01/01/2026	Notre Dame	Wot	95-90	3759
01/04/2026	at SMU	W	67-59	1530
01/08/2026	Virginia	L	59-61	1526

2025-26 GAME-BY-GAME BOX SCORES



Official Basketball Box Score - Final
Raidford at Georgia Tech
11/09/25 McCarroll Pavilion, Atlanta
Georgia Tech vs. Raidford

Game Time: 10:00 AM
Game Duration: 1:54
Attendance: 5,467



Official Basketball Box Score - Final
Princeton at Georgia Tech
11/09/25 McCarroll Pavilion, Atlanta
2025-26 Women's Basketball

Game Time: 2:00 PM
Game Duration: 2:07
Attendance: 1,809

Officials: Joseph Vasezy, Saf Esho, Krystle Apellaniz

Raidford - 36		Record: 0-2													Shooting By Period														
NO. Name	Min	FG	3P	FT	Rebounds	Fouls	TP	AS	TO	ST	Blocks	BS	BA	+/-	1st FG	2nd FG	3rd FG	4th FG	GMFG	3PT%	FT%	Reb	PF	FF	TP	AS	TO	ST	
8 Cate Carlson	F 15:43	0-2	0-1	1-4	0	1	1	3	3	1	0	0	2	0	-8	3PT%	2-6	33.3%	FT%	0-2	0	0	0	0	0	0	0	0	
23 Georgia Simonsen	F 19:23	1-3	0-1	2-2	0	6	6	3	2	4	0	1	1	0	-25	3PT%	0-12	0.0%	FT%	0-0	0	0	0	0	0	0	0	0	
4 Jai Williams	G 23:26	0-6	0-3	0-0	0	1	1	0	3	0	1	4	2	0	-1	3PT%	0-5	0.0%	FT%	0-0	0	0	0	0	0	0	0	0	
32 Angelina Nice	G 24:59	1-4	1-4	1-4	1	1	2	1	2	4	2	1	0	0	-27	3PT%	0-0	0.0%	FT%	0-0	0	0	0	0	0	0	0	0	
33 Ellie Taylor	G 19:00	0-6	0-1	3-4	0	0	0	0	3	3	2	4	0	0	-24	3PT%	0-0	0.0%	FT%	0-0	0	0	0	0	0	0	0	0	
15 Cherish Haywood	18:39	2-4	1-2	0-0	1	2	3	1	1	5	0	1	0	0	-10	3rd FG	2-9	22.2%	3PT%	0-5	0.0%	FT%	0-0	0	0	0	0	0	
21 Adelyn Taylor-Walker	17:54	4-14	1-3	0-0	0	0	0	1	0	9	2	1	0	0	-18	3PT%	0-5	0.0%	FT%	0-0	0.0%	FT%	0-0	0	0	0	0	0	
4 Anaiiah Jenkins	15:44	2-6	0-3	0-0	2	1	3	4	1	4	1	0	1	0	-17	3PT%	0-5	0.0%	FT%	0-0	0.0%	FT%	0-0	0	0	0	0	0	
5 Kirah Dandridge	17:56	0-5	0-3	1-2	0	1	1	2	2	1	0	1	1	0	-35	3PT%	1-6	16.7%	FT%	4-8	50.0%	FT%	0-0	0	0	0	0	0	
24 Anna Stromberg	09:15	0-0	0-0	0-0	0	3	3	0	0	0	0	3	0	0	-15	3PT%	1-6	16.7%	FT%	4-8	50.0%	FT%	0-0	0	0	0	0	0	
14 Lindsey Williams	04:24	0-0	0-0	0-0	0	0	0	1	0	0	0	0	0	0	-7	GMFG%	12-54	22.2%	3PT%	3-22	13.6%	FT%	9-18	50.0%	FT%	0-0	0	0	
11 Ava Sawi	08:21	2-4	0-1	0-0	0	0	0	1	0	4	0	0	0	0	-14														
22 Amanda Mitchell	02:46	0-0	0-0	0-0	0	0	0	1	0	0	0	0	0	0	-1														
2 Anna Chacha	02:30	0-0	0-0	1-2	1	0	1	0	1	1	0	0	0	0	-3														
Team					2	0	2	0	0	0	0	0	0	0															
Totals		12-54	3-22	9-18	7	16	23	18	18	36	10	16	7	1	3	46													

Major Fouls: NONE

Georgia Tech - 82		Record: 1-0													Major Fouls: NONE												
NO.	Name	Min	FG M-A	3P M-A	FT M-A	Rebounds OR DR TOT	Fouls PF FD	TP	AS	TO	ST	Blocks BS BA	+/-	Shooting By Period													
20	Ariadna Termis	C 21:04	3-6	0-2	2-2	2	5	7	1	1	8	3	1	0	0	24	1st FG%	4-14	28.6%								
0	Brianna Turnage	G 27:09	1-3	0-0	0-0	2	9	11	0	0	2	2	1	2	1	0	24	3PT%	1-2	50.0%							
3	Erica Moon	G 24:41	2-4	1-2	1-2	0	1	1	2	1	6	6	2	1	1	0	26	2nd FG%	2-11	18.2%							
21	Talayah Walker	G 19:49	5-9	0-1	6-9	3	4	7	3	5	16	2	3	1	0	0	24	3PT%	0-7	0.0%							
22	Ines Noguero	G 22:44	3-5	1-1	2-2	0	5	5	1	1	9	3	0	0	0	25	FT%	7-8	87.5%								
32	D'Asia Thomas-Harris	20:45	1-6	0-1	8-10	1	8	9	3	5	10	1	2	0	1	0	20	3rd FG%	12-18	66.7%							
33	Savannah Samuel	19:49	2-6	0-4	2-2	1	1	2	2	1	6	2	1	1	0	0	24	3PT%	1-4	25.0%							
23	La'Nya Foster	14:40	1-4	0-2	0-0	0	0	0	0	3	2	1	1	0	0	19	4th FG%	1-2	50%								
5	Catherine Alben	18:17	6-9	1-3	1-2	0	2	2	1	1	14	4	2	2	0	1	20	1st FG%	10-13	76.9%							
12	Jada Crawshaw	11:02	4-4	0-0	1-2	1	2	3	2	1	9	0	1	0	0	14	3PT%	1-3	33.3%								
Team						3	1	4	0	0	0	0	0	0	0		FT%			11-15	73.3%						
Totals			28-56	3-16	23-31	13	38	51	18	18	82	24	14	7	3	1	46	GMFG%			28-56	50.0%					
																	3PT%			3-16	18.8%						
																	FT%			23-31	74.2%						
																				11-15	73.3%						
																				28-56	50.0%						
																				11-15	73.3%						
																				28-56	50.0%						
																				11-15	73.3%						
																				28-56	50.0%						
																				11-15	73.3%						
																				28-56	50.0%						
																				11-15	73.3%						
																				28-56	50.0%						
																				11-15	73.3%						
																				28-56	50.0%						
																				11-15	73.3%						
																				28-56	50.0%						
																				11-15	73.3%						
																				28-56	50.0%						
																				11-15	73.3%						
																				28-56	50.0%						
																				11-15	73.3%						
																				28-56	50.0%						
																				11-15	73.3%						
																				28-56	50.0%						
																				11-15	73.3%						
																				28-56	50.0%						
																				11-15	73.3%						
																				28-56	50.0%						
																				11-15	73.3%						
																				28-56	50.0%						
																				11-15	73.3%						
																				28-56	50.0%						
																				11-15	73.3%						
																				28-56	50.0%						
																				11-15	73.3%						
																				28-56	50.0%						
																				11-15	73.3%						
																				28-56	50.0%						
																				11-15	73.3%						
																				28-56	50.0%						
																				11-15	73.3%						
																				28-56	50.0%						
																				11-15	73.3%						
																				28-56	50.0%						
																				11-15	73.3%						
																				28-56	50.0%						
																				11-15	73.3%						
																				28-56	50.0%						
																				11-15	73.3%						
																				28-56	50.0%						
																				11-15	73.3%						
																				28-56	50.0%						
																				11-15	73.3%						
																				28-56	50.0%						
																				11-15	73.3%						
																				28-56	50.0%						
																				11-15	73.3%						
																				28-56	50.0%						
																				11-15	73.3%						
																				28-56	50.0%						
																				11-15	73.3%						
																				28-56	50.0%						
																				11-15	73.3%						
																				28-56	50.0%						
																				11-15	73.3%						
																				28-56	50.0%						
																				11-15	73.3%						
																				28-56	50.0%						
																				11-15	73.3%						
																				28-56	50.0%						
																				11-15	73.3%						
																				28-56	50.0%						
																				11-15	73.3%						
																				28-56	50.0%						
																				11-15	73.3%						
																				28-56	50.0%						
																				11-15	73.3%						
																				28-56	50.0%						
																				11-15	73.3%						
																				28-56	50.0%						
																				11-15	73.3%						
																				28-56	50.0%						
																				11-15	73.3%						
																				28-56	50.0%						
																				11-15	73.3%						
																				28-56	50.0%						
																				11-15	73.3%						
																				28-56	50.0%						
																				11-15	73.3%						
																				28-56	50.0%						
																				11-15	73.3%						
																				28-56	50.0%						
																				11-15	73.3%						
																				28-56	50.0%						
																				11-15	73.3%						
																				28-56	50.0%						
																				11-15	73.3%						
																				28-56	50.0%						
																				11-15	73.3%						
																				28-56	50.0%						
																				11-15	73.3%						
																				28-56	50.0%						
																				11-15	73.3%						
																				28-56	50.0%						
																				11-15	73.3%						
																				28-56	50.0%						
																				11-15	73.3%						
												</															

Major Fouls: NONE

	RAD		GT		Points from			RAD		GT		Period by Period Scoring					
Biggest lead	0 (1 st 10:00)		47 (4 th 2:12)		Turnovers	2	18					1st	2nd	3rd	4th	TOT	
Best Scoring Run	5 (1 st 2:20)		15 (3 rd 9:12)		Paint	10	40					RAD	10	0	9	17	36
Lead Changes	0				Second Chance	1	18										
Times Tied	1				Fast Breaks	0	14										
Time with Lead	00:00		38:52		Bench	24	41					GT	13	11	26	32	82

Princeton - 67		Record: 1-0													Shooting By Period													
NO.	Name	Min	FG M-A	3P M-A	FT M-A	Rebounds OR DR TOT	Fouls FF FO	TP	AS	TO	ST	Blocks BS BA	+/-	1st FG%	2nd FG%	3rd FG%	4th FG%	GMFG%	3PT%	FT%	Reb	PF	FF	TP	AS	TO	ST	
2	Olivia Hutcherson	G 29:48	7-12	0-1	1-1	5	1	6	4	2	15	2	2	4	0	1	9	3PT%	0-7	0.0%	FT%	0-0	0	0	0	0	1	9
5	Fadima Tall	G 34:17	5-14	2-7	4-6	5	9	14	1	5	16	2	1	2	0	2	10	2nd FG%	7-21	0.0%	FT%	0-0	0	0	0	1	2	10
10	Skye Belker	G 29:01	2-9	0-2	1-2	1	1	2	2	2	5	2	3	0	0	1	2	3rd FG%	2-9	22.2%	FT%	4-4	100%					10
13	Ashley Chea	G 39:22	4-11	2-7	2-3	0	1	1	2	4	12	3	3	5	0	0	8	3rd FG%	2-9	22.2%	FT%	4-4	100%					10
23	Madison St. Rose	G 31:08	5-13	1-4	2-2	2	3	5	2	2	13	4	2	2	0	0	5	3rd FG%	6-19	31.6%	FT%	2-2	100%					10
1	Emily Eadie	08:59	1-3	0-1	1-1	2	1	3	1	2	3	0	0	0	0	0	-8	3rd FG%	6-19	31.6%	FT%	2-2	100%					10
21	Toby Nweke	10:39	0-2	0-2	0-0	0	1	1	1	0	0	0	0	0	0	0	-3	3rd FG%	6-19	31.6%	FT%	2-2	100%					10
11	Taylor Charles	09:05	0-2	0-2	0-0	0	2	2	1	0	0	0	1	2	1	0	-3	3rd FG%	6-19	31.6%	FT%	2-2	100%					10
4	Grace O'Sullivan	07:41	1-2	1-1	0-0	0	0	0	0	0	3	0	0	0	0	0	10	3rd FG%	6-19	31.6%	FT%	2-2	100%					10
Team						0	0	0	0	0	0	0	0	0	0	0												
Totals			25-68	6-27	11-15	15	15	34	14	17	67	13	13	15	1	4	6											
Major Fouls: NONE																												
Dear Ball Rebounds: 1																												

Major Fouls: NONE

Dead Ball Rebounds: 1, 1

Georgia Tech - 61		Record: 1-1													Shooting By Period							
NO. Name	Min	FG M-A	3P M-A	FT M-A	Rebounds OR DR TOT	Fouls PF FF	TP	AS	TO	ST	Blocks BS BA	+/-	1 st FG%	2 nd FG%	3 rd FG%	4 th FG%	GMFG%	3PT%	FT%			
20 Ariadna Termis	C 28:50	1-4	0-2	0-0	1	6	7	1	0	2	5	3	0	2	0	4	1 st FG%	1-3	33.3%	3PT%	2-2	100%
0 Brianna Turnage	G 29:09	2-4	0-0	1-5	2	8	10	3	4	5	1	2	2	0	0	-9	2 nd FG%	7-11	63.6%	3PT%	1-3	33.3%
3 Erica Moon	G 14:27	1-4	0-1	2-2	0	2	2	0	1	4	2	1	1	0	0	-1	3PT%	1-3	33.3%	FT%	2-3	66.7%
21 Talayah Walker	G 26:38	3-6	0-1	3-4	1	2	3	4	2	9	2	5	0	0	0	-1	3 rd FG%	0-10	0.0%	4 th FG%	1-2	50.0%
22 Ines Noguero	G 31:19	6-9	1-1	0-0	1	6	7	2	1	13	2	5	1	1	0	-4	3 rd FG%	4-10	40.0%	FT%	1-1	0%
33 Savannah Samuel	23:10	1-4	0-2	0-0	0	2	1	4	0	4	0	0	0	0	0	-10	GMFG%	22-46	47.8%	3PT%	3-9	33.3%
12 Jada Crawshaw	10:51	2-2	0-0	0-0	0	1	1	0	1	4	2	0	0	1	0	5						
5 Catherine Aben	26:29	5-9	2-3	3-4	1	2	3	4	2	15	0	3	1	0	0	-8						
32 D'Asia Thomas-Harris	09:07	1-4	0-0	3-3	2	3	5	1	2	5	0	3	1	0	1	-6						
Team					0	1	0	0	0	0												
Totals		22-46	3-9	14-20	8	31	39	17	14	61	14	26	6	4	1	-6						
Major Fouls: Teams (F) 1 2 nd 3 rd																						

2025-26 GAME-BY-GAME BOX SCORES



Official Basketball Box Score - Final
West Ga. at Georgia Tech
11/19/25 McCarth Pavilion, Atlanta
2025-26 Women's Basketball

Game Time: 7:00 PM
Game Duration: 1:49
Attendance: 1,028



Official Basketball Box Score - Final
Georgia Tech at Georgia
11/23/25 Stageman Coliseum, Athens
2025-26 Women's Basketball

Game Time: 2:00 PM
Game Duration: 1:57
Attendance: 3,746

Officials: John Copolino, Ashley Birch, Jessica Walter

Officials: Katie Lukanich, Jeffrey Smith, Jeff Wooten

West Ga. - 60		Record: 2-2												
NO. Name	Min	FG M-A	3P M-A	FT M-A	Rebounds OR DR TOT	Fouls PF FF	TP	AS	TO	ST	Blocks BS BA	+/-		
12 Destiny Jones	F 18:57	6-11	0-0	0-4	4 2 6	5 4	12	1	1	2	0 2	-7		
32 Jasmine Jones	F 34:08	2-10	1-8	0-0	2 5 7	3 0	5	1	3	1	0 1	2		
1 Sydney Tolbert	G 37:29	4-11	0-3	0-2	1 4 5	1 2	8	5	3	0	0 2	-9		
3 Asia Donald	G 28:32	5-14	3-6	3-4	2 3 5	3 2	16	0	4	1	0 1	0		
5 Grace O'Gara	G 38:15	6-13	0-3	4-6	1 4 5	1 4	16	8	4	3	0 1	-10		
11 Gaila Font	17:48	0-1	0-1	0-0	0 0 0	0 0	0	0	2	1	0 0	-8		
4 Tayah Morgan	13:34	1-4	0-0	0 0	0 0 0	0 0	3	1	0	0	0 1	-8		
2 Anya McKenzie	09:09	0-1	0-0	0 0	1 1 2	2 0	3	0	0	0	0 1	-3		
10 Callie Thrower	02:10	0-0	0-0	0 0	0 0 0	0 0	0	0	0	0	0 0	3		
Team					5 1 6	0 0	0	0	0	0	0 0			
Totals		24-65	5-25	7-16	16 24 40	15 12	60	16	17	8	0 9	-8		

Major Fouls: Jones (TF) 4th 4:09

Shooting By Period		
1 st FG%	5-16	31.3%
3PT%	2-8	25.0%
FT%	0-4	0%
2 nd FG%	5-17	29.4%
3PT%	0-8	0.0%
FT%	0-0	0%
3 rd FG%	9-14	64.3%
3PT%	2-2	100.0%
FT%	3-4	75%
4 th FG%	5-18	27.8%
3PT%	1-7	14.3%
FT%	4-8	50%
GMFG%	24-65	36.9%
3PT%	5-25	20.0%
FT%	7-16	43.8%

Dead Ball Rebounds: 7, 0

Georgia Tech - 68		Record: 3-2												
NO.	Name	Min	FG M-A	3P M-A	FT M-A	Rebounds OR DR TOT	Fouls PF FF	TP	AS	TO	ST	Blocks BS BA	+/-	
20	Ariadna Termis	C 07:18	0-3	0-0	0-0	1 1 2	1 0	1	0	1	0	0	0 2	
0	Brianna Turnage	G 27:59	2-4	0-0	1-2	3 8 11	3 2	5	5	4	1	4 0	1	
3	Erica Moon	G 23:16	0-4	0-2	0-0	1 1 1	0 0	3	0	0	0	0 0	6	
21	Talayah Walker	G 33:56	3-7	1-1	2-4	1 3 4	1 3	9	2	2	3	0 0	6	
33	Savannah Samuel	G 28:55	6-9	3-4	0-0	1 1 2	3 1	15	2	2	1	0 0	4	
32	D'Asia Thomas-Harris	24:42	4-15	0-0	3-4	3 4 7	0 3	11	0	1	3	2 0	8	
5	Catherine Alben	16:57	3-7	0-1	0-0	1 4 5	2 0	6	4	3	1	1 0	12	
12	Jada Crawshaw	20:01	5-7	0-0	1-4	4 4 8	2 4	11	1	2	1	2 0	5	
23	La'Nya Foster	16:56	4-6	1-2	2-2	0 1 1	0 1	11	3	4	2	0 0	4	
Team						1 0 1	0 0	0	0	1				
Totals			27-62	5-10	9-16	15 27 42	13 14	68	21	19	12	9 0	4	

Major Fouls: Turnage (TF) 4th 4:09

Dead Ball Rebounds: 3, 0

Biggest lead		UWG	GT
0 (1 st 10:00)		22 (2 nd 0:01)	
Best Scoring Run		9 (3 rd 7:11)	9 (1 st 6:28)
Lead Changes		0	
Times Tied		0	
Time with Lead		00:00	39:47

Points from		UWG	GT
Turnovers		18	15
Paint		36	42
Second Chance		16	8
Fast Breaks		6	14
Bench		3	39

Period by Period Scoring					
	1st	2nd	3rd	4th	TOT
UWG	12	10	23	15	60
GT	25	19	13	11	68

Georgia - 87		Record: 1-0												
NO. Name	Min	FG M-A	3P M-A	FT M-A	Rebounds OR DR TOT	Fouls PF FF	TP	AS	TO	ST	Blocks BS BA	+/-		
33 Mia Woolfolk	F 20:38	5-9	0-0	6-8	4 2 6	3 6	16	1	5	3	1 2	31		
22 Vera Ojensawa	C 12:11	2-3	0-0	0-0	1 2 3	3 0	4	0	0	0	0 0	7		
0 Trinity Turner	G 35:03	8-18	2-4	0-0	0 4 4	3 1	18	5	5	1	0 0	31		
3 Dani Carnegie	G 33:26	8-14	4-4	3-3	1 3 4	2 6	23	2	0	1	0 0	30		
14 Rylie Theuerkauf	G 30:18	6-11	3-4	3-4	4 0 4	3 4	18	0	0	1	0 1	17		
8 Zhen Craft	18:57	2-6	0-0	0-0	2 2 4	1 0	4	0	1	1	2 0	5		
2 Savannah Henderson	16:12	0-4	0-0	0-0	2 2 3	0 0	2	0	2	0	0 0	5		
11 Enjulina Gonzalez	15:58	0-2	0-1	0-0	0 2 2	3 0	0	1	0	1	0 0	6		
4 Myah Verse	09:29	1-1	0-0	0-2	0 1 1	1 1	2	1	1	1	1 0	14		
1 Jocelyn Faison	03:54	0-1	0-0	0-0	1 0 1	0 0	0	1	0	0	0 0	-3		
21 Aicha Ndour	03:54	1-2	0-0	0-0	0 1 1	1 0	2	0	0	0	0 0	-3		
Team					0 2 2	0 0	0	0	0	0	0 0			
Totals		33-71	9-17	12-17	13 21 34	23 18	87	13	12	11	4 3	28		

Major Fouls: NONE

Shooting By Period		
1 st FG%	5-20	25.0%
3PT%	0-4	0.0%
FT%	1-2	50%
2 nd FG%	10-21	47.6%
3PT%	3-7	42.9%
FT%	0-0	0%
3 rd FG%	10-15	66.7%
3PT%	5-5	100.0%
FT%	7-8	87.5%
4 th FG%	8-15	53.3%
3PT%	1-1	100.0%
FT%	4-7	57.1%
GMFG%	33-71	46.5%
3PT%	9-17	52.9%
FT%	12-17	70.6%

Dead Ball Rebounds: 2, 0

Biggest lead		GAT	UGA
6 (1 st 4:58)		31 (4 th 4:14)	
Best Scoring Run		7 (3 rd 7:35)	13 (2 nd 1:13)
Lead Changes		3	
Times Tied		2	
Time with Lead		10:41	25:38

Points from		GAT	UGA
Turnovers		9	23
Paint		22	38
Second Chance		8	11
Fast Breaks		16	11
Bench		31	8

Period by Period Scoring					
	1st	2nd	3rd	4th	TOT
GAT	16	4	23	16	59
UGA	11	23	32	21	87



Official Basketball Box Score - Final
St. John's (NY) at Georgia Tech
11/28/25 John Gray Gymnasium, Georgia Town
2



2025-26 GAME-BY-GAME BOX SCORES



Official Basketball Box Score - Final
Georgia Tech at Texas A&M
12/03/25 Reed Arena, Bryan-College Station
2025-26 Women's Basketball

Game Time: 6:00 PM
Game Duration: 2:09
Attendance: 3,626



Official Basketball Box Score - Final
Norfolk St. at Georgia Tech
12/08/25 McCamish Pavilion, Atlanta
2025-26 Women's Basketball

Game Time: 7:00 PM
Game Duration: 1:36
Attendance: 1,575

Officials: Kevin Pethel, Toni Padlo, Gina Cross

Officials: Brenda Perigo, Fatou Cassio-Stephens, Kristen Ball

Georgia Tech - 63

Record: 0-1

NO. Name	Min	FG		3P		FT		Rebounds			Fouls		TP	AS	TO	ST	Blocks		BS BA +/-
		M	A	M	A	M	A	OR	DR	TOT	PF	FO							
20 Ariadna Termis	C 17:57	2-6	1-4	0-0	0	1	1	0	1	1	0	1	5	3	1	1	0	0	0
0 Brianna Turnage	G 28:17	2-4	0-1	0-0	2	6	8	1	2	4	1	3	0	1	3	0	2	1	-6
3 Erica Moon	G 23:13	0-2	0-1	1-2	0	5	5	4	4	1	3	1	0	0	0	0	0	0	0
21 Talayah Walker	G 29:24	7-17	1-1	2-3	2	5	7	4	2	17	0	2	1	0	1	1	4	-4	
33 Savannah Samuel	G 31:33	4-9	0-3	3-3	1	2	3	1	2	11	2	1	1	0	2	0	0	-20	
5 Catherine Alben	22:18	3-8	0-3	2-3	0	2	2	3	3	8	5	5	0	0	0	0	0	-5	
32 D'Asia Thomas-Harris	27:29	4-9	3-6	1-4	3	7	10	5	4	12	0	2	1	2	1	0	1	-7	
23 La'Nya Foster	19:50	2-6	1-3	0-0	0	1	1	3	0	5	1	3	1	0	1	1	0	-3	
Team					1	2	3	0	0	0	0	1							
Totals		24-61	6-22	9-15	9	31	40	21	18	63	15	19	4	6	8	-9			

Major Fouls: NONE

Shooting By Period	
1 st FG%	7-13 53.8%
3PT%	2-6 33.3%
FT%	0-0 0%
2 nd FG%	4-12 33.3%
3PT%	2-5 40.0%
FT%	5-5 100%
3 rd FG%	6-20 30.0%
3PT%	2-7 28.6%
FT%	1-4 25%
4 th FG%	7-16 43.8%
3PT%	0-4 0.0%
FT%	3-6 50%
GM FG%	24-61 39.3%
3PT%	6-22 27.3%
FT%	9-15 60.0%

Dead Ball Rebounds: 3, 1

Norfolk St - 57

Record: 4-7

NO. Name	Min	FG M-A	3P M-A	FT M-A	Rebounds OR DR TOT	Fouls PF FO	TP	AS	TO	ST	Blocks BS BA	+/-
24 LeAire Nicks	C 23:33	4-9	0-0	2-3	2 4 6	1 5 10	2	1	2	0	0	-10
1 Da'Brya Clark	G 33:05	2-13	1-8	0-0	0 3 3	3 1 5	4	3	1	1	1	-14
3 Jascha Clinton	G 40:00	8-14	0-2	2-2	0 3 3	1 1 18	5	3	3	0	0	-15
4 Anjane Richardson	G 29:47	2-10	1-3	1-2	1 5 6	2 1 6	0	3	1	0	1	-13
7 Cire Worley	G 35:45	2-8	0-4	0-0	0 3 3	1 1 4	3	1	0	0	0	-13
14 Jenesia Hill	18:15	2-5	1-3	2-2	1 2 3	1 1 7	0	1	3	0	0	-5
25 Clara Bailey	16:27	3-5	0-0	1-2	2 2 4	1 1 7	0	0	1	3	0	-5
20 Niyah Gaston	03:08	0-2	0-2	0-0	0 1 1	0 0 0	0	0	1	0	0	0
Team					0 4 4	0 0	0	0				
Totals		23-66	3-22	8-11	6 27 33	10 11 57	14	12	12	4 2	15	

Major Fouls: NONE

Shooting By Period	
1 st FG%	7-15 46.7%
3PT%	1-5 20.0%
FT%	1-2 50%
2 nd FG%	4-16 25.0%
3PT%	1-6 16.7%
FT%	3-5 60%
3 rd FG%	5-17 29.4%
3PT%	1-6 16.7%
FT%	2-2 100%
4 th FG%	7-18 38.9%
3PT%	0-5 0.0%
FT%	2-2 100%
GM FG%	23-66 34.8%
3PT%	3-22 13.6%
FT%	8-11 72.7%

Dead Ball Rebounds: 0, 1

Texas A&M - 72

Record: 1-0

NO. Name	Min	FG M-A	3P M-A	FT M-A	Rebounds OR DR TOT	Fouls PF FO	TP	AS	TO	ST	Blocks BS BA	+/-
32 Lauren Ware	F 31:43	6-12	0-0	2-4	7 6 13	1 2 14	3	1	2	2	1	12
44 Fatmata Jannah	F 24:51	2-6	1-3	6-6	1 9 10	4 4 11	1	3	2	1	0	14
1 Ny'Ceara Pryor	G 36:52	5-16	0-1	7-11	1 3 4	3 8 17	10	1	3	2	2	12
10 Lemyah Hyllton	G 25:04	4-8	2-3	0-0	0 2 2	1 0 10	1	3	1	0	0	2
20 Janae Kent	G 32:40	3-10	1-5	3-6	2 4 6	1 3 10	1	0	0	2	2	13
24 Emerald Parker	03:10	0-0	0-0	0-0	1 1 1	1 0 0	0	0	1	1	0	-3
25 Salese Blow	17:19	1-7	1-3	4-6	0 0 0	1 4 7	0	0	0	0	0	1
6 Jordan Webster	21:03	1-5	1-4	0-0	2 0 2	2 0 3	0	0	2	1	0	-4
5 Vanessa Saidu	04:10	0-0	0-0	0-0	0 0 0	2 0 0	0	0	0	0	0	1
4 Chaney Spencer	03:08	0-1	0-0	0-0	0 0 0	2 0 0	0	0	1	0	0	-3
Team					2 5 7	0 0	0	1				
Totals		22-65	6-20	22-33	15 30 45	18 21 72	16	11	11	8 6	9	

Major Fouls: NONE

Shooting By Period	
1 st FG%	6-19 31.6%
3PT%	2-7 28.6%
FT%	0-0 0%
2 nd FG%	6-16 37.5%
3PT%	1-4 25.0%
FT%	3-4 75%
3 rd FG%	7-14 50.0%
3PT%	2-5 40.0%
FT%	8-11 72.7%
4 th FG%	3-16 18.8%
3PT%	1-4 25.0%
FT%	11-18 61.1%
GM FG%	22-65 33.8%
3PT%	6-20 30.0%
FT%	22-33 66.7%

Dead Ball Rebounds: 7, 1

Georgia Tech - 72

Record: 4-6

No.	Name	Min	FG M-A	3P M-A	FT M-A	Rebounds OR DR TOT	Fouls PF FO	TP	AS	TO	ST	Blocks BS BA	+/-
20	Ariadna Termis	C 20:41	0-4	0-2	2-2	1 4 5	0 2 2	3	1	0	1	0	4
3	Erica Moon	G 18:53	2-4	1-3	0-0	0 4 4	1 0 5	5	6	1	0	0	4
21	Talayah Walker	G 40:00	8-12	1-2	3-3	4 9 13	0 2 20	5	2	3	0	0	15
23	La'Nya Foster	G 34:58	0-5	0-2	0-0	1 7 8	1 0 0	3	1	1	0	0	15
33	Savannah Samuel	G 30:46	4-13	1-4	2-2	1 4 5	2 1 11	2	0	0	0	1	12
5	Catherine Alben	27:21	8-15	2-3	0-1	1 2 2	20 0 4	3	0	2	3	0	14
32	D'Asia Thomas-Harris	16:39	3-8	1-3	3-3	1 6 7	3 10 2	0	2	0	0	1	2
0	Brianna Turnage	10:42	2-2	0-0	0-0	1 1 2	2 1 4	2	1	2	0	0	12
Team						1 3 4	0 0	0	0				
Totals				27-65	6-23	12-13	10 39 49	11 10 72	20	17	10	2 4	15

Major Fouls: NONE

Shooting By Period	
1 st FG%	9-19 47.4%
3PT%	2-7 28.6%
FT%	0-0 0%
2 nd FG%	10-17 58.8%
3PT%	2-3 66.7%
FT%	6-7 85.7%
3 rd FG%	5-17 29.4%
3PT%	2-11 18.2%
FT%	2-2 100%
4 th FG%	3-12 25.0%
3PT%	0-2 0.0%
FT%	4-4 100%
GM FG%	27-65 41.5%
3PT%	6-23 26.1%
FT%	12-13 92.3%

Dead Ball Rebounds: 7, 1

	GT	TAMU
Biggest lead	6 (2 nd 3:36)	11 (3 rd 0:49)
Best Scoring Run	6 (1 st 0:10)	9 (3 rd 3:37)
Lead Changes	3	
Times Tied	4	
Time with Lead	12:26	23:21

Points from	GT	TAMU
Turnovers	15	11
Paint	26	26
Second Chance	5	9
Fast Breaks	13	13
Bench	25	10

Period by Period Scoring					
	1st	2nd	3rd	4th	TOT
GT	16	15	15	17	63
TAMU	14	16	24	18	72

	NSU	GT
Biggest lead	3 (1 st 1:16)	23 (3 rd 9:08)
Best Scoring Run	6 (4 th 8:12)	9 (2 nd 8:42)
Lead Changes	2	
Times Tied	3	
Time with Lead	01:42	36:33

Points from	NSU	GT
Turnovers	14	20
Paint	20	40
Second Chance	6	5
Fast Breaks	13	14
Bench	14	34

Period by Period Scoring					
	1st	2nd	3rd	4th	TOT
NSU	16	12	13	16	57
GT	20	28	14	10	72



Official Basketball Box Score - Final
Georgia Tech at West Virginia
12/11/25 Hope Coliseum, Morgantown, W. Va.
2025-26 Women's Basketball

Game Time: 7:00 PM
Game Duration: 1:58
Attendance: 2,935



Official Basketball Box Score - Final
Georgia Tech at Wake Forest
12/14/25 LVMV Coliseum, Winston-Salem
2025-26 Women's Basketball

Game Time: 2:00 PM
Game Duration: 1:47
Attendance: 1,220

Officials: Melissa Barlow, Mark Resch, Bruce Morris

Officials: Angelica Suffren, Ed Sidasky, John Capolino

Georgia Tech - 50

Record: 4-7

NO. Name	Min	FG M-A	3P M-A	FT M-A	Rebounds OR DR TOT	Fouls PF FO	TP	AS	TO	ST	Blocks BS BA	+/-
20 Ariadna Termis	C 31:43	1-1	0-0	0-0	1 2 3	1 1 2	1	1	0	0	0	-23
0 Brianna Turnage	G 09:21	0-0	0-0	0-0	0 1 1	1 1 0	0	1	1	0	0	-7
3 Erica Moon	G 19:26	1-3	0-1	1-1	0 3 3	4 2 3	2	3	2	0	0	-30
21 Talayah Walker	G 19:06	0-4	0-0	4-4	3 0 3	1 2 4	0	6	0	0	1	-16
33 Savannah Samuel	G 27:45	5-11	1-4	2-2	0 1 1	3 1 13	0	3	0	0	0	-26
5 Catherine Alben	31:07	2-14	0-3	0-0	2 5 7	3 0 4	3	5	2	0	4	-20
32 D'Asia Thomas-Harris	15:40	5-9	2-4	2-5	2 4 6	5 14 0	2	0	0	1	1	-3
23 La'Nya Foster	25:02	1-3	0-0	2-2	1 3 4	2 2 4	3	3	1	1	0	-15
12 Jada Crawshaw	20:52	2-5	0-0	2-4	3 1 4	1 3 6	2	3	1	0	0	-20
Team					1 6 7	0 0	0	1				
Totals		17-50	3-12	13-18	13 26 39	21 17 50	11	28	7	1 7	-32	

Major Fouls: Thomas-Harris (TF) 4th 5:26

Shooting By Period	
1 st FG%	2-9 22.2%
3PT%	0-2 0.0%
FT%	2-4 50%
2 nd FG%	5-13 38.5%
3PT%	1-4 25.0%
FT%	2-4 50%
3 rd FG%	8-13 61.5%
3PT%	2-3 66.7%
FT%	4-5 80%
4 th FG%	2-15 13.3%
3PT%	0-3 0.0%
FT%	5-5 100%
GM FG%	17-50 34.0%
3PT%	3-12 25.0%
FT%	13-18 72.2%

Dead Ball Rebounds: 3, 0

Georgia Tech - 56

Record: 4-8 (0-1)

NO. Name	Min	FG	3P	FT	Rebounds		Fouls	TP	AS	TO	ST	Blocks	BS	+/-	
		M	A	M	A	OR	DR	TOT	PF	FO			BA		
20 Ariadna Termis	C 23:51	1-4	0-2	0-0		0	3	3	0	1	2	0	0	1	0
0 Brianna Turnage	G 26:01	1-3	0-0	2-4		2	8	10	2	2	4	2	2	1	2
3 Erica Moon	G 28:44	3-8	2-6	0-0		1	4	5	2	1	8	3	5	2	1
21 Talayah Walker	G 27:01	6-13	1-2	0-0		3	2	5	0	0	13	1	1	0	0
33 Savannah Samuel	G 26:40	5-11	2-5	0-0		2	2	4	1	1	12	2	3	1	0
5 Catherine Alben	21:16	1-10	0-6	0-0		1	3	4	3	0	2	4	1	0	0
12 Jada Crawshaw	13:59	1-5	0-0	1-2		0	2	2	2	3	3	0	0	0	1
32 D'Asia Thomas-Harris	16:09	2-5	0-1	3-4		2	4	6	3	4	7	1	1	0	1
23 La'Nya Foster	16:19	1-4	1-3	2-2		0	2	2	0	1	5	0	2	2	0
Team						3	3	6	0	0	0	1			
Totals		21-63	6-25	8-12		14	33	47	13	13	56	17	17	5	3

2025-26 GAME-BY-GAME BOX SCORES



Official Basketball Box Score - Final
Georgia Tech at NC State
12/18/25 Reynolds Coliseum, Raleigh
2025-26 Women's Basketball

Game Time: 7:00 PM
Game Duration: 1:38
Attendance: 4,432



Official Basketball Box Score - Final
Wofford at Georgia Tech
12/28/25 McCamish Pavilion, Atlanta
2025-26 Women's Basketball

Game Time: 12:00 PM
Game Duration: 1:45
Attendance: 1,357

Officials: Karen Piroto, Katie Lukanich, Sall Esho

Officials: Carla Fountain, Meadow Overstreet, Alginnee Carr

Georgia Tech - 58

Record: 4-9 (2-3)

NO. Name	Min	FG	3P	FT	Rebounds	Fouls	TP	AS	TO	ST	Blocks	+/-
		M/A	M/A	M/A	OR DR TOT	PF FO					BS BA	
20 Ariadna Termis	C 24:15	2-6	1-4	0-0	2 2	1 0	5	3	1	0	1 1	-23
3 Erica Moon	G 24:01	1-6	0-3	0-0	0 2 2	2 1	2	2	0	1	0 1	-31
5 Catherine Alben	G 22:29	8-15	0-4	2-3	0 4 4	2 2	18	1	1	1	0 0	-3
21 Talayah Walker	G 34:42	6-12	4-7	4-4	0 5 5	0 2	20	1	2	0	0 0	-28
23 La'Nya Foster	G 32:03	2-9	1-2	0-0	3 5 8	2 0	5	3	1	0	0 1	-11
33 Savannah Samuel	16:30	2-5	0-1	0-0	0 1 1	3 0	4	0	3	1	0 1	-18
0 Brianna Turnage	18:59	1-1	0-0	0-0	0 3 3	0 0	2	4	1	2	1 0	-13
32 D'Asia Thomas-Harris	17:34	1-10	0-6	0-0	0 2 2	2 1	2	1	1	1	0 1	-9
12 Jada Crawshaw	09:27	0-1	0-0	0-0	0 1 1	0 0	0	0	2	0	0 0	-9
Team					1 2 3	0 0	0	0	0	0	0 0	
Totals		23-65	6-27	6-7	4 27 31	12 6 58	15	12	6	2	5 19	

Major Fouls: NONE

Shooting By Period	1st FG%	2nd FG%	3rd FG%	4th FG%	GM FG%
	7-15 46.7%	4-8 50.0%	5-17 29.4%	1-7 14.3%	23-65 35.4%
	3PT% 4-8 50.0%	3PT% 1-6 16.7%	3PT% 0-0 0%	3PT% 0-0 0%	3PT% 5-23 21.7%
	FT% 6-7 85.7%	FT% 0-0 0%	FT% 0-0 0%	FT% 0-0 0%	FT% 6-7 85.7%

Dead Ball Rebounds: 0, 0

Wofford - 63

Record: 5-8

NO. Name	Min	FG	3P	FT	Rebounds	Fouls	TP	AS	TO	ST	Blocks	+/-
		M/A	M/A	M/A	OR DR TOT	PF FO					BS BA	
13 Toni Warren	F 31:54	3-13	1-3	0-0	2 5 7	0 1	7	3	0	2	1 0	-18
21 Ma Flor	F 33:20	3-7	2-5	0-0	0 3 3	4 3	8	1	0	1	1 0	-18
2 Maddie Heiss	G 34:30	5-15	3-9	2-2	1 2 3	1 0	15	1	1	0	2 4	
5 Molly Messingale	G 32:01	3-9	3-5	4-4	0 2 2	1 2	13	2	0	0	2 1	-21
8 Gabby Mundy	G 37:14	6-18	1-5	3-5	1 1 2	2 6	16	7	4	3	0 0	-6
1 Elli Porter	G 13:29	1-3	1-3	0-0	1 0 1	2 0	3	0	0	0	0 0	-7
3 Courtney Swidar	08:52	0-1	0-1	0-0	0 1 1	3 1	0	0	0	0	2 0	4
52 Brady Branam	01:03	0-0	0-0	0-0	1 1 0	0 0	0	1	0	0	0 0	0
4 Sophia Rueppell	02:46	0-1	0-1	0-0	0 0 0	0 0	0	0	0	0	0 0	-10
10 Sara Deidda	04:51	0-1	0-1	1-2	0 1 1	0 1	1	0	1	0	0 0	0
Team					2 5 7	0 0	0	0	0	0	0 0	
Totals		21-68	11-33	10-13	7 21 28	13 14	63	15	6	6	3 18	

Major Fouls: NONE

Shooting By Period	1st FG%	2nd FG%	3rd FG%	4th FG%	GM FG%
	6-16 37.5%	3-7 42.9%	4-17 23.5%	8-19 42.1%	21-68 30.9%
	3PT% 4-7 57.1%	3PT% 0-0 0%	3PT% 1-7 14.3%	3PT% 2-11 18.2%	3PT% 7-33 21.2%
	FT% 10-13 76.9%	FT% 0-0 0%	FT% 4-6 66.7%	FT% 10-13 76.9%	FT% 10-13 76.9%

Dead Ball Rebounds: 1, 0

NC State - 87

Record: 8-4 (2-0)

NO. Name	Min	FG	3P	FT	Rebounds	Fouls	TP	AS	TO	ST	Blocks	+/-
		M/A	M/A	M/A	OR DR TOT	PF FO					BS BA	
12 Khamil Pierre	F 25:22	6-10	0-0	1-2	0 9 9	1 1	13	3	1	2	1 0	28
18 Tilda Trygger	F 26:33	5-9	0-3	0-0	1 7 8	3 0	10	0	0	1 2	1 34	
0 Devyn Dupleay	G 16:54	2-6	0-3	1-2	0 4 4	0 1	5	3	2	0	0 0	1
3 Zamareya Jones	G 27:44	7-9	3-5	0-0	0 2 2	1 0	17	7	1	0	0 0	37
35 Zoe Brooks	G 22:04	4-9	0-2	2-2	0 3 3	0 1	10	2	0	1	1 0	25
2 Qadance Samuels	21:58	3-6	2-4	2-2	1 5 6	1 1	10	2	0	2	1 0	30
7 Destiny Lunan	21:20	4-8	2-3	0-0	0 2 2	1 2	10	5	4	1	0 1	8
11 Maddie Cox	19:20	3-4	1-2	0-0	2 4 6	1 1	7	1	2	0	0 0	9
10 Adelaide Jernigan	10:00	2-6	1-4	0-0	0 0 0	1 0	5	0	0	0	0 0	-14
42 Mallory Collier	08:45	0-1	0-0	0-0	0 1 1	0 2	0	0	1	0	0 0	-13
Team					2 1 3	0 0	0	0	0	0	0 0	
Totals		36-68	9-26	6-8	6 38 44	6 12	87	23	11	7	5 2	29

Major Fouls: NONE

Shooting By Period	1st FG%	2nd FG%	3rd FG%	4th FG%	GM FG%
	10-19 52.6%	4-10 40.0%	13-16 81.3%	4-14 28.6%	36-68 52.9%
	3PT% 4-10 40.0%	3PT% 2-2 100%	3PT% 2-3 66.7%	3PT% 1-2 50%	3PT% 9-26 34.6%
	FT% 1-2 50%	FT% 0-0 0%	FT% 0-0 0%	FT% 6-8 75.0%	FT% 6-8 75.0%

Dead Ball Rebounds: 1, 1

Georgia Tech - 79

Record: 5-9

NO. Name	Min	FG	3P	FT	Rebounds	Fouls	TP	AS	TO	ST	Blocks	+/-
		M/A	M/A	M/A	OR DR TOT	PF FO					BS BA	
20 Ariadna Termis	C 27:12	1-2	0-0	0-0	1 3 4	2 1	2	4	3	1	1 0	19
0 Brianna Turnage	G 32:00	3-5	0-0	0-2	5 12 17	0 1	6	7	2	1	1 1	9
3 Erica Moon	G 37:14	4-7	2-5	1-2	0 8 8	2 2	11	9	2	0	0 0	6
21 Talayah Walker	G 30:19	8-14	2-4	2-2	2 5 7	4 2	22	3	2	0	0 1	25
23 La'Nya Foster	G 35:07	6-13	3-6	0-0	0 5 5	0 0	15	3	0	0	0 1	14
5 Catherine Alben	10:23	1-4	0-2	0-0	1 1 2	1 0	2	2	0	0	0 1	8
32 D'Asia Thomas-Harris	04:39	1-3	0-0	0-0	0 0 0	4 0	2	0	3	1	0 1	-9
12 Jada Crawshaw	16:09	6-11	0-0	2-4	2 4 6	1 4	14	1	2	2	0 1	13
33 Savannah Samuel	06:57	1-4	0-2	3-4	0 1 1	1 3	5	0	0	0	1 0	-5
Team					2 3 5	0 0	0	0	0	0	0 0	
Totals		32-63	7-19	8-14	13 42 55	15 13	79	29	14	5	3 6	16

Major Fouls: Walker (F1) 4 3 14

Shooting By Period	1st FG%	2nd FG%	3rd FG%	4th FG%	GM FG%
	13-16 81.3%	3-7 42.9%	4-17 23.5%	8-19 42.1%	32-63 50.8%
	3PT% 2-3 66.7%	3PT% 0-0 0%	3PT% 1-7 14.3%	3PT% 2-11 18.2%	3PT% 7-19 36.8%
	FT% 10-13 76.9%	FT% 0-0 0%	FT% 4-6 66.7%	FT% 10-13 76.9%	FT% 8-14 57.1%

Dead Ball Rebounds: 3, 0

	GT	NCSU
Biggest lead	2 (1 st 4:26)	43 (3 rd 0:20)
Best Scoring Run	6 (4 th 8:10)	20 (3 rd 0:20)
Lead Changes	2	
Times Tied	3	
Time with Lead	00:20	37:12

Points from Turnovers	GT	NCSU
Paint	20	34
Second Chance	2	5
Fast Breaks	14	17
Bench	8	32

Period by Period Scoring	1st	2nd	3rd	4th	TOT
GT	20	11	3	24	58
NCSU	26	29	22	10	87

	WOF	GT
Biggest lead	0 (1 st 10:00)	22 (2 nd 4:01)
Best Scoring Run	9 (4 th 3:14)	14 (2 nd 4:01)
Lead Changes	0	
Times Tied	0	
Time with Lead	00:00	39:33

Points from Turnovers	WOF	GT
Paint	14	44
Second Chance	6	10
Fast Breaks	6	9
Bench	4	23

Period by Period Scoring	1st	2nd	3rd	4th	TOT
WOF	16	11	13	23	63
GT	28	20	11	20	79



Official Basketball Box Score - Final
Notre Dame at Georgia Tech
01/01/26 McCamish Pavilion, Atlanta
2025-26 Women's Basketball

Game Time: 4:00 PM
Game Duration: 2:11
Attendance: 3,759



Official Basketball Box Score - Final
Georgia Tech at SMU
01/04/26 Moody Coliseum, Dallas
2025-26 Women's Basketball

Game Time: 3:02 PM
Game Duration: 1:50
Attendance: 1,530

Officials: Michael Price, Sall Esho, Linda Miles

Officials: Tyler Trimble, Bryan Brunette, Ashlee Goode

Notre Dame - 90

Record: 10-3 (2-1)

NO. Name	Min	FG	3P	FT	Rebounds	Fouls	TP	AS	TO	ST	Blocks	+/-
		M/A	M/A	M/A	OR DR TOT	PF FO					BS BA	
5 Melaya Cowles	F 39:28	6-10	0-0	2-4	3 4 7	4 2	14	2	2	2	1 1	1
30 Gisela Sanchez	F 24:01	2-7	0-2	0-0	3 3 6	1 0	4	2	1	0	0 0	-5
2 Vanessa de Jesus	G 40:28	6-9	4-5	0-0	2 4 6	3 0	16	4	2	2	1 0	-1
3 Hannah Hidalgo	G 44:07	10-25	1-3	5-8	0 4 4	4 6	26	10	4	8	0 0	7
8 Cassandre Prosper	G 38:36	8-15	0-2	3-5	4 6 10	4 5	19	4	2	1	1 0	-2
23 Jlyana Moore	38:20	3-8	3-4	2-2	0 1 1	2 2	11	0	3	0	0 0	-11
Team					2 0 2	0 0	0	0	2	0	0 0	
Totals		35-74	8-16	12-19	14 22 36	18 15	90	22	16	13	3 1	-5

Major Fouls: NONE

Shooting By Period	1st FG%	2nd FG%	3rd FG%	4th FG%	GM FG%
	6-16 37.5%	3-7 42.9%	4-17 23.5%	8-19 42.1%	35-74 47.3%
	3PT% 1-3 33.3%	3PT% 1-3 33.3%	3PT% 1-7 14.3%	3PT% 1-2 50%	3PT% 4-10 40.0%
	FT% 1-2 50%	FT% 0-0 0%	FT% 0-0 0%	FT% 1-2 50%	FT% 12-19 63.2%

Dead Ball Rebounds: 1, 0

Georgia Tech - 67

Record: 7-9 (0-4)

NO. Name	Min	FG	3P	FT	Rebounds	Fouls	TP	AS	TO	ST	Blocks	+/-
		M-A	M-A	M-A	OR DR TOT	PF FO					BS BA	
20 Ariadna Termis	C 20:02	1-3	0-2	0-0	0 2 2	0 0	2	0	1	0	1	0 -9
0 Brianna Turnage	G 27:27	1-2	0-0	0-0	1 9 10	2 0	2	1	5	0	1	0 -1
3 Erica Moon	G 32:09	1-4	0-1	0-0	0 1 1	1 1	2	4	5	1	0	0 3
21 Talayah Walker	G 36:19	9-13	1-2	11-12	2 9 11	3 6	30	2	3	7	2	0 15
23 La'Nya Foster	G 27:19	4-16	0-3	0-0	6 2 8	0 0	8	3	2	1	0	1 8
5 Catherine Abben	28:05	1-2	3-5	1-2	0 1 1	0 1	12	2	2	0	0	2 10
12 Jada Crawshaw	20:39	4-6	0-0	1-2	2 3 5	2 2	9	0	1	2	4	0 15
33 Savannah Samuel	08:01	1-2	0-0	0-0	0 0 0	3 0	2	1	0	1	0	0 -2
Team					1 1 2	0 0	1	1	1	1	1	



2025-26 GAME-BY-GAME BOX SCORES



Official Basketball Box Score - Final
Virginia at Georgia Tech
01/08/26 McCamish Pavilion, Atlanta
2025-26 Women's Basketball

Game Time: 7:00 PM
Game Duration: 2:05
Attendance: 1,526

Officials: Ed Sidasky, Krystle Apellaniz, Josh Howell

Virginia - 61

Record: 13-3 (5-0)

NO. Name	Min	FG M-A	3P M-A	FT M-A	Rebounds OR DR TOT	Fouls PF FO	TP	AS	TO	ST	Blocks BS BA	+/-
7 Tabitha Amanze	F 29:59	4-15	0-0	3-5	5 7 12	1 5	11	1	3	1	3 3 5	
12 Caitlin Weimar	F 29:56	4-10	0-0	0-0	4 2 6	3 4	8	1	4	1	6 0 5	
1 Paris Clark	G 30:08	5-8	2-2	2-2	0 1 1	1 2	14	3	1	0	1 0 2	
21 Kymora Johnson	G 34:49	3-10	2-5	4-6	0 6 6	2 5	12	6	1	1	0 0 0	
23 Romi Levy	G 20:57	4-8	0-2	0-0	1 0 1	3 0	8	3	2	3	1 0 8	
4 Jillian Brown	20:02	1-3	1-2	0-0	1 6 7	1 0	3	2	2	0	1 0 -4	
8 Adeang Ring	17:33	1-3	0-1	1-3	0 1 1	1 2	3	1	1	0	1 0 -2	
3 Gabby White	06:46	1-2	0-0	0-2	1 2 3	3 1	2	0	4	0	0 1 1	
32 Breona Hurd	09:50	0-1	0-1	0-2	4 0 4	3 2	0	1	1	0	0 0 -5	
Team					1 3 4	0 0						
Totals		23-60	5-13	10-20	17 28 45	18 21	61	18	19	6	13 4 2	

Major Fouls: NONE

Shooting By Period			
1 st FG%	5-12	41.7%	
3PT%	1-4	25.0%	
FT%	2-5	40%	
2 nd FG%	8-19	42.1%	
3PT%	2-3	66.7%	
FT%	0-0	0%	
3 rd FG%	8-16	50.0%	
3PT%	2-4	50.0%	
FT%	4-5	80%	
4 th FG%	2-13	15.4%	
3PT%	0-2	0.0%	
FT%	4-10	40%	
GM FG%	23-60	38.3%	
3PT%	5-13	38.5%	
FT%	10-20	50.0%	

Dead Ball Rebounds: 8, 2

Georgia Tech - 59

Record: 7-10 (2-3)

NO. Name	Min	FG M-A	3P M-A	FT M-A	Rebounds OR DR TOT	Fouls PF FO	TP	AS	TO	ST	Blocks BS BA	+/-
20 Ariadna Termis	C 14:13	1-2	0-1	0-0	0 0 0	3 0	2	0	1	1	1 0 -7	
0 Brianna Turnage	G 40:00	4-5	0-0	1-2	2 5 7	2 1	9	3	3	5	2 1 -2	
3 Erica Moon	G 33:18	0-5	0-1	4-5	0 1 1	1 4	4	3	1	1	1 1 -14	
21 Talayah Walker	G 40:00	4-23	2-6	11-12	5 3 8	1 8	21	1	2	2	0 9 -2	
23 La'Nya Foster	G 15:07	1-3	0-2	2-2	1 1 2	1 1	4	0	2	0	0 0 -11	
5 Catherine Alben	25:47	2-6	1-5	3-4	0 3 3	4 2	8	3	2	1	0 0 9	
12 Jada Crawshaw	12:36	3-9	0-0	1-1	3 2 5	5 1	7	1	0	1	0 1 5	
33 Savannah Samuel	09:57	1-5	0-2	0-0	0 0 0	0 1	2	0	0	0	0 0 13	
32 D'Asia Thomas-Harris	09:02	1-3	0-1	0-0	2 0 2	4 0	2	0	0	0	0 1 -1	
Team					2 5 7	0 0			1			
Totals		17-61	3-18	22-26	15 20 35	21 18	59	11	12	11	4 13 -2	

Major Fouls: NONE

Shooting By Period			
1 st FG%	4-17	23.5%	
3PT%	0-6	0.0%	
FT%	7-8	87.5%	
2 nd FG%	2-15	13.3%	
3PT%	0-4	0.0%	
FT%	7-7	100%	
3 rd FG%	7-15	46.7%	
3PT%	2-6	33.3%	
FT%	4-5	80%	
4 th FG%	4-14	28.6%	
3PT%	1-2	50.0%	
FT%	4-6	66.7%	
GM FG%	17-61	27.9%	
3PT%	3-18	16.7%	
FT%	22-26	84.6%	

Dead Ball Rebounds: 3, 2

	UVA	GT	Points from	UVA	GT	Period by Period Scoring				
Biggest lead	9 (1 st 7:19)	2 (1 st 0:02)	Turnovers	6	22					
Best Scoring Run	10 (2 nd 4:35)	9 (1 st 0:40)	Paint	30	22					
Lead Changes	2		Second Chance	14	9	UVA	13	18	22	8 61
Times Tied	3		Fast Breaks	2	8	GT	15	11	20	13 59
Time with Lead	37:16	01:35	Bench	8	19					



HEAD COACH KAREN BLAIR

First Season • SMU '99

Karen Blair was named the seventh head coach in Georgia Tech women's basketball history on April 6, 2025. A coaching veteran and one of the nation's top recruiters, Blair brings over 25 years of coaching experience to The Flats. Blair most recently spent the last seven seasons at Maryland, serving as associate head coach the final five, helping the Terrapins to three Big Ten titles and NCAA Tournament berths every season the tournament was held. During her tenure, the Terps advanced to four Sweet 16s and made an Elite Eight appearance in 2023. Prior to her seven successful seasons at Maryland, Blair held coaching stops at VCU, North Texas, Texas-Arlington, Colgate, and her alma mater, SMU.

One of the most decorated players in SMU women's basketball history, Blair was a three-year starting point guard and helped the Mustangs to NCAA Tournament berths. She graduated cum laude with a bachelor's degree in business administration from SMU in 1999.

THE BLAIR FILE

Hometown Richland, Michigan
Education SMU, 1999 (Business Administration)

PLAYING EXPERIENCE

1995-99 SMU (Point Guard)

COACHING EXPERIENCE

1999-2009 Assistant Coach, SMU
 2009-11 Assistant Coach/Recruiting Coordinator, Colgate
 2011-13 Assistant Coach, UT Arlington
 2013-15 Assistant Coach, North Texas
 2015-18 Associate Head Coach, VCU
 2018-20 Assistant Coach/Recruiting Coordinator, Maryland
 2020-25 Associate Head Coach, Maryland
 2025-Present Head Coach, Georgia Tech

COLLEGE COACHING RECORD

SEASON	SCHOOL	RECORD	CONF FINISH	POSTSEASON
1999-2000	SMU	22-9	1st WAC	NCAA Midwest - 2nd Rd
2000-01	SMU	17-12	3rd WAC	
2001-02	SMU	12-18	7th WAC	
2002-03	SMU	16-15	7th WAC	
2003-04	SMU	13-15	5th WAC	
2004-05	SMU	19-11	5th WAC	WNIT First Round
2005-06	SMU	16-14	3rd CUSA	
2006-07	SMU	18-12	6th CUSA	
2007-08	SMU	24-9	2nd CUSA	NCAA First Round
2008-09	SMU	20-12	1st CUSA	WNIT First Round
2009-10	Colgate	10-19	5th Patriot	
2010-11	Colgate	7-22	8th Patriot	
2011-12	UT Arlington	7-21	6th SLC West	
2012-13	UT Arlington	7-23	10th WAC	
2013-14	North Texas	12-18	7th CUSA	
2014-15	North Texas	5-24	13th CUSA	
2015-16	VCU	23-10	5th A-10	WNIT First Round
2016-17	VCU	16-15	7th A-10	
2017-18	VCU	7-22	11th A-10	
2018-19	Maryland	29-5	1st Big Ten	NCAA Second Round
2019-20	Maryland	28-4	1st Big Ten	No NCAA Tourney
2020-21	Maryland	26-3	1st Big Ten	NCAA Sweet 16
2021-22	Maryland	23-9	T-3rd Big Ten	NCAA Sweet 16
2022-23	Maryland	28-7	T-2nd Big Ten	NCAA Elite Eight
2023-24	Maryland	19-14	T-6th Big Ten	NCAA First Round
2024-25	Maryland	25-8	T-3rd Big Ten	NCAA Sweet 16
2025-26	Georgia Tech	7-10		

Bold = Head Coach

HEAD COACH (ONE SEASON)	7-10 (.412)
ASSISTANT COACH (26 SEASONS)	449-351 (.561)
27 OVERALL SEASONS	456-360 (.559)
SMU (10 Seasons)	177-127 (.582)
Colgate (Two Seasons)	17-41 (.293)
UT Arlington (Two Seasons)	14-44 (.241)
North Texas (Two Seasons)	17-42 (.288)
VCU (Three Seasons)	46-47 (.495)
Maryland (Seven Seasons)	178-50 (.781)
Georgia Tech (One Season)	7-10 (.412)



#0 BRIANNA TURNAGE

Senior • 6-1 • Guard • Atlanta, Ga. • Florida State/Westlake HS • Major: History, Technology & Society

THE TURNAGE FILE

THIS SEASON:

- Three games of 10+ rebounds in the last four
- Double-double (13 rebounds, 10 assists) in win over #18 Notre Dame
- Leads team in blocks (14), steals (22) and rebounds (129)
- Set career-highs in rebounds (17) and assists (7) vs. Wofford - the most rebounds by a Jacket since 2023
- Finished a rebound shy of a double-double vs. JU (10 pts, 9 reb)

LAST FIVE GAMES:

- 4.4 PPG
- 10.0 RPG - team-high
- 66.7% FG (10-for-15)
- 25 assists - team-high
- 5 blocks
- 10 steals - tied team-high

KEY SEASON AVERAGES

Points Rebounds Field Goal
4.5 **8.6** **54.1**

CAREER & SEASON HIGHS

Points

Season: 10 vs. Jacksonville (Nov. 16, 2025)

Career: 14 vs. Presbyterian (Dec. 15, 2022)*

Field Goals

Season: 5 vs. Jacksonville (Nov. 16, 2025)

Career: 5 vs. Jacksonville (Nov. 16, 2025)

Field Goals Attempted

Season: 9 vs. Jacksonville (Nov. 16, 2025)

Career: 9 (2x), last: vs. JU (Nov. 16, 2025)

3- Point Field Goals

Season: N/A

Career: 3 (3x), last: vs. Drexel (Dec. 15, 2024)*

3- Point Field Goals Attempted

Season: N/A

Career: 8 vs. North Carolina (Jan. 11, 2024)*

Free Throws

Season: 2 (2x), last: at Wake Forest (Dec. 14, 2025)

Career: 4 vs. Presbyterian (Dec. 15, 2022)*

Free Throws Attempted

Season: 6 at Georgia (Nov. 23, 2025)

Career: 6 (2x), last: at Georgia (Nov. 23, 2025)

Rebounds

Season: 17 vs. Wofford (Dec. 28, 2025)

Career: 17 vs. Wofford (Dec. 28, 2025)

Assists

Season: 10 vs. Notre Dame (Jan. 1, 2026)

Career: 10 vs. Notre Dame (Jan. 1, 2026)

Steals

Season: 5 vs. Virginia (Jan. 8, 2026)

Career: 5 vs. Virginia (Jan. 8, 2026)

Blocks

Season: 4 vs. West Georgia (Nov. 19, 2025)

Career: 4 vs. West Georgia (Nov. 19, 2025)

Turnovers

Season: 5 at SMU (Jan. 4, 2026)

Career: 5 vs. Notre Dame (Feb. 11, 2024)*

Minutes

Season: 41 vs. Notre Dame (Jan. 1, 2026)

Career: 41 vs. Notre Dame (Jan. 1, 2026)

Miscellaneous

	Career	25-26
Double-Doubles:	2	1
Double Figure Points:	4	1
Double Figure Rebounds:	12	8
20+ Points:	-	-

*Set at Florida State

2025-26 GAME-BY-GAME

#0 TURNAGE, Brianna

Opponent	Date	GS	MIN	Total		3-Pointers		Free throws		Rebounds				PF	A	TO	BLK	STL	PTS	AVG	
				FG-FGA	PCT	3FG-3FGA	PCT	FT-FTA	PCT	OFF	DEF	TOT	AVG								
Radford	11/06/2025	*	27:09	1-3	.333	0-0	.000	0-0	.000	2	9	11	11.0	0	2	1	1	2	2	2.0	
Princeton	11/09/2025	*	29:09	2-4	.500	0-0	.000	1-5	.200	2	8	10	10.5	3	1	2	0	2	5	3.5	
Charleston So.	11/13/2025	*	17:33	1-4	.250	0-0	.000	1-2	.500	3	10	13	11.3	0	6	1	0	1	3	3.3	
Jacksonville	11/16/2025	*	26:34	5-9	.556	0-0	.000	0-4	.000	7	2	9	10.8	4	2	3	1	1	10	5.0	
West Ga.	11/19/2025	*	27:59	2-4	.500	0-0	.000	1-2	.500	3	8	11	10.8	3	5	4	4	1	5	5.0	
at Georgia	11/23/2025	*	20:48	1-1	1.000	0-0	.000	2-6	.333	1	8	9	10.5	2	0	4	0	0	4	4.8	
vs St. John's (NY)	11/28/2025	*	19:50	2-6	.333	0-0	.000	1-1	1.000	2	2	4	9.6	0	1	1	0	3	5	4.9	
vs Florida	11/29/2025	*	22:08	4-6	.667	0-0	.000	1-2	.500	5	3	8	9.4	1	1	4	2	3	9	5.4	
at Texas A&M	12/03/2025	*	28:17	2-4	.500	0-1	.000	0-0	.000	2	6	8	9.2	1	1	3	2	0	4	5.2	
Norfolk St.	12/08/2025		10:42	2-2	1.000	0-0	.000	0-0	.000	1	1	2	8.5	2	2	1	0	2	4	5.1	
at West Virginia	12/11/2025	*	09:21	0-0	.000	0-0	.000	0-0	.000	0	1	1	7.8	1	0	1	0	1	0	4.6	
at Wake Forest	12/14/2025	*	26:01	1-3	.333	0-0	.000	2-4	.500	2	8	10	8.0	2	2	2	2	1	4	4.6	
at NC State	12/18/2025		18:59	1-1	1.000	0-0	.000	0-0	.000	0	3	3	7.6	0	4	1	1	2	2	4.4	
Wofford	12/28/2025	*	32:00	3-5	.600	0-0	.000	0-2	.000	5	12	17	8.3	0	7	2	1	1	6	4.5	
Notre Dame	01/01/2026	*	40:44	1-2	.500	0-0	.000	1-2	.500	1	12	13	8.6	1	10	2	0	2	3	4.4	
at SMU	01/04/2026	*	27:27	1-2	.500	0-0	.000	0-0	.000	1	9	10	8.7	2	1	5	1	0	2	4.3	
Virginia	01/08/2026	*	40:00	4-5	.800	0-0	.000	1-2	.500	2	5	7	8.6	2	3	3	2	5	9	4.5	
Totals			15	424:38	33-61	.541	0-1	.000	11-32	.344	39	107	146	8.6	24	48	40	17	27	77	4.5

Player Averages

Games Played	Minutes/game	Points/game	FG Pct	3FG Pct	FT Pct	Rebounds/game	Assists/game	Turnovers/game	Assist/Turnover ratio	Steals/game	Blocks/game
17	25.0	4.5	54.1	0.0	34.4	8.6	2.8	2.4	1.2	1.6	1.0

TURNAGE CAREER STATISTICS

TURNAGE, Brianna

SEASON	TEAM	GP-GS	MIN/AVG	Field Goals		3-Point		F-Throws		Rebounds				Scoring						
				FG-FGA	FG%	3FG-3FGA	3FG%	FT-FTA	FT%	OFF	DEF	TOT	AVG	PF-FO	A	TO	BLK	STL	PTS	AVG
2022-23	FSU	23-0	315/13.7	18-59	.305	9-38	.237	6-8	.750	13	55	68	3.0	10-0	20	9	19	8	51	2.2
2023-24	FSU	34-19	689/20.3	25-89	.281	16-61	.262	7-15	.467	43	167	210	6.2	34-0	47	37	11	20	73	2.1
2024-25	FSU	33-11	457/13.9	21-60	.350	9-36	.250	5-13	.385	28	85	113	3.4	26-0	35	21	12	10	56	1.7
2025-26	GaTech	17-15	425/25.0	33-61	.541	0-1	.000	11-32	.344	39	107	146	8.6	24-0	48	40	17	27	77	4.5
TOTAL FOR GaTech		17-15	425/25.0	33-61	.541	0-1	.000	11-32	.344	39	107	146	8.6	24-0	48	40	17	27	77	4.5
TOTAL		107-45	1886/17.6	97-269	.361	34-136	.250	29-68	.426	123	414	537	5.0	94-0	150	107	59	65	257	2.4



#1 McKAYLA TAYLOR

Freshman • 6-1 • Center • Atlanta, Ga. • Langston Hughes HS • Major: Business Administration

THE TAYLOR FILE

THIS SEASON:

LAST FIVE GAMES:

KEY SEASON AVERAGES

Points	Rebounds	Assists
--	--	--

CAREER & SEASON HIGHS

Points

Season:

Career:

Field Goals

Season:

Career:

Field Goals Attempted

Season:

Career:

3- Point Field Goals

Season:

Career:

3- Point Field Goals Attempted

Season:

Career:

Free Throws

Season:

Career:

Free Throws Attempted

Season:

Career:

Rebounds

Season:

Career:

Assists

Season:

Career:

Steals

Season:

Career:

Blocks

Season:

Career:

Turnovers

Season:

Career:

Minutes

Season:

Career:

Miscellaneous

	Career	25-26
Double-Doubles:	-	-
Double Figure Points:	--	--
Double Figure Rebounds:	-	-
20+ Points:	-	-

2025-26 GAME-BY-GAME

TAYLOR CAREER STATISTICS



#3 ERICA MOON

Fr-Sophomore • 5-6 • Guard • Atlanta, Ga. • Texas A&M/St. Francis HS • Major: Literature, Media & Communications

THE MOON FILE

THIS SEASON:

- Leads team in assists in 2025-26 (64)
- Career-high 12 points vs. Notre Dame - played all 45 minutes
- Set career-highs in rebounds (8) and assists (9) in a near-triple-double day vs. Wofford on Dec. 28
- Eight points at Wake Forest (Dec. 14)
- Started in every game for Tech this season

LAST FIVE GAMES:

- 6.2 PPG
- 3.2 RPG
- 33.3% FG (11-for-33)
- 24 assists
- 1 block
- 5 steals

KEY SEASON AVERAGES

Points
4.5

Rebounds
3.0

Assists
3.8

CAREER & SEASON HIGHS

Points

Season: 12 vs. Notre Dame (Jan. 1, 2026)

Career: 12 vs. Notre Dame (Jan. 1, 2026)

Field Goals

Season: 5 vs. Notre Dame (Jan. 1, 2026)

Career: 5 vs. Notre Dame (Jan. 1, 2026)

Field Goals Attempted

Season: 11 vs. Notre Dame (Jan. 1, 2026)

Career: 11 vs. Notre Dame (Jan. 1, 2026)

3- Point Field Goals

Season: 2 (2x), last: vs. Wofford (Dec. 28, 2025)

Career: 2 (2x), last: vs. Wofford (Dec. 28, 2025)

3- Point Field Goals Attempted

Season: 6 at Wake Forest (Dec. 14, 2025)

Career: 6 at Wake Forest (Dec. 14, 2025)

Free Throws

Season: 4 vs. Virginia (Jan. 8, 2026)

Career: 4 vs. Virginia (Jan. 8, 2026)

Free Throws Attempted

Season: 5 vs. Virginia (Jan. 8, 2026)

Career: 5 vs. Virginia (Jan. 8, 2026)

Rebounds

Season: 8 vs. Wofford (Dec. 28, 2025)

Career: 8 vs. Wofford (Dec. 28, 2025)

Assists

Season: 9 vs. Wofford (Dec. 28, 2025)

Career: 9 vs. Wofford (Dec. 28, 2025)

Steals

Season: 3 vs. St. John's (Nov. 28, 2025)

Career: 3 (Four times)

Blocks

Season: 1 (Four times)

Career: 1 (Six times)

Turnovers

Season: 6 vs. Norfolk State (Dec. 8, 2025)

Career: 6 vs. Norfolk State (Dec. 8, 2025)

Minutes

Season: 45 vs. Notre Dame (Jan. 1, 2026)

Career: 45 vs. Notre Dame (Jan. 1, 2026)

Miscellaneous

	Career	25-26
Double-Doubles:	-	-
Double Figure Points:	2	2
Double Figure Rebounds:	-	-
20+ Points:	-	-

*Set at Texas A&M

2025-26 GAME-BY-GAME

#3 MOON, Erica

Opponent	Date	GS	MIN	Total		3-Pointers		Free throws		Rebounds				PF	A	TO	BLK	STL	PTS	AVG
				FG-FGA	PCT	3FG-3FGA	PCT	FT-FTA	PCT	OFF	DEF	TOT	AVG							
Radford	11/06/2025	*	24:41	2-4	.500	1-2	.500	1-2	.500	0	1	1	1.0	2	6	2	1	1	6	6.0
Princeton	11/09/2025	*	14:27	1-4	.250	0-1	.000	2-2	1.000	0	2	2	1.5	0	2	1	0	1	4	5.0
Charleston So.	11/13/2025	*	05:05	1-2	.500	0-1	.000	0-0	.000	0	1	1	1.3	0	1	0	0	0	2	4.0
Jacksonville	11/16/2025	*	26:53	0-3	.000	0-2	.000	1-2	.500	1	4	5	2.3	2	3	4	1	0	1	3.3
West Ga.	11/19/2025	*	23:16	0-4	.000	0-2	.000	0-0	.000	0	1	1	2.0	1	3	0	0	0	0	2.6
at Georgia	11/23/2025	*	25:06	2-2	1.000	0-0	.000	1-2	.500	0	1	1	1.8	1	3	2	0	0	5	3.0
vs St. John's (NY)	11/28/2025	*	23:20	2-4	.500	0-1	.000	0-0	.000	0	2	2	1.9	1	7	0	0	3	4	3.1
vs Florida	11/29/2025	*	28:18	3-6	.500	0-1	.000	0-2	.000	2	3	5	2.3	2	2	5	0	1	6	3.5
at Texas A&M	12/03/2025	*	23:13	0-2	.000	0-1	.000	1-2	.500	0	5	5	2.6	4	3	1	0	0	1	3.2
Norfolk St.	12/08/2025	*	18:53	2-4	.500	1-3	.333	0-0	.000	0	4	4	2.7	1	5	6	0	1	5	3.4
at West Virginia	12/11/2025	*	19:26	1-3	.333	0-1	.000	1-1	1.000	0	3	3	2.7	4	2	3	0	2	3	3.4
at Wake Forest	12/14/2025	*	28:44	3-8	.375	2-6	.333	0-0	.000	1	4	5	2.9	2	3	5	1	2	8	3.8
at NC State	12/18/2025	*	24:01	1-6	.167	0-3	.000	0-0	.000	0	2	2	2.8	2	2	0	0	1	2	3.6
Wofford	12/28/2025	*	37:14	4-7	.571	2-5	.400	1-2	.500	0	8	8	3.2	2	9	2	0	0	11	4.1
Notre Dame	01/01/2026	*	44:60	5-11	.455	0-5	.000	2-2	1.000	0	4	4	3.3	1	6	2	0	2	12	4.7
at SMU	01/04/2026	*	32:09	1-4	.250	0-1	.000	0-0	.000	0	1	1	3.1	1	4	5	0	1	2	4.5
Virginia	01/08/2026	*	33:18	0-5	.000	0-1	.000	4-5	.800	0	1	1	3.0	1	3	1	1	1	4	4.5
Totals			17 433:03	28-79	.354	6-36	.167	14-22	.636	4	47	51	3.0	27	64	39	4	16	76	4.5

Player Averages

Games Played	Minutes/ game	Points/ game	FG Pct	3FG Pct	FT Pct	Rebounds/ game	Assists/ game	Turnovers/ game	Assist/Turnover ratio	Steals/ game	Blocks/ game
17	25.5	4.5	35.4	16.7	63.6	3.0	3.8	2.3	1.6	0.9	0.2

MOON CAREER STATISTICS

MOON, Erica

SEASON	TEAM	GP-GS	MIN/AVG	Field Goals		3-Point		F-Throws		Rebounds				Scoring	
				FG-FGA	FG%	3FG-3FGA	3FG%	FT-FTA	FT%	OFF	DEF	TOT	AVG	PF-FO	A
2024-25	AM	29-7	477/16.5	14-60	.233	4-33	.121	12-18	.667	6	32	38	1.3	44-0	67
2025-26	GaTech	17-17	433/25.5	28-79	.354	6-36	.167	14-22	.636	4	47	51	3.0	27-0	64
TOTAL FOR GaTech		17-17	433/25.5	28-79	.354	6-36	.167	14-22	.636	4	47	51	3.0	27-0	64
TOTAL		46-24	910/19.8	42-139	.302	10-69	.145	26-40	.650	10	79	89	1.9	71-0	131



#4 LEYRE URDIAIN

Freshman • 5-11 • Guard • Zaragoza, Spain • Sansueña

THE URDIAIN FILE

THIS SEASON: LAST FIVE GAMES:

KEY SEASON AVERAGES

Points	Rebounds	Assists
--	--	--

2025-26 GAME-BY-GAME

CAREER & SEASON HIGHS

Points	
Season:	
Career:	
Field Goals	
Season:	
Career:	
Field Goals Attempted	
Season:	
Career:	
3- Point Field Goals	
Season:	
Career:	
3- Point Field Goals Attempted	
Season:	
Career:	
Free Throws	
Season:	
Career:	
Free Throws Attempted	
Season:	
Career:	
Rebounds	
Season:	
Career:	
Assists	
Season:	
Career:	
Steals	
Season:	
Career:	
Blocks	
Season:	
Career:	
Turnovers	
Season:	
Career:	
Minutes	
Season:	
Career:	

Miscellaneous	Career	25-26
Double-Doubles:	-	-
Double Figure Points:	--	--
Double Figure Rebounds:	-	-
20+ Points:	-	-

URDIAIN CAREER STATISTICS



#5 CATHERINE ALBEN

Senior • 5-7 • Guard • Snellville, Ga. • Charleston Southern/Grayson HS

THE ALBEN FILE

THIS SEASON:

- 12 points at SMU
- 18 points off the bench in win over Notre Dame
- Made first start at GT on Dec. 18 at NC State; scored 18
- Recorded 20 points off the bench vs. Norfolk State (Dec. 8)
- Named to 2025 Cayman Islands Classic All-Tournament Team
- Scored a season-high 17 points vs. her former team (Nov. 13 vs. Charleston Southern).

LAST FIVE GAMES:

- 11.6 PPG
- 2.2 RPG
- 41.5% FG (22-for-53)
- 10 assists
- 4 steals

KEY SEASON AVERAGES

Points
11.1

Rebounds
3.1

Assists
2.4

CAREER & SEASON HIGHS

Points

Season: 20 vs. Norfolk State (Dec. 8, 2025)

Career: 29 at Radford (Jan. 18, 2025)*

Field Goals

Season: 8 (2x), last: at NC State (Dec. 18, 2025)

Career: 12 at Radford (Jan. 18, 2025)*

Field Goals Attempted

Season: 18 vs. St. John's (Nov. 28, 2025)

Career: 22 (2x), last: vs. Presbyterian (Jan. 7, 2023)*

3- Point Field Goals

Season: 4 vs. Notre Dame (Jan. 1, 2026)

Career: 6 at Presbyterian (Jan. 3, 2024)*

3- Point Field Goals Attempted

Season: 9 vs. Notre Dame (Jan. 1, 2026)

Career: 10 at Gardner-Webb (Jan. 2, 2025)*

Free Throws

Season: 4 vs. Charleston So. (Nov. 13, 2025)

Career: 10 at Gardner-Webb (Feb. 14, 2024)*

Free Throws Attempted

Season: 6 vs. Charleston So. (Nov. 13, 2025)

Career: 12 (2x), last: vs. USC Upstate (Jan. 29, 2025)*

Rebounds

Season: 7 at West Virginia (Dec. 11, 2025)

Career: 13 vs. Georgia College (Nov. 7, 2022)*

Assists

Season: 5 at Texas A&M (Dec. 3, 2025)

Career: 5 (2x), last: at Texas A&M (Dec. 3, 2025)

Steals

Season: 3 vs. Norfolk State (Dec. 8, 2025)

Career: 5 (3x), last: vs. Radford (Jan. 31, 2024)*

Blocks

Season: 1 (3x), last: vs. Florida (Nov. 29, 2025)

Career: 1 (13 times)

Turnovers

Season: 5 (2x), last: at WVU (Dec. 11, 2025)

Career: 8 at East Carolina (Dec. 21, 2023)*

Minutes

Season: 33 vs. St. John's (Nov. 28, 2025)

Career: 40 (2x), last: at UNC Asheville (Feb. 17, 2024)*

Miscellaneous

	Career	25-26
Double-Doubles:	1	-
Double Figure Points:	68	10
Double Figure Rebounds:	1	-
20+ Points:	19	1

*Set at Charleston Southern

2025-26 GAME-BY-GAME

#5 ALBEN, Catherine

Opponent	Date	GS	MIN	Total		3-Pointers		Free throws		Rebounds				PF	A	TO	BLK	STL	PTS	AVG
				FG-FGA	PCT	3FG-3FGA	PCT	FT-FTA	PCT	OFF	DEF	TOT	AVG							
Radford	11/06/2025		18:17	6-9	.667	1-3	.333	1-2	.500	0	2	2	2.0	1	4	2	0	2	14	14.0
Princeton	11/09/2025		26:29	5-9	.556	2-3	.667	3-4	.750	1	2	3	2.5	4	0	3	0	1	15	14.5
Charleston So.	11/13/2025		30:59	6-13	.462	1-1	1.000	4-6	.667	0	6	6	3.7	0	3	4	1	0	17	15.3
Jacksonville	11/16/2025		17:20	1-9	.111	0-3	.000	2-2	1.000	0	3	3	3.5	1	2	4	0	0	4	12.5
West Ga.	11/19/2025		16:57	3-7	.429	0-1	.000	0-0	.000	1	4	5	3.8	2	4	3	1	1	6	11.2
at Georgia	11/23/2025		23:37	4-7	.571	1-2	.500	3-3	1.000	0	0	0	3.2	1	2	3	0	0	12	11.3
vs St. John's (NY)	11/28/2025		33:48	7-18	.389	2-5	.400	2-4	.500	2	4	6	3.6	4	2	1	0	2	18	12.3
vs Florida	11/29/2025		20:29	4-10	.400	0-2	.000	2-2	1.000	2	0	2	3.4	5	1	0	1	0	10	12.0
at Texas A&M	12/03/2025		22:18	3-8	.375	0-3	.000	2-3	.667	0	2	2	3.2	3	5	5	0	0	8	11.6
Norfolk St.	12/08/2025		27:21	8-17	.471	2-5	.400	2-3	.667	0	1	1	3.0	2	0	4	0	3	20	12.4
at West Virginia	12/11/2025		31:07	2-14	.143	0-3	.000	0-0	.000	2	5	7	3.4	3	3	5	0	2	4	11.6
at Wake Forest	12/14/2025		21:16	1-10	.100	0-6	.000	0-0	.000	1	3	4	3.4	3	4	1	0	0	2	10.8
at NC State	12/18/2025	*	22:29	8-15	.533	0-4	.000	2-3	.667	0	4	4	3.5	2	1	1	0	1	18	11.4
Wofford	12/28/2025		10:23	1-4	.250	0-2	.000	0-0	.000	1	1	2	3.4	1	2	0	0	0	2	10.7
Notre Dame	01/01/2026		32:41	7-16	.438	4-9	.444	0-0	.000	1	0	1	3.2	2	2	4	0	2	18	11.2
at SMU	01/04/2026		28:05	4-12	.333	3-5	.600	1-2	.500	0	1	1	3.1	0	2	2	0	0	12	11.3
Virginia	01/08/2026		25:47	2-6	.333	1-5	.200	3-4	.750	0	3	3	3.1	4	3	2	0	1	8	11.1
Totals			1	409:23	.391	17-62	.274	27-38	.711	11	41	52	3.1	38	40	44	3	15	188	11.1

Player Averages

Games Played	Minutes/ game	Points/ game	FG Pct	3FG Pct	FT Pct	Rebounds/ game	Assists/ game	Turnovers/ game	Assist/Turnover ratio	Steals/ game	Blocks/ game
17	24.1	11.1	39.1	27.4	71.1	3.1	2.4	2.6	0.9	0.9	0.2

ALBEN CAREER STATISTICS

ALBEN, Catherine

		Field Goals				3-Point		F-Throws		Rebounds				Scoring						
SEASON	TEAM	GP-GS	MIN/AVG	FG-FGA	FG%	3FG-3FGA	3FG%	FT-FTA	FT%	OFF	DEF	TOT	AVG	PF-FO	A	TO	BLK	STL	PTS	AVG
2022-23	ChaSou	29-2	582/20.1	107-299	.358	17-74	.230	47-72	.653	33	71	104	3.6	67-3	36	86	6	33	278	9.6
2023-24	ChaSou	30-30	994/33.1	154-425	.362	46-142	.324	64-86	.744	25	92	117	3.9	82-2	58	101	2	51	418	13.9
2024-25	ChaSou	29-28	839/28.9	175-417	.420	55-170	.324	77-96	.802	38	73	111	3.8	53-0	46	78	2	42	482	16.6
2025-26	GaTech	17-1	409/24.1	72-184	.391	17-62	.274	27-38	.711	11	41	52	3.1	38-1	40	44	3	15	188	11.1
TOTAL FOR GaTech		17-1	409/24.1	72-184	.391	17-62	.274	27-38	.711	11	41	52	3.1	38-1	40	44	3	15	188	11.1
TOTAL		105-61	2824/26.9	508-1325	.383	135-448	.301	215-292	.736	107	277	384	3.7	240-6	180	309	13	141	1366	13.0



#12 JADA CRAWSHAW

Junior • 6-1 • Forward • Darwin, Australia • Long Beach State • Major: Literature, Media & Communications

THE CRAWSHAW FILE

THIS SEASON:

- 50.7% from the floor this season
- 14 points and six rebounds in 16 minutes of action vs. Wofford
- Had 10 points and six rebounds at Georgia (Nov. 23)
- 11 points and eight boards in 20 minutes of action vs. UWG (Nov. 19)
- Season-high 10 points on Nov. 13 vs. Charleston Southern
- Scored nine points in 11 minutes of game time against Radford

LAST FIVE GAMES:

- 6.6 PPG
- 3.8 RPG
- 48.3% FG (14-for-29)
- 2 assists
- 4 blocks
- 5 steals

KEY SEASON AVERAGES

Points Rebounds Field Goal
6.6 4.0 50.7

CAREER & SEASON HIGHS

Points

Season: 14 vs. Wofford (Dec. 28, 2025)
Career: 20 (2x), last: vs. CSUN (Jan. 23, 2025)*

Field Goals

Season: 6 vs. Wofford (Dec. 28, 2025)
Career: 9 vs. UCLA (Dec. 14, 2024)*

Field Goals Attempted

Season: 11 vs. Wofford (Dec. 28, 2025)
Career: 20 vs. CSUN (Jan. 23, 2025)*

3- Point Field Goals

Season: 1 at Georgia (Nov. 23, 2025)
Career: 2 (Five times)*

3- Point Field Goals Attempted

Season: 2 at Georgia (Nov. 23, 2025)
Career: 5 vs. UCLA (Dec. 14, 2024)*

Free Throws

Season: 3 at Georgia (Nov. 23, 2025)
Career: 7 vs. CSU Bakersfield (Jan. 4, 2025)*

Free Throws Attempted

Season: 4 (Six times)
Career: 9 vs. UC Santa Barbara (Feb. 1, 2025)*

Rebounds

Season: 8 (2x), last: vs. UWG (Nov. 19, 2025)
Career: 12 (3x), last: vs. CSUN (Jan. 23, 2025)*

Assists

Season: 2 (2x), last: at WVU (Dec. 11, 2025)
Career: 5 at UC Irvine (Jan. 30, 2025)*

Steals

Season: 4 at Georgia (Nov. 23, 2025)
Career: 4 at Georgia (Nov. 23, 2025)

Blocks

Season: 4 at SMU (Jan. 4, 2026)
Career: 4 (2x), last: at SMU (Jan. 4, 2026)

Turnovers

Season: 4 at Georgia (Nov. 23, 2025)
Career: 7 (Four times)*

Minutes

Season: 26 vs. Charleston So. (Nov. 13, 2025)
Career: 32 vs. CSUN (Jan. 23, 2025)*

Miscellaneous

	Career	25-26
Double-Doubles:	5	-
Double Figure Points:	29	4
Double Figure Rebounds:	6	-
20+ Points:	2	-

*Set at Long Beach State

2025-26 GAME-BY-GAME

#12 CRAWSHAW, Jada

Opponent	Date	GS	MIN	Total		3-Pointers		Free throws		Rebounds			PF	A	TO	BLK	STL	PTS	AVG	
				FG-FA	PCT	3FG-3FGA	PCT	FT-FTA	PCT	OFF	DEF	TOT								AVG
Radford	11/06/2025		11:02	4-4	1.000	0-0	.000	1-2	.500	1	2	3	3.0	2	0	1	0	9	9.0	
Princeton	11/09/2025		10:51	2-2	1.000	0-0	.000	0-0	.000	0	1	1	2.0	0	2	0	1	0	4	6.5
Charleston So.	11/13/2025		26:54	4-8	.500	0-0	.000	2-4	.500	1	7	8	4.0	2	1	0	0	2	10	7.7
Jacksonville	11/16/2025		13:36	2-7	.286	0-1	.000	2-4	.500	0	1	1	3.3	3	0	2	0	0	6	7.3
West Ga.	11/19/2025		20:01	5-7	.714	0-0	.000	1-4	.250	4	4	8	4.2	2	1	2	2	1	11	8.0
at Georgia	11/23/2025		22:24	3-6	.500	1-2	.500	3-4	.750	1	5	6	4.5	4	0	4	1	4	10	8.3
at West Virginia	12/11/2025		20:52	2-5	.400	0-0	.000	2-4	.500	3	1	4	4.4	1	2	3	0	1	6	8.0
at Wake Forest	12/14/2025		13:59	1-5	.200	0-0	.000	1-2	.500	0	2	2	4.1	2	0	0	0	0	3	7.4
at NC State	12/18/2025		09:27	0-1	.000	0-0	.000	0-0	.000	0	1	1	3.8	0	0	2	0	0	0	6.6
Wofford	12/28/2025		16:09	6-11	.545	0-0	.000	2-4	.500	2	4	6	4.0	1	1	2	0	2	14	7.3
Notre Dame	01/01/2026		07:06	1-2	.500	0-0	.000	1-1	1.000	1	1	2	3.8	3	0	2	0	0	3	6.9
at SMU	01/04/2026		20:39	4-6	.667	0-0	.000	1-2	.500	2	3	5	3.9	2	0	1	4	2	9	7.1
Virginia	01/08/2026		12:36	3-9	.333	0-0	.000	1-1	1.000	3	2	5	4.0	5	1	0	0	1	7	7.1
Totals		0	205:36	37-73	.507	1-3	.333	17-32	.531	18	34	52	4.0	27	8	19	8	13	92	7.1

Player Averages

Games Played	Minutes/game	Points/game	FG Pct	3FG Pct	FT Pct	Rebounds/game	Assists/game	Turnovers/game	Assist/Turnover ratio	Steals/game	Blocks/game
13	15.8	7.1	50.7	33.3	53.1	4.0	0.6	1.5	0.4	1.0	0.6

CRAWSHAW CAREER STATISTICS

CRAWSHAW, Jada

				Field Goals		3-Point		F-Throws		Rebounds							Scoring			
SEASON	TEAM	GP-GS	MIN/AVG	FG-FGA	FG%	3FG-3FGA	3FG%	FT-FTA	FT%	OFF	DEF	TOT	AVG	PF-FO	A	TO	BLK	STL	PTS	AVG
2023-24	LBSU	33-0	600/18.2	82-208	.394	7-33	.212	50-77	.649	61	107	168	5.1	87-1	18	108	26	32	221	6.7
2024-25	LBSU	29-13	617/21.3	120-296	.405	16-46	.348	45-77	.584	47	93	140	4.8	87-3	46	105	24	27	301	10.4
2025-26	GaTech	13-0	206/15.8	37-73	.507	1-3	.333	17-32	.531	18	34	52	4.0	27-1	8	19	8	13	92	7.1
TOTAL FOR GaTech		13-0	206/15.8	37-73	.507	1-3	.333	17-32	.531	18	34	52	4.0	27-1	8	19	8	13	92	7.1
TOTAL		75-13	1423/19.0	239-577	.414	24-82	.293	112-186	.602	126	234	360	4.8	201-5	72	232	58	72	614	8.2



#13 DÉBORAH MUKEBA

Sophomore • 6-5 • Center • Fleurus, Belgium • Boston College/Winston-Salem Christian School • Major: Psychology

THE MUKEBA FILE

THIS SEASON:

LAST FIVE GAMES:

KEY SEASON AVERAGES

Points Rebounds Assists
-- -- --

CAREER & SEASON HIGHS

Points

Season:

Career: 3 vs. Northeastern (Nov. 11, 2024)*

Field Goals

Season:

Career: 1 (2x), last: vs. Northeastern (Nov. 11, 2024)*

Field Goals Attempted

Season:

Career: 2 vs. Lafayette (Nov. 4, 2024)

3- Point Field Goals

Season:

Career:

3- Point Field Goals Attempted

Season:

Career:

Free Throws

Season:

Career: 1 vs. Northeastern (Nov. 11, 2024)*

Free Throws Attempted

Season:

Career: 3 vs. Northeastern (Nov. 11, 2024)*

Rebounds

Season:

Career: 4 vs. Lafayette (Nov. 4, 2024)*

Assists

Season:

Career:

Steals

Season:

Career:

Blocks

Season:

Career:

Turnovers

Season:

Career: 1 vs. Northeastern (Nov. 11, 2024)*

Minutes

Season:

Career: 4 (2x), last: vs. Northeastern (Nov. 11, 2024)*

Miscellaneous

	Career	25-26
Double-Doubles:	-	-
Double Figure Points:	-	-
Double Figure Rebounds:	-	-
20+ Points:	-	-

*Set at Boston College

2025-26 GAME-BY-GAME

MUKEBA CAREER STATISTICS

MUKEBA, Deborah

				Field Goals		3-Point		F-Throws		Rebounds								Scoring		
SEASON	TEAM	GP-GS	MIN/AVG	FG-FGA	FG%	3FG-3FGA	3FG%	FT-FTA	FT%	OFF	DEF	TOT	AVG	PF-FO	A	TO	BLK	STL	PTS	AVG
2024-25	BC	3-0	12/3.9	2-4	.500	0-0	.000	1-5	.200	4	2	6	2.0	0-0	0	1	0	0	5	1.7
TOTAL FOR GaTech		0-0	0/0.0	0-0	.000	0-0	.000	0-0	.000	0	0	0	0.0	0-0	0	0	0	0	0	0.0
TOTAL		3-0	12/3.9	2-4	.500	0-0	.000	1-5	.200	4	2	6	2.0	0-0	0	1	0	0	5	1.7



#20 ARIADNA TERMIS

Junior • 6-6 • Center • Zaragoza, Spain • IES Joaquim Blume Barcelona • Major: Biomedical Engineering

THE TERMIS FILE

THIS SEASON:

- Had six rebounds vs. Florida (Nov. 29)
- Scored six points against St. John's (Nov. 28)
- Eclipsed 200 career points with an eight-point morning in the season opener against Radford (Nov. 6).
- Shot 50% from the floor and was 2-for-2 from the free throw line vs. Radford (Nov. 6)
- 41 career starts at Georgia Tech

LAST FIVE GAMES:

- 3.0 PPG
- 2.2 RPG
- 43.8% FG (7-for-16)
- 8 assists
- 4 blocks
- 2 steals

KEY SEASON AVERAGES

Points Rebounds Assists
3.4 3.1 2.0

CAREER & SEASON HIGHS

Points

Season: 8 vs. Radford (Nov. 6, 2025)
Career: 13 vs. Oregon (Nov. 25, 2024)

Field Goals

Season: 3 (2x), last: vs. St. John's (Nov. 28, 2025)
Career: 5 (3x) last vs. Oregon (Nov. 25, 2024)

Field Goals Attempted

Season: 10 vs. Jacksonville (Nov. 16, 2025)
Career: 12 vs. Georgia (Nov. 17, 2024)

3- Point Field Goals

Season: 2 vs. Jacksonville (Nov. 16, 2025)
Career: 3, 2x, last vs. Oregon (11/25/24)

3- Point Field Goals Attempted

Season: 6 vs. Jacksonville (Nov. 16, 2025)
Career: 7 vs. Georgia (Nov. 17, 2024)

Free Throws

Season: 2 (3x), last: vs. Norfolk St. (Dec. 8, 2025)
Career: 2 (Five times)

Free Throws Attempted

Season: 2 (3x), last: vs. Norfolk St. (Dec. 8, 2025)
Career: 2 (Eight times)

Rebounds

Season: 7 (2x), last: vs. Princeton (Nov. 9, 2025)
Career: 11 vs. Georgia State (Nov. 8, 2024)

Assists

Season: 5 vs. Princeton (Nov. 9, 2025)
Career: 7 vs. Louisiana Monroe (Dec. 11, 2024)

Steals

Season: 2 vs. Jacksonville (Nov. 16, 2025)
Career: 2 (3x), last: vs. JU (Nov. 16, 2025)

Blocks

Season: 2 (Four times)
Career: 2 (Six times)

Turnovers

Season: 5 vs. Notre Dame (Jan. 1, 2026)
Career: 5 vs. Notre Dame (Jan. 1, 2026)

Minutes

Season: 32 vs. Florida (Nov. 29, 2025)
Career: 33 vs. Virginia Tech (Jan. 9, 2025)

Miscellaneous

	Career	25-26
Double-Doubles:	-	-
Double Figure Points:	6	-
Double Figure Rebounds:	1	-
20+ Points:	-	-

2025-26 GAME-BY-GAME

#20 TERMIS, Ariadna

Opponent	Date	GS	MIN	Total		3-Pointers		Free throws		Rebounds				PF	A	TO	BLK	STL	PTS	AVG
				FG-FGA	PCT	3FG-3FGA	PCT	FT-FTA	PCT	OFF	DEF	TOT	AVG							
Radford	11/06/2025	*	21:04	3-6	.500	0-2	.000	2-2	1.000	2	5	7	7.0	1	3	1	0	0	8	8.0
Princeton	11/09/2025	*	28:50	1-4	.250	0-2	.000	0-0	.000	1	6	7	7.0	1	5	3	2	0	2	5.0
Charleston So.	11/13/2025	*	14:29	1-4	.250	0-3	.000	0-0	.000	0	1	1	5.0	0	3	1	2	0	2	4.0
Jacksonville	11/16/2025	*	22:27	2-10	.200	2-6	.333	0-0	.000	0	2	2	4.3	1	4	2	2	2	6	4.5
West Ga.	11/19/2025	*	07:18	0-3	.000	0-0	.000	0-0	.000	1	1	2	3.8	1	1	0	0	0	0	3.6
at Georgia	11/23/2025	*	24:55	1-2	.500	1-2	.500	0-0	.000	0	3	3	3.7	2	0	0	2	1	3	3.5
vs St. John's (NY)	11/28/2025	*	24:34	3-4	.750	0-0	.000	0-0	.000	0	2	2	3.4	3	0	2	0	1	6	3.9
vs Florida	11/29/2025	*	32:42	1-6	.167	0-4	.000	2-2	1.000	1	5	6	3.8	0	3	2	1	0	4	3.9
at Texas A&M	12/03/2025	*	17:57	2-6	.333	1-4	.250	0-0	.000	0	1	1	3.4	0	3	1	0	1	5	4.0
Norfolk St.	12/08/2025	*	20:41	0-4	.000	0-4	.000	2-2	1.000	1	4	5	3.6	0	3	1	1	0	2	3.8
at West Virginia	12/11/2025	*	31:43	1-1	1.000	0-0	.000	0-0	.000	1	2	3	3.5	1	1	1	0	0	2	3.6
at Wake Forest	12/14/2025	*	23:51	1-4	.250	0-2	.000	0-0	.000	0	3	3	3.5	0	0	0	1	0	2	3.5
at NC State	12/18/2025	*	24:15	2-6	.333	1-4	.250	0-0	.000	0	2	2	3.4	1	3	1	1	0	5	3.6
Wofford	12/28/2025	*	27:12	1-2	.500	0-0	.000	0-0	.000	1	3	4	3.4	2	4	3	1	1	2	3.5
Notre Dame	01/01/2026	*	24:59	2-3	.667	0-1	.000	0-0	.000	0	3	3	3.4	3	1	5	0	0	4	3.5
at SMU	01/04/2026	*	20:02	1-3	.333	0-2	.000	0-0	.000	0	2	2	3.3	0	0	1	1	0	2	3.4
Virginia	01/08/2026	*	14:13	1-2	.500	0-1	.000	0-0	.000	0	0	0	3.1	3	0	1	1	1	2	3.4
Totals			17 381:12	23-70	.329	5-37	.135	6-6	1.000	8	45	53	3.1	19	34	25	15	7	57	3.4

Player Averages

Games Played	Minutes/ game	Points/ game	FG Pct	3FG Pct	FT Pct	Rebounds/ game	Assists/ game	Turnovers/ game	Assist/Turnover ratio	Steals/ game	Blocks/ game
17	22.4	3.4	32.9	13.5	100.0	3.1	2.0	1.5	1.4	0.4	0.9

TERMIS CAREER STATISTICS

TERMIS, Ariadna

		Field Goals				3-Point		F-Throws		Rebounds				Scoring						
SEASON	TEAM	GP-GS	MIN/AVG	FG-FGA	FG%	3FG-3FGA	3FG%	FT-FTA	FT%	OFF	DEF	TOT	AVG	PF-FO	A	TO	BLK	STL	PTS	AVG
2023-24	GaTech	25-0	262/10.5	26-55	.473	10-25	.400	3-4	.750	8	30	38	1.5	25-0	16	12	3	3	65	2.6
2024-25	GaTech	32-24	649/20.3	52-122	.426	20-66	.303	3-8	.375	24	92	116	3.6	35-0	62	26	16	12	127	4.0
2025-26	GaTech	17-17	381/22.4	23-70	.329	5-37	.135	6-6	1.000	8	45	53	3.1	19-0	34	25	15	7	57	3.4
TOTAL		74-41	1292/17.5	101-247	.409	35-128	.273	12-18	.667	40	167	207	2.8	79-0	112	63	34	22	249	3.4



#21 TALAYAH WALKER

Sophomore • 5-10 • Guard • Odenton, Md. • Penn State/Our Lady of Good Counsel • Major: Business Administration

THE WALKER FILE

THIS SEASON:

- Named ACC Player of the Week on Jan. 5
- AP Honorable Mention Player of the Week - Jan. 6
- Back-to-back 30-point games and double-doubles; first Jacket since 1995 to score 30 in back-to-back games
- Five-straight 20-point games; leads ACC in 20-point games in conference play (4)

LAST FIVE GAMES:

- 25.2 PPG - team-high
- 8.2 RPG
- 48.1% FG (38-for-79)
- 13 assists
- 3 blocks
- 10 steals - tied team-high
- 50.0% 3PT (10-for-20)

KEY SEASON AVERAGES

Points	Rebounds	Field Goal
16.5	6.3	46.5

CAREER & SEASON HIGHS

Points

Season: 33 vs. Notre Dame (Jan. 1, 2026)

Career: 33 vs. Notre Dame (Jan. 1, 2026)

Field Goals

Season: 10 vs. Notre Dame (Jan. 1, 2026)

Career: 10 vs. Notre Dame (Jan. 1, 2026)

Field Goals Attempted

Season: 23 vs. Virginia (Jan. 8, 2026)

Career: 23 vs. Virginia (Jan. 8, 2026)

3- Point Field Goals

Season: 4 at NC State (Dec. 18, 2025)

Career: 4 at NC State (Dec. 18, 2025)

3- Point Field Goals Attempted

Season: 7 at NC State (Dec. 18, 2025)

Career: 7 at NC State (Dec. 18, 2025)

Free Throws

Season: 12 vs. Notre Dame (Jan. 1, 2026)

Career: 12 vs. Notre Dame (Jan. 1, 2026)

Free Throws Attempted

Season: 14 (2x), last: vs. Notre Dame (Jan. 1, 2026)

Career: 14 (2x), last: vs. Notre Dame (Jan. 1, 2026)

Rebounds

Season: 13 vs. Norfolk State (Dec. 8, 2025)

Career: 13 vs. Norfolk State (Dec. 8, 2025)

Assists

Season: 6 vs. Notre Dame (Jan. 1, 2026)

Career: 6 vs. Notre Dame (Jan. 1, 2026)

Steals

Season: 7 at SMU (Jan. 4, 2026)

Career: 7 at SMU (Jan. 4, 2026)

Blocks

Season: 2 at SMU (Jan. 4, 2026)

Career: 2 (2x), last: at SMU (Jan. 4, 2026)

Turnovers

Season: 6 at West Virginia (Dec. 11, 2025)

Career: 6 at West Virginia (Dec. 11, 2025)

Minutes

Season: 40 (2x), last: vs. Virginia (Jan. 8, 2026)

Career: 40 (2x), last: vs. Virginia (Jan. 8, 2026)

Miscellaneous

	Career	25-26
Double-Doubles:	3	3
Double Figure Points:	20	13
Double Figure Rebounds:	3	3
20+ Points:	6	6

*Set at Penn State

2025-26 GAME-BY-GAME

#21 WALKER, Talayah

Opponent	Date	GS	MIN	Total		3-Pointers		Free throws		Rebounds			PF	A	TO	BLK	STL	PTS	AVG		
				FG-FA	PCT	3FG-3FGA	PCT	FT-FTA	PCT	OFF	DEF	TOT								AVG	
Radford	11/06/2025	*	19:49	5-9	.556	0-1	.000	6-9	.667	3	4	7	7.0	3	2	3	0	1	16	16.0	
Princeton	11/09/2025	*	26:38	3-6	.500	0-1	.000	3-4	.750	1	2	3	5.0	4	2	5	0	0	9	12.5	
Charleston So.	11/13/2025	*	24:16	7-10	.700	3-4	.750	2-2	1.000	2	3	5	5.0	0	3	0	0	5	19	14.7	
Jacksonville	11/16/2025	*	26:00	6-10	.600	0-0	.000	3-7	.429	2	3	5	5.0	5	1	1	0	2	15	14.8	
West Ga.	11/19/2025	*	33:56	3-7	.429	1-1	1.000	2-4	.500	1	3	4	4.8	1	2	2	0	3	9	13.6	
at Georgia	11/23/2025	*	21:43	2-8	.250	0-0	.000	0-0	.000	1	2	3	4.5	2	1	2	0	0	4	12.0	
vs St. John's (NY)	11/28/2025	*	32:43	4-9	.444	0-0	.000	10-14	.714	3	1	4	4.4	4	2	1	0	2	18	12.9	
vs Florida	11/29/2025	*	27:40	5-18	.278	0-1	.000	1-1	1.000	4	3	7	4.8	2	1	4	0	0	11	12.6	
at Texas A&M	12/03/2025	*	29:24	7-17	.412	1-1	1.000	2-3	.667	2	5	7	5.0	4	0	2	1	1	17	13.1	
Norfolk St.	12/08/2025	*	40:00	8-12	.667	1-2	.500	3-3	1.000	4	9	13	5.8	0	5	2	0	3	20	13.8	
at West Virginia	12/11/2025	*	19:06	0-4	.000	0-0	.000	4-4	1.000	3	0	3	5.5	1	0	6	0	0	4	12.9	
at Wake Forest	12/14/2025	*	27:01	6-13	.462	1-2	.500	0-0	.000	3	2	5	5.5	0	1	2	0	1	13	12.9	
at NC State	12/18/2025	*	34:42	6-12	.500	4-7	.571	4-4	1.000	0	5	5	5.5	0	1	2	0	0	20	13.5	
Wofford	12/28/2025	*	30:19	9-14	.643	2-4	.500	2-2	1.000	2	5	7	5.6	4	3	2	0	0	22	14.1	
Notre Dame	01/01/2026	*	31:40	10-17	.588	1-1	1.000	12-14	.857	6	4	10	5.9	3	6	2	1	1	33	15.3	
at SMU	01/04/2026	*	36:19	9-13	.692	1-2	.500	11-12	.917	2	9	11	6.2	3	2	3	2	7	30	16.3	
Virginia	01/08/2026	*	40:00	4-23	.174	2-6	.333	11-12	.917	5	3	8	6.3	1	1	2	0	2	21	16.5	
Totals			17	501:15	94-202	.465	17-33	.515	76-95	.800	44	63	107	6.3	37	33	41	4	28	281	16.5

Player Averages

Games Played	Minutes/ game	Points/ game	FG Pct	3FG Pct	FT Pct	Rebounds/ game	Assists/ game	Turnovers/ game	Assist/Turnover ratio	Steals/ game	Blocks/ game
17	29.5	16.5	46.5	51.5	80.0	6.3	1.9	2.4	0.8	1.6	0.2

WALKER CAREER STATISTICS

WALKER, Talayah

SEASON	TEAM	GP-GS	MIN/AVG	FG-FGA	FG%	3FG-3FGA	3FG%	FT-FTA	FT%	OFF	DEF	TOT	AVG	PF-FO	A	TO	BLK	STL	PTS	AVG
2024-25	PSU	29-2	448/15.4	58-130	.446	4-16	.250	42-54	.778	33	63	96	3.3	35-0	24	36	8	25	162	5.6
2025-26	GaTech	17-17	501/29.5	94-202	.465	17-33	.515	76-95	.800	44	63	107	6.3	37-1	33	41	4	28	281	16.5
TOTAL FOR GaTech		17-17	501/29.5	94-202	.465	17-33	.515	76-95	.800	44	63	107	6.3	37-1	33	41	4	28	281	16.5
TOTAL		46-19	949/20.6	152-332	.458	21-49	.429	118-149	.792	77	126	203	4.4	72-1	57	77	12	53	443	9.6



#22 INÉS NOGUERO

Senior • 5-9 • Guard • Gijón, Spain • IES Joaquim Blume • Major: Neuroscience

THE NOGUERO FILE

THIS SEASON:

- Led Tech with 10 rebounds on Nov. 16 vs. Jacksonville
- Second on team with 13 points vs. Princeton (Nov. 9) with seven boards
- Started off strong against Radford (Nov. 6) with nine points and five boards on top of 2-for-2 from the free throw line
- Added three assists and one made trey to her ledger vs. Radford
- Made 63rd career start vs. JU; 82nd game played

LAST FIVE GAMES:

- Nov. 16 vs. JU: 10 rebounds, 6 points, 2 assists, 2 blocks
- Nov. 13 vs. CSU: 5 points (2-for-4 FG), 1 block, 1 steal, 1 assist
- Nov. 9 vs. Princeton: 13 points (6-for-9 FG) and 7 rebounds
- Nov. 6 vs. Radford: 9 points, 5 rebounds and 3-for-5 shooting

KEY SEASON AVERAGES

Points	Rebounds	Assists
8.3	5.5	2.0

CAREER & SEASON HIGHS

Points

Season: 13 vs. Princeton (Nov. 9, 2025)
Career: 16 (2x), last: at Rice (Nov. 16, 2023)

Field Goals

Season: 6 vs. Princeton (Nov. 9, 2025)
Career: 6 (4x), last: vs. Princeton (Nov. 9, 2025)

Field Goals Attempted

Season: 9 vs. Princeton (Nov. 9, 2025)
Career: 14 vs. New Mexico (Nov. 24, 2023)

3- Point Field Goals

Season: 1 (3x), last: vs. CSU (Nov. 13, 2025)
Career: 4 vs. Florida State (Jan. 1, 2023)

3- Point Field Goals Attempted

Season: 2 vs. Charleston So. (Nov. 13, 2025)
Career: 9 (2x), last: vs. Notre Dame (Feb. 1, 2024)

Free Throws

Season: 2 vs. Radford (Nov. 6, 2025)
Career: 6 at Rice (Nov. 16, 2023)

Free Throws Attempted

Season: 2 vs. Radford (Nov. 6, 2025)
Career: 7 at Rice (Nov. 16, 2023)

Rebounds

Season: 10 vs. Jacksonville (Nov. 16, 2025)
Career: 12 vs. Mercer (Dec. 5, 2023)

Assists

Season: 3 vs. Radford (Nov. 6, 2025)
Career: 7 vs. Oregon (Nov. 25, 2024)

Steals

Season: 1 (2x), last: vs. CSU (Nov. 13, 2025)
Career: 5 at Rice (Nov. 16, 2023)

Blocks

Season: 2 vs. Jacksonville (Nov. 16, 2025)
Career: 2 (2x), last: vs. JU (Nov. 16, 2025)

Turnovers

Season: 5 vs. Princeton (Nov. 9, 2025)
Career: 5 (2x), last: vs. Princeton (Nov. 9, 2025)

Minutes

Season: 31 vs. Princeton (Nov. 9, 2025)
Career: 40 at NC State (Feb. 18, 2024)

Miscellaneous

	Career	25-26
Double-Doubles:	2	-
Double Figure Points:	15	1
Double Figure Rebounds:	3	1
20+ Points:	-	-

2025-26 GAME-BY-GAME

#22 NOGUERO, Ines

Opponent	Date	GS	MIN	Total		3-Pointers		Free throws		Rebounds				PF	A	TO	BLK	STL	PTS	AVG
				FG-FGA	PCT	3FG-3FGA	PCT	FT-FTA	PCT	OFF	DEF	TOT	AVG							
Radford	11/06/2025	*	22:44	3-5	.600	1-1	1.000	2-2	1.000	0	5	5	5.0	1	3	0	0	9	9.0	
Princeton	11/09/2025	*	31:19	6-9	.667	1-1	1.000	0-0	.000	1	6	7	6.0	2	2	5	1	13	11.0	
Charleston So.	11/13/2025	*	14:38	2-4	.500	1-2	.500	0-0	.000	0	0	0	4.0	1	1	0	1	5	9.0	
Jacksonville	11/16/2025	*	27:35	3-7	.429	0-1	.000	0-0	.000	1	9	10	5.5	4	2	2	0	6	8.3	
Totals			4 96:16	14-25	.560	3-5	.600	2-2	1.000	2	20	22	5.5	8	8	7	4	33	8.3	

Player Averages

Games Played	Minutes/game	Points/game	FG Pct	3FG Pct	FT Pct	Rebounds/game	Assists/game	Turnovers/game	Assist/Turnover ratio	Steals/game	Blocks/game
4	24.1	8.3	56.0	60.0	100.0	5.5	2.0	1.8	1.1	0.5	1.0

NOGUERO CAREER STATISTICS

NOGUERO, Ines

		Field Goals					3-Point		F-Throws		Rebounds												Scoring	
SEASON	TEAM	GP-GS	MIN/AVG	FG-FGA	FG%	3FG-3FGA	3FG%	FT-FTA	FT%	OFF	DEF	TOT	AVG	PF-FO	A	TO	BLK	STL	PTS	AVG				
2022-23	GaTech	19-6	209/11.0	26-79	.329	13-44	.295	3-4	.750	11	18	29	1.5	15-0	14	16	3	14	68	3.6				
2023-24	GaTech	32-32	939/29.3	76-218	.349	30-122	.246	22-31	.710	15	144	159	5.0	78-1	70	59	4	40	204	6.4				
2024-25	GaTech	27-21	424/15.7	48-113	.425	16-64	.250	9-12	.750	8	60	68	2.5	33-0	53	33	12	39	121	4.5				
2025-26	GaTech	4-4	96/24.1	14-25	.560	3-5	.600	2-2	1.000	2	20	22	5.5	8-0	8	7	4	2	33	8.3				
TOTAL		82-63	1667/20.3	164-435	.377	62-235	.264	36-49	.735	36	242	278	3.4	134-1	145	115	23	95	426	5.2				



#23 LA'NYA FOSTER

Junior • 5-10 • Guard • Snellville, Ga. • Austin Peay/Lovejoy HS • Major: History, Technology & Society

THE FOSTER FILE

THIS SEASON:

- 22 points in win over No. 18 Notre Dame; 9-for-15 FG
- 15 points and five boards in 35 minutes at Wofford (Dec. 28).
- Started at NC State (Dec. 18) and led Tech with eight rebounds
- Made first start at Tech on Dec. 8 vs. NSU (second on team w/ 8 reb.)
- Season-high 11 points vs. West Georgia (Nov. 19)
- Added four rebounds and three assists in 19 minutes of action against the Bucs

LAST FIVE GAMES:

- 10.8 PPG
- 5.4 RPG
- 39.3% FG (22-for-56)
- 11 assists
- 3 steals

KEY SEASON AVERAGES

Points Rebounds Free Throw
6.6 **3.6** **93.3**

CAREER & SEASON HIGHS

Points

Season: 22 vs. Notre Dame, Jan. 1, 2026
Career: 24 (3x), last: vs. Kennesaw State (March 8, 2024)*

Field Goals

Season: 9 vs. Notre Dame, Jan. 1, 2026
Career: 11 at High Point (Dec. 21, 2024)*

Field Goals Attempted

Season: 16 at SMU (Jan. 4, 2026)
Career: 19 vs. Manhattan (Nov. 30, 2024)*

3- Point Field Goals

Season: 3 vs. Wofford (Dec. 28, 2025)
Career: 3 (Four times)

3- Point Field Goals Attempted

Season: 6 vs. Wofford (Dec. 28, 2025)
Career: 7 (2x), last: at Miami-OH (Nov. 17, 2024)*

Free Throws

Season: 4 vs. Notre Dame, Jan. 1, 2026
Career: 6 vs. Kennesaw State (March 8, 2024)*

Free Throws Attempted

Season: 5 vs. Notre Dame, Jan. 1, 2026
Career: 8 vs. Kennesaw State (March 8, 2024)*

Rebounds

Season: 8 (3x), last: at SMU (Jan. 4, 2026)
Career: 11 (3x), last: vs. Queens (Feb. 20, 2025)*

Assists

Season: 3 (Seven times)
Career: 10 at Eastern Kentucky (Jan. 16, 2025)*

Steals

Season: 2 (3x), last: vs. Notre Dame (Jan. 1, 2026)
Career: 7 at High Point (Dec. 21, 2024)*

Blocks

Season: 1 (3x), last: at WVU (Dec. 11, 2025)
Career: 4 (3x), last: at FGCU (March 8, 2025)*

Turnovers

Season: 4 vs. West Georgia (Nov. 19, 2025)
Career: 7 (3x), last: vs. North Florida (Jan. 4, 2025)*

Minutes

Season: 41 vs. Notre Dame, Jan. 1, 2026
Career: 42 at Eastern Kentucky (Jan. 16, 2025)*

Miscellaneous

	Career	25-26
Double-Doubles:	4	-
Double Figure Points:	37	4
Double Figure Rebounds:	7	-
20+ Points:	4	-

*Set at Austin Peay

2025-26 GAME-BY-GAME

#23 FOSTER, La'Nya

Opponent	Date	GS	MIN	Total		3-Pointers		Free throws		Rebounds				PF	A	TO	BLK	STL	PTS	AVG	
				FG-FGA	PCT	3FG-3FGA	PCT	FT-FTA	PCT	OFF	DEF	TOT	AVG								
Radford	11/06/2025		14:40	1-4	.250	0-2	.000	0-0	.000	0	0	0	0.0	3	1	1	0	0	2	2.0	
Charleston So.	11/13/2025		19:40	4-9	.444	2-4	.500	0-0	.000	2	2	4	2.0	0	3	0	0	0	10	6.0	
Jacksonville	11/16/2025		03:38	0-2	.000	0-0	.000	0-0	.000	1	0	1	1.7	4	0	2	0	0	0	4.0	
West Ga.	11/19/2025		16:56	4-6	.667	1-2	.500	2-2	1.000	0	1	1	1.5	0	3	4	0	2	11	5.8	
at Georgia	11/23/2025		16:02	2-7	.286	0-1	.000	2-2	1.000	2	3	5	2.2	1	0	2	0	0	6	5.8	
vs St. John's (NY)	11/28/2025		26:50	3-11	.273	0-4	.000	0-0	.000	0	5	5	2.7	3	2	0	0	2	6	5.8	
vs Florida	11/29/2025		13:54	1-5	.200	0-0	.000	0-0	.000	0	0	0	2.3	2	1	1	0	0	2	5.3	
at Texas A&M	12/03/2025		19:50	2-6	.333	1-3	.333	0-0	.000	0	1	1	2.1	3	1	3	1	1	5	5.3	
Norfolk St.	12/08/2025	*	34:58	0-5	.000	0-2	.000	0-0	.000	1	7	8	2.8	1	3	1	0	1	0	4.7	
at West Virginia	12/11/2025		25:01	1-3	.333	0-0	.000	2-2	1.000	1	3	4	2.9	2	3	3	1	1	4	4.6	
at Wake Forest	12/14/2025		16:19	1-4	.250	1-3	.333	2-2	1.000	0	2	2	2.8	0	0	2	0	2	5	4.6	
at NC State	12/18/2025	*	32:03	2-9	.222	1-2	.500	0-0	.000	3	5	8	3.3	2	3	1	0	0	5	4.7	
Wofford	12/28/2025	*	35:07	6-13	.462	3-6	.500	0-0	.000	0	5	5	3.4	0	3	0	0	0	15	5.5	
Notre Dame	01/01/2026	*	41:06	9-15	.600	0-5	.000	4-5	.800	0	4	4	3.4	2	2	2	0	2	22	6.6	
at SMU	01/04/2026	*	27:19	4-16	.250	0-3	.000	0-0	.000	6	2	8	3.7	0	3	2	0	1	8	6.7	
Virginia	01/08/2026	*	15:07	1-3	.333	0-2	.000	2-2	1.000	1	1	2	3.6	1	0	2	0	0	4	6.6	
Totals			6	358:30	41-118	.347	9-39	.231	14-15	.933	17	41	58	3.6	24	28	26	2	12	105	6.6

Player Averages

Games Played	Minutes/ game	Points/ game	FG Pct	3FG Pct	FT Pct	Rebounds/ game	Assists/ game	Turnovers/ game	Assist/Turnover ratio	Steals/ game	Blocks/ game
16	22.4	6.6	34.7	23.1	93.3	3.6	1.8	1.6	1.1	0.8	0.1

FOSTER CAREER STATISTICS

FOSTER, La'nya

SEASON	TEAM	GP-GS	MIN/AVG	Field Goals		3-Point		F-Throws		Rebounds				Scoring						
				FG-FGA	FG%	3FG-3FGA	3FG%	FT-FTA	FT%	OFF	DEF	TOT	AVG	PF-FO	A	TO	BLK	STL	PTS	AVG
2023-24	APSU	33-16	784/23.7	110-269	.409	17-60	.283	49-70	.700	42	135	177	5.4	68-1	31	60	23	25	286	8.7
2024-25	APSU	31-31	997/32.2	159-390	.408	22-85	.259	30-52	.577	34	181	215	6.9	85-3	70	86	39	44	370	11.9
2025-26	GaTech	16-6	359/22.4	41-118	.347	9-39	.231	14-15	.933	17	41	58	3.6	24-0	28	26	2	12	105	6.6
TOTAL FOR GaTech		16-6	359/22.4	41-118	.347	9-39	.231	14-15	.933	17	41	58	3.6	24-0	28	26	2	12	105	6.6
TOTAL		80-53	2139/26.7	310-777	.399	48-184	.261	93-137	.679	93	357	450	5.6	177-4	129	172	64	81	761	9.5



#32 D'ASIA THOMAS-HARRIS

Sophomore • 6-1 • Guard/Forward • Katy, Texas • Houston Christian • Major: Business Administration

THE THOMAS-HARRIS FILE

THIS SEASON:

- Team-high 14 points versus West Virginia (Dec. 11)
- Scored 10 points in 72-57 win over Norfolk State (Dec. 8)
- Second double-double of career on Dec. 3 at Texas A&M (12 pts, 10 reb.)
- Made first 3PT on 3-for-5 3PT shooting day vs. the Red Storm (Nov. 28)
- Tallied five points and five rebounds in nine minutes of action vs. Princeton (Nov. 9)

LAST FIVE GAMES:

- Did not play 1/4 at SMU
- 2.6 PPG
- 2.0 RPG
- 23.8% FG (5-for-21)
- 2 assists
- 1 block
- 2 steals

KEY SEASON AVERAGES

Points Rebounds Free Throw
6.4 5.0 71.8

CAREER & SEASON HIGHS

Points

Season: 14 at West Virginia (Dec. 11, 2025)
Career: 15 (2x), last: vs. Georgia State (Dec. 10, 2023)

Field Goals

Season: 5 at West Virginia (Dec. 11, 2025)
Career: 6 vs. Georgia State (Dec. 10, 2023)

Field Goals Attempted

Season: 15 vs. West Georgia (Nov. 19, 2025)
Career: 15 vs. West Georgia (Nov. 19, 2025)

3- Point Field Goals

Season: 3 (2x), last: at Texas A&M (Dec. 3, 2025)
Career: 3 (2x), last: at Texas A&M (Dec. 3, 2025)

3- Point Field Goals Attempted

Season: 6 (3x), last: at NC State (Dec. 18, 2025)
Career: 6 (3x), last: at NC State (Dec. 18, 2025)

Free Throws

Season: 8 vs. Radford (Nov. 6, 2025)
Career: 8 (2x), last: vs. Radford (Nov. 6, 2025)

Free Throws Attempted

Season: 10 vs. Radford (Nov. 6, 2025)
Career: 10 vs. Radford (Nov. 6, 2025)

Rebounds

Season: 10 (2x), last: at Texas A&M (Dec. 3, 2025)
Career: 13 at Rice (Nov. 16, 2023)

Assists

Season: 2 vs. Charleston So. (Nov. 13, 2025)
Career: 3 vs. Furman (Nov. 11, 2023)

Steals

Season: 3 vs. West Georgia (Nov. 19, 2025)
Career: 3 vs. West Georgia (Nov. 19, 2025)

Blocks

Season: 2 (2x), last: at Texas A&M (Dec. 3, 2025)
Career: 2 (3x), last: at Texas A&M (Dec. 3, 2025)

Turnovers

Season: 3 (2x), last: vs. Wofford (Dec. 28, 2025)
Career: 3 (Four times)

Minutes

Season: 27 at Texas A&M (Dec. 3, 2025)
Career: 27 at Texas A&M (Dec. 3, 2025)

Miscellaneous

	Career	25-26
Double-Doubles:	2	1
Double Figure Points:	8	6
Double Figure Rebounds:	3	2
20+ Points:	-	-

2025-26 GAME-BY-GAME

#32 THOMAS-HARRIS, D'Asia

Opponent	Date	GS	MIN	Total		3-Pointers		Free throws		Rebounds				PF	A	TO	BLK	STL	PTS	AVG
				FG-FGA	PCT	3FG-3FGA	PCT	FT-FTA	PCT	OFF	DEF	TOT	AVG							
Radford	11/06/2025		20:45	1-6	.167	0-1	.000	8-10	.800	1	8	9	9.0	3	1	2	1	0	10	10.0
Princeton	11/09/2025		09:07	1-4	.250	0-0	.000	3-3	1.000	2	3	5	7.0	1	0	3	0	1	5	7.5
Charleston So.	11/13/2025		21:04	3-8	.375	0-2	.000	0-0	.000	2	8	10	8.0	1	2	1	0	1	6	7.0
Jacksonville	11/16/2025		15:47	4-9	.444	0-1	.000	0-0	.000	4	3	7	7.8	1	0	0	0	0	8	7.3
West Ga.	11/19/2025		24:42	4-15	.267	0-0	.000	3-4	.750	3	4	7	7.6	0	0	1	2	3	11	8.0
at Georgia	11/23/2025		11:53	0-5	.000	0-2	.000	3-4	.750	0	4	4	7.0	3	0	0	0	0	3	7.2
vs St. John's (NY)	11/28/2025		18:40	3-5	.600	3-5	.600	2-2	1.000	0	2	2	6.3	2	0	1	1	2	11	7.7
vs Florida	11/29/2025		20:27	0-7	.000	0-3	.000	0-0	.000	1	2	3	5.9	2	0	1	0	1	0	6.8
at Texas A&M	12/03/2025		27:29	4-9	.444	3-6	.500	1-4	.250	3	7	10	6.3	5	0	2	2	1	12	7.3
Norfolk St.	12/08/2025		16:39	3-8	.375	1-3	.333	3-3	1.000	1	6	7	6.4	3	0	2	1	0	10	7.6
at West Virginia	12/11/2025		15:40	5-9	.556	2-4	.500	2-5	.400	2	4	6	6.4	5	0	2	0	0	14	8.2
at Wake Forest	12/14/2025		16:09	2-5	.400	0-1	.000	3-4	.750	2	4	6	6.3	3	1	1	1	0	7	8.1
at NC State	12/18/2025		17:34	1-10	.100	0-6	.000	0-0	.000	0	2	2	6.0	2	1	1	0	1	2	7.6
Wofford	12/28/2025		04:39	1-3	.333	0-0	.000	0-0	.000	0	0	0	5.6	4	0	3	0	1	2	7.2
Notre Dame	01/01/2026		01:45	0-0	.000	0-0	.000	0-0	.000	0	0	0	5.2	0	0	0	0	0	0	6.7
Virginia	01/08/2026		09:02	1-3	.333	0-1	.000	0-0	.000	2	0	2	5.0	4	0	0	0	0	2	6.4
Totals			0 251:22	33-106	.311	9-35	.257	28-39	.718	23	57	80	5.0	39	5	20	8	11	103	6.4

Player Averages

Games Played	Minutes/game	Points/game	FG Pct	3FG Pct	FT Pct	Rebounds/game	Assists/game	Turnovers/game	Assist/Turnover ratio	Steals/game	Blocks/game
16	15.7	6.4	31.1	25.7	71.8	5.0	0.3	1.3	0.3	0.7	0.5

THOMAS-HARRIS CAREER STATISTICS

THOMAS-HARRIS, D'asia

SEASON	TEAM	GP-GS	MIN/AVG	Field Goals		3-Point		F-Throws		Rebounds				Scoring						
				FG-FGA	FG%	3FG-3FGA	3FG%	FT-FTA	FT%	OFF	DEF	TOT	AVG	PF-FO	A	TO	BLK	STL	PTS	AVG
2023-24	GaTech	28-0	218/7.8	28-56	.500	0-1	.000	22-35	.629	16	51	67	2.4	24-0	8	19	6	8	78	2.8
2024-25	GaTech	5-0	29/5.7	4-5	.800	0-0	.000	1-2	.500	1	5	6	1.2	6-0	2	2	1	2	9	1.8
2025-26	GaTech	16-0	251/15.7	33-106	.311	9-35	.257	28-39	.718	23	57	80	5.0	39-2	5	20	8	11	103	6.4
TOTAL		49-0	498/10.2	65-167	.389	9-36	.250	51-76	.671	40	113	153	3.1	69-2	15	41	15	21	190	3.9



#33 SAVANNAH SAMUEL

Fifth Year • 6-1 • Guard • Woodstock, Ga. • Boston College/St. Francis HS •

THE SAMUEL FILE

THIS SEASON:

- First-career double-double vs. Florida (14 pts, 10 reb.) on Nov. 29
- Tied for team-lead with 12 points on Nov. 23 at Georgia
- Made first start at Tech vs. UWG on Nov. 19 - team-high 15 points
- 13 points vs. Charleston So. (Nov. 13) on 5-for-10 shooting
- Had six points and two rebounds on Nov. 6 vs. Radford with a perfect 2-for-2 clip at the free throw line
- Team-high 117 career games played

LAST FIVE GAMES:

- 3.3 PPG
- 0.5 RPG
- 31.3% FG (5-for-16)
- 1 assist
- 1 block
- 2 steals

KEY SEASON AVERAGES

Points	Rebounds	Free Throw
8.7	2.4	81.1

CAREER & SEASON HIGHS

Points

Season: 15 vs. West Georgia (Nov. 19, 2025)
Career: 16 (2x), last: at Villanova (March 20, 2025)*

Field Goals

Season: 6 (2x), last: vs. Florida (Nov. 29, 2025)
Career: 6 (Five times)

Field Goals Attempted

Season: 13 vs. Norfolk State (Dec. 8, 2025)
Career: 14 at Syracuse (March 2, 2025)*

3- Point Field Goals

Season: 3 (2x), last: vs. UWG (Nov. 19, 2025)
Career: 3 (Four times)

3- Point Field Goals Attempted

Season: 5 (2x), last: at Wake Forest (Dec. 14, 2025)
Career: 6 vs. Central Conn. State (Dec. 20, 2024)*

Free Throws

Season: 7 at Georgia (Nov. 23, 2025)
Career: 7 at Georgia (Nov. 23, 2025)

Free Throws Attempted

Season: 9 at Georgia (Nov. 23, 2025)
Career: 9 at Georgia (Nov. 23, 2025)

Rebounds

Season: 10 vs. Florida (Nov. 29, 2025)
Career: 10 vs. Florida (Nov. 29, 2025)

Assists

Season: 2 (Five times)
Career: 6 vs. TCU (March 10, 2022)**

Steals

Season: 2 vs. Charleston So. (Nov. 13, 2025)
Career: 3 (Four times)*

Blocks

Season: 1 vs. Florida (Nov. 29, 2025)
Career: 3 vs. Oregon (Dec. 13, 2020)***

Turnovers

Season: 4 (2x), last: at Georgia (Nov. 23, 2025)
Career: 4 (3x), last: at Georgia (Nov. 23, 2025)

Minutes

Season: 34 vs. Florida (Nov. 29, 2025)
Career: 34 (2x), last: vs. Florida (Nov. 29, 2025)

Miscellaneous

	Career	25-26
Double-Doubles:	1	1
Double Figure Points:	22	8
Double Figure Rebounds:	1	1
20+ Points:	-	-

*Set at Boston College

**Set at West Virginia

***Set at Oregon State

2025-26 GAME-BY-GAME

#33 SAMUEL, Savannah

Opponent	Date	GS	MIN	Total		3-Pointers		Free throws		Rebounds			PF	A	TO	BLK	STL	PTS	AVG		
				FG-FGA	PCT	3FG-3FGA	PCT	FT-FTA	PCT	OFF	DEF	TOT								AVG	
Radford	11/06/2025		19:49	2-6	.333	0-4	.000	2-2	1.000	1	1	2	2.0	2	2	1	0	1	6	6.0	
Princeton	11/09/2025		23:10	1-4	.250	0-1	.000	2-2	1.000	0	0	0	1.0	2	0	4	0	0	4	5.0	
Charleston So.	11/13/2025		25:22	5-10	.500	3-5	.600	0-0	.000	0	2	2	1.3	0	1	0	0	2	13	7.7	
Jacksonville	11/16/2025		20:11	2-4	.500	0-1	.000	4-5	.800	1	2	3	1.8	2	0	2	0	1	8	7.8	
West Ga.	11/19/2025	*	28:55	6-9	.667	3-4	.750	0-0	.000	1	1	2	1.8	3	2	2	0	1	15	9.2	
at Georgia	11/23/2025	*	33:32	2-7	.286	1-3	.333	7-9	.778	2	1	3	2.0	2	1	4	0	0	12	9.7	
vs St. John's (NY)	11/28/2025	*	20:15	2-4	.500	0-1	.000	3-4	.750	0	1	1	1.9	1	1	2	0	1	7	9.3	
vs Florida	11/29/2025	*	34:21	6-11	.545	0-0	.000	2-4	.500	3	7	10	2.9	4	0	1	1	0	14	9.9	
at Texas A&M	12/03/2025	*	31:33	4-9	.444	0-3	.000	3-3	1.000	1	2	3	2.9	1	2	1	0	0	11	10.0	
Norfolk St.	12/08/2025	*	30:46	4-13	.308	1-4	.250	2-2	1.000	1	4	5	3.1	2	2	0	0	0	11	10.1	
at West Virginia	12/11/2025	*	27:45	5-11	.455	1-4	.250	2-2	1.000	0	1	1	2.9	3	0	3	0	0	13	10.4	
at Wake Forest	12/14/2025	*	26:40	5-11	.455	2-5	.400	0-0	.000	2	2	4	3.0	1	2	3	0	1	12	10.5	
at NC State	12/18/2025		16:30	2-5	.400	0-1	.000	0-0	.000	0	1	1	2.8	3	0	3	0	1	4	10.0	
Wofford	12/28/2025		06:57	1-4	.250	0-2	.000	3-4	.750	0	1	1	2.7	1	0	0	1	0	5	9.6	
at SMU	01/04/2026		08:01	1-2	.500	0-0	.000	0-0	.000	0	0	0	2.5	3	1	0	0	1	2	9.1	
Virginia	01/08/2026		09:57	1-5	.200	0-2	.000	0-0	.000	0	0	0	2.4	0	0	0	0	0	2	8.7	
Totals			8	363:44	49-115	.426	11-40	.275	30-37	.811	12	26	38	2.4	30	14	26	2	9	139	8.7

Player Averages

Games Played	Minutes/ game	Points/ game	FG Pct	3FG Pct	FT Pct	Rebounds/ game	Assists/ game	Turnovers/ game	Assist/Turnover ratio	Steals/ game	Blocks/ game
16	22.7	8.7	42.6	27.5	81.1	2.4	0.9	1.6	0.5	0.6	0.1

SAMUEL CAREER STATISTICS

SAMUEL, Savannah

			Field Goals			3-Point		F-Throws		Rebounds			Scoring								
SEASON	TEAM	GP-GS	MIN/AVG	FG-FGA	FG%	3FG-3FGA	3FG%	FT-FTA	FT%	OFF	DEF	TOT	AVG	PF-FO	A	TO	BLK	STL	PTS	AVG	
2020-21	OSU	19-0	216/11.4	22-67	.328	3-21	.143	18-29	.621	5	16	21	1.1	16-0	5	16	7	6	65	3.4	
2021-22	WVU	30-0	537/17.9	47-126	.373	11-45	.244	20-33	.606	22	24	46	1.5	36-0	29	21	9	19	125	4.2	
2022-23	WVU	24-0	352/14.7	29-92	.315	5-33	.152	31-39	.795	18	34	52	2.2	40-0	10	36	3	15	94	3.9	
2024-25	BC	28-4	553/19.7	61-162	.377	17-64	.266	38-50	.760	29	36	65	2.3	61-2	17	29	8	24	177	6.3	
2025-26	GaTech	15-8	354/23.6	48-110	.436	11-38	.289	30-37	.811	12	26	38	2.5	30-0	14	26	2	9	137	9.1	
TOTAL FOR GaTech			15-8	354/23.6	48-110	.436	11-38	.289	30-37	.811	12	26	38	2.5	30-0	14	26	2	9	137	9.1
TOTAL			116-12	2012/17.3	207-557	.372	47-201	.234	137-188	.729	86	136	222	1.9	183-2	75	128	29	73	598	5.2

TV/RADIO ROSTER

**#0 Brianna Turnage**

G • 6-1 • Sr.
Atlanta, Ga.
Florida State/Westlake HS
(Ga.)

**#1 McKayla Taylor**

C • 6-1 • Fr.
Atlanta, Ga.
Langston Hughes HS

**#3 Erica Moon**

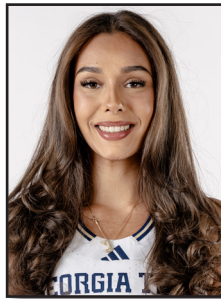
G • 5-6 • r-So.
Atlanta, Ga.
Texas A&M/St. Francis HS
(Ga.)

**#4 Leyre Urdiain**

(Lay-ray Oor-EE-dain)
G • 5-11 • Fr.
Zaragova, Spain
Sansueña

**#5 Catherine Alben**

G • 5-7 • Sr.
Snellville, Ga.
Charleston Southern/
Grayson HS (Ga.)

**#12 Jada Crawshaw**

F • 6-0 • Jr.
Darwin, Australia
Long Beach State

**#13 Déborah Mukeba**

(Day-bor-ah)
C • 6-5 • So.
Fleurus, Belgium
Boston College/Winston-Salem
Christian School (N.C.)

**#20 Ariadna Termis**

(are-e-AH-na)
C • 6-6 • Jr.
Zaragova, Spain
IES Joaquim Blume

**#21 Talayah Walker**

(ta-LAY-ah)
G • 5-10 • So.
Odenton, Md.
Penn State/Our Lady of
Good Counsel (Pa.)

**#22 Inés Noguero**

(e-nez no-RAY-doh)
G • 5-11 • Sr.
Gijón, Spain
Joaquim Blume

**#23 La'Nya Foster**

G • 5-10 • Jr.
Riverdale, Ga.
Austin Peay/Lovejoy HS (Ga.)

**#32 D'Asia Thomas-Harris**

G/F • 6-2 • Jr.
Katy, Texas
Houston Christian (Texas)

**#33 Savannah Samuel**

G • 6-1 • 5th
Woodstock, Ga.
Boston College/St. Francis
HS (Ga.)

**Karen Blair**

Head Coach
First Season

**Marsha Frese**

Assistant Coach
First Season

**Chris Meadows, Sr.**

Assistant Coach
First Season

**Ben Kantor**

Assistant Coach
First Season

**Morgan Williams**

Assistant Coach
First Season

**Caleb Currier**

Assistant Coach/Director of
Recruiting Operations
Fourth Season