



Officials: Ted Valentine, Lamar Simpson, Justin Porterfield

Georgia Tech - 43

Record: 16-15 (10-10)

NO.	Name	F	Min	FG			3P			FT			Rebounds			Fouls		TP	AS	TO	ST	Blocks		+/-
				M-A	M-A	M-A	OR	DR	TOT	PF	FD	BS	BA											
11	Baye Ndongo	F	35:15	5-10	0-1	3-4	2	8	10	2	4	13	1	4	2	2	2	-19						
30	Ibrahim Souare	F	26:37	3-7	0-0	2-2	3	8	11	3	1	8	0	1	1	1	-18							
31	Duncan Powell	F	35:03	0-8	0-6	0-2	1	4	5	0	1	0	1	2	0	1	-30							
0	Lance Terry	G	26:18	1-10	1-8	0-0	1	2	3	4	0	3	2	4	0	0	-30							
1	Naithan George	G	33:56	3-8	1-3	0-1	2	4	6	2	4	7	3	5	1	1	-33							
3	Jaeden Mustaf		24:58	4-9	1-4	3-5	0	0	0	2	3	12	1	0	1	-12								
10	Darrion Sutton		14:07	0-2	0-1	0-0	0	1	1	1	0	0	2	0	0	6								
33	Marcos San Miguel		01:53	0-0	0-0	0-0	0	0	0	0	0	0	0	0	0	3								
35	Emmer Nichols		01:53	0-0	0-0	0-0	0	0	0	0	0	0	0	0	0	3								
Team							3	1	4			0		0										
Totals				16-54	3-23	8-14	12	28	40	14	13	43	10	16	5	5	6	-26						

Shooting By Period		
1 st FG%	5-27	18.5%
3PT%	2-17	11.8%
FT%	3-4	75%
2 nd FG%	11-27	40.7%
3PT%	1-6	16.7%
FT%	5-10	50%
GM FG%	16-54	29.6%
3PT%	3-23	13.0%
FT%	8-14	57.1%

Dead Ball Rebounds: 3, 0

Technical Fouls::NONE

Wake Forest - 69

Record: 21-10 (13-7)

NO.	Name	F	Min	FG			3P			FT			Rebounds			Fouls		TP	AS	TO	ST	Blocks		+/-
				M-A	M-A	M-A	OR	DR	TOT	PF	FD	BS	BA											
25	Tre'Von Spillers	F	30:57	3-9	0-2	0-0	1	3	4	1	0	6	3	1	1	2	0	31						
4	Efton Reid	C	27:37	5-7	2-2	0-0	6	7	13	3	2	12	0	2	2	0	20							
6	Cameron Hildreth	G	33:42	4-13	1-6	5-8	1	1	2	0	6	14	1	0	6	1	18							
8	Ty-Laur Johnson	G	24:47	3-7	2-5	0-0	0	1	1	2	1	8	4	2	0	0	-2							
23	Hunter Sallis	G	32:13	4-14	3-8	2-2	0	5	5	3	1	13	4	1	1	1	31							
2	Juke Harris		24:04	2-4	2-3	3-4	2	6	8	2	2	9	2	0	2	1	19							
0	Omaha Biliew		13:43	3-6	1-2	0-0	0	5	5	2	2	7	1	2	1	1	10							
7	Parker Friedrichsen		07:23	0-1	0-1	0-0	0	1	1	0	0	0	0	0	0	0	14							
44	Owen Kmety		01:53	0-0	0-0	0-0	0	0	0	0	0	0	0	0	0	0	-3							
51	Kevin Dunn		01:53	0-2	0-2	0-0	0	0	0	0	0	0	0	0	0	0	-4							
40	RJ Kennah		01:48	0-0	0-0	0-0	0	0	0	0	0	0	0	1	0	0	-4							
Team							3	0	3			0		0										
Totals				24-63	11-31	10-14	13	29	42	13	14	69	15	9	13	6	5	26						

Shooting By Period		
1 st FG%	12-34	35.3%
3PT%	6-16	37.5%
FT%	4-6	66.7%
2 nd FG%	12-29	41.4%
3PT%	5-15	33.3%
FT%	6-8	75%
GM FG%	24-63	38.1%
3PT%	11-31	35.5%
FT%	10-14	71.4%

Dead Ball Rebounds: 2, 0

Technical Fouls::NONE

	GTECH	WFU
Biggest lead	2 (1 st 19:22)	31 (2 nd 4:26)
Best Scoring Run	7 (2 nd 9:31)	14 (2 nd 4:26)
Lead Changes	3	
Times Tied	1	
Time with Lead	00:43	38:14

	GTECH	WFU
Points from		
Turnovers	7	23
Paint	22	24
Second Chance	12	14
Fast Breaks	4	9
Bench	12	16

	Period by Period Scoring		
	1st	2nd	TOT
GTECH	15	28	43
WFU	34	35	69



Period 1

Quarter Starters:

WFU	4 Reid E	6 Hildreth C	8 Johnson T	23 Sallis H	25 Spillers T
GTECH	0 Terry L	1 George N	11 Ndongo B	30 Souare I	31 Powell D

Game Time	WFU	Score	Diff	GTECH
20:00	4 REID E jumpball won			30 SQUARE I jumpball lost
19:41	6 HILDRETH C 2pt FG in the paint, turnaround jump shot missed			
19:38				30 SQUARE I defensive rebound (1)
19:22		0-2	-2	11 NDONGO B 2pt FG in the paint, layup made (2)
19:22				1 GEORGE N assist (1)
19:04	8 JOHNSON T 3pt FG , jump shot made (3)	3-2	1	
19:04	23 SALLIS H assist (1)			
18:40				31 POWELL D 3pt FG , jump shot missed
18:36	4 REID E defensive rebound (1)			
18:22	25 SPILLERS T 2pt FG in the paint, layup missed			
18:19				1 GEORGE N defensive rebound (1)
18:11				30 SQUARE I 2pt FG in the paint, layup missed
18:11				offensive dead ball rebound (1)
18:11	jump ball situation			
18:01	jump ball situation			
18:01	4 REID E steal (1)			11 NDONGO B turnover lost ball (1)
17:47	6 HILDRETH C 2pt FG from turnover in the paint, driving layup missed			
17:45				11 NDONGO B defensive rebound (1)
17:41				11 NDONGO B 2pt FG in the paint, alleyoop missed
17:38	23 SALLIS H defensive rebound (1)			
17:35	8 JOHNSON T 3pt FG , jump shot missed			
17:32				1 GEORGE N defensive rebound (2)
17:25				31 POWELL D 3pt FG , jump shot missed
17:22				31 POWELL D offensive rebound (1)
17:21				31 POWELL D 2pt FG second chance in the paint, driving layup missed
17:18				30 SQUARE I offensive rebound (2)
17:12	8 JOHNSON T foul personal (1 - 1)			1 GEORGE N foul drawn (1)
16:58		3-5	-2	1 GEORGE N 3pt FG second chance, step back jump shot made (3)
16:33	6 HILDRETH C 3pt FG , step back jump shot made (3)	6-5	1	
16:15				11 NDONGO B 2pt FG in the paint, alleyoop missed
16:12	4 REID E defensive rebound (2)			
16:05	25 SPILLERS T 2pt FG in the paint, layup made (2)	8-5	3	
16:05	6 HILDRETH C assist (1)			
15:48	6 HILDRETH C steal (1)			1 GEORGE N turnover bad pass (1)
15:37	8 JOHNSON T 2pt FG from turnover in the paint, driving layup missed			
15:35				0 TERRY L defensive rebound (1)
15:31				1 GEORGE N 2pt FG in the paint, driving layup blocked
15:31	6 HILDRETH C block (1)			
15:27	25 SPILLERS T defensive rebound (1)			
15:22	23 SALLIS H 3pt FG , jump shot missed			



Georgia Tech at Wake Forest

03/08/25 LJVM Coliseum, Winston-Salem
2024-25 Men's Basketball

Game Time: 2:15 PM
Game Duration: 1:58
Attendance: 8,994

Officials: Ted Valentine, Lamar Simpson, Justin Porterfield

Game Time	WFU	Score	Diff	GTECH
15:19				11 NDONGO B defensive rebound (2)
15:19	jump ball situation			
15:19	Timeout media			
15:19	25 SPILLERS T substitution out			
15:19	2 HARRIS J substitution in			
15:19				30 SQUARE I substitution out
15:19				3 MUSTAF J substitution in
15:05		8-7	1	3 MUSTAF J 2pt FG in the paint, pull up jump shot made (2)
14:43	4 REID E 2pt FG in the paint, layup made (2)	10-7	3	
14:43	8 JOHNSON T assist (1)			
14:15				31 POWELL D 3pt FG , jump shot missed
14:11	2 HARRIS J defensive rebound (1)			
13:46	23 SALLIS H 2pt FG outside the paint, jump shot missed			
13:43	6 HILDRETH C offensive rebound (1)			
13:41	23 SALLIS H 3pt FG second chance, jump shot missed			
13:38				11 NDONGO B defensive rebound (3)
13:28				1 GEORGE N 2pt FG in the paint, floating jump shot missed
13:24				1 GEORGE N offensive rebound (3)
13:23		10-10	0	0 TERRY L 3pt FG second chance, jump shot made (3)
13:23				1 GEORGE N assist (2)
12:58	2 HARRIS J foul drawn (1)			1 GEORGE N foul shooting (1 - 1)
12:58	2 HARRIS J free throw 1 - 2 missed			
12:58	offensive dead ball rebound (1)			
12:58	4 REID E substitution out			
12:58	6 HILDRETH C substitution out			
12:58	8 JOHNSON T substitution out			
12:58	0 BILIEW O substitution in			
12:58	7 FRIEDRICHSEN P substitution in			
12:58	25 SPILLERS T substitution in			
12:58				11 NDONGO B substitution out
12:58				30 SQUARE I substitution in
12:58	2 HARRIS J free throw 2 - 2 made (1)	11-10	1	
12:42	2 HARRIS J steal (1)			0 TERRY L turnover lost ball (1)
12:28	23 SALLIS H 3pt FG from turnover, jump shot made (3)	14-10	4	
12:28	25 SPILLERS T assist (1)			
12:07				3 MUSTAF J 3pt FG , jump shot missed
12:04	7 FRIEDRICHSEN P defensive rebound (1)			
12:00	7 FRIEDRICHSEN P 3pt FG , jump shot missed			
11:57				30 SQUARE I defensive rebound (3)
11:37				3 MUSTAF J 2pt FG in the paint, driving layup blocked
11:37	25 SPILLERS T block (1)			
11:37	25 SPILLERS T defensive rebound (2)			
11:17	0 BILIEW O 2pt FG in the paint, layup made (2)	16-10	6	
11:16				Timeout 30 Sec
11:16	Timeout media			
11:16				31 POWELL D substitution out
11:16				11 NDONGO B substitution in
11:09				0 TERRY L 3pt FG , jump shot missed
11:01	23 SALLIS H defensive rebound (2)			



Game Time	WFU	Score	Diff	GTECH
11:01	jump ball situation			
10:39	0 BILIEW O 2pt FG in the paint, layup blocked			
10:39				30 SQUARE I block (1)
10:33	2 HARRIS J offensive rebound (2)			
10:31	2 HARRIS J 3pt FG second chance, jump shot made (4)	19-10	9	
10:12				1 GEORGE N 3pt FG , jump shot blocked
10:12	0 BILIEW O block (1)			
10:10	23 SALLIS H defensive rebound (3)			
10:06	2 HARRIS J 3pt FG , jump shot missed			
10:02				30 SQUARE I defensive rebound (4)
09:40				0 TERRY L 3pt FG , jump shot missed
09:37				11 NDONGO B offensive rebound (4)
09:36	23 SALLIS H foul personal (1 - 2)			11 NDONGO B foul drawn (1)
09:36	2 HARRIS J substitution out			
09:36	25 SPILLERS T substitution out			
09:36	4 REID E substitution in			
09:36	6 HILDRETH C substitution in			
09:36				3 MUSTAF J substitution out
09:36				31 POWELL D substitution in
09:34				0 TERRY L 3pt FG second chance, jump shot missed
09:31	4 REID E defensive rebound (3)			
09:19	6 HILDRETH C 3pt FG , jump shot missed			
09:16				30 SQUARE I defensive rebound (5)
08:59	23 SALLIS H steal (1)			1 GEORGE N turnover bad pass (2)
08:49	0 BILIEW O turnover lost ball (1)			
08:49	23 SALLIS H substitution out			
08:49	8 JOHNSON T substitution in			
08:49				30 SQUARE I substitution out
08:49				10 SUTTON D substitution in
08:35	4 REID E foul shooting (1 - 3)			11 NDONGO B foul drawn (2)
08:35				11 NDONGO B free throw 1 - 2 missed
08:35				offensive dead ball rebound (2)
08:35		19-11	8	11 NDONGO B free throw 2 - 2 made (3)
08:20	6 HILDRETH C 2pt FG in the paint, driving layup missed			
08:17				31 POWELL D defensive rebound (2)
08:11				0 TERRY L 3pt FG , step back jump shot missed
08:07	0 BILIEW O defensive rebound (1)			
07:54	0 BILIEW O turnover lost ball (2)			1 GEORGE N steal (1)
07:50				0 TERRY L 3pt FG from turnover, jump shot missed
07:47	0 BILIEW O defensive rebound (2)			
07:30	6 HILDRETH C foul drawn (1)			0 TERRY L foul personal (1 - 2)
07:30	Timeout media			
07:30	0 BILIEW O substitution out			
07:30	7 FRIEDRICHSEN P substitution out			
07:30	23 SALLIS H substitution in			
07:30	25 SPILLERS T substitution in			
07:25	23 SALLIS H turnover lost ball (1)			11 NDONGO B steal (1)
07:00				10 SUTTON D 3pt FG from turnover, jump shot missed
06:58	23 SALLIS H defensive rebound (4)			



Georgia Tech at Wake Forest

03/08/25 LJVM Coliseum, Winston-Salem
2024-25 Men's Basketball

Game Time: 2:15 PM
Game Duration: 1:58
Attendance: 8,994

Officials: Ted Valentine, Lamar Simpson, Justin Porterfield

Game Time	WFU	Score	Diff	GTECH
06:36	6 HILDRETH C foul drawn (2)			11 NDONGO B foul shooting (1 - 3)
06:36	6 HILDRETH C free throw 1 - 2 missed			
06:36	offensive dead ball rebound (2)			
06:36	6 HILDRETH C free throw 2 - 2 made (4)	20-11	9	
06:24				1 GEORGE N 3pt FG , step back jump shot missed
06:21	4 REID E defensive rebound (4)			
06:08	23 SALLIS H 3pt FG , jump shot missed			
06:06	4 REID E offensive rebound (5)			
06:03	23 SALLIS H foul drawn (1)			0 TERRY L foul shooting (2 - 4)
06:03	23 SALLIS H free throw 1 - 2 made (4)	21-11	10	
06:03				0 TERRY L substitution out
06:03				10 SUTTON D substitution out
06:03				3 MUSTAF J substitution in
06:03				30 SQUARE I substitution in
06:03	23 SALLIS H free throw 2 - 2 made (5)	22-11	11	
05:47		22-13	9	30 SQUARE I 2pt FG in the paint, dunk, made (2)
05:47				11 NDONGO B assist (1)
05:28	4 REID E turnover lost ball (1)			
05:07				31 POWELL D turnover out of bounds (1)
04:50	25 SPILLERS T 3pt FG from turnover, jump shot missed			
04:47	4 REID E offensive rebound (6)			
04:44	8 JOHNSON T 3pt FG from turnover second chance, jump shot missed			
04:41	offensive rebound (19)			
04:30	6 HILDRETH C 2pt FG from turnover second chance in the paint, driving layup blocked			
04:30				31 POWELL D block (1)
04:30				31 POWELL D defensive rebound (3)
04:20	8 JOHNSON T foul shooting (2 - 4)			30 SQUARE I foul drawn (1)
04:20		22-14	8	30 SQUARE I free throw 1 - 2 made (3)
04:20	8 JOHNSON T substitution out			
04:20	2 HARRIS J substitution in			
04:20		22-15	7	30 SQUARE I free throw 2 - 2 made (4)
03:56	4 REID E 2pt FG in the paint, hook shot missed			
03:54	4 REID E offensive rebound (7)			
03:53	4 REID E 2pt FG second chance in the paint, dunk, made (4)	24-15	9	
03:29	6 HILDRETH C steal (2)			1 GEORGE N turnover bad pass (3)
03:24	23 SALLIS H 2pt FG from turnover in the paint, driving layup blocked			
03:24				11 NDONGO B block (1)
03:24	offensive rebound (21)			
03:24	Timeout media			
03:01	4 REID E 2pt FG from turnover second chance outside the paint, hook shot made (6)	26-15	11	
03:01	23 SALLIS H assist (2)			
02:46				3 MUSTAF J 3pt FG , jump shot missed
02:42	4 REID E defensive rebound (8)			
02:35	4 REID E foul drawn (1)			30 SQUARE I foul personal (1 - 5)
02:35				30 SQUARE I substitution out
02:35				0 TERRY L substitution in



Georgia Tech at Wake Forest

03/08/25 LJVM Coliseum, Winston-Salem
2024-25 Men's Basketball

Officials: Ted Valentine, Lamar Simpson, Justin Porterfield

Game Time	WFU	Score	Diff	GTECH
02:23	2 HARRIS J 2pt FG in the paint, driving layup missed			
02:21	4 REID E offensive rebound (9)			
02:20	25 SPILLERS T 3pt FG second chance, jump shot missed			
02:18				1 GEORGE N defensive rebound (4)
02:08	25 SPILLERS T steal (1)			0 TERRY L turnover bad pass (2)
02:03	6 HILDRETH C 2pt FG fast break from turnover in the paint, layup made (6)	28-15	13	
01:58				0 TERRY L 3pt FG , jump shot missed
01:55	4 REID E defensive rebound (10)			
01:55	6 HILDRETH C substitution out			
01:55	7 FRIEDRICHSEN P substitution in			
01:37	23 SALLIS H 2pt FG outside the paint, pull up jump shot missed			
01:33	25 SPILLERS T offensive rebound (3)			
01:30	23 SALLIS H 3pt FG second chance, jump shot made (8)	31-15	16	
01:30	25 SPILLERS T assist (2)			
01:03	23 SALLIS H foul personal (2 - 5)			1 GEORGE N foul drawn (2)
00:47				11 NDONGO B turnover lost ball (2)
00:47	23 SALLIS H substitution out			
00:47	6 HILDRETH C substitution in			
00:47	Timeout 30 Sec			
00:47				0 TERRY L substitution out
00:47				10 SUTTON D substitution in
00:29	4 REID E 3pt FG from turnover, jump shot made (9)	34-15	19	
00:29	2 HARRIS J assist (1)			
00:04				3 MUSTAF J 3pt FG , jump shot missed
00:01	2 HARRIS J defensive rebound (3)			
END OF PERIOD				
WFU 34-15 GTECH				



Officials: Ted Valentine, Lamar Simpson, Justin Porterfield

Georgia Tech - 15

NO.	Name	Min	FG			Rebounds			Fouls		TP	AS	TO	ST	Blocks		+/-
			M-A	3P	FT	OR	DR	TOT	PF	FD					BS	BA	
11	Baye Ndongo	F 18:18	1-3	0-0	1-2	1	3	4	1	2	3	1	2	1	1	0	-13
30	Ibrahim Souare	F 12:18	1-2	0-0	2-2	1	4	5	1	1	4	0	0	0	1	0	-13
31	Duncan Powell	F 18:20	0-4	0-3	0-0	1	2	3	0	0	0	0	1	0	1	0	-16
0	Lance Terry	G 15:45	1-7	1-7	0-0	0	1	1	2	0	3	0	2	0	0	0	-15
1	Naithan George	G 20:00	1-5	1-3	0-0	1	3	4	1	2	3	2	3	1	0	2	-19
3	Jaeden Mustaf	11:46	1-5	0-3	0-0	0	0	0	0	0	2	0	0	0	0	1	-15
10	Darrion Sutton	03:33	0-1	0-1	0-0	0	0	0	0	0	0	0	0	0	0	0	-4
Team						0	0	0			0						
Totals			5-27	2-17	3-4	4	13	17	5	5	15	3	8	2	3	3	-19

Shooting By Period		
1st FG%	5-27	18.5%
3PT%	2-17	11.8%
FT%	3-4	75%
GM FG%	5-27	18.5%
3PT%	2-17	11.8%
FT%	3-4	75.0%

Dead Ball Rebounds: 2, 0

Technical Fouls::NONE

Wake Forest - 34

NO.	Name	Min	FG			Rebounds			Fouls		TP	AS	TO	ST	Blocks		+/-
			M-A	3P	FT	OR	DR	TOT	PF	FD					BS	BA	
25	Tre'Von Spillers	F 15:33	1-4	0-2	0-0	1	2	3	0	0	2	2	0	1	1	0	23
4	Efton Reid	C 16:38	4-5	1-1	0-0	4	6	10	1	1	9	0	1	1	0	0	10
6	Cameron Hildreth	G 15:30	2-7	1-2	1-2	1	0	1	0	2	6	1	0	2	1	1	7
8	Ty-Laur Johnson	G 11:31	1-4	1-3	0-0	0	0	0	2	0	3	1	0	0	0	0	-1
23	Hunter Sallis	G 17:54	2-8	2-5	2-2	0	4	4	2	1	8	2	1	1	0	1	17
2	Juke Harris	10:03	1-3	1-2	1-2	1	2	3	0	1	4	1	0	1	0	0	17
0	Omaha Biliew	05:28	1-2	0-0	0-0	0	2	2	0	0	2	0	2	0	1	1	8
7	Parker Friedrichsen	07:23	0-1	0-1	0-0	0	1	1	0	0	0	0	0	0	0	0	14
Team						2	0	2			0						
Totals			12-34	6-16	4-6	9	17	26	5	5	34	7	4	6	3	3	19

Shooting By Period		
1st FG%	12-34	35.3%
3PT%	6-16	37.5%
FT%	4-6	66.7%
GM FG%	12-34	35.3%
3PT%	6-16	37.5%
FT%	4-6	66.7%

Dead Ball Rebounds: 2, 0

Technical Fouls::NONE

	GTECH	WFU	Points from		Period by Period Scoring			
Biggest lead	2 (1 st 19:22)	19 (1 st 0:29)	Turnovers	1	10			
Best Scoring Run	4(1 st 4:20)	12(1 st 0:29)	Paint	6	10			
Lead Changes	3		Second Chance	6	12			
Times Tied	1		Fast Breaks	0	2			
Time with Lead	00:43	18:14	Bench	2	6			
					GTECH	15	28	43
					WFU	34	35	69



Georgia Tech at Wake Forest

03/08/25 LJV Coliseum, Winston-Salem
2024-25 Men's Basketball

Officials: Ted Valentine, Lamar Simpson, Justin Porterfield

Period 2

Quarter Starters:

WFU	4 Reid E	6 Hildreth C	8 Johnson T	23 Sallis H	25 Spillers T
GTECH	0 Terry L	1 George N	11 Ndongo B	30 Square I	31 Powell D

Game Time	WFU	Score	Diff	GTECH
20:00	2 HARRIS J substitution out			
20:00	7 FRIEDRICHSEN P substitution out			
20:00	8 JOHNSON T substitution in			
20:00	23 SALLIS H substitution in			
20:00				3 MUSTAF J substitution out
20:00				10 SUTTON D substitution out
20:00				0 TERRY L substitution in
20:00				30 SQUARE I substitution in
19:33				0 TERRY L 2pt FG in the paint, turnaround jump shot missed
19:28				30 SQUARE I offensive rebound (6)
19:19		34-17	17	1 GEORGE N 2pt FG second chance outside the paint, pull up jump shot made (5)
18:58	6 HILDRETH C 3pt FG , jump shot missed			
18:54				11 NDONGO B defensive rebound (5)
18:50	6 HILDRETH C steal (3)			1 GEORGE N turnover lost ball (4)
18:42	23 SALLIS H 3pt FG fast break from turnover, jump shot made (11)	37-17	20	
18:42	8 JOHNSON T assist (2)			
18:21	4 REID E foul shooting (2 - 1)			31 POWELL D foul drawn (1)
18:21				31 POWELL D free throw 1 - 2 missed
18:21				offensive dead ball rebound (3)
18:21				31 POWELL D free throw 2 - 2 missed
18:21				1 GEORGE N offensive rebound (5)
18:14	4 REID E steal (2)			0 TERRY L turnover lost ball (3)
17:44	25 SPILLERS T 2pt FG from turnover outside the paint, hook shot missed			
17:42	4 REID E offensive rebound (11)			
17:39	8 JOHNSON T 3pt FG from turnover second chance, jump shot missed			
17:35				0 TERRY L defensive rebound (2)
17:25		37-19	18	11 NDONGO B 2pt FG in the paint, jump shot made (5)
17:25				0 TERRY L assist (1)
16:57	25 SPILLERS T 2pt FG in the paint, hook shot missed			
16:57				defensive rebound (22)
16:47		37-21	16	1 GEORGE N 2pt FG outside the paint, pull up jump shot made (7)
16:18	8 JOHNSON T 2pt FG in the paint, jump shot made (5)	39-21	18	
16:05	4 REID E foul shooting (3 - 2)			11 NDONGO B foul drawn (3)
16:05		39-22	17	11 NDONGO B free throw 1 - 2 made (6)
16:05	4 REID E substitution out			
16:05	0 BILIEW O substitution in			
16:05				30 SQUARE I substitution out
16:05				3 MUSTAF J substitution in
16:05		39-23	16	11 NDONGO B free throw 2 - 2 made (7)
15:47	6 HILDRETH C 3pt FG , jump shot missed			



Georgia Tech at Wake Forest

03/08/25 LJVM Coliseum, Winston-Salem
2024-25 Men's Basketball

Game Time: 2:15 PM
Game Duration: 1:58
Attendance: 8,994

Officials: Ted Valentine, Lamar Simpson, Justin Porterfield

Game Time	WFU	Score	Diff	GTECH
15:43				11 NDONGO B defensive rebound (6)
15:36				31 POWELL D 2pt FG in the paint, floating jump shot missed
15:35				offensive rebound (24)
15:35	Timeout media			
15:33				11 NDONGO B 2pt FG second chance in the paint, layup blocked
15:33	25 SPILLERS T block (2)			
15:32				offensive rebound (25)
15:24				3 MUSTAF J 2pt FG second chance in the paint, driving layup missed
15:22				0 TERRY L offensive rebound (3)
15:19				0 TERRY L 3pt FG second chance, jump shot missed
15:17	0 BILIEW O defensive rebound (3)			
14:54	0 BILIEW O 3pt FG , jump shot made (5)	42-23	19	
14:54	8 JOHNSON T assist (3)			
14:37	0 BILIEW O foul personal (1 - 3)			1 GEORGE N foul drawn (3)
14:32	0 BILIEW O steal (1)			11 NDONGO B turnover lost ball (3)
14:27	25 SPILLERS T 2pt FG fast break from turnover in the paint, layup made (4)	44-23	21	
14:27	0 BILIEW O assist (1)			
14:14				31 POWELL D 3pt FG , jump shot missed
14:11	0 BILIEW O defensive rebound (4)			
14:04	8 JOHNSON T 3pt FG , jump shot made (8)	47-23	24	
14:04	23 SALLIS H assist (3)			
14:01				Timeout 30 Sec
14:01	Timeout media			
14:01	23 SALLIS H substitution out			
14:01	2 HARRIS J substitution in			
14:01				1 GEORGE N substitution out
14:01				31 POWELL D substitution out
14:01				10 SUTTON D substitution in
14:01				30 SQUARE I substitution in
13:42	25 SPILLERS T foul shooting (1 - 4)			3 MUSTAF J foul drawn (1)
13:42		47-24	23	3 MUSTAF J free throw 1 - 2 made (3)
13:42		47-25	22	3 MUSTAF J free throw 2 - 2 made (4)
13:25	6 HILDRETH C foul drawn (3)			0 TERRY L foul personal (3 - 1)
13:17	25 SPILLERS T turnover lost ball (1)			11 NDONGO B steal (2)
13:11		47-27	20	11 NDONGO B 2pt FG fast break from turnover in the paint, layup made (9)
13:11				0 TERRY L assist (2)
12:37	0 BILIEW O foul drawn (1)			30 SQUARE I foul personal (2 - 2)
12:37				11 NDONGO B substitution out
12:37				31 POWELL D substitution in
12:20	6 HILDRETH C foul drawn (4)			0 TERRY L foul shooting (4 - 3)
12:20	6 HILDRETH C free throw 1 - 3 made (7)	48-27	21	
12:20	6 HILDRETH C free throw 2 - 3 made (8)	49-27	22	
12:20				0 TERRY L substitution out
12:20				1 GEORGE N substitution in
12:20	6 HILDRETH C free throw 3 - 3 made (9)	50-27	23	
12:04	2 HARRIS J foul shooting (1 - 5)			3 MUSTAF J foul drawn (2)



Georgia Tech at Wake Forest

03/08/25 LJVM Coliseum, Winston-Salem
2024-25 Men's Basketball

Game Time: 2:15 PM
Game Duration: 1:58
Attendance: 8,994

Officials: Ted Valentine, Lamar Simpson, Justin Porterfield

Game Time	WFU	Score	Diff	GTECH
12:04		50-28	22	3 MUSTAF J free throw 1 - 2 made (5)
12:04				3 MUSTAF J free throw 2 - 2 missed
12:04	25 SPILLERS T defensive rebound (4)			
11:44	0 BILIEW O 2pt FG in the paint, dunk, made (7)	52-28	24	
11:44	8 JOHNSON T assist (4)			
11:34				31 POWELL D 3pt FG , jump shot missed
11:30	8 JOHNSON T defensive rebound (1)			
11:27	8 JOHNSON T foul drawn (1)			3 MUSTAF J foul personal (1 - 4)
11:27	Timeout media			
11:27				30 SQUARE I substitution out
11:27				11 NDONGO B substitution in
11:11	0 BILIEW O 2pt FG in the paint, turnaround jump shot missed			
11:09				11 NDONGO B defensive rebound (7)
10:53		52-31	21	3 MUSTAF J 3pt FG , jump shot made (8)
10:53				1 GEORGE N assist (3)
10:33	0 BILIEW O foul drawn (2)			1 GEORGE N foul personal (2 - 5)
10:13	8 JOHNSON T turnover (1)			
10:13	8 JOHNSON T substitution out			
10:13	23 SALLIS H substitution in			
09:58		52-33	19	11 NDONGO B 2pt FG from turnover in the paint, floating jump shot made (11)
09:58				3 MUSTAF J assist (1)
09:50	6 HILDRETH C 3pt FG , jump shot missed			
09:46				1 GEORGE N defensive rebound (6)
09:31		52-35	17	11 NDONGO B 2pt FG in the paint, layup made (13)
09:31				31 POWELL D assist (1)
09:31	Timeout 30 Sec			
09:04	25 SPILLERS T 2pt FG in the paint, hook shot missed			
09:02				31 POWELL D defensive rebound (4)
08:57	0 BILIEW O foul personal (2 - 6)			11 NDONGO B foul drawn (4)
08:57	25 SPILLERS T substitution out			
08:57	4 REID E substitution in			
08:57	23 SALLIS H foul personal (3 - 7)			1 GEORGE N foul drawn (4)
08:57				1 GEORGE N 1&1 free throw 1 missed
08:57	0 BILIEW O defensive rebound (5)			
08:40	0 BILIEW O 3pt FG , jump shot missed			
08:37	4 REID E offensive rebound (12)			
08:34	6 HILDRETH C 3pt FG second chance, jump shot missed			
08:31				31 POWELL D defensive rebound (5)
08:28	6 HILDRETH C steal (4)			31 POWELL D turnover bad pass (2)
08:21	23 SALLIS H 2pt FG fast break from turnover in the paint, pull up jump shot made (13)	54-35	19	
08:06				31 POWELL D 3pt FG , jump shot missed
08:03	2 HARRIS J defensive rebound (4)			
07:50	4 REID E foul drawn (2)			10 SUTTON D foul personal (1 - 6)
07:50	Timeout media			
07:50	0 BILIEW O substitution out			
07:50	25 SPILLERS T substitution in			
07:50				10 SUTTON D substitution out
07:50				30 SQUARE I substitution in



Georgia Tech at Wake Forest

03/08/25 LJVM Coliseum, Winston-Salem
2024-25 Men's Basketball

Game Time: 2:15 PM
Game Duration: 1:58
Attendance: 8,994

Officials: Ted Valentine, Lamar Simpson, Justin Porterfield

Game Time	WFU	Score	Diff	GTECH
07:44	23 SALLIS H 2pt FG in the paint, floating jump shot blocked			
07:44				1 GEORGE N block (1)
07:41				30 SQUARE I defensive rebound (7)
07:25	6 HILDRETH C steal (5)			1 GEORGE N turnover lost ball (5)
07:16	23 SALLIS H 2pt FG from turnover in the paint, dunk, blocked			
07:16				11 NDONGO B block (2)
07:16	offensive rebound (35)			
07:16				3 MUSTAF J substitution out
07:16				0 TERRY L substitution in
07:07	4 REID E 2pt FG from turnover second chance in the paint, layup missed			
07:05				11 NDONGO B defensive rebound (8)
06:55	2 HARRIS J steal (2)			11 NDONGO B turnover lost ball (4)
06:46	2 HARRIS J 3pt FG from turnover, jump shot made (7)	57-35	22	
06:46	23 SALLIS H assist (4)			
06:30				0 TERRY L 2pt FG in the paint, layup missed
06:30	2 HARRIS J defensive rebound (5)			
06:24	6 HILDRETH C 2pt FG in the paint, layup made (11)	59-35	24	
06:24	6 HILDRETH C foul drawn (5)			11 NDONGO B foul shooting (2 - 7)
06:24	6 HILDRETH C free throw 1 - 1 missed			
06:24				11 NDONGO B defensive rebound (9)
06:09				30 SQUARE I 2pt FG in the paint, layup blocked
06:09	23 SALLIS H block (1)			
06:04	23 SALLIS H defensive rebound (5)			
05:47	23 SALLIS H 3pt FG , jump shot missed			
05:41	2 HARRIS J offensive rebound (6)			
05:40	25 SPILLERS T 2pt FG second chance in the paint, dunk, made (6)	61-35	26	
05:40	2 HARRIS J assist (2)			
05:11				1 GEORGE N 2pt FG outside the paint, floating jump shot missed
05:09	4 REID E defensive rebound (13)			
04:53	6 HILDRETH C 2pt FG in the paint, driving layup made (13)	63-35	28	
04:35	6 HILDRETH C steal (6)			0 TERRY L turnover lost ball (4)
04:26	4 REID E 3pt FG from turnover, jump shot made (12)	66-35	31	
04:26	25 SPILLERS T assist (3)			
04:23				Timeout 30 Sec
04:23				Timeout media
04:23				0 TERRY L substitution out
04:23				1 GEORGE N substitution out
04:23				3 MUSTAF J substitution in
04:23				10 SUTTON D substitution in
04:06				10 SUTTON D 2pt FG in the paint, floating jump shot missed
04:03				11 NDONGO B offensive rebound (10)
03:53		66-37	29	3 MUSTAF J 2pt FG second chance in the paint, jump shot made (10)
03:29	4 REID E turnover out of bounds (2)			
03:29	25 SPILLERS T substitution out			
03:29	8 JOHNSON T substitution in			
03:11				30 SQUARE I 2pt FG from turnover in the paint, layup missed



Georgia Tech at Wake Forest

03/08/25 LJVM Coliseum, Winston-Salem
2024-25 Men's Basketball

Game Time: 2:15 PM
Game Duration: 1:58
Attendance: 8,994

Officials: Ted Valentine, Lamar Simpson, Justin Porterfield

Game Time	WFU	Score	Diff	GTECH
03:09				30 SQUARE I offensive rebound (8)
03:07				30 SQUARE I 2pt FG from turnover second chance in the paint, layup missed
03:05	2 HARRIS J defensive rebound (7)			
03:04	2 HARRIS J foul drawn (2)			30 SQUARE I foul personal (3 - 8)
03:04	2 HARRIS J 1&1 free throw 1 made (8)	67-37	30	
03:04	2 HARRIS J 1&1 free throw 2 made (9)	68-37	31	
02:49				11 NDONGO B 3pt FG , jump shot missed
02:47	6 HILDRETH C defensive rebound (2)			
02:36	23 SALLIS H 3pt FG , jump shot missed			
02:33				30 SQUARE I defensive rebound (9)
02:17				11 NDONGO B 2pt FG in the paint, layup blocked
02:17	2 HARRIS J block (1)			
02:17				offensive rebound (37)
02:10		68-39	29	30 SQUARE I 2pt FG second chance in the paint, alleyoop made (6)
02:10				10 SUTTON D assist (1)
01:53	6 HILDRETH C foul drawn (6)			3 MUSTAF J foul personal (2 - 9)
01:53	4 REID E substitution out			
01:53	44 KMETY O substitution in			
01:53				11 NDONGO B substitution out
01:53				31 POWELL D substitution out
01:53				33 SAN MIGUEL M substitution in
01:53				35 NICHOLS E substitution in
01:53	6 HILDRETH C 1&1 free throw 1 made (14)	69-39	30	
01:53	23 SALLIS H substitution out			
01:53	51 DUNN K substitution in			
01:53	6 HILDRETH C 1&1 free throw 2 missed			
01:53				30 SQUARE I defensive rebound (10)
01:50	2 HARRIS J foul personal (2 - 8)			3 MUSTAF J foul drawn (3)
01:48	6 HILDRETH C substitution out			
01:48	40 KENNAH R substitution in			
01:48				3 MUSTAF J 1&1 free throw 1 missed
01:48	2 HARRIS J defensive rebound (8)			
01:31	51 DUNN K 3pt FG , jump shot missed			
01:28				10 SUTTON D defensive rebound (1)
01:20		69-41	28	30 SQUARE I 2pt FG in the paint, layup made (8)
01:20				10 SUTTON D assist (2)
01:08	8 JOHNSON T turnover lost ball (2)			30 SQUARE I steal (1)
01:06				30 SQUARE I turnover lost ball (1)
00:49	40 KENNAH R turnover lost ball (1)			3 MUSTAF J steal (1)
00:46		69-43	26	3 MUSTAF J 2pt FG fast break from turnover in the paint, layup made (12)
00:31	51 DUNN K 3pt FG , jump shot missed			
00:28				30 SQUARE I defensive rebound (11)
END OF GAME				
WFU 69-43 GTECH				



Georgia Tech at Wake Forest

03/08/25 LJVM Coliseum, Winston-Salem
2024-25 Men's Basketball

Game Time: 2:15 PM
Game Duration: 1:58
Attendance: 8,994

Officials: Ted Valentine, Lamar Simpson, Justin Porterfield

Georgia Tech - 28

NO.	Name	Min	FG			Rebounds			Fouls		TP	AS	TO	ST	Blocks		+/-
			M-A	3P	FT	OR	DR	TOT	PF	FD					BS	BA	
11	Baye Ndongo	F 16:57	4-7	0-1	2-2	1	5	6	1	2	10	0	2	1	1	2	-6
30	Ibrahim Souare	F 14:19	2-5	0-0	0-0	2	4	6	2	0	4	0	1	1	0	1	-5
31	Duncan Powell	F 16:43	0-4	0-3	0-2	0	2	2	0	1	0	1	1	0	0	0	-14
0	Lance Terry	G 10:33	0-3	0-1	0-0	1	1	2	2	0	0	2	2	0	0	0	-15
1	Naithan George	G 13:56	2-3	0-0	0-1	1	1	2	1	2	4	1	2	0	1	0	-14
3	Jaeden Mustaf	13:12	3-4	1-1	3-5	0	0	0	2	3	10	1	0	1	0	0	3
10	Darrion Sutton	10:34	0-1	0-0	0-0	0	1	1	1	0	0	2	0	0	0	0	10
33	Marcos San Miguel	01:53	0-0	0-0	0-0	0	0	0	0	0	0	0	0	0	0	0	3
35	Emmer Nichols	01:53	0-0	0-0	0-0	0	0	0	0	0	0	0	0	0	0	0	3
Team						3	1	4			0		0				
Totals			11-27	1-6	5-10	8	15	23	9	8	28	7	8	3	2	3	-7

Shooting By Period		
2 nd FG%	11-27	40.7%
3PT%	1-6	16.7%
FT%	5-10	50%
GM FG%	11-27	40.7%
3PT%	1-6	16.7%
FT%	5-10	50.0%

Dead Ball Rebounds: 1, 0

Technical Fouls::NONE

Wake Forest - 35

NO.	Name	Min	FG			Rebounds			Fouls		TP	AS	TO	ST	Blocks		+/-
			M-A	3P	FT	OR	DR	TOT	PF	FD					BS	BA	
25	Tre'Von Spillers	F 15:24	2-5	0-0	0-0	0	1	1	1	0	4	1	1	0	1	0	8
4	Efton Reid	C 10:59	1-2	1-1	0-0	2	1	3	2	1	3	0	1	1	0	0	10
6	Cameron Hildreth	G 18:12	2-6	0-4	4-6	0	1	1	0	4	8	0	0	4	0	0	11
8	Ty-Laur Johnson	G 13:16	2-3	1-2	0-0	0	1	1	0	1	5	3	2	0	0	0	-1
23	Hunter Sallis	G 14:19	2-6	1-3	0-0	0	1	1	1	0	5	2	0	0	1	2	14
7	Parker Friedrichsen	00:00	0-0	0-0	0-0	0	0	0	0	0	0	0	0	0	0	0	0
0	Omaha Biliew	08:15	2-4	1-2	0-0	0	3	3	2	2	5	1	0	1	0	0	2
2	Juke Harris	14:01	1-1	1-1	2-2	1	4	5	2	1	5	1	0	1	1	0	2
44	Owen Kmety	01:53	0-0	0-0	0-0	0	0	0	0	0	0	0	0	0	0	0	-3
51	Kevin Dunn	01:53	0-2	0-2	0-0	0	0	0	0	0	0	0	0	0	0	0	-4
40	RJ Kennah	01:48	0-0	0-0	0-0	0	0	0	0	0	0	0	1	0	0	0	-4
Team						1	0	1			0		0				
Totals			12-29	5-15	6-8	4	12	16	8	9	35	8	5	7	3	2	7

Shooting By Period		
2 nd FG%	12-29	41.4%
3PT%	5-15	33.3%
FT%	6-8	75%
GM FG%	12-29	41.4%
3PT%	5-15	33.3%
FT%	6-8	75.0%

Dead Ball Rebounds: 0, 0

Technical Fouls::NONE

	GTECH	WFU
Biggest lead	0 (1 st 20:00)	31 (2 nd 4:26)
Best Scoring Run	7(2 nd 9:31)	14(2 nd 4:26)
Lead Changes	0	
Times Tied	0	
Time with Lead	00:00	19:33

Points from	GTECH	WFU
Turnovers	6	13
Paint	16	14
Second Chance	6	2
Fast Breaks	4	7
Bench	10	10

	Period by Period Scoring		
	1st	2nd	TOT
GTECH	15	28	43
WFU	34	35	69



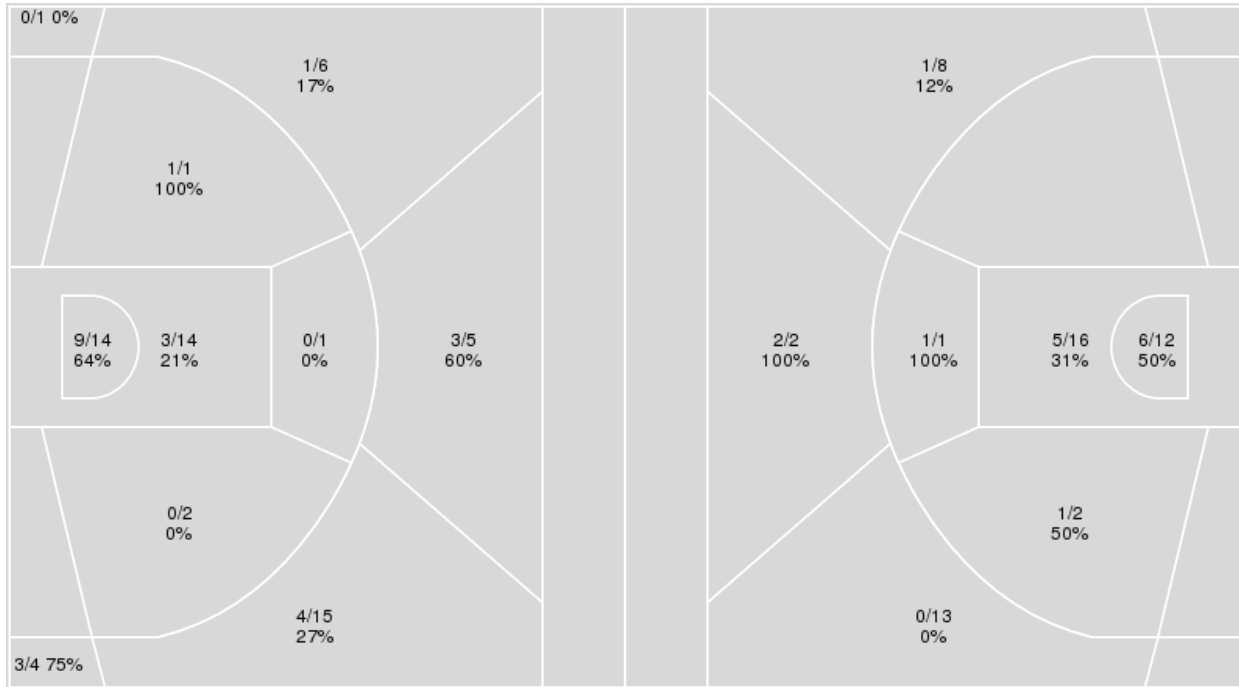
Officials: Ted Valentine, Lamar Simpson, Justin Porterfield

{ Players => 0, 1, 2, 4, 6, 7, 8, 11, 20, 23, 25, 40, 44, 45, 51, 52, 55; }
 FG Types => All; Results => All;

{ Players => 0, 1, 2, 3, 9, 10, 11, 12, 14, 30, 31, 32, 33, 35, 45; } FG
 Types => All; Results => All;

Wake Forest

Georgia Tech



Wake Forest	M/A	%
Field Goals	24/63	38
2 Points	13/32	41
3 Points	11/31	35
Free Throws	10/14	71

Georgia Tech	M/A	%
Field Goals	16/54	30
2 Points	13/31	42
3 Points	3/23	13
Free Throws	8/14	57



Georgia Tech at Wake Forest

03/08/25 LJVM Coliseum, Winston-Salem
2024-25 Men's Basketball

Game Time: 2:15 PM
Game Duration: 1:58
Attendance: 8,994

Officials: Ted Valentine, Lamar Simpson, Justin Porterfield

Georgia Tech

No	Name	Mins		Score		Points Diff		Points per Min		Assists		Rebounds		Steals		Turnovers	
		On	Off	On	Off	On	Off	On	Off	On	Off	On	Off	On	Off	On	Off
0	Lance Terry	26:18	13:42	23 - 53	20 - 16	-30	4	0.87	1.46	4	6	27	13	3	2	11	5
1	Naihan George	33:56	06:04	31 - 64	12 - 5	-33	7	0.91	1.98	7	3	33	7	2	3	15	1
3	Jaeden Mustaf	24:58	15:02	30 - 42	13 - 27	-12	-14	1.20	0.86	8	2	23	17	3	2	9	7
10	Darrion Sutton	14:07	25:53	21 - 15	22 - 54	6	-32	1.49	0.85	6	4	12	28	5	0	2	14
11	Baye Ndongo	35:15	04:45	38 - 57	5 - 12	-19	-7	1.08	1.05	9	1	36	4	3	2	14	2
30	Ibrahim Souare	26:37	13:23	29 - 47	14 - 22	-18	-8	1.09	1.05	6	4	28	12	3	2	12	4
31	Duncan Powell	35:03	04:57	35 - 65	8 - 4	-30	4	1.00	1.62	8	2	35	5	2	3	15	1
33	Marcos San Miguel	01:53	38:07	4 - 1	39 - 68	3	-29	2.12	1.02	1	9	3	37	2	3	1	15
35	Emmer Nichols	01:53	38:07	4 - 1	39 - 68	3	-29	2.12	1.02	1	9	3	37	2	3	1	15

Wake Forest

No	Name	Mins		Score		Points Diff		Points per Min		Assists		Rebounds		Steals		Turnovers	
		On	Off	On	Off	On	Off	On	Off	On	Off	On	Off	On	Off	On	Off
0	Omaha Biliew	13:43	26:17	24 - 14	45 - 29	10	16	1.75	1.71	5	10	15	27	4	9	4	5
2	Juke Harris	24:04	15:56	45 - 26	24 - 17	19	7	1.87	1.51	9	6	27	15	7	6	5	4
4	Efton Reid	27:37	12:23	46 - 26	23 - 17	20	6	1.67	1.86	10	5	32	10	11	2	5	4
6	Cameron Hildreth	33:42	06:18	57 - 39	12 - 4	18	8	1.69	1.91	13	2	35	7	12	1	7	2
7	Parker Friedrichsen	07:23	32:37	15 - 1	54 - 42	14	12	2.03	1.66	3	12	10	32	2	11	2	7
8	Ty-Laur Johnson	24:47	15:13	34 - 36	35 - 7	-2	28	1.37	2.30	8	7	21	21	5	8	7	2
23	Hunter Sallis	32:13	07:47	61 - 30	8 - 13	31	-5	1.89	1.03	13	2	36	6	13	0	4	5
25	TreVon Spillers	30:57	09:03	62 - 31	7 - 12	31	-5	2.00	0.77	14	1	31	11	11	2	5	4
40	RJ Kennah	01:48	38:12	0 - 4	69 - 39	-4	30	0.00	1.81	0	15	1	41	0	13	2	7
44	Owen Kmety	01:53	38:07	1 - 4	68 - 39	-3	29	0.53	1.78	0	15	1	41	0	13	2	7
51	Kevin Dunn	01:53	38:07	0 - 4	69 - 39	-4	30	0.00	1.81	0	15	1	41	0	13	2	7

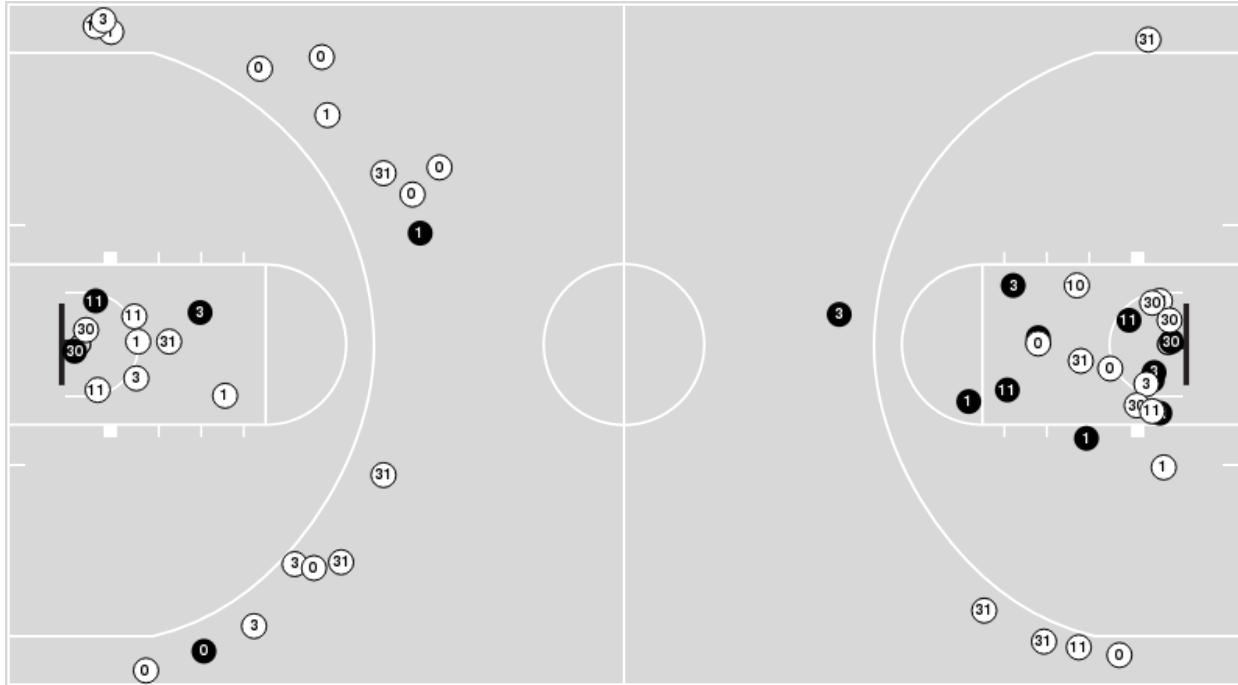


Officials: Ted Valentine, Lamar Simpson, Justin Porterfield

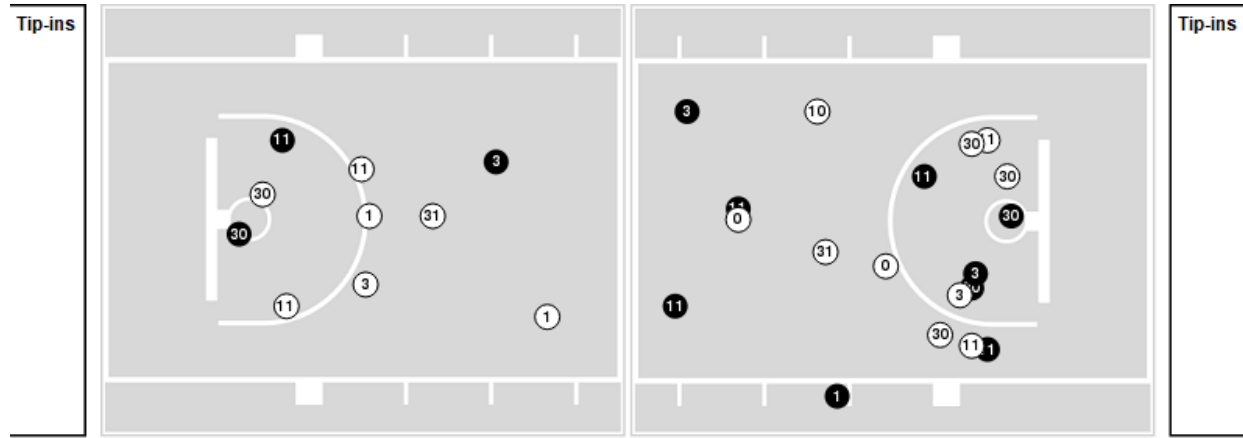
Players => 0, 1, 2, 3, 9, 10, 11, 12, 14, 30, 31, 32, 33, 35, 45 FG Types=>All Results=>All

Georgia Tech

All Field Goals



Blow Up Chart



● Made ○ Missed N - Player Number

Georgia Tech	M/A	%
Field Goals	16/54	30
2 Points	13/31	42
3 Points	3/23	13
Free Throws	8/14	57

Georgia Tech	M/A	%
Points in the Paint	22 (11 / 28)	39
Fast Break Points	4 (2/2)	100
Second Chance Points	12 (5/11)	45
Effective FG%	32	

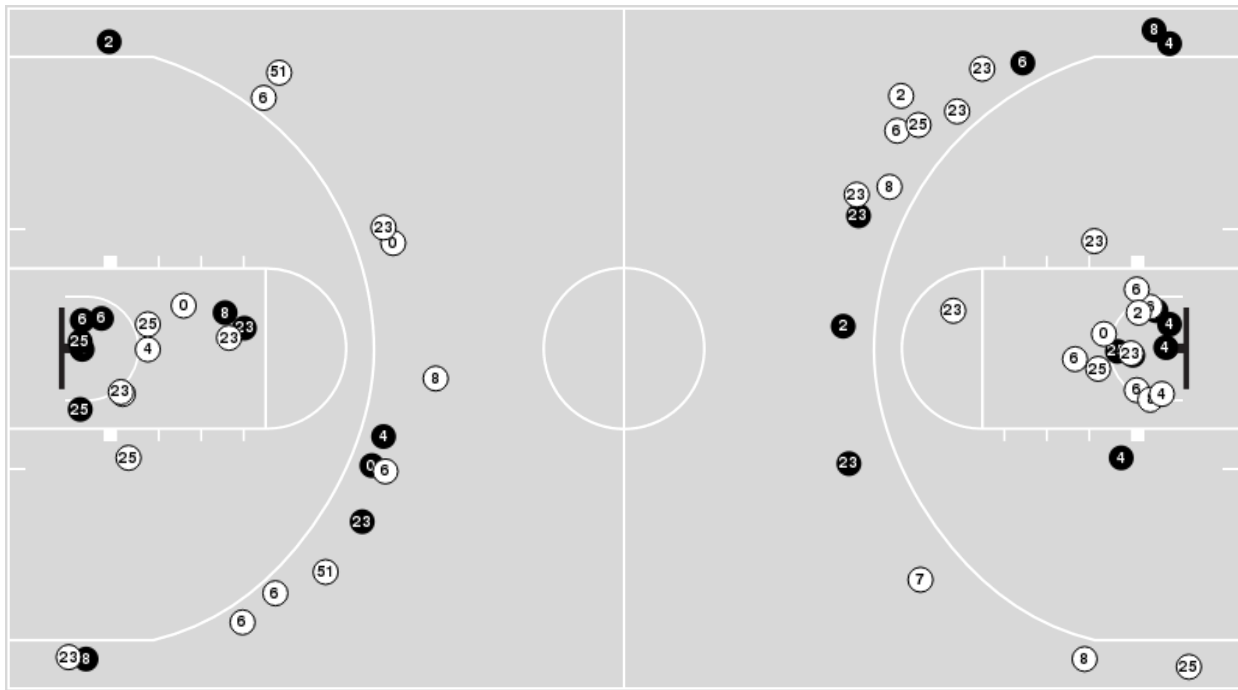


Officials: Ted Valentine, Lamar Simpson, Justin Porterfield

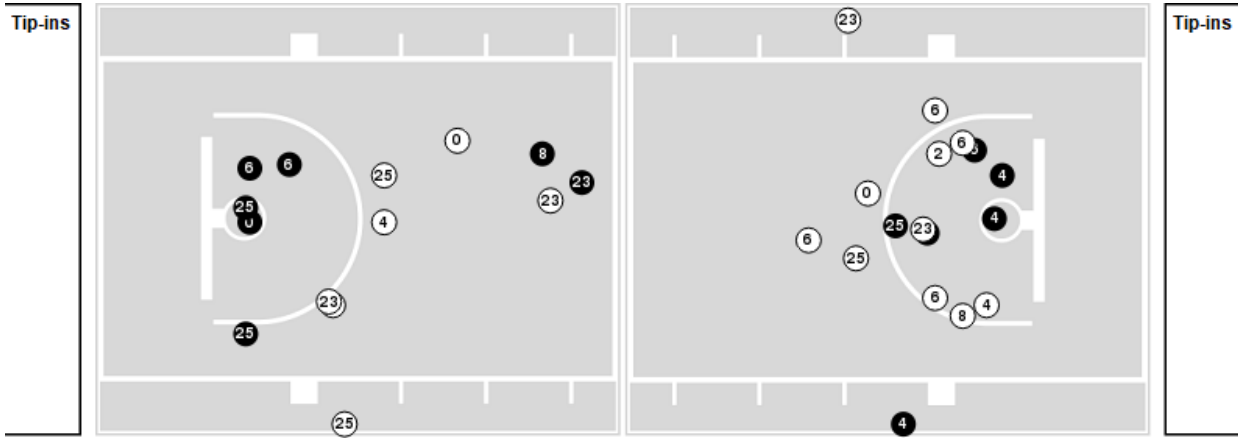
Players => 0, 1, 2, 4, 6, 7, 8, 11, 20, 23, 25, 40, 44, 45, 51, 52, 55FG Types=>AllResults=>All

Wake Forest

All Field Goals



Blow Up Chart



● Made ○ Missed N - Player Number

Wake Forest	M/A	%
Field Goals	24/63	38
2 Points	13/32	41
3 Points	11/31	35
Free Throws	10/14	71

Wake Forest	M/A	%
Points in the Paint	24 (12 / 28)	43
Fast Break Points	9 (4/4)	100
Second Chance Points	14 (7/14)	50
Effective FG%	47	



Georgia Tech at Wake Forest

03/08/25 LJVM Coliseum, Winston-Salem
2024-25 Men's Basketball

Game Time: 2:15 PM
Game Duration: 1:58
Attendance: 8,994

Officials: Ted Valentine, Lamar Simpson, Justin Porterfield

Georgia Tech

Lineup	Quarter On	Time On	Quarter Off	Time Off	Time on Court	Score	Score Diff	Reb	Stl	Tov	Ass	PPP
0- Terry L/ 1- George N/ 11- Ndongo B/ 30- Souare I/ 31- Powell D/	1	20:00	1	15:19	04:41	5-8	-3	8	0	2	1	0.5556
0- Terry L/ 1- George N/ 3- Mustaf J/ 11- Ndongo B/ 31- Powell D/	1	15:19	1	12:58	02:21	5-2	3	2	0	0	1	1.6667
0- Terry L/ 1- George N/ 3- Mustaf J/ 30- Souare I/ 31- Powell D/	1	12:58	1	11:16	01:42	0-6	-6	1	0	1	0	0.0000
0- Terry L/ 1- George N/ 3- Mustaf J/ 11- Ndongo B/ 30- Souare I/	1	11:16	1	09:36	01:40	0-3	-3	2	0	0	0	0.0000
0- Terry L/ 1- George N/ 11- Ndongo B/ 30- Souare I/ 31- Powell D/	1	09:36	1	08:49	00:47	0-0	0	1	0	1	0	0.0000
0- Terry L/ 1- George N/ 10- Sutton D/ 11- Ndongo B/ 31- Powell D/	1	08:49	1	06:03	02:46	1-2	-1	1	2	0	0	0.2049
1- George N/ 3- Mustaf J/ 11- Ndongo B/ 30- Souare I/ 31- Powell D/	1	06:03	1	02:35	03:28	4-5	-1	1	0	2	1	0.8197
0- Terry L/ 1- George N/ 3- Mustaf J/ 11- Ndongo B/ 31- Powell D/	1	02:35	1	00:47	01:47	0-5	-5	1	0	2	0	0.0000
1- George N/ 3- Mustaf J/ 10- Sutton D/ 11- Ndongo B/ 31- Powell D/	1	00:47	2	20:00	00:47	0-3	-3	0	0	0	0	0.0000
0- Terry L/ 1- George N/ 11- Ndongo B/ 30- Souare I/ 31- Powell D/	2	20:00	2	16:05	03:55	7-5	2	5	0	2	1	1.3158
0- Terry L/ 1- George N/ 3- Mustaf J/ 11- Ndongo B/ 31- Powell D/	2	16:05	2	14:01	02:04	1-8	-7	4	0	1	0	0.2907
0- Terry L/ 3- Mustaf J/ 10- Sutton D/ 11- Ndongo B/ 30- Souare I/	2	14:01	2	12:37	01:24	4-0	4	0	1	0	1	2.1277
0- Terry L/ 3- Mustaf J/ 10- Sutton D/ 30- Souare I/ 31- Powell D/	2	12:37	2	12:20	00:17	0-2	-2	0	0	0	0	0.0000
1- George N/ 3- Mustaf J/ 10- Sutton D/ 30- Souare I/ 31- Powell D/	2	12:20	2	11:27	00:53	1-3	-2	0	0	0	0	0.5319
1- George N/ 3- Mustaf J/ 10- Sutton D/ 11- Ndongo B/ 31- Powell D/	2	11:27	2	07:50	03:37	7-2	5	4	0	1	3	1.2868
1- George N/ 3- Mustaf J/ 11- Ndongo B/ 30- Souare I/ 31- Powell D/	2	07:50	2	07:16	00:34	0-0	0	1	0	1	0	0.0000
0- Terry L/ 1- George N/ 11- Ndongo B/ 30- Souare I/ 31- Powell D/	2	07:16	2	04:23	02:53	0-12	-12	2	0	2	0	0.0000
3- Mustaf J/ 10- Sutton D/ 11- Ndongo B/ 30- Souare I/ 31- Powell D/	2	04:23	2	01:53	02:30	4-2	2	4	0	0	1	1.0000
3- Mustaf J/ 10- Sutton D/ 30- Souare I/ 33- San Miguel M/ 35- Nichols E/	2	01:53	2	00:00	01:53	4-1	3	3	2	1	1	1.1628



Georgia Tech at Wake Forest

03/08/25 LJVM Coliseum, Winston-Salem
2024-25 Men's Basketball

Game Time: 2:15 PM
Game Duration: 1:58
Attendance: 8,994

Officials: Ted Valentine, Lamar Simpson, Justin Porterfield

Wake Forest

Lineup	Quarter On	Time On	Quarter Off	Time Off	Time on Court	Score	Score Diff	Reb	Stl	Tov	Ass	PPP
4- Reid E/ 6- Hildreth C/ 8- Johnson T/ 23- Sallis H/ 25- Spillers T/	1	20:00	1	15:19	04:41	8-5	3	4	2	0	2	0.8889
2- Harris J/ 4- Reid E/ 6- Hildreth C/ 8- Johnson T/ 23- Sallis H/	1	15:19	1	12:58	02:21	2-5	-3	2	0	0	1	0.8197
0- Biliew O/ 2- Harris J/ 7- Friedrichsen P/ 23- Sallis H/ 25- Spillers T/	1	12:58	1	09:36	03:22	9-0	9	5	1	0	1	1.6544
0- Biliew O/ 4- Reid E/ 6- Hildreth C/ 7- Friedrichsen P/ 23- Sallis H/	1	09:36	1	08:49	00:47	0-0	0	1	1	1	0	0.0000
0- Biliew O/ 4- Reid E/ 6- Hildreth C/ 7- Friedrichsen P/ 8- Johnson T/	1	08:49	1	07:30	01:19	0-1	-1	2	0	1	0	0.0000
4- Reid E/ 6- Hildreth C/ 8- Johnson T/ 23- Sallis H/ 25- Spillers T/	1	07:30	1	04:20	03:10	3-3	0	5	0	2	0	0.6303
2- Harris J/ 4- Reid E/ 6- Hildreth C/ 23- Sallis H/ 25- Spillers T/	1	04:20	1	01:55	02:25	6-1	5	5	2	0	1	1.5000
2- Harris J/ 4- Reid E/ 7- Friedrichsen P/ 23- Sallis H/ 25- Spillers T/	1	01:55	1	00:47	01:07	3-0	3	1	0	0	1	3.0000
2- Harris J/ 4- Reid E/ 6- Hildreth C/ 7- Friedrichsen P/ 25- Spillers T/	1	00:47	2	20:00	00:47	3-0	3	1	0	0	1	3.0000
4- Reid E/ 6- Hildreth C/ 8- Johnson T/ 23- Sallis H/ 25- Spillers T/	2	20:00	2	16:05	03:55	5-7	-2	1	2	0	1	1.0000
0- Biliew O/ 6- Hildreth C/ 8- Johnson T/ 23- Sallis H/ 25- Spillers T/	2	16:05	2	14:01	02:04	8-1	7	2	1	0	3	2.0000
0- Biliew O/ 2- Harris J/ 6- Hildreth C/ 8- Johnson T/ 25- Spillers T/	2	14:01	2	10:13	03:48	5-8	-3	2	0	2	1	0.9398
0- Biliew O/ 2- Harris J/ 6- Hildreth C/ 23- Sallis H/ 25- Spillers T/	2	10:13	2	08:57	01:16	0-4	-4	0	0	0	0	0.0000
0- Biliew O/ 2- Harris J/ 4- Reid E/ 6- Hildreth C/ 23- Sallis H/	2	08:57	2	07:50	01:07	2-0	2	3	1	0	0	1.0000
2- Harris J/ 4- Reid E/ 6- Hildreth C/ 23- Sallis H/ 25- Spillers T/	2	07:50	2	03:29	04:21	12-2	10	5	3	1	3	1.4218
2- Harris J/ 4- Reid E/ 6- Hildreth C/ 8- Johnson T/ 23- Sallis H/	2	03:29	2	01:53	01:36	2-2	0	2	0	0	0	1.0638
2- Harris J/ 6- Hildreth C/ 8- Johnson T/ 23- Sallis H/ 44- Kmety O/	2	01:53	2	01:53	00:00	1-0	1	0	0	0	0	2.2727
2- Harris J/ 6- Hildreth C/ 8- Johnson T/ 44- Kmety O/ 51- Dunn K/	2	01:53	2	01:48	00:05	0-0	0	0	0	0	0	0.0000
2- Harris J/ 8- Johnson T/ 40- Kennah R/ 44- Kmety O/ 51- Dunn K/	2	01:48	2	00:00	01:48	0-4	-4	1	0	2	0	0.0000



Georgia Tech at Wake Forest

03/08/25 LJVM Coliseum, Winston-Salem
2024-25 Men's Basketball

Officials: Ted Valentine, Lamar Simpson, Justin Porterfield

Georgia Tech

Lineup	Time	Score	Score Diff	Pts/Min	Reb	Stl	Tov	Ass	PPP
0- Terry L/ 1- George N/ 11- Ndongo B/ 30- Souare I/ 31- Powell D/	12:16	12-25	-13	0.9783	16	0	7	2	0.5629
0- Terry L/ 1- George N/ 3- Mustaf J/ 11- Ndongo B/ 31- Powell D/	06:12	6-15	-9	0.9654	7	0	3	1	0.6356
1- George N/ 3- Mustaf J/ 10- Sutton D/ 11- Ndongo B/ 31- Powell D/	04:24	7-5	2	1.5903	4	0	1	3	1.0870
1- George N/ 3- Mustaf J/ 11- Ndongo B/ 30- Souare I/ 31- Powell D/	04:02	4-5	-1	0.9917	2	0	3	1	0.6803
0- Terry L/ 1- George N/ 10- Sutton D/ 11- Ndongo B/ 31- Powell D/	02:46	1-2	-1	0.3614	1	2	0	0	0.2049
3- Mustaf J/ 10- Sutton D/ 11- Ndongo B/ 30- Souare I/ 31- Powell D/	02:30	4-2	2	1.6000	4	0	0	1	1.0000
3- Mustaf J/ 10- Sutton D/ 30- Souare I/ 33- San Miguel M/ 35- Nichols E/	01:53	4-1	3	2.1239	3	2	1	1	1.1628
0- Terry L/ 1- George N/ 3- Mustaf J/ 30- Souare I/ 31- Powell D/	01:42	0-6	-6	0.0000	1	0	1	0	0.0000
0- Terry L/ 1- George N/ 3- Mustaf J/ 11- Ndongo B/ 30- Souare I/	01:40	0-3	-3	0.0000	2	0	0	0	0.0000
0- Terry L/ 3- Mustaf J/ 10- Sutton D/ 11- Ndongo B/ 30- Souare I/	01:24	4-0	4	2.8571	0	1	0	1	2.1277
1- George N/ 3- Mustaf J/ 10- Sutton D/ 30- Souare I/ 31- Powell D/	00:53	1-3	-2	1.1321	0	0	0	0	0.5319
0- Terry L/ 3- Mustaf J/ 10- Sutton D/ 30- Souare I/ 31- Powell D/	00:17	0-2	-2	0.0000	0	0	0	0	0.0000



Georgia Tech at Wake Forest

03/08/25 LJVM Coliseum, Winston-Salem
2024-25 Men's Basketball

Officials: Ted Valentine, Lamar Simpson, Justin Porterfield

Wake Forest

Lineup	Time	Score	Score Diff	Pts/Min	Reb	Stl	Tov	Ass	PPP
4- Reid E/ 6- Hildreth C/ 8- Johnson T/ 23- Sallis H/ 25- Spillers T/	11:46	16-15	1	1.3598	10	4	2	3	0.8529
2- Harris J/ 4- Reid E/ 6- Hildreth C/ 23- Sallis H/ 25- Spillers T/	06:46	18-3	15	2.6601	10	5	1	4	1.4469
2- Harris J/ 4- Reid E/ 6- Hildreth C/ 8- Johnson T/ 23- Sallis H/	03:57	4-7	-3	1.0127	4	0	0	1	0.9259
0- Biliew O/ 2- Harris J/ 6- Hildreth C/ 8- Johnson T/ 25- Spillers T/	03:48	5-8	-3	1.3158	2	0	2	1	0.9398
0- Biliew O/ 2- Harris J/ 7- Friedrichsen P/ 23- Sallis H/ 25- Spillers T/	03:22	9-0	9	2.6733	5	1	0	1	1.6544
0- Biliew O/ 6- Hildreth C/ 8- Johnson T/ 23- Sallis H/ 25- Spillers T/	02:04	8-1	7	3.8710	2	1	0	3	2.0000
2- Harris J/ 8- Johnson T/ 40- Kennah R/ 44- Kmety O/ 51- Dunn K/	01:48	0-4	-4	0.0000	1	0	2	0	0.0000
0- Biliew O/ 4- Reid E/ 6- Hildreth C/ 7- Friedrichsen P/ 8- Johnson T/	01:19	0-1	-1	0.0000	2	0	1	0	0.0000
0- Biliew O/ 2- Harris J/ 6- Hildreth C/ 23- Sallis H/ 25- Spillers T/	01:16	0-4	-4	0.0000	0	0	0	0	0.0000
2- Harris J/ 4- Reid E/ 7- Friedrichsen P/ 23- Sallis H/ 25- Spillers T/	01:07	3-0	3	2.6510	1	0	0	1	3.0000
0- Biliew O/ 2- Harris J/ 4- Reid E/ 6- Hildreth C/ 23- Sallis H/	01:07	2-0	2	1.7910	3	1	0	0	1.0000
2- Harris J/ 4- Reid E/ 6- Hildreth C/ 7- Friedrichsen P/ 25- Spillers T/	00:47	3-0	3	3.8217	1	0	0	1	3.0000
0- Biliew O/ 4- Reid E/ 6- Hildreth C/ 7- Friedrichsen P/ 23- Sallis H/	00:47	0-0	0	0.0000	1	1	1	0	0.0000
2- Harris J/ 6- Hildreth C/ 8- Johnson T/ 44- Kmety O/ 51- Dunn K/	00:05	0-0	0	0.0000	0	0	0	0	0.0000
2- Harris J/ 6- Hildreth C/ 8- Johnson T/ 23- Sallis H/ 44- Kmety O/	00:00	1-0	1	∞	0	0	0	0	2.2727