



Officials: Clarence Armstrong, John Gaffney, Tim Clougherty

**Georgia Tech - 72**

Record: 8-8 (1-5)

| NO.           | Name                   | Min     | FG    | 3P   | FT    | Rebounds |    |     | Fouls |    | TP | AS | TO | ST | Blocks |    | +/- |
|---------------|------------------------|---------|-------|------|-------|----------|----|-----|-------|----|----|----|----|----|--------|----|-----|
|               |                        |         | M-A   | M-A  | M-A   | OR       | DR | TOT | PF    | FD |    |    |    |    | BS     | BA |     |
| 4             | Ja'von Franklin        | F 44:57 | 5-7   | 0-0  | 2-4   | 6        | 6  | 12  | 1     | 3  | 12 | 3  | 0  | 1  | 4      | 0  | 2   |
| 24            | Rodney Howard          | C 13:02 | 1-3   | 0-0  | 0-0   | 2        | 1  | 3   | 2     | 0  | 2  | 0  | 1  | 1  | 0      | 0  | -12 |
| 0             | Lance Terry            | G 34:55 | 1-9   | 0-4  | 2-2   | 0        | 2  | 2   | 3     | 3  | 4  | 1  | 0  | 1  | 0      | 3  | -13 |
| 3             | Dallan "Deebo" Coleman | G 27:11 | 2-8   | 0-6  | 2-2   | 0        | 4  | 4   | 2     | 3  | 6  | 1  | 1  | 0  | 0      | 0  | -3  |
| 13            | Miles Kelly            | G 39:06 | 3-10  | 3-7  | 2-2   | 1        | 2  | 3   | 2     | 1  | 11 | 1  | 4  | 3  | 0      | 0  | 2   |
| 5             | Devon Smith            | 36:10   | 7-12  | 2-4  | 0-0   | 2        | 8  | 10  | 4     | 4  | 16 | 7  | 4  | 0  | 1      | 2  | 7   |
| 11            | Tristan Maxwell        | 11:01   | 1-5   | 1-3  | 0-0   | 0        | 2  | 2   | 2     | 0  | 3  | 0  | 1  | 0  | 0      | 0  | 11  |
| 1             | Kyle Sturdivant        | 18:38   | 7-12  | 2-3  | 2-2   | 0        | 2  | 2   | 2     | 1  | 18 | 1  | 0  | 1  | 0      | 1  | 1   |
| Team          |                        |         |       |      |       | 3        | 1  | 4   |       |    | 0  |    | 3  |    |        |    |     |
| <b>Totals</b> |                        |         | 27-66 | 8-27 | 10-12 | 14       | 28 | 42  | 18    | 15 | 72 | 14 | 14 | 7  | 5      | 6  | -1  |

Technical Fouls::NONE

| Shooting By Period |       |       |
|--------------------|-------|-------|
| 1st FG%            | 12-32 | 37.5% |
| 3PT%               | 4-15  | 26.7% |
| FT%                | 1-2   | 50%   |
| 2nd FG%            | 13-27 | 48.1% |
| 3PT%               | 3-9   | 33.3% |
| FT%                | 7-8   | 87.5% |
| OT FG%             | 2-7   | 28.6% |
| 3PT%               | 1-3   | 33.3% |
| FT%                | 2-2   | 100%  |
| GM FG%             | 27-66 | 40.9% |
| 3PT%               | 8-27  | 29.6% |
| FT%                | 10-12 | 83.3% |

Dead Ball Rebounds: 1, 0

**Notre Dame - 73**

Record: 9-8 (1-5)

| NO.           | Name           | Min     | FG    | 3P   | FT    | Rebounds |    |     | Fouls |    | TP | AS | TO | ST | Blocks |    | +/- |
|---------------|----------------|---------|-------|------|-------|----------|----|-----|-------|----|----|----|----|----|--------|----|-----|
|               |                |         | M-A   | M-A  | M-A   | OR       | DR | TOT | PF    | FD |    |    |    |    | BS     | BA |     |
| 14            | Nate Laszewski | F 41:41 | 4-8   | 1-4  | 5-6   | 0        | 7  | 7   | 3     | 6  | 14 | 1  | 2  | 2  | 1      | 1  | -2  |
| 3             | Trey Wertz     | G 36:31 | 2-7   | 2-4  | 0-2   | 0        | 4  | 4   | 3     | 1  | 6  | 3  | 0  | 1  | 1      | 0  | 7   |
| 5             | Cormac Ryan    | G 39:39 | 5-12  | 1-4  | 0-0   | 1        | 1  | 2   | 1     | 2  | 11 | 3  | 1  | 2  | 2      | 2  | 7   |
| 10            | Marcus Hammond | G 19:55 | 2-6   | 2-5  | 1-1   | 0        | 0  | 0   | 1     | 1  | 7  | 0  | 2  | 0  | 1      | 0  | -14 |
| 23            | Dane Goodwin   | G 41:34 | 6-11  | 1-3  | 6-7   | 2        | 10 | 12  | 2     | 5  | 19 | 2  | 3  | 1  | 1      | 1  | -3  |
| 1             | JJ Starling    | 38:22   | 6-12  | 2-4  | 2-3   | 1        | 2  | 3   | 4     | 3  | 16 | 3  | 4  | 1  | 0      | 0  | 8   |
| 25            | Matt Zona      | 03:11   | 0-0   | 0-0  | 0-0   | 0        | 0  | 0   | 1     | 0  | 0  | 0  | 1  | 0  | 0      | 0  | 4   |
| 13            | Dom Campbell   | 04:07   | 0-3   | 0-0  | 0-0   | 2        | 1  | 3   | 0     | 0  | 0  | 0  | 0  | 0  | 0      | 1  | -2  |
| Team          |                |         |       |      |       | 1        | 1  | 2   |       |    | 0  |    | 1  |    |        |    |     |
| <b>Totals</b> |                |         | 25-59 | 9-24 | 14-19 | 7        | 26 | 33  | 15    | 18 | 73 | 12 | 14 | 7  | 6      | 5  | 1   |

Technical Fouls::NONE

| Shooting By Period |       |        |
|--------------------|-------|--------|
| 1st FG%            | 9-25  | 36.0%  |
| 3PT%               | 4-9   | 44.4%  |
| FT%                | 8-12  | 66.7%  |
| 2nd FG%            | 14-30 | 46.7%  |
| 3PT%               | 3-13  | 23.1%  |
| FT%                | 4-5   | 80%    |
| OT FG%             | 2-4   | 50.0%  |
| 3PT%               | 2-2   | 100.0% |
| FT%                | 2-2   | 100%   |
| GM FG%             | 25-59 | 42.4%  |
| 3PT%               | 9-24  | 37.5%  |
| FT%                | 14-19 | 73.7%  |

Dead Ball Rebounds: 4, 0

|                  | GT            | ND             |
|------------------|---------------|----------------|
| Biggest lead     | 7 (1st 17:02) | 9 (2nd 16:06)  |
| Best Scoring Run | 8 (2nd 10:31) | 11 (1st 12:55) |
| Lead Changes     | 13            |                |
| Times Tied       | 10            |                |
| Time with Lead   | 20:00         | 16:37          |

| Points from   | GT | ND |
|---------------|----|----|
| Turnovers     | 17 | 18 |
| Paint         | 32 | 28 |
| Second Chance | 14 | 6  |
| Fast Breaks   | 6  | 4  |
| Bench         | 37 | 16 |

|    | Period by Period Scoring |     |     |     |
|----|--------------------------|-----|-----|-----|
|    | 1st                      | 2nd | OT1 | TOT |
| GT | 29                       | 36  | 7   | 72  |
| ND | 30                       | 35  | 8   | 73  |



**Period 1**

**Quarter Starters:**

|           |           |             |              |                |              |
|-----------|-----------|-------------|--------------|----------------|--------------|
| <b>ND</b> | 3 Wertz T | 5 Ryan C    | 10 Hammond M | 14 Laszewski N | 23 Goodwin D |
| <b>GT</b> | 0 Terry L | 3 Coleman D | 4 Franklin J | 13 Kelly M     | 24 Howard R  |

| Game Time | ND  | Score        | Diff      | GT   |
|-----------|---|--------------|-----------|--|
| 20:00     | 14 LASZEWSKI N jumpball won                                     |              |           | 4 FRANKLIN J jumpball lost                                     |
| 19:29     | 3 WERTZ T 2pt FG outside the paint, turnaround jump shot missed |              |           |  |
| 19:26     |   |              |           | 13 KELLY M defensive rebound (1)                               |
| 19:09     |   | <b>0-2</b>   | <b>-2</b> | 4 FRANKLIN J 2pt FG in the paint, hook shot made (2)           |
| 18:41     | 10 HAMMOND M 2pt FG in the paint, driving layup missed          |              |           |  |
| 18:38     | 23 GOODWIN D offensive rebound (1)                              |              |           |  |
| 18:38     | 23 GOODWIN D 2pt FG second chance in the paint, layup blocked   |              |           |  |
| 18:38     |   |              |           | 4 FRANKLIN J block (1)   |
| 18:38     | 23 GOODWIN D offensive rebound (2)                              |              |           |  |
| 18:38     | 23 GOODWIN D foul drawn (1)                                     |              |           | 0 TERRY L foul shooting (1 - 1)                                |
| 18:37     | 23 GOODWIN D free throw 1 - 2 made (1)                          | <b>1-2</b>   | <b>-1</b> |  |
| 18:37     | 23 GOODWIN D free throw 2 - 2 made (2)                          | <b>2-2</b>   | <b>0</b>  |  |
| 18:19     |   |              |           | 24 HOWARD R 2pt FG in the paint, hook shot missed              |
| 18:16     |   |              |           | 4 FRANKLIN J offensive rebound (1)                             |
| 18:15     |   | <b>2-4</b>   | <b>-2</b> | 4 FRANKLIN J 2pt FG second chance in the paint, layup made (4) |
| 17:51     | 5 RYAN C 3pt FG , jump shot missed                              |              |           |  |
| 17:48     |   |              |           | 0 TERRY L defensive rebound (1)                                |
| 17:25     |   | <b>2-7</b>   | <b>-5</b> | 13 KELLY M 3pt FG , jump shot made (3)                         |
| 17:25     |   |              |           | 4 FRANKLIN J assist (1)  |
| 17:14     | 10 HAMMOND M 3pt FG , jump shot missed                          |              |           |  |
| 17:11     |   |              |           | 3 COLEMAN D defensive rebound (1)                              |
| 17:02     |   | <b>2-9</b>   | <b>-7</b> | 24 HOWARD R 2pt FG in the paint, hook shot made (2)            |
| 17:02     |   |              |           | 3 COLEMAN D assist (1)   |
| 16:40     | 10 HAMMOND M 3pt FG , jump shot made (3)                        | <b>5-9</b>   | <b>-4</b> |  |
| 16:40     | 3 WERTZ T assist (1)  |              |           |  |
| 16:13     |   | <b>5-11</b>  | <b>-6</b> | 3 COLEMAN D 2pt FG in the paint, turnaround jump shot made (2) |
| 15:47     | 23 GOODWIN D 2pt FG in the paint, driving layup made (4)        | <b>7-11</b>  | <b>-4</b> |  |
| 15:27     | 14 LASZEWSKI N steal (1)  |              |           | 3 COLEMAN D turnover bad pass (1)                              |
| 15:20     | 10 HAMMOND M 3pt FG from turnover, jump shot made (6)           | <b>10-11</b> | <b>-1</b> |  |
| 15:20     | 14 LASZEWSKI N assist (1)                                       |              |           |  |
| 15:20     | 10 HAMMOND M foul drawn (1)                                     |              |           | 3 COLEMAN D foul shooting (1 - 2)                              |
| 15:20     | Timeout media   |              |           |  |
| 15:20     | 3 WERTZ T substitution out                                      |              |           |  |
| 15:20     | 5 RYAN C substitution out                                       |              |           |  |
| 15:20     | 1 STARLING J substitution in                                    |              |           |  |
| 15:20     | 25 ZONA M substitution in                                       |              |           |  |
| 15:20     | 10 HAMMOND M free throw 1 - 1 made (7)                          | <b>11-11</b> | <b>0</b>  |  |
| 15:03     |   |              |           | 13 KELLY M 3pt FG , jump shot missed                           |
| 14:59     | 23 GOODWIN D defensive rebound (3)                              |              |           |  |
| 14:40     | 25 ZONA M foul offensive (1 - 1)                                |              |           | 3 COLEMAN D foul drawn (1)                                     |



Official Basketball Play by Play - First Half  
**Georgia Tech at Notre Dame**  
 01/10/23 Purcell Pavilion at the Joyce Center, Notre Dame  
 2022-23 Men's Basketball

**Game Time:** 7:00 PM  
**Game Duration:** 2:17  
**Attendance:** 4,502

**Officials:** Clarence Armstrong, John Gaffney, Tim Clougherty

| Game Time | ND   | Score        | Diff     | GT  |
|-----------|--|--------------|----------|---|
| 14:40     | 25 ZONA M turnover offensive (1)   |              |          |   |
| 14:40     | 10 HAMMOND M substitution out  |              |          |   |
| 14:40     | 23 GOODWIN D substitution out  |              |          |   |
| 14:40     | 3 WERTZ T substitution in  |              |          |   |
| 14:40     | 5 RYAN C substitution in   |              |          |   |
| 14:21     |  |              |          | 3 COLEMAN D 3pt FG from turnover, jump shot missed                            |
| 14:17     |  |              |          | 24 HOWARD R offensive rebound (1)   |
| 14:15     |  |              |          | 24 HOWARD R 2pt FG from turnover second chance in the paint, hook shot missed |
| 14:13     | defensive rebound (4)  |              |          |   |
| 13:54     | 1 STARLING J 3pt FG , jump shot made (3)                                 | <b>14-11</b> | <b>3</b> |   |
| 13:54     | 5 RYAN C assist (1)  |              |          |   |
| 13:28     | 14 LASZEWSKI N substitution out  |              |          |   |
| 13:28     | 23 GOODWIN D substitution in   |              |          |   |
| 13:28     |  |              |          | 3 COLEMAN D substitution out  |
| 13:28     |  |              |          | 5 SMITH D substitution in   |
| 13:19     |  |              |          | 0 TERRY L 2pt FG outside the paint, step back jump shot blocked               |
| 13:19     | 5 RYAN C block (1)   |              |          |   |
| 13:17     |  |              |          | offensive rebound (6)   |
| 13:17     |  |              |          | turnover shot clock (2)   |
| 13:17     | 25 ZONA M substitution out   |              |          |   |
| 13:17     | 10 HAMMOND M substitution in   |              |          |   |
| 13:00     | 5 RYAN C 2pt FG from turnover in the paint, driving layup blocked        |              |          |   |
| 13:00     |  |              |          | 5 SMITH D block (1)   |
| 12:56     | 5 RYAN C offensive rebound (1)   |              |          |   |
| 12:55     | 5 RYAN C 2pt FG from turnover second chance in the paint, layup made (2) | <b>16-11</b> | <b>5</b> |   |
| 12:48     | 3 WERTZ T steal (1)  |              |          | 5 SMITH D turnover bad pass (1)   |
| 12:44     | 3 WERTZ T foul drawn (1)   |              |          | 5 SMITH D foul shooting (1 - 3)   |
| 12:44     | 3 WERTZ T free throw fast break 1 - 2 missed                             |              |          |   |
| 12:44     | offensive dead ball rebound (1)  |              |          |   |
| 12:44     | 3 WERTZ T free throw fast break 2 - 2 missed                             |              |          |   |
| 12:42     |  |              |          | 5 SMITH D defensive rebound (1)   |
| 12:38     | 5 RYAN C foul drawn (1)  |              |          | 24 HOWARD R foul offensive (1 - 4)  |
| 12:38     |  |              |          | 24 HOWARD R turnover offensive (1)  |
| 12:38     |  |              |          | 24 HOWARD R substitution out  |
| 12:38     |  |              |          | 3 COLEMAN D substitution in   |
| 12:23     | 1 STARLING J 3pt FG from turnover, jump shot missed                      |              |          |   |
| 12:20     |  |              |          | 3 COLEMAN D defensive rebound (2)   |
| 12:10     |  |              |          | 5 SMITH D 2pt FG outside the paint, pull up jump shot missed                  |
| 12:07     | 5 RYAN C defensive rebound (2)   |              |          |   |
| 11:44     | 10 HAMMOND M 3pt FG , jump shot missed                                   |              |          |   |
| 11:44     |  |              |          | defensive rebound (9)   |
| 11:44     |  |              |          | Timeout media   |
| 11:44     | 3 WERTZ T substitution out   |              |          |   |
| 11:44     | 14 LASZEWSKI N substitution in   |              |          |   |
| 11:13     |  |              |          | 0 TERRY L 2pt FG outside the paint, jump shot blocked                         |
| 11:13     | 10 HAMMOND M block (1)   |              |          |   |



Official Basketball Play by Play - First Half  
**Georgia Tech at Notre Dame**  
 01/10/23 Purcell Pavilion at the Joyce Center, Notre Dame  
 2022-23 Men's Basketball

**Game Time:** 7:00 PM  
**Game Duration:** 2:17  
**Attendance:** 4,502

**Officials:** Clarence Armstrong, John Gaffney, Tim Clougherty

| Game Time | ND  | Score        | Diff     | GT   |
|-----------|---|--------------|----------|--|
| 11:13     |   |              |          | offensive dead ball rebound (1)  |
| 11:13     |   |              |          | turnover shot clock (5)  |
| 11:01     | 5 RYAN C 2pt FG from turnover outside the paint, jump shot missed |              |          |  |
| 10:59     |   |              |          | 3 COLEMAN D defensive rebound (3)  |
| 10:37     |   |              |          | 3 COLEMAN D 3pt FG , jump shot missed  |
| 10:34     |   |              |          | 4 FRANKLIN J offensive rebound (2)   |
| 10:20     |   |              |          | 13 KELLY M 2pt FG second chance outside the paint, turnaround jump shot missed   |
| 10:16     | 23 GOODWIN D defensive rebound (4)                                |              |          |  |
| 10:00     | 10 HAMMOND M foul offensive (1 - 2)                               |              |          | 5 SMITH D foul drawn (1)   |
| 10:00     | 10 HAMMOND M turnover offensive (1)                               |              |          |  |
| 10:00     |   |              |          | 13 KELLY M substitution out  |
| 10:00     |   |              |          | 11 MAXWELL T substitution in   |
| 09:42     |   | <b>16-14</b> | <b>2</b> | 5 SMITH D 3pt FG from turnover, jump shot made (3)                               |
| 09:42     |   |              |          | 0 TERRY L assist (1)   |
| 09:22     | 23 GOODWIN D foul drawn (2)                                       |              |          | 5 SMITH D foul shooting (2 - 5)  |
| 09:22     | 23 GOODWIN D free throw 1 - 2 missed                              |              |          |  |
| 09:22     | offensive dead ball rebound (2)                                   |              |          |  |
| 09:22     | 10 HAMMOND M substitution out                                     |              |          |  |
| 09:22     | 3 WERTZ T substitution in   |              |          |  |
| 09:22     | 23 GOODWIN D free throw 2 - 2 made (5)                            | <b>17-14</b> | <b>3</b> |  |
| 09:08     | 3 WERTZ T foul personal (1 - 3)                                   |              |          | 5 SMITH D foul drawn (2)   |
| 08:56     |   |              |          | 0 TERRY L 3pt FG , jump shot missed  |
| 08:53     | 3 WERTZ T defensive rebound (1)                                   |              |          |  |
| 08:48     | 14 LASZEWSKI N substitution out                                   |              |          |  |
| 08:48     | 25 ZONA M substitution in   |              |          |  |
| 08:35     | 23 GOODWIN D foul drawn (3)                                       |              |          | 5 SMITH D foul personal (3 - 6)  |
| 08:26     | 1 STARLING J 2pt FG outside the paint, floating jump shot missed  |              |          |  |
| 08:22     |   |              |          | 0 TERRY L defensive rebound (2)  |
| 08:19     |   |              |          | 0 TERRY L 2pt FG in the paint, driving layup blocked                             |
| 08:19     | 23 GOODWIN D block (1)  |              |          |  |
| 08:19     |   |              |          | offensive rebound (13)   |
| 08:07     |   |              |          | 0 TERRY L 3pt FG second chance, jump shot missed                                 |
| 08:04     | 1 STARLING J defensive rebound (1)                                |              |          |  |
| 07:40     | 1 STARLING J foul offensive (1 - 4)                               |              |          | 5 SMITH D foul drawn (3)   |
| 07:40     | 1 STARLING J turnover offensive (1)                               |              |          |  |
| 07:40     |   |              |          | Timeout media  |
| 07:40     | 5 RYAN C substitution out   |              |          |  |
| 07:40     | 25 ZONA M substitution out  |              |          |  |
| 07:40     | 10 HAMMOND M substitution in                                      |              |          |  |
| 07:40     | 14 LASZEWSKI N substitution in                                    |              |          |  |
| 07:40     |   |              |          | 0 TERRY L substitution out   |
| 07:40     |   |              |          | 13 KELLY M substitution in   |
| 07:23     |   |              |          | 11 MAXWELL T 2pt FG from turnover outside the paint, turnaround jump shot missed |
| 07:19     | 3 WERTZ T defensive rebound (2)                                   |              |          |  |
| 07:12     | 10 HAMMOND M turnover bad pass (2)                                |              |          | 13 KELLY M steal (1)   |
| 07:07     |   |              |          | 13 KELLY M 3pt FG from turnover, jump shot missed                                |



Official Basketball Play by Play - First Half  
**Georgia Tech at Notre Dame**  
 01/10/23 Purcell Pavilion at the Joyce Center, Notre Dame  
 2022-23 Men's Basketball

**Game Time:** 7:00 PM  
**Game Duration:** 2:17  
**Attendance:** 4,502

**Officials:** Clarence Armstrong, John Gaffney, Tim Clougherty

| Game Time | ND   | Score        | Diff      | GT   |
|-----------|--|--------------|-----------|--|
| 07:04     |  |              |           | 4 FRANKLIN J offensive rebound (3)                               |
| 07:03     |  | <b>17-17</b> | <b>0</b>  | 5 SMITH D 3pt FG from turnover second chance, jump shot made (6) |
| 07:03     |  |              |           | 4 FRANKLIN J assist (2)  |
| 06:40     | 23 GOODWIN D foul drawn (4)                                    |              |           | 11 MAXWELL T foul shooting (1 - 7)                               |
| 06:40     | 23 GOODWIN D free throw 1 - 2 made (6)                         | <b>18-17</b> | <b>1</b>  |  |
| 06:40     | 1 STARLING J substitution out                                  |              |           |  |
| 06:40     | 3 WERTZ T substitution out                                     |              |           |  |
| 06:40     | 5 RYAN C substitution in                                       |              |           |  |
| 06:40     | 13 CAMPBELL D substitution in                                  |              |           |  |
| 06:40     | 23 GOODWIN D free throw 2 - 2 made (7)                         | <b>19-17</b> | <b>2</b>  |  |
| 06:34     |  | <b>19-20</b> | <b>-1</b> | 13 KELLY M 3pt FG , jump shot made (6)                           |
| 06:34     |  |              |           | 5 SMITH D assist (1)   |
| 06:14     | 13 CAMPBELL D 2pt FG in the paint, hook shot missed            |              |           |  |
| 06:11     | 13 CAMPBELL D offensive rebound (1)                            |              |           |  |
| 06:10     | 13 CAMPBELL D 2pt FG second chance in the paint, layup missed  |              |           |  |
| 06:08     | 13 CAMPBELL D offensive rebound (2)                            |              |           |  |
| 06:07     | 13 CAMPBELL D 2pt FG second chance in the paint, layup blocked |              |           |  |
| 06:07     |  |              |           | 4 FRANKLIN J block (2)   |
| 06:07     |  |              |           | 4 FRANKLIN J defensive rebound (4)                               |
| 06:00     |  | <b>19-22</b> | <b>-3</b> | 4 FRANKLIN J 2pt FG in the paint, layup made (6)                 |
| 06:00     |  |              |           | 13 KELLY M assist (1)  |
| 05:42     | 14 LASZEWSKI N foul drawn (1)                                  |              |           | 4 FRANKLIN J foul shooting (1 - 8)                               |
| 05:42     | 14 LASZEWSKI N free throw 1 - 2 missed                         |              |           |  |
| 05:42     | offensive dead ball rebound (3)                                |              |           |  |
| 05:42     | 10 HAMMOND M substitution out                                  |              |           |  |
| 05:42     | 3 WERTZ T substitution in                                      |              |           |  |
| 05:42     | 14 LASZEWSKI N free throw 2 - 2 made (1)                       | <b>20-22</b> | <b>-2</b> |  |
| 05:27     | 14 LASZEWSKI N foul shooting (1 - 5)                           |              |           | 4 FRANKLIN J foul drawn (1)                                      |
| 05:27     |  | <b>20-23</b> | <b>-3</b> | 4 FRANKLIN J free throw 1 - 2 made (7)                           |
| 05:27     | 13 CAMPBELL D substitution out                                 |              |           |  |
| 05:27     | 1 STARLING J substitution in                                   |              |           |  |
| 05:27     |  |              |           | 4 FRANKLIN J free throw 2 - 2 missed                             |
| 05:26     | 23 GOODWIN D defensive rebound (5)                             |              |           |  |
| 04:59     | 5 RYAN C 2pt FG outside the paint, pull up jump shot made (4)  | <b>22-23</b> | <b>-1</b> |  |
| 04:37     |  |              |           | 11 MAXWELL T 3pt FG , jump shot missed                           |
| 04:33     | 23 GOODWIN D defensive rebound (6)                             |              |           |  |
| 04:30     | 1 STARLING J turnover out of bounds (2)                        |              |           |  |
| 04:30     |  |              |           | 11 MAXWELL T substitution out                                    |
| 04:30     |  |              |           | 0 TERRY L substitution in  |
| 04:08     |  |              |           | 5 SMITH D 3pt FG from turnover, jump shot missed                 |
| 04:04     |  |              |           | 4 FRANKLIN J offensive rebound (5)                               |
| 04:03     |  |              |           | 3 COLEMAN D 3pt FG from turnover second chance, jump shot missed |
| 03:59     | 14 LASZEWSKI N defensive rebound (1)                           |              |           |  |
| 03:43     | 3 WERTZ T 2pt FG outside the paint, pull up jump shot missed   |              |           |  |
| 03:39     |  |              |           | 5 SMITH D defensive rebound (2)                                  |
| 03:35     |  |              |           | 5 SMITH D 2pt FG in the paint, layup blocked                     |



Official Basketball Play by Play - First Half  
**Georgia Tech at Notre Dame**  
 01/10/23 Purcell Pavilion at the Joyce Center, Notre Dame  
 2022-23 Men's Basketball

**Game Time:** 7:00 PM  
**Game Duration:** 2:17  
**Attendance:** 4,502

**Officials:** Clarence Armstrong, John Gaffney, Tim Clougherty

| Game Time            | ND  | Score        | Diff      | GT   |
|----------------------|---|--------------|-----------|--|
| 03:35                | 3 WERTZ T block (1)   |              |           |  |
| 03:31                | 23 GOODWIN D defensive rebound (7)                            |              |           |  |
| 03:29                | 23 GOODWIN D turnover bad pass (1)                            |              |           | 0 TERRY L steal (1)  |
| 03:26                |   | <b>22-25</b> | <b>-3</b> | 0 TERRY L 2pt FG fast break from turnover in the paint, layup made (2) |
| 03:01                | 14 LASZEWSKI N 2pt FG in the paint, dunk, made (3)            | <b>24-25</b> | <b>-1</b> |  |
| 03:01                | 5 RYAN C assist (2)   |              |           |  |
| 03:01                | 14 LASZEWSKI N foul drawn (2)                                 |              |           | 0 TERRY L foul shooting (2 - 9)  |
| 03:01                | Timeout media   |              |           |  |
| 03:01                | 14 LASZEWSKI N free throw 1 - 1 made (4)                      | <b>25-25</b> | <b>0</b>  |  |
| 02:42                |   |              |           | 13 KELLY M 3pt FG , jump shot missed                                   |
| 02:37                | 23 GOODWIN D defensive rebound (8)                            |              |           |  |
| 02:18                | 1 STARLING J turnover bad pass (3)                            |              |           | 4 FRANKLIN J steal (1)   |
| 02:18                | 14 LASZEWSKI N foul personal (2 - 6)                          |              |           | 4 FRANKLIN J foul drawn (2)  |
| 01:50                |   | <b>25-27</b> | <b>-2</b> | 3 COLEMAN D 2pt FG from turnover in the paint, layup made (4)          |
| 01:50                |   |              |           | 5 SMITH D assist (2)   |
| 01:25                | 23 GOODWIN D 2pt FG in the paint, turnaround jump shot missed |              |           |  |
| 01:21                |   |              |           | 4 FRANKLIN J defensive rebound (6)                                     |
| 01:16                |   |              |           | 3 COLEMAN D 3pt FG , jump shot missed                                  |
| 01:12                | 14 LASZEWSKI N defensive rebound (2)                          |              |           |  |
| 00:59                | 23 GOODWIN D 3pt FG , jump shot missed                        |              |           |  |
| 00:56                |   |              |           | 13 KELLY M defensive rebound (2)                                       |
| 00:49                |   | <b>25-29</b> | <b>-4</b> | 5 SMITH D 2pt FG in the paint, driving layup made (8)                  |
| 00:21                | 5 RYAN C 2pt FG in the paint, jump shot made (6)              | <b>27-29</b> | <b>-2</b> |  |
| 00:12                |   |              |           | Timeout 30 Sec   |
| 00:12                |   |              |           | 5 SMITH D substitution out   |
| 00:12                |   |              |           | 11 MAXWELL T substitution in   |
| 00:03                | 14 LASZEWSKI N foul drawn (3)                                 |              |           | 13 KELLY M foul offensive (1 - 10)                                     |
| 00:03                |   |              |           | 13 KELLY M turnover offensive (1)                                      |
| 00:03                | Timeout 30 Sec  |              |           |  |
| 00:03                |   |              |           | 4 FRANKLIN J substitution out  |
| 00:03                |   |              |           | 13 KELLY M substitution out  |
| 00:03                |   |              |           | 1 STURDIVANT K substitution in   |
| 00:03                |   |              |           | 24 HOWARD R substitution in  |
| 00:00                | 1 STARLING J 3pt FG from turnover, jump shot made (6)         | <b>30-29</b> | <b>1</b>  |  |
| <b>END OF PERIOD</b> |   |              |           |  |
| <b>ND 30-29 GT</b>   |   |              |           |  |



Officials: Clarence Armstrong, John Gaffney, Tim Clougherty

Georgia Tech - 29

| NO.           | Name                   | Min     | FG    | 3P   | FT  | Rebounds |    |     | Fouls |    | TP | AS | TO | ST | Blocks |    | +/- |
|---------------|------------------------|---------|-------|------|-----|----------|----|-----|-------|----|----|----|----|----|--------|----|-----|
|               |                        |         | M-A   | M-A  | M-A | OR       | DR | TOT | PF    | FD |    |    |    |    | BS     | BA |     |
| 4             | Ja'von Franklin        | F 19:57 | 3-3   | 0-0  | 1-2 | 4        | 2  | 6   | 1     | 2  | 7  | 2  | 0  | 1  | 2      | 0  | 2   |
| 24            | Rodney Howard          | C 07:25 | 1-3   | 0-0  | 0-0 | 1        | 0  | 1   | 1     | 0  | 2  | 0  | 1  | 0  | 0      | 0  | -8  |
| 0             | Lance Terry            | G 16:50 | 1-6   | 0-2  | 0-0 | 0        | 2  | 2   | 2     | 0  | 2  | 1  | 0  | 1  | 0      | 3  | -5  |
| 3             | Dallan "Deebo" Coleman | G 19:10 | 2-6   | 0-4  | 0-0 | 0        | 3  | 3   | 1     | 1  | 4  | 1  | 1  | 0  | 0      | 0  | 1   |
| 13            | Miles Kelly            | G 17:37 | 2-6   | 2-5  | 0-0 | 0        | 2  | 2   | 1     | 0  | 6  | 1  | 1  | 1  | 0      | 0  | 0   |
| 5             | Deivon Smith           | 13:16   | 3-6   | 2-3  | 0-0 | 0        | 2  | 2   | 3     | 3  | 8  | 2  | 1  | 0  | 1      | 1  | 5   |
| 11            | Tristan Maxwell        | 05:42   | 0-2   | 0-1  | 0-0 | 0        | 0  | 0   | 1     | 0  | 0  | 0  | 0  | 0  | 0      | 0  | 3   |
| 1             | Kyle Sturdivant        | 00:03   | 0-0   | 0-0  | 0-0 | 0        | 0  | 0   | 0     | 0  | 0  | 0  | 0  | 0  | 0      | 0  | -3  |
| Team          |                        |         |       |      |     | 2        | 1  | 3   |       |    | 0  |    | 2  |    |        |    |     |
| <b>Totals</b> |                        |         | 12-32 | 4-15 | 1-2 | 7        | 12 | 19  | 10    | 6  | 29 | 7  | 6  | 3  | 3      | 4  | -1  |

| Shooting By Period |       |       |
|--------------------|-------|-------|
| 1st FG%            | 12-32 | 37.5% |
| 3PT%               | 4-15  | 26.7% |
| FT%                | 1-2   | 50%   |
| GM FG%             | 12-32 | 37.5% |
| 3PT%               | 4-15  | 26.7% |
| FT%                | 1-2   | 50.0% |

Dead Ball Rebounds: 1, 0

Technical Fouls::NONE

Notre Dame - 30

| NO.           | Name           | Min     | FG   | 3P  | FT   | Rebounds |    |     | Fouls |    | TP | AS | TO | ST | Blocks |    | +/- |
|---------------|----------------|---------|------|-----|------|----------|----|-----|-------|----|----|----|----|----|--------|----|-----|
|               |                |         | M-A  | M-A | M-A  | OR       | DR | TOT | PF    | FD |    |    |    |    | BS     | BA |     |
| 14            | Nate Laszewski | F 17:08 | 1-1  | 0-0 | 2-3  | 0        | 2  | 2   | 2     | 3  | 4  | 1  | 0  | 1  | 0      | 0  | -1  |
| 3             | Trey Wertz     | G 16:00 | 0-2  | 0-0 | 0-2  | 0        | 2  | 2   | 1     | 1  | 0  | 1  | 0  | 1  | 1      | 0  | 7   |
| 5             | Cormac Ryan    | G 18:20 | 3-6  | 0-1 | 0-0  | 1        | 1  | 2   | 0     | 1  | 6  | 2  | 0  | 0  | 1      | 1  | 2   |
| 10            | Marcus Hammond | G 11:13 | 2-5  | 2-4 | 1-1  | 0        | 0  | 0   | 1     | 1  | 7  | 0  | 2  | 0  | 1      | 0  | -7  |
| 23            | Dane Goodwin   | G 18:48 | 1-4  | 0-1 | 5-6  | 2        | 6  | 8   | 0     | 4  | 7  | 0  | 1  | 0  | 1      | 1  | -2  |
| 1             | JJ Starling    | 14:07   | 2-4  | 2-3 | 0-0  | 0        | 1  | 1   | 1     | 0  | 6  | 0  | 3  | 0  | 0      | 0  | 6   |
| 25            | Matt Zona      | 03:11   | 0-0  | 0-0 | 0-0  | 0        | 0  | 0   | 1     | 0  | 0  | 0  | 1  | 0  | 0      | 0  | 4   |
| 13            | Dom Campbell   | 01:13   | 0-3  | 0-0 | 0-0  | 2        | 0  | 2   | 0     | 0  | 0  | 0  | 0  | 0  | 0      | 1  | -4  |
| Team          |                |         |      |     |      | 0        | 1  | 1   |       |    | 0  |    | 0  |    |        |    |     |
| <b>Totals</b> |                |         | 9-25 | 4-9 | 8-12 | 5        | 13 | 18  | 6     | 10 | 30 | 4  | 7  | 2  | 4      | 3  | 1   |

| Shooting By Period |      |       |
|--------------------|------|-------|
| 1st FG%            | 9-25 | 36.0% |
| 3PT%               | 4-9  | 44.4% |
| FT%                | 8-12 | 66.7% |
| GM FG%             | 9-25 | 36.0% |
| 3PT%               | 4-9  | 44.4% |
| FT%                | 8-12 | 66.7% |

Dead Ball Rebounds: 3, 0

Technical Fouls::NONE

|                  | GT                        | ND                         |
|------------------|---------------------------|----------------------------|
| Biggest lead     | 7 (1 <sup>st</sup> 17:02) | 5 (1 <sup>st</sup> 12:55)  |
| Best Scoring Run | 7 (1 <sup>st</sup> 17:02) | 11 (1 <sup>st</sup> 12:55) |
| Lead Changes     | 3                         |                            |
| Times Tied       | 4                         |                            |
| Time with Lead   | 08:50                     | 06:57                      |

| Points from   | GT | ND |
|---------------|----|----|
| Turnovers     | 10 | 9  |
| Paint         | 16 | 8  |
| Second Chance | 5  | 4  |
| Fast Breaks   | 2  | 0  |
| Bench         | 8  | 6  |

|    | Period by Period Scoring |     |     |     |
|----|--------------------------|-----|-----|-----|
|    | 1st                      | 2nd | OT1 | TOT |
| GT | 29                       | 36  | 7   | 72  |
| ND | 30                       | 35  | 8   | 73  |



**Period 2**

**Quarter Starters:**

|           |              |             |              |                |              |
|-----------|--------------|-------------|--------------|----------------|--------------|
| <b>ND</b> | 1 Starling J | 3 Wertz T   | 5 Ryan C     | 14 Laszewski N | 23 Goodwin D |
| <b>GT</b> | 0 Terry L    | 3 Coleman D | 4 Franklin J | 13 Kelly M     | 24 Howard R  |

| Game Time | ND  | Score        | Diff      | GT   |
|-----------|---|--------------|-----------|--|
| 20:00     |   |              |           | 1 STURDIVANT K substitution out                    |
| 20:00     |   |              |           | 11 MAXWELL T substitution out                      |
| 20:00     |   |              |           | 4 FRANKLIN J substitution in                       |
| 20:00     |   |              |           | 13 KELLY M substitution in                         |
| 19:50     | 3 WERTZ T foul shooting (2 - 1)   |              |           | 3 COLEMAN D foul drawn (2)                         |
| 19:50     |   | <b>30-30</b> | <b>0</b>  | 3 COLEMAN D free throw 1 - 2 made (5)              |
| 19:50     |   | <b>30-31</b> | <b>-1</b> | 3 COLEMAN D free throw 2 - 2 made (6)              |
| 19:20     | 3 WERTZ T 3pt FG , jump shot missed                                       |              |           |  |
| 19:19     | offensive dead ball rebound (4)   |              |           |  |
| 19:19     | turnover shot clock (8)   |              |           |  |
| 19:09     |   |              |           | 3 COLEMAN D 3pt FG from turnover, jump shot missed |
| 19:04     |   |              |           | 24 HOWARD R offensive rebound (2)                  |
| 19:04     | 5 RYAN C foul drawn (2)   |              |           | 13 KELLY M foul offensive (2 - 1)                  |
| 19:04     |   |              |           | 13 KELLY M turnover offensive (2)                  |
| 18:52     | 1 STARLING J foul drawn (1)   |              |           | 24 HOWARD R foul personal (2 - 2)                  |
| 18:40     | 14 LASZEWSKI N 2pt FG from turnover in the paint, driving layup made (6)  | <b>32-31</b> | <b>1</b>  |  |
| 18:24     |   |              |           | 3 COLEMAN D 3pt FG , jump shot missed              |
| 18:21     | 23 GOODWIN D defensive rebound (9)  |              |           |  |
| 18:14     | 1 STARLING J 2pt FG in the paint, pull up jump shot missed                |              |           |  |
| 18:11     | 1 STARLING J offensive rebound (2)  |              |           |  |
| 18:10     | 14 LASZEWSKI N 3pt FG second chance, jump shot missed                     |              |           |  |
| 18:07     |   |              |           | 4 FRANKLIN J defensive rebound (7)                 |
| 17:59     | 1 STARLING J steal (1)  |              |           | 13 KELLY M turnover lost ball (3)                  |
| 17:55     | 1 STARLING J 2pt FG fast break from turnover in the paint, layup made (8) | <b>34-31</b> | <b>3</b>  |  |
| 17:54     |   |              |           | Timeout 30 Sec                                     |
| 17:54     | 3 WERTZ T substitution out  |              |           |  |
| 17:54     | 10 HAMMOND M substitution in  |              |           |  |
| 17:54     |   |              |           | 13 KELLY M substitution out                        |
| 17:54     |   |              |           | 5 SMITH D substitution in                          |
| 17:35     | 23 GOODWIN D foul shooting (1 - 2)  |              |           | 4 FRANKLIN J foul drawn (3)                        |
| 17:35     |   | <b>34-32</b> | <b>2</b>  | 4 FRANKLIN J free throw 1 - 2 made (8)             |
| 17:35     |   |              |           | 4 FRANKLIN J free throw 2 - 2 missed               |
| 17:34     | 14 LASZEWSKI N defensive rebound (3)                                      |              |           |  |
| 17:19     | 23 GOODWIN D 2pt FG in the paint, layup made (9)                          | <b>36-32</b> | <b>4</b>  |  |
| 17:19     | 5 RYAN C assist (3)   |              |           |  |
| 16:58     |   |              |           | 0 TERRY L 3pt FG , jump shot missed                |
| 16:55     | 14 LASZEWSKI N defensive rebound (4)                                      |              |           |  |
| 16:49     | 1 STARLING J 3pt FG , jump shot missed                                    |              |           |  |
| 16:46     |   |              |           | 24 HOWARD R defensive rebound (3)                  |
| 16:40     |   |              |           | 5 SMITH D 3pt FG , jump shot missed                |
| 16:37     | 23 GOODWIN D defensive rebound (10)                                       |              |           |  |
| 16:37     | 23 GOODWIN D substitution out   |              |           |  |





Official Basketball Play by Play - Second Half  
**Georgia Tech at Notre Dame**  
 01/10/23 Purcell Pavilion at the Joyce Center, Notre Dame  
 2022-23 Men's Basketball

**Game Time:** 7:00 PM  
**Game Duration:** 2:17  
**Attendance:** 4,502

**Officials:** Clarence Armstrong, John Gaffney, Tim Clougherty

| Game Time | ND   | Score        | Diff     | GT  |
|-----------|--|--------------|----------|---|
| 16:37     | 3 WERTZ T substitution in  |              |          |   |
| 16:25     | 5 RYAN C 3pt FG , jump shot made (9)   | <b>39-32</b> | <b>7</b> |   |
| 16:25     | 1 STARLING J assist (1)  |              |          |   |
| 16:12     | 5 RYAN C steal (1)   |              |          | 5 SMITH D turnover bad pass (2)                                   |
| 16:06     | 5 RYAN C 2pt FG fast break from turnover in the paint, driving layup made (11) | <b>41-32</b> | <b>9</b> |   |
| 15:40     |  | <b>41-34</b> | <b>7</b> | 5 SMITH D 2pt FG outside the paint, step back jump shot made (10) |
| 15:19     | 10 HAMMOND M 3pt FG , jump shot missed   |              |          |   |
| 15:16     |  |              |          | 4 FRANKLIN J defensive rebound (8)                                |
| 15:11     |  | <b>41-36</b> | <b>5</b> | 5 SMITH D 2pt FG in the paint, driving layup made (12)            |
| 14:56     | 5 RYAN C turnover bad pass (1)   |              |          | 24 HOWARD R steal (1)   |
| 14:53     | 5 RYAN C foul personal (1 - 3)   |              |          | 5 SMITH D foul drawn (4)  |
| 14:53     | Timeout media  |              |          |   |
| 14:37     | 14 LASZEWSKI N steal (2)   |              |          | 5 SMITH D turnover bad pass (3)                                   |
| 14:26     | 3 WERTZ T 3pt FG from turnover, jump shot missed                               |              |          |   |
| 14:23     |  |              |          | 3 COLEMAN D defensive rebound (4)                                 |
| 14:23     | 1 STARLING J foul personal (2 - 4)   |              |          | 3 COLEMAN D foul drawn (3)  |
| 14:23     | 3 WERTZ T substitution out   |              |          |   |
| 14:23     | 23 GOODWIN D substitution in   |              |          |   |
| 14:23     |  |              |          | 0 TERRY L substitution out  |
| 14:23     |  |              |          | 3 COLEMAN D substitution out                                      |
| 14:23     |  |              |          | 24 HOWARD R substitution out                                      |
| 14:23     |  |              |          | 1 STURDIVANT K substitution in                                    |
| 14:23     |  |              |          | 11 MAXWELL T substitution in                                      |
| 14:23     |  |              |          | 13 KELLY M substitution in  |
| 14:06     |  |              |          | 1 STURDIVANT K 2pt FG outside the paint, jump shot missed         |
| 14:02     |  |              |          | 5 SMITH D offensive rebound (3)                                   |
| 14:01     |  | <b>41-38</b> | <b>3</b> | 4 FRANKLIN J 2pt FG second chance in the paint, layup made (10)   |
| 14:01     |  |              |          | 5 SMITH D assist (3)  |
| 13:33     | 14 LASZEWSKI N turnover lost ball (1)  |              |          | 13 KELLY M steal (2)  |
| 13:28     |  |              |          | 11 MAXWELL T 3pt FG from turnover, jump shot missed               |
| 13:23     | 1 STARLING J defensive rebound (3)   |              |          |   |
| 13:19     | 14 LASZEWSKI N 2pt FG in the paint, layup made (8)                             | <b>43-38</b> | <b>5</b> |   |
| 13:19     | 1 STARLING J assist (2)  |              |          |   |
| 13:19     | 14 LASZEWSKI N foul drawn (4)  |              |          | 11 MAXWELL T foul shooting (2 - 3)                                |
| 13:19     | 14 LASZEWSKI N free throw 1 - 1 made (9)                                       | <b>44-38</b> | <b>6</b> |   |
| 13:08     |  | <b>44-41</b> | <b>3</b> | 1 STURDIVANT K 3pt FG , jump shot made (3)                        |
| 13:08     |  |              |          | 5 SMITH D assist (4)  |
| 12:45     | 5 RYAN C 3pt FG , jump shot missed   |              |          |   |
| 12:42     |  |              |          | 1 STURDIVANT K defensive rebound (1)                              |
| 12:35     |  | <b>44-43</b> | <b>1</b> | 5 SMITH D 2pt FG in the paint, jump shot made (14)                |
| 12:16     | 1 STARLING J 2pt FG in the paint, driving layup made (10)                      | <b>46-43</b> | <b>3</b> |   |
| 12:16     | 1 STARLING J foul drawn (2)  |              |          | 5 SMITH D foul shooting (4 - 4)                                   |
| 12:16     | 5 RYAN C substitution out  |              |          |   |
| 12:16     | 3 WERTZ T substitution in  |              |          |   |
| 12:16     | 1 STARLING J free throw 1 - 1 missed   |              |          |   |
| 12:14     |  |              |          | 11 MAXWELL T defensive rebound (1)                                |
| 11:53     |  |              |          | 13 KELLY M 2pt FG in the paint, layup missed                      |



Official Basketball Play by Play - Second Half  
**Georgia Tech at Notre Dame**  
 01/10/23 Purcell Pavilion at the Joyce Center, Notre Dame  
 2022-23 Men's Basketball

**Game Time:** 7:00 PM  
**Game Duration:** 2:17  
**Attendance:** 4,502

**Officials:** Clarence Armstrong, John Gaffney, Tim Clougherty

| Game Time | ND   | Score        | Diff      | GT  |
|-----------|--|--------------|-----------|---|
| 11:51     |  |              |           | 4 FRANKLIN J offensive rebound (9)                                |
| 11:50     |  | <b>46-46</b> | <b>0</b>  | 11 MAXWELL T 3pt FG second chance, jump shot made (3)             |
| 11:50     |  |              |           | 4 FRANKLIN J assist (3)   |
| 11:18     | 23 GOODWIN D 3pt FG , jump shot missed                                   |              |           |   |
| 11:15     |  |              |           | 5 SMITH D defensive rebound (4)                                   |
| 11:11     |  | <b>46-49</b> | <b>-3</b> | 13 KELLY M 3pt FG , jump shot made (9)                            |
| 11:11     |  |              |           | 5 SMITH D assist (5)  |
| 11:02     | Timeout 30 Sec   |              |           |   |
| 11:02     | 1 STARLING J substitution out  |              |           |   |
| 11:02     | 5 RYAN C substitution in   |              |           |   |
| 10:49     | 23 GOODWIN D 2pt FG in the paint, layup missed                           |              |           |   |
| 10:46     |  |              |           | 11 MAXWELL T defensive rebound (2)                                |
| 10:31     |  | <b>46-51</b> | <b>-5</b> | 4 FRANKLIN J 2pt FG in the paint, driving layup made (12)         |
| 10:17     | 14 LASZEWSKI N foul drawn (5)  |              |           | 1 STURDIVANT K foul personal (1 - 5)                              |
| 10:17     | 10 HAMMOND M substitution out  |              |           |   |
| 10:17     | 1 STARLING J substitution in   |              |           |   |
| 10:11     | 5 RYAN C 3pt FG , jump shot missed                                       |              |           |   |
| 10:07     |  |              |           | 5 SMITH D defensive rebound (5)                                   |
| 10:00     |  |              |           | 11 MAXWELL T turnover travel (1)                                  |
| 09:38     | 5 RYAN C 2pt FG from turnover in the paint, driving layup missed         |              |           |   |
| 09:35     |  |              |           | 5 SMITH D defensive rebound (6)                                   |
| 09:27     |  |              |           | 11 MAXWELL T 2pt FG in the paint, layup missed                    |
| 09:24     | 23 GOODWIN D defensive rebound (11)                                      |              |           |   |
| 09:05     | 23 GOODWIN D 2pt FG in the paint, driving layup made (11)                | <b>48-51</b> | <b>-3</b> |   |
| 09:04     | 23 GOODWIN D foul drawn (5)  |              |           | 1 STURDIVANT K foul shooting (2 - 6)                              |
| 09:04     | 14 LASZEWSKI N substitution out  |              |           |   |
| 09:04     | 13 CAMPBELL D substitution in  |              |           |   |
| 09:04     |  |              |           | 11 MAXWELL T substitution out                                     |
| 09:04     |  |              |           | 0 TERRY L substitution in   |
| 09:04     | 23 GOODWIN D free throw 1 - 1 made (12)                                  | <b>49-51</b> | <b>-2</b> |   |
| 08:47     |  |              |           | 0 TERRY L 2pt FG in the paint, driving layup missed               |
| 08:44     | 13 CAMPBELL D defensive rebound (3)                                      |              |           |   |
| 08:37     | 5 RYAN C 2pt FG in the paint, driving layup blocked                      |              |           |   |
| 08:37     |  |              |           | 4 FRANKLIN J block (3)  |
| 08:37     | offensive rebound (27)   |              |           |   |
| 08:37     | 5 RYAN C substitution out  |              |           |   |
| 08:37     | 14 LASZEWSKI N substitution in   |              |           |   |
| 08:35     | 23 GOODWIN D 2pt FG second chance outside the paint, jump shot made (14) | <b>51-51</b> | <b>0</b>  |   |
| 08:35     | 3 WERTZ T assist (2)   |              |           |   |
| 08:05     |  |              |           | 13 KELLY M 3pt FG , jump shot missed                              |
| 08:02     | 14 LASZEWSKI N defensive rebound (5)                                     |              |           |   |
| 07:45     | 14 LASZEWSKI N 3pt FG , jump shot made (12)                              | <b>54-51</b> | <b>3</b>  |   |
| 07:45     | 3 WERTZ T assist (3)   |              |           |   |
| 07:27     |  | <b>54-53</b> | <b>1</b>  | 1 STURDIVANT K 2pt FG in the paint, turnaround jump shot made (5) |
| 07:07     | 14 LASZEWSKI N foul offensive (3 - 5)                                    |              |           | 0 TERRY L foul drawn (1)  |
| 07:07     | 14 LASZEWSKI N turnover offensive (2)                                    |              |           |   |
| 07:07     |  |              |           | Timeout media   |



Official Basketball Play by Play - Second Half  
**Georgia Tech at Notre Dame**  
 01/10/23 Purcell Pavilion at the Joyce Center, Notre Dame  
 2022-23 Men's Basketball

**Game Time:** 7:00 PM  
**Game Duration:** 2:17  
**Attendance:** 4,502

**Officials:** Clarence Armstrong, John Gaffney, Tim Clougherty

| Game Time | ND   | Score | Diff | GT  |
|-----------|--|-------|------|---|
| 06:43     |  | 54-55 | -1   | 1 STURDIVANT K 2pt FG from turnover outside the paint, jump shot made (7)         |
| 06:10     | Timeout 30 Sec   |       |      |   |
| 06:10     | 13 CAMPBELL D substitution out                                   |       |      |   |
| 06:10     | 5 RYAN C substitution in   |       |      |   |
| 06:09     | 14 LASZEWSKI N 3pt FG , jump shot missed                         |       |      |   |
| 06:05     |  |       |      | 5 SMITH D defensive rebound (7)   |
| 05:44     |  |       |      | 13 KELLY M 2pt FG in the paint, floating jump shot missed                         |
| 05:41     |  |       |      | 4 FRANKLIN J offensive rebound (10)   |
| 05:32     |  | 54-57 | -3   | 1 STURDIVANT K 2pt FG second chance outside the paint, pull up jump shot made (9) |
| 05:11     | 1 STARLING J 2pt FG in the paint, floating jump shot made (12)   | 56-57 | -1   |   |
| 04:48     |  |       |      | 1 STURDIVANT K 2pt FG outside the paint, pull up jump shot missed                 |
| 04:44     |  |       |      | 13 KELLY M offensive rebound (3)  |
| 04:45     | 23 GOODWIN D foul shooting (2 - 6)                               |       |      | 13 KELLY M foul drawn (1)   |
| 04:45     |  | 56-58 | -2   | 13 KELLY M free throw 1 - 2 made (10)   |
| 04:45     |  | 56-59 | -3   | 13 KELLY M free throw 2 - 2 made (11)   |
| 04:23     | 14 LASZEWSKI N 2pt FG in the paint, layup blocked                |       |      |   |
| 04:23     |  |       |      | 4 FRANKLIN J block (4)  |
| 04:19     |  |       |      | 1 STURDIVANT K defensive rebound (2)  |
| 04:16     |  | 56-61 | -5   | 5 SMITH D 2pt FG fast break in the paint, layup made (16)                         |
| 04:16     |  |       |      | 1 STURDIVANT K assist (1)   |
| 03:50     | 23 GOODWIN D turnover lost ball (2)                              |       |      | 13 KELLY M steal (3)  |
| 03:45     |  | 56-63 | -7   | 1 STURDIVANT K 2pt FG fast break from turnover in the paint, layup made (11)      |
| 03:45     |  |       |      | 5 SMITH D assist (6)  |
| 03:36     | Timeout 60 Sec   |       |      |   |
| 03:36     | 3 WERTZ T substitution out                                       |       |      |   |
| 03:36     | 10 HAMMOND M substitution in                                     |       |      |   |
| 03:26     | 23 GOODWIN D 2pt FG in the paint, turnaround jump shot made (16) | 58-63 | -5   |   |
| 03:03     | 5 RYAN C steal (2)   |       |      | 13 KELLY M turnover bad pass (4)  |
| 02:56     | 14 LASZEWSKI N 3pt FG from turnover, jump shot missed            |       |      |   |
| 02:53     |  |       |      | 5 SMITH D defensive rebound (8)   |
| 02:31     | 1 STARLING J foul personal (3 - 7)                               |       |      | 0 TERRY L foul drawn (2)  |
| 02:31     |  | 58-64 | -6   | 0 TERRY L 1&1 free throw 1 made (3)   |
| 02:31     | 10 HAMMOND M substitution out                                    |       |      |   |
| 02:31     | 3 WERTZ T substitution in  |       |      |   |
| 02:31     |  | 58-65 | -7   | 0 TERRY L 1&1 free throw 2 made (4)   |
| 02:16     | 1 STARLING J 2pt FG in the paint, driving layup made (14)        | 60-65 | -5   |   |
| 01:53     |  |       |      | 1 STURDIVANT K 2pt FG outside the paint, turnaround jump shot missed              |
| 01:50     | 14 LASZEWSKI N defensive rebound (6)                             |       |      |   |
| 01:28     | 1 STARLING J foul drawn (3)                                      |       |      | 0 TERRY L foul personal (3 - 7)   |
| 01:28     | 1 STARLING J 1&1 free throw 1 made (15)                          | 61-65 | -4   |   |
| 01:28     | 1 STARLING J 1&1 free throw 2 made (16)                          | 62-65 | -3   |   |
| 01:01     |  |       |      | 5 SMITH D 2pt FG in the paint, driving layup blocked                              |
| 01:01     | 5 RYAN C block (2)   |       |      |   |
| 00:55     | 14 LASZEWSKI N defensive rebound (7)                             |       |      |   |
| 00:53     | 3 WERTZ T 3pt FG , jump shot made (3)                            | 65-65 | 0    |   |



Official Basketball Play by Play - Second Half  
**Georgia Tech at Notre Dame**  
 01/10/23 Purcell Pavilion at the Joyce Center, Notre Dame  
 2022-23 Men's Basketball

**Game Time:** 7:00 PM  
**Game Duration:** 2:17  
**Attendance:** 4,502

**Officials:** Clarence Armstrong, John Gaffney, Tim Clougherty

| Game Time            | ND   | Score | Diff | GT                                  |
|----------------------|--|-------|------|-------------------------------------|
| 00:53                | 23 GOODWIN D assist (1)  |       |      |                                     |
| 00:47                |  |       |      | Timeout 60 Sec                      |
| 00:47                |  |       |      | 1 STURDIVANT K substitution out     |
| 00:47                |  |       |      | 3 COLEMAN D substitution in         |
| 00:28                |  |       |      | Timeout 30 Sec                      |
| 00:21                |  |       |      | turnover shot clock (13)            |
| 00:04                | 1 STARLING J 2pt FG from turnover in the paint, driving layup missed |       |      |                                     |
| 00:01                |  |       |      | 4 FRANKLIN J defensive rebound (11) |
| <b>END OF PERIOD</b> |  |       |      |                                     |
| <b>ND 65-65 GT</b>   |  |       |      |                                     |



Officials: Clarence Armstrong, John Gaffney, Tim Clougherty

Georgia Tech - 36

| NO.           | Name                   | Min     | FG    |     |     | Rebounds |    |     | Fouls |    | TP | AS | TO | ST | Blocks |    | +/- |
|---------------|------------------------|---------|-------|-----|-----|----------|----|-----|-------|----|----|----|----|----|--------|----|-----|
|               |                        |         | M-A   | M-A | M-A | OR       | DR | TOT | PF    | FD |    |    |    |    | BS     | BA |     |
| 4             | Ja'von Franklin        | F 20:00 | 2-2   | 0-0 | 1-2 | 2        | 3  | 5   | 0     | 1  | 5  | 1  | 0  | 0  | 2      | 0  | 1   |
| 24            | Rodney Howard          | C 05:37 | 0-0   | 0-0 | 0-0 | 1        | 1  | 2   | 1     | 0  | 0  | 0  | 0  | 1  | 0      | 0  | -4  |
| 0             | Lance Terry            | G 14:41 | 0-2   | 0-1 | 2-2 | 0        | 0  | 0   | 1     | 2  | 2  | 0  | 0  | 0  | 0      | 0  | -7  |
| 3             | Dallan "Deebo" Coleman | G 06:25 | 0-2   | 0-2 | 2-2 | 0        | 1  | 1   | 0     | 2  | 2  | 0  | 0  | 0  | 0      | 0  | -4  |
| 13            | Miles Kelly            | G 16:29 | 1-4   | 1-2 | 2-2 | 1        | 0  | 1   | 1     | 1  | 5  | 0  | 3  | 2  | 0      | 0  | 3   |
| 5             | Deivon Smith           | 17:54   | 4-6   | 0-1 | 0-0 | 1        | 5  | 6   | 1     | 1  | 8  | 4  | 2  | 0  | 0      | 1  | 3   |
| 1             | Kyle Sturdivant        | 13:35   | 5-8   | 1-1 | 0-0 | 0        | 2  | 2   | 2     | 0  | 11 | 1  | 0  | 0  | 0      | 0  | 5   |
| 11            | Tristan Maxwell        | 05:19   | 1-3   | 1-2 | 0-0 | 0        | 2  | 2   | 1     | 0  | 3  | 0  | 1  | 0  | 0      | 0  | 8   |
| Team          |                        |         |       |     |     | 0        | 0  | 0   |       |    | 0  |    | 1  |    |        |    |     |
| <b>Totals</b> |                        |         | 13-27 | 3-9 | 7-8 | 5        | 14 | 19  | 7     | 7  | 36 | 6  | 7  | 3  | 2      | 1  | 1   |

| Shooting By Period |       |       |
|--------------------|-------|-------|
| 2nd FG%            | 13-27 | 48.1% |
| 3PT%               | 3-9   | 33.3% |
| FT%                | 7-8   | 87.5% |
| GM FG%             | 13-27 | 48.1% |
| 3PT%               | 3-9   | 33.3% |
| FT%                | 7-8   | 87.5% |

Dead Ball Rebounds: 0, 0

Technical Fouls::NONE

Notre Dame - 35

| NO.           | Name           | Min     | FG    |      |     | Rebounds |    |     | Fouls |    | TP | AS | TO | ST | Blocks |    | +/- |
|---------------|----------------|---------|-------|------|-----|----------|----|-----|-------|----|----|----|----|----|--------|----|-----|
|               |                |         | M-A   | M-A  | M-A | OR       | DR | TOT | PF    | FD |    |    |    |    | BS     | BA |     |
| 14            | Nate Laszewski | F 19:33 | 3-7   | 1-4  | 1-1 | 0        | 5  | 5   | 1     | 2  | 8  | 0  | 2  | 1  | 0      | 1  | -2  |
| 3             | Trey Wertz     | G 15:31 | 1-3   | 1-3  | 0-0 | 0        | 0  | 0   | 1     | 0  | 3  | 2  | 0  | 0  | 0      | 0  | -1  |
| 5             | Cormac Ryan    | G 16:19 | 2-6   | 1-3  | 0-0 | 0        | 0  | 0   | 1     | 1  | 5  | 1  | 1  | 2  | 1      | 1  | 4   |
| 10            | Marcus Hammond | G 08:42 | 0-1   | 0-1  | 0-0 | 0        | 0  | 0   | 0     | 0  | 0  | 0  | 0  | 0  | 0      | 0  | -7  |
| 23            | Dane Goodwin   | G 17:46 | 4-6   | 0-1  | 1-1 | 0        | 3  | 3   | 2     | 1  | 9  | 1  | 1  | 0  | 0      | 0  | -2  |
| 1             | JJ Starling    | 19:15   | 4-7   | 0-1  | 2-3 | 1        | 1  | 2   | 2     | 3  | 10 | 2  | 0  | 1  | 0      | 0  | 1   |
| 13            | Dom Campbell   | 02:54   | 0-0   | 0-0  | 0-0 | 0        | 1  | 1   | 0     | 0  | 0  | 0  | 0  | 0  | 0      | 0  | 2   |
| Team          |                |         |       |      |     | 1        | 0  | 1   |       |    | 0  |    | 1  |    |        |    |     |
| <b>Totals</b> |                |         | 14-30 | 3-13 | 4-5 | 2        | 10 | 12  | 7     | 7  | 35 | 6  | 5  | 4  | 1      | 2  | -1  |

| Shooting By Period |       |       |
|--------------------|-------|-------|
| 2nd FG%            | 14-30 | 46.7% |
| 3PT%               | 3-13  | 23.1% |
| FT%                | 4-5   | 80%   |
| GM FG%             | 14-30 | 46.7% |
| 3PT%               | 3-13  | 23.1% |
| FT%                | 4-5   | 80.0% |

Dead Ball Rebounds: 1, 0

Technical Fouls::NONE

|                  | GT                       | ND                        |
|------------------|--------------------------|---------------------------|
| Biggest lead     | 7 (2 <sup>nd</sup> 3:45) | 9 (2 <sup>nd</sup> 16:06) |
| Best Scoring Run | 8(2 <sup>nd</sup> 10:31) | 8(2 <sup>nd</sup> 7:45)   |
| Lead Changes     | 5                        |                           |
| Times Tied       | 4                        |                           |
| Time with Lead   | 09:36                    | 07:52                     |

| Points from   | GT | ND |
|---------------|----|----|
| Turnovers     | 4  | 6  |
| Paint         | 14 | 20 |
| Second Chance | 9  | 2  |
| Fast Breaks   | 4  | 4  |
| Bench         | 22 | 10 |

|    | Period by Period Scoring |     |     |     |
|----|--------------------------|-----|-----|-----|
|    | 1st                      | 2nd | OT1 | TOT |
| GT | 29                       | 36  | 7   | 72  |
| ND | 30                       | 35  | 8   | 73  |



**Overtime 1**

**Quarter Starters:**

|           |              |                |              |                |              |
|-----------|--------------|----------------|--------------|----------------|--------------|
| <b>ND</b> | 1 Starling J | 3 Wertz T      | 5 Ryan C     | 14 Laszewski N | 23 Goodwin D |
| <b>GT</b> | 0 Terry L    | 1 Sturdivant K | 4 Franklin J | 5 Smith D      | 13 Kelly M   |

| Game Time          | ND  | Score        | Diff      | GT  |
|--------------------|---|--------------|-----------|---|
| 05:00              |   |              |           | 3 COLEMAN D substitution out  |
| 05:00              |   |              |           | 1 STURDIVANT K substitution in  |
| 05:00              | 14 LASZEWSKI N jumpball won                                 |              |           | 4 FRANKLIN J jumpball lost  |
| 04:33              | 1 STARLING J 2pt FG in the paint, floating jump shot missed |              |           |   |
| 04:30              |   |              |           | 5 SMITH D defensive rebound (9)                                       |
| 04:08              |   |              |           | 1 STURDIVANT K 2pt FG outside the paint, turnaround jump shot blocked |
| 04:08              | 14 LASZEWSKI N block (1)                                    |              |           |   |
| 04:04              | 3 WERTZ T defensive rebound (3)                             |              |           |   |
| 03:40              | 3 WERTZ T 2pt FG in the paint, jump shot missed             |              |           |   |
| 03:37              |   |              |           | 4 FRANKLIN J defensive rebound (12)                                   |
| 03:12              |   | <b>65-67</b> | <b>-2</b> | 1 STURDIVANT K 2pt FG in the paint, floating jump shot made (13)      |
| 02:52              | 23 GOODWIN D turnover lost ball (3)                         |              |           | 1 STURDIVANT K steal (1)  |
| 02:51              |   |              |           | Timeout 30 Sec  |
| 02:33              | 23 GOODWIN D steal (1)                                      |              |           | 5 SMITH D turnover lost ball (4)                                      |
| 02:20              | 23 GOODWIN D 3pt FG from turnover, jump shot made (19)      | <b>68-67</b> | <b>1</b>  |   |
| 02:20              | 1 STARLING J assist (3)                                     |              |           |   |
| 01:55              |   |              |           | 4 FRANKLIN J 2pt FG in the paint, turnaround jump shot missed         |
| 01:52              |   |              |           | 5 SMITH D offensive rebound (10)                                      |
| 01:51              |   |              |           | 0 TERRY L 3pt FG second chance, jump shot missed                      |
| 01:48              | 23 GOODWIN D defensive rebound (12)                         |              |           |   |
| 01:36              | 1 STARLING J foul offensive (4 - 8)                         |              |           | 0 TERRY L foul drawn (3)  |
| 01:36              | 1 STARLING J turnover offensive (4)                         |              |           |   |
| 01:36              |   |              |           | 0 TERRY L substitution out  |
| 01:36              |   |              |           | 3 COLEMAN D substitution in   |
| 01:20              |   | <b>68-70</b> | <b>-2</b> | 1 STURDIVANT K 3pt FG from turnover, jump shot made (16)              |
| 01:20              |   |              |           | 5 SMITH D assist (7)  |
| 00:55              | 3 WERTZ T 3pt FG , jump shot made (6)                       | <b>71-70</b> | <b>1</b>  |   |
| 00:55              | 23 GOODWIN D assist (2)                                     |              |           |   |
| 00:55              | Timeout 30 Sec  |              |           |   |
| 00:40              | 3 WERTZ T foul shooting (3 - 9)                             |              |           | 1 STURDIVANT K foul drawn (1)   |
| 00:39              |   | <b>71-71</b> | <b>0</b>  | 1 STURDIVANT K free throw 1 - 2 made (17)                             |
| 00:39              |   | <b>71-72</b> | <b>-1</b> | 1 STURDIVANT K free throw 2 - 2 made (18)                             |
| 00:23              | 14 LASZEWSKI N foul drawn (6)                               |              |           | 3 COLEMAN D foul shooting (2 - 8)                                     |
| 00:23              | 14 LASZEWSKI N free throw 1 - 2 made (13)                   | <b>72-72</b> | <b>0</b>  |   |
| 00:23              | 14 LASZEWSKI N free throw 2 - 2 made (14)                   | <b>73-72</b> | <b>1</b>  |   |
| 00:05              |   |              |           | 1 STURDIVANT K 3pt FG , jump shot missed                              |
| 00:03              |   |              |           | offensive rebound (42)  |
| 00:02              |   |              |           | 4 FRANKLIN J 2pt FG second chance outside the paint, jump shot missed |
| 00:00              | 3 WERTZ T defensive rebound (4)                             |              |           |   |
| <b>END OF GAME</b> |   |              |           |   |
| <b>ND 73-72 GT</b> |   |              |           |   |



**Officials:** Clarence Armstrong, John Gaffney, Tim Clougherty

**Georgia Tech - 7**

| NO.           | Name                   | Min     | FG  |     |     | Rebounds |    |     | Fouls |    | TP | AS | TO | ST | Blocks |    | +/- |
|---------------|------------------------|---------|-----|-----|-----|----------|----|-----|-------|----|----|----|----|----|--------|----|-----|
|               |                        |         | M-A | M-A | M-A | OR       | DR | TOT | PF    | FD |    |    |    |    | BS     | BA |     |
| 4             | Ja'von Franklin        | F 05:00 | 0-2 | 0-0 | 0-0 | 0        | 1  | 1   | 0     | 0  | 0  | 0  | 0  | 0  | 0      | 0  | -1  |
| 24            | Rodney Howard          | C 00:00 | 0-0 | 0-0 | 0-0 | 0        | 0  | 0   | 0     | 0  | 0  | 0  | 0  | 0  | 0      | 0  | 0   |
| 0             | Lance Terry            | G 03:24 | 0-1 | 0-1 | 0-0 | 0        | 0  | 0   | 0     | 1  | 0  | 0  | 0  | 0  | 0      | 0  | -1  |
| 3             | Dallan "Deebo" Coleman | G 01:36 | 0-0 | 0-0 | 0-0 | 0        | 0  | 0   | 1     | 0  | 0  | 0  | 0  | 0  | 0      | 0  | 0   |
| 13            | Miles Kelly            | G 05:00 | 0-0 | 0-0 | 0-0 | 0        | 0  | 0   | 0     | 0  | 0  | 0  | 0  | 0  | 0      | 0  | -1  |
| 5             | Deivon Smith           | 05:00   | 0-0 | 0-0 | 0-0 | 1        | 1  | 2   | 0     | 0  | 0  | 1  | 1  | 0  | 0      | 0  | -1  |
| 1             | Kyle Sturdivant        | 05:00   | 2-4 | 1-2 | 2-2 | 0        | 0  | 0   | 0     | 1  | 7  | 0  | 0  | 1  | 0      | 1  | -1  |
| Team          |                        |         |     |     |     | 1        | 0  | 1   |       | 0  |    | 0  |    |    |        |    |     |
| <b>Totals</b> |                        |         | 2-7 | 1-3 | 2-2 | 2        | 2  | 4   | 1     | 2  | 7  | 1  | 1  | 1  | 0      | 1  | -1  |

| Shooting By Period |     |        |
|--------------------|-----|--------|
| OT FG%             | 2-7 | 28.6%  |
| 3PT%               | 1-3 | 33.3%  |
| FT%                | 2-2 | 100%   |
| GM FG%             | 2-7 | 28.6%  |
| 3PT%               | 1-3 | 33.3%  |
| FT%                | 2-2 | 100.0% |

Dead Ball Rebounds: 0, 0

Technical Fouls::NONE

**Notre Dame - 8**

| NO.           | Name           | Min     | FG  |     |     | Rebounds |    |     | Fouls |    | TP | AS | TO | ST | Blocks |    | +/- |
|---------------|----------------|---------|-----|-----|-----|----------|----|-----|-------|----|----|----|----|----|--------|----|-----|
|               |                |         | M-A | M-A | M-A | OR       | DR | TOT | PF    | FD |    |    |    |    | BS     | BA |     |
| 14            | Nate Laszewski | F 05:00 | 0-0 | 0-0 | 2-2 | 0        | 0  | 0   | 0     | 1  | 2  | 0  | 0  | 0  | 1      | 0  | 1   |
| 3             | Trey Wertz     | G 05:00 | 1-2 | 1-1 | 0-0 | 0        | 2  | 2   | 1     | 0  | 3  | 0  | 0  | 0  | 0      | 0  | 1   |
| 5             | Cormac Ryan    | G 05:00 | 0-0 | 0-0 | 0-0 | 0        | 0  | 0   | 0     | 0  | 0  | 0  | 0  | 0  | 0      | 0  | 1   |
| 10            | Marcus Hammond | G 00:00 | 0-0 | 0-0 | 0-0 | 0        | 0  | 0   | 0     | 0  | 0  | 0  | 0  | 0  | 0      | 0  | 0   |
| 23            | Dane Goodwin   | G 05:00 | 1-1 | 1-1 | 0-0 | 0        | 1  | 1   | 0     | 0  | 3  | 1  | 1  | 1  | 0      | 0  | 1   |
| 1             | JJ Starling    | 05:00   | 0-1 | 0-0 | 0-0 | 0        | 0  | 0   | 1     | 0  | 0  | 1  | 1  | 0  | 0      | 0  | 1   |
| Team          |                |         |     |     |     | 0        | 0  | 0   |       | 0  |    | 0  |    |    |        |    |     |
| <b>Totals</b> |                |         | 2-4 | 2-2 | 2-2 | 0        | 3  | 3   | 2     | 1  | 8  | 2  | 2  | 1  | 1      | 0  | 1   |

| Shooting By Period |     |        |
|--------------------|-----|--------|
| OT FG%             | 2-4 | 50.0%  |
| 3PT%               | 2-2 | 100.0% |
| FT%                | 2-2 | 100%   |
| GM FG%             | 2-4 | 50.0%  |
| 3PT%               | 2-2 | 100.0% |
| FT%                | 2-2 | 100.0% |

Dead Ball Rebounds: 0, 0

Technical Fouls::NONE

|                         | GT                          | ND                          |
|-------------------------|-----------------------------|-----------------------------|
| <b>Biggest lead</b>     | 2 (1 <sup>st</sup> OT 3:12) | 1 (1 <sup>st</sup> OT 2:20) |
| <b>Best Scoring Run</b> | 3 (1 <sup>st</sup> OT 1:20) | 3 (1 <sup>st</sup> OT 2:20) |
| <b>Lead Changes</b>     | 6                           |                             |
| <b>Times Tied</b>       | 2                           |                             |
| <b>Time with Lead</b>   | 01:34                       | 01:38                       |

| Points from          | GT | ND |
|----------------------|----|----|
| <b>Turnovers</b>     | 3  | 3  |
| <b>Paint</b>         | 2  | 0  |
| <b>Second Chance</b> | 0  | 0  |
| <b>Fast Breaks</b>   | 0  | 0  |
| <b>Bench</b>         | 7  | 0  |

|           | Period by Period Scoring |     |     |     |
|-----------|--------------------------|-----|-----|-----|
|           | 1st                      | 2nd | OT1 | TOT |
| <b>GT</b> | 29                       | 36  | 7   | 72  |
| <b>ND</b> | 30                       | 35  | 8   | 73  |

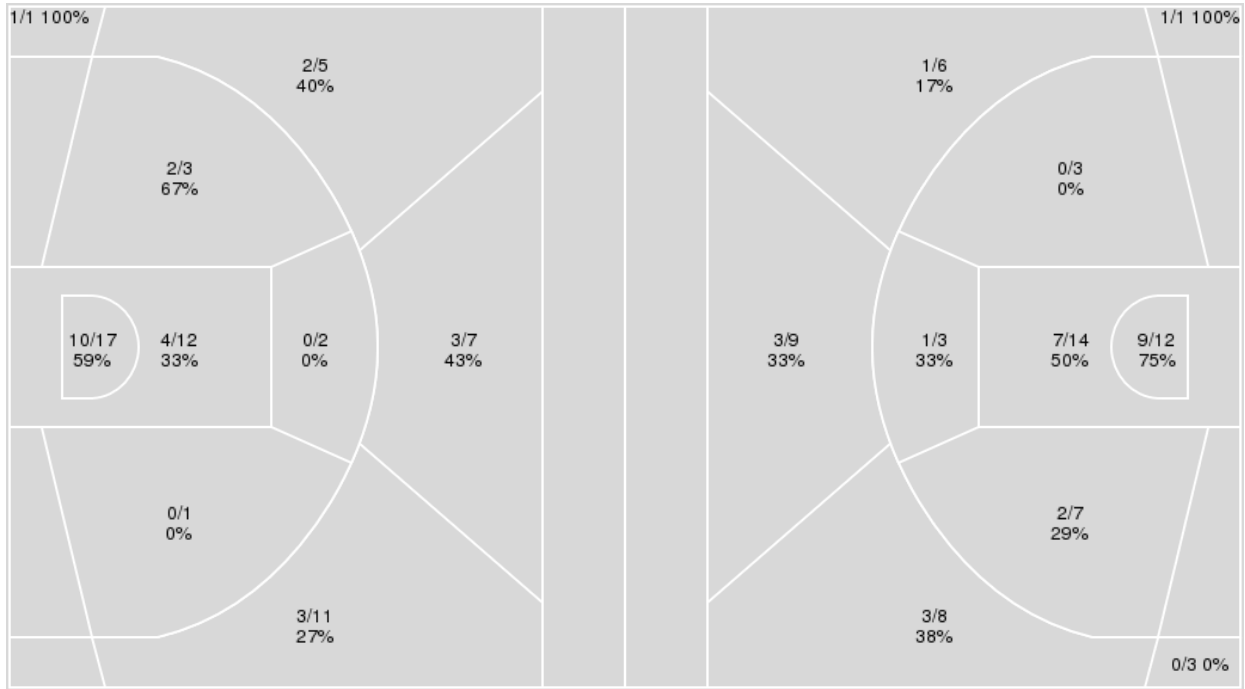


**Officials:** Clarence Armstrong, John Gaffney, Tim Clougherty

{ Players => 1, 2, 3, 4, 5, 10, 12, 13, 14, 20, 23, 24, 25; } FG Types => { Players => All; } FG Types => All; Results => All;  
 All; Results => All;

**Notre Dame**

**Georgia Tech**



| Notre Dame  | M/A   | %  |
|-------------|-------|----|
| Field Goals | 25/59 | 42 |
| 2 Points    | 16/35 | 46 |
| 3 Points    | 9/24  | 38 |
| Free Throws | 14/19 | 74 |

| Georgia Tech | M/A   | %  |
|--------------|-------|----|
| Field Goals  | 27/66 | 41 |
| 2 Points     | 19/39 | 49 |
| 3 Points     | 8/27  | 30 |
| Free Throws  | 10/12 | 83 |





**Georgia Tech at Notre Dame**

01/10/23 Purcell Pavilion at the Joyce Center, Notre Dame  
2022-23 Men's Basketball

**Game Time:** 7:00 PM  
**Game Duration:** 2:17  
**Attendance:** 4,502

**Officials:** Clarence Armstrong, John Gaffney, Tim Clougherty

**Georgia Tech**

| No | Name                   | Mins  |       | Score   |         | Points Diff |     | Points per Min |      | Assists |     | Rebounds |     | Steals |     | Turnovers |     |
|----|------------------------|-------|-------|---------|---------|-------------|-----|----------------|------|---------|-----|----------|-----|--------|-----|-----------|-----|
|    |                        | On    | Off   | On      | Off     | On          | Off | On             | Off  | On      | Off | On       | Off | On     | Off | On        | Off |
| 0  | Lance Terry            | 34:55 | 10:05 | 43 - 56 | 29 - 17 | -13         | 12  | 1.23           | 2.88 | 6       | 8   | 31       | 11  | 5      | 2   | 13        | 1   |
| 1  | Kyle Sturdivant        | 18:38 | 26:22 | 36 - 35 | 36 - 38 | 1           | -2  | 1.93           | 1.37 | 7       | 7   | 17       | 25  | 3      | 4   | 3         | 11  |
| 3  | Dallan "Deebo" Coleman | 27:11 | 17:49 | 41 - 44 | 31 - 29 | -3          | 2   | 1.51           | 1.74 | 8       | 6   | 24       | 18  | 4      | 3   | 8         | 6   |
| 4  | Ja'von Franklin        | 44:57 | 00:03 | 72 - 70 | 0 - 3   | 2           | -3  | 1.60           | 0.00 | 14      | 0   | 42       | 0   | 7      | 0   | 14        | 0   |
| 5  | Deivon Smith           | 36:10 | 08:50 | 59 - 52 | 13 - 21 | 7           | -8  | 1.63           | 1.47 | 12      | 2   | 35       | 7   | 7      | 0   | 10        | 4   |
| 11 | Tristan Maxwell        | 11:01 | 33:59 | 27 - 16 | 45 - 57 | 11          | -12 | 2.45           | 1.32 | 8       | 6   | 12       | 30  | 2      | 5   | 2         | 12  |
| 13 | Miles Kelly            | 39:06 | 05:54 | 64 - 62 | 8 - 11  | 2           | -3  | 1.64           | 1.36 | 13      | 1   | 37       | 5   | 6      | 1   | 12        | 2   |
| 24 | Rodney Howard          | 13:02 | 31:58 | 18 - 30 | 54 - 43 | -12         | 11  | 1.38           | 1.69 | 2       | 12  | 12       | 30  | 1      | 6   | 8         | 6   |

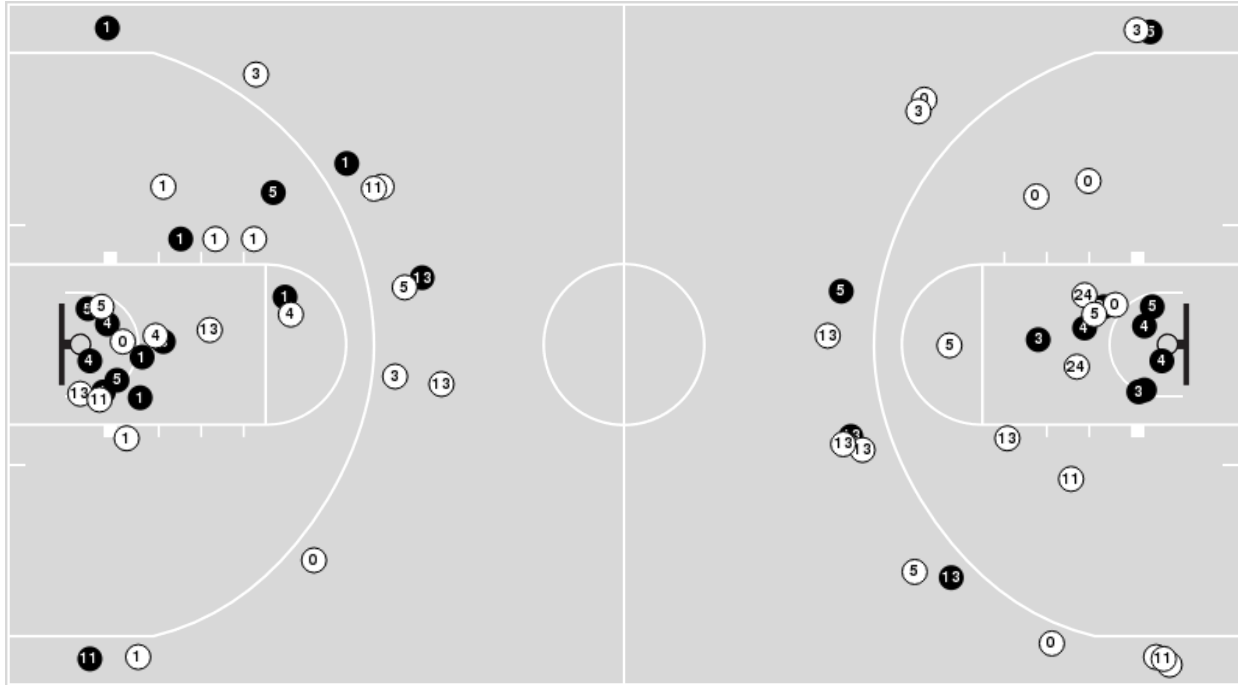
**Notre Dame**

| No | Name           | Mins  |       | Score   |         | Points Diff |     | Points per Min |      | Assists |     | Rebounds |     | Steals |     | Turnovers |     |
|----|----------------|-------|-------|---------|---------|-------------|-----|----------------|------|---------|-----|----------|-----|--------|-----|-----------|-----|
|    |                | On    | Off   | On      | Off     | On          | Off | On             | Off  | On      | Off | On       | Off | On     | Off | On        | Off |
| 1  | JJ Starling    | 38:22 | 06:38 | 61 - 53 | 12 - 19 | 8           | -7  | 1.59           | 1.81 | 10      | 2   | 29       | 4   | 6      | 1   | 14        | 0   |
| 3  | Trey Wertz     | 36:31 | 08:29 | 62 - 55 | 11 - 17 | 7           | -6  | 1.70           | 1.30 | 10      | 2   | 25       | 8   | 6      | 1   | 11        | 3   |
| 5  | Cormac Ryan    | 39:39 | 05:21 | 66 - 59 | 7 - 13  | 7           | -6  | 1.66           | 1.31 | 10      | 2   | 30       | 3   | 7      | 0   | 11        | 3   |
| 10 | Marcus Hammond | 19:55 | 25:05 | 29 - 43 | 44 - 29 | -14         | 15  | 1.46           | 1.75 | 5       | 7   | 13       | 20  | 5      | 2   | 5         | 9   |
| 13 | Dom Campbell   | 04:07 | 40:53 | 8 - 10  | 65 - 62 | -2          | 3   | 1.94           | 1.59 | 2       | 10  | 5        | 28  | 0      | 7   | 1         | 13  |
| 14 | Nate Laszewski | 41:41 | 03:19 | 70 - 72 | 3 - 0   | -2          | 3   | 1.68           | 0.90 | 12      | 0   | 28       | 5   | 6      | 1   | 13        | 1   |
| 23 | Dane Goodwin   | 41:34 | 03:26 | 65 - 68 | 8 - 4   | -3          | 4   | 1.56           | 2.33 | 10      | 2   | 32       | 1   | 5      | 2   | 13        | 1   |
| 25 | Matt Zona      | 03:11 | 41:49 | 4 - 0   | 69 - 72 | 4           | -3  | 1.26           | 1.65 | 1       | 11  | 3        | 30  | 0      | 7   | 2         | 12  |

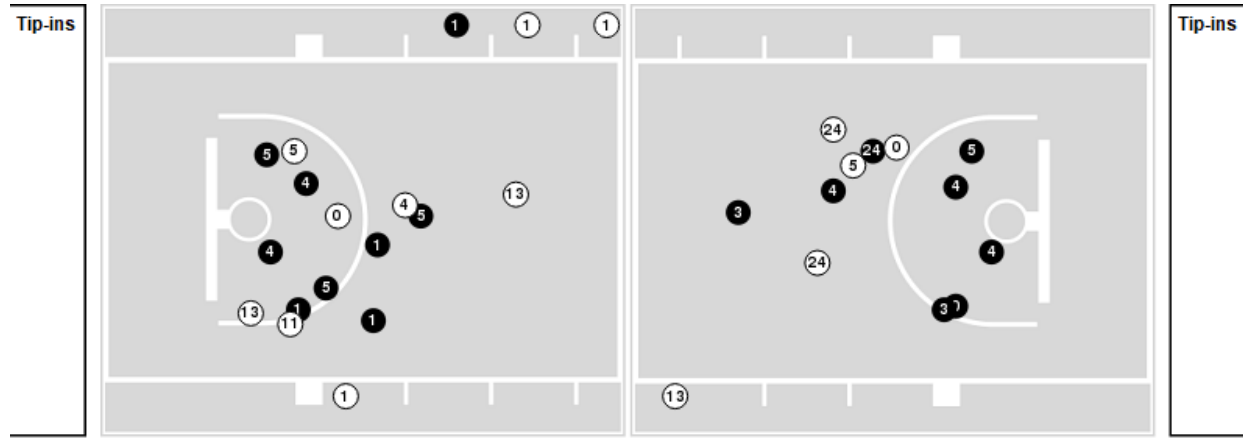


Players => AllFG Types=>AllResults=>All  
**Georgia Tech**

**All Field Goals**



**Blow Up Chart**



● Made    ○ Missed    N - Player Number

| Georgia Tech | M/A   | %  |
|--------------|-------|----|
| Field Goals  | 27/66 | 41 |
| 2 Points     | 19/39 | 49 |
| 3 Points     | 8/27  | 30 |
| Free Throws  | 10/12 | 83 |

| Georgia Tech         | M/A          | %   |
|----------------------|--------------|-----|
| Points in the Paint  | 32 (16 / 26) | 62  |
| Fast Break Points    | 6 (3/3)      | 100 |
| Second Chance Points | 14 (7/13)    | 54  |
| Effective FG%        | 47           |     |

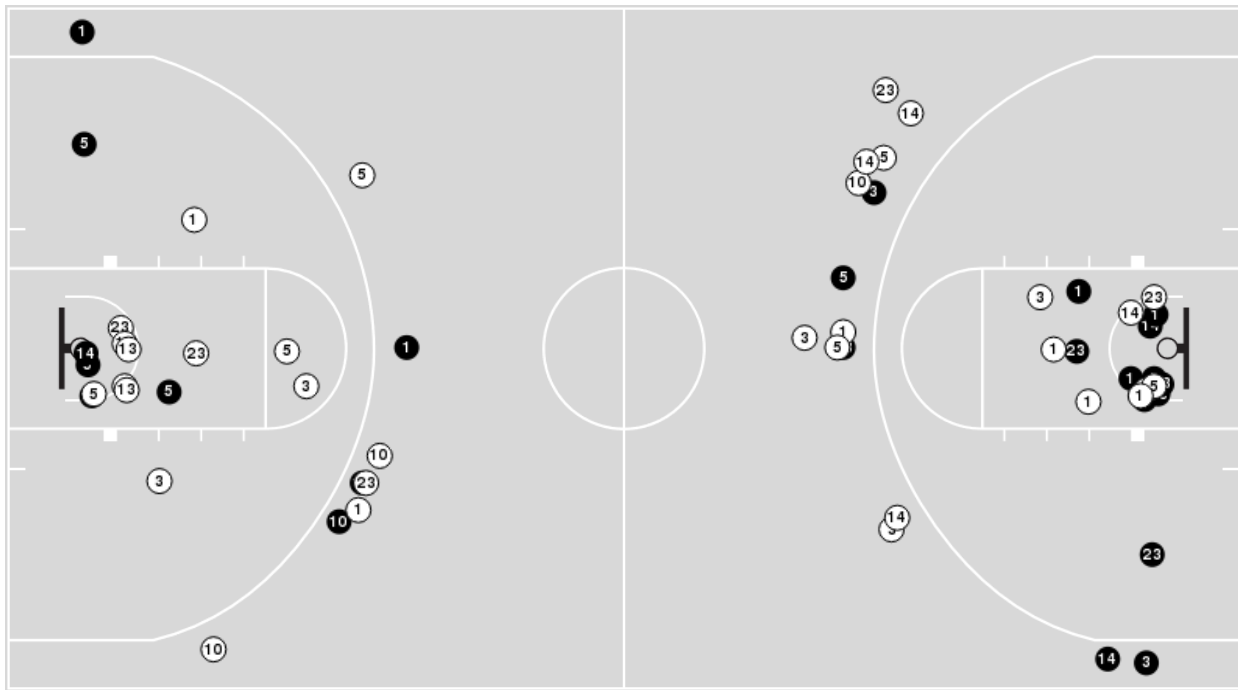


**Officials:** Clarence Armstrong, John Gaffney, Tim Clougherty

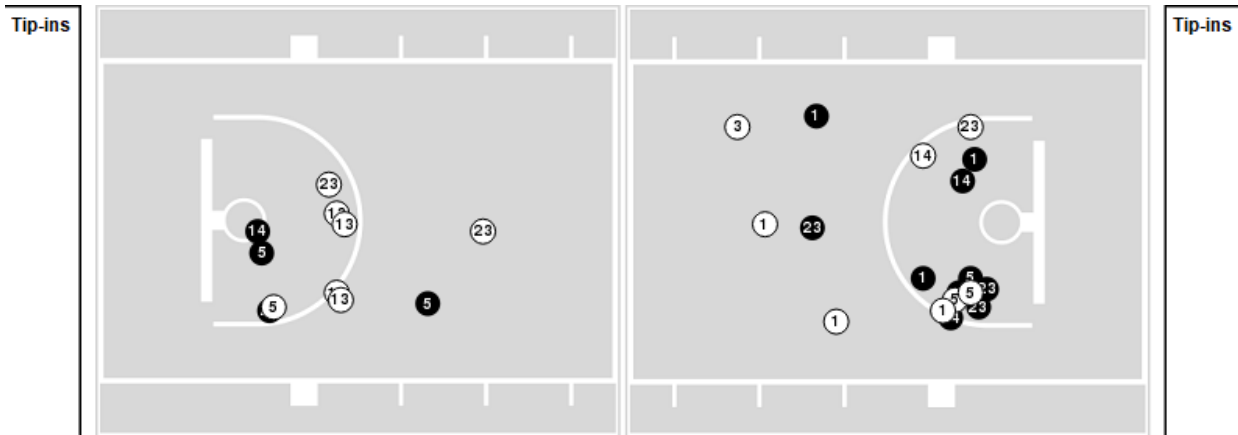
Players => 1, 2, 3, 4, 5, 10, 12, 13, 14, 20, 23, 24, 25FG Types=>AllResults=>All

**Notre Dame**

**All Field Goals**



**Blow Up Chart**



● Made ○ Missed N - Player Number

| Notre Dame  | M/A   | %  |
|-------------|-------|----|
| Field Goals | 25/59 | 42 |
| 2 Points    | 16/35 | 46 |
| 3 Points    | 9/24  | 38 |
| Free Throws | 14/19 | 74 |

| Notre Dame           | M/A          | %  |
|----------------------|--------------|----|
| Points in the Paint  | 28 (14 / 29) | 48 |
| Fast Break Points    | 4 (2/4)      | 50 |
| Second Chance Points | 6 (4/8)      | 50 |
| Effective FG%        | 50           |    |



Official Basketball Rotations Summary - Final  
**Georgia Tech at Notre Dame**  
 01/10/23 Purcell Pavilion at the Joyce Center, Notre Dame  
 2022-23 Men's Basketball

**Game Time:** 7:00 PM  
**Game Duration:** 2:17  
**Attendance:** 4,502

**Officials:** Clarence Armstrong, John Gaffney, Tim Clougherty

**Georgia Tech**

| Lineup  | Quarter On | Time On | Quarter Off | Time Off | Time on Court | Score | Score Diff | Reb | Stl | Tov | Ass | PPP    |
|---|------------|---------|-------------|----------|---------------|-------|------------|-----|-----|-----|-----|--------|
| 0- Terry L/ 3- Coleman D/ 4- Franklin J/ 13- Kelly M/ 24- Howard R/     | 1          | 20:00   | 1           | 13:28    | 06:32         | 11-14 | -3         | 5   | 0   | 1   | 2   | 1.3750 |
| 0- Terry L/ 4- Franklin J/ 5- Smith D/ 13- Kelly M/ 24- Howard R/       | 1          | 13:28   | 1           | 12:38    | 00:50         | 0-2   | -2         | 2   | 0   | 3   | 0   | 0.0000 |
| 0- Terry L/ 3- Coleman D/ 4- Franklin J/ 5- Smith D/ 13- Kelly M/       | 1          | 12:38   | 1           | 10:00    | 02:38         | 0-0   | 0          | 4   | 0   | 1   | 0   | 0.0000 |
| 0- Terry L/ 3- Coleman D/ 4- Franklin J/ 5- Smith D/ 11- Maxwell T/     | 1          | 10:00   | 1           | 07:40    | 02:20         | 3-1   | 2          | 2   | 0   | 0   | 1   | 1.0000 |
| 3- Coleman D/ 4- Franklin J/ 5- Smith D/ 11- Maxwell T/ 13- Kelly M/    | 1          | 07:40   | 1           | 04:30    | 03:10         | 9-5   | 4          | 2   | 1   | 0   | 3   | 1.5306 |
| 0- Terry L/ 3- Coleman D/ 4- Franklin J/ 5- Smith D/ 13- Kelly M/       | 1          | 04:30   | 1           | 00:12    | 04:18         | 6-5   | 1          | 4   | 2   | 0   | 1   | 0.8571 |
| 0- Terry L/ 3- Coleman D/ 4- Franklin J/ 11- Maxwell T/ 13- Kelly M/    | 1          | 00:12   | 1           | 00:03    | 00:09         | 0-0   | 0          | 0   | 0   | 1   | 0   | 0.0000 |
| 0- Terry L/ 1- Sturdivant K/ 3- Coleman D/ 11- Maxwell T/ 24- Howard R/ | 1          | 00:03   | 2           | 20:00    | 00:03         | 0-3   | -3         | 0   | 0   | 0   | 0   | 0.0000 |
| 0- Terry L/ 3- Coleman D/ 4- Franklin J/ 13- Kelly M/ 24- Howard R/     | 2          | 20:00   | 2           | 17:54    | 02:06         | 2-4   | -2         | 2   | 0   | 2   | 0   | 0.5155 |
| 0- Terry L/ 3- Coleman D/ 4- Franklin J/ 5- Smith D/ 24- Howard R/      | 2          | 17:54   | 2           | 14:23    | 03:31         | 5-7   | -2         | 3   | 1   | 2   | 0   | 0.7267 |
| 1- Sturdivant K/ 4- Franklin J/ 5- Smith D/ 11- Maxwell T/ 13- Kelly M/ | 2          | 14:23   | 2           | 09:04    | 05:19         | 15-7  | 8          | 8   | 1   | 1   | 4   | 1.6667 |
| 0- Terry L/ 1- Sturdivant K/ 4- Franklin J/ 5- Smith D/ 13- Kelly M/    | 2          | 09:04   | 2           | 00:47    | 08:16         | 14-17 | -3         | 5   | 1   | 1   | 2   | 1.1905 |
| 0- Terry L/ 3- Coleman D/ 4- Franklin J/ 5- Smith D/ 13- Kelly M/       | 2          | 00:47   | OT1         | 05:00    | 00:48         | 0-0   | 0          | 1   | 0   | 1   | 0   | 0.0000 |
| 0- Terry L/ 1- Sturdivant K/ 4- Franklin J/ 5- Smith D/ 13- Kelly M/    | OT1        | 05:00   | OT1         | 01:36    | 03:24         | 2-3   | -1         | 3   | 1   | 1   | 0   | 0.5000 |
| 1- Sturdivant K/ 3- Coleman D/ 4- Franklin J/ 5- Smith D/ 13- Kelly M/  | OT1        | 01:36   | OT1         | 00:00    | 01:36         | 5-5   | 0          | 1   | 0   | 0   | 1   | 1.7361 |



**Officials:** Clarence Armstrong, John Gaffney, Tim Clougherty

**Notre Dame**

| Lineup   | Quarter On | Time On | Quarter Off | Time Off | Time on Court | Score | Score Diff | Reb | Stl | Tov | Ass | PPP    |
|--|------------|---------|-------------|----------|---------------|-------|------------|-----|-----|-----|-----|--------|
| 3- Wertz T/ 5- Ryan C/ 10- Hammond M/ 14- Laszewski N/ 23- Goodwin D/      | 1          | 20:00   | 1           | 15:20    | 04:40         | 10-11 | -1         | 2   | 1   | 0   | 2   | 1.4535 |
| 1- Starling J/ 10- Hammond M/ 14- Laszewski N/ 23- Goodwin D/ 25- Zona M/  | 1          | 15:20   | 1           | 14:40    | 00:40         | 1-0   | 1          | 1   | 0   | 1   | 0   | 0.6944 |
| 1- Starling J/ 3- Wertz T/ 5- Ryan C/ 14- Laszewski N/ 25- Zona M/         | 1          | 14:40   | 1           | 13:28    | 01:12         | 3-0   | 3          | 1   | 0   | 0   | 1   | 3.0000 |
| 1- Starling J/ 3- Wertz T/ 5- Ryan C/ 23- Goodwin D/ 25- Zona M/           | 1          | 13:28   | 1           | 13:17    | 00:11         | 0-0   | 0          | 0   | 0   | 0   | 0   | 0.0000 |
| 1- Starling J/ 3- Wertz T/ 5- Ryan C/ 10- Hammond M/ 23- Goodwin D/        | 1          | 13:17   | 1           | 11:44    | 01:33         | 2-0   | 2          | 2   | 1   | 0   | 0   | 0.5155 |
| 1- Starling J/ 5- Ryan C/ 10- Hammond M/ 14- Laszewski N/ 23- Goodwin D/   | 1          | 11:44   | 1           | 09:22    | 02:22         | 0-3   | -3         | 1   | 0   | 1   | 0   | 0.0000 |
| 1- Starling J/ 3- Wertz T/ 5- Ryan C/ 14- Laszewski N/ 23- Goodwin D/      | 1          | 09:22   | 1           | 08:48    | 00:34         | 1-0   | 1          | 1   | 0   | 0   | 0   | 2.2727 |
| 1- Starling J/ 3- Wertz T/ 5- Ryan C/ 23- Goodwin D/ 25- Zona M/           | 1          | 08:48   | 1           | 07:40    | 01:08         | 0-0   | 0          | 1   | 0   | 1   | 0   | 0.0000 |
| 1- Starling J/ 3- Wertz T/ 10- Hammond M/ 14- Laszewski N/ 23- Goodwin D/  | 1          | 07:40   | 1           | 06:40    | 01:00         | 1-3   | -2         | 1   | 0   | 1   | 0   | 0.6944 |
| 5- Ryan C/ 10- Hammond M/ 13- Campbell D/ 14- Laszewski N/ 23- Goodwin D/  | 1          | 06:40   | 1           | 05:42    | 00:58         | 1-5   | -4         | 2   | 0   | 0   | 0   | 0.5319 |
| 3- Wertz T/ 5- Ryan C/ 13- Campbell D/ 14- Laszewski N/ 23- Goodwin D/     | 1          | 05:42   | 1           | 05:27    | 00:15         | 1-1   | 0          | 0   | 0   | 0   | 0   | 2.2727 |
| 1- Starling J/ 3- Wertz T/ 5- Ryan C/ 14- Laszewski N/ 23- Goodwin D/      | 1          | 05:27   | 2           | 17:54    | 07:33         | 14-8  | 6          | 8   | 1   | 4   | 1   | 0.9067 |
| 1- Starling J/ 5- Ryan C/ 10- Hammond M/ 14- Laszewski N/ 23- Goodwin D/   | 2          | 17:54   | 2           | 16:37    | 01:17         | 2-1   | 1          | 3   | 0   | 0   | 1   | 1.0000 |
| 1- Starling J/ 3- Wertz T/ 5- Ryan C/ 10- Hammond M/ 14- Laszewski N/      | 2          | 16:37   | 2           | 14:23    | 02:14         | 5-4   | 1          | 0   | 2   | 1   | 1   | 1.0000 |
| 1- Starling J/ 5- Ryan C/ 10- Hammond M/ 14- Laszewski N/ 23- Goodwin D/   | 2          | 14:23   | 2           | 12:16    | 02:07         | 5-7   | -2         | 1   | 0   | 1   | 1   | 1.1261 |
| 1- Starling J/ 3- Wertz T/ 10- Hammond M/ 14- Laszewski N/ 23- Goodwin D/  | 2          | 12:16   | 2           | 11:02    | 01:14         | 0-6   | -6         | 0   | 0   | 0   | 0   | 0.0000 |
| 3- Wertz T/ 5- Ryan C/ 10- Hammond M/ 14- Laszewski N/ 23- Goodwin D/      | 2          | 11:02   | 2           | 10:17    | 00:45         | 0-2   | -2         | 0   | 0   | 0   | 0   | 0.0000 |
| 1- Starling J/ 3- Wertz T/ 5- Ryan C/ 14- Laszewski N/ 23- Goodwin D/      | 2          | 10:17   | 2           | 09:04    | 01:13         | 2-0   | 2          | 1   | 0   | 0   | 0   | 0.6667 |
| 1- Starling J/ 3- Wertz T/ 5- Ryan C/ 13- Campbell D/ 23- Goodwin D/       | 2          | 09:04   | 2           | 08:37    | 00:27         | 1-0   | 1          | 2   | 0   | 0   | 0   | 2.2727 |
| 1- Starling J/ 3- Wertz T/ 13- Campbell D/ 14- Laszewski N/ 23- Goodwin D/ | 2          | 08:37   | 2           | 06:10    | 02:27         | 5-4   | 1          | 1   | 0   | 1   | 2   | 1.6667 |
| 1- Starling J/ 3- Wertz T/ 5- Ryan C/ 14- Laszewski N/ 23- Goodwin D/      | 2          | 06:10   | 2           | 03:36    | 02:34         | 2-8   | -6         | 0   | 0   | 1   | 0   | 0.5000 |
| 1- Starling J/ 5- Ryan C/ 10- Hammond M/ 14- Laszewski N/ 23- Goodwin D/   | 2          | 03:36   | 2           | 02:31    | 01:05         | 2-1   | 1          | 0   | 1   | 0   | 0   | 1.0000 |
| 1- Starling J/ 3- Wertz T/ 5- Ryan C/ 14- Laszewski N/ 23- Goodwin D/      | 2          | 02:31   | OT1         | 00:00    | 07:31         | 15-8  | 7          | 5   | 1   | 2   | 3   | 1.3941 |



Official Basketball Line Up Analysis - Final  
**Georgia Tech at Notre Dame**  
 01/10/23 Purcell Pavilion at the Joyce Center, Notre Dame  
 2022-23 Men's Basketball

**Game Time:** 7:00 PM  
**Game Duration:** 2:17  
**Attendance:** 4,502

**Officials:** Clarence Armstrong, John Gaffney, Tim Clougherty

**Georgia Tech**

| Lineup  | Time  | Score | Score Diff | Pts/Min | Reb | Stl | Tov | Ass | PPP    |
|---|-------|-------|------------|---------|-----|-----|-----|-----|--------|
| 0- Terry L/ 1- Sturdivant K/ 4- Franklin J/ 5- Smith D/ 13- Kelly M/    | 11:40 | 16-20 | -4         | 1.3714  | 8   | 2   | 2   | 2   | 1.0152 |
| 0- Terry L/ 3- Coleman D/ 4- Franklin J/ 13- Kelly M/ 24- Howard R/     | 08:38 | 13-18 | -5         | 1.5058  | 7   | 0   | 3   | 2   | 1.0943 |
| 0- Terry L/ 3- Coleman D/ 4- Franklin J/ 5- Smith D/ 13- Kelly M/       | 07:44 | 6-5   | 1          | 0.7759  | 9   | 2   | 2   | 1   | 0.5000 |
| 1- Sturdivant K/ 4- Franklin J/ 5- Smith D/ 11- Maxwell T/ 13- Kelly M/ | 05:19 | 15-7  | 8          | 2.8213  | 8   | 1   | 1   | 4   | 1.6667 |
| 0- Terry L/ 3- Coleman D/ 4- Franklin J/ 5- Smith D/ 24- Howard R/      | 03:31 | 5-7   | -2         | 1.4218  | 3   | 1   | 2   | 0   | 0.7267 |
| 3- Coleman D/ 4- Franklin J/ 5- Smith D/ 11- Maxwell T/ 13- Kelly M/    | 03:10 | 9-5   | 4          | 2.8421  | 2   | 1   | 0   | 3   | 1.5306 |
| 0- Terry L/ 3- Coleman D/ 4- Franklin J/ 5- Smith D/ 11- Maxwell T/     | 02:20 | 3-1   | 2          | 1.2857  | 2   | 0   | 0   | 1   | 1.0000 |
| 1- Sturdivant K/ 3- Coleman D/ 4- Franklin J/ 5- Smith D/ 13- Kelly M/  | 01:36 | 5-5   | 0          | 3.1250  | 1   | 0   | 0   | 1   | 1.7361 |
| 0- Terry L/ 4- Franklin J/ 5- Smith D/ 13- Kelly M/ 24- Howard R/       | 00:50 | 0-2   | -2         | 0.0000  | 2   | 0   | 3   | 0   | 0.0000 |
| 0- Terry L/ 3- Coleman D/ 4- Franklin J/ 11- Maxwell T/ 13- Kelly M/    | 00:09 | 0-0   | 0          | 0.0000  | 0   | 0   | 1   | 0   | 0.0000 |
| 0- Terry L/ 1- Sturdivant K/ 3- Coleman D/ 11- Maxwell T/ 24- Howard R/ | 00:03 | 0-3   | -3         | 0.0000  | 0   | 0   | 0   | 0   | 0.0000 |



Official Basketball Line Up Analysis - Final  
**Georgia Tech at Notre Dame**  
 01/10/23 Purcell Pavilion at the Joyce Center, Notre Dame  
 2022-23 Men's Basketball

**Game Time:** 7:00 PM  
**Game Duration:** 2:17  
**Attendance:** 4,502

**Officials:** Clarence Armstrong, John Gaffney, Tim Clougherty

**Notre Dame**

| Lineup   | Time  | Score | Score Diff | Pts/Min | Reb | Stl | Tov | Ass | PPP    |
|--|-------|-------|------------|---------|-----|-----|-----|-----|--------|
| 1- Starling J/ 3- Wertz T/ 5- Ryan C/ 14- Laszewski N/ 23- Goodwin D/      | 19:25 | 34-24 | 10         | 1.7511  | 15  | 2   | 7   | 4   | 1.0107 |
| 1- Starling J/ 5- Ryan C/ 10- Hammond M/ 14- Laszewski N/ 23- Goodwin D/   | 06:51 | 9-12  | -3         | 1.3139  | 5   | 1   | 2   | 2   | 0.8272 |
| 3- Wertz T/ 5- Ryan C/ 10- Hammond M/ 14- Laszewski N/ 23- Goodwin D/      | 05:25 | 10-13 | -3         | 1.8462  | 2   | 1   | 0   | 2   | 1.2690 |
| 1- Starling J/ 3- Wertz T/ 13- Campbell D/ 14- Laszewski N/ 23- Goodwin D/ | 02:27 | 5-4   | 1          | 2.0408  | 1   | 0   | 1   | 2   | 1.6667 |
| 1- Starling J/ 3- Wertz T/ 10- Hammond M/ 14- Laszewski N/ 23- Goodwin D/  | 02:14 | 1-9   | -8         | 0.4478  | 1   | 0   | 1   | 0   | 0.3472 |
| 1- Starling J/ 3- Wertz T/ 5- Ryan C/ 10- Hammond M/ 14- Laszewski N/      | 02:14 | 5-4   | 1          | 2.2388  | 0   | 2   | 1   | 1   | 1.0000 |
| 1- Starling J/ 3- Wertz T/ 5- Ryan C/ 10- Hammond M/ 23- Goodwin D/        | 01:33 | 2-0   | 2          | 1.2903  | 2   | 1   | 0   | 0   | 0.5155 |
| 1- Starling J/ 3- Wertz T/ 5- Ryan C/ 23- Goodwin D/ 25- Zona M/           | 01:19 | 0-0   | 0          | 0.0000  | 1   | 0   | 1   | 0   | 0.0000 |
| 1- Starling J/ 3- Wertz T/ 5- Ryan C/ 14- Laszewski N/ 25- Zona M/         | 01:12 | 3-0   | 3          | 2.5000  | 1   | 0   | 0   | 1   | 3.0000 |
| 5- Ryan C/ 10- Hammond M/ 13- Campbell D/ 14- Laszewski N/ 23- Goodwin D/  | 00:58 | 1-5   | -4         | 1.0345  | 2   | 0   | 0   | 0   | 0.5319 |
| 1- Starling J/ 10- Hammond M/ 14- Laszewski N/ 23- Goodwin D/ 25- Zona M/  | 00:40 | 1-0   | 1          | 1.5000  | 1   | 0   | 1   | 0   | 0.6944 |
| 1- Starling J/ 3- Wertz T/ 5- Ryan C/ 13- Campbell D/ 23- Goodwin D/       | 00:27 | 1-0   | 1          | 2.2222  | 2   | 0   | 0   | 0   | 2.2727 |
| 3- Wertz T/ 5- Ryan C/ 13- Campbell D/ 14- Laszewski N/ 23- Goodwin D/     | 00:15 | 1-1   | 0          | 4.0000  | 0   | 0   | 0   | 0   | 2.2727 |