



2021-22 GEORGIA TECH WOMEN'S BASKETBALL

Georgia Tech Athletic Association Communications & Public Relations • WBB Contact: Liz Ryan
Office: 404-894-5445 • Cell: 404-431-9619 • Email: lryan@athletics.gatech.edu • @GTWBB

2021-22 SCHEDULE

| Date | Opponent | Time | TV |
|----------------|-----------------------------|----------------|--------------|
| Nov. 1 | CLAYTON STATE (Exh.) | 6 p.m. | |
| Nov. 9 | at Central Michigan | 6 p.m. | ESPN+ |
| Nov. 11 | KENNESAW STATE | 7 p.m. | ACCNX |
| Nov. 14 | BELMONT | 2 p.m. | ACCNX |
| Nov. 17 | at ETSU | 7 p.m. | TBA |
| Nov. 21 | AUBURN | 4 p.m. | ACCN |
| Nov. 24 | HOFSTRA | 12 p.m. | ACCNX |
| Dec. 1 | at Purdue | 7 p.m. | BTN |
| Dec. 5 | at Georgia | 12 p.m. | SECN |
| Dec. 9 | UCONN | 7 p.m. | ESPN2 |
| Dec. 12 | FURMAN | 1 p.m. | ACCNX |
| Dec. 19 | WAKE FOREST* | 6 p.m. | ACCN |
| Dec. 21 | BOSTON UNIVERSITY | 1 p.m. | ACCNX |
| Dec. 30 | at Pitt* | 6 p.m. | ACCNX |
| Jan. 2 | LOUISVILLE* | 12 p.m. | ACCN |
| Jan. 6 | at Duke* | 7 p.m. | ACCNX |
| Jan. 9 | VIRGINIA* | 4 p.m. | ACCN |
| Jan. 13 | FLORIDA STATE* | 8 p.m. | ACCN |
| Jan. 16 | at Miami* | 2 p.m. | ACCN |
| Jan. 20 | at Syracuse* | 8 p.m. | ACCN |
| Jan. 23 | NORTH CAROLINA* | 12 p.m. | ACCN |
| Jan. 27 | BOSTON COLLEGE* | 7 p.m. | ACCNX |
| Jan. 30 | at Clemson* | 6 p.m. | ACCN |
| Feb. 7 | at NC State* | 6 p.m. | TBA & |
| Feb. 10 | at Virginia Tech* | 8 p.m. | RSN |
| Feb. 13 | CLEMSON* | 12 p.m. | RSN |
| Feb. 17 | NOTRE DAME* | 8 p.m. | ACCN |
| Feb. 20 | MIAMI* | 2 p.m. | ACCNX |
| Feb. 24 | at Florida State* | 6 p.m. | ACCN |
| Feb. 27 | at Wake Forest* | 1 p.m. | ACCNX |
| March 2 | at ACC Tournament | | |

Home games in BOLD

* - ACC Conference Game

! - ACC Tournament (Greensboro, N.C.)

&- ESPN/ESPN2/ESPNU

Georgia Tech (17-9, 12-6 ACC)* vs. Clayton State (10-5, 10-4 PBC)*

Exhibition | 6 p.m. | Atlanta, Ga. | McCamish Pavilion | *2020-21 records



YELLOW JACKETS

Head Coach: Nell Fortner

Record at GT: 37-20 (3rd year)

Career Record: 199-137 (12th year)

LAKERS

Head Coach: Kaleena Coleman

Record at CSU: 98-51 (7th)

Career Record: 98-51 (7th)



STORYLINES

- Georgia Tech returns for its third season under head coach Nell Fortner in 2021-22, looking to carry momentum from a successful 2020-21 campaign. In just two seasons at Georgia Tech, Fortner has compiled a 37-20 mark with the Jackets. As a collegiate head coach, Fortner boasts a 199-137 (.592) record.
- The Yellow Jackets capped last season making its 10th appearance in the NCAA Tournament (first since 2014), earning the No. 5 seed in the Hemisfair Region - tying the second-highest seed in program history. Tech made a run to the Sweet 16 with victories over Stephen F. Austin and West Virginia, marking the second program appearance in the Sweet 16 and first since 2012.
- Tech finished its historic 2020-21 season with a 17-9 overall record and 12-6 Atlantic Coast Conference mark. The Jackets earned the highest-ever seed in the ACC Tournament, securing the No. 3-seed, and advanced to the semifinals for the first time since 2012.
- Georgia Tech returns its core nucleus from the 2020-21 squad. The Jackets return 10 letterwinners from last season and welcomed three newcomers, including freshmen Elizabete Bulane and Carmyn Harrison, and fifth year transfer Digna Strautmene. With its returners, Georgia Tech welcomes back 97.5 percent of its scoring and 97.2 percent of its rebounding from last season.
- Senior Lorela Cubaj returns for her fifth year ("COVID year") in 2021-22. She accounted for 19 percent of the team's scoring and 31.3 percent of the team's rebounding last season. Cubaj was one of two Yellow Jackets to start all 26 games. She averaged a double-double last season behind 12.5 points and 11.5 rebounds per game.
- The team's leading returning rebounder, Cubaj led the ACC and finished 12th in the nation in rebounds per game (11.5 rpg). She produced a team-best 14 double-doubles on the season, ranking first in the ACC and 16th in the nation. Cubaj is on the brink of hitting two major milestones as the Italian native is 28 points and 91 rebounds away from 1,000 in both categories. She would become only the second player in program history to finish with 1,000-career points and 1,000-career rebounds - Bonnie Tate did so in 1977-79 with 1,088 points and a program-record 1,039 rebounds.
- Tech also returns its leading scorer from last season in the 2021 ACC Most Improved Player, Lotta-Maj Lahtinen (15.0 ppg). Lahtinen started all 26 games as a junior and also led the Jackets in assists (90) and steals (50). She averaged 36.5 minutes per game and shot 43.0 percent from the field, including 34.3 percent from three-point range.
- Cubaj and Lahtinen were both named to the 2021-22 Preseason all-ACC team, while the Yellow Jackets were picked to finish third in the preseason ACC poll by both the Blue Ribbon Panel and head coaches.

RETURNERS (2020-21 STATS)

| | | | GP-GS | PPG | RPG | MPG | NOTES |
|----|-----|--|-------|------|------|------|--|
| 00 | G | Loyal McQueen (So., 5-8, Florence, S.C.) | 25-21 | 8.8 | 1.4 | 30.8 | ACC Freshman of the Week (Dec. 14) |
| 3 | G | Sarah Bates (r-Sr., 5-9, Fresno, Calif.) | 11-11 | 6.9 | 1.9 | 29.5 | Shot 34.8 percent from three-point range before season-ending injury |
| 11 | F | Aixa Wone Aranaz (Jr., 6-3, Pamplona, Spain) | 8-4 | 2.5 | 2.6 | 18.7 | Appeared in eight games and started four |
| 13 | F | Lorela Cubaj (5th Yr., 6-4, Terni, Italy) | 26-26 | 12.5 | 11.5 | 33.3 | ACC Co-Defensive Player of the Year; All-ACC First Team |
| 14 | G | Anisa Clark (So., 5-7, McDonough, Ga.) | 3-0 | 1.0 | 0.0 | 1.2 | Hit three-pointer at Wake Forest |
| 15 | G | Ayoyce Carter (So., 5-10, Norcross, Ga.) | 15-0 | 1.9 | 1.1 | 6.7 | Saw game action in 15 contests as freshman |
| 20 | C | Nerea Hermosa (Jr., 6-5, Virtoria, Spain) | 26-21 | 8.1 | 5.0 | 25.8 | Shot 55.9 percent from the field |
| 24 | G/F | Eylia Love (So., 6-1, Kansas City, Kansas) | 26-2 | 4.5 | 3.2 | 19.1 | Averaged 19.1 minutes per game as a freshman |
| 31 | G | Lotta-Maj Lahtinen (Sr., 5-9, Helsinki, Finland) | 26-26 | 15.0 | 4.6 | 36.5 | ACC Most Improved Player; All-ACC First & Second Team |
| 41 | G | Kierra Fletcher (5th Yr., 5-9, Warren, Mich.) | 21-19 | 13.0 | 5.5 | 35.2 | Second on team in scoring (13.0 ppg) and assists (78) |

NEWCOMERS

| | | |
|----|---|---|
| 10 | G | Elizabete Bulane (Fr., 5-7, Adazi, Latvia) |
| 33 | F | Carmyn Harrison (Fr., 6-2, Memphis, Tenn.) |
| 45 | F | Digna Strautmene (5th Yr., 6-2, Riga, Latvia) |

QUICK FACTS

GENERAL

Full Name: Georgia Institute of Technology
 Location: Atlanta, Ga.
 Founded: 1885
 Enrollment: 39,772
 Nicknames: Ramblin' Wreck, Yellow Jackets
 Colors: Old Gold and White
 Arena (Cap.): McCamish Pavilion (8,600)
 President: Dr. Ángel Cabrera
 Athletics Director: Todd Stansbury
 Faculty Ath. Representative: Dr. Baratunde Cole
 Sport Administrator: Joeleen Akin

COACHING STAFF

Head Coach: Nell Fortner
 Years at Tech: 3rd
 Twitter: @NellOnWheels
 Career Record: 199-137 (.592)
 Record at Tech: 37-20 (.645)/2 years
 Alma Mater: Texas, 1982
 Associate Head Coach Tasha Butts
 Assistant Coaches: Blanche Alverson, Murriel Page
 Director of WBB Ops: Ashlee Villarreal

TEAM INFORMATION

2020-21 Overall Record: 17-9
 2020-21 ACC Record: 12-6
 2020-21 Home Record: 9-3
 2020-21 Road Record: 5-4
 2020-21 Neutral Record: 3-2
 Letterwinners R/L: 10/1
 Starters R/L: 5/0
 Newcomers 3

HISTORY

First Year: 1974-75 (48th season)
 Overall Record: 723-651 (.526)
 ACC Record: 230-377 (.379)
 ACC Tournament Record: 20-42
 Postseason Record: 23-25 (NCAA, WNIT & AIAW)
 NCAA Appearances/Last: 10, 2021
 NCAA Tournament Record: 7-10
 WNIT Record: 14-7
 All-Time Home Record: 389-219
 All-Time Road Record: 180-290
 All-Time Neutral Record: 85-84

ATHLETIC COMMUNICATIONS & PUBLIC RELATIONS

WBB Contact: Liz Ryan
 Email: lryan@athletics.gatech.edu
 Phone: 404-894-5445
 Cell Phone: 404-431-9619
 Press Row: 404-894-5458
 Website: www.ramblinwreck.com

It is incorrect to call it "Georgia Tech University."

**Officially, it's The Georgia Institute of Technology.
 But just call us "Georgia Tech."**

2021-22 GEORGIA TECH WOMEN'S BASKETBALL ROSTER

Numerical

| No. | Name | YR | HT | POS | Hometown | High School/Previous School |
|-----|--------------------|---------|------|-----|---------------------|------------------------------|
| 00 | Loyal McQueen | So. | 5-8 | G | Florence, S.C. | Wilson |
| 3 | Sarah Bates | r-Sr. | 5-9 | G | Fresno, Calif. | Clovis West/Kansas State |
| 10 | Elizabete Bulane | Fr. | 5-7 | G | Adazi, Latvia | Riga Commercial School |
| 11 | Aixa Wone Aranaz | Jr. | 6-3 | F | Pamplona, Spain | IES Joaquim Blume/Ohio State |
| 13 | Lorela Cubaj | 5th Yr. | 6-4 | F | Terni, Italy | Istituto Paritario G. Parini |
| 14 | Anisa Clark | So. | 5-7 | G | McDonough, Ga. | Union Grove |
| 15 | Avyonce Carter | So. | 5-10 | G | Norcross, Ga. | Wesleyan |
| 20 | Nerea Hermosa | Jr. | 6-5 | C | Vitoria, Spain | IES Joaquim Blume |
| 24 | Eylia Love | So. | 6-1 | G/F | Kansas City, Kansas | Olathe North |
| 31 | Lotta-Maj Lahtinen | Sr. | 5-7 | G | Helsinki, Finland | Makelanrinne Sports |
| 33 | Carmyn Harrison | Fr. | 6-2 | F | Memphis, Tenn. | Hutchison School |
| 41 | Kierra Fletcher | 5th Yr. | 5-9 | G | Warren, Mich. | Warren Cousino |
| 45 | Digna Strautmane | 5th Yr. | 6-2 | F | Riga, Latvia | Syracuse |

Alphabetical

| No. | Name | YR | HT | POS | Hometown | High School/Previous School |
|-----|--------------------|---------|------|-----|---------------------|------------------------------|
| 11 | Aixa Wone Aranaz | Jr. | 6-3 | F | Pamplona, Spain | IES Joaquim Blume/Ohio State |
| 3 | Sarah Bates | r-Sr. | 5-9 | G | Fresno, Calif. | Clovis West/Kansas State |
| 10 | Elizabete Bulane | Fr. | 5-7 | G | Adazi, Latvia | Riga Commercial School |
| 15 | Avyonce Carter | So. | 5-10 | G | Norcross, Ga. | Wesleyan |
| 14 | Anisa Clark | So. | 5-7 | G | McDonough, Ga. | Union Grove |
| 13 | Lorela Cubaj | 5th Yr. | 6-4 | F | Terni, Italy | Istituto Paritario G. Parini |
| 41 | Kierra Fletcher | 5th Yr. | 5-9 | G | Warren, Mich. | Warren Cousino |
| 33 | Carmyn Harrison | Fr. | 6-2 | F | Memphis, Tenn. | Hutchison School |
| 20 | Nerea Hermosa | Jr. | 6-5 | C | Vitoria, Spain | IES Joaquim Blume |
| 31 | Lotta-Maj Lahtinen | Sr. | 5-7 | G | Helsinki, Finland | Makelanrinne Sports |
| 24 | Eylia Love | So. | 6-1 | G/F | Kansas City, Kansas | Olathe North |
| 00 | Loyal McQueen | So. | 5-8 | G | Florence, S.C. | Wilson |
| 45 | Digna Strautmane | 5th Yr. | 6-2 | F | Riga, Latvia | Syracuse |

Head Coach: Nell Fortner (Texas, 1982), 3rd season

Associate Head Coach: Tasha Butts (Tennessee, 2004), 3rd season

Assistant Coach: Blanche Alverson (Auburn, 2013), 3rd season

Assistant Coach: Murriel Page (Florida, 1998), 2nd season

Chief of Staff: Mickie DeMoss (Louisiana Tech, 1977)

Director of Operations: Ashlee Villarreal (Texas Tech, 2017)

Director of Video: Sydney Durrach (Maryland, 2015)

Recruiting Operations: Cortnee Walton (Louisville, 2015)

Athletic Trainer: Rachel Matthews

Player Development Coach: Shannon Jackson

HOW TO SAY IT

| | | | |
|------------------|-------------------------------------|--------------------|------------------------|
| Aixa Wone Aranaz | eye-sha wone (like moan) ah-duh-nas | Lotta-Maj Lahtinen | LOW-tah MY LAW-tin-in |
| Elizabete Bulane | eeliza-bet-uh boo-law-n-neh | Eylia Love | e-lee-uh |
| Avyonce Carter | ah-vee-on-ce | Digna Strautmane | dig-nuh SSTROWT-ma-neh |
| Anisa Clark | a-knee-suh | | |
| Lorela Cubaj | low-rell-UH coo-BYE | | |
| Nerea Hermosa | nu-RAY-uh her-MOS-a | | |

BY CLASS:

Super Seniors (3): Lorela Cubaj, Kierra Fletcher, Digna Strautmane
 Seniors (2): Sarah Bates, Lotta-Maj Lahtinen
 Juniors (2): Aixa Wone Aranaz, Nerea Hermosa
 Sophomores (4): Loyal McQueen, Anisa Clark, Eylia Love
 Freshmen (2): Elizabete Bulane, Carmyn Harrison

BY STATE/COUNTRY:

California: Sarah Bates
 Finland: Lotta-Maj Lahtinen
 Georgia: Anisa Clark, Avyonce Carter
 Italy: Lorela Cubaj
 Kansas: Eylia Love
 Latvia: Elizabete Bulane, Digna Strautmane
 Michigan: Kierra Fletcher
 South Carolina: Loyal McQueen
 Spain: Aixa Wone Aranaz, Nerea Hermosa
 Tennessee: Carmyn Harrison

BY POSITION:

Guards: Sarah Bates, Elizabete Bulane, Avyonce Carter, Anisa Clark, Kierra Fletcher, Lotta-Maj Lahtinen, Eylia Love, Loyal McQueen
 Forwards: Aixa Wone Aranaz, Lorela Cubaj, Carmyn Harrison, Digna Strautmane
 Center: Nerea Hermosa



SERIES HISTORY

Overall: Georgia Tech leads 1-0
Current Streak: W1
Home Games: Georgia Tech leads 1-0
Last: Oct. 30, 2019 - GT 73, Clayton State 35
Away Games: N/A
Last: N/A
Neutral Sites: First Meeting

LAST MEETINGS VS. CLAYTON STATE

Oct. 30, 2019 h W 73-35

TEAM COMPARISON



| | | | |
|---------------------------------|------|---------------------------------|------|
| Record | 0-0 | Record | 0-0 |
| Conference Record | 0-0 | Conference Record | 0-0 |
| Points per game. | 0.0 | Points per game. | 0.0 |
| Scoring Margin | 0.0 | Scoring Margin | 0.0 |
| FG Percentage. | .000 | FG Percentage. | .000 |
| 3-pt FG Percentage | .000 | 3-pt FG Percentage | .000 |
| 3-pt FG Made Per Game | 0.0 | 3-pt FG Made Per Game | 0.0 |
| FT Percentage | .000 | FT Percentage | .000 |
| Rebounds per game. | 0.0 | Rebounds per game. | 0.0 |
| Rebounding Margin | 0.0 | Rebounding Margin | 0.0 |
| Assists Per Game. | 0.0 | Assists Per Game. | 0.0 |
| Turnovers Per Game. | 0.0 | Turnovers Per Game. | 0.0 |
| Turnover Margin. | 0.0 | Turnover Margin. | 0.0 |
| Steals Per Game | 0.0 | Steals Per Game | 0.0 |
| Blocks Per Game | 0.0 | Blocks Per Game | 0.0 |

GEORGIA TECH'S LAST 11 POSTSEASONS

| YEAR | OVERALL | ACC TOURN. | POSTSEASON |
|---------|---------|------------|-----------------|
| 2020-21 | 17-9 | 1-1 (SF) | NCAA |
| 2019-20 | 20-11 | 1-1 (QF) | Canceled |
| 2018-19 | 17-13 | 0-1 (R2) | Declined WNIT |
| 2017-18 | 20-14 | 1-1 (R2) | WNIT 3rd Round |
| 2016-17 | 22-15 | 1-1 (R2) | WNIT Runners-Up |
| 2015-16 | 20-13 | 1-1 (QF) | WNIT 2nd Round |
| 2014-15 | 19-15 | 1-1 (R2) | WNIT 2nd Round |
| 2013-14 | 20-12 | 1-1 (QF) | NCAA 1st Round |
| 2012-13 | 14-16 | 0-1 (R1) | N/A |
| 2011-12 | 26-9 | 2-1 (CG) | NCAA Sweet 16 |
| 2010-11 | 24-11 | 2-1 (SF) | NCAA 2nd Round |

ACC PREDICTIONS

After finishing third in the Atlantic Coast Conference last season, Georgia Tech was slated to finish third by both the Blue Ribbon Panel (media) and league's head coaches for 2021-22. It marks the eighth time the Yellow Jackets have been predicted to finish in the top five since 1991 - and the second time they were predicted to finish third. Tech was also predicted to finish third in 2012 following its first trip to the NCAA Tournament Sweet 16.

In addition to the preseason predicted order of finish, the ACC announced its preseason All-ACC Teams. Tech saw two placed on the preseason teams - Lorela Cubaj and Lotta-Maj Lahtinen. Both were All-ACC selections at the conclusion of the 2020-21 season.

NATIONALLY RANKED YELLOW JACKETS

In the Preseason AP Poll released on Oct. 19, Georgia Tech was tabbed No. 17 nationally. It marked the third time in program history the Jackets have been ranked in the nation's preseason top 25 and first since 2012. Georgia Tech was one of five teams from the ACC in the top 25, joined by No. 5 NC State, No. 6 Louisville, No. 16 Florida State and No. 24 Virginia Tech. South Carolina sat atop the preseason top 25.

APPROACHING A PAIR OF MILESTONES

Georgia Tech's Lorela Cubaj is on the verge of a pair of career milestones. The fifth-year needs only 28 points and 91 rebounds to reach 1,000 in both categories.

She would become only the second player in Georgia Tech women's basketball history to record 1,000-career points and 1,000-career rebounds. Bonnie Tate did so in 1977-79 with 1,088 points and a program-record 1,039 rebounds.

Currently with 909 career rebounds, Cubaj needs 131 rebounds to set a new program record at Georgia Tech.

BE ON THE LOOKOUT

Lorela Cubaj was named one of 20 power forwards to the 2022 Katrina McClain Award watch list. Named after the two-time All-American and 1987 National Player of the Year, the Katrina McClain Award recognizes top power forwards in women's NCAA Division I college basketball.

The watch list will be narrowed down to 10 candidates in late January, and in late February to just five. In March, the five finalists will be presented to Ms. McClain and the Hall of Fame's selection committee where a winner will be announced.

WHAT'S NEW?

Even though the Yellow Jackets return its core nucleus from last season, Tech welcomed three newcomers to the roster.

Elizabete Bulane - Played club basketball with BS Riga Jugla... Was team captain of club team... Helped lead club teams to championships from 2015-18... Named MVP four times with club team (2015-18)... All-star 5 in 2015-16 and twice-named all-star 5 in 2018-19.

Carmyn Harrison - Tabbed 2021 Daily Memphian Player of the Year... Five-time all-region (2016-21)... Tabbed all-state three times (2018-21)... GBB Region Champions in 2018-19 and 2020-21... GBB State Champion in 2020-21... High school team captain... Participated in TN BCAT All-Star Game... Also competed in discus/shotput for three seasons... 2018-19 discus and shotput region champion.

Digna Strautmene - Started all 120 games played in at Syracuse from 2018-21... Averaged 29.7 minutes, 9.0 points and 5.3 rebounds per game in four seasons... Shot 39.4 percent (416-1057) from the floor and 77.1 percent (84-109) from the free throw line... Scored a career-high 25 points at Boston College (1/28/18), hitting 10-for-16 from the field and 5-for-9 from 3-point range... Set a personal-best with 13 rebounds against Lincoln (PA) (12/2/20)... Blocked a career-high seven shots against Virginia (3/5/20)... Has long shooting range having hit five 3-pointers in four different outings... Member of Latvian National Team... Helped U20 National Team place 11th at 2018 FIBA U20

ACC PRESEASON PREDICTIONS

2021-22 Predicted Order of Finish

| Blue Ribbon Panel | Coaches |
|------------------------|------------------------|
| 1. NC State (50) | 1. NC State (14) |
| 2. Louisville (7) | 2. Louisville (1) |
| 3. Georgia Tech | 3. Georgia Tech |
| 4. Virginia Tech | 4. Virginia Tech |
| 5. Florida State | 5. Florida State |
| 6. Notre Dame | 6. Notre Dame |
| 7. North Carolina | 7. North Carolina |
| 8. Duke | 8. Duke |
| 9. Miami | 9. Miami |
| 10. Clemson | 10. Clemson |
| 11. Boston College | 11. Boston College |
| 12. Wake Forest | 12. Syracuse |
| 13. Syracuse | 13. Wake Forest |
| 14. Pitt | 14. Pitt |
| 15. Virginia | 15. Virginia |

Blue Ribbon Panel Preseason Player of the Year

Elissa Cunane - NC State, Sr., C

Coaches Preseason Player of the Year

Elissa Cunane - NC State, Sr., C

2021-22 Blue Ribbon Panel Preseason All-ACC Team

Taylor Soule - Boston College
 Delicia Washington - Clemson

Lorela Cubaj - Georgia Tech Lotta-Maj Lahtinen - Georgia Tech

Hailey van Lith - Louisville
 Jakia Brown-Turner - NC State
 Elissa Cunane - NC State
 Maddy Westbeld - Notre Dame
 Elizabeth Kitley - Virginia Tech
 Aisha Sheppard - Virginia Tech

2021-22 Head Coaches Preseason All-ACC Team

Taylor Soule - Boston College
 Delicia Washington - Clemson

Lorela Cubaj - Georgia Tech Lotta-Maj Lahtinen - Georgia Tech

Hailey Van Lith - Louisville
 Jakia Brown-Turner - NC State
 Elissa Cunane - NC State
 Maddy Westbeld - Notre Dame
 Elizabeth Kitley - Virginia Tech
 Aisha Sheppard - Virginia Tech

2021-22 Blue Ribbon Panel Newcomer Watch List

Payton Verhulst - Louisville
 Teonni Key - North Carolina
 Diamond Johnson - NC State
 Olivia Miles - Notre Dame
 Sonia Citron - Notre Dame

2021-22 Coaches Newcomer Watch List

Celeste Taylor - Duke
 Payton Verhulst - Louisville
 Diamond Johnson - NC State
 Olivia Miles - Notre Dame
 Sonia Citron - Notre Dame

TOP 25 POLLS

ASSOCIATED PRESS

- 1 South Carolina
- 2 UConn**
- 3 Stanford
- 4 Maryland
- 5 NC State**
- 6 Louisville**
- 7 Baylor
- 8 Indiana
- 9 Iowa
- 10 Oregon
- 11 Michigan
- 12 Iowa State
- 13 Kentucky
- 14 Oregon State
- 15 Tennessee
- 16 Florida State**
- 17 Ohio State
- 17 Georgia Tech**
- 19 West Virginia
- 20 UCLA
- 21 South Florida
- 22 Arizona
- 23 Texas A&M
- 24 Virginia Tech**
- 25 Texas

USA TODAY COACHES

Bold = 2021-22 Opponent

WINS AGAINST RANKED FOES

| | | | |
|----------------|--------------------------|---|------------|
| Jan. 6, 1987 | #13 Maryland | H | 81-80 (OT) |
| Jan. 21, 1989 | #13 Virginia | H | 105-80 |
| Jan. 2, 1990 | #6 NC State | H | 79-78 |
| Jan. 18, 1990 | #15 Maryland | H | 70-68 |
| Jan. 17, 1992 | #16 NC State | H | 83-72 |
| Feb. 4, 1992 | at #18 Clemson | A | 59-57 |
| March 7, 1992 | vs. #4 Maryland | N | 68-67 |
| March 8, 1992 | vs. #18 Clemson | N | 74-73 |
| Jan. 15, 1993 | #15 North Carolina | H | 73-63 |
| Jan. 25, 1996 | #18 Clemson | H | 55-38 |
| Feb. 25, 1996 | at #17 Clemson | A | 72-62 |
| Jan. 5, 1997 | #7 NC State | H | 73-72 |
| Feb. 13, 1997 | #9 Virginia | H | 72-60 |
| Dec. 6, 1997 | #9 Virginia | H | 84-65 |
| Dec. 5, 1998 | at #17/14 NC State | A | 74-73 |
| Jan. 24, 1999 | #7/6 North Carolina | H | 91-84 |
| Jan. 13, 2000 | #15/12 North Carolina | H | 55-44 |
| Feb. 24, 2000 | at #14/11 NC State | A | 69-52 |
| March 4, 2000 | vs. #15/14 NC State | N | 71-62 |
| Jan. 7, 2001 | #25 Virginia | H | 70-65 |
| Feb. 8, 2001 | at #24 Virginia | A | 87-70 |
| Jan. 17, 2002 | at #17/15 North Carolina | A | 81-62 |
| Dec. 27, 2002 | vs. #24/22 Georgia | N | 55-49 |
| Dec. 3, 2004 | #6/6 Georgia | H | 55-49 |
| Feb. 1, 2007 | #4/4 Maryland | H | 77-72 |
| Dec. 3, 2008 | #21/24 Michigan St. | H | 70-57 |
| Jan. 22, 2009 | #2/3 North Carolina | H | 66-62 |
| March 1, 2009 | #22/19 Virginia | H | 74-66 |
| Dec. 5, 2010 | #21/22 Georgia | H | 69-53 |
| Jan. 6, 2011 | #8/8 North Carolina | H | 71-70 |
| Feb. 24, 2011 | at #13/16 North Carolina | A | 64-57 |
| March 4, 2011 | vs. #13/15 Maryland | N | 70-64 |
| Feb. 12, 2012 | at #23/RV North Carolina | A | 56-64 |
| March 20, 2012 | vs. #17/16 Georgetown | N | 76-64 |
| Feb. 6, 2014 | #13/11 North Carolina | H | 94-91 |
| Feb. 26, 2015 | #16/17 Duke | H | 71-62 |
| Jan. 15, 2017 | #24 Syracuse | H | 75-66 |
| Nov. 18, 2018 | #14 Georgia | H | 63-53 |
| Jan. 20, 2019 | #12/12 Syracuse | H | 65-55 |
| Jan. 2, 2020 | #23/RV Miami | H | 61-54 |
| Jan. 9, 2020 | #11/11 Florida State | A | 67-52 |
| Feb. 16, 2020 | #4/4 NC State | A | 65-61 |
| Feb. 23, 2020 | #17/18 Florida State | H | 65-62 |
| March 23, 2021 | #17/20 West Virginia | N | 73-56 |

LAST WIN VS. RANKED OPPONENT

Tech collected its first win over a ranked opponent in 2020-21 in style, defeating No. 17/20 West Virginia in the NCAA Tournament second round, 73-56, to secure a spot in the Sweet 16.

European Championships in Hungary... Made history with the Latvian Senior National Team as the first team to qualify and compete at the FIBA Women's World Cup in Tenerife, Spain... Was the youngest member on the Senior National Team at age 19... Helped Latvia place 8th at the FIBA U20 European Championship in 2017, averaging 18.7 points, 7.4 rebounds and 2.1 assists per contest... Represented Latvia at the 2017 FIBA U19 World Cup in Italy... Participated in 2016 FIBA U20 European Championship... A five-star recruit ranked No. 22 player in her class by ESPN HoopGurlz.

STRENGTH OF SCHEDULE

Returning to a full schedule in 2021-22, Georgia Tech will face a competitive slate of opponents. On tap for the season, the Yellow Jackets are scheduled to face 12 teams that went to postseason in 2020-21, including 11 that made an appearance in the NCAA Tournament. Three of the 11 NCAA Tournament teams reached the Sweet 16 or further.

Also making a trip to Atlanta, preseason ranked No. 2 UConn visits on Dec. 9 for only the second time in program history. The Hokies and Yellow Jackets have met twice before, with UConn taking both decisions. UConn last visited ATL on Nov. 21, 2010.

HOME SWEET HOME

All time, the Yellow Jackets are 387-218 (.620) when playing at home. The Jackets have won the last seven-consecutive home openers dating back to the 2012-13 season.

ALL OVER THE WORLD

Georgia Tech's roster boasts players from six different states and four different countries. Fifth years Lorela Cubaj (Terni, Italy) and Digna Strautmene (Riga, Latvia), junior Lotta-Maj Lahtinen (Helsinki, Finland), sophomores Nerea Hermosa (Vitoria, Spain) and Aixa Wone Aranz (Pamplona, Spain), and freshman Elizabete Bulane (Adazi, Latvia) are Tech's international student-athletes.

HOW DO YOU SAY...

Between Tech's six international players, several different languages are spoken. Check out who can speak what languages below:

Aixa Wone Aranz (Pamplona, Spain) - English, Spanish, Catalan, Basque

Digna Strautmene (Riga, Latvia) - Latvian, English

Elizabete Bulane (Adazi, Latvia) - Latvian, English, Russian (little)

Lorela Cubaj (Terni, Italy) - Italian, English, Spanish, Albanian

Lotta-Maj Lahtinen (Helsinki, Finland) - Finnish, English, Swedish, Russian

Nerea Hermosa (Vitoria, Spain) - French, Spanish, English, Catalan, Basque

LET'S REWIND TO 2020-21 SHALL WE...

GOING DANCING

Georgia Tech returned to the NCAA Tournament for the 10th time in program history - and first since 2014 - in 2020-21. The Jackets concluded a historic season making its second trip to the Sweet 16. The Yellow Jackets are 7-10 when dancing in the tournament, including 2021, tying its longest run made in 2011-12, advancing to the Sweet 16.

Tech made its first NCAA Tournament appearance in 1992-93 after posting a 16-10 record and 8-8 ACC ledger. The Jackets did not return to the Big Dance for 10 years, making its next trip in 2003, but then earned a berth in every tournament from 2007-2012.

CAREER DOUBLE-DOUBLES

LORELA CUBAJ - 23

- 13 pts, 11 rebs vs. Duke - 1/10/18
- 17 pts, 13 rebs vs. Bethune-Cookman - 3/15/18
- 13 pts, 12 rebs vs. Wofford - 12/30/18
- 17 pts, 12 rebs vs. UNC - 1/31/19
- 12 pts, 12 rebs vs. Georgia State - 11/20/19
- 16 pts, 12 rebs vs. Seton Hall - 11/28/19
- 20 pts, 11 rebs vs. ETSU - 12/15/19
- 10 pts, 10 rebs vs. Miami - 1/2/20
- 13 pts, 11 rebs vs. Florida State - 2/23/20
- 20 pts, 13 rebs vs. Georgia - 11/29/20
- 18 pts, 16 rebs vs. Tulane - 12/3/20
- 16 pts, 13 rebs at Notre Dame - 12/13/20
- 14 pts, 20 rebs at Clemson - 1/7/21
- 10 pts, 13 rebs vs. Virginia Tech - 1/10/21
- 11 pts, 15 rebs at Wake Forest - 1/21/21
- 14 pts, 14 rebs at Miami - 1/28/21
- 12 pts, 12 rebs vs. Clemson - 2/4/21
- 11 pts, 14 rebs vs. Wake Forest - 2/7/21
- 14 pts, 10 rebs at Florida State - 2/18/21
- 12 pts, 18 rebs vs. Clemson - 3/5/21
- 17 pts, 11 rebs vs. NC State - 3/6/21
- 14 pts, 10 rebs vs. Stephen F. Austin - 3/21/21
- 21 pts, 12 rebs vs. West Virginia - 3/23/21

KIERRA FLETCHER - 4

- 11 pts, 14 rebs vs. Seton Hall - 12/20/18
- 13 pts, 11 rebs vs. Clemson - 2/21/19
- 15 pts, 13 rebs vs. Rice - 12/21/19
- 17 pts, 13 rebs at Virginia Tech - 2/13/20

LOTTA-MAJ LAHTINEN - 3

- 18 pts, 12 rebs at Clemson - 3/1/20
- 14 pts, 10 rebs vs. Georgia State - 11/25/20
- 30 pts, 11 rebs vs. NC State - 12/31/20

NEREA HERMOSA - 1

- 14 pts, 10 rebs at Boston College - 2/21/21

LARGEST HOME CROWDS

| | | | | |
|-----|----------|-----------------|-----------|-------|
| 1. | 11/21/10 | #1/1 UConn | L, 71-51 | 7,325 |
| 2. | 2/8/95 | #11/11 UNC | L, 84-62 | 6,621 |
| 3. | 12/5/08 | Georgia | W, 57-42 | 6,212 |
| 4. | 2/7/99 | #9/11 Duke | L, 74-73 | 6,058 |
| 5. | 11/11/12 | #20/16 Tenn. | L, 54-71 | 5,517 |
| 6. | 1/23/93 | #10 Virginia | L, 107-81 | 4,158 |
| 7. | 2/21/93 | Wake Forest | W, 85-72 | 4,136 |
| 8. | 2/16/03 | Virginia | L, 56-54 | 4,044 |
| 9. | 1/26/02 | Clemson | W, 83-78 | 3,965 |
| 10. | 12/13/09 | MVSU | W, 89-41 | 3,864 |
| 11. | 1/20/96 | #7/7 Virginia | L, 79-58 | 3,849 |
| 12. | 1/8/04 | #1/2 Duke | L, 45-77 | 3,833 |
| 13. | 2/11/96 | Wake Forest | W, 75-65 | 3,827 |
| 14. | 2/18/99 | #17/17 Virginia | L, 73-86 | 3,812 |
| 15. | 1/13/03 | #1/1 Duke | L, 59-79 | 3,592 |
| 16. | 1/9/00 | #14/10 Duke | L, 45-64 | 3,512 |
| 17. | 2/27/94 | Duke | W, 64-56 | 3,385 |
| 18. | 2/10/08 | #3/3 UNC | L, 61-75 | 3,257 |

In 2012, Georgia Tech was the No. 4 seed and defeated Sacred Heart and Georgetown to secure its first-ever spot in the Sweet 16.

In 2021, the Yellow Jackets advanced to second round action for the fifth time in program history, and first since 2012. Tech made only its second-ever program appearance in the Sweet 16, having made its first in 2012.

KEEP ON DANCING

With Tech's at-large bid into the 2021 NCAA Tournament, head coach Nell Fortner became just one of 15 all-time head coaches to take three different teams to the NCAA Tournament. Fortner guided Purdue to the 1997 NCAA Tournament and led Auburn to a pair of appearances in 2008 and 2009. She is 4-3 when competing in the NCAA Tournament, leading the Boilermakers and Tigers to second round action and GT to the Sweet 16.

ACC POSTSEASON HONORS

2020-21 Blue Ribbon Panel Awards

ACC Player of the Year: Dana Evans, Sr., G, Louisville
 ACC Freshman of the Year: Kamilla Cardoso, Fr., C, Syracuse
 ACC Coach of the Year: Nell Fortner, Georgia Tech

Blue Ribbon Panel

All-ACC First Team

Lorela Cubaj, Sr., F, Georgia Tech
Lotta-Maj Lahtinen, Jr., G, Georgia Tech

Dana Evans, Sr., G, Louisville
 Elissa Cunane, Jr., C, NC State
 Jakia Brown-Turner, So., W, NC State
 Maddy Westbeld, Fr., F, Notre Dame
 Kamilla Cardoso, Fr., C, Syracuse
 Elizabeth Kitley, So., C, Virginia Tech
 Aisha Sheppard, Sr., G, Virginia Tech
 Ivana Raca, Sr., F, Wake Forest

All-ACC Second Team

Taylor Soule, Jr., F, Boston College
 Delicia Washington, Sr., G, Clemson
 Morgan Jones, Jr., G, Florida State
 Kayla Jones, Sr., F, NC State
 Gina Conti, Sr., G, Wake Forest

Honorable Mention

Janelle Bailey, Sr., C, North Carolina
 Raina Perez, Gr., G, NC State
 Jayla Everett, Jr., G, Pitt
 Kiara Lewis, Sr., G, Syracuse
 Tiana Mangakahia, Gr., G, Syracuse

2020-21 Head Coaches Awards

ACC Player of the Year: Dana Evans, Sr., G, Louisville
 ACC Freshman of the Year: Maddy Westbeld, Fr., F, Notre Dame

ACC Coach of the Year: Wes Moore, NC State

ACC Co-Defensive Players of the Year: Lorela Cubaj, Sr., F, Georgia Tech;

Kamilla Cardoso, Fr., C, Syracuse

ACC Co-Sixth Players of the Year: Jada Boyd, So., F, NC State;

Emily Engstler, Jr., G/F, Syracuse

ACC Most Improved Player: Lotta-Maj Lahtinen, Jr., G, Georgia Tech

Head Coaches Awards

All-ACC First Team

Taylor Soule, Jr., F, Boston College
 Morgan Jones, Jr., G, Florida State
Lorela Cubaj, Sr., F, Georgia Tech
 Dana Evans, Sr., G, Louisville
 Jakia Brown-Turner, So., W, NC State
 Elissa Cunane, Jr., C, NC State
 Kayla Jones, Sr., F, NC State
 Elizabeth Kitley, So., C, Virginia Tech
 Aisha Sheppard, Sr., G, Virginia Tech
 Ivana Raca, Sr., F, Wake Forest

All-ACC Second Team

Delicia Washington, Sr., G, Clemson
Lotta-Maj Lahtinen, Jr., G, Georgia Tech
 Maddy Westbeld, Fr., F, Notre Dame
 Kamilla Cardoso, Fr., C, Syracuse
 Gina Conti, Sr., G, Wake Forest

Honorable Mention

Janelle Bailey, Sr., C, North Carolina
 Jayla Everett, Jr., G, Pitt
 Tiana Mangakahia, Gr., G, Syracuse

All-Defensive Team

Marmelle Garraud, Jr., G, Boston College
Lorela Cubaj, Sr., F, Georgia Tech
 Morgan Jones, Jr., G, Florida State
 Mykasa Robinson, Jr., G, Louisville
 Kamilla Cardoso, Fr., C, Syracuse

All-Freshman Team (Blue Ribbon & Head Coaches)

Gabby Elliott, G, Clemson
 Hailey Van Lith, G, Louisville
 Olivia Cochran, F, Louisville
 Deja Kelly, G, North Carolina
 Maddy Westbeld, F, Notre Dame
 Kamilla Cardoso, C, Syracuse
 Georgia Amooore, G, Virginia Tech
 Jewel Spear, G, Wake Forest

Fortner is the only active ACC coach to have led three different teams to the NCAA Tournament. Amanda Butler (Clemson), Katie Meier (Miami) and Wes Moore (NC State) have each guided two teams dancing into March.

Amongst head coaches in San Antonio for the 2021 NCAA Tournament, Fortner was joined by elite company in the coaching ranks as Kelly Graves (Oregon), Joe McKeown (Northwestern), Katie Abrahamson-Henderson (UCF), Kristy Curry (Alabama), C. Vivian Stringer (Rutgers) and Gary Blair (Texas A&M) have all guided three teams to NCAA Tournament action.

TECH IN THE SEMIS

For the first time since 2012, Georgia Tech women's basketball advanced to the ACC Tournament semifinals. After earning a double-bye, courtesy of securing the No. 3 seed, the highest seed in program history - the Jackets defeated Clemson in the quarterfinals to secure just its seventh appearance in the semifinals. Tech led second-seeded and third-ranked NC State heading into the final quarter, but the Wolfpack outscored the Jackets 23-13 in the final 10 minutes to take the win. Lorela Cubaj recorded her second-straight double-double in the ACC Tournament (17 points, 11 rebounds), to earn a spot on the All-ACC Tournament second team. Cubaj averaged 14.5 points and 14.5 rebounds per game in Tech's two tournament contests.

In the tournament, four Yellow Jackets averaged double-figures between the two games. Senior Kierra Fletcher led the way (15.5 ppg), followed by Cubaj (14.5 ppg), Lotta-Maj Lahtinen (13.0 ppg) and Loyal McQueen (10.0 ppg).

JACKETS HAUL IN ACCOLADES

Before the Yellow Jackets opened the ACC Tournament, they hauled in a few ACC honors. Marking program firsts, the Jackets collected a trio of prestigious first-time honors (indicated below):

- Nell Fortner - ACC Coach of the Year (Blue Ribbon Panel)
- Lorela Cubaj - ACC Co-Defensive Player of the Year
- Lotta-Maj Lahtinen - ACC Most Improved Player

Additionally, Cubaj earned all-ACC first team accolades by both the Blue Ribbon Panel and head coaches. The senior forward from Terni, Italy also placed on the all-Defensive Team.

Teammate Lahtinen also picked up all-conference honors, being named all-ACC first team by the Blue Ribbon Panel and all-ACC second team by the head coaches.

With Cubaj and Lahtinen both earning all-ACC accolades, it marked the first time since 2014 two Yellow Jackets garnered all-ACC honors in the same season. Cubaj became the first Jacket since 2016 to earn first-team recognition, and just the seventh player in Tech history to earn a spot on the all-Defensive Team (first since 2014).

#BIGTIME

Head coach Nell Fortner picked up some special hardware, being named the 2021 ACC Coach of the Year by the Blue Ribbon Panel. With that accolade, Fortner has now earned coach of the year honors in the Atlantic Coast Conference, Big Ten Conference (1997 at Purdue) and Southeastern Conference (2009 at Auburn).

While also at Purdue, Fortner was named the 1997 *Basketball Times* National Coach of the Year. In 2000 while with USA Basketball, she earned USA Basketball Coach of the Year.

DOMINATING THE ACC

With Tech's win against Pitt (2/28), Georgia Tech recorded its 12th Atlantic Coast Conference win of the 2020-21 season, thereby tying the program record for most ACC wins in a season. The Yellow Jackets went 12-4 in 2011-12 for the best ACC season to date.

HELPING ON THE INSIDE

Senior Lorela Cubaj was a dominating presence for the Jackets defensively. She also was great at lending a hand to her teammates as the Terni, Italy, native averaged 2.9 assists per game to rank second on the team, having dished out 73 assists last season.

Heading into NCAA Tournament action, in the ACC, Cubaj led the league in assists per game among true post players and was only one of three posts players averaging 2.0-plus assists per game.

FORWARD/CENTER - ACC Assist Research

| | |
|---|-----------------|
| 1. Lorela Cubaj - 6-4, Sr., F - Georgia Tech | 2.95 apg |
| 2. Kayla Jones - 6-1, Sr., F - NC State | 2.67 apg |
| 3. Maddy Westbeld - 6-3, Fr., F - Notre Dame | 2.45 apg |

A YEAR'S DIFFERENCE

Lotta-Maj Lahtinen saw drastic improvement in her consistency last season. As a sophomore in 2019-20, she started 30 games for Tech and averaged 9.1 points. In Tech's 26 games in 2020-21, Lahtinen started all 26 games and was the team's leading scorer, averaging 15.0 points per game - a 5.9 ppg increase from the previous season. A gritty player on the floor, Lahtinen also led the Jackets in steals (50) and assists (90).

Lahtinen recorded 18 games scoring in double-figures last season after recording a total of 14 in 2019-20. Additionally, she posted 14 games of scoring 15-plus points, including six 20-plus point outings, as a junior, compared to five. Lahtinen went on a scoring tear in 2020-21, posting nine straight double-figure outings from Dec. 9 - Feb. 28.

ACC WEEKLY HONORS

2020-21 ACC Player and Freshman of the Week

Week 1 - Nov. 30

Player: Taylor Soule, Jr., F, Boston College
 Freshman: Hailey Van Lith, G, Louisville

Week 2- Dec. 7

Player: Kayla Jones, Sr., F, NC State
 Freshman: Maddy Westbeld, F, Notre Dame

Week 3- Dec. 14

Player: **Lotta-Maj Lahtinen, Jr., G, Georgia Tech**
 Freshman: **Loyal McQueen, G, Georgia Tech**

Week 4 - Dec. 21

Player: Janelle Bailey, Sr., C, North Carolina
 Freshman: Gabby Elliott, G, Clemson

Week 5- Jan. 4

Player: Jada Boyd, So., F, NC State
 Freshman: Maddy Westbeld, F, Notre Dame

Week 6- Jan. 11

Player: Ivana Raca, Sr., F, Wake Forest
 Freshman: Hailey Van Lith, G, Louisville

Week 7- Jan. 18

Co-Player: Elizabeth Kitley, So., C, Virginia Tech
 Co-Player: Gina Conti, Sr., G, Wake Forest
 Freshman: Priscilla Williams, G, Syracuse

Week 8 - Jan. 24

Player: Dana Evans, Sr., G, Louisville
 Freshman: Kamilla Cardoso, C, Syracuse

Week 9 - Feb. 1

Player: Aisha Sheppard, Sr., G, Virginia Tech
 Freshman: Kamilla Cardoso, C, Syracuse

Week 10 - Feb. 8

Player: Dana Evans, Sr., G, Louisville
 Freshman: Kamilla Cardoso, C, Syracuse

Week 11 - Feb. 15

Player: Gina Conti, Sr., G, Wake Forest
 Freshman: Georgia Ammore, G, Virginia Tech

Week 12- Feb. 22

Player: Jakia Brown-Turner, So., W, NC State
 Freshman: Deja Kelly, G, North Carolina

Week 13 - March 1

Player: Destiny Harde, Jr., F, Miami
 Freshman: Deja Kelly, G, North Carolina

She also saw significant improvement in her three-point performance, shooting 34.3 percent (47-137) compared to 28.7 percent in 2019-20.

For her improved performance, Lahtinen was tabbed the 2021 ACC Most Improved Player by the league's head coaches. In just the third year of the award, Lahtinen became the first Yellow Jacket to receive the honor.

#NELLYEAH

In just two years as head coach of the Yellow Jackets, head coach Nell Fortner guided Tech to a pair of double-digit ACC win seasons - marking the first time in program history the Jackets have posted back-to-back double-digit win ACC campaigns. In 2019-20, the Jackets finished 10-8 in the conference, earning a seventh-place finish in the league. In year two (2020-21), Tech hit the 10-win ACC mark for just the third time in program history, defeating Miami on Feb. 16.

Tech recorded its most ACC wins in a season back in 2011-12, going 12-4 in the league. That season, Tech finished 26-9 overall and reached the NCAA Sweet 16.

In 2020-21, Tech finished third in the ACC standings, behind Louisville (1st) and NC State (2nd) - marking the highest outright finish in program history. Tech's highest ranked finish in the league also took place in 2011-12, when the Jackets finished tied for third with a 12-4 league record.

IN THE RECORD BOOK

With her nine rebounds against Syracuse (2/2), senior Lorela Cubaj broke into the program's top-10 leaderboard in career rebounds. To date, Cubaj owns 909 career rebounds to rank fourth all-time in program history. Bonnie Tate holds the record with 1,039 career rebounds from 1977-79.

Additionally, Cubaj entered the season sitting seventh all-time in career blocks in the record book. Owing 34 blocks this season, Cubaj is now fifth all-time in career blocks with 128.

HITTING A MILESTONE

Kierra Fletcher hit the 1,000-career point mark on Feb. 28 against Pitt on her Senior Day. The Warren, Mich., native became the 32nd member of the Georgia Tech women's basketball 1,000-career point club.

GEORGIA TECH WOMEN'S BASKETBALL'S CAREER SCORING LEADERS

| Name | Points | Years | Name | Points | Years |
|---------------------|--------|---------|----------------------|--------|---------|
| 1. Tyaunna Marshall | 2,129 | 2010-14 | 6. Francesca Pan | 1,638 | 2017-20 |
| 2. Kisha Ford | 1,955 | 1994-97 | 7. Chioma Nnamaka | 1,593 | 2005-08 |
| 3. Karen Lounsbury | 1,743 | 1989-92 | 8. Aaliyah Whiteside | 1,580 | 2012-16 |
| 4. Dolores Bootz | 1,723 | 1985-88 | 9. Alex Montgomery | 1,565 | 2008-11 |
| 5. Carla Munnion | 1,671 | 1995-98 | 10. Joyce Pierce | 1,557 | 1991-93 |



RECORD WHEN...

| | |
|--|-----|
| At home | 0-0 |
| On road..... | 0-0 |
| Neutral | 0-0 |
| Against ranked teams | 0-0 |
| In games decided by 3 pts or less..... | 0-0 |
| In games decided by 4-5 pts | 0-0 |
| In games decided by 6-10 pts | 0-0 |
| In games decided by 11-20 pts | 0-0 |
| In games decided by 21+ pts | 0-0 |
| Leading at half..... | 0-0 |
| Tied at half | 0-0 |
| Trailing at half..... | 0-0 |
| Leading with 10:00 remaining | 0-0 |
| Trailing with 10:00 remaining | 0-0 |
| Leading with 5:00 remaining | 0-0 |
| Trailing with 5:00 remaining | 0-0 |
| GT shoots 40% or better | 0-0 |
| GT shoots less than 40%..... | 0-0 |
| GT shoots same/better than opp..... | 0-0 |
| Opp. shoots 40% or better..... | 0-0 |
| Opp. shoots less than 40%..... | 0-0 |
| GT out-rebounds opp | 0-0 |
| Opp. out-rebounds GT | 0-0 |
| Teams tied in rebounding | 0-0 |
| GT shoots 70% or better on FT's..... | 0-0 |
| GT has more/same FT attempts | 0-0 |
| Opp. has more FT attempts | 0-0 |
| GT shoots 30% or better on 3pt..... | 0-0 |
| GT shoots less than 30% on 3pt..... | 0-0 |
| Opp. shoots 30% or better on 3pt..... | 0-0 |
| Opp. shoots less than 30% on 3pt..... | 0-0 |
| GT has more/same TO than opp..... | 0-0 |
| GT scores 90+ pts | 0-0 |
| GT scores 80-89 pts | 0-0 |
| GT scores 70-79 pts | 0-0 |
| GT scores 60-69 pts | 0-0 |
| GT scores 50-59 pts | 0-0 |
| GT scores less than 50 pts | 0-0 |
| Opp. scores 90+ pts | 0-0 |
| Opp. scores 80-89 pts | 0-0 |
| Opp. scores 70-79 pts | 0-0 |
| Opp. scores 60-69 pts | 0-0 |
| Opp. scores 50-59 pts | 0-0 |
| Opp. scores less than 50 pts | 0-0 |
| On Mondays | 0-0 |
| On Tuesdays | 0-0 |
| On Wednesdays | 0-0 |
| On Thursdays | 0-0 |
| On Fridays | 0-0 |
| On Saturdays | 0-0 |
| On Sundays | 0-0 |
| In November | 0-0 |
| In December | 0-0 |
| In January | 0-0 |
| In February | 0-0 |
| In March..... | 0-0 |
| In Overtime..... | 0-0 |
| In Gold Uniforms | 0-0 |
| In Navy Uniforms..... | 0-0 |
| In White Uniforms..... | 0-0 |

THE LAST TIME...

The Last Time (Team)

| | |
|--|--|
| Tech scored 100 points in a game: | 102 vs. Southeastern Louisiana, November 18, 2015 |
| Tech scored 100 points in an ACC game: | 101 at Virginia, March 2, 2008 (2 OT) |
| A Tech opponent scored 100 points: | 103 at Virginia, March 2, 2008 (2 OT) |
| Tech scored 60-69 points in a half: | 60 vs. Morgan State, Nov. 16, 2014 |
| Tech scored 70+ points in a half: | 70 vs. Presbyterian (2nd half), Dec. 2, 1985 |
| Tech won an overtime game: | vs. Stephen F. Austin (54-52), March 21, 2021 |
| Tech lost an overtime game: | vs. Georgia (75-69), Nov. 29, 2020 |
| Tech played a double overtime game: | at Houston (95-89), Nov. 9, 2018 |
| Tech played a triple overtime game: | vs. Michigan (89-79), April 1, 2017 |
| Tech shot 70 percent for a half: | 76.9 (20-26) at Houston, Nov. 9, 2018 |
| Tech shot 80 percent for a half: | Never |
| Tech shot 60 percent from the field in a game: | 63.5 (40-63) vs. Kennesaw State, Nov. 22, 2011 |
| Tech shot 90 percent from the free throw line in a game (min. 10 att.): | 90.0 (9-10), Miami, Feb. 16, 2021 |
| Tech shot 100 percent from the free throw line in a game (min. 10 att.): | 1.000 (14-14), Virginia, Jan. 25, 2015 |
| Tech shot less than 40 percent from the field in a game: | 33.9 (21-62) vs. Stephen F. Austin, March 21, 2021 |
| Tech shot less than 30 percent from the field in a half: | 24.1 (7-29) vs. Stephen F. Austin, March 21, 2021 |
| Tech shot less than 50 percent from the free throw line in a game: | 33.3 (2-6) vs. Wake Forest, Feb. 7, 2020 |
| Opponent shot less than 50 percent from the free throw line in a game: | 44.4 (4-9) at Florida State, Feb. 18, 2021 |
| Tech did not make a 3-point field goal: | vs. Virginia, Jan. 28, 2018 |
| Tech held an opponent under 30 percent shooting: | 28.6 (18-63) vs. Stephen F. Austin, March 21, 2021 |
| An opponent shot 60 percent: | 62.3 (33-53) vs. Notre Dame, Jan. 7, 2018 |
| Tech attempted 50 free throws: | 51 (made 34) vs. Alabama State, Nov. 24, 2015 |
| Tech made 40 free throws: | Never |
| Tech defeated a top-10 opponent: | No. 4/4 at NC State, 65-61, Feb. 16, 2020 |
| Tech defeated a top-25 opponent: | No. 17 vs. West Virginia, 73-56, March 23, 2021 |
| Tech defeated a top-25 opponent on the road: | No. 17 vs. West Virginia, 73-56, March 23, 2021 |

The Last Time (Player)

| | |
|--|---|
| A player scored 40+ points: | Niesha Butler (40) vs. Florida State, Jan. 2, 1999 |
| A player scored 35-39 points: | Elizabeth Balogun (35) at North Carolina, Jan. 31, 2019 |
| A player scored 30-34 points: | Lotta-Maj Lahtinen (30) vs. NC State, Dec. 31, 2020 |
| Two players scored 20+/same game: | Lotta-Maj Lahtinen (22) & Lorela Cubaj (21) vs. West Virginia, March 23, 2021 |
| Three players scored 20+/same game: | Alex Montgomery (26), Janie Mitchell (20) and Iasia Hemingway (20) vs. Maryland, Jan. 20, 2008 |
| Four players scored 20+/same game: | Never |
| A player had back-to-back 30+ point games: | Carla Munnion (34) vs. Manhattan, Jan. 23, 1995, and (35) vs. Chattanooga, Dec. 13, 1995 |
| A player had 20+ rebounds: | Lorela Cubaj (20) at Clemson, Jan. 7, 2021 |
| A player had 15-19 rebounds: | Lorela Cubaj (18) vs. Clemson, March 5, 2021 |
| Two players had a double-double | E. Dixon (22 pts, 17 rebs) and L. Cubaj (13 pts, 11 rebs) vs. Duke, Jan. 10, 2019 |
| Two players had double-figure rebounds in the same game: | Cubaj (15 rebs) and Hermosa (10 rebs) at Boston College, Feb. 21, 2021 |
| Three players had double-figure rebounds in the same game: | Roddreka Rogers (12), Katarina Vuckovic (12) and Zaire O'Neil (11), NC State, Feb. 12, 2015 |
| One player had a double-double (Pts and Ast): | Aaliyah Whiteside (14 pts, 11 asts) vs. Prairie View A&M, Dec. 15, 2015 |
| One player had a double-double (Pts and Steals): | Dawnn Maye (23 pts, 10 steals) vs. Marquette, Nov. 18, 2012 |
| A player had a double-double in consecutive games: | Lorela Cubaj - vs. Stephen F. Austin, March 21, 2021 (14 pts, 10 rebs) vs. West Virginia, March 23, 2021 (21 pts, 12 rebs) |
| A player had a triple-double (Pts, Reb, Asst): | Milli Martinez (12 pts, 10 reb, 10 asst) vs. Morris Brown, Feb. 23, 2002 |
| A player had 20 points and 20 rebounds in the same game: | Kisha Ford (21 pts, 21 reb) vs. Mercer, Nov. 25, 1996 |
| A player had 10-14 assists in a game: | Lotta-Maj Lahtinen (10) vs. Miami, Feb. 16, 2021 |
| A player had 15+ assists in a game: | Nina Bärlin (17) vs. Virginia, Jan. 10, 2002 |
| A player had 10+ assists in three consecutive games: | Nina Bärlin (11) vs. E. Washington, Nov. 24, 2001, (14) vs. Arkansas St., Dec. 1, 2001, (11) vs. Southern, Dec. 2, 2001, (13) vs. Florida State, Dec. 5, 2001 |
| A player topped the team in scoring, rebounds, and assists for a game: | Lorela Cubaj, 14 pts, 10 reb, 4 ast vs. SFA, March 21, 2021 |
| A player played every minute of a game: | Lotta-Maj Lathinen vs. South Carolina, March 28, 2021 |
| A player had five blocked shots in a game: | Lorela Cubaj (5) at Clemson, Jan. 7, 2021 |
| A player had five blocked shots in back-to-back games: | Zaire O'Neil (5) vs. Syracuse, Feb. 8, 2015 (6) vs. NC State, Feb. 12, 2015 |
| A player had 10+ steals in a game: | Dawnn Maye (10) vs. Marquette, Nov. 18, 2012 |

POSTSEASON RESULTS

NCAA TOURNAMENT

The Yellow Jackets made their first appearance in the NCAA Tournament in 1992-93 with a 16-10 record and an 8-8 ACC mark. Tech didn't return to the NCAA Tournament for 10 years, making its next trip in 2003, but then the Jackets participated in every Big Dance from 2007 - 2012. In 2012, Georgia Tech made its breakthrough to reach the program's first Sweet 16 with a 76-64 win against Georgetown in the second round.

1993: Midwest Region

Evanston, Ill.
M17 64 at Northwestern L, 62-90

2003: East Region

West Lafayette, Ind.
#10 seed
M22 64 vs. #7 Virginia Tech L, 59-61

2007: Dallas Region

Minneapolis, Minn.
#7 Seed
M17 64 vs. #10 DePaul W, 55-54
M19 32 vs. #2 Purdue L, 63-76

2008: Greensboro Region

Des Moines, Iowa
#10 seed
M22 64 vs. #7 Iowa State L, 55-58

2009: Oklahoma City Region

Iowa City, Iowa
#9 seed
M22 64 vs. #8 Iowa W, 76-62
M24 32 vs. #1 Oklahoma L, 50-69

2010: Kansas City Region

Norman, Oklahoma
#6 seed
M21 64 vs. #11 Arkansas Little Rock L, 53-63

2011: Dayton Region

Columbus, Ohio
#5 seed
M19 64 vs. #12 Bowling Green W, 69-58
M21 32 at #4 Ohio State L, 60-67

2012: Des Moines Region

Chapel Hill, N.C.
#4 seed
M18 64 vs. #13 Sacred Heart W, 76-50
M20 32 vs. #5 Georgetown W, 76-64
Des Moines, Iowa
M24 16 vs. #1 Baylor L, 68-83

2014: Louisville Region

Baton Rouge, La.
#10 seed
M23 64 at #7 LSU L, 78-98

2021: Hemisfair Region

San Antonio, Texas
#5 seed
M21 64 vs. #12 Stephen F. Austin W, 54-52
M23 32 vs. #4 West Virginia W, 73-56
M38 16 vs. #1 South Carolina L, 65-76

Georgia Tech All-Time NCAA Record

Overall: 7-10
Round of 64: 5-5
Round of 32: 2-3
Sweet 16: 0-2
Neutral Site: 5-7
Opponent Site: 1-3

Georgia Tech vs. Conferences in NCAA Tournament

Big 12: 1-3
BIG EAST: 2-1
Big Ten: 1-3
Mid-American: 1-0
Northeast: 1-0
SEC: 0-2
Southland: 1-0
Sun Belt: 0-1



The Yellow Jackets made it to the NCAA Tournament in 2007 which was the first of six-straight appearances in the Big Dance from 2007-12.

WNIT

In the first postseason appearance in school history, Georgia Tech's women's basketball team captured the 1992 National Women's Invitational Tournament in Amarillo, Texas. En route to the title, the Jackets defeated Wisconsin-Green Bay, 78-77, in the first round, Nebraska, 73-68, in the semifinals, and Hawaii, 90-72, in the championship game. The 1992 WNIT not only marked Tech's first postseason appearance, but it also marked the first WNIT title for an ACC school. In 1998, the WNIT switched names to the WNIT.

1992: Cal Farley Coliseum; Amarillo, Texas (WNIT)

M26 Wisconsin-Green Bay W 78-77
M27 Nebraska W 73-68
M28 Hawaii W 90-72

2000: Multiple Sites (WNIT)

M16 Southern Mississippi(1) W 76-71 (ot)
M18 at Chattanooga(2) W 81-74
M21 at Arkansas(3) L 67-78

2001: Humphrey Coliseum; Starkville, Miss.(WNIT)

M15 Mississippi State L 73-77

2002: Alexander Memorial Coliseum; Atlanta, Ga.(WNIT)

M13 Miami L 64-73

2015: Multiple Sites (WNIT)

M19 Elon W 69-47
M22 at Ole Miss (5) L 48-63

2016: McCamish Pavilion, Atlanta, Ga. (WNIT)

M17 Mercer W 73-56
M21 Tulane L 61-64

2017: Multiple Sites (WNIT)

M16 Jacksonville (4) W 71-55
M19 UCF (4) W 63-51
M23 MTSU (4) W 70-57
M26 Alabama (4) W 76-66
M29 Washington State (4) W 69-61
A1 at Michigan (6) L 79-89 (ot3)

2018: Multiple Sites (WNIT)

M15 Bethune Cookman (4) W 85-32
M18 UAB (4) W 91-47
M22 at Alabama (7) L 59-61

- (1): Alexander Memorial Coliseum, Atlanta, Ga.
(2): McKenzie Arena, Chattanooga, Tenn.
(3): Arkansas Arena, Fayetteville, Ark.
(4): McCamish Pavilion, Atlanta, Ga.
(5): Tad Smith Coliseum, Oxford, Miss.
(6): Calihan Hall, Detroit, Mich.
(7): Coleman Coliseum, Tuscaloosa, Ala.

Eight Tournaments: Won 14 Lost 7
1992 NWIT Champions

OTHER POSTSEASON TOURN.

1975 GAIAW State Tournament

vs. Fort Valley L 39-76
vs. Tift L 54-65

1976 GAIAW State Tournament

vs. Berry L 41-109
vs. North Georgia L 35-69

1977 GAIAW State Tournament

vs. Morris Brown W 75-27
vs. Spelman W 55-43

1978 GAIAW State Tournament

vs. West Georgia L 79-94

1979 GAIAW State Tournament

vs. Berry L 68-92

1980 GAIAW State Tournament

F. 21 at Georgia Southern L 51-87

1981 GAIAW State Tournament

F. 26 vs. Georgia L 70-89

Seven Tournaments: Won 2 Lost 8

STARTING LINEUPS

| Game | C/F | F/G | G/F | G | G |
|------|-----------------------|---------|-------|------------------|----------------|
| N25 | Georgia State | Hermosa | Cubaj | McQueen | Bates Lahtinen |
| N29 | Georgia | Hermosa | Cubaj | McQueen | Bates Lahtinen |
| D3 | Tulane | Hermosa | Cubaj | McQueen | Bates Lahtinen |
| D9 | Boston College | Aranaz | Cubaj | McQueen | Bates Lahtinen |
| D13 | at Notre Dame | Aranaz | Cubaj | McQueen | Bates Lahtinen |
| D31 | NC State | Aranaz | Cubaj | Love | Bates Lahtinen |
| J3 | at Notre Dame | Cubaj | Love | McQueen | Bates Lahtinen |
| J7 | at Clemson | Aranaz | Cubaj | Fletcher | Bates Lahtinen |
| J10 | Virginia Tech | Hermosa | Cubaj | Fletcher | Bates Lahtinen |
| J21 | at Wake Forest | Hermosa | Cubaj | Fletcher | Bates Lahtinen |
| J24 | Florida State | Hermosa | Cubaj | Fletcher | Bates Lahtinen |
| J28 | at Miami | Hermosa | Cubaj | Fletcher McQueen | Lahtinen |
| F2 | Syracuse | Hermosa | Cubaj | Fletcher McQueen | Lahtinen |
| F4 | Clemson | Hermosa | Cubaj | Fletcher McQueen | Lahtinen |
| F7 | Wake Forest | Hermosa | Cubaj | Fletcher McQueen | Lahtinen |
| F11 | at Louisville | Hermosa | Cubaj | Fletcher McQueen | Lahtinen |
| F16 | Miami | Hermosa | Cubaj | Fletcher McQueen | Lahtinen |
| F18 | at Florida State | Hermosa | Cubaj | Fletcher McQueen | Lahtinen |
| F21 | at Boston College | Hermosa | Cubaj | Fletcher McQueen | Lahtinen |
| F25 | at North Carolina | Hermosa | Cubaj | Fletcher McQueen | Lahtinen |
| F28 | Pitt | Hermosa | Cubaj | Fletcher McQueen | Lahtinen |
| M5 | vs. Clemson | Hermosa | Cubaj | Fletcher McQueen | Lahtinen |
| M6 | vs. NC State | Hermosa | Cubaj | Fletcher McQueen | Lahtinen |
| M21 | vs. Stephen F. Austin | Hermosa | Cubaj | Fletcher McQueen | Lahtinen |
| M23 | vs. West Virginia | Hermosa | Cubaj | Fletcher McQueen | Lahtinen |
| M28 | vs. South Carolina | Hermosa | Cubaj | Fletcher McQueen | Lahtinen |

SPECIALTY STATS (GT/Opp)

| Game | Paint | Off TO | 2ndCh | FBreak | Bench |
|------|-----------------------|--------|-------|--------|-------------|
| N25 | Georgia State | 32/14 | 14/11 | 13/3 | 5/9 10/17 |
| N29 | Georgia | 40/38 | 21/16 | 8/4 | 6/16 12/27 |
| D3 | Tulane | 28/40 | 14/7 | 14/18 | 3/4 12/9 |
| D9 | Boston College | 32/30 | 18/17 | 9/11 | 13/13 19/6 |
| D13 | at Notre Dame | 32/26 | 21/11 | 6/10 | 6/3 19/20 |
| D31 | NC State | 34/40 | 4/11 | 17/14 | 8/4 27/32 |
| J3 | at Notre Dame | 32/30 | 12/17 | 19/9 | 12/10 35/18 |
| J7 | at Clemson | 36/30 | 22/9 | 17/11 | 0/0 16/16 |
| J10 | Virginia Tech | 24/18 | 11/13 | 9/9 | 2/7 2/10 |
| J21 | at Wake Forest | 38/16 | 17/6 | 6/4 | 7/7 17/4 |
| J24 | Florida State | 20/28 | 7/19 | 15/6 | 12/2 14/11 |
| J28 | at Miami | 30/28 | 4/4 | 13/7 | 3/3 13/14 |
| F2 | Syracuse | 32/46 | 17/11 | 8/2 | 14/7 17/9 |
| F4 | Clemson | 40/24 | 17/18 | 6/5 | 8/7 8/6 |
| F7 | Wake Forest | 30/24 | 9/11 | 9/9 | 2/4 6/7 |
| F11 | at Louisville | 30/44 | 8/13 | 14/13 | 4/6 14/22 |
| F16 | Miami | 36/26 | 16/9 | 13/8 | 12/5 8/13 |
| F18 | at Florida State | 28/22 | 16/6 | 6/19 | 7/2 8/16 |
| F21 | at Boston College | 20/32 | 4/15 | 7/8 | 2/10 1/8 |
| F25 | at North Carolina | 24/34 | 17/18 | 6/9 | 6/11 7/13 |
| F28 | Pitt | 22/26 | 16/9 | 7/4 | 8/9 0/14 |
| M5 | vs. Clemson | 28/30 | 12/7 | 9/12 | 4/8 0/12 |
| M6 | vs. NC State | 36/32 | 8/7 | 5/9 | 8/3 7/8 |
| M21 | vs. Stephen F. Austin | 32/22 | 16/10 | 6/14 | 14/2 4/23 |
| M23 | vs. West Virginia | 32/24 | 15/15 | 16/5 | 12/5 9/10 |
| M28 | vs. South Carolina | 32/44 | 16/22 | 7/4 | 15/12 3/21 |

MISC. STATS

Most First Half Points

| | | | |
|--------------|----|--------------------------|----------|
| Georgia Tech | 51 | Boston College (12/9/20) | W, 86-68 |
| Opponents | 54 | NC State (12/31/20) | L, 75-84 |

Fewest First Half Points

| | | | |
|--------------|----|---------------------------------|----------|
| Georgia Tech | 17 | vs. Stephen F. Austin (3/21/21) | W, 54-52 |
| Opponents | 13 | Georgia State (11/25/20) | W, 62-38 |

Largest Halftime Lead

| | | | |
|--------------|----|--------------------------|----------|
| Georgia Tech | 21 | Boston College (12/9/20) | W, 86-68 |
| Opponents | 29 | NC State (12/31/20) | L, 75-84 |

Most Second Half Points

| | | | |
|--------------|----|-------------------------|----------|
| Georgia Tech | 50 | NC State (12/31/20) | L, 75-84 |
| Opponents | 49 | at Louisville (2/11/21) | L, 70-85 |

Fewest Second Half Points

| | | | |
|--------------|----|---------------------------------|----------|
| Georgia Tech | 23 | at Boston College (2/21/21) | L, 43-49 |
| Opponents | 14 | vs. Stephen F. Austin (3/21/21) | W, 54-52 |

Largest Margin of Victory

| | | | |
|--------------|----|-----------------------------|----------|
| Georgia Tech | 29 | at Wake Forest (1/21/21) | W, 73-44 |
| Opponents | 25 | at North Carolina (2/25/21) | L, 59-84 |

Career 20-Point Games

Lorela Cubaj: 5

| | | |
|---------------|----------|----|
| ETSU | 12/15/19 | 20 |
| Wake Forest | 2/9/20 | 21 |
| Georgia | 11/29/20 | 20 |
| Syracuse | 2/2/21 | 21 |
| West Virginia | 3/23/21 | 21 |

Lotta-Maj Lahtinen: 6

| | | |
|----------------|----------|----|
| Boston College | 12/9/20 | 27 |
| NC State | 12/31/20 | 30 |
| Wake Forest | 2/7/21 | 22 |
| Pittsburgh | 2/28/21 | 22 |
| West Virginia | 3/23/21 | 22 |
| South Carolina | 3/28/21 | 20 |

Kierra Fletcher: 4

| | | |
|------------|---------|----|
| Houston | 11/9/18 | 25 |
| Syracuse | 1/20/19 | 22 |
| Pittsburgh | 2/28/21 | 21 |
| Clemson | 3/5/21 | 21 |

POINTS-REBOUNDS-ASSISTS

| Opponent | Date | Score | W/L | 00 MCQUEEN | 03 BATES | 04 BOYD | 11 ARANAZ | 13 CUBAJ | 14 CLARK | 15 CARTER | 20 HERMOSA | 24 LOVE |
|--------------------|----------|-------|-----|---------------|-------------|------------|--------------|-------------|-------------|--------------|---------------|------------|
| GEORGIA STATE | 11/25/20 | 62-38 | W | 12-3-1 | 12-1-0 | DNP | 2-5-2 | 8-14-4 | 0-0-0 | 4-4-2 | 6-5-2 | 4-8-0 |
| GEORGIA | 11/29/20 | 69-75 | LOT | 12-0-3 | 9-6-2 | DNP | 5-5-2 | 20-13-2 | DNP | DNP | 10-5-0 | 7-4-0 |
| TULANE | 12/03/20 | 55-51 | W | 10-4-4 | 4-2-0 | 0-1-0 | 2-4-1 | 18-16-1 | DNP | DNP | 4-3-0 | 10-4-0 |
| BOSTON COLLEGE | 12/09/20 | 86-68 | W | 13-4-5 | 9-5-1 | DNP | 2-2-2 | 16-7-2 | DNP | 7-0-0 | 2-1-0 | 10-5-0 |
| at Notre Dame | 12/13/20 | 82-67 | W | 11-1-0 | 12-0-4 | DNP | 5-1-2 | 16-13-3 | DNP | 2-0-0 | 6-2-0 | 11-8-0 |
| NC STATE | 12/31/20 | 75-84 | L | DNP | 3-2-1 | DNP | 0-0-2 | 15-3-2 | DNP | 7-4-0 | 10-6-1 | 0-3-0 |
| at Notre Dame | 01/03/21 | 67-69 | L | 9-0-3 | 3-2-1 | DNP | 4-4-1 | 6-8-3 | DNP | DNP | 12-8-1 | 3-0-0 |
| at Clemson | 01/07/21 | 67-55 | W | 1-0-0 | 9-0-2 | 0-0-0 | 0-0-1 | 14-20-2 | DNP | DNP | 3-5-2 | 12-3-1 |
| VIRGINIA TECH | 01/10/21 | 56-54 | W | 2-2-0 | 6-0-1 | 0-1-2 | DNP | 10-13-2 | DNP | 0-0-0 | 7-8-0 | 0-3-0 |
| at Wake Forest | 01/21/21 | 73-44 | W | 9-1-1 | 6-1-1 | 2-1-0 | DNP | 11-15-5 | 3-0-0 | 1-2-0 | 16-3-2 | 2-0-0 |
| FLORIDA STATE | 01/24/21 | 66-58 | W | 12-2-3 | 3-2-0 | DNP | DNP | 5-9-6 | DNP | DNP | 9-8-0 | 2-4-0 |
| at Miami (FL) | 01/28/21 | 70-56 | W | 8-4-2 | DNP | 5-2-0 | DNP | 14-14-2 | DNP | 0-0-0 | 10-6-1 | 8-4-0 |
| SYRACUSE | 02/02/21 | 76-63 | W | 5-0-3 | DNP | 3-2-0 | DNP | 21-9-2 | DNP | DNP | 9-5-0 | 14-5-1 |
| CLEMSON | 02/04/21 | 71-69 | W | 17-1-7 | DNP | 5-2-2 | DNP | 12-12-5 | DNP | 2-0-0 | 9-4-1 | 1-0-0 |
| WAKE FOREST | 02/07/21 | 52-61 | L | 3-0-2 | DNP | 0-0-0 | DNP | 11-14-4 | DNP | 2-0-0 | 4-2-1 | 4-3-2 |
| at Louisville | 02/11/21 | 70-85 | L | 14-0-6 | DNP | 8-5-2 | DNP | 4-4-0 | DNP | 0-2-0 | 13-6-1 | 6-3-1 |
| MIAMI (FL) | 02/16/21 | 67-56 | W | 6-1-0 | DNP | 0-0-0 | DNP | 14-7-3 | DNP | 2-1-0 | 15-7-0 | 6-9-1 |
| at Florida St. | 02/18/21 | 62-48 | W | 9-0-3 | DNP | 4-0-0 | DNP | 14-10-3 | DNP | 0-1-0 | 14-8-3 | 4-2-0 |
| at Boston College | 02/21/21 | 43-49 | L | 7-3-1 | DNP | 0-1-1 | DNP | 7-15-4 | DNP | 0-0-0 | 14-10-1 | 1-2-1 |
| at North Carolina | 02/25/21 | 59-84 | L | 13-2-4 | DNP | 3-3-0 | DNP | 8-9-4 | DNP | 2-2-0 | 8-3-0 | 2-3-0 |
| PITT | 02/28/21 | 65-60 | W | 8-0-2 | DNP | 0-1-1 | DNP | 2-17-3 | DNP | DNP | 12-3-1 | 0-2-1 |
| vs Clemson | 03/05/21 | 60-57 | W | 14-0-0 | DNP | 0-0-0 | DNP | 12-18-4 | DNP | DNP | 4-5-1 | 0-0-0 |
| vs NC State | 03/06/21 | 61-66 | L | 6-1-0 | DNP | 2-2-0 | DNP | 17-11-2 | DNP | DNP | 4-2-0 | 5-1-0 |
| vs. SFA | 03/21/21 | 54-52 | W | 5-3-1 | DNP | 4-2-0 | DNP | 14-10-4 | DNP | DNP | 6-6-1 | 0-4-1 |
| vs. West Virginia | 03/23/21 | 73-56 | W | 5-1-1 | DNP | 3-3-2 | DNP | 21-12-1 | 0-0-0 | 0-0-0 | 2-3-1 | 6-2-0 |
| vs. South Carolina | 03/28/21 | 65-76 | L | 9-1-2 | DNP | 3-1-0 | DNP | 15-7-1 | DNP | DNP | 2-5-1 | 0-0-0 |

| Opponent | Date | Score | W/L | 31 LAHTINEN | 41 FLETCHER |
|--------------------|----------|-------|-----|----------------|----------------|
| GEORGIA STATE | 11/25/20 | 62-38 | W | 14-10-3 | DNP |
| GEORGIA | 11/29/20 | 69-75 | LOT | 6-5-4 | DNP |
| TULANE | 12/03/20 | 55-51 | W | 7-5-3 | DNP |
| BOSTON COLLEGE | 12/09/20 | 86-68 | W | 27-7-5 | DNP |
| at Notre Dame | 12/13/20 | 82-67 | W | 19-3-8 | DNP |
| NC STATE | 12/31/20 | 75-84 | L | 30-11-1 | 10-3-2 |
| at Notre Dame | 01/03/21 | 67-69 | L | 11-7-4 | 19-7-4 |
| at Clemson | 01/07/21 | 67-55 | W | 15-4-3 | 13-3-3 |
| VIRGINIA TECH | 01/10/21 | 56-54 | W | 17-5-2 | 14-5-4 |
| at Wake Forest | 01/21/21 | 73-44 | W | 17-6-4 | 6-6-1 |
| FLORIDA STATE | 01/24/21 | 66-58 | W | 17-8-2 | 18-7-4 |
| at Miami (FL) | 01/28/21 | 70-56 | W | 13-4-4 | 12-5-8 |
| SYRACUSE | 02/02/21 | 76-63 | W | 6-1-2 | 18-8-5 |
| CLEMSON | 02/04/21 | 71-69 | W | 17-1-5 | 8-6-3 |
| WAKE FOREST | 02/07/21 | 52-61 | L | 22-5-1 | 6-2-5 |
| at Louisville | 02/11/21 | 70-85 | L | 6-1-5 | 19-8-3 |
| MIAMI (FL) | 02/16/21 | 67-56 | W | 9-7-10 | 15-5-3 |
| at Florida St. | 02/18/21 | 62-48 | W | 6-1-4 | 11-5-5 |
| at Boston College | 02/21/21 | 43-49 | L | 9-3-0 | 5-4-1 |
| at North Carolina | 02/25/21 | 59-84 | L | 17-0-2 | 6-4-2 |
| PITT | 02/28/21 | 65-60 | W | 22-5-1 | 21-3-6 |
| vs Clemson | 03/05/21 | 60-57 | W | 9-2-3 | 21-6-5 |
| vs NC State | 03/06/21 | 61-66 | L | 17-4-5 | 10-7-4 |
| vs. SFA | 03/21/21 | 54-52 | W | 14-6-2 | 11-9-3 |
| vs. West Virginia | 03/23/21 | 73-56 | W | 22-4-2 | 14-6-4 |
| vs. South Carolina | 03/28/21 | 65-76 | L | 20-4-5 | 16-7-3 |

2020-21 RESULTS

RECORD: 17-9 Overall (Home: 9-3; Away: 5-4; Neutral: 3-2; ACC: 12-6)

| Date | Opponent | Dec. | Result | Margin | Rec. | High Scorer | High Rebounder | High Assists | Attendance |
|------|--------------------|------|------------|--------|------|----------------------|-------------------|----------------------|------------|
| N25 | Georgia State | W | 62-38 | +24 | 1-0 | 14-Lahtinen | 14-Cubaj | 4-Cubaj | 1200 |
| N29 | Georgia | L | 69-75 (ot) | -6 | 1-1 | 20-Cubaj | 13-Cubaj | 4-Lahtinen | 1200 |
| D3 | Tulane | W | 55-51 | +4 | 2-1 | 18-Cubaj | 16-Cubaj | 4-McQueen | 1200 |
| D9 | Boston College | W | 86-68 | +18 | 3-1 | 27-Lahtinen | 7-Lahtinen, Cubaj | 5-McQueen, Lathinen | 1200 |
| D13 | at Notre Dame | W | 82-67 | +15 | 4-1 | 19-Lahtinen | 13-Cubaj | 8-Lahtinen | 93 |
| D31 | NC State | L | 75-84 | -9 | 4-2 | 30-Lahtinen | 11-Lathinen | 2-Three players | 1200 |
| J3 | at Notre Dame | L | 67-69 | -2 | 4-3 | 19-Fletcher | 8-Cubaj, Hermosa | 4-Fletcher, Lathinen | 53 |
| J7 | at Clemson | W | 67-55 | +12 | 5-3 | 15-Lahtinen | 20-Cubaj | 3-Fletcher, Lathinen | 452 |
| J10 | Virginia Tech | W | 56-54 | +2 | 6-3 | 17-Lathinen | 13-Cubaj | 4-Fletcher | 1200 |
| J21 | at Wake Forest | W | 73-44 | +29 | 7-3 | 17-Lathinen | 15-Cubaj | 5-Cubaj | 0 |
| J24 | Florida St. | W | 66-58 | +8 | 8-3 | 18-Fletcher | 9-Cubaj | 6-Cubaj | 1200 |
| J28 | at Miami | W | 70-56 | +14 | 9-3 | 14-Cubaj | 14-Cubaj | 8-Fletcher | 0 |
| F2 | Syracuse | W | 76-63 | +13 | 10-3 | 21-Cubaj | 9-Cubaj | 5-Fletcher | 1200 |
| F4 | Clemson | W | 71-69 | +2 | 11-3 | 17-Lahtinen, McQueen | 12-Cubaj | 7-McQueen | 1200 |
| F7 | Wake Forest | L | 52-61 | -9 | 11-4 | 22-Lahtinen | 14-Cubaj | 5-Fletcher | 1200 |
| F11 | at Louisville | L | 70-85 | -15 | 11-5 | 19-Fletcher | 8-Fletcher | 6-McQueen | 2914 |
| F16 | Miami | W | 67-56 | +11 | 12-5 | 15-Hermosa, Fletcher | 9-Love | 10-Lahtinen | 1200 |
| F18 | at Florida State | W | 62-48 | +14 | 13-5 | 14-Hermosa, Cubaj | 10-Cubaj | 5-Fletcher | 1128 |
| F21 | at Boston College | L | 43-49 | -6 | 13-6 | 14-Hermosa | 15-Cubaj | 4-Cubaj | 0 |
| F25 | at North Carolina | L | 59-84 | -25 | 13-7 | 17-Lahtinen | 9-Cubaj | 4-Cubaj, McQueen | 0 |
| F28 | Pitt | W | 65-60 | +5 | 14-7 | 22-Lahtinen | 17-Cubaj | 6-Fletcher | 1200 |
| M5 | vs. Clemson | W | 60-57 | +3 | 15-7 | 21-Fletcher | 18-Cubaj | 5-Fletcher | 1259 |
| M6 | vs. NC State | L | 61-66 | -5 | 15-8 | 17-Cubaj, Lahtinen | 11-Cubaj | 5-Lahtinen | 1122 |
| M21 | vs. SFA | W | 54-52 | +2 | 16-8 | 14-Cubaj, Lahtinen | 10-Cubaj | 4-Cubaj | 0 |
| M23 | vs. West Virginia | W | 73-56 | +17 | 17-8 | 22-Lahtinen | 12-Cubaj | 4-Fletcher | 0 |
| M28 | vs. South Carolina | L | 65-76 | -11 | 17-9 | 20-Lahtinen | 7-Cubaj, Fletcher | 5-Lahtinen | 0 |

MISC. PLAYER STATS

Double-Figure Scoring Games

Lorela Cubaj - 19
Lotta-Maj Lahtinen - 18
Kierra Fletcher - 16
Nerea Hermosa - 10
Loyal McQueen - 10
Eylia Love - 5
Sarah Bates - 2

Double-Figure Rebounding Games

Lorela Cubaj - 17
Lotta-Maj Lahtinen - 2
Nerea Hermosa - 1

Games Leading Scorer

Lotta-Maj Lahtinen - 15
Lorela Cubaj - 7
Kierra Fletcher - 5
Nerea Hermosa - 3
Loyal McQueen - 1

Games Leading Rebounder

Lorela Cubaj - 23
Kierra Fletcher - 2
Lotta-Maj Lahtinen - 2
Nerea Hermosa - 1
Eylia Love - 1

Games Leading Assists

Kierra Fletcher - 11
Lotta-Maj Lahtinen - 8
Lorela Cubaj - 7
Loyal McQueen - 5
Aixa Wone Aranaz - 1

Double-Doubles

Lorela Cubaj - 14
Lotta-Maj Lahtinen - 2
Nerea Hermosa - 1

2020-21 GEORGIA TECH STATISTICS



2020-21 Georgia Tech Women's Basketball Combined Team Statistics All games

Page 1/1
as of Mar 28, 2021

Game Records

| Record | Overall | Home | Away | Neutral |
|----------------|---------|------|------|---------|
| ALL GAMES | 17-9 | 9-3 | 5-4 | 3-2 |
| CONFERENCE | 12-6 | 7-2 | 5-4 | 0-0 |
| NON-CONFERENCE | 5-3 | 2-1 | 0-0 | 3-2 |

Score by Periods

| Team | 1st | 2nd | 3rd | 4th | OT | TOT |
|--------------|-----|-----|-----|-----|----|------|
| Georgia Tech | 417 | 392 | 462 | 423 | 12 | 1706 |
| Opponents | 407 | 365 | 385 | 428 | 16 | 1601 |

Team Box Score

| No. | Player | Total | | | | | 3-Point | | F-Throw | | Rebounds | | | | Other | | | | PTS | AVG | | |
|------------------|---------------------|-----------|-------------|------|-----------------|-------------|----------------|-------------|----------------|-------------|------------|------------|------------|-------------|------------|----------|------------|------------|-----------|------------|-------------|-------------|
| | | GP-GS | MIN | AVG | FG-FGA | FG% | 3FG-FGA | 3FG% | FT-FTA | FT% | OFF | DEF | TOT | AVG | PF | DQ | A | TO | | | BLK | STL |
| 31 | LAHTINEN, Lotta-Maj | 26-26 | 949:43 | 36.5 | 147-342 | .430 | 47-137 | .343 | 48-66 | .727 | 33 | 86 | 119 | 4.6 | 59 | 2 | 90 | 82 | 6 | 50 | 389 | 15.0 |
| 41 | FLETCHER, Kierra | 21-19 | 739:08 | 35.2 | 99-238 | .416 | 23-64 | .359 | 52-69 | .754 | 35 | 81 | 116 | 5.5 | 40 | 0 | 78 | 35 | 11 | 17 | 273 | 13.0 |
| 13 | CUBAJ, Lorela | 26-26 | 866:21 | 33.3 | 137-312 | .439 | 6-31 | .194 | 45-76 | .592 | 70 | 230 | 300 | 11.5 | 70 | 1 | 74 | 59 | 34 | 34 | 325 | 12.5 |
| 00 | MCQUEEN, Loyal | 25-21 | 769:40 | 30.8 | 75-197 | .381 | 39-106 | .368 | 31-51 | .608 | 5 | 29 | 34 | 1.4 | 41 | 0 | 54 | 50 | 1 | 6 | 220 | 8.8 |
| 20 | HERMOSA, Nerea | 26-21 | 670:35 | 25.8 | 95-170 | .559 | 0-0 | .000 | 21-32 | .656 | 62 | 67 | 129 | 5.0 | 58 | 3 | 21 | 33 | 27 | 15 | 211 | 8.1 |
| 3 | BATES, Sarah | 11-11 | 325:02 | 29.5 | 25-73 | .342 | 24-69 | .348 | 2-2 | 1.000 | 0 | 21 | 21 | 1.9 | 12 | 0 | 13 | 3 | 1 | 4 | 76 | 6.9 |
| 24 | LOVE, Eylia | 26-2 | 496:42 | 19.1 | 43-100 | .430 | 4-14 | .286 | 28-38 | .737 | 26 | 56 | 82 | 3.2 | 55 | 0 | 9 | 28 | 1 | 17 | 118 | 4.5 |
| 11 | WONE ARANAZ, Aixa | 8-4 | 149:58 | 18.7 | 8-27 | .296 | 0-2 | .000 | 4-5 | .800 | 9 | 12 | 21 | 2.6 | 12 | 0 | 13 | 4 | 1 | 2 | 20 | 2.5 |
| 4 | BOYD, Anaya | 19-0 | 178:16 | 9.4 | 15-53 | .283 | 2-21 | .095 | 10-17 | .588 | 4 | 23 | 27 | 1.4 | 17 | 0 | 10 | 10 | 2 | 9 | 42 | 2.2 |
| 15 | CARTER, Avyonce | 15-0 | 100:57 | 6.7 | 9-33 | .273 | 2-20 | .100 | 9-13 | .692 | 5 | 11 | 16 | 1.1 | 11 | 0 | 2 | 9 | 0 | 4 | 29 | 1.9 |
| 14 | CLARK, Anisa | 3-0 | 03:38 | 1.2 | 1-1 | 1.000 | 1-1 | 1.000 | 0-0 | .000 | 0 | 0 | 0 | 0.0 | 1 | 0 | 0 | 0 | 0 | 0 | 3 | 1.0 |
| Team | | | | | | | | | | | 46 | 47 | 93 | | | | 12 | | | | | |
| Total | | 26 | 5250 | | 654-1546 | .423 | 148-465 | .318 | 250-369 | .678 | 295 | 663 | 958 | 36.8 | 376 | 6 | 364 | 325 | 84 | 158 | 1706 | 65.6 |
| Opponents | | 26 | 5250 | | 613-1506 | .407 | 133-396 | .336 | 242-342 | .708 | 260 | 623 | 883 | 34.0 | 421 | 8 | 303 | 344 | 78 | 144 | 1601 | 61.6 |

Team Statistics

| | GATECH | OPP |
|------------------------|-----------------|-----------------|
| Scoring | 1706 | 1601 |
| Points per game | 65.6 | 61.6 |
| Scoring margin | +4.0 | - |
| Field goals-att | 654-1546 | 613-1506 |
| Field goal pct | .423 | .407 |
| 3 point fg-att | 148-465 | 133-396 |
| 3-point FG pct | .318 | .336 |
| 3-pt FG made per game | 5.7 | 5.1 |
| Free throws-att | 250-369 | 242-342 |
| Free throw pct | .678 | .708 |
| F-Throws made per game | 9.6 | 9.3 |
| Rebounds | 958 | 883 |
| Rebounds per game | 36.8 | 34.0 |
| Rebounding margin | +2.9 | - |
| Assists | 364 | 303 |
| Assists per game | 14.0 | 11.7 |
| Turnovers | 325 | 344 |
| Turnovers per game | 12.5 | 13.2 |
| Turnover margin | +0.7 | - |
| Assist/turnover ratio | 1.1 | 0.9 |
| Steals | 158 | 144 |
| Steals per game | 6.1 | 5.5 |
| Blocks | 84 | 78 |
| Blocks per game | 3.2 | 3.0 |
| Winning streak | 0 | - |
| Home win streak | 2 | - |
| Attendance | 14400 | 4640 |
| Home games-Avg/Game | 12-1200 | 9-516 |
| Neutral site-Avg/Game | - | 5-476 |

Team Results

| Date | Opponent | | Score | Att. |
|------------|-------------------|-----|-------|------|
| 11/25/2020 | Georgia St. | W | 62-38 | 1200 |
| 11/29/2020 | Georgia | Lot | 69-75 | 1200 |
| 12/03/2020 | Tulane | W | 55-51 | 1200 |
| 12/09/2020 | Boston College | W | 86-68 | 1200 |
| 12/13/2020 | at Notre Dame | W | 82-67 | 93 |
| 12/31/2020 | NC State | L | 75-84 | 1200 |
| 01/03/2021 | at Notre Dame | L | 67-69 | 53 |
| 01/07/2021 | at Clemson | W | 67-55 | 452 |
| 01/10/2021 | Virginia Tech | W | 56-54 | 1200 |
| 01/21/2021 | at Wake Forest | W | 73-44 | 0 |
| 01/24/2021 | Florida St. | W | 66-58 | 1200 |
| 01/28/2021 | at Miami (FL) | W | 70-56 | 0 |
| 02/02/2021 | Syracuse | W | 76-63 | 1200 |
| 02/04/2021 | Clemson | W | 71-69 | 1200 |
| 02/07/2021 | Wake Forest | L | 52-61 | 1200 |
| 02/11/2021 | at Louisville | L | 70-85 | 2914 |
| 02/16/2021 | Miami (FL) | W | 67-56 | 1200 |
| 02/18/2021 | at Florida St. | W | 62-48 | 1128 |
| 02/21/2021 | at Boston College | L | 43-49 | 0 |
| 02/25/2021 | at North Carolina | L | 59-84 | 0 |
| 02/28/2021 | Pittsburgh | W | 65-60 | 1200 |
| 03/05/2021 | vs Clemson | W | 60-57 | 1259 |
| 03/06/2021 | vs NC State | L | 61-66 | 1122 |
| 03/21/2021 | vs SFA | Wot | 54-52 | 0 |
| 03/23/2021 | vs West Virginia | W | 73-56 | 0 |
| 03/28/2021 | vs South Carolina | L | 65-76 | 0 |

2020-21 ACC ONLY GEORGIA TECH STATISTICS


 2020-21 Georgia Tech Women's Basketball
 Combined Team Statistics
 In Conference games

 Page 1/1
 as of Mar 06, 2021

Game Records

| Record | Overall | Home | Away | Neutral |
|----------------|---------|------|------|---------|
| ALL GAMES | 12-6 | 7-2 | 5-4 | 0-0 |
| CONFERENCE | 12-6 | 7-2 | 5-4 | 0-0 |
| NON-CONFERENCE | 0-0 | 0-0 | 0-0 | 0-0 |

Score by Periods

| Team | 1st | 2nd | 3rd | 4th | OT | TOT |
|--------------|-----|-----|-----|-----|----|------|
| Georgia Tech | 305 | 267 | 320 | 315 | 0 | 1207 |
| Opponents | 287 | 251 | 288 | 304 | 0 | 1130 |

Team Box Score

| No. | Player | Total | | | 3-Point | | F-Throw | | Rebounds | | | | Other | | | | PTS | AVG | | | | |
|------------------|---------------------|-----------|-------------|------|-----------------|-------------|----------------|-------------|----------------|-------------|------------|------------|------------|-------------|------------|----------|------------|------------|-----------|------------|-------------|-------------|
| | | GP-GS | MIN | AVG | FG-FGA | FG% | 3FG-FGA | 3FG% | FT-FTA | FT% | OFF | DEF | TOT | AVG | PF | DQ | | | A | TO | BLK | STL |
| 31 | LAHTINEN, Lotta-Maj | 18-18 | 646:46 | 35.9 | 102-234 | .436 | 40-100 | .400 | 36-51 | .706 | 21 | 58 | 79 | 4.4 | 39 | 2 | 63 | 57 | 3 | 32 | 280 | 15.6 |
| 41 | FLETCHER, Kierra | 16-14 | 543:58 | 34.0 | 69-172 | .401 | 17-49 | .347 | 46-56 | .821 | 20 | 61 | 81 | 5.1 | 33 | 0 | 59 | 25 | 8 | 11 | 201 | 12.6 |
| 13 | CUBAJ, Lorela | 18-18 | 572:40 | 31.8 | 81-187 | .433 | 3-18 | .167 | 35-59 | .593 | 48 | 151 | 199 | 11.1 | 46 | 1 | 55 | 35 | 23 | 24 | 200 | 11.1 |
| 20 | HERMOSA, Nerea | 18-13 | 481:18 | 26.7 | 77-125 | .616 | 0-0 | .000 | 19-28 | .679 | 49 | 46 | 95 | 5.3 | 38 | 2 | 15 | 25 | 24 | 12 | 173 | 9.6 |
| 00 | MCQUEEN, Loyal | 17-13 | 479:07 | 28.2 | 49-127 | .386 | 26-67 | .388 | 23-40 | .575 | 3 | 18 | 21 | 1.2 | 30 | 0 | 42 | 31 | 0 | 3 | 147 | 8.6 |
| 3 | BATES, Sarah | 8-8 | 232:25 | 29.1 | 17-53 | .321 | 17-51 | .333 | 0-0 | .000 | 0 | 12 | 12 | 1.5 | 9 | 0 | 11 | 1 | 1 | 3 | 51 | 6.4 |
| 24 | LOVE, Eylia | 18-2 | 349:36 | 19.4 | 32-75 | .427 | 2-12 | .167 | 20-27 | .741 | 17 | 42 | 59 | 3.3 | 40 | 0 | 8 | 19 | 0 | 13 | 86 | 4.8 |
| 14 | CLARK, Anisa | 1-0 | 01:50 | 1.8 | 1-1 | 1.000 | 1-1 | 1.000 | 0-0 | .000 | 0 | 0 | 0 | 0.0 | 1 | 0 | 0 | 0 | 0 | 0 | 3 | 3.0 |
| 4 | BOYD, Anaya | 13-0 | 120:12 | 9.2 | 12-43 | .279 | 2-20 | .100 | 4-9 | .444 | 3 | 15 | 18 | 1.4 | 13 | 0 | 8 | 8 | 1 | 7 | 30 | 2.3 |
| 11 | WONE ARANAZ, Aixa | 5-4 | 86:10 | 17.2 | 5-14 | .357 | 0-0 | .000 | 1-1 | 1.000 | 5 | 2 | 7 | 1.4 | 5 | 0 | 8 | 2 | 1 | 2 | 11 | 2.2 |
| 15 | CARTER, Avyonce | 13-0 | 85:57 | 6.6 | 9-29 | .310 | 2-16 | .125 | 5-7 | .714 | 5 | 7 | 12 | 0.9 | 10 | 0 | 0 | 6 | 0 | 3 | 25 | 1.9 |
| Team | | | | | | | | | | | 31 | 31 | 62 | | | | | 8 | | | | |
| Total | | 18 | 3600 | | 454-1060 | .428 | 110-334 | .329 | 189-278 | .680 | 202 | 443 | 645 | 35.8 | 264 | 5 | 269 | 217 | 61 | 110 | 1207 | 67.1 |
| Opponents | | 18 | 3600 | | 432-1040 | .415 | 99-266 | .372 | 167-240 | .696 | 185 | 423 | 608 | 33.8 | 306 | 6 | 210 | 237 | 49 | 92 | 1130 | 62.8 |

Team Statistics

| | GATECH | OPP |
|------------------------|-----------------|-----------------|
| Scoring | 1207 | 1130 |
| Points per game | 67.1 | 62.8 |
| Scoring margin | +4.3 | - |
| Field goals-att | 454-1060 | 432-1040 |
| Field goal pct | .428 | .415 |
| 3 point fg-att | 110-334 | 99-266 |
| 3-point FG pct | .329 | .372 |
| 3-pt FG made per game | 6.1 | 5.5 |
| Free throws-att | 189-278 | 167-240 |
| Free throw pct | .680 | .696 |
| F-Throws made per game | 10.5 | 9.3 |
| Rebounds | 645 | 608 |
| Rebounds per game | 35.8 | 33.8 |
| Rebounding margin | +2.1 | - |
| Assists | 269 | 210 |
| Assists per game | 14.9 | 11.7 |
| Turnovers | 217 | 237 |
| Turnovers per game | 12.1 | 13.2 |
| Turnover margin | +1.1 | - |
| Assist/turnover ratio | 1.2 | 0.9 |
| Steals | 110 | 92 |
| Steals per game | 6.1 | 5.1 |
| Blocks | 61 | 49 |
| Blocks per game | 3.4 | 2.7 |
| Winning streak | 1 | - |
| Home win streak | 2 | - |
| Attendance | 10800 | 4640 |
| Home games-Avg/Game | 9-1200 | 9-516 |
| Neutral site-Avg/Game | - | 0-0 |

Team Results

| Date | Opponent | | Score | Att. |
|------------|-------------------|---|-------|------|
| 12/09/2020 | Boston College | W | 86-68 | 1200 |
| 12/13/2020 | at Notre Dame | W | 82-67 | 93 |
| 12/31/2020 | NC State | L | 75-84 | 1200 |
| 01/03/2021 | at Notre Dame | L | 67-69 | 53 |
| 01/07/2021 | at Clemson | W | 67-55 | 452 |
| 01/10/2021 | Virginia Tech | W | 56-54 | 1200 |
| 01/21/2021 | at Wake Forest | W | 73-44 | 0 |
| 01/24/2021 | Florida St. | W | 66-58 | 1200 |
| 01/28/2021 | at Miami (FL) | W | 70-56 | 0 |
| 02/02/2021 | Syracuse | W | 76-63 | 1200 |
| 02/04/2021 | Clemson | W | 71-69 | 1200 |
| 02/07/2021 | Wake Forest | L | 52-61 | 1200 |
| 02/11/2021 | at Louisville | L | 70-85 | 2914 |
| 02/16/2021 | Miami (FL) | W | 67-56 | 1200 |
| 02/18/2021 | at Florida St. | W | 62-48 | 1128 |
| 02/21/2021 | at Boston College | L | 43-49 | 0 |
| 02/25/2021 | at North Carolina | L | 59-84 | 0 |
| 02/28/2021 | Pittsburgh | W | 65-60 | 1200 |



GAME 1 | NOV. 25 | GEORGIA TECH 62, GEORGIA STATE 38



Official Basketball Box Score - Final
Georgia State at Georgia Tech
11/25/20 McCamish Pavilion, Atlanta
Georgia Tech vs. Georgia State

Game Time: 12:00 PM
Game Duration: 1:51
Attendance: 1,200

Officials: Dee Koster, Felicia Young, Mark McDemery

Georgia State - 38
Record: 0-1
Table with columns: NO. Name, Min, FG, 3P, FT, Rebounds, Fouls, TP, AS, TO, ST, Blocks, +/-

Shooting By Period
1st FG% 2-15 13.3%
3PT% 0-5 0.0%
FT% 1-1 100%

Georgia Tech - 62
Record: 1-0
Table with columns: NO. Name, Min, FG, 3P, FT, Rebounds, Fouls, TP, AS, TO, ST, Blocks, +/-

Shooting By Period
1st FG% 4-18 22.2%
3PT% 0-9 0.0%
FT% 4-4 100%

GSU GT
Biggest lead 0 (1st 10:00) 32 (4th 2:59)
Best Scoring Run 6 (4th 1:42) 9 (2nd 4:02)
Lead Changes 0
Times Tied 1
Time with Lead 00:00 37:44

GAME 3 | DEC. 3 | GEORGIA TECH 55, TULANE 51



Official Basketball Box Score - Final
Tulane at Georgia Tech
12/03/20 McCamish Pavilion, Atlanta
Georgia Tech vs. Tulane

Game Time: 6:00 PM
Game Duration: 1:51
Attendance: 1,200

Officials: Jeffrey Smith, Fatou Gasco-Stephens, Brandon Esterline

Tulane - 51
Record: 2-1
Table with columns: NO. Name, Min, FG, 3P, FT, Rebounds, Fouls, TP, AS, TO, ST, Blocks, +/-

Shooting By Period
1st FG% 5-17 29.4%
3PT% 0-4 0.0%
FT% 2-2 100%

Georgia Tech - 55
Record: 2-1
Table with columns: NO. Name, Min, FG, 3P, FT, Rebounds, Fouls, TP, AS, TO, ST, Blocks, +/-

Shooting By Period
1st FG% 6-13 46.2%
3PT% 0-3 0.0%
FT% 0-0 0%

TU GT
Biggest lead 6 (1st 7:48) 10 (4th 9:14)
Best Scoring Run 6 (1st 7:48) 8 (1st 2:11)
Lead Changes 5
Times Tied 7
Time with Lead 07:51 24:34

GAME 2 | NOV. 29 | GEORGIA 75, GEORGIA TECH 69 (OT)



Official Basketball Box Score - Final
Georgia at Georgia Tech
11/29/20 McCamish Pavilion, Atlanta
Georgia Tech vs. Georgia

Game Time: 2:00 PM
Game Duration: 2:11
Attendance: 1,200

Officials: Joseph Vaszy, Carla Fountain, Saif Esho

Georgia - 75
Record: 2-0
Table with columns: NO. Name, Min, FG, 3P, FT, Rebounds, Fouls, TP, AS, TO, ST, Blocks, +/-

Shooting By Period
1st FG% 8-16 50.0%
3PT% 0-4 0.0%
FT% 1-2 50%

Georgia Tech - 69
Record: 1-1
Table with columns: NO. Name, Min, FG, 3P, FT, Rebounds, Fouls, TP, AS, TO, ST, Blocks, +/-

Shooting By Period
1st FG% 6-16 37.5%
3PT% 2-6 33.3%
FT% 4-4 100%

UGA GT
Biggest lead 11 (2nd 2:59) 5 (1st 2:08)
Best Scoring Run 10 (2nd 2:59) 7 (3rd 8:25)
Lead Changes 8
Times Tied 6
Time with Lead 25:20 12:04

GAME 4 | DEC. 9 | GEORGIA TECH 86, BOSTON COLLEGE 68



Official Basketball Box Score - Final
Boston College at Georgia Tech
12/09/20 McCamish Pavilion, Atlanta
Georgia Tech vs. Boston College

Game Time: 11:00 AM
Game Duration: 1:46
Attendance: 1,200

Officials: Mj Forsberg, Bryan Brunette, Maggie Tennen

Boston College - 68
Record: 4-1 (0-1)
Table with columns: NO. Name, Min, FG, 3P, FT, Rebounds, Fouls, TP, AS, TO, ST, Blocks, +/-

Shooting By Period
1st FG% 8-15 53.3%
3PT% 2-7 28.6%
FT% 0-0 0%

Georgia Tech - 86
Record: 3-1 (1-0)
Table with columns: NO. Name, Min, FG, 3P, FT, Rebounds, Fouls, TP, AS, TO, ST, Blocks, +/-

Shooting By Period
1st FG% 12-20 60.0%
3PT% 3-7 42.9%
FT% 0-0 0%

BC GT
Biggest lead 3 (1st 9:37) 34 (3rd 3:02)
Best Scoring Run 11 (4th 8:25) 10 (3rd 3:02)
Lead Changes 1
Times Tied 0
Time with Lead 00:54 38:43

GAME 5 | DEC. 13 | GEORGIA TECH 82, NOTRE DAME 67



Official Basketball Box Score - Final
Georgia Tech at Notre Dame
12/13/20 Purcell Pavilion at the Joyce Center, Notre Dame, IN
2020-21 Women's Basketball

Game Time: 2:00 PM
Game Duration: 1:51
Attendance: 93

Officials: Joseph Vaszty, Billy Smith, Katie Lukachik

Georgia Tech - 82 Record: 4-1 (2-0)
Table with columns: NO., Name, Min, FG, 3P, FT, Rebounds, Fouls, TP, AS, TO, ST, Blocks, +/-

Shooting By Period
1st FG% 61.4 42.9%
2nd FG% 57.1 47.1%
3rd FG% 56.3 56.3%
4th FG% 62.5 62.5%

Totals 32-60 10-19 8-12 8 22 30 16 15 82 17 10 8 6 6 15

Technical Fouls: NONE

Dead Ball Rebounds: 1.0

Notre Dame - 67 Record: 2-3 (0-1)
Table with columns: NO., Name, Min, FG, 3P, FT, Rebounds, Fouls, TP, AS, TO, ST, Blocks, +/-

Shooting By Period
1st FG% 61.3 46.2%
2nd FG% 54.5 54.5%
3rd FG% 34.7 50.0%
4th FG% 50.0 50.0%

Totals 24-55 8-13 11-18 11 23 34 15 16 67 11 16 5 6 6 -15

Technical Fouls: NONE

Dead Ball Rebounds: 5.0

Summary statistics table including Best lead, Best Scoring Run, Lead Changes, Times Tied, Time with Lead, Points from Turnovers, Paint, Second Chance, Fast Breaks, Bench, Period by Period Scoring.

GAME 6 | DEC. 31 | NC STATE 84, GEORGIA TECH 75



Official Basketball Box Score - Final
NC State at Georgia Tech
12/31/20 McCamish Pavilion, Atlanta
Georgia Tech vs. NC State

Game Time: 7:00 PM
Game Duration: 1:49
Attendance: 1,200

Officials: Denise Brooks, Tiana Cruise, Talisa Green

NC State - 84 Record: 9-0 (4-0)
Table with columns: NO., Name, Min, FG, 3P, FT, Rebounds, Fouls, TP, AS, TO, ST, Blocks, +/-

Shooting By Period
1st FG% 12-17 70.6%
2nd FG% 10-18 55.6%
3rd FG% 4-12 33.3%
4th FG% 6-13 46.2%

Totals 32-60 10-19 8-12 8 22 30 16 15 82 17 10 8 6 6 15

Technical Fouls: NONE

Dead Ball Rebounds: 5.1

Georgia Tech - 75 Record: 4-2 (2-1)
Table with columns: NO., Name, Min, FG, 3P, FT, Rebounds, Fouls, TP, AS, TO, ST, Blocks, +/-

Shooting By Period
1st FG% 5-14 35.7%
2nd FG% 5-19 26.3%
3rd FG% 8-18 44.4%
4th FG% 7-9 77.8%

Summary statistics table including Best lead, Best Scoring Run, Lead Changes, Times Tied, Time with Lead, Points from Turnovers, Paint, Second Chance, Fast Breaks, Bench, Period by Period Scoring.

GAME 7 | JAN. 3 | NOTRE DAME 69, GEORGIA TECH 67



Official Basketball Box Score - Final
Georgia Tech at Notre Dame
01/03/21 Purcell Pavilion at the Joyce Center, Notre Dame, IN
2020-21 Women's Basketball

Game Time: 4:00 PM
Game Duration: 1:50
Attendance: 53

Officials: Pustan Sparlock-Welsh, Jeffrey Smith, Rod Creech

Georgia Tech - 67 Record: 4-3 (2-2)
Table with columns: NO., Name, Min, FG, 3P, FT, Rebounds, Fouls, TP, AS, TO, ST, Blocks, +/-

Shooting By Period
1st FG% 61.6 37.5%
2nd FG% 61.3 46.2%
3rd FG% 71.6 43.8%
4th FG% 61.4 42.9%

Totals 25-59 6-23 11-14 17 22 39 12 14 67 17 16 8 4 1 2

Technical Fouls: NONE

Dead Ball Rebounds: 1.0

Notre Dame - 69 Record: 5-4 (3-2)
Table with columns: NO., Name, Min, FG, 3P, FT, Rebounds, Fouls, TP, AS, TO, ST, Blocks, +/-

Shooting By Period
1st FG% 61.0 60.0%
2nd FG% 41.8 22.2%
3rd FG% 10-15 66.7%
4th FG% 8-15 53.3%

Totals 28-58 6-12 7-9 9 18 27 14 12 69 17 13 10 1 4 2

Technical Fouls: NONE

Dead Ball Rebounds: 1.1

Summary statistics table including Best lead, Best Scoring Run, Lead Changes, Times Tied, Time with Lead, Points from Turnovers, Paint, Second Chance, Fast Breaks, Bench, Period by Period Scoring.

GAME 8 | JAN. 7 | GEORGIA TECH 67, CLEMSON 55



Official Basketball Box Score - Final
Georgia Tech at Clemson
01/07/21 Littlejohn Coliseum, Clemson
2020-21 Clemson Women's Basketball

Game Time: 7:00 PM
Game Duration: 2:08
Attendance: 452

Officials: John Capolino, Katie Lukachik, Roy Jackson

Georgia Tech - 67 Record: 5-3 (3-2)
Table with columns: NO., Name, Min, FG, 3P, FT, Rebounds, Fouls, TP, AS, TO, ST, Blocks, +/-

Shooting By Period
1st FG% 6-15 40.0%
2nd FG% 9-19 47.4%
3rd FG% 5-18 27.8%
4th FG% 6-12 50.0%

Totals 26-64 8-21 7-17 17 21 38 17 18 67 14 11 6 7 4 12

Technical Fouls: NONE

Dead Ball Rebounds: 4.0

Clemson - 55 Record: 8-3 (3-3)
Table with columns: NO., Name, Min, FG, 3P, FT, Rebounds, Fouls, TP, AS, TO, ST, Blocks, +/-

Shooting By Period
1st FG% 6-12 50.0%
2nd FG% 6-19 31.6%
3rd FG% 3-14 21.4%
4th FG% 5-13 38.5%

Totals 22-58 4-11 11-18 19 26 45 18 17 55 11 7 4 4 7 -12

Technical Fouls: NONE

Dead Ball Rebounds: 5.1

Summary statistics table including Best lead, Best Scoring Run, Lead Changes, Times Tied, Time with Lead, Points from Turnovers, Paint, Second Chance, Fast Breaks, Bench, Period by Period Scoring.



GAME 9 | JAN. 10 | GEORGIA TECH 56, VIRGINIA TECH 54



Official Basketball Box Score - Final
Virginia Tech at Georgia Tech
01/10/21 McCormick Pavilion, Atlanta
Georgia Tech vs. Virginia Tech

Game Time: 2:00 PM
Game Duration: 1:48
Attendance: 1,200

Record: 6-4 (1-4)
Officials: Bruce Morris, Fatou Ousoko-Stephens, Brandon Esterline

Virginia Tech - 54
Box score table with columns for NO. Name, Min, FG, 3P, FT, Rebounds, Fouls, TP, AS, TO, ST, Blocks, +/-

Technical Fouls: NONE

Georgia Tech - 56
Box score table with columns for NO. Name, Min, FG, 3P, FT, Rebounds, Fouls, TP, AS, TO, ST, Blocks, +/-

Technical Fouls: NONE

Summary statistics table including: Biggest lead, Best Scoring Run, Lead Changes, Times Tied, Time with Lead, Points from Turnovers, Paint, Second Chance, Fast Breaks, Bench, Period by Period Scoring

GAME 10 | JAN. 21 | GEORGIA TECH 73, WAKE FOREST 44



Official Basketball Box Score - Final
Georgia Tech at Wake Forest
01/21/21 LJM Coliseum, Winston-Salem
2020-21 Women's Basketball

Game Time: 8:00 PM
Game Duration: 1:49

Record: 7-3 (5-2)
Officials: Joseph Vaszly, Jennifer Rezac, Alexis Perez

Georgia Tech - 73
Box score table with columns for NO. Name, Min, FG, 3P, FT, Rebounds, Fouls, TP, AS, TO, ST, Blocks, +/-

Technical Fouls: NONE

Wake Forest - 44
Box score table with columns for NO. Name, Min, FG, 3P, FT, Rebounds, Fouls, TP, AS, TO, ST, Blocks, +/-

Technical Fouls: NONE

Summary statistics table including: Biggest lead, Best Scoring Run, Lead Changes, Times Tied, Time with Lead, Points from Turnovers, Paint, Second Chance, Fast Breaks, Bench, Period by Period Scoring

GAME 11 | JAN. 24 | GEORGIA TECH 66, FLORIDA STATE 58



Official Basketball Box Score - Final
Florida St. at Georgia Tech
01/24/21 McCormick Pavilion, Atlanta
Georgia Tech vs. Florida State

Game Time: 1:00 PM
Game Duration: 1:47
Attendance: 1,200

Record: 5-3 (4-3)
Officials: Joseph Vaszly, Jules Gallion, Meadow Overstreet

Florida St. - 58
Box score table with columns for NO. Name, Min, FG, 3P, FT, Rebounds, Fouls, TP, AS, TO, ST, Blocks, +/-

Technical Fouls: NONE

Georgia Tech - 66
Box score table with columns for NO. Name, Min, FG, 3P, FT, Rebounds, Fouls, TP, AS, TO, ST, Blocks, +/-

Technical Fouls: NONE

Summary statistics table including: Biggest lead, Best Scoring Run, Lead Changes, Times Tied, Time with Lead, Points from Turnovers, Paint, Second Chance, Fast Breaks, Bench, Period by Period Scoring

GAME 12 | JAN. 28 | GEORGIA TECH 70, MIAMI 56



Official Basketball Box Score - Final
Georgia Tech at Miami (FL)
01/28/21 Moultrie Center, Coral Gables
2020-21 Women's Basketball

Game Time: 6:00 PM
Game Duration: 1:48

Record: 9-3 (7-2)
Officials: Eric Brewton, Krystle Appellaniz, John Capolino

Georgia Tech - 70
Box score table with columns for NO. Name, Min, FG, 3P, FT, Rebounds, Fouls, TP, AS, TO, ST, Blocks, +/-

Technical Fouls: NONE

Miami (FL) - 56
Box score table with columns for NO. Name, Min, FG, 3P, FT, Rebounds, Fouls, TP, AS, TO, ST, Blocks, +/-

Technical Fouls: NONE

Summary statistics table including: Biggest lead, Best Scoring Run, Lead Changes, Times Tied, Time with Lead, Points from Turnovers, Paint, Second Chance, Fast Breaks, Bench, Period by Period Scoring





GAME 13 | FEB. 2 | GEORGIA TECH 76, SYRACUSE 63



Official Basketball Box Score - Final
Syracuse at Georgia Tech
02/02/21 McCamish Pavilion, Atlanta

Game Time: 6:00 PM
Game Duration: 1:45
Attendance: 1,200

Officials: Dee Karner, Billy Smith, Rod Creech

Table with columns: NO. Name, Min, FG, 3P, FT, Rebounds, Fouls, TP, AS, TO, ST, Blocks, +/-, Shooting By Period.

Table with columns: 1st FG%, 3PT%, FT%, 2nd FG%, 3PT%, FT%, 3rd FG%, 3PT%, FT%, 4th FG%, 3PT%, FT%, GM FG%, 3PT%, FT%, Dead Ball Rebounds.

Table with columns: NO. Name, Min, FG, 3P, FT, Rebounds, Fouls, TP, AS, TO, ST, Blocks, +/-, Shooting By Period.

Table with columns: 1st FG%, 3PT%, FT%, 2nd FG%, 3PT%, FT%, 3rd FG%, 3PT%, FT%, 4th FG%, 3PT%, FT%, GM FG%, 3PT%, FT%, Dead Ball Rebounds.

Summary table with columns: SYR, GT, Points from Turnovers, SYR, GT, Period by Period Scoring.

GAME 14 | FEB. 4 | GEORGIA TECH 71, CLEMSON 69



Official Basketball Box Score - Final
Clemson at Georgia Tech
02/04/21 McCamish Pavilion, Atlanta

Game Time: 7:00 PM
Game Duration: 2:03
Attendance: 1,200

Officials: Karen Presto, Daryl Humphrey, Bryan Brunette

Table with columns: NO. Name, Min, FG, 3P, FT, Rebounds, Fouls, TP, AS, TO, ST, Blocks, +/-, Shooting By Period.

Table with columns: 1st FG%, 3PT%, FT%, 2nd FG%, 3PT%, FT%, 3rd FG%, 3PT%, FT%, 4th FG%, 3PT%, FT%, GM FG%, 3PT%, FT%, Dead Ball Rebounds.

Table with columns: NO. Name, Min, FG, 3P, FT, Rebounds, Fouls, TP, AS, TO, ST, Blocks, +/-, Shooting By Period.

Table with columns: 1st FG%, 3PT%, FT%, 2nd FG%, 3PT%, FT%, 3rd FG%, 3PT%, FT%, 4th FG%, 3PT%, FT%, GM FG%, 3PT%, FT%, Dead Ball Rebounds.

Summary table with columns: CLEM, GT, Points from Turnovers, CLEM, GT, Period by Period Scoring.

GAME 15 | FEB. 7 | WAKE FOREST 71, GEORGIA TECH 52



Official Basketball Box Score - Final
Wake Forest at Georgia Tech
02/07/21 McCamish Pavilion, Atlanta

Game Time: 12:00 PM
Game Duration: 1:45
Attendance: 1,200

Officials: Mark Hercowitz, Talea Green, Kevin Dilard

Table with columns: NO. Name, Min, FG, 3P, FT, Rebounds, Fouls, TP, AS, TO, ST, Blocks, +/-, Shooting By Period.

Table with columns: 1st FG%, 3PT%, FT%, 2nd FG%, 3PT%, FT%, 3rd FG%, 3PT%, FT%, 4th FG%, 3PT%, FT%, GM FG%, 3PT%, FT%, Dead Ball Rebounds.

Table with columns: NO. Name, Min, FG, 3P, FT, Rebounds, Fouls, TP, AS, TO, ST, Blocks, +/-, Shooting By Period.

Table with columns: 1st FG%, 3PT%, FT%, 2nd FG%, 3PT%, FT%, 3rd FG%, 3PT%, FT%, 4th FG%, 3PT%, FT%, GM FG%, 3PT%, FT%, Dead Ball Rebounds.

Summary table with columns: WFU, GT, Points from Turnovers, WFU, GT, Period by Period Scoring.

GAME 16 | FEB. 11 | LOUISVILLE 85, GEORGIA TECH 70



Official Basketball Box Score - Final
Georgia Tech vs Louisville
02/11/21 KY Center, Louisville

Game Time: 7:02 PM
Game Duration: 1:49

Georgia Tech - 70 • 11-5 (9-4)

Table with columns: # Player, Total, 3-Ptr, FT-FTA, Rebounds, PF, TP, A, TO, Blk, Stl, Min.

Table with columns: FG % 1st, 2nd, 3rd, 4th, 5th, 6th, 7th, 8th, 9th, 10th, 11th, 12th, 3PT % 1st, 2nd, 3rd, 4th, 5th, 6th, 7th, 8th, 9th, 10th, 11th, 12th, FT % 1st, 2nd, 3rd, 4th, 5th, 6th, 7th, 8th, 9th, 10th, 11th, 12th, GM FG %, 3PT %, FT %, Dead Ball Rebounds.

Louisville - 85 • 19-1 (12-1)

Table with columns: # Player, Total, 3-Ptr, FT-FTA, Rebounds, PF, TP, A, TO, Blk, Stl, Min.

Table with columns: FG % 1st, 2nd, 3rd, 4th, 5th, 6th, 7th, 8th, 9th, 10th, 11th, 12th, 3PT % 1st, 2nd, 3rd, 4th, 5th, 6th, 7th, 8th, 9th, 10th, 11th, 12th, FT % 1st, 2nd, 3rd, 4th, 5th, 6th, 7th, 8th, 9th, 10th, 11th, 12th, GM FG %, 3PT %, FT %, Dead Ball Rebounds.

Summary table with columns: Score by periods, 1st, 2nd, 3rd, 4th, Total, Points, In, Off, 2nd, Fast, Break, Bench.

Technical Fouls: Georgia Tech - K Fletcher, Louisville - M Robinson. Attendance: 2914.



GAME 21 | FEB. 28 | GEORGIA TECH 65, PITT 60



Official Basketball Box Score - Final
Pittsburgh at Georgia Tech

Game Time: 2:00 PM
Game Duration: 2:04
Attendance: 1,200

Officials: Carla Fountain, Jennifer Rizzo, Brandon Esterline

Table with columns: NO. Name, Min, FG, 3P, FT, Rebounds, Fouls, TP, AS, TO, ST, Blocks, +/-

Shooting By Period
1st FG% 6-17 35.3%
3PT% 1-4 25.0%

Georgia Tech - 65
Record: 14-7 (12-6)
Table with columns: NO. Name, Min, FG, 3P, FT, Rebounds, Fouls, TP, AS, TO, ST, Blocks, +/-

Shooting By Period
1st FG% 6-19 31.6%
3PT% 1-8 12.5%

Biggest lead 0 (1st 10:00)
Best Scoring Run 8 (4th 5:41)
Lead Changes 5

Points from Turnovers Pitt 9 GT 16
Paint Pitt 28 GT 22
Second Chance Pitt 4 GT 7

Period by Period Scoring
1st 2nd 3rd 4th TOT
Pitt 13 12 17 18 60
GT 15 17 16 17 65

GAME 22 | MARCH 5 | GEORGIA TECH 60, CLEMSON 57



Official Basketball Box Score - Final
Clemson at Georgia Tech

Game Time: 8:30 PM
Game Duration: 1:53
Attendance: 1,259

Officials: Brian Brunette, Ed Sidasky, Tiana Cruise

Clemson - 57
Record: 11-13
Table with columns: NO. Name, Min, FG, 3P, FT, Rebounds, Fouls, TP, AS, TO, ST, Blocks, +/-

Shooting By Period
1st FG% 7-14 50.0%
3PT% 1-5 20.0%

Georgia Tech - 60
Record: 15-7
Table with columns: NO. Name, Min, FG, 3P, FT, Rebounds, Fouls, TP, AS, TO, ST, Blocks, +/-

Shooting By Period
1st FG% 7-14 50.0%
3PT% 1-4 25.0%

Biggest lead 8 (2nd 8:00)
Best Scoring Run 8 (2nd 8:00)
Lead Changes 5

Points from Turnovers CLE 7 GAT 12
Paint CLE 30 GAT 28
Second Chance CLE 12 GAT 9

Period by Period Scoring
1st 2nd 3rd 4th TOT
CLE 15 13 16 57
GAT 15 18 17 10 60

GAME 23 | MARCH 6 | NC STATE 66, GEORGIA TECH 61



Official Basketball Box Score - Final
Georgia Tech at NC State

Game Time: 2:30 PM
Game Duration: 1:45
Attendance: 1,122

Officials: Denise Brooks, Maj Forsberg, Billy Smith

Georgia Tech - 61
Record: 15-8
Table with columns: NO. Name, Min, FG, 3P, FT, Rebounds, Fouls, TP, AS, TO, ST, Blocks, +/-

Shooting By Period
1st FG% 7-16 43.8%
3PT% 0-5 0.0%

NC State - 66
Record: 19-2
Table with columns: NO. Name, Min, FG, 3P, FT, Rebounds, Fouls, TP, AS, TO, ST, Blocks, +/-

Shooting By Period
1st FG% 7-17 41.2%
3PT% 3-5 60.0%

Biggest lead 10 (4th 8:51)
Best Scoring Run 7 (3rd 9:00)
Lead Changes 6

Points from Turnovers GAT 8 NCS 7
Paint GAT 36 NCS 32
Second Chance GAT 5 NCS 9

Period by Period Scoring
1st 2nd 3rd 4th OT TOT
GAT 14 19 15 13 61
NCS 18 10 15 23 66

GAME 24 | MARCH 21 | GEORGIA TECH 54, SFA 52



Official Basketball Box Score - Final
SFA at Georgia Tech

Game Time: 3:30 PM
Game Duration: 2:24

Officials: Michael Price, Tiana Cruise, Demoya Williams

SFA - 52
Record: 24-3
Table with columns: NO. Name, Min, FG, 3P, FT, Rebounds, Fouls, TP, AS, TO, ST, Blocks, +/-

Shooting By Period
1st FG% 6-14 42.9%
3PT% 3-7 42.9%

Georgia Tech - 54
Record: 16-8
Table with columns: NO. Name, Min, FG, 3P, FT, Rebounds, Fouls, TP, AS, TO, ST, Blocks, +/-

Shooting By Period
1st FG% 4-16 25.0%
3PT% 1-6 16.7%

Biggest lead 17 (2nd 0:00)
Best Scoring Run 8 (1st 0:07)
Lead Changes 2

Points from Turnovers SFA 10 GAT 16
Paint SFA 22 GAT 32
Second Chance SFA 14 GAT 6

Period by Period Scoring
1st 2nd 3rd 4th OT TOT
SFA 17 17 5 9 4 52
GAT 10 7 19 12 6 54



HEAD COACH NELL FORTNER

3rd Season • Texas '82

Nell Fortner was named the sixth head coach of Georgia Tech women's basketball on April 9, 2019. One of the most successful coaches in women's basketball history, Fortner has compiled a 342-207 (.621) record as a head coach at the collegiate, professional and international levels. She has led teams to Big Ten (Purdue – 1997) and Southeastern Conference (Auburn – 2009) championships and, perhaps most notably, coached the United States national team to three international titles from 1997-2000, including the gold medal at the 2000 Summer Olympics in Sydney, Australia. Fortner is the winningest coach in the history of the USA women's basketball national team, having compiled a 101-14 (.878) record. In addition to the 2000 Olympics championship, she also led the team to the gold medal at the 1998 World Championship in Berlin, Germany and the 1998 William Jones Cup in Taipei, Taiwan. At the collegiate level, Fortner has 11 seasons of experience as a head coach – one at Purdue (1996-97), eight at Auburn (2004-12) and two at Georgia Tech (2019-21) – and has compiled a 199-137 (.587) overall record in the college ranks.

THE FORTNER FILE

PERSONAL

Education Texas, 1982 (Physical Education);
Stephen F. Austin, 1987 (Master's of Education)

COACHING EXPERIENCE

| | |
|--------------|---|
| 1983-86 | Head Coach, Killen (Texas) H.S. |
| 1986-87 | Graduate Assistant, Stephen F. Austin |
| 1987-90 | Assistant Coach, Stephen F. Austin |
| 1990-95 | Assistant Coach, Louisiana Tech |
| 1995-96 | Assistant Coach, U.S. National Team |
| 1996-97 | Head Coach, Purdue |
| 1997-2000 | Head Coach, U.S. National Team |
| 2000-03 | Head Coach/General Manager, Indiana Fever |
| 2004-12 | Head Coach, Auburn |
| 2019-Present | Head Coach, Georgia Tech |

COLLEGE COACHING RECORD

| SEASON | SCHOOL | RECORD | ACC FINISH | POSTSEASON |
|----------------|---------------------|--------------|------------|------------------------------|
| 1987-88 | Stephen F. Austin | 29-5 | -- | NCAA Tour. 2nd rd. |
| 1988-89 | Stephen F. Austin | 30-4 | -- | NCAA Tour. 2nd rd. |
| 1989-90 | Stephen F. Austin | 28-3 | -- | NCAA Tour. 2nd rd. |
| 1990-91 | Louisiana Tech | 18-12 | -- | NCAA Tour. 1st rd. |
| 1991-92 | Louisiana Tech | 20-10 | -- | NCAA Tour. 1st rd. |
| 1992-93 | Louisiana Tech | 26-6 | -- | NCAA Tour. Elite 8 |
| 1993-94 | Louisiana Tech | 31-4 | -- | NCAA Tour. Runners-Up |
| 1994-95 | Louisiana Tech | 28-5 | -- | NCAA Tour. Sweet 16 |
| 1996-97 | Purdue | 17-11 | -- | NCAA Tour. 2nd rd. |
| 2004-05 | Auburn | 16-13 | -- | |
| 2005-06 | Auburn | 14-15 | -- | |
| 2006-07 | Auburn | 21-13 | -- | WNIT Quarterfinals |
| 2007-08 | Auburn | 20-12 | -- | NCAA Tournament |
| 2008-09 | Auburn | 30-4 | -- | NCAA Tour. 2nd rd. |
| 2009-10 | Auburn | 15-16 | -- | |
| 2010-11 | Auburn | 16-16 | -- | WNIT 2nd rd. |
| 2011-12 | Auburn | 13-17 | -- | |
| 2019-20 | Georgia Tech | 20-11 | 7th | Canceled due to Covid |
| 2020-21 | Georgia Tech | 17-9 | 3rd | NCAA Tour. |

Bold = Head Coach

HEAD COACH (10 SEASONS) 199-137 (.591)

ASSISTANT COACH (8 SEASONS) 210-49 (.811)

18 OVERALL SEASONS 409-186 (.689)

| | |
|-------------------------------|----------------|
| Stephen F. Austin (3 seasons) | 87-12 (.879) |
| Louisiana Tech (5 seasons) | 123-37 (.769) |
| Purdue (1 season) | 17-11 (.607) |
| Auburn (8 seasons) | 145-106 (.578) |
| Georgia Tech (2 seasons) | 37-20 (.645) |

FORTNER PROFESSIONAL COACHING

PROFESSIONAL COACHING EXPERIENCE

| SEASON | TEAM | RECORD |
|------------------|-----------------------|---------------|
| 1997-2000 | USA Basketball | 101-14 |
| 2001 | Indiana Fever | 10-22 |
| 2002 | Indiana Fever | 16-16 |
| 2003 | Indiana Fever | 16-18 |

Overall with U.S. national team 101-14 (.878)
Overall with Indiana Fever 42-56 (.429)

USA WOMEN'S BASKETBALL TOURNAMENT MEDALS

| Tournament | Record | Place |
|------------------------------|--------|--------|
| 2000 Olympic Games | 8-0 | Gold |
| 1999 Pan American Games | 4-3 | Bronze |
| 1998 FIBA World Championship | 9-0 | Gold |
| 1998 R. William Jones Cup | 5-0 | Gold |

FORTNER HEAD COACHING EXPERIENCE

| | |
|-----------|---|
| 1996-97 | Purdue (17-11, 12-4 Big Ten - Big Ten regular-season champion, NCAA Tournament) |
| 1997-2000 | U.S. National Team (101-14) |
| 2001 | Indiana Fever (10-22) |
| 2002 | Indiana Fever (16-16) |
| 2003 | Indiana Fever (16-18) |
| 2004-05 | Auburn (16-13, 6-8 SEC) |
| 2005-06 | Auburn (14-15, 4-10 SEC) |
| 2006-07 | Auburn (21-13, 6-8 SEC) |
| 2007-08 | Auburn (20-12, 7-7 SEC - NCAA Tournament) |
| 2008-09 | Auburn (30-4, 12-2 SEC - SEC regular-season champion, NCAA Tournament) |
| 2009-10 | Auburn (15-16, 5-11 SEC) |
| 2010-11 | Auburn (16-16, 8-8 SEC - WNIT) |
| 2011-12 | Auburn (13-17, 5-11 SEC - WNIT) |
| 2019-20 | Georgia Tech (20-11, 10-8 ACC) |
| 2020-21 | Georgia Tech (17-9) |

Overall at Purdue 17-11 (.607)
Overall with U.S. national team 101-14 (.878)
Overall with Indiana Fever 42-56 (.429)
Overall at Auburn 145-106 (.578)
Overall as a college head coach 199-137 (.591)
Overall as a head coach 342-207 (.621)

CAREER STATS

Aixa Wone Aranaz

| Season | gp-gs | min/avg | Total | | 3-Point | | F-Throws | | Rebounds | | | | pf | fo | ast | to | blk | stl | Scoring | |
|--------------|------------|-----------------|-------------|-------------|------------|-------------|------------|-------------|----------|-----------|-----------|------------|-----------|----------|-----------|----------|----------|----------|-----------|------------|
| | | | fg-fga | pct | fg-fga | pct | ft-fta | pct | off | def | tot | avg | | | | | | | pts | avg |
| 2020-21 | 8-4 | 152/19.0 | 8-27 | .296 | 0-2 | .000 | 4-5 | .800 | 9 | 12 | 21 | 2.6 | 12 | 0 | 13 | 4 | 1 | 2 | 20 | 2.5 |
| TOTAL | 8-4 | 152/19.0 | 8-27 | .296 | 0-2 | .000 | 4-5 | .800 | 9 | 12 | 21 | 2.6 | 12 | 0 | 13 | 4 | 1 | 2 | 20 | 2.5 |

Sarah Bates

| Season | gp-gs | min/avg | Total | | 3-Point | | F-Throws | | Rebounds | | | | pf | fo | ast | to | blk | stl | Scoring | |
|--------------|--------------|-----------------|--------------|-------------|--------------|-------------|------------|-------------|----------|-----------|-----------|------------|-----------|----------|-----------|----------|----------|----------|-----------|------------|
| | | | fg-fga | pct | fg-fga | pct | ft-fta | pct | off | def | tot | avg | | | | | | | pts | avg |
| 2019-20 | 17-0 | 82/4.8 | 6-24 | .250 | 3-16 | .188 | 3-5 | .600 | 0 | 6 | 6 | 0.4 | 6 | 0 | 3 | 5 | 0 | 3 | 18 | 1.1 |
| 2020-21 | 11-11 | 325/29.5 | 25-73 | .342 | 24-69 | .348 | 2-2 | 1.000 | 0 | 21 | 21 | 1.9 | 12 | 0 | 13 | 3 | 1 | 4 | 76 | 6.9 |
| TOTAL | 28-11 | 407/14.5 | 31-97 | .320 | 27-85 | .318 | 5-7 | .714 | 0 | 27 | 27 | 1.0 | 18 | 0 | 16 | 8 | 1 | 7 | 94 | 3.4 |

Anaya Boyd

| Season | gp-gs | min/avg | Total | | 3-Point | | F-Throws | | Rebounds | | | | pf | fo | ast | to | blk | stl | Scoring | |
|--------------|-------------|----------------|--------------|-------------|-------------|-------------|--------------|-------------|----------|-----------|-----------|------------|-----------|----------|-----------|-----------|----------|----------|-----------|------------|
| | | | fg-fga | pct | fg-fga | pct | ft-fta | pct | off | def | tot | avg | | | | | | | pts | avg |
| 2020-21 | 19-0 | 178/9.4 | 15-53 | .283 | 2-21 | .095 | 10-17 | .588 | 4 | 23 | 27 | 1.4 | 17 | 0 | 10 | 10 | 2 | 9 | 42 | 2.2 |
| TOTAL | 19-0 | 178/9.4 | 15-53 | .283 | 2-21 | .095 | 10-17 | .588 | 4 | 23 | 27 | 1.4 | 17 | 0 | 10 | 10 | 2 | 9 | 42 | 2.2 |

Avyonce Carter

| Season | gp-gs | min/avg | Total | | 3-Point | | F-Throws | | Rebounds | | | | pf | fo | ast | to | blk | stl | Scoring | |
|--------------|-------------|----------------|-------------|-------------|-------------|-------------|-------------|-------------|----------|-----------|-----------|------------|-----------|----------|----------|----------|----------|----------|-----------|------------|
| | | | fg-fga | pct | fg-fga | pct | ft-fta | pct | off | def | tot | avg | | | | | | | pts | avg |
| 2020-21 | 15-0 | 101/6.7 | 9-33 | .273 | 2-20 | .100 | 9-13 | .692 | 5 | 11 | 16 | 1.1 | 11 | 0 | 2 | 9 | 0 | 4 | 29 | 1.9 |
| TOTAL | 15-0 | 101/6.7 | 9-33 | .273 | 2-20 | .100 | 9-13 | .692 | 5 | 11 | 16 | 1.1 | 11 | 0 | 2 | 9 | 0 | 4 | 29 | 1.9 |

Anisa Clark

| Season | gp-gs | min/avg | Total | | 3-Point | | F-Throws | | Rebounds | | | | pf | fo | ast | to | blk | stl | Scoring | |
|--------------|------------|--------------|------------|--------------|------------|--------------|------------|-------------|----------|----------|----------|------------|----------|----------|----------|----------|----------|----------|----------|------------|
| | | | fg-fga | pct | fg-fga | pct | ft-fta | pct | off | def | tot | avg | | | | | | | pts | avg |
| 2020-21 | 3-0 | 4/1.3 | 1-1 | 1.000 | 1-1 | 1.000 | 0-0 | .000 | 0 | 0 | 0 | 0.0 | 1 | 0 | 0 | 0 | 0 | 0 | 3 | 1.0 |
| TOTAL | 3-0 | 4/1.3 | 1-1 | 1.000 | 1-1 | 1.000 | 0-0 | .000 | 0 | 0 | 0 | 0.0 | 1 | 0 | 0 | 0 | 0 | 0 | 3 | 1.0 |

Lorela Cubaj

| Season | gp-gs | min/avg | Total | | 3-Point | | F-Throws | | Rebounds | | | | pf | fo | ast | to | blk | stl | Scoring | |
|--------------|----------------|------------------|----------------|-------------|--------------|-------------|----------------|-------------|------------|------------|------------|------------|------------|----------|------------|------------|------------|------------|------------|------------|
| | | | fg-fga | pct | fg-fga | pct | ft-fta | pct | off | def | tot | avg | | | | | | | pts | avg |
| 2017-18 | 34-32 | 701/20.6 | 57-173 | .329 | 1-6 | .167 | 12-26 | .462 | 46 | 104 | 150 | 4.4 | 72 | 1 | 50 | 52 | 26 | 46 | 127 | 3.7 |
| 2018-19 | 30-29 | 851/28.4 | 90-220 | .409 | 1-4 | .250 | 28-56 | .500 | 70 | 149 | 219 | 7.3 | 96 | 2 | 59 | 70 | 31 | 44 | 209 | 7.0 |
| 2019-20 | 31-30 | 1060/34.2 | 128-285 | .449 | 7-25 | .280 | 48-83 | .578 | 64 | 176 | 240 | 7.7 | 88 | 1 | 76 | 59 | 37 | 36 | 311 | 10.0 |
| 2020-21 | 26-26 | 864/33.2 | 137-312 | .439 | 6-31 | .194 | 45-76 | .592 | 70 | 230 | 300 | 11.5 | 70 | 1 | 74 | 59 | 34 | 34 | 325 | 12.5 |
| TOTAL | 121-117 | 3476/28.7 | 412-990 | .416 | 15-66 | .227 | 133-241 | .552 | 250 | 659 | 909 | 7.5 | 326 | 5 | 259 | 240 | 128 | 160 | 972 | 8.0 |

Kierra Fletcher

| Season | gp-gs | min/avg | Total | | 3-Point | | F-Throws | | Rebounds | | | | pf | fo | ast | to | blk | stl | Scoring | |
|--------------|----------------|------------------|----------------|-------------|--------------|-------------|----------------|-------------|------------|------------|------------|------------|------------|----------|------------|------------|-----------|------------|-------------|------------|
| | | | fg-fga | pct | fg-fga | pct | ft-fta | pct | off | def | tot | avg | | | | | | | pts | avg |
| 2017-18 | 34-34 | 902/26.5 | 98-233 | .421 | 0-2 | .000 | 61-102 | .598 | 57 | 120 | 177 | 5.2 | 88 | 2 | 78 | 60 | 10 | 55 | 257 | 7.6 |
| 2018-19 | 27-27 | 853/31.6 | 81-221 | .367 | 0-3 | .000 | 79-111 | .712 | 60 | 96 | 156 | 5.8 | 68 | 2 | 74 | 67 | 10 | 47 | 241 | 8.9 |
| 2019-20 | 31-31 | 1091/35.2 | 119-268 | .444 | 2-15 | .133 | 76-106 | .717 | 81 | 112 | 193 | 6.2 | 65 | 1 | 95 | 63 | 9 | 40 | 316 | 10.2 |
| 2020-21 | 21-19 | 740/35.2 | 99-238 | .416 | 23-64 | .359 | 52-69 | .754 | 35 | 81 | 116 | 5.5 | 40 | 0 | 78 | 35 | 11 | 17 | 273 | 13.0 |
| TOTAL | 113-111 | 3586/31.7 | 397-960 | .414 | 25-84 | .298 | 268-388 | .691 | 233 | 409 | 642 | 5.7 | 261 | 5 | 325 | 225 | 40 | 159 | 1087 | 9.6 |

Nerea Hermosa

| Season | gp-gs | min/avg | Total | | 3-Point | | F-Throws | | Rebounds | | | | pf | fo | ast | to | blk | stl | Scoring | |
|--------------|--------------|------------------|----------------|-------------|------------|-------------|--------------|-------------|------------|------------|------------|------------|------------|----------|-----------|-----------|-----------|-----------|------------|------------|
| | | | fg-fga | pct | fg-fga | pct | ft-fta | pct | off | def | tot | avg | | | | | | | pts | avg |
| 2019-20 | 31-15 | 664/21.4 | 89-165 | .539 | 0-0 | .000 | 25-44 | .568 | 57 | 69 | 126 | 4.1 | 59 | 1 | 24 | 49 | 21 | 19 | 203 | 6.5 |
| 2020-21 | 26-21 | 672/25.8 | 95-170 | .559 | 0-0 | .000 | 21-32 | .656 | 62 | 67 | 129 | 5.0 | 58 | 3 | 21 | 33 | 27 | 15 | 211 | 8.1 |
| TOTAL | 57-36 | 1336/23.4 | 184-335 | .549 | 0-0 | .000 | 46-76 | .605 | 119 | 136 | 255 | 4.5 | 117 | 4 | 45 | 82 | 48 | 34 | 414 | 7.3 |

CAREER STATS

Lotta-Maj Lahtinen

| Season | gp-gs | min/avg | Total | | 3-Point | | F-Throws | | Rebounds | | | | pf | fo | ast | to | blk | stl | Scoring | |
|--------------|--------------|------------------|----------------|-------------|---------------|-------------|----------------|-------------|------------|------------|------------|------------|------------|----------|------------|------------|-----------|------------|------------|------------|
| | | | fg-fga | pct | fg-fga | pct | ft-fa | pct | off | def | tot | avg | | | | | | | pts | avg |
| 2018-19 | 30-5 | 602/20.1 | 53-159 | .333 | 13-49 | .265 | 23-31 | .742 | 31 | 34 | 65 | 2.2 | 67 | 3 | 66 | 65 | 2 | 48 | 142 | 4.7 |
| 2019-20 | 31-30 | 1015/32.7 | 108-275 | .393 | 29-101 | .287 | 36-66 | .545 | 52 | 81 | 133 | 4.3 | 70 | 0 | 81 | 68 | 4 | 42 | 281 | 9.1 |
| 2020-21 | 26-26 | 948/36.5 | 147-342 | .430 | 47-137 | .343 | 48-66 | .727 | 33 | 86 | 119 | 4.6 | 59 | 2 | 90 | 82 | 5 | 50 | 389 | 15.0 |
| TOTAL | 87-61 | 2565/29.5 | 308-776 | .397 | 89-287 | .310 | 107-163 | .656 | 116 | 201 | 317 | 3.6 | 196 | 5 | 237 | 215 | 11 | 140 | 812 | 9.3 |

Eylia Love

| Season | gp-gs | min/avg | Total | | 3-Point | | F-Throws | | Rebounds | | | | pf | fo | ast | to | blk | stl | Scoring | |
|--------------|-------------|-----------------|---------------|-------------|-------------|-------------|--------------|-------------|-----------|-----------|-----------|------------|-----------|----------|----------|-----------|----------|-----------|------------|------------|
| | | | fg-fga | pct | fg-fga | pct | ft-fa | pct | off | def | tot | avg | | | | | | | pts | avg |
| 2020-21 | 26-2 | 496/19.1 | 43-100 | .430 | 4-14 | .286 | 28-38 | .737 | 26 | 56 | 82 | 3.2 | 55 | 0 | 9 | 28 | 1 | 17 | 118 | 4.5 |
| TOTAL | 26-2 | 496/19.1 | 43-100 | .430 | 4-14 | .286 | 28-38 | .737 | 26 | 56 | 82 | 3.2 | 55 | 0 | 9 | 28 | 1 | 17 | 118 | 4.5 |

Loyal McQueen

| Season | gp-gs | min/avg | Total | | 3-Point | | F-Throws | | Rebounds | | | | pf | fo | ast | to | blk | stl | Scoring | |
|--------------|--------------|-----------------|---------------|-------------|---------------|-------------|--------------|-------------|----------|-----------|-----------|------------|-----------|----------|-----------|-----------|----------|----------|------------|------------|
| | | | fg-fga | pct | fg-fga | pct | ft-fa | pct | off | def | tot | avg | | | | | | | pts | avg |
| 2020-21 | 25-21 | 770/30.8 | 75-197 | .381 | 39-106 | .368 | 31-51 | .608 | 5 | 29 | 34 | 1.4 | 41 | 0 | 54 | 50 | 1 | 6 | 220 | 8.8 |
| TOTAL | 25-21 | 770/30.8 | 75-197 | .381 | 39-106 | .368 | 31-51 | .608 | 5 | 29 | 34 | 1.4 | 41 | 0 | 54 | 50 | 1 | 6 | 220 | 8.8 |



LOYAL McQUEEN

#00

Sophomore • 5'8" • Guard • Florence, S.C. • Wilson

THE McQUEEN FILE

KEY SEASON AVERAGES (2021-22)

| | | |
|------------|------------|------------|
| Points | Rebounds | Assists |
| 8.8 | 1.4 | 2.2 |

CAREER & SEASON HIGHS

Points

Career: 17 vs. Clemson (2/4/21)

Field Goals

Career: 6, 2x, last vs. Clemson (2/4/21)

Field Goals Attempted

Career: 16 vs. Georgia (11/29/20)

3- Point Field Goals

Career: 4, 2x, last vs. Clemson (3/5/21)

3- Point Field Goals Attempted

Career: 8 vs. Clemson (3/5/21)

Free Throws

Career: 6 vs. Florida State (1/24/21)

Free Throws Attempted

Career: 6, 3x, last at Boston College (2/21/21)

Rebounds

Career: 4, 3x, last at Miami (1/28/21)

Assists

Career: 7 vs. Clemson (2/4/21)

Steals

Career: 2 vs. Clemson (2/4/21)

Blocks

Career: 1 vs. Tulane (12/3/20)

Turnovers

Career: 4, 7x, last at Boston College (2/21/21)

Minutes

Career: 42 vs. Georgia (11/29/20)

Miscellaneous

| | | |
|--------------------------|--------|-------|
| | Career | 20-21 |
| Double-Doubles: | - | - |
| Double Figure Points: | 10 | 10 |
| Double Figure Rebounds: | - | - |
| Led Team In Points/Rebs: | 1/0 | 1/0 |
| 20+ Points: | - | - |

2020-21 GAME-BY-GAME

#00 McQUEEN, Loyal

| Opponent | Date | GS | MIN | Total | | 3-Pointers | | Free throws | | Rebounds | | | | PF | A | T/O | BLK | STL | PTS | AVG |
|-------------------|------------|----|-----------|---------------|-------------|---------------|-------------|--------------|-------------|----------|-----------|-----------|------------|-----------|-----------|-----------|----------|----------|------------|------------|
| | | | | FG-FGA | PCT | 3FG-3FGA | PCT | FT-FTA | PCT | OFF | DEF | TOT | AVG | | | | | | | |
| Georgia St. | 11/25/2020 | * | 31:10 | 4-13 | .308 | 1-6 | .167 | 3-4 | .750 | 0 | 3 | 3 | 3.0 | 1 | 1 | 4 | 0 | 0 | 12 | 12.0 |
| Georgia | 11/29/2020 | * | 42:12 | 5-16 | .313 | 1-5 | .200 | 1-1 | 1.000 | 0 | 0 | 0 | 1.5 | 4 | 3 | 4 | 0 | 1 | 12 | 12.0 |
| Tulane | 12/03/2020 | * | 38:01 | 4-11 | .364 | 2-6 | .333 | 0-0 | .000 | 0 | 4 | 4 | 2.3 | 2 | 4 | 4 | 1 | 1 | 10 | 11.3 |
| Boston College | 12/09/2020 | * | 27:36 | 6-12 | .500 | 1-4 | .250 | 0-2 | .000 | 1 | 3 | 4 | 2.8 | 3 | 5 | 4 | 0 | 0 | 13 | 11.8 |
| at Notre Dame | 12/13/2020 | * | 18:35 | 3-4 | .750 | 1-1 | 1.000 | 4-5 | .800 | 0 | 1 | 1 | 2.4 | 2 | 0 | 0 | 0 | 0 | 11 | 11.6 |
| at Notre Dame | 01/03/2021 | * | 23:17 | 4-9 | .444 | 1-5 | .200 | 0-0 | .000 | 0 | 0 | 0 | 2.0 | 2 | 3 | 4 | 0 | 0 | 9 | 11.2 |
| at Clemson | 01/07/2021 | | 09:51 | 0-2 | .000 | 0-0 | .000 | 1-2 | .500 | 0 | 0 | 0 | 1.7 | 2 | 0 | 1 | 0 | 0 | 1 | 9.7 |
| Virginia Tech | 01/10/2021 | | 07:41 | 1-4 | .250 | 0-2 | .000 | 0-0 | .000 | 0 | 2 | 2 | 1.8 | 1 | 0 | 1 | 0 | 0 | 2 | 8.8 |
| at Wake Forest | 01/21/2021 | | 26:20 | 4-11 | .364 | 1-4 | .250 | 0-0 | .000 | 0 | 1 | 1 | 1.7 | 2 | 1 | 0 | 0 | 0 | 9 | 8.8 |
| Florida St. | 01/24/2021 | | 37:50 | 2-9 | .222 | 2-6 | .333 | 6-6 | 1.000 | 0 | 2 | 2 | 1.7 | 2 | 3 | 3 | 0 | 0 | 12 | 9.1 |
| at Miami (FL) | 01/28/2021 | * | 32:58 | 3-10 | .300 | 1-3 | .333 | 1-2 | .500 | 0 | 4 | 4 | 1.9 | 2 | 2 | 1 | 0 | 0 | 8 | 9.0 |
| Syracuse | 02/02/2021 | * | 28:41 | 2-5 | .400 | 1-4 | .250 | 0-0 | .000 | 0 | 0 | 0 | 1.8 | 1 | 3 | 2 | 0 | 0 | 5 | 8.7 |
| Clemson | 02/04/2021 | * | 36:56 | 6-10 | .600 | 3-3 | 1.000 | 2-4 | .500 | 0 | 1 | 1 | 1.7 | 3 | 7 | 1 | 0 | 2 | 17 | 9.3 |
| Wake Forest | 02/07/2021 | * | 22:44 | 1-3 | .333 | 1-2 | .500 | 0-0 | .000 | 0 | 0 | 0 | 1.6 | 1 | 2 | 0 | 0 | 0 | 3 | 8.9 |
| at Louisville | 02/11/2021 | * | 32:00 | 4-6 | .667 | 4-5 | .800 | 2-6 | .333 | 0 | 0 | 0 | 1.5 | 3 | 6 | 4 | 0 | 0 | 14 | 9.2 |
| Miami (FL) | 02/16/2021 | * | 32:36 | 2-8 | .250 | 2-6 | .333 | 0-0 | .000 | 0 | 1 | 1 | 1.4 | 2 | 0 | 1 | 0 | 0 | 6 | 9.0 |
| at Florida St. | 02/18/2021 | * | 32:17 | 2-3 | .667 | 2-2 | 1.000 | 3-4 | .750 | 0 | 0 | 0 | 1.4 | 2 | 3 | 2 | 0 | 0 | 9 | 9.0 |
| at Boston College | 02/21/2021 | * | 38:50 | 1-10 | .100 | 1-7 | .143 | 4-6 | .667 | 1 | 2 | 3 | 1.4 | 0 | 1 | 4 | 0 | 0 | 7 | 8.9 |
| at North Carolina | 02/25/2021 | * | 32:22 | 5-11 | .455 | 3-6 | .500 | 0-1 | .000 | 1 | 1 | 2 | 1.5 | 2 | 4 | 3 | 0 | 0 | 13 | 9.1 |
| Pittsburgh | 02/28/2021 | * | 38:33 | 3-10 | .300 | 2-7 | .286 | 0-2 | .000 | 0 | 0 | 0 | 1.4 | 0 | 2 | 0 | 0 | 1 | 8 | 9.1 |
| vs Clemson | 03/05/2021 | * | 40:00 | 5-9 | .556 | 4-8 | .500 | 0-0 | .000 | 0 | 0 | 0 | 1.3 | 2 | 0 | 3 | 0 | 0 | 14 | 9.3 |
| vs NC State | 03/06/2021 | * | 40:00 | 2-8 | .250 | 1-5 | .200 | 1-2 | .500 | 1 | 0 | 1 | 1.3 | 1 | 0 | 0 | 0 | 0 | 6 | 9.1 |
| vs SFA | 03/21/2021 | * | 37:10 | 2-6 | .333 | 1-4 | .250 | 0-0 | .000 | 1 | 2 | 3 | 1.4 | 1 | 1 | 2 | 0 | 0 | 5 | 9.0 |
| vs West Virginia | 03/23/2021 | * | 22:50 | 1-2 | .500 | 1-1 | 1.000 | 2-2 | 1.000 | 0 | 1 | 1 | 1.4 | 0 | 1 | 2 | 0 | 0 | 5 | 8.8 |
| vs South Carolina | 03/28/2021 | * | 39:10 | 3-5 | .600 | 2-4 | .500 | 1-2 | .500 | 0 | 1 | 1 | 1.4 | 0 | 2 | 0 | 0 | 1 | 9 | 8.8 |
| Totals | | | 21 | 769:40 | .381 | 39-106 | .368 | 31-51 | .608 | 5 | 29 | 34 | 1.4 | 41 | 54 | 50 | 1 | 6 | 220 | 8.8 |

Player Averages

| Games Played | Minutes/game | Points/game | FG Pct | 3FG Pct | FT Pct | Rebounds/game | Assists/game | Turnovers/game | Assist/Turnover ratio | Steals/game | Blocks/game |
|--------------|--------------|-------------|--------|---------|--------|---------------|--------------|----------------|-----------------------|-------------|-------------|
| 25 | 30.8 | 8.8 | 38.1 | 36.8 | 60.8 | 1.4 | 2.2 | 2.0 | 1.1 | 0.2 | 0.0 |



SARAH BATES

#3

Redshirt-Senior • 5'9" • Guard • Fresno, Calif. • Kansas State

THE BATES FILE

KEY SEASON AVERAGES (2020-21)

Points **6.9** Rebounds **1.9** Assists **1.2**

CAREER & SEASON HIGHS

Points

Season: 12, 2x, last at Notre Dame (12/13/20)

Career: 25, 2x, last at UC Davis (1/27/18) *

Field Goals

Season: 4, 2x, last at Notre Dame (12/13/20)

Career: 9 at UC Davis (1/27/18) *

Field Goals Attempted

Season: 11 at Notre Dame (12/13/20)

Career: 17 at UC Davis (1/27/18) *

3- Point Field Goals

Season: 4, 2x, last at Notre Dame (12/13/20)

Career: 7 at UC Davis (1/27/18) *

3- Point Field Goals Attempted

Season: 11 at Notre Dame (12/13/20)

Career: 12 at UC Davis (1/27/18) *

Free Throws

Season: 1, 2x, last vs. Tulane (12/3/20)

Career: 12 at Northern Arizona (11/10/17) *

Free Throws Attempted

Season: 1, 2x, last vs. Tulane (12/3/20)

Career: 16 at Northern Arizona (11/10/17) *

Rebounds

Season: 6 vs. Georgia (11/29/20)

Career: 7 vs. San Diego State (12/22/17) *

Assists

Season: 4 at Notre Dame (12/13/20)

Career: 6 vs. Hawai'i (2/3/18) *

Steals

Season: 1, 4x, last at Wake Forest (1/21/21)

Career: 3 vs. CSUN (1/31/18) *

Blocks

Season: 1 at Clemson (1/7/21)

Career: 1, 3x, last at Hawai'i (3/1/18) *

Turnovers

Season: 1, 3x, last vs. Florida State (1/24/21)

Career: 5, 2x, last at Cal Poly (2/21/18) *

Minutes

Season: 37 at Notre Dame (12/13/20)

Career: 40, 2x, last at Cal Poly (2/21/18) *

Miscellaneous

| | | |
|--------------------------|--------|-------|
| | Career | 19-20 |
| Double-Doubles: | - | - |
| Double Figure Points: | 2 | 2 |
| Double Figure Rebounds: | - | - |
| Led Team In Points/Rebs: | - | - |
| 20+ Points: | - | - |

* Career-high set at UC Santa Barbara

2020-21 GAME-BY-GAME

#3 BATES, Sarah

| Opponent | Date | GS | MIN | Total | | 3-Pointers | | Free throws | | Rebounds | | | | PF | A | T/O | BLK | STL | PTS | AVG | |
|----------------|------------|----|-----------|---------------|--------------|-------------|--------------|-------------|------------|--------------|----------|-----------|-----------|------------|-----------|-----------|----------|----------|----------|-----------|------------|
| | | | | FG-FGA | PCT | 3FG-3FGA | PCT | FT-FTA | PCT | OFF | DEF | TOT | AVG | | | | | | | | |
| Georgia St. | 11/25/2020 | * | 26:34 | 4-6 | .667 | 4-6 | .667 | 0-0 | .000 | 0 | 1 | 1 | 1.0 | 1 | 0 | 1 | 0 | 0 | 12 | 12.0 | |
| Georgia | 11/29/2020 | * | 30:10 | 3-7 | .429 | 2-6 | .333 | 1-1 | 1.000 | 0 | 6 | 6 | 3.5 | 2 | 2 | 1 | 0 | 0 | 9 | 10.5 | |
| Tulane | 12/03/2020 | * | 35:53 | 1-7 | .143 | 1-6 | .167 | 1-1 | 1.000 | 0 | 2 | 2 | 3.0 | 0 | 0 | 0 | 0 | 1 | 4 | 8.3 | |
| Boston College | 12/09/2020 | * | 36:13 | 3-9 | .333 | 3-9 | .333 | 0-0 | .000 | 0 | 5 | 5 | 3.5 | 1 | 1 | 0 | 0 | 0 | 9 | 8.5 | |
| at Notre Dame | 12/13/2020 | * | 37:18 | 4-11 | .364 | 4-11 | .364 | 0-0 | .000 | 0 | 0 | 0 | 2.8 | 2 | 4 | 0 | 0 | 1 | 12 | 9.2 | |
| NC State | 12/31/2020 | * | 31:11 | 1-5 | .200 | 1-5 | .200 | 0-0 | .000 | 0 | 2 | 2 | 2.7 | 1 | 1 | 0 | 0 | 0 | 3 | 8.2 | |
| at Notre Dame | 01/03/2021 | * | 23:41 | 1-6 | .167 | 1-6 | .167 | 0-0 | .000 | 0 | 2 | 2 | 2.6 | 2 | 1 | 0 | 0 | 0 | 3 | 7.4 | |
| at Clemson | 01/07/2021 | * | 34:48 | 3-10 | .300 | 3-9 | .333 | 0-0 | .000 | 0 | 0 | 0 | 2.3 | 0 | 2 | 0 | 1 | 1 | 9 | 7.6 | |
| Virginia Tech | 01/10/2021 | * | 32:42 | 2-6 | .333 | 2-5 | .400 | 0-0 | .000 | 0 | 0 | 0 | 2.0 | 1 | 1 | 0 | 0 | 0 | 6 | 7.4 | |
| at Wake Forest | 01/21/2021 | * | 26:23 | 2-4 | .500 | 2-4 | .500 | 0-0 | .000 | 0 | 1 | 1 | 1.9 | 2 | 1 | 0 | 0 | 1 | 6 | 7.3 | |
| Florida St. | 01/24/2021 | * | 10:09 | 1-2 | .500 | 1-2 | .500 | 0-0 | .000 | 0 | 2 | 2 | 1.9 | 0 | 0 | 1 | 0 | 0 | 3 | 6.9 | |
| Totals | | | 11 | 325:02 | 25-73 | .342 | 24-69 | .348 | 2-2 | 1.000 | 0 | 21 | 21 | 1.9 | 12 | 13 | 3 | 1 | 4 | 76 | 6.9 |

Player Averages

| Games Played | Minutes/ game | Points/ game | FG Pct | 3FG Pct | FT Pct | Rebounds/ game | Assists/ game | Turnovers/ game | Assist/Turnover ratio | Steals/ game | Blocks/ game |
|--------------|---------------|--------------|--------|---------|--------|----------------|---------------|-----------------|-----------------------|--------------|--------------|
| 11 | 29.5 | 6.9 | 34.2 | 34.8 | 100.0 | 1.9 | 1.2 | 0.3 | 4.3 | 0.4 | 0.1 |



ELIZABETE BULANE

#10

Freshman • 5'7" • Guard • Adazi, Latvia • Riga Commerical School

THE BULANE FILE

KEY SEASON AVERAGES

| | | |
|------------|------------|------------|
| Points | Rebounds | Steals |
| 0.0 | 0.0 | 0.0 |

CAREER & SEASON HIGHS

Points

Career:

Field Goals

Career:

Field Goals Attempted

Career:

3- Point Field Goals

Career:

3- Point Field Goals Attempted

Career:

Free Throws

Career:

Free Throws Attempted

Career:

Rebounds

Career:

Assists

Career:

Steals

Career:

Blocks

Career:

Turnovers

Career:

Minutes

Career:

Miscellaneous

| | Career | 21-22 |
|--------------------------|--------|-------|
| Double-Doubles: | - | - |
| Double Figure Points: | - | - |
| Double Figure Rebounds: | - | - |
| Led Team In Points/Rebs: | - | - |
| 20+ Points: | - | - |

2021-22 GAME-BY-GAME



AIXA WONE ARANAZ

#11

Junior • 6'3" • Forward • Pamplona, Spain • Ohio State

THE WONE ARANAZ FILE

KEY SEASON AVERAGES (2020-21)

Points **2.5** Rebounds **2.6** Assists **1.6**

CAREER & SEASON HIGHS

Points

Season: 5, 2x, last at Notre Dame (12/13/20)

Career: 12 vs. Ohio (11/17/19)*

Field Goals

Season: 2, 2x, last at Notre Dame (1/3/21)

Career: 5 vs. Ohio (11/17/19)*

Field Goals Attempted

Season: 6 vs. Georgia (11/29/20)

Career: 8 vs. Ohio (11/17/19)*

3- Point Field Goals

Season:

Career: 1, 2x, last at Sacramento St. (12/17/19)*

3- Point Field Goals Attempted

Season: 2 vs. Georgia (11/29/20)

Career: 2, 4x, last vs. Georgia (11/29/20)

Free Throws

Season: 3 vs. Georgia (11/29/20)

Career: 3 vs. Georgia (11/29/20)

Free Throws Attempted

Season: 4 vs. Georgia (11/29/20)

Career: 4, 2x, last vs. Georgia (11/29/20)

Rebounds

Season: 5, 2x, last vs. Georgia (11/29/20)

Career: 6 at Sacramento St. (12/17/19)*

Assists

Season: 2, 5x, last vs. NC State (12/31/20)

Career: 3, 2x, last at Sacramento St. (12/17/19)*

Steals

Season: 1, 2x, last at Notre Dame (12/13/20)

Career: 2 vs. Valparaiso (11/10/19)*

Blocks

Season: 1 vs. NC State (12/31/20)

Career: 1, 2x, last vs. NC State (12/31/20)*

Turnovers

Season: 1, 4x, last at Notre Dame (12/13/20)

Career: 4 at Sacramento St. (12/17/19)*

Minutes

Season: 26, 2x, last vs. Boston College (12/9/20)

Career: 28 at Sacramento St. (12/17/19)*

Miscellaneous

| | Career | 20-21 |
|--------------------------|--------|-------|
| Double-Doubles: | - | - |
| Double Figure Points: | 1 | - |
| Double Figure Rebounds: | - | - |
| Led Team In Points/Rebs: | - | - |
| 20+ Points: | - | - |

*Career high at Ohio State

2020-21 GAME-BY-GAME

#11 WONE ARANAZ, Aixa

| Opponent | Date | GS | MIN | Total | | 3-Pointers | | Free throws | | Rebounds | | | | PF | A | T/O | BLK | STL | PTS | AVG | |
|----------------|------------|----|----------|---------------|-------------|-------------|------------|-------------|------------|-------------|----------|-----------|-----------|------------|-----------|-----------|----------|----------|----------|-----------|------------|
| | | | | FG-FGA | PCT | 3FG-3FGA | PCT | FT-FTA | PCT | OFF | DEF | TOT | AVG | | | | | | | | |
| Georgia St. | 11/25/2020 | | 17:51 | 1-5 | .200 | 0-0 | .000 | 0-0 | .000 | 2 | 3 | 5 | 5.0 | 3 | 2 | 1 | 0 | 0 | 2 | 2.0 | |
| Georgia | 11/29/2020 | | 26:10 | 1-6 | .167 | 0-2 | .000 | 3-4 | .750 | 0 | 5 | 5 | 5.0 | 2 | 2 | 1 | 0 | 0 | 5 | 3.5 | |
| Tulane | 12/03/2020 | | 19:47 | 1-2 | .500 | 0-0 | .000 | 0-0 | .000 | 2 | 2 | 4 | 4.7 | 2 | 1 | 0 | 0 | 0 | 2 | 3.0 | |
| Boston College | 12/09/2020 | * | 26:14 | 1-4 | .250 | 0-0 | .000 | 0-0 | .000 | 2 | 0 | 2 | 4.0 | 1 | 2 | 1 | 0 | 1 | 2 | 2.8 | |
| at Notre Dame | 12/13/2020 | * | 22:49 | 2-4 | .500 | 0-0 | .000 | 1-1 | 1.000 | 0 | 1 | 1 | 3.4 | 0 | 2 | 1 | 0 | 1 | 5 | 3.2 | |
| NC State | 12/31/2020 | * | 15:19 | 0-2 | .000 | 0-0 | .000 | 0-0 | .000 | 0 | 0 | 0 | 2.8 | 3 | 2 | 0 | 1 | 0 | 0 | 2.7 | |
| at Notre Dame | 01/03/2021 | | 13:43 | 2-2 | 1.000 | 0-0 | .000 | 0-0 | .000 | 3 | 1 | 4 | 3.0 | 0 | 1 | 0 | 0 | 0 | 4 | 2.9 | |
| at Clemson | 01/07/2021 | * | 08:05 | 0-2 | .000 | 0-0 | .000 | 0-0 | .000 | 0 | 0 | 0 | 2.6 | 1 | 1 | 0 | 0 | 0 | 0 | 2.5 | |
| Totals | | | 4 | 149:58 | 8-27 | .296 | 0-2 | .000 | 4-5 | .800 | 9 | 12 | 21 | 2.6 | 12 | 13 | 4 | 1 | 2 | 20 | 2.5 |

Player Averages

| Games Played | Minutes/game | Points/game | FG Pct | 3FG Pct | FT Pct | Rebounds/game | Assists/game | Turnovers/game | Assist/Turnover ratio | Steals/game | Blocks/game |
|--------------|--------------|-------------|--------|---------|--------|---------------|--------------|----------------|-----------------------|-------------|-------------|
| 8 | 18.7 | 2.5 | 29.6 | 0.0 | 80.0 | 2.6 | 1.6 | 0.5 | 3.3 | 0.3 | 0.1 |



LORELA CUBAJ

#13

5th Year • 6'4" • Forward • Terni, Italy • Istituto Paritario G. Parini

THE CUBAJ FILE

KEY SEASON AVERAGES (2020-21)

Points **12.5** Rebounds **11.5** Assists **2.8**

CAREER & SEASON HIGHS

Points

Season: 21, 2x, last vs. West Virginia (3/23/21)

Career: 21, 3x, last vs. West Virginia (3/23/21)

Field Goals

Season: 10 vs. West Virginia (3/23/21)

Career: 10 vs. West Virginia (3/23/21)

Field Goals Attempted

Season: 20 vs. Georgia (11/29/20)

Career: 20 vs. Georgia (11/29/20)

3- Point Field Goals

Season: 2 vs. NC State (12/31/20)

Career: 2, 2x, last vs. NC State (12/31/20)

3- Point Field Goals Attempted

Season: 4 vs. NC State (12/31/20)

Career: 4, 3x, last vs. NC State (12/31/20)

Free Throws

Season: 6 vs. Boston College (12/9/20)

Career: 6 vs. Boston College (12/9/20)

Free Throws Attempted

Season: 11 at Clemson (1/7/21)

Career: 11, 2x, at at Clemson (1/7/21)

Rebounds

Season: 20 at Clemson (1/7/21)

Career: 20 at Clemson (1/7/21)

Assists

Season: 6 vs. Florida State (1/24/21)

Career: 7, 2x, last vs. Seton Hall (11/28/19)

Steals

Season: 4 vs. Georgia (11/29/20)

Career: 5, twice

Blocks

Season: 5 at Clemson (1/7/21)

Career: 5 at Clemson (1/7/21)

Turnovers

Season: 5, 3x, last vs. South Carolina (3/28/21)

Career: 7 vs. Houston (11/5/19)

Minutes

Season: 40 vs. Stephen F. Austin (3/21/21)

Career: 50 at Houston (11/9/18)

Miscellaneous

| | | |
|--------------------------|--------|-------|
| | Career | 20-21 |
| Double-Doubles: | 23 | 14 |
| Double Figure Points: | 44 | 19 |
| Double Figure Rebounds: | 31 | 17 |
| Led Team In Points/Rebs: | 12/53 | 7/22 |
| 20+ Points: | 5 | 4 |

2020-21 GAME-BY-GAME

#13 CUBAJ, Lorela

| Opponent | Date | GS | MIN | Total | | 3-Pointers | | Free throws | | Rebounds | | | | PF | A | T/O | BLK | STL | PTS | AVG | |
|-------------------|------------|----|-----------|---------------|----------------|-------------|-------------|-------------|--------------|-------------|-----------|------------|------------|-------------|-----------|-----------|-----------|-----------|-----------|------------|-------------|
| | | | | FG-FGA | PCT | 3FG-3FGA | PCT | FT-FTA | PCT | OFF | DEF | TOT | AVG | | | | | | | | |
| Georgia St. | 11/25/2020 | * | 30:27 | 4-10 | .400 | 0-2 | .000 | 0-1 | .000 | 1 | 13 | 14 | 14.0 | 2 | 4 | 2 | 4 | 2 | 8 | 8.0 | |
| Georgia | 11/29/2020 | * | 37:20 | 8-20 | .400 | 1-3 | .333 | 3-5 | .600 | 4 | 9 | 13 | 13.5 | 3 | 2 | 3 | 1 | 4 | 20 | 14.0 | |
| Tulane | 12/03/2020 | * | 35:22 | 8-18 | .444 | 0-0 | .000 | 2-2 | 1.000 | 4 | 12 | 16 | 14.3 | 3 | 1 | 2 | 1 | 1 | 18 | 15.3 | |
| Boston College | 12/09/2020 | * | 30:57 | 5-11 | .455 | 0-1 | .000 | 6-8 | .750 | 0 | 7 | 7 | 12.5 | 0 | 2 | 1 | 3 | 3 | 16 | 15.5 | |
| at Notre Dame | 12/13/2020 | * | 29:57 | 8-13 | .615 | 0-0 | .000 | 0-2 | .000 | 5 | 8 | 13 | 12.6 | 4 | 3 | 4 | 3 | 0 | 16 | 15.6 | |
| NC State | 12/31/2020 | * | 25:49 | 5-12 | .417 | 2-4 | .500 | 3-4 | .750 | 0 | 3 | 3 | 11.0 | 4 | 2 | 2 | 1 | 1 | 15 | 15.5 | |
| at Notre Dame | 01/03/2021 | * | 31:03 | 2-7 | .286 | 0-1 | .000 | 2-4 | .500 | 4 | 4 | 8 | 10.6 | 3 | 3 | 3 | 0 | 2 | 6 | 14.1 | |
| at Clemson | 01/07/2021 | * | 37:28 | 5-10 | .500 | 0-3 | .000 | 4-11 | .364 | 6 | 14 | 20 | 11.8 | 2 | 2 | 1 | 5 | 2 | 14 | 14.1 | |
| Virginia Tech | 01/10/2021 | * | 32:35 | 3-12 | .250 | 0-0 | .000 | 4-4 | 1.000 | 2 | 11 | 13 | 11.9 | 1 | 2 | 2 | 0 | 2 | 10 | 13.7 | |
| at Wake Forest | 01/21/2021 | * | 33:37 | 5-11 | .455 | 0-0 | .000 | 1-2 | .500 | 4 | 11 | 15 | 12.2 | 2 | 5 | 1 | 0 | 1 | 11 | 13.4 | |
| Florida St. | 01/24/2021 | * | 34:11 | 2-8 | .250 | 0-2 | .000 | 1-1 | 1.000 | 2 | 7 | 9 | 11.9 | 0 | 6 | 5 | 2 | 1 | 5 | 12.6 | |
| at Miami (FL) | 01/28/2021 | * | 33:50 | 6-11 | .545 | 0-2 | .000 | 2-4 | .500 | 3 | 11 | 14 | 12.1 | 3 | 2 | 2 | 0 | 2 | 14 | 12.8 | |
| Syracuse | 02/02/2021 | * | 34:10 | 9-14 | .643 | 1-1 | 1.000 | 2-4 | .500 | 6 | 3 | 9 | 11.8 | 4 | 2 | 2 | 1 | 2 | 21 | 13.4 | |
| Clemson | 02/04/2021 | * | 37:49 | 4-11 | .364 | 0-1 | .000 | 4-6 | .667 | 2 | 10 | 12 | 11.9 | 1 | 5 | 0 | 1 | 0 | 12 | 13.3 | |
| Wake Forest | 02/07/2021 | * | 38:34 | 5-14 | .357 | 0-0 | .000 | 1-2 | .500 | 2 | 12 | 14 | 12.0 | 3 | 4 | 2 | 2 | 2 | 11 | 13.1 | |
| at Louisville | 02/11/2021 | * | 17:29 | 2-6 | .333 | 0-0 | .000 | 0-0 | .000 | 2 | 2 | 4 | 11.5 | 1 | 0 | 1 | 0 | 0 | 4 | 12.6 | |
| Miami (FL) | 02/16/2021 | * | 23:37 | 5-11 | .455 | 0-2 | .000 | 4-4 | 1.000 | 2 | 5 | 7 | 11.2 | 3 | 3 | 2 | 1 | 0 | 14 | 12.6 | |
| at Florida St. | 02/18/2021 | * | 30:48 | 7-9 | .778 | 0-0 | .000 | 0-1 | .000 | 1 | 9 | 10 | 11.2 | 4 | 3 | 1 | 0 | 2 | 14 | 12.7 | |
| at Boston College | 02/21/2021 | * | 39:38 | 3-8 | .375 | 0-0 | .000 | 1-2 | .500 | 1 | 14 | 15 | 11.4 | 2 | 4 | 4 | 4 | 2 | 7 | 12.4 | |
| at North Carolina | 02/25/2021 | * | 29:33 | 4-10 | .400 | 0-0 | .000 | 0-0 | .000 | 1 | 8 | 9 | 11.3 | 4 | 4 | 1 | 0 | 1 | 8 | 12.2 | |
| Pittsburgh | 02/28/2021 | * | 31:35 | 1-9 | .111 | 0-1 | .000 | 0-0 | .000 | 5 | 12 | 17 | 11.5 | 5 | 3 | 1 | 0 | 1 | 2 | 11.7 | |
| vs Clemson | 03/05/2021 | * | 39:19 | 5-9 | .556 | 1-1 | 1.000 | 1-3 | .333 | 4 | 14 | 18 | 11.8 | 4 | 4 | 5 | 0 | 0 | 12 | 11.7 | |
| vs NC State | 03/06/2021 | * | 39:15 | 8-18 | .444 | 0-3 | .000 | 1-2 | .500 | 1 | 10 | 11 | 11.8 | 2 | 2 | 2 | 0 | 1 | 17 | 12.0 | |
| vs SFA | 03/21/2021 | * | 40:58 | 6-18 | .333 | 0-2 | .000 | 2-2 | 1.000 | 2 | 8 | 10 | 11.7 | 4 | 4 | 2 | 4 | 1 | 14 | 12.0 | |
| vs West Virginia | 03/23/2021 | * | 38:58 | 10-17 | .588 | 0-1 | .000 | 1-2 | .500 | 4 | 8 | 12 | 11.7 | 3 | 1 | 3 | 1 | 0 | 21 | 12.4 | |
| vs South Carolina | 03/28/2021 | * | 32:02 | 7-15 | .467 | 1-1 | 1.000 | 0-0 | .000 | 2 | 5 | 7 | 11.5 | 3 | 1 | 5 | 0 | 1 | 15 | 12.5 | |
| Totals | | | 26 | 866:21 | 137-312 | .439 | 6-31 | .194 | 45-76 | .592 | 70 | 230 | 300 | 11.5 | 70 | 74 | 59 | 34 | 34 | 325 | 12.5 |

Player Averages

| Games Played | Minutes/game | Points/game | FG Pct | 3FG Pct | FT Pct | Rebounds/game | Assists/game | Turnovers/game | Assist/Turnover ratio | Steals/game | Blocks/game |
|--------------|--------------|-------------|--------|---------|--------|---------------|--------------|----------------|-----------------------|-------------|-------------|
| 26 | 33.3 | 12.5 | 43.9 | 19.4 | 59.2 | 11.5 | 2.8 | 2.3 | | 1.3 | 1.3 |



ANISA CLARK

#14

Sophomore • 5'7" • Guard • McDonough, Ga. • Union Grove

THE CLARK FILE

KEY SEASON AVERAGES (2020-21)

Points **1.0** Rebounds **0.0** Assists **0.0**

CAREER & SEASON HIGHS

Points

Career: 3 at Wake Forest (1/21/21)

Field Goals

Career: 1 at Wake Forest (1/21/21)

Field Goals Attempted

Career: 1 at Wake Forest (1/21/21)

3- Point Field Goals

Career: 1 at Wake Forest (1/21/21)

3- Point Field Goals Attempted

Career: 1 at Wake Forest (1/21/21)

Free Throws

Career:

Free Throws Attempted

Career:

Rebounds

Career:

Assists

Career:

Steals

Career:

Blocks

Career:

Turnovers

Career:

Minutes

Career: 0.9 vs. Georgia State (11/25/20)

Miscellaneous

| | | |
|--------------------------|--------|-------|
| | Career | 20-21 |
| Double-Doubles: | - | - |
| Double Figure Points: | - | - |
| Double Figure Rebounds: | - | - |
| Led Team In Points/Rebs: | - | - |
| 20+ Points: | - | - |

2020-21 GAME-BY-GAME

#14 CLARK, Anisa

| Opponent | Date | GS | MIN | Total | | 3-Pointers | | Free throws | | Rebounds | | | | PF | A | T/O | BLK | STL | PTS | AVG |
|------------------|------------|----------|--------------|------------|--------------|------------|--------------|-------------|-------------|----------|----------|----------|------------|----------|----------|----------|----------|----------|----------|------------|
| | | | | FG-FGA | PCT | 3FG-3FGA | PCT | FT-FTA | PCT | OFF | DEF | TOT | AVG | | | | | | | |
| Georgia St. | 11/25/2020 | | 00:54 | 0-0 | .000 | 0-0 | .000 | 0-0 | .000 | 0 | 0 | 0 | 0.0 | 0 | 0 | 0 | 0 | 0 | 0 | 0.0 |
| at Wake Forest | 01/21/2021 | | 01:50 | 1-1 | 1.000 | 1-1 | 1.000 | 0-0 | .000 | 0 | 0 | 0 | 0.0 | 1 | 0 | 0 | 0 | 0 | 3 | 1.5 |
| vs West Virginia | 03/23/2021 | | 00:54 | 0-0 | .000 | 0-0 | .000 | 0-0 | .000 | 0 | 0 | 0 | 0.0 | 0 | 0 | 0 | 0 | 0 | 0 | 1.0 |
| Totals | | 0 | 03:38 | 1-1 | 1.000 | 1-1 | 1.000 | 0-0 | .000 | 0 | 0 | 0 | 0.0 | 1 | 0 | 0 | 0 | 0 | 3 | 1.0 |

Player Averages

| Games Played | Minutes/ game | Points/ game | FG Pct | 3FG Pct | FT Pct | Rebounds/ game | Assists/ game | Turnovers/ game | Assist/Turnover ratio | Steals/ game | Blocks/ game |
|--------------|---------------|--------------|--------|---------|--------|----------------|---------------|-----------------|-----------------------|--------------|--------------|
| 3 | 1.2 | 1.0 | 100.0 | 100.0 | 0.0 | 0.0 | 0.0 | 0.0 | 0.0 | 0.0 | 0.0 |



AVYONCE CARTER

#15

Sophomore • 5'10" • Guard • Norcross, Ga. • Wesleyan

THE CARTER FILE

KEY SEASON AVERAGES (2020-21)

| | | |
|------------|------------|------------|
| Points | Rebounds | Assists |
| 1.9 | 1.1 | 0.1 |

CAREER & SEASON HIGHS

Points

Career: 7, 2x, last vs. NC State (12/31/20)

Field Goals

Career: 3 vs. NC State (12/31/20)

Field Goals Attempted

Career: 10 vs. NC State (12/31/20)

3- Point Field Goals

Career: 1, 2x, last vs. NC State (12/31/20)

3- Point Field Goals Attempted

Career: 6 vs. NC State (12/31/20)

Free Throws

Career: 4 vs. Georgia State (11/25/20)

Free Throws Attempted

Career: 6 vs. Georgia State (11/25/20)

Rebounds

Career: 4, 2x, last vs. NC State (12/31/20)

Assists

Career: 2 vs. Georgia State (11/25/20)

Steals

Career: 1, 4x, last vs. Miami (2/16/21)

Blocks

Career:

Turnovers

Career: 3, 2x, last vs. Boston College (12/9/20)

Minutes

Career: 14 vs. Georgia State (11/25/20)

Miscellaneous

| | | |
|--------------------------|--------|-------|
| | Career | 20-21 |
| Double-Doubles: | - | - |
| Double Figure Points: | - | - |
| Double Figure Rebounds: | - | - |
| Led Team In Points/Rebs: | - | - |
| 20+ Points: | - | - |

2020-21 GAME-BY-GAME

#15 CARTER, Avyonce

| Opponent | Date | GS | MIN | Total | | 3-Pointers | | Free throws | | Rebounds | | | | PF | A | T/O | BLK | STL | PTS | AVG |
|-------------------|------------|----------|---------------|-------------|-------------|-------------|-------------|-------------|-------------|----------|-----------|-----------|------------|-----------|----------|----------|----------|----------|-----------|------------|
| | | | | FG-FGA | PCT | 3FG-3FGA | PCT | FT-FTA | PCT | OFF | DEF | TOT | AVG | | | | | | | |
| Georgia St. | 11/25/2020 | | 13:58 | 0-3 | .000 | 0-3 | .000 | 4-6 | .667 | 0 | 4 | 4 | 4.0 | 1 | 2 | 3 | 0 | 1 | 4 | 4.0 |
| Boston College | 12/09/2020 | | 10:19 | 2-3 | .667 | 1-2 | .500 | 2-2 | 1.000 | 0 | 0 | 0 | 2.0 | 1 | 0 | 3 | 0 | 0 | 7 | 5.5 |
| at Notre Dame | 12/13/2020 | | 06:57 | 1-1 | 1.000 | 0-0 | .000 | 0-0 | .000 | 0 | 0 | 0 | 1.3 | 0 | 0 | 0 | 0 | 0 | 2 | 4.3 |
| NC State | 12/31/2020 | | 13:33 | 3-10 | .300 | 1-6 | .167 | 0-1 | .000 | 2 | 2 | 4 | 2.0 | 1 | 0 | 0 | 0 | 0 | 7 | 5.0 |
| Virginia Tech | 01/10/2021 | | 01:14 | 0-0 | .000 | 0-0 | .000 | 0-0 | .000 | 0 | 0 | 0 | 1.6 | 0 | 0 | 0 | 0 | 0 | 0 | 4.0 |
| at Wake Forest | 01/21/2021 | | 07:49 | 0-0 | .000 | 0-0 | .000 | 1-2 | .500 | 0 | 2 | 2 | 1.7 | 1 | 0 | 1 | 0 | 1 | 1 | 3.5 |
| at Miami (FL) | 01/28/2021 | | 05:14 | 0-0 | .000 | 0-0 | .000 | 0-0 | .000 | 0 | 0 | 0 | 1.4 | 2 | 0 | 0 | 0 | 0 | 0 | 3.0 |
| Clemson | 02/04/2021 | | 05:58 | 1-3 | .333 | 0-2 | .000 | 0-0 | .000 | 0 | 0 | 0 | 1.3 | 0 | 0 | 0 | 0 | 0 | 2 | 2.9 |
| Wake Forest | 02/07/2021 | | 08:23 | 1-3 | .333 | 0-1 | .000 | 0-0 | .000 | 0 | 0 | 0 | 1.1 | 0 | 0 | 0 | 0 | 1 | 2 | 2.8 |
| at Louisville | 02/11/2021 | | 04:14 | 0-3 | .000 | 0-0 | .000 | 0-0 | .000 | 1 | 1 | 2 | 1.2 | 1 | 0 | 0 | 0 | 0 | 0 | 2.5 |
| Miami (FL) | 02/16/2021 | | 04:10 | 1-3 | .333 | 0-2 | .000 | 0-0 | .000 | 1 | 0 | 1 | 1.2 | 2 | 0 | 0 | 0 | 1 | 2 | 2.5 |
| at Florida St. | 02/18/2021 | | 06:20 | 0-1 | .000 | 0-1 | .000 | 0-0 | .000 | 0 | 1 | 1 | 1.2 | 1 | 0 | 0 | 0 | 0 | 0 | 2.3 |
| at Boston College | 02/21/2021 | | 01:10 | 0-0 | .000 | 0-0 | .000 | 0-0 | .000 | 0 | 0 | 0 | 1.1 | 0 | 0 | 0 | 0 | 0 | 0 | 2.1 |
| at North Carolina | 02/25/2021 | | 10:36 | 0-2 | .000 | 0-2 | .000 | 2-2 | 1.000 | 1 | 1 | 2 | 1.1 | 1 | 0 | 2 | 0 | 0 | 2 | 2.1 |
| vs West Virginia | 03/23/2021 | | 01:02 | 0-1 | .000 | 0-1 | .000 | 0-0 | .000 | 0 | 0 | 0 | 1.1 | 0 | 0 | 0 | 0 | 0 | 0 | 1.9 |
| Totals | | 0 | 100:57 | 9-33 | .273 | 2-20 | .100 | 9-13 | .692 | 5 | 11 | 16 | 1.1 | 11 | 2 | 9 | 0 | 4 | 29 | 1.9 |

Player Averages

| Games Played | Minutes/ game | Points/ game | FG Pct | 3FG Pct | FT Pct | Rebounds/ game | Assists/ game | Turnovers/ game | Assist/Turnover ratio | Steals/ game | Blocks/ game |
|--------------|---------------|--------------|--------|---------|--------|----------------|---------------|-----------------|-----------------------|--------------|--------------|
| 15 | 6.7 | 1.9 | 27.3 | 10.0 | 69.2 | 1.1 | 0.1 | 0.6 | 0.2 | 0.3 | 0.0 |

**NEREA HERMOSA****#20**

Junior • 6'5" • Center • Vitoria, Spain • IES Joaquim Blume

THE HERMOSA FILE**KEY SEASON AVERAGES (2020-21)**

| | | |
|------------|------------|------------|
| Points | Rebounds | Assists |
| 8.1 | 5.0 | 0.8 |

CAREER & SEASON HIGHS**Points**

Season: 16 at Wake Forest (1/21/21)
 Career: 16, 2x, last at Wake Forest (1/21/21)

Field Goals

Season: 8 at Wake Forest (1/21/21)
 Career: 8, 2x, last at Wake Forest (1/21/21)

Field Goals Attempted

Season: 11 vs. Florida State (1/24/21)
 Career: 11 vs. Florida State (1/24/21)

3- Point Field Goals

Season:
 Career:

3- Point Field Goals Attempted

Season:
 Career:

Free Throws

Season: 4 at Notre Dame (1/3/21)
 Career: 5 vs. Grambling State (11/10/19)

Free Throws Attempted

Season: 4, 3x, last at Louisville (2/11/21)
 Career: 6, 3x, last vs. Pitt (3/5/20)

Rebounds

Season: 10 at Boston College (2/21/21)
 Career: 10 at Boston College (2/21/21)

Assists

Season: 3 at Florida State (2/18/21)
 Career: 4 vs. Georgia State (11/20/19)

Steals

Season: 3 vs. Syracuse (2/2/21)
 Career: 3, 2x, last vs. Syracuse (2/2/21)

Blocks

Season: 3, 3x, last vs. Pitt (2/28/21)
 Career: 4 vs. North Carolina (1/23/20)

Turnovers

Season: 3, 3x, last at Florida State (2/18/21)
 Career: 4, 2x, last vs. Rutgers (11/30/19)

Minutes

Season: 37 vs. Virginia Tech (1/10/21)
 Career: 40 vs. Rutgers (11/30/19)

Miscellaneous

| | | |
|--------------------------|--------|-------|
| | Career | 20-21 |
| Double-Doubles: | 1 | 1 |
| Double Figure Points: | 18 | 10 |
| Double Figure Rebounds: | 1 | 1 |
| Led Team In Points/Rebs: | 6/1 | 3/1 |
| 20+ Points: | - | - |

2020-21 GAME-BY-GAME**#20 HERMOSA , Nerea**

| Opponent | Date | GS | MIN | Total | | 3-Pointers | | Free throws | | Rebounds | | | | PF | A | T/O | BLK | STL | PTS | AVG | |
|-------------------|------------|----|-----------|---------------|---------------|-------------|------------|-------------|--------------|-------------|-----------|-----------|------------|------------|-----------|-----------|-----------|-----------|-----------|------------|------------|
| | | | | FG-FGA | PCT | 3FG-3FGA | PCT | FT-FTA | PCT | OFF | DEF | TOT | AVG | | | | | | | | |
| Georgia St. | 11/25/2020 | * | 23:29 | 3-8 | .375 | 0-0 | .000 | 0-2 | .000 | 1 | 4 | 5 | 5.0 | 4 | 2 | 2 | 1 | 0 | 6 | 6.0 | |
| Georgia | 11/29/2020 | * | 24:10 | 5-9 | .556 | 0-0 | .000 | 0-0 | .000 | 3 | 2 | 5 | 5.0 | 2 | 0 | 0 | 0 | 1 | 10 | 8.0 | |
| Tulane | 12/03/2020 | * | 16:24 | 2-7 | .286 | 0-0 | .000 | 0-0 | .000 | 2 | 1 | 3 | 4.3 | 1 | 0 | 1 | 1 | 0 | 4 | 6.7 | |
| Boston College | 12/09/2020 | | 08:17 | 0-2 | .000 | 0-0 | .000 | 2-2 | 1.000 | 1 | 0 | 1 | 3.5 | 1 | 0 | 1 | 0 | 0 | 2 | 5.5 | |
| at Notre Dame | 12/13/2020 | | 10:39 | 3-3 | 1.000 | 0-0 | .000 | 0-0 | .000 | 1 | 1 | 2 | 3.2 | 4 | 0 | 0 | 2 | 0 | 6 | 5.6 | |
| NC State | 12/31/2020 | | 28:47 | 4-5 | .800 | 0-0 | .000 | 2-4 | .500 | 4 | 2 | 6 | 3.7 | 5 | 1 | 2 | 2 | 1 | 10 | 6.3 | |
| at Notre Dame | 01/03/2021 | | 31:00 | 4-9 | .444 | 0-0 | .000 | 4-4 | 1.000 | 5 | 3 | 8 | 4.3 | 1 | 1 | 1 | 1 | 1 | 12 | 7.1 | |
| at Clemson | 01/07/2021 | | 22:35 | 1-4 | .250 | 0-0 | .000 | 1-2 | .500 | 3 | 2 | 5 | 4.4 | 1 | 2 | 1 | 1 | 1 | 3 | 6.6 | |
| Virginia Tech | 01/10/2021 | * | 37:20 | 3-6 | .500 | 0-0 | .000 | 1-2 | .500 | 7 | 1 | 8 | 4.8 | 3 | 0 | 3 | 2 | 1 | 7 | 6.7 | |
| at Wake Forest | 01/21/2021 | * | 24:26 | 8-8 | 1.000 | 0-0 | .000 | 0-0 | .000 | 0 | 3 | 3 | 4.6 | 2 | 2 | 2 | 2 | 0 | 16 | 7.6 | |
| Florida St. | 01/24/2021 | * | 31:21 | 4-11 | .364 | 0-0 | .000 | 1-2 | .500 | 5 | 3 | 8 | 4.9 | 2 | 0 | 2 | 1 | 0 | 9 | 7.7 | |
| at Miami (FL) | 01/28/2021 | * | 24:35 | 5-8 | .625 | 0-0 | .000 | 0-0 | .000 | 3 | 3 | 6 | 5.0 | 3 | 1 | 0 | 0 | 1 | 10 | 7.9 | |
| Syracuse | 02/02/2021 | * | 26:27 | 4-7 | .571 | 0-0 | .000 | 1-2 | .500 | 1 | 4 | 5 | 5.0 | 0 | 2 | 1 | 3 | 9 | 8.0 | | |
| Clemson | 02/04/2021 | * | 28:00 | 4-7 | .571 | 0-0 | .000 | 1-2 | .500 | 1 | 3 | 4 | 4.9 | 5 | 1 | 0 | 0 | 0 | 9 | 8.1 | |
| Wake Forest | 02/07/2021 | * | 17:24 | 2-4 | .500 | 0-0 | .000 | 0-0 | .000 | 1 | 1 | 2 | 4.7 | 0 | 1 | 1 | 1 | 0 | 4 | 7.8 | |
| at Louisville | 02/11/2021 | * | 31:22 | 5-8 | .625 | 0-0 | .000 | 3-4 | .750 | 4 | 2 | 6 | 4.8 | 1 | 1 | 1 | 0 | 0 | 13 | 8.1 | |
| Miami (FL) | 02/16/2021 | * | 34:49 | 7-9 | .778 | 0-0 | .000 | 1-2 | .500 | 3 | 4 | 7 | 4.9 | 0 | 0 | 3 | 2 | 1 | 15 | 8.5 | |
| at Florida St. | 02/18/2021 | * | 31:33 | 7-10 | .700 | 0-0 | .000 | 0-0 | .000 | 3 | 5 | 8 | 5.1 | 0 | 3 | 3 | 3 | 1 | 14 | 8.8 | |
| at Boston College | 02/21/2021 | * | 36:15 | 6-9 | .667 | 0-0 | .000 | 2-2 | 1.000 | 5 | 5 | 10 | 5.4 | 4 | 1 | 2 | 3 | 1 | 14 | 9.1 | |
| at North Carolina | 02/25/2021 | * | 21:30 | 4-6 | .667 | 0-0 | .000 | 0-0 | .000 | 2 | 1 | 3 | 5.3 | 2 | 0 | 0 | 0 | 0 | 8 | 9.1 | |
| Pittsburgh | 02/28/2021 | * | 34:58 | 6-9 | .667 | 0-0 | .000 | 0-0 | .000 | 0 | 3 | 3 | 5.1 | 4 | 1 | 1 | 3 | 1 | 12 | 9.2 | |
| vs Clemson | 03/05/2021 | * | 36:21 | 2-4 | .500 | 0-0 | .000 | 0-0 | .000 | 1 | 4 | 5 | 5.1 | 2 | 1 | 1 | 1 | 0 | 4 | 9.0 | |
| vs NC State | 03/06/2021 | * | 12:06 | 2-4 | .500 | 0-0 | .000 | 0-0 | .000 | 0 | 2 | 2 | 5.0 | 5 | 0 | 0 | 0 | 0 | 4 | 8.7 | |
| vs SFA | 03/21/2021 | * | 27:17 | 3-4 | .750 | 0-0 | .000 | 0-0 | .000 | 3 | 3 | 6 | 5.0 | 1 | 1 | 0 | 0 | 2 | 6 | 8.6 | |
| vs West Virginia | 03/23/2021 | * | 21:17 | 0-3 | .000 | 0-0 | .000 | 2-2 | 1.000 | 0 | 3 | 3 | 5.0 | 3 | 1 | 2 | 0 | 0 | 2 | 8.4 | |
| vs South Carolina | 03/28/2021 | * | 28:13 | 1-6 | .167 | 0-0 | .000 | 0-0 | .000 | 3 | 2 | 5 | 5.0 | 2 | 1 | 2 | 0 | 0 | 2 | 8.1 | |
| Totals | | | 21 | 670:35 | 95-170 | .559 | 0-0 | .000 | 21-32 | .656 | 62 | 67 | 129 | 5.0 | 58 | 21 | 33 | 27 | 15 | 211 | 8.1 |

Player Averages

| Games Played | Minutes/ game | Points/ game | FG Pct | 3FG Pct | FT Pct | Rebounds/ game | Assists/ game | Turnovers/ game | Assist/Turnover ratio | Steals/ game | Blocks/ game |
|--------------|---------------|--------------|--------|---------|--------|----------------|---------------|-----------------|-----------------------|--------------|--------------|
| 26 | 25.8 | 8.1 | 55.9 | 0.0 | 65.6 | 5.0 | 0.8 | 1.3 | 0.6 | 0.6 | 1.0 |



EYLIA LOVE

#24

Sophomore • 6'1" • Guard/Forward • Kansas City, Kansas • Olathe North

THE LOVE FILE

KEY SEASON AVERAGES (2020-21)

| | | |
|------------|------------|------------|
| Points | Rebounds | Steals |
| 4.5 | 3.2 | 0.7 |

CAREER & SEASON HIGHS

Points

Career: 14 vs. Syracuse (2/2/21)

Field Goals

Career: 5 at Clemson (1/7/21)

Field Goals Attempted

Career: 9, 2x, last at Louisville (2/11/21)

3-Point Field Goals

Career: 2 vs. Tulane (12/3/20)

3-Point Field Goals Attempted

Career: 2, 3x, last at Wake Forest (1/21/21)

Free Throws

Career: 6 vs. Syracuse (2/2/21)

Free Throws Attempted

Career: 7 vs. Syracuse (2/2/21)

Rebounds

Career: 9 vs. Miami (2/16/21)

Assists

Career: 2 vs. Wake Forest (2/7/21)

Steals

Career: 3, 2x, last at North Carolina (2/25/21)

Blocks

Career: 1 vs. Georgia State (11/25/20)

Turnovers

Career: 3, 2x, last at Notre Dame (12/13/20)

Minutes

Career: 34 at Notre Dame (12/13/20)

Miscellaneous

| | | |
|--------------------------|--------|-------|
| | Career | 20-21 |
| Double-Doubles: | - | - |
| Double Figure Points: | 5 | 5 |
| Double Figure Rebounds: | - | - |
| Led Team In Points/Rebs: | 0/1 | 0/1 |
| 20+ Points: | - | - |

2020-21 GAME-BY-GAME

#24 LOVE, Eylia

| Opponent | Date | GS | MIN | Total | | 3-Pointers | | Free throws | | Rebounds | | | | PF | A | T/O | BLK | STL | PTS | AVG |
|-------------------|------------|----------|---------------|---------------|-------------|-------------|-------------|--------------|-------------|-----------|-----------|-----------|------------|-----------|----------|-----------|----------|-----------|------------|------------|
| | | | | FG-FGA | PCT | 3FG-3FGA | PCT | FT-FTA | PCT | OFF | DEF | TOT | AVG | | | | | | | |
| Georgia St. | 11/25/2020 | | 20:26 | 1-5 | .200 | 0-0 | .000 | 2-4 | .500 | 3 | 5 | 8 | 8.0 | 1 | 0 | 3 | 1 | 0 | 4 | 4.0 |
| Georgia | 11/29/2020 | | 29:09 | 2-4 | .500 | 0-0 | .000 | 3-4 | .750 | 2 | 2 | 4 | 6.0 | 3 | 0 | 2 | 0 | 1 | 7 | 5.5 |
| Tulane | 12/03/2020 | | 20:54 | 3-5 | .600 | 2-2 | 1.000 | 2-2 | 1.000 | 1 | 3 | 4 | 5.3 | 4 | 0 | 2 | 0 | 1 | 10 | 7.0 |
| Boston College | 12/09/2020 | | 23:16 | 3-3 | 1.000 | 0-0 | .000 | 4-6 | .667 | 2 | 3 | 5 | 5.3 | 4 | 0 | 0 | 0 | 0 | 10 | 7.8 |
| at Notre Dame | 12/13/2020 | | 34:34 | 4-9 | .444 | 1-1 | 1.000 | 2-2 | 1.000 | 0 | 8 | 8 | 5.8 | 2 | 0 | 3 | 0 | 3 | 11 | 8.4 |
| NC State | 12/31/2020 | * | 27:11 | 0-6 | .000 | 0-2 | .000 | 0-0 | .000 | 1 | 2 | 3 | 5.3 | 3 | 0 | 1 | 0 | 0 | 0 | 7.0 |
| at Notre Dame | 01/03/2021 | * | 09:09 | 1-3 | .333 | 0-1 | .000 | 1-1 | 1.000 | 0 | 0 | 0 | 4.6 | 1 | 0 | 1 | 0 | 0 | 3 | 6.4 |
| at Clemson | 01/07/2021 | | 26:43 | 5-8 | .625 | 1-1 | 1.000 | 1-1 | 1.000 | 3 | 0 | 3 | 4.4 | 3 | 1 | 0 | 0 | 0 | 12 | 7.1 |
| Virginia Tech | 01/10/2021 | | 09:37 | 0-1 | .000 | 0-1 | .000 | 0-0 | .000 | 0 | 3 | 3 | 4.2 | 0 | 0 | 1 | 0 | 2 | 0 | 6.3 |
| at Wake Forest | 01/21/2021 | | 07:02 | 0-2 | .000 | 0-2 | .000 | 2-2 | 1.000 | 0 | 0 | 0 | 3.8 | 3 | 0 | 1 | 0 | 0 | 2 | 5.9 |
| Florida St. | 01/24/2021 | | 15:19 | 1-1 | 1.000 | 0-0 | .000 | 0-0 | .000 | 1 | 3 | 4 | 3.8 | 0 | 0 | 1 | 0 | 0 | 2 | 5.5 |
| at Miami (FL) | 01/28/2021 | | 13:57 | 4-5 | .800 | 0-0 | .000 | 0-0 | .000 | 2 | 2 | 4 | 3.8 | 4 | 0 | 0 | 0 | 0 | 8 | 5.8 |
| Syracuse | 02/02/2021 | | 28:36 | 4-8 | .500 | 0-1 | .000 | 6-7 | .857 | 0 | 5 | 5 | 3.9 | 2 | 1 | 1 | 0 | 1 | 14 | 6.4 |
| Clemson | 02/04/2021 | | 08:42 | 0-1 | .000 | 0-0 | .000 | 1-2 | .500 | 0 | 0 | 0 | 3.6 | 4 | 0 | 1 | 0 | 0 | 1 | 6.0 |
| Wake Forest | 02/07/2021 | | 27:15 | 2-4 | .500 | 0-0 | .000 | 0-0 | .000 | 0 | 3 | 3 | 3.6 | 1 | 2 | 2 | 0 | 1 | 4 | 5.9 |
| at Louisville | 02/11/2021 | | 19:03 | 3-9 | .333 | 0-1 | .000 | 0-1 | .000 | 1 | 2 | 3 | 3.6 | 1 | 1 | 1 | 0 | 0 | 6 | 5.9 |
| Miami (FL) | 02/16/2021 | | 26:35 | 3-7 | .429 | 0-0 | .000 | 0-0 | .000 | 6 | 3 | 9 | 3.9 | 3 | 1 | 2 | 0 | 2 | 6 | 5.9 |
| at Florida St. | 02/18/2021 | | 19:01 | 1-1 | 1.000 | 0-0 | .000 | 2-3 | .667 | 0 | 2 | 2 | 3.8 | 4 | 0 | 0 | 0 | 1 | 4 | 5.8 |
| at Boston College | 02/21/2021 | | 15:52 | 0-1 | .000 | 0-1 | .000 | 1-2 | .500 | 0 | 2 | 2 | 3.7 | 2 | 1 | 2 | 0 | 0 | 1 | 5.5 |
| at North Carolina | 02/25/2021 | | 24:17 | 1-5 | .200 | 0-1 | .000 | 0-0 | .000 | 0 | 3 | 3 | 3.7 | 3 | 0 | 2 | 0 | 3 | 2 | 5.4 |
| Pittsburgh | 02/28/2021 | | 13:27 | 0-1 | .000 | 0-0 | .000 | 0-0 | .000 | 1 | 1 | 2 | 3.6 | 0 | 1 | 0 | 0 | 0 | 0 | 5.1 |
| vs Clemson | 03/05/2021 | | 04:20 | 0-0 | .000 | 0-0 | .000 | 0-0 | .000 | 0 | 0 | 0 | 3.4 | 0 | 0 | 1 | 0 | 0 | 0 | 4.9 |
| vs NC State | 03/06/2021 | | 21:06 | 2-5 | .400 | 0-0 | .000 | 1-1 | 1.000 | 1 | 0 | 1 | 3.3 | 2 | 0 | 1 | 0 | 0 | 5 | 4.9 |
| vs SFA | 03/21/2021 | | 19:58 | 0-1 | .000 | 0-0 | .000 | 0-0 | .000 | 0 | 4 | 4 | 3.3 | 4 | 1 | 0 | 0 | 0 | 0 | 4.7 |
| vs West Virginia | 03/23/2021 | | 25:19 | 3-5 | .600 | 0-0 | .000 | 0-0 | .000 | 2 | 0 | 2 | 3.3 | 1 | 0 | 0 | 0 | 2 | 6 | 4.7 |
| vs South Carolina | 03/28/2021 | | 05:53 | 0-0 | .000 | 0-0 | .000 | 0-0 | .000 | 0 | 0 | 0 | 3.2 | 0 | 0 | 0 | 0 | 0 | 0 | 4.5 |
| Totals | | 2 | 496:42 | 43-100 | .430 | 4-14 | .286 | 28-38 | .737 | 26 | 56 | 82 | 3.2 | 55 | 9 | 28 | 1 | 17 | 118 | 4.5 |

Player Averages

| Games Played | Minutes/ game | Points/ game | FG Pct | 3FG Pct | FT Pct | Rebounds/ game | Assists/ game | Turnovers/ game | Assist/Turnover ratio | Steals/ game | Blocks/ game |
|--------------|---------------|--------------|--------|---------|--------|----------------|---------------|-----------------|-----------------------|--------------|--------------|
| 26 | 19.1 | 4.5 | 43.0 | 28.6 | 73.7 | 3.2 | 0.3 | 1.1 | 0.3 | 0.7 | 0.0 |



LOTTA-MAJ LAHTINEN

#31

Senior • 5'7" • Guard • Helsinki, Finland • Makelanrinne Sports

THE LAHTINEN FILE

KEY SEASON AVERAGES (2020-21)

Points **15.0** Rebounds **4.6** Assists **3.5**

CAREER & SEASON HIGHS

Points

Season: 30 vs. NC State (12/31/20)

Career: 30 vs. NC State (12/31/20)

Field Goals

Season: 11 vs. Boston College (12/9/20)

Career: 11 vs. Boston College (12/9/20)

Field Goals Attempted

Season: 23 vs. NC State (12/31/20)

Career: 23 vs. NC State (12/31/20)

3- Point Field Goals

Season: 5 vs. Boston College (12/9/20)

Career: 5 vs. Boston College (12/9/20)

3- Point Field Goals Attempted

Season: 9 vs. West Virginia (3/23/21)

Career: 9 vs. West Virginia (3/23/21)

Free Throws

Season: 7, 2x, last vs. Pitt (2/28/21)

Career: 7, 2x, last vs. Pitt (2/28/21)

Free Throws Attempted

Season: 10 vs. Pitt (2/28/21)

Career: 10 vs. Pitt (2/28/21)

Rebounds

Season: 11 vs. NC State (12/31/20)

Career: 12 at Clemson (3/1/20)

Assists

Season: 10 vs. Miami (2/16/21)

Career: 10 vs. Miami (2/16/21)

Steals

Season: 8 vs. Boston College (12/9/20)

Career: 8 vs. Boston College (12/9/20)

Blocks

Season: 1, 6x, last vs. West Virginia (3/23/21)

Career: 2 vs. Virginia (12/29/19)

Turnovers

Season: 6, 2x, last vs. Pitt (2/28/21)

Career: 8 at Houston (11/9/18)

Minutes

Season: 43, vs. Stephen F. Austin (3/21/21)

Career: 45 at Virginia Tech (2/13/20)

Miscellaneous

| | | |
|--------------------------|--------|-------|
| | Career | 20-21 |
| Double-Doubles: | 3 | 2 |
| Double Figure Points: | 35 | 18 |
| Double Figure Rebounds: | 3 | 2 |
| Led Team In Points/Rebs: | 22/5 | 15/2 |
| 20+ Points: | 6 | 6 |

2020-21 GAME-BY-GAME

#31 LAHTINEN, Lotta-Maj

| Opponent | Date | GS | MIN | Total | | 3-Pointers | | Free throws | | Rebounds | | | PF | A | T/O | BLK | STL | PTS | AVG | | |
|-------------------|------------|----|-----------|---------------|----------------|-------------|---------------|-------------|--------------|-------------|-----------|-----------|------------|------------|-----------|-----------|-----------|----------|-----------|------------|-------------|
| | | | | FG-FGA | PCT | 3FG-3FGA | PCT | FT-FTA | PCT | OFF | DEF | TOT | | | | | | | | AVG | |
| Georgia St. | 11/25/2020 | * | 35:11 | 6-11 | .545 | 0-3 | .000 | 2-3 | .667 | 3 | 7 | 10 | 10.0 | 1 | 3 | 2 | 0 | 4 | 14 | 14.0 | |
| Georgia | 11/29/2020 | * | 35:49 | 2-12 | .167 | 0-4 | .000 | 2-2 | 1.000 | 1 | 4 | 5 | 7.5 | 4 | 4 | 5 | 0 | 0 | 6 | 10.0 | |
| Tulane | 12/03/2020 | * | 31:36 | 3-11 | .273 | 0-2 | .000 | 1-1 | 1.000 | 3 | 2 | 5 | 6.7 | 3 | 3 | 6 | 0 | 3 | 7 | 9.0 | |
| Boston College | 12/09/2020 | * | 37:08 | 11-16 | .688 | 5-8 | .625 | 0-0 | .000 | 1 | 6 | 7 | 6.8 | 1 | 5 | 4 | 0 | 8 | 27 | 13.5 | |
| at Notre Dame | 12/13/2020 | * | 39:11 | 7-15 | .467 | 4-6 | .667 | 1-2 | .500 | 1 | 2 | 3 | 6.0 | 2 | 8 | 2 | 1 | 3 | 19 | 14.6 | |
| NC State | 12/31/2020 | * | 40:00 | 10-23 | .435 | 3-8 | .375 | 7-8 | .875 | 2 | 9 | 11 | 6.8 | 0 | 1 | 2 | 0 | 3 | 30 | 17.2 | |
| at Notre Dame | 01/03/2021 | * | 36:32 | 5-12 | .417 | 1-6 | .167 | 0-0 | .000 | 2 | 5 | 7 | 6.9 | 0 | 4 | 4 | 0 | 3 | 11 | 16.3 | |
| at Clemson | 01/07/2021 | * | 32:11 | 6-12 | .500 | 3-6 | .500 | 0-0 | .000 | 1 | 3 | 4 | 6.5 | 5 | 3 | 5 | 0 | 1 | 15 | 16.1 | |
| Virginia Tech | 01/10/2021 | * | 34:56 | 7-14 | .500 | 0-2 | .000 | 3-4 | .750 | 1 | 4 | 5 | 6.3 | 2 | 2 | 2 | 0 | 1 | 17 | 16.2 | |
| at Wake Forest | 01/21/2021 | * | 32:07 | 5-8 | .625 | 1-2 | .500 | 6-7 | .857 | 2 | 4 | 6 | 6.3 | 4 | 4 | 4 | 0 | 2 | 17 | 16.3 | |
| Florida St. | 01/24/2021 | * | 33:54 | 5-13 | .385 | 3-7 | .429 | 4-6 | .667 | 3 | 5 | 8 | 6.5 | 1 | 2 | 3 | 0 | 0 | 17 | 16.4 | |
| at Miami (FL) | 01/28/2021 | * | 38:52 | 4-8 | .500 | 3-6 | .500 | 2-2 | 1.000 | 2 | 2 | 4 | 6.3 | 1 | 4 | 3 | 0 | 0 | 13 | 16.1 | |
| Syracuse | 02/02/2021 | * | 31:39 | 2-9 | .222 | 0-3 | .000 | 2-2 | 1.000 | 0 | 1 | 1 | 5.8 | 1 | 2 | 3 | 0 | 2 | 6 | 15.3 | |
| Clemson | 02/04/2021 | * | 37:05 | 7-15 | .467 | 3-8 | .375 | 0-2 | .000 | 0 | 1 | 1 | 5.5 | 2 | 5 | 5 | 0 | 2 | 17 | 15.4 | |
| Wake Forest | 02/07/2021 | * | 38:50 | 9-17 | .529 | 4-8 | .500 | 0-2 | .000 | 2 | 3 | 5 | 5.5 | 5 | 1 | 2 | 0 | 0 | 22 | 15.9 | |
| at Louisville | 02/11/2021 | * | 33:11 | 2-7 | .286 | 1-2 | .500 | 1-2 | .500 | 0 | 1 | 1 | 5.2 | 3 | 5 | 4 | 1 | 1 | 6 | 15.3 | |
| Miami (FL) | 02/16/2021 | * | 38:13 | 3-12 | .250 | 1-6 | .167 | 2-2 | 1.000 | 0 | 7 | 7 | 5.3 | 2 | 10 | 2 | 1 | 3 | 9 | 14.9 | |
| at Florida St. | 02/18/2021 | * | 34:57 | 2-9 | .222 | 1-2 | .500 | 1-2 | .500 | 0 | 1 | 1 | 5.1 | 1 | 4 | 2 | 0 | 0 | 6 | 14.4 | |
| at Boston College | 02/21/2021 | * | 37:12 | 4-14 | .286 | 1-6 | .167 | 0-0 | .000 | 2 | 1 | 3 | 4.9 | 2 | 0 | 2 | 0 | 0 | 9 | 14.1 | |
| at North Carolina | 02/25/2021 | * | 33:39 | 7-15 | .467 | 3-6 | .500 | 0-0 | .000 | 0 | 0 | 0 | 4.7 | 3 | 2 | 2 | 0 | 1 | 17 | 14.3 | |
| Pittsburgh | 02/28/2021 | * | 37:10 | 6-15 | .400 | 3-8 | .375 | 7-10 | .700 | 2 | 3 | 5 | 4.7 | 4 | 1 | 6 | 0 | 2 | 22 | 14.6 | |
| vs Clemson | 03/05/2021 | * | 37:57 | 4-14 | .286 | 1-7 | .143 | 0-0 | .000 | 0 | 2 | 2 | 4.6 | 3 | 3 | 1 | 1 | 2 | 9 | 14.4 | |
| vs NC State | 03/06/2021 | * | 40:00 | 8-11 | .727 | 0-1 | .000 | 1-1 | 1.000 | 0 | 4 | 4 | 4.6 | 3 | 5 | 1 | 1 | 0 | 17 | 14.5 | |
| vs SFA | 03/21/2021 | * | 43:27 | 5-19 | .263 | 0-7 | .000 | 4-6 | .667 | 2 | 4 | 6 | 4.6 | 3 | 2 | 3 | 0 | 4 | 14 | 14.5 | |
| vs West Virginia | 03/23/2021 | * | 38:58 | 9-16 | .563 | 4-9 | .444 | 0-0 | .000 | 2 | 2 | 4 | 4.6 | 0 | 2 | 4 | 1 | 3 | 22 | 14.8 | |
| vs South Carolina | 03/28/2021 | * | 40:00 | 8-14 | .571 | 2-4 | .500 | 2-2 | 1.000 | 1 | 3 | 4 | 4.6 | 3 | 5 | 3 | 0 | 2 | 20 | 15.0 | |
| Totals | | | 26 | 949:43 | 147-342 | .430 | 47-137 | .343 | 48-66 | .727 | 33 | 86 | 119 | 4.6 | 59 | 90 | 82 | 6 | 50 | 389 | 15.0 |

Player Averages

| Games Played | Minutes/ game | Points/ game | FG Pct | 3FG Pct | FT Pct | Rebounds/ game | Assists/ game | Turnovers/ game | Assist/Turnover ratio | Steals/ game | Blocks/ game |
|--------------|---------------|--------------|--------|---------|--------|----------------|---------------|-----------------|-----------------------|--------------|--------------|
| 26 | 36.5 | 15.0 | 43.0 | 34.3 | 72.7 | 4.6 | 3.5 | 3.2 | 1.1 | 1.9 | 0.2 |



CARMYN HARRISON

#33

Freshman • 6'2" • Forward • Memphis, Tenn. • Hutchison School

THE HARRISON FILE

KEY SEASON AVERAGES

| Points | Rebounds | Steals |
|------------|------------|------------|
| 0.0 | 0.0 | 0.0 |

CAREER & SEASON HIGHS

Points

Career:

Field Goals

Career:

Field Goals Attempted

Career:

3- Point Field Goals

Career:

3- Point Field Goals Attempted

Career:

Free Throws

Career:

Free Throws Attempted

Career:

Rebounds

Career:

Assists

Career:

Steals

Career:

Blocks

Career:

Turnovers

Career:

Minutes

Career:

Miscellaneous

| | Career | 21-22 |
|--------------------------|--------|-------|
| Double-Doubles: | - | - |
| Double Figure Points: | - | - |
| Double Figure Rebounds: | - | - |
| Led Team In Points/Rebs: | - | - |
| 20+ Points: | - | - |

2020-21 GAME-BY-GAME



KIERRA FLETCHER

#41

5th Year • 5'9" • Guard • Warren, Mich. • Warren Cousino High School

THE FLETCHER FILE

KEY SEASON AVERAGES (2020-21)

Points **13.0** Rebounds **5.5** Assists **3.7**

CAREER & SEASON HIGHS

Points

Season: 21, 2x, last vs. Clemson (3/5/21)
 Career: 25 at Houston (11/9/18)

Field Goals

Season: 9 vs. Clemson (3/5/21)
 Career: 10 at Houston (11/9/18)

Field Goals Attempted

Season: 16 vs. Clemson (3/5/21)
 Career: 16, 3x, last vs. Clemson (3/5/21)

3- Point Field Goals

Season: 3 at Notre Dame (1/3/21)
 Career: 3 at Notre Dame (1/3/21)

3- Point Field Goals Attempted

Season: 5, 3x, last vs. Pitt (2/28/21)
 Career: 5, 3x, last vs. Pitt (2/28/21)

Free Throws

Season: 8, 2x, last vs. Pitt (2/28/21)
 Career: 10 vs. Syracuse (1/20/19)

Free Throws Attempted

Season: 10 vs. Pitt (2/28/21)
 Career: 11, 2x, last vs. Syracuse (1/20/19)

Rebounds

Season: 9, vs. Stephen F. Austin (3/21/21)
 Career: 14 vs. Seton Hall (12/20/18)

Assists

Season: 8 at Miami (1/28/21)
 Career: 8 at Miami (1/28/21)

Steals

Season: 3 vs. South Carolina (3/28/21)
 Career: 7 vs. Miami (2/22/18)

Blocks

Season: 3 at Notre Dame (1/3/21)
 Career: 3, 2x, last at Notre Dame (1/3/21)

Turnovers

Season: 3, 6x, last vs. West Virginia (3/23/21)
 Career: 7, 2x, last at Houston (11/9/18)

Minutes

Season: 44, vs. Stephen F. Austin (3/21/21)
 Career: 48 at Houston (11/9/18)

Miscellaneous

| | | |
|--------------------------|--------|-------|
| | Career | 20-21 |
| Double-Doubles: | 4 | - |
| Double Figure Points: | 51 | 16 |
| Double Figure Rebounds: | 6 | - |
| Led Team In Points/Rebs: | 11/15 | 5/2 |
| 20+ Points: | 4 | 2 |

2020-21 GAME-BY-GAME

#41 FLETCHER, Kierra

| Opponent | Date | GS | MIN | Total | | 3-Pointers | | Free throws | | Rebounds | | | | PF | A | T/O | BLK | STL | PTS | AVG | |
|-------------------|------------|----|-----------|---------------|---------------|-------------|--------------|-------------|--------------|-------------|-----------|-----------|------------|------------|-----------|-----------|-----------|-----------|-----------|------------|-------------|
| | | | | FG-FGA | PCT | 3FG-3FGA | PCT | FT-FTA | PCT | OFF | DEF | TOT | AVG | | | | | | | | |
| NC State | 12/31/2020 | | 18:10 | 3-9 | .333 | 2-3 | .667 | 2-2 | 1.000 | 1 | 2 | 3 | 3.0 | 3 | 2 | 0 | 0 | 0 | 10 | 10.0 | |
| at Notre Dame | 01/03/2021 | | 31:35 | 6-11 | .545 | 3-4 | .750 | 4-5 | .800 | 1 | 6 | 7 | 5.0 | 3 | 4 | 1 | 3 | 2 | 19 | 14.5 | |
| at Clemson | 01/07/2021 | * | 27:46 | 6-15 | .400 | 1-2 | .500 | 0-1 | .000 | 3 | 0 | 3 | 4.3 | 3 | 3 | 2 | 0 | 1 | 13 | 14.0 | |
| Virginia Tech | 01/10/2021 | * | 38:46 | 3-11 | .273 | 1-2 | .500 | 7-9 | .778 | 2 | 3 | 5 | 4.5 | 0 | 4 | 1 | 0 | 0 | 14 | 14.0 | |
| at Wake Forest | 01/21/2021 | * | 31:49 | 3-8 | .375 | 0-1 | .000 | 0-0 | .000 | 2 | 4 | 6 | 4.8 | 0 | 1 | 1 | 1 | 2 | 6 | 12.4 | |
| Florida St. | 01/24/2021 | * | 37:16 | 8-15 | .533 | 1-4 | .250 | 1-1 | 1.000 | 2 | 5 | 7 | 5.2 | 3 | 4 | 1 | 0 | 0 | 18 | 13.3 | |
| at Miami (FL) | 01/28/2021 | * | 36:36 | 4-12 | .333 | 2-5 | .400 | 2-2 | 1.000 | 1 | 4 | 5 | 5.1 | 1 | 8 | 1 | 0 | 0 | 12 | 13.1 | |
| Syracuse | 02/02/2021 | * | 37:56 | 6-11 | .545 | 1-3 | .333 | 5-6 | .833 | 2 | 6 | 8 | 5.5 | 1 | 5 | 1 | 0 | 2 | 18 | 13.8 | |
| Clemson | 02/04/2021 | * | 34:24 | 3-9 | .333 | 0-2 | .000 | 2-2 | 1.000 | 1 | 5 | 6 | 5.6 | 3 | 3 | 3 | 1 | 2 | 8 | 13.1 | |
| Wake Forest | 02/07/2021 | * | 38:16 | 2-11 | .182 | 1-5 | .200 | 1-2 | .500 | 1 | 1 | 2 | 5.2 | 3 | 5 | 1 | 0 | 0 | 6 | 12.4 | |
| at Louisville | 02/11/2021 | * | 40:00 | 5-11 | .455 | 1-1 | 1.000 | 8-8 | 1.000 | 0 | 8 | 8 | 5.5 | 3 | 3 | 3 | 0 | 1 | 19 | 13.0 | |
| Miami (FL) | 02/16/2021 | * | 38:22 | 6-12 | .500 | 1-4 | .250 | 2-2 | 1.000 | 1 | 4 | 5 | 5.4 | 0 | 3 | 2 | 1 | 0 | 15 | 13.2 | |
| at Florida St. | 02/18/2021 | * | 34:44 | 3-7 | .429 | 1-1 | 1.000 | 4-6 | .667 | 1 | 4 | 5 | 5.4 | 3 | 5 | 3 | 0 | 0 | 11 | 13.0 | |
| at Boston College | 02/21/2021 | * | 27:18 | 2-8 | .250 | 1-4 | .250 | 0-0 | .000 | 2 | 2 | 4 | 5.3 | 4 | 1 | 1 | 1 | 0 | 5 | 12.4 | |
| at North Carolina | 02/25/2021 | * | 33:22 | 3-9 | .333 | 0-3 | .000 | 0-0 | .000 | 0 | 4 | 4 | 5.2 | 2 | 2 | 3 | 0 | 0 | 6 | 12.0 | |
| Pittsburgh | 02/28/2021 | * | 37:37 | 6-13 | .462 | 1-5 | .200 | 8-10 | .800 | 0 | 3 | 3 | 5.1 | 1 | 6 | 1 | 1 | 1 | 21 | 12.6 | |
| vs Clemson | 03/05/2021 | * | 40:00 | 9-16 | .563 | 1-3 | .333 | 2-2 | 1.000 | 2 | 4 | 6 | 5.1 | 0 | 5 | 3 | 0 | 0 | 21 | 13.1 | |
| vs NC State | 03/06/2021 | * | 40:00 | 4-10 | .400 | 2-4 | .500 | 0-0 | .000 | 3 | 4 | 7 | 5.2 | 2 | 4 | 1 | 0 | 2 | 10 | 12.9 | |
| vs SFA | 03/21/2021 | * | 44:40 | 4-13 | .308 | 1-4 | .250 | 2-6 | .333 | 5 | 4 | 9 | 5.4 | 2 | 3 | 1 | 1 | 0 | 11 | 12.8 | |
| vs West Virginia | 03/23/2021 | * | 31:51 | 6-12 | .500 | 1-2 | .500 | 1-3 | .333 | 2 | 4 | 6 | 5.5 | 3 | 4 | 3 | 2 | 1 | 14 | 12.9 | |
| vs South Carolina | 03/28/2021 | * | 38:39 | 7-15 | .467 | 1-2 | .500 | 1-2 | .500 | 3 | 4 | 7 | 5.5 | 0 | 3 | 2 | 0 | 3 | 16 | 13.0 | |
| Totals | | | 19 | 739:08 | 99-238 | .416 | 23-64 | .359 | 52-69 | .754 | 35 | 81 | 116 | 5.5 | 40 | 78 | 35 | 11 | 17 | 273 | 13.0 |

Player Averages

| Games Played | Minutes/game | Points/game | FG Pct | 3FG Pct | FT Pct | Rebounds/game | Assists/game | Turnovers/game | Assist/Turnover ratio | Steals/game | Blocks/game |
|--------------|--------------|-------------|--------|---------|--------|---------------|--------------|----------------|-----------------------|-------------|-------------|
| 21 | 35.2 | 13.0 | 41.6 | 35.9 | 75.4 | 5.5 | 3.7 | 1.7 | 2.2 | 0.8 | 0.5 |





DIGNA STRAUTMĀNE #45

5th Year • 6'2" • Forward • Riga, Latvia • Syracuse

THE STRAUTMĀNE FILE

KEY SEASON AVERAGES

| Points | Rebounds | Steals |
|------------|------------|------------|
| 0.0 | 0.0 | 0.0 |

CAREER & SEASON HIGHS

Points

Career:

Field Goals

Career:

Field Goals Attempted

Career:

3- Point Field Goals

Career:

3- Point Field Goals Attempted

Career:

Free Throws

Career:

Free Throws Attempted

Career:

Rebounds

Career:

Assists

Career:

Steals

Career:

Blocks

Career:

Turnovers

Career:

Minutes

Career:

Miscellaneous

| | Career | 21-22 |
|--------------------------|--------|-------|
| Double-Doubles: | - | - |
| Double Figure Points: | - | - |
| Double Figure Rebounds: | - | - |
| Led Team In Points/Rebs: | - | - |
| 20+ Points: | - | - |

2020-21 GAME-BY-GAME

TV/RADIO ROSTER



Loyal McQueen **00**
G • 5-8 • So.



Sarah Bates **3**
G • 5-9 • r-Sr.



Elizabete Bulane **10**
G • 5-7 • Fr.



Aixa Wone Aranz **11**
F • 6-3 • Jr.



Lorela Cubaj **13**
F • 6-4 • 5th Yr.



Anisa Clark **14**
G • 5-7 • So.



Avyonce Carter **15**
G • 5-10 • So.



Nerea Hermosa **20**
C • 6-5 • Jr.



Eyllia Love **24**
G/F • 6-1 • So.



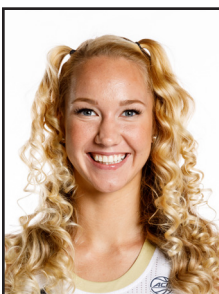
Lotta-Maj Lahtinen **31**
G • 5-9 • Sr.



Carmyn Harrison **33**
F • 6-2 • Fr.



Kierra Fletcher **41**
G • 5-9 • 5th Yr.



Digna Strautmane **45**
F • 6-2 • 5th Yr.



Nell Fortner
Head Coach



Tasha Butts
Associate Head Coach



Blanche Alverson
Assistant Coach



Murriel Page
Assistant Coach



Mickie DeMoss
Chief of Staff



Ashlee Villarreal
Director of Operations



Sydney Durrah
Director of Video



Cortnee Walton
Recruiting Operations



Katie Wilkins
Graduate Manager



Shannon Jackson
Player Development Coach



Rachel Matthews
Athletic Trainer