

An aerial, sepia-toned photograph of Bobby Dodd Stadium at Georgia Tech. The stadium is the central focus, with its large seating bowl and field visible. The Georgia Tech interlocking 'G' logo is prominently displayed on the field. Surrounding the stadium are various campus buildings and green spaces. The image has a warm, brownish-gold color scheme.

**GEORGIA
TECH®**

**WELCOME BACK TO
BOBBY DODD STADIUM**

GEORGIA TECH FOOTBALL 2020

WELCOME BACK TO BOBBY DODD STADIUM

Georgia Tech athletics is excited to welcome fans back to Bobby Dodd Stadium this fall. The health and safety of our student-athletes, staff, fans and community is our top priority.

With that in mind, the Georgia Tech Athletic Association, following guidance from the University System of Georgia (USG), Georgia Gov. Brian Kemp's office, public health officials and the Atlantic Coast Conference, has announced a series of safety protocols that will be put in place for fans attending Georgia Tech football games at Bobby Dodd Stadium this fall, should we be able to carry out the season as currently planned.

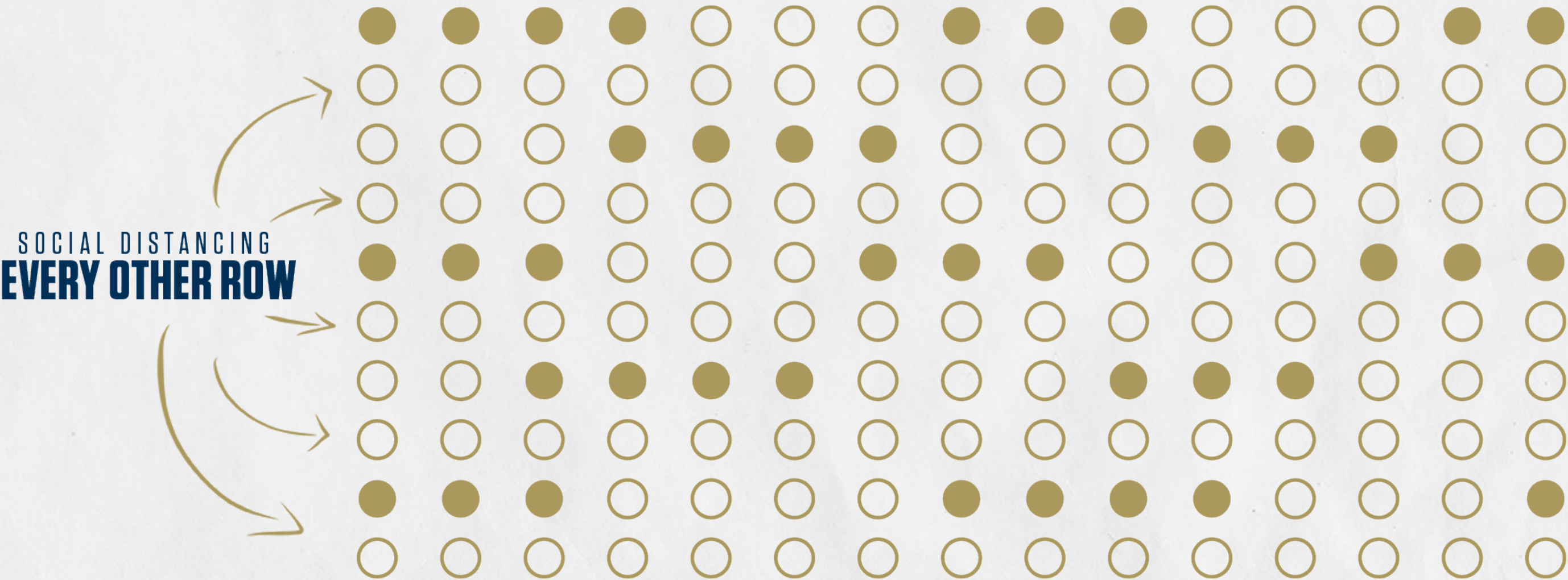
STADIUM CAPACITY

Attendance at games at Bobby Dodd Stadium will be limited to 20 percent of the stadium's full capacity, or approximately 11,000 fans per game.

- **Allows for appropriate social distancing within Bobby Dodd Stadium's seating bowl.**
- **Seating clusters generally ranging from 2-8 tickets.**
- **Ticket holders are required to sit in their reserved seats and not interact with fans in other clusters.**



STADIUM SEATING AND DISTANCING



AT LEAST
THREE SEATS
BETWEEN GROUPS

STADIUM CLEANLINESS



Additional custodial staff will be present for all games to keep concourses and restrooms stocked and cleaned throughout the game



Frequency and scope of washdowns and cleanings throughout the stadium will be increased



Hand sanitizing stations available throughout the stadium



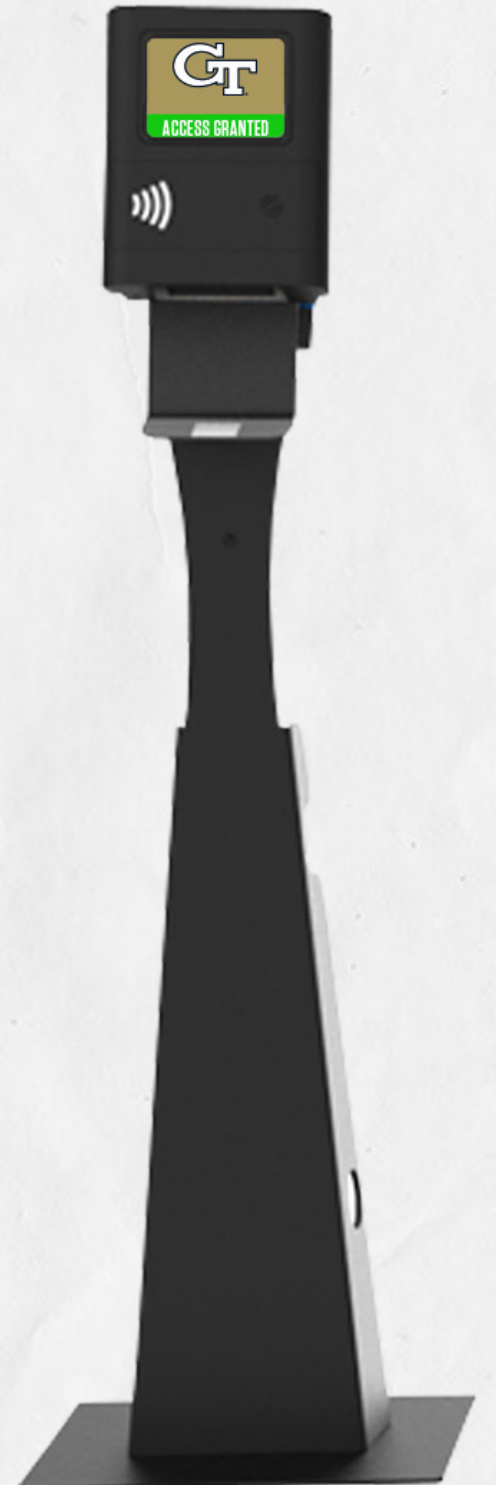
Water fountains and water bottle filling stations will continue to be available throughout the stadium and will be routinely sanitized by stadium staff throughout the game

TICKETING

Tickets will be distributed based on the following order of priority, while supplies last:

- 1. 2020 season ticket members who have opted in for the 2020 season (season ticket members' priority will be based on Alexander-Tharpe Fund priority points)**
- 2. Stinger Mobile Pass holders**
- 3. If tickets still remain, single-game tickets will be made available to the general public**

Details on the distribution of Georgia Tech student tickets will be communicated to Georgia Tech students.



TICKETING

In order to allow for contactless entry to Bobby Dodd Stadium, all 2020 Georgia Tech football tickets will be delivered electronically to the ticket holder's mobile device.

Contactless tickets and parking passes are similar to traditional event tickets, but easier to use and more secure.



PARKING AND TAILGATING

Parking will be offered first to 2020 season ticket members, with the goal of matching fans to their current parking lot.

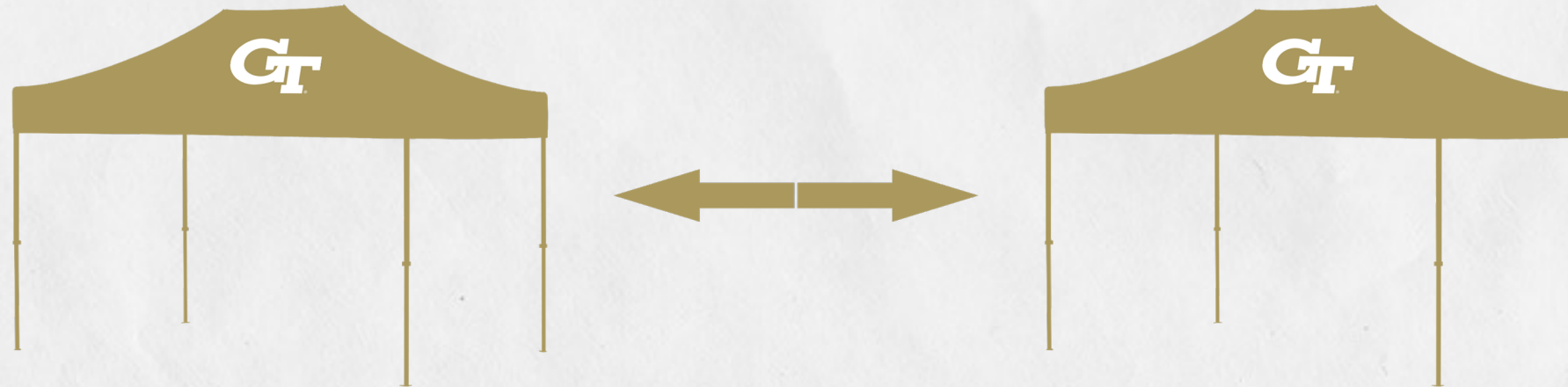
If availability remains after season ticket members have been allocated parking, spaces will be assigned based first on A-T priority points, then in order of when requests were received.

Parking passes will be delivered electronically to the ticket holder's mobile device to allow for contactless entry.

Social-distancing guidelines will apply in Institute-controlled parking areas.

Hand-washing and hand-sanitizing stations available throughout parking areas.

Fans are strongly encouraged to wear face coverings at all times on Georgia Tech campus, beginning with when they leave their vehicles.



ENTERING THE STADIUM

All tickets will have a designated entrance gate listed for entry.

Magnetometers and ticket scanner pedestals installed for contactless stadium entry process.



FACE COVERINGS

All individuals (ages 2 and up) are required to wear an approved personal face covering at all times within the stadium perimeter.

Approved face coverings must:

- Be made with at least two layers of breathable material
- Fully cover the nose and mouth and secure under the chin
- Fit snugly but comfortably against the side of the face
- Be secured to allow the guest to not have to keep the covering in place with his/her hands

Not permitted:

- Open-chin triangle bandanas
- Face coverings containing valves, mesh material and or holes of any kind
- Costume masks

Exception:

- Face coverings may be removed while eating or drinking when an individual is sitting in his/her assigned seat or fixed area designated for eating or drinking within club areas.

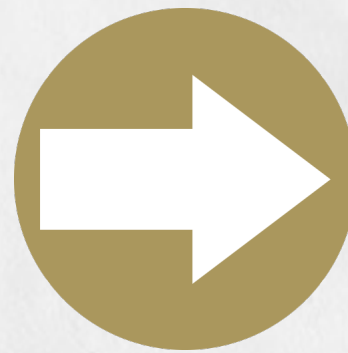
Fans with documented health condition that does not allow him/her to wear a face covering must email gameday@athletics.gatech.edu at least two weeks prior to the game(s) he/she plans to attend to request an exemption.



UPDATED BAG POLICY

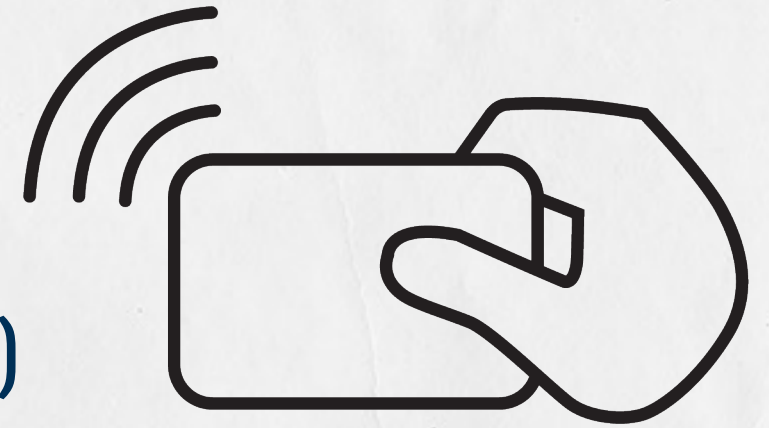
Bag policy has been amended to aid in contactless stadium entry process.

- Each fan can bring in one (1) 1-gallon clear/resealable “Ziploc” style bag ONLY.
- ALL other bags are prohibited from Bobby Dodd Stadium in 2020 (including clear bags and small clutch bags previously permitted as a part of the bag policy).
- Exceptions will continue to be made for medical and diaper bags.
- Each fan may bring in one (1) sealed bottle of water (up to 1L) and one (1) travel-sized bottle of hand sanitizer (3 oz).



UPDATED CONCESSION OPERATIONS

- **Line queuing designed to maintain social distancing**
- **Plastic shields to separate fans from stadium staff**
- **Contactless point-of-sale technology available (e.g. Apple Pay)**
- **Additional stands added throughout the stadium, including grab-and-go stations and beverage-only stands and portables.**
- **Complimentary water fountains and water bottle filling stations will continue to be available.**



ALCOHOL AT BOBBY DODD STADIUM

For the first time, Georgia Tech athletics will sell alcohol in general seating areas of Bobby Dodd Stadium this year.



View the full alcohol policy at ramblinwreck.com/alcohol-policy

PREMIUM SEATING

- Suite capacity reduced to number of seats available in each suite.
- Suite owners assume responsibility for social distancing enforcement within closed suite environment.
- Suite ticket holders must follow policies regarding face coverings any time that they are not inside the suite that they are ticketed for.
- Club and Tech Terrace premium areas will have 20% capacity limit.
- Signage and distance markers have been added throughout the club areas to promote social distancing.



PRE-GAME CHANGES

In accordance with guidance from public health officials, the following traditional pregame Georgia Tech football festivities will not be held this year:

- Yellow Jacket Alley (will be replaced this year by a new virtual team arrival celebration)
- Georgia Tech marching band pregame show on Callaway Plaza steps
- 404 Tailgate
- Wreckfest (Georgia Tech Bookstore and select food vendors will remain on the stadium's exterior)



GAMEDAY APP / VIRTUAL OFFERINGS

An all-new Georgia Tech Yellow Jackets app is now available in the App Store and Google Play for iPhone and Android devices.

Fans are **HIGHLY** encouraged to download this new app to access breaking news, receive push notifications for alerts, and to have the best Georgia Tech gameday experience, whether on campus or in your home.

App Features:

- Free live audio
- Interactive fan engagement experiences, including an in-stadium or at-home light show and special offers from Georgia Tech partners
- Access your mobile tickets and account for easy access on gameday
- Video highlights and features
- Rosters, news, schedules, official gear and more

Download now at ramblinwreck.com/app





**GEORGIA
TECH®**

**WELCOME BACK TO
BOBBY DODD STADIUM**

GEORGIA TECH FOOTBALL 2020