



# 2018-19 GEORGIA TECH WOMEN'S BASKETBALL

Georgia Tech Athletics Association Communications & Public Relations • WBB Contact: Liz Ryan  
Office: 404-894-5445 • Cell: 404-431-9619 • Email: lryan@athletics.gatech.edu • @GTWBB

## 2018-19 SCHEDULE

**Overall:** 13-8 **ACC:** 3-5 **Streak:** L2

**Home:** 8-2 **Away:** 2-5 **Neutral:** 3-1

<b>Nov. 4</b>	<b>COASTAL GEORGIA (Exh.)</b>	<b>W, 95-46</b>
Nov. 9	at Houston	L, 95-89 (20T)
<b>Nov. 11</b>	<b>APP STATE</b>	<b>W, 71-53</b>
<b>Nov. 14</b>	<b>WESTERN CAROLINA</b>	<b>W, 84-49</b>
<b>Nov. 18</b>	<b>No. 14 GEORGIA</b>	<b>W, 63-53</b>
Nov. 22	vs. George Washington^	W, 70-55
Nov. 23	vs. Idaho State^	W, 74-51
Nov. 29	at No. 7 Maryland#	L, 67-54
Dec. 2	at Georgia State	W, 78-71
<b>Dec. 5</b>	<b>ALABAMA STATE</b>	<b>W, 69-42</b>
<b>Dec. 16</b>	<b>KENNESAW STATE</b>	<b>W, 60-35</b>
Dec. 20	vs. Seton Hall&	W, 84-73
Dec. 21	vs. Dayton&	L, 85-66
<b>Dec. 30</b>	<b>WOFFORD</b>	<b>W, 81-40</b>
Jan. 3	at Boston College*	W, 81-76
<b>Jan. 6</b>	<b>No. 2 NOTRE DAME*</b>	<b>L, 76-55</b>
<b>Jan. 10</b>	<b>DUKE*</b>	<b>W, 70-64</b>
Jan. 13	at No. 2 Louisville*	L, 61-44
Jan. 17	at Clemson*	L, 71-61
<b>Jan. 20</b>	<b>No. 12 SYRACUSE*</b>	<b>W, 65-55</b>
<b>Jan. 27</b>	<b>No. 8 NC STATE*</b>	<b>L, 68-60</b>
Jan. 31	at North Carolina*	L, 91-90
Feb. 3	at Notre Dame*	12 p.m.
<b>Feb. 7</b>	<b>PITTSBURGH*</b>	<b>7 p.m.</b>
Feb. 10	at Wake Forest*	1 p.m.
<b>Feb. 17</b>	<b>VIRGINIA TECH*</b>	<b>1 p.m.</b>
<b>Feb. 21</b>	<b>CLEMSON*</b>	<b>7 p.m.</b>
Feb. 24	at Virginia*	3 p.m.
Feb. 28	at Miami*	7 p.m.
<b>March 3</b>	<b>FLORIDA STATE*</b>	<b>1 p.m.</b>
March 6-10	at ACC Tournament!	

### Home games in BOLD

^ - Cancun Challenge (Cancun, Mexico)

# - ACC/Big Ten Challenge

& - West Palm Beach Invitational (West Palm Beach, Fla.)

\* - ACC Conference Game

! - ACC Tournament (Greensboro, N.C.)

**Head Coach:** MaChelle Joseph

**Record at GT:** 307-199

**Season:** 16th

**Coach Jo vs. Notre Dame:** 0-10

**GT vs. Notre Dame:** 0-11

**Last meeting vs. Notre Dame:**

Jan. 6, 2019 - ND 76, Georgia Tech 55



**Georgia Tech**  
(13-8, 3-5 ACC)



**No. 5 Notre Dame**  
(20-2, 7-1 ACC)

**Head Coach:** Muffet McGraw

**Record at ND:** 820-232 (32nd)

**Coach McGraw vs GT:** 11-0

**Notre Dame vs. GT:** 11-0

**Last game:** 1/27/18

North Carolina 78, Notre Dame 73

## STARTING FIVE

1. Georgia Tech concludes the home-and-home series with Notre Dame on Sunday in South Bench. Tip is slated for noon on RSN with Jenn Hildreth and Chelsea Shine Wilson on the call. Notre Dame leads the all-time series 11-0.
2. The Yellow Jackets are coming off a tough midweek loss at North Carolina on Thursday, 91-90. The Jackets trailed by 14 points in the second half and made a strong comeback to tie the game with less than a minute to play. The game was sealed at the free throw line.
3. Georgia Tech and Notre Dame are meeting for the 12th time on the hardwood on Sunday with the Fighting Irish taking all 11 previous meetings. Notre Dame visited Atlanta in early January in the first match-up, securing the win, 76-55. Three Yellow Jackets scored in double-figures led by Elizabeth Balogun with 14 points.
4. Freshman Elizabeth Balogun continues to show her dominance in the ACC with a repeat 30-plus point performance at North Carolina. The freshman posted a new personal-high with 35 points to lead all scorers.
5. Head coach MaChelle Joseph is in her 16th season on The Flats and carries an all-time career record of 307-199. Joseph is the all-time winningest coach in program history and holds the highest winning percentage in Yellow Jacket history at 60.9 percent.



**Elizabeth Balogun scored a game- and career-high 35 points at UNC.**

## THE SERIES

Georgia Tech and Notre Dame have met on the hardwood 11 times in program history with Notre Dame leading the all-time series, 11-0. The Yellow Jackets and Fighting Irish met twice last season with ND taking both decisions. The Fighting Irish took the first meeting between the programs in early January to begin the home-and-home series this season. ND dished out 30 assists on 34 made field goals and shot 54.8 percent (34-62) from the field to seal the win. Notre Dame scored 60 points in the paint and had five players finish in double-figures led by Jessica Shepard with 19 points. Elizabeth Balogun led the Jackets with 14 points, followed by Elizabeth Dixon with 12 points. Kierra Fletcher had six of Tech's 12 assists.

## LAST TIME OUT

The Yellow Jackets dropped a hard decision at North Carolina on Thursday in a game that came down to the final minute of play. Tech trailed by 14 points in the second half, but made a comeback to tie the game with 2.7 seconds left on the clock when Elizabeth Balogun hit three free throws to knot the game at 90-90. On the final possession, Janelle Bailey headed to the free throw line after being fouled and hit the back end of the two attempts with 0.9 ticks left to secure the win. Balogun led all scorers with 35 points in the loss, going 11-for-20 from the field and 7-of-9 from the charity stripe. The freshman hit six three-pointers to tie her personal-best. UNC hit 14 three-pointers in the win, but dropped the rebounding battle, 39-24. Lorela Cubaj posted her fourth double-double behind 17 points and 12 rebounds.

## POSTSEASON SUCCESS IN 2018

With an at-large bid to the WNIT last season, the Yellow Jackets made their 11th postseason appearance in 12 seasons and third-straight WNIT appearance. Tech went undefeated when hosting WNIT opponents inside McCamish Pavilion last season, defeating Bethune Cookman in the first round, 85-32, followed by a 91-47 rout over UAB before hitting the road. The Jackets met Alabama in Tuscaloosa in the third round and led the majority of the game, but fell by a possession to the Crimson Tide.

PROBABLE STARTERS (BASED ON LAST GAME)			GP-GS	PPG	RPG	MPG	NOTES
2	G	Jasmine Carson (Fr., 5-10, Memphis, Tenn.)	13-1	0.8	0.0	3.6	Earned first collegiate start at North Carolina
5	G	Elizabeth Balogun (Fr., 6-1, Chattanooga, Tenn.)	21-21	16.3	5.3	30.5	Four-time ACC Rookie of the Week
13	F	Lorela Cubaj (So., 6-4, Terni, Italy)	21-21	7.2	6.9	27.0	Leads the team in rebounding, averaging 6.9 rpg
22	F	Elizabeth Dixon (Fr., 6-5, Memphis, Tenn.)	21-21	9.7	6.7	25.4	Recorded fourth collegiate double-double against Duke
41	G	Kierra Fletcher (So., 5-9, Warren, Mich.)	21-21	9.3	5.6	31.3	all-ACC Freshman Team; leading returning rebounder
OFF THE BENCH							
00	F	Daijah Jefferson (r-Fr., 6-2, Hopewell, Va.)	16-0	2.4	1.0	9.5	Saw first collegiate action at Houston, playing seven minutes
4	F	Anne Francoise Diouf (r-So., 6-4, Dakar, Senegal)	19-0	1.0	1.9	7.6	Redshirted last season as a sophomore
12	G	Kondalia Montgomery (Fr., 5-7, Tacoma, Wash.)	7-0	0.3	0.4	1.9	Saw action at Houston, scoring a layup
23	F	D'asia Gregg (Fr., 6-2, Florence, S.C.)	15-0	3.1	1.4	7.3	Scored six points in Tech's win over App State
24	G	Chanin Scott (Jr., 6-0, Charlotte, N.C.)	19-0	5.8	3.3	18.3	Scored in double-figures 11 times last season
31	G	Lotta-Maj Lahtinen (Fr., 5-7, Helsinki, Finland)	21-2	4.7	1.9	18.5	Played 19 minutes in season-opener at Houston
33	G	Francesca Pan (Jr., 6-1, Bassano del Grappa, Italy)	21-18	11.8	4.3	30.5	Hit 1,000-career points against Idaho State
44	F	Martine Fortune (Sr., 6-3, Philadelphia, Pa.)	7-0	0.3	1.0	1.9	Tech's lone senior in 2018-19

## QUICK FACTS

## GENERAL

Full Name: ..... Georgia Institute of Technology  
 Location: ..... Atlanta, Ga.  
 Founded: ..... 1885  
 Enrollment: ..... 29,000  
 Nicknames: ..... Ramblin' Wreck, Yellow Jackets  
 Colors: ..... Old Gold and White  
 Arena (Cap.): ..... McCamish Pavilion (8,600)  
 President: ..... Dr. G. P. "Bud" Peterson  
 Athletics Director: ..... Todd Stansbury  
 Faculty Ath. Representative: ..... Dr. Charles L. Isbell, Jr.  
 Sport Administrator: ..... Mark Rountree

## COACHING STAFF

Head Coach: ..... MaChelle Joseph  
 Years at Tech: ..... 16th  
 Twitter: ..... @GT\_Coach\_Jo  
 Career Record: ..... 307-199 (.606)  
 Record at Tech: ..... Same  
 Alma Mater: ..... Purdue, 1992  
 Assistant Coaches: ..... Mark Simons, Sasha Palmer,  
 ..... Jonneshia Pineda  
 Director of WBB Ops: ..... Metra Walthour

## TEAM INFORMATION

2017-18 Overall Record: ..... 20-14  
 2017-18 ACC Record: ..... 6-10  
 2017-18 Home Record: ..... 15-3  
 2017-18 Road Record: ..... 3-9  
 2017-18 Neutral Record: ..... 2-2  
 Letterwinners R/L: ..... 7/7  
 Starters R/L: ..... 4/1  
 Newcomers ..... 6

## HISTORY

First Year: ..... 1974-75 (45th season)  
 Overall Record: ..... 682-626 (.520)  
 ACC Record: ..... 204-359 (.362)  
 ACC Tournament Record: ..... 18-39  
 Postseason Record: ..... 21-24 (NCAA, WNIT & AIAW)  
 NCAA Appearances/Last: ..... 9, 2014  
 NCAA Tournament Record: ..... 5-9  
 WNIT Record: ..... 14-7  
 All-Time Home Record: ..... 367-211  
 All-Time Road Record: ..... 168-279  
 All-Time Neutral Record: ..... 79-78

## ATHLETIC COMMUNICATIONS &amp; PUBLIC RELATIONS

WBB Contact: ..... Liz Ryan  
 Email: ..... lryan@athletics.gatech.edu  
 Phone: ..... 404-894-5445  
 Cell Phone: ..... 404-431-9619  
 Press Row: ..... 404-894-5458  
 Website: ..... www.ramblinwreck.com

**It is incorrect to call it "Georgia Tech University."**

**Officially, it's The Georgia Institute of Technology.  
 But just call us "Georgia Tech."**

## 2018-19 GEORGIA TECH WOMEN'S BASKETBALL ROSTER

## Numerical

No.	Name	YR	HT	POS	Hometown	High School/Previous School
00	Daijah Jefferson	r-Fr.	6-2	F	Hopewell, Va.	Hopewell
2	Jasmine Carson	Fr.	5-10	G	Memphis, Tenn.	McEachern Powder Springs
4	Anne Francoise Diouf	r-So.	6-4	F	Dakar, Senegal	IMG Academy
5	Elizabeth Balogun	Fr.	6-1	G	Chattanooga, Tenn.	Hamilton Heights (Tenn.)
12	Kondalia Montgomery	Fr.	5-7	G	Tacoma, Wash.	Lincoln
13	Lorela Cubaj	So.	6-4	F	Terni, Italy	Istituto Paritario G. Parini
22	Elizabeth Dixon	Fr.	6-5	F	Memphis, Tenn.	Ridgeway
23	D'asia Gregg	Fr.	6-2	F	Florence, S.C.	Wilson
24	Chanin Scott	Jr.	6-0	G	Charlotte, N.C.	Myers Park
31	Lotta-Maj Lahtinen	Fr.	5-7	G	Helsinki, Finland	Makelanrinne Sports
33	Francesca Pan	Jr.	6-1	G	Bassano del Grappa, Italy	Istituto G. Parini Mestre
41	Kierra Fletcher	So.	5-9	G	Warren, Mich.	Warren Cousino
44	Martine Fortune	Sr.	6-3	F	Philadelphia, Pa.	The Shipley School

## Alphabetical

No.	Name	YR	HT	POS	Hometown	High School/Previous School
5	Elizabeth Balogun	Fr.	6-1	G	Chattanooga, Tenn.	Hamilton Heights (Tenn.)
2	Jasmine Carson	Fr.	5-10	G	Memphis, Tenn.	McEachern Powder Springs
13	Lorela Cubaj	So.	6-4	F	Terni, Italy	Istituto Paritario G. Parini
4	Anne Francoise Diouf	r-So.	6-4	F	Dakar, Senegal	IMG Academy
22	Elizabeth Dixon	Fr.	6-5	F	Memphis, Tenn.	Ridgeway
41	Kierra Fletcher	So.	5-9	G	Warren, Mich.	Warren Cousino
44	Martine Fortune	Sr.	6-3	F	Philadelphia, Pa.	The Shipley School
23	D'asia Gregg	Fr.	6-2	F	Florence, S.C.	Wilson
5	Daijah Jefferson	r-Fr.	6-2	F	Hopewell, Va.	Hopewell
31	Lotta-Maj Lahtinen	Fr.	5-7	G	Helsinki, Finland	Makelanrinne Sports
12	Kondalia Montgomery	Fr.	5-7	G	Tacoma, Wash.	Lincoln
33	Francesca Pan	Jr.	6-1	G	Bassano del Grappa, Italy	Istituto G. Parini Mestre
24	Chanin Scott	Jr.	6-0	G	Charlotte, N.C.	Myers Park

**Head Coach:** MaChelle Joseph (Purdue, 1992), 16th season

**Assistant Coach:** Mark Simons (Aquinas College, 1972), 3rd season

**Assistant Coach:** Sasha Palmer (Northern Michigan, 2001), 1st season

**Assistant Coach:** Jonneshia Pineda (Georgia Southwestern State University, 2011), 2nd season

**Director of Operations:** Metra Walthour (Georgia Tech, 2012)

**Assistant Director of Operations:** Brittini Oliver (Tusculum College, 2011)

**Athletic Trainer:** Rachel Matthews

**Director of Olympic Sports Player Development:** Scott McDonald

## HOW TO SAY IT

Elizabeth Balogun	bal-O-gun	Lotta-Maj Lahtinen	LOW-tah MY LAW-tin-in
Lorela Cubaj	low-rell-UH coo-BYE	Francesca Pan	Pawn
Anne Francoise Diouf	ON Franz-waz DI-ufh	Chanin Scott	Chan-IN
D'asia Gregg	D-asia		
Daijah Jefferson	day-JUH		

## BY CLASS:

Seniors (1): Martine Fortune  
 Juniors (2): Francesca Pan, Chanin Scott  
 Sophomores (3): Lorela Cubaj, Anne Francoise Diouf, Kierra Fletcher  
 Freshman (7): Elizabeth Balogun, Jasmine Carson, Elizabeth Dixon, D'asia Gregg, Daijah Jefferson, Lotta-Maj Lahtinen, Kondalia Montgomery

## BY STATE/COUNTRY:

Finland: Lotta-Maj Lahtinen  
 Italy: Francesca Pan, Lorela Cubaj  
 Michigan: Kierra Fletcher  
 Nigeria: Elizabeth Balogun  
 North Carolina: Chanin Scott  
 Pennsylvania: Martine Fortune  
 Senegal: Anne Francoise Diouf  
 South Carolina: D'asia Gregg  
 Tennessee: Jasmine Carson, Elizabeth Dixon  
 Virginia: Daijah Jefferson  
 Washington: Kondalia Montgomery

## BY POSITION:

Guards: Elizabeth Balogun, Jasmine Carson, Kierra Fletcher, Lotta-Maj Lahtinen, Kondalia Montgomery, Francesca Pan, Chanin Scott  
 Forwards: Lorela Cubaj, Anne Francoise Diouf, Elizabeth Dixon, Martine Fortune, D'asia Gregg, Daijah Jefferson

## SERIES HISTORY

**Overall:** Notre Dame leads 11-0

**Current Streak:** L11

**Home Games:** Notre Dame leads 6-0

**Last:** 1/6/19 - ND 76, GT 55

**Away Games:** Notre Dame leads 5-0

**Last:** 2/11/18 - ND 85, GT 69

**Neutral Sites:** N/A

## LAST MEETINGS VS. NOTRE DAME

Jan. 6, 2019	h	L	76-55
Jan. 11, 2018	a	L	85-69
Jan. 7, 2018	h	L	77-54
Feb. 12, 2017	a	L	69-90
Jan. 2, 2017	h	L	38-55
Jan. 28, 2016	h	L	42-54
Dec. 30, 2015	a	L	76-85
Feb. 19, 2015	h	L	61-71
Jan. 22, 2015	a	L	76-89
Feb. 17, 2014	a	L	72-87
Nov. 29, 1996	h	L	69-76

## TEAM COMPARISON



Record	13-8
Conference Record	3-5
Points per game	70.0
Scoring Margin	+6.6
FG Percentage	.405
3-pt FG Percentage	.331
3-pt FG Made Per Game	5.6
FT Percentage	.678
Rebounds per game	41.7
Rebounding Margin	+6.9
Assists Per Game	12.5
Turnovers Per Game	17.9
Turnover Margin	+1.7
Steals Per Game	10.6
Blocks Per Game	4.3



Record	20-2
Conference Record	7-1
Points per game	87.2
Scoring Margin	+24.3
FG Percentage	.518
3-pt FG Percentage	.351
3-pt FG Made Per Game	4.2
FT Percentage	.721
Rebounds per game	43.3
Rebounding Margin	+9.6
Assists Per Game	20.0
Turnovers Per Game	14.9
Turnover Margin	+2.0
Steals Per Game	8.8
Blocks Per Game	5.4

## TOP STAT LEADERS

### POINTS

Elizabeth Balogun, Fr., G  
• 16.3 ppg

### REBOUNDS

Lorela Cubaj, So., F  
• 6.9 rpg

### ASSISTS

Kierra Fletcher, So., G  
• 2.6 apg

### STEALS

Francesca Pan, Jr., G  
• 2.0 spg

### POINTS

Arike Ogunbowale, Sr., G  
• 21.5 ppg

### REBOUNDS

Jessica Shepard, Sr., F  
• 9.5 rpg

### ASSISTS

Jackie Young, Jr., G  
• 4.5 apg

### STEALS

Arike Ogunbowale, Sr., G  
• 1.8 spg

## CUE THE ITALIAN

In Tech's last three games, sophomore Lorela Cubaj has nearly averaged a double-double with 10.3 points and 9.0 rebounds. At North Carolina, Cubaj recorded her fourth career double-double with 17 points and 12 rebounds. In the previous two games against NC State and Syracuse, Cubaj averaged 7.0 points and 7.5 rebounds.

## BLAZING BALOGUN

In Tech's game at North Carolina (1/31), freshman Elizabeth Balogun exploded with 35 points to set a new career-high. The performance marked her second 30-plus point outing in her inaugural season making her the first freshman in the 21st century at Georgia Tech to score 35 points. Only two other freshmen in program history have scored more in a single game - Kisha Ford (41 vs. ETSU - 2/9/94) and Niesha Butler (40 vs. Florida State - 1/2/99).

In the nation, Balogun is the fourth leading freshmen scorer.

## FRESHMEN SCORERS - National Research (Overall)

1. Chrisyn Carr - Texas Tech (29th)	19.4
2. Shaylee Gonzales - BYU (105th)	16.7
3. Rhyn Howard - Kentucky (115th)	16.4
4. Elizabeth Balogun - Georgia Tech (123rd)	16.3
5. Myasia Jones - Savannah St. (133rd)	16.1

## UPSET, UPSET

This season, Georgia Tech has taken down two nationally ranked opponents in McCamish Pavilion - No. 14 Georgia (11/18) and No. 12 Syracuse (1/20).

The last time Georgia Tech defeated two nationally ranked opponents in a season dates back to the 2011-12 season when the Jackets upset No. 23 North Carolina (2/12 - 56-54 - Away) and No. 17/16 Georgetown (3/20 - 76-64 - NCAA).

Tech last defeated two top 15 programs in the same season in 2010-11.

-Jan. 6 vs. No. 8/8 North Carolina - 71-70  
-Feb. 24 at No. 13/16 North Carolina - 64-57  
-March 4 vs. No. 13/15 Maryland - 70-64

## STRENGTH OF SCHEDULE

When Georgia Tech welcomed No. 8 NC State to McCamish Pavilion on Jan. 27, the Jackets met their fourth nationally ranked opponent in the ACC in seven games - having already met No. 2 Notre Dame, No. 2 Louisville and No. 12 Syracuse.

Showing the strength of the ACC, since MaChelle Joseph has taken over the helm of the program in 2003-04, Tech has historically met at least three nationally ranked teams in their first seven games to open the ACC in eight seasons (including 2018-19).

Below is a breakdown of the seasons:  
2018-19: four in the first six games  
2016-17: five in the first seven games  
2014-15: three top 10 teams in first six games  
2012-13: four in the first seven games  
2011-12: three in the first five games  
2007-08: three in the first six games  
2005-06: three in the first seven games  
2004-05: four in the first six games

In six additional seasons, Tech has met two nationally ranked opponents in the first five games and in the remaining two seasons (2003-04, 2006-07), Tech met one top 25 team in the early going.

## A DOMINATING DIXON

Freshmen Elizabeth Dixon has made quite the impact since arriving on The Flats and it hasn't been more apparent than the start of ACC play. In Tech's game against Duke on Jan. 10,

Dixon recorded her fourth double-double of the season with a career-high 22 points to go with a personal-best 17 rebounds.

Dixon's 17 rebounds marked the second time this season a Yellow Jacket has pulled down 17 rebounds in a game - the first being fellow freshman Elizabeth Balogun against Boston College.

The last time a freshman had four double-doubles in a season dates back to Zaire O'Neil in 2014-15 when O'Neil recorded five her inaugural season. Kaela Davis recorded seven double-doubles in her inaugural season back in 2013-14.

Following her week against Duke and at Louisville, Dixon earned her second ACC Co-Rookie of the Week honor. She finished with six rebounds and three points against the Cardinals to mark the fifth time this season a freshman has earned the weekly honor.

## QUITE THE PAIR

Freshmen Elizabeth Balogun and Elizabeth Dixon have made quite an impact in their first 21 collegiate games. Balogun leads the team in scoring (16.3 ppg) and Dixon is second on the team lead in rebounding (6.7 rpg) - both having earned the start in all 21 contests.

Around the ACC, Balogun leads all ACC freshmen in scoring with NC State's Elissa Cunane coming in second, averaging 12.0 ppg. Dixon ranks first in ACC freshmen in rebounding, narrowly outrebounding Florida State's Valencia Myers who has a 6.5 rpg average.

Only two other freshmen in the league (in addition to Balogun and Dixon) have earned the start in all contests - Dara Mabrey (Virginia Tech) and Valencia Myers (Florida State).

## THREE TIMES A CHARM

Elizabeth Balogun picked up her fourth ACC Rookie of the Week accolade on Jan. 21 after helping Tech upset No. 21 Syracuse. The freshman dropped 20 points for her fifth 20-plus point game of the season and has 15 games scoring in double-figures. To open the week, she posted a team-high 23 points on a personal-best six three-pointers at Clemson. Balogun earned her third accolade on Jan. 7 after helping the Jackets go 1-1 to open ACC play. Balogun posted a dominating performance at Boston College for her first collegiate double-double with 18 points and 17 rebounds, and followed with a team-high 14 points against No. 2 Notre Dame.

She picked up second consecutive ACC Rookie of the Week honor after dropping 30 points against Seton Hall in the West Palm Beach Invitational. The freshman posted double-figure scoring numbers in both outings in the tournament to repeat as rookie of the week.

Balogun earned her first weekly award after helping Georgia Tech to a win over Kennesaw State on Dec. 16, Balogun picked up ACC Rookie of the Week honors. Balogun led the Jackets offensively with 15 points, while pulling down a career-best eight rebounds. She was 3-for-5 from three-point range and also recorded a personal-best three blocks.

Tech has collected six ACC Rookie of the Week awards this season as Elizabeth Dixon has earned two Co-Rookie of the Week honors.

## DOUBLE TROUBLE

In Tech's first ACC game of the season, the dynamic freshmen pair of Elizabeth Balogun and Elizabeth Dixon both posted double-doubles. The last time two players recorded double-doubles in the same game was on March 15, 2018 against Bethune Cookman in the WNIT (Lorela Cubaj, Zaire O'Neil).

## TOP 25 POLLS (Jan. 28)

### ASSOCIATED PRESS

- 1 Baylor
- 2 UConn
- 3 **Louisville**
- 4 Oregon
- 5 **Notre Dame**
- 6 Mississippi State
- 7 **NC State**
- 8 Stanford
- 9 Oregon State
- 10 Marquette
- 11 **Maryland**
- 12 Texas
- 13 Iowa
- 14 Utah
- 15 Gonzaga
- 16 South Carolina
- 17 Rutgers
- 18 **Syracuse**
- 19 Kentucky
- 20 Texas A&M
- 21 Arizona State
- 22 Michigan State
- 23 Iowa State
- 24 **Florida State**
- 25 BYU

### USA TODAY COACHES

- 1 Baylor
- 2 UConn
- 3 **Louisville**
- 4 Oregon
- 5 **Notre Dame**
- 6 Mississippi State
- 7 **NC State**
- 8 Stanford
- 9 Marquette
- 10 **Maryland**
- 11 Oregon State
- 12 Iowa
- 13 Gonzaga
- 14 Texas
- 15 Kentucky
- 16 **Syracuse**
- 17 Rutgers
- 18 South Carolina
- 19 Rutgers
- 20 Arizona State
- 21 **Florida State**
- 22 Michigan State
- 23 **Miami**
- 24 Texas A&M
- 25 Iowa State

**Bold = 2018-19 Opponent**

## WINS AGAINST RANKED FOES

Jan. 6, 1987	#13 Maryland	H	81-80 (OT)
Jan. 21, 1989	#13 Virginia	H	105-80
Jan. 2, 1990	#6 NC State	H	79-78
Jan. 18, 1990	#15 Maryland	H	70-68
Jan. 17, 1992	#16 NC State	H	83-72
Feb. 4, 1992	at #18 Clemson	A	59-57
March 7, 1992	vs. #4 Maryland	N	68-67
March 8, 1992	vs. #18 Clemson	N	74-73
Jan. 15, 1993	#15 North Carolina	H	73-63
Jan. 25, 1996	#18 Clemson	H	55-38
Feb. 25, 1996	at #17 Clemson	A	72-62
Jan. 5, 1997	#7 NC State	H	73-72
Feb. 13, 1997	#9 Virginia	H	72-60
Dec. 6, 1997	#9 Virginia	H	84-65
Dec. 5, 1998	at #17/14 NC State	A	74-73
Jan. 24, 1999	#7/6 North Carolina	H	91-84
Jan. 13, 2000	#15/12 North Carolina	H	55-44
Feb. 24, 2000	at #14/11 NC State	A	69-52
March 4, 2000	vs. #15/14 NC State	N	71-62
Jan. 7, 2001	#25 Virginia	H	70-65
Feb. 8, 2001	at #24 Virginia	A	87-70
Jan. 17, 2002	at #17/15 North Carolina	A	81-62
Dec. 27, 2002	vs. #24/22 Georgia	N	55-49
Dec. 3, 2004	#6/6 Georgia	H	55-49
Feb. 1, 2007	#4/4 Maryland	H	77-72
Dec. 3, 2008	#21/24 Michigan St.	H	70-57
Jan. 22, 2009	#2/3 North Carolina	H	66-62
March 1, 2009	#22/19 Virginia	H	74-66
Dec. 5, 2010	#21/22 Georgia	H	69-53
Jan. 6, 2011	#8/8 North Carolina	H	71-70
Feb. 24, 2011	at #13/16 North Carolina	A	64-57
March 4, 2011	vs. #13/15 Maryland	N	70-64
Feb. 12, 2012	at #23/RV North Carolina	A	56-64
March 20, 2012	vs. #17/16 Georgetown	N	76-64
Feb. 6, 2014	#13/11 North Carolina	H	94-91
Feb. 26, 2015	#16/17 Duke	H	71-62
Jan. 15, 2017	#24 Syracuse	H	75-66
Nov. 18, 2018	#14 Georgia	H	63-53
Jan. 20, 2019	#12/12 Syracuse	H	65-55

## JOSEPH VS. THE RANKED

Since MaChelle Joseph took the reigns of the Yellow Jacket program prior to the 2003-04 season, Tech has beaten 15 ranked opponents. All-time, Georgia Tech has 36 wins against AP ranked teams with eight of those coming on the road.

## LAST WIN VS. RANKED OPPONENT

Tech's last win against a ranked opponent came vs. #14 Georgia, 63-53, on Nov. 18, 2018 in McCamish Pavilion. Elizabeth Dixon posted a double-double of 11 rebounds and 10 points and was one of four Yellow Jackets to score in double-figures.

Balogun recorded 18 points to go along with a career-high 17 rebounds. It marked the first game since April 1, 2017 that a Yellow Jacket secured 17 rebounds in a game - Elo Edeferioka did so against Michigan in the WNIT final.

Dixon finished the game with 12 points and 10 rebounds for her third double-double of the season.

Since then, Lorela Cubaj and Elizabeth Dixon recorded double-doubles in the same game against Duke on Jan. 10. Cubaj posted 13 points and 11 rebounds, while Dixon dropped 22 points and 17 rebounds. The last time Tech had two or more games with two Jackets with double-doubles was in the 2016-17 season.

## CUBAJ FOR TWO

In Tech's final non-conference contest of the season, sophomore Lorela Cubaj posted her first double-double of the season, and second of her career. Cubaj tallied the double-double with 13 points and 12 rebounds to led the Jackets on the glass. The Italian native collected her first double-double in her freshman season in postseason play when Tech hosted Bethune-Cookman (17 points, 13 rebounds). For the season, Cubaj is second on the team in rebounding, averaging 6.0 rpg.

Cubaj recorded her second double-double of the season in Tech's win over Duke on Jan. 10. The sophomore posted 13 points and 11 rebounds.

## DROPPING 30

Freshman Elizabeth Balogun dropped a season-best 30 points against Seton Hall in the opening game of the West Palm Beach Invitational on Dec. 20. The 30 points by a freshman marked the first 30-point game since the 2013-14 season when Kaela Davis scored 31 points against Clemson on Jan. 30, 2014. Balogun hit the mark connecting on a personal-best 12 field goals, while also finishing with a season-high four blocks.

## HOME COMFORT

Georgia Tech is 8-2 at home this season with wins over App State, Western Carolina, Georgia, Alabama State, Kennesaw State, Wofford, Duke and Syracuse to date. Through the 10 games, the Jackets average 67.8 points, while limiting their opponents to 53.5 points (a +14.3 scoring margin). The Jackets also outrebound their opponents at home by 7.0 led by a 7.3 rebounds per game average from Elizabeth Dixon. Freshman Elizabeth Balogun leads the team offensively at home with a 16.0 ppg average, while Francesca Pan adds 11.0 ppg.

## ON A ROLE

After missing the first two games of the season due to injury, junior Chanin Scott has made an impact since returning to the hardwood. In a four game stretch, Scott was nearly perfect from the field, shooting 19-of-27 (70.4 percent) and averaged 10.3 points per game. Extending the streak to seven games, she converted 65.0 percent (26-for-40) from the field.

## BREAKOUT OFF THE BENCH

In Tech's win at Georgia State on Dec. 2, freshman D'asia Gregg came off the bench for a breakout performance. The Florence, S.C., native finished with a career-high 15 points, hitting a personal best 8-of-10 free throws, and pulled down a season-high seven rebounds. She took the floor for a career-best 24 minutes, while also recording two assists, a steal and hit her first three-pointer of the season.

## OFF TO A FRESH START

On the young season, freshman Elizabeth Balogun has

## CAREER DOUBLE-DOUBLES

### ELIZABETH BALOGUN - 2

18 pts, 17 rebs. at Boston College - 1/3/19  
13 pts, 10 rebs. at Louisville - 1/13/19

### LORELA CUBAJ - 4

17 pts, 13 rebs vs. Bethune-Cookman - 3/15/18  
13 pts, 12 rebs vs. Wofford - 12/30/18  
13 pts, 11 rebs vs. Duke - 1/10/18  
17 pts, 12 rebs at UNC - 1/31/19

### ELIZABETH DIXON - 4

13 pts, 10 rebs. vs. Western Carolina - 11/14/18  
10 pts 11 rebs. vs. Georgia - 11/18/18  
12 pts, 10 rebs. at Boston College - 1/3/19  
22 pts, 17 rebs vs. Duke - 1/10/18

### KIERRA FLETCHER - 1

11 pts, 14 rebs. vs. Seton Hall - 12/20/18

### MARTINE FORTUNE - 1

10 pts, 10 rebs. vs. Southeastern Louisiana - 11/18/15

### FRANCESCA PAN - 1

11 pts, 10 rebs vs. Syracuse - 1/20/19

### CHANIN SCOTT - 1

13 pts, 11 rebs. vs. Georgia State - 12/3/16

## LARGEST HOME CROWDS

1.	11/21/10	#1/1 UConn	L, 71-51	7,325
2.	2/8/95	#11/11 UNC	L, 84-62	6,621
3.	12/5/08	Georgia	W, 57-42	6,212
4.	2/7/99	#9/11 Duke	L, 74-73	6,058
5.	11/11/12	#20/16 Tenn.	L, 54-71	5,517
6.	1/23/93	#10 Virginia	L, 107-81	4,158
7.	2/21/93	Wake Forest	W, 85-72	4,136
8.	2/16/03	Virginia	L, 56-54	4,044
9.	1/26/02	Clemson	W, 83-78	3,965
10.	12/13/09	MVSU	W, 89-41	3,864
11.	1/20/96	#7/7 Virginia	L, 79-58	3,849
12.	1/8/04	#1/2 Duke	L, 45-77	3,833
13.	2/11/96	Wake Forest	W, 75-65	3,827
14.	2/18/99	#17/17 Virginia	L, 73-86	3,812
15.	1/13/03	#1/1 Duke	L, 59-79	3,592
16.	1/9/00	#14/10 Duke	L, 45-64	3,512
17.	2/27/94	Duke	W, 64-56	3,385
18.	2/10/08	#3/3 UNC	L, 61-75	3,257

gotten off to a strong start, earning the start in all 21 outings. Through the first 21 games, she has scored 342 points for a 16.3 ppg average, connected on 51 three-pointers, pulled down 112 rebounds, swiped 35 steals and dished out 37 assists. In 640 minutes of playing time, she has shot 46.0 percent from the field and leads the team in scoring.

## HITTING A MILESTONE

Junior Francesca Pan reached a feat only few do in their careers in Cancun. The Italian native hit the 1,000-career point mark scoring 18 points against Idaho State. Needing 100 points entering her junior season, she became the 31st player in program history to cross the 1,000-career point plateau. As a freshman, Pan poured in 414 points in 36 games and finished second on the team in scoring to be tabbed the ACC Freshman of the Year. She followed her inaugural season scoring 486 points as a sophomore in 34 games. She reached the milestone in 76 career games.

## A NEW VICTORY CLUB

Georgia Tech's women's basketball head coach MaChelle Joseph hit the 300 career wins mark on Dec. 2, 2018, with a 78-71 victory over Georgia State. Joseph is the program's all-time winningest coach in program history and has led the Jackets to 11 postseason appearances since taking over at the helm of the program, including seven NCAA appearances. Additionally, she has helped lead the Yellow Jackets to 10 20-plus win seasons.

## ACC PRESEASON PREDICTIONS

### 2018-19 Predicted Order of Finish

#### Blue Ribbon Panel

1. Notre Dame (59)
2. Louisville (3)
3. Syracuse
4. NC State
5. Duke
6. Miami
7. Florida State
8. North Carolina
9. Virginia
10. Georgia Tech
11. Virginia Tech
12. Wake Forest
13. Pitt
14. Boston College
15. Clemson

#### Coaches

1. Notre Dame (15)
2. Louisville
3. Syracuse
4. NC State
5. Miami
6. Duke
7. North Carolina
8. Florida State
9. Georgia Tech
10. Virginia Tech
11. Virginia
12. Wake Forest
13. Pitt
14. Clemson
15. Boston College

### Blue Ribbon Panel Preseason Player of the Year

Arike Ogunbowale, Sr., G - Notre Dame

### Coaches Preseason Player of the Year

Arike Ogunbowale, Sr., G - Notre Dame

### 2018-19 Blue Ribbon Panel Preseason All-ACC Team

Asia Durr, Sr., G - Louisville  
Janelle Bailey, So., F - North Carolina  
Paris Kea, Sr., G - North Carolina  
Marina Mabrey, Sr., G - Notre Dame  
Arike Ogunbowale, Sr., G - Notre Dame  
Jessica Shepard, Sr., F - Notre Dame  
Brianna Turner, Gr., F - Notre Dame  
Tiana Mangakahia, Jr., G - Syracuse  
Taylor Emery, Sr., G - Virginia Tech  
Elisa Penna, Jr., G/F - Wake Forest

### 2018-19 Coaches Preseason All-ACC Team

Asia Durr, Sr., G - Louisville  
Janelle Bailey, So., F - North Carolina  
Paris Kea, Sr., G - North Carolina  
Marina Mabrey, Sr., G - Notre Dame  
Arike Ogunbowale, Sr., G - Notre Dame  
Jessica Shepard, Sr., F - Notre Dame  
Brianna Turner, Gr., F - Notre Dame  
Tiana Mangakahia, Jr., G - Syracuse  
Taylor Emery, Sr., G - Virginia Tech  
Elisa Penna, Jr., G/F - Wake Forest

### 2018-19 Blue Ribbon Panel Newcomer Watch List

Kiah Gillespie, r-Jr., F - Florida State  
Elizabeth Balogun, Fr., G - Georgia Tech  
Beatrice Mompremier, r-Jr., F - Miami  
Jordan Nixon, Fr., G - Notre Dame  
Emily Engstler, Fr., G/F - Syracuse

### 2018-19 Coaches Newcomer Watch List

Elizabeth Balogun, Fr., G - Georgia Tech  
Elizabeth Dixon, Fr., F - Georgia Tech  
Beatrice Mompremier, r-Jr., F - Miami  
Jordan Nixon, Fr., G - Notre Dame  
Emily Engstler, Fr., G/F - Syracuse

## GONE TO PARADISE

Georgia Tech took part in the Cancun Challenge over Thanksgiving week in Cancun, Mexico. The Jackets faced George Washington and Idaho State in the tournament, taking home a pair of wins. Junior Francesca Pan was named to the All-Tournament team after scoring a team-best 33 points (16.5 ppg), four assists, two steals, one block and connecting on four three-pointers. Tech made its second appearance in the Yucatan, having previously taken part in the tournament in 2015. In its first appearance, Tech went 1-1.

## 22 SEEING DOUBLE

Freshmen Elizabeth Dixon recorded her first collegiate double-double against Western Carolina with 13 points and 10 rebounds. The last freshman to record a double-double through the first three games of the season was current senior Martine Fortune, who produced 10 points and 10 rebounds against SE Louisiana on Nov. 18, 2015.

The freshman picked up her second double-double against No. 14 Georgia, with 11 rebounds and 10 points. The performance earned her ACC Co-Rookie of the Week honors for the first time in her career.

## IT TAKES TWO

Georgia Tech played through two overtimes at Houston in its season-opener, marking the first double-overtime game since 2008. However, the Jackets played a triple overtime game just over a year ago in the WNIT Championship game against Michigan, falling to the Wolverines. In Friday's season-opener, Tech committed 40 turnovers, marking the third-most turnovers in a game in program history. The last time Tech committed more turnovers in a game dates back to 1979 when the Jackets committed 42 against Valdosta State.

## IN SEASON-OPENERS

The Jackets opened the season at Houston, marking only the fifth time, and second consecutive, the Jackets opened the season on the road under head coach MaChelle Joseph. The Jackets opened on the road in her debut game at Florida Atlantic in 2003-04, at UAB in 2005-06, at Loyola Chicago in 2014-15 and at App State last season. The Jackets are 4-1 in road openers under Joseph and in seasons openers overall since Joseph took over the helm 15 years ago, the Jackets are 14-2. All-time in season openers, Tech is 33-12 since 1974-75.

## YOUTHFUL, BUT TALL

Georgia Tech boasts a young roster with seven freshmen (six true freshmen), but also a tall roster.

### TEAM AVERAGE AGE - National Research

1. UMBC & SMU	19.0
<b>3. Oklahoma &amp; Georgia Tech</b>	<b>19.1</b>
5. Wichita State	19.2
6. Northern Kentucky	19.3
7. Georgia Southern & Old Dominion	19.33
9. Florida State	19.4
10. Duke	19.43
11. Alabama	19.46
12. FAU	19.5
13. Vermont	19.7

*\*Research conducted by FAU to a national question polled to conference SIDs.*

*Results based on responses received.*

### TRUE FRESHMEN - National Research

1. Wichita State & FAU	8
3. Vermont, Oklahoma & SMU	7
<b>6. UMBC, Georgia Tech, ODU &amp; Alabama</b>	<b>6</b>

*\*Research conducted by FAU to a national question polled to conference SIDs.*

*Results based on responses received.*

Of the 13 Jackets on the squad this season, nine are 6'0" or taller. Tech is tied for second with the tallest roster in the

league with Wake Forest. Only Duke has more players listed at 6'0" or taller. Below is a breakdown of rosters by height in the ACC.

### PLAYERS 6'0" OR TALLER - ACC ONLY

1. Duke	10
<b>2. Georgia Tech</b>	<b>9</b>
Wake Forest	9
4. North Carolina	8
Miami	7
NC State	7
Notre Dame	7
Pittsburgh	7
Syracuse	7
10. Virginia	6
11. Louisville	5
12. Boston College	4
Clemson	4
Florida State	4
Virginia Tech	4

## SCORING TO THE FUTURE

Tech returns 48% of its scoring from last season including the team's leading scorer, Francesca Pan who averaged 14.3 points per game as a sophomore. Pan shot 35.1 percent (156-445) from the field last season and went 79-for-242 from three-point range for a 32.6 percent efficiency. The Italian native also led the Jackets from the charity stripe, connecting on a team-best 79 free throws.

## BE ON THE LOOKOUT

Three Yellow Jackets were named to Preseason Watch Lists prior to the official tipoff of the season. Junior Francesca Pan was one of 20 candidates tabbed to the 2019 Cheryl Miller Award watch list by the Naismith Memorial Basketball Hall of Fame and the WBCA. The award recognizes the top small forwards in women's NCAA Division I college basketball.

Tech also placed two freshmen on the ACC preseason Newcomer Watch List. Elizabeth Balogun earned a spot on both the Blue Ribbon Panel's watch list as well as the league's head coaches'. She was joined on the head coaches watch list by teammate Elizabeth Dixon. A pair of McDonald's All-Americans, Balogun and Dixon were two members of Tech's 7th-ranked recruiting class. The pair also competed in the Jordan Brand Classic game in Brooklyn, N.Y. in April. Balogun, the USA Today Tennessee Player of the Year, garnered second team Naismith Trophy National High School All-American Team accolades, while Dixon was tabbed honorable mention.

## WHAT'S NEW?

Even though Tech returns the core of its roster from last season, the Jackets welcomed six newcomers to the squad.

**Elizabeth Balogun** - Attended Hamilton Heights Christian Academy in Chattanooga, Tenn. ...Named 2017 McDonald's All American...Also played in the Jordan Brand Classic game in Brooklyn, N.Y....Named All-USA Tennessee Player of the Year by USA Today...Tabbed to 2017 American Family Insurance All-USA Tennessee Girls Basketball first team...Capped high school career being tabbed Naismith Trophy High School All-American...Ranked as a top 10 recruit by All Star Girls Report at No. 9...Ranked No. 12 recruit by Blue Star and No. 17 by Prospect Nation upon signing.

**Jasmine Carson** - Played two seasons at Memphis Central...Concluded her high school playing career at McEachern...Averaged 17 points and three steals per game as a senior...Named all district all four years of high school...2018 Naismith High School Honorable Mention...Tabbed adidas All-American and 3A AAAAAA All-Region Player of the Year in 2018...Three star ESPN prospect and four-star by Prospect Nation.

**Elizabeth Dixon** - Attended Ridgeway High School in Memphis, Tenn. ...Multi-sport athlete at Ridgeway, competing in basketball and track and field...Two-time all-state, all district

and all region in 2016-17 and 2017-18...Tabbed All USA Tennessee second team by USA Today in 2016-17...Named to the all USA Tennessee first team as a senior by USA Today...2018 Ms. Basketball finalist...Named McDonald's All American and Jordan Brand Classic honoree.

**D'asia Gregg** - Attended Wilson High School...Helped lead Wilson to a S.C. State Finalist Class 4A in 2016-17 and Final Four Class 4A, lower state champion...Tabbed first team all-conference as a junior...Named all-area by Florence Morning News in 2016...Ranked No. 88 by All Star Girls Report, No. 89 by Prospect Nation and No. 99 by Collegiate Girls Basketball Report when signed to Georgia Tech.

**Lotta-Maj Lahtinen** - Attended Mäkelänrinne Sports High in Helsinki, Finland...Member of U19 Finnish Championship team in 2016...Team finished second in 2015...Played with Finnish National Team from 2014-18...Competed in U16 European Championships in 2014 and 2015 with national team...Participated in U18 European Championships in 2016 and 2017...Took part in European qualifiers in 2016-18.

**Kondalia Montgomery** - Attended Lincoln High School in Tacoma, Wash. ...Played for Jamila Jones for four seasons, serving two seasons as team captain...Helped lead team to three consecutive league titles and two district championships...Named league MVP in 2018...Tabbed Defensive Player of the Year in 2016 and 2017...South Ben All-Star Game participant.

## COMPETITION AWAITS

The Yellow Jackets have a competitive 2018-19 schedule ahead of them as they are set to face 16 teams that reached postseason play last season, 10 from the ACC. Twelve teams reached the NCAA Tournament last season including Georgia, George Washington, Maryland and Dayton in non-conference action, and Duke, Florida State, Louisville, Miami, NC State, Notre Dame, Syracuse and Virginia in league play. Three teams competed in the WNIT: Houston, Seton Hall and Virginia Tech.

## ACC PREDICTIONS

In the ACC Preseason polls, Georgia Tech was picked to finish ninth by the league's head coaches and 10th by the Blue Ribbon Panel. Notre Dame was the preseason favorite in both polls. Freshmen Elizabeth Balogun and Elizabeth Dixon were named to the Preseason Newcomer Watch List.

## HOME SWEET HOME

All time, the Yellow Jackets are 363-211 (.620) when playing at home. Under Joseph's direction, Georgia Tech has gone 181-63 (.735) playing on The Flats.

## ALL OVER THE WORLD

Georgia Tech's roster boasts players from seven different states and four different countries. Junior Francesca Pan (Bassano del Grappa, Italy), sophomores Anne Francoise Diouf (Dakar, Senegal), Lorela Cubaj (Terni, Italy), and freshmen Elizabeth Balogun (Lagos, Nigeria) and Lotta-Maj Lahtinen (Helsinki, Finland) are Georgia Tech's five international student-athletes.

This past summer, Tech had two student-athletes representing their home countries on their National Teams. Junior Francesca Pan and sophomore Lorela Cubaj both competed for the Italian National Team. Pan competed with the Senior National Team for the first time, while Cubaj saw action in the FIBA U20 Women's European Championship.

Two summers ago, Pan represented Italy in the 2016 U20 European Championships, helping her country to a second-place finish.

## HOW DO YOU SAY...

Between Tech's five international players, several different languages are spoken. Check out who can speak what languages below:

**Francesca Pan** (Bassano del Grappa, Italy) - Italian, Spanish, English

**Lorela Cubaj** (Terni, Italy) - Italian, English, Spanish, Albanian

**Lotta-Maj Lahtinen** (Helsinki, Finland) - Finnish, English, Swedish, Russian

# LAST GAME - at NORTH CAROLINA, JAN. 31, 2019

OFFICIAL BASKETBALL BOX SCORE  
Georgia Tech vs North Carolina  
Thu, Jan 31, 2019 7:00 PM Carmichael Arena

Final

Georgia Tech 13-8, 3-5 ACC

No	Name		Total FG FGA	3-Pt FG FGA	FT FTA	Rebounds OF DF TOT	PF TP	A TO BLK S	MIN
13	Cubaj, Lorela	f	8 11	0 0	1 2	5 7 12	4 17	1 3 0 0	34
22	Dixon, Elizabeth	f	2 10	0 0	2 4	5 2 7	0 6	1 1 1 0	29
02	Carson, Jasmine	g	0 3	0 3	0 0	0 0 0	2 0	1 0 0 1	6
05	Balogun, Elizabeth	g	11 20	6 12	7 9	2 3 5	1 35	5 3 0 3	40
41	Fletcher, Kierra	g	4 7	0 0	0 0	0 3 3	4 8	0 1 0 0	21
23	Gregg, D'asia		0 0	0 0	0 0	0 0 0	3 0	0 0 0 0	10
33	Pan, Francesca		0 2	0 2	0 0	0 0 0	1 0	1 0 0 0	5
24	Scott, Chanin (0:01)		4 7	0 0	2 2	2 2 4	5 10	1 4 1 1	29
31	Lahtinen, Lotta-Maj		4 8	0 1	6 6	3 2 5	4 14	4 3 0 0	24
04	Diouf, Anne		0 0	0 0	0 0	0 1 1	0 0	0 0 0 0	2
Team						2 0 2	0	1	
Totals			33 68	6 18	18 23	19 20 39	24 90	14 16 2 5	200
Total FG%			1st Half: 14-34 (41.2)	2nd: 19-34 (55.9)	Game: 33-68 (48.5)			Deadball	
3 PT FG%			1st Half: 2-8 (25.0)	2nd: 4-10 (40.0)	Game: 6-18 (33.3)			Rebounds	
FT%			1st Half: 7-10 (70.0)	2nd: 11-13 (84.6)	Game: 18-23 (78.3)			8	

North Carolina 13-9, 4-4 ACC

No	Name		Total FG FGA	3-Pt FG FGA	FT FTA	Rebounds OF DF TOT	PF TP	A TO BLK S	MIN
44	Bailey, Janelle	c	7 12	0 0	6 8	2 4 6	3 20	1 4 1 2	39
01	Koenen, Taylor	g	3 9	2 4	0 0	1 2 3	3 8	2 2 0 1	38
05	Watts, Stephanie (0:02)	g	5 14	4 11	4 7	3 4 7	5 18	5 2 0 3	39
22	Kea, Paris	g	9 16	3 6	8 11	0 2 2	4 29	6 1 0 0	38
00	Bennett, Shayla	g	3 4	3 4	1 2	0 0 0	4 10	0 1 0 1	27
20	Church, Leah		2 3	2 3	0 0	0 0 0	3 6	2 0 0 1	16
04	Jones, Jocelyn		0 1	0 0	0 0	1 0 1	1 0	0 1 0 0	3
Team						3 2 5	0	1	
Totals			29 59	14 28	19 28	10 14 24	23 91	16 12 1 8	200
Total FG%			1st Half: 17-36 (47.2)	2nd: 12-23 (52.2)	Game: 29-59 (49.2)			Deadball	
3 PT FG%			1st Half: 9-17 (52.9)	2nd: 5-11 (45.5)	Game: 14-28 (50.0)			Rebounds	
FT%			1st Half: 5-7 (71.4)	2nd: 14-21 (66.7)	Game: 19-28 (67.9)			8	

Officials: Luis Gonzalez, Kevin Dillard, Kevin Sparrock

Technical: Georgia Tech -None North Carolina -None

Attendance: 1954

Scoring By Periods	1	2	3	4	Total
Georgia Tech	15	22	25	28	90
North Carolina	24	24	17	26	91

Notes: Attendance based on tickets distributed

## Other Stats

	NC	GT		
Biggest Lead (first time - number of times)	14 (P-2:10-2)	1 (P-4:05-1)	Number Of Ties	1
Shots In The Paint	9/19 = 18 Pts	21/35 = 42 Pts	Number Of Lead Changes	2
Points Off Turnovers	25	11		
Points Off Offensive Rebounds	16	20		
Fast Break Points	4	10		
1st Shot of Bonus FT	00	00		
Longest FG Drought (Period-Times)	4:20 (P-3:10:00-5:40)	2:54 (P-3:10:00-7:06)		
Bench Points	6	24		

VSBasketball-Licensed to: University of North Carolina

## RECORD WHEN...

At home .....	8-2
On road .....	2-5
Neutral .....	3-1
Against ranked teams .....	2-5
In games decided by 3 pts or less .....	0-1
In games decided by 4-5 pts .....	1-0
In games decided by 6-10 pts .....	5-3
In games decided by 11-20 pts .....	2-3
In games decided by 21+ pts .....	5-1
Leading at half .....	12-1
Tied at half .....	0-0
Trailing at half .....	1-7
Leading with 10:00 remaining .....	12-0
Trailing with 10:00 remaining .....	1-8
Leading with 5:00 remaining .....	13-1
Trailing with 5:00 remaining .....	0-7
GT shoots 40% or better .....	9-2
GT shoots less than 40% .....	4-6
GT shoots same/better than opp .....	9-2
Opp. shoots 40% or better .....	5-6
Opp. shoots less than 40% .....	8-2
GT out-rebounds opp .....	11-3
Opp. out-rebounds GT .....	1-5
Teams tied in rebounding .....	1-0
GT shoots 70% or better on FT's .....	7-2
GT has more/same FT attempts .....	9-0
Opp. has more FT attempts .....	4-8
GT shoots 30% or better on 3pt .....	9-5
GT shoots less than 30% on 3pt .....	4-3
Opp. shoots 30% or better on 3pt .....	4-4
Opp. shoots less than 30% on 3pt .....	9-4
GT has more/same TO than opp .....	3-6
GT scores 90+ pts .....	0-1
GT scores 80-89 pts .....	4-1
GT scores 70-79 pts .....	5-0
GT scores 60-69 pts .....	4-3
GT scores 50-59 pts .....	0-2
GT scores less than 50 pts .....	0-1
Opp. scores 90+ pts .....	0-2
Opp. scores 80-89 pts .....	0-1
Opp. scores 70-79 pts .....	3-2
Opp. scores 60-69 pts .....	1-3
Opp. scores 50-59 pts .....	5-0
Opp. scores less than 50 pts .....	4-0
On Mondays .....	0-0
On Tuesdays .....	0-0
On Wednesdays .....	2-0
On Thursdays .....	4-3
On Fridays .....	1-2
On Saturdays .....	0-0
On Sundays .....	6-3
In November .....	5-2
In December .....	5-1
In January .....	3-5
In February .....	0-0
In March .....	0-0
In Overtime .....	0-1

## THE LAST TIME...

### The Last Time (Team)

Tech scored 100 points in a game: .....	102 vs. Southeastern Louisiana, November 18, 2015
Tech scored 100 points in an ACC game: .....	101 at Virginia, March 2, 2008 (2 OT)
A Tech opponent scored 100 points: .....	103 at Virginia, March 2, 2008 (2 OT)
Tech scored 60-69 points in a half: .....	60 vs. Morgan State, Nov. 16, 2014
Tech scored 70+ points in a half: .....	70 vs. Presbyterian (2nd half), Dec. 2, 1985
Tech won an overtime game: .....	vs. Wake Forest (89-82), Jan. 31, 2013
<b>Tech lost an overtime game: .....</b>	<b>at Houston (95-89), Nov. 9, 2018</b>
<b>Tech played a double overtime game: .....</b>	<b>at Houston (95-89), Nov. 9, 2018</b>
Tech played a triple overtime game: .....	vs. Michigan (89-79), April 1, 2017
<b>Tech shot 70 percent for a half: .....</b>	<b>76.9 (20-26) at Houston, Nov. 9, 2018</b>
Tech shot 80 percent for a half: .....	Never
Tech shot 60 percent from the field in a game: .....	63.5 (40-63) vs. Kennesaw State, Nov. 22, 2011
Tech shot 90 percent from the free throw line in a game (min. 10 att.): .....	92.3 (12-13), Boston College, Feb. 8, 2018
Tech shot 100 percent from the free throw line in a game (min. 10 att.): .....	1.000 (14-14), Virginia, Jan. 25, 2015
<b>Tech shot less than 40 percent from the field in a game: .....</b>	<b>34.4 (22-64) vs. NC State, Jan. 27, 2019</b>
<b>Tech shot less than 30 percent from the field in a half: .....</b>	<b>24.3 (9-37) at No. 2 Louisville, Jan. 13, 2019</b>
<b>Tech shot less than 50 percent from the free throw line in a game: .....</b>	<b>37.5 (3-8) vs. Kennesaw State, Dec. 16, 2018</b>
<b>Opponent shot less than 50 percent from the free throw line in a game: .....</b>	<b>42.9 (3-7), vs. Duke, Jan. 10, 2019</b>
Tech did not make a 3-point field goal: .....	vs. Virginia, Jan. 28, 2018
<b>Tech held an opponent under 30 percent shooting: .....</b>	<b>23.9 (16-67), vs. Syracuse, Jan. 20, 2019</b>
An opponent shot 60 percent: .....	62.3 (33-53) vs. Notre Dame, Jan. 7, 2018
Tech attempted 50 free throws: .....	51 (made 34) vs. Alabama State, Nov. 24, 2015
Tech made 40 free throws: .....	Never
Tech defeated a top-10 opponent: .....	No. 8/8 North Carolina, 71-70, Jan. 6, 2011
<b>Tech defeated a top-25 opponent: .....</b>	<b>No. 12 Syracuse, 65-55, Jan. 20, 2019</b>
Tech defeated a top-25 opponent on the road: .....	No. 23/RV North Carolina, 56-54, Feb. 12, 2012

### The Last Time (Player)

A player scored 40+ points: .....	Niesha Butler (40) vs. Florida State, Jan. 2, 1999
<b>A player scored 35-39 points: .....</b>	<b>Elizabeth Balogun (35) at North Carolina, Jan. 31, 2019</b>
<b>A player scored 30-34 points: .....</b>	<b>Elizabeth Balogun (30) vs. Seton Hall, Dec. 20, 2018</b>
<b>Two players scored 20+/same game: .....</b>	<b>Kierra Fletcher (22) &amp; Elizabeth Balogun (20) vs. Syracuse, Jan. 20, 2019</b>
Three players scored 20+/same game: .....	Alex Montgomery (26), Janie Mitchell (20) and Iasia Hemingway (20) vs. Maryland, Jan. 20, 2008
Four players scored 20+/same game: .....	Never
A player had back-to-back 30+ point games: .....	Carla Munnion (34) vs. Manhattan, Jan. 23, 1995, and (35) vs. Chattanooga, Dec. 13, 1995
A player had 20+ rebounds: .....	Kisha Ford (21) vs. Mercer, Nov. 25, 1996
<b>A player had 15-19 rebounds: .....</b>	<b>Elizabeth Dixon (17) vs. Duke, Jan. 10, 2019</b>
<b>Two players had a double-double: .....</b>	<b>E. Dixon (22 pts, 17 rebs) and L. Cubaj (13 pts, 11 rebs) vs. Duke, Jan. 10, 2019</b>
<b>Two players had double-figure rebounds in the same game: ..</b>	<b>Cubaj (10 rebs) and Balogun (10 rebs) at Louisville, Jan. 13, 2019</b>
Three players had double-figure rebounds in the same game: .....	Roddreka Rogers (12), Katarina Vuckovic (12) and Zaire O'Neil (11), NC State, Feb. 12, 2015
One player had a double-double (Pts and Ast): .....	Aaliyah Whiteside (14 pts, 11 asts) vs. Prairie View A&M, Dec. 15, 2015
One player had a double-double (Pts and Steals): .....	Dawnn Maye (23 pts, 10 steals) vs. Marquette, Nov. 18, 2012
<b>A player had a double-double in consecutive games: .....</b>	<b>Elizabeth Dixon - vs. Western Carolina, Nov. 14, 2018 (13 pts, 10 rebs.) vs. Georgia, Nov. 18, 2018 (10 pts, 11 rebs.)</b>
A player had a triple-double (Pts, Reb, Asst): .....	Milli Martinez (12 pts, 10 reb, 10 asst) vs. Morris Brown, Feb. 23, 2002
A player had 20 points and 20 rebounds in the same game: .....	Kisha Ford (21 pts, 21 reb) vs. Mercer, Nov. 25, 1996
A player had 10-14 assists in a game: .....	Aaliyah Whiteside (11) vs. Prairie View A&M, Dec. 15, 2015
A player had 15+ assists in a game: .....	Nina Bärlin (17) vs. Virginia, Jan. 10, 2002
A player had 10+ assists in three consecutive games: .....	Nina Bärlin (11) vs. E. Washington, Nov. 24, 2001, (14) vs. Arkansas St., Dec. 1, 2001, (11) vs. Southern, Dec. 2, 2001, (13) vs. Florida State, Dec. 5, 2001
<b>A player topped the team in scoring, rebounds, and assists for a game: ..</b>	<b>Elizabeth Dixon, 18 pts, 9 reb, 3 ast vs. ISU, Nov. 23, 2018</b>
<b>A player played every minute of a game: .....</b>	<b>Elizabeth Balogun at North Carolina, Jan. 31, 2019</b>
<b>A player had five blocked shots in a game: .....</b>	<b>Elizabeth Balogun (6) vs. Syracuse, Jan. 20, 2019</b>
A player had five blocked shots in back-to-back games: .....	Zaire O'Neil (5) vs. Syracuse, Feb. 8, 2015 (6) vs. NC State, Feb. 12, 2015
A player had 10+ steals in a game: .....	Dawnn Maye (10) vs. Marquette, Nov. 18, 2012

## STARTING LINEUPS

Game		F	F/G	G/F	G	G
N9	at Houston	Cubaj	Dixon	Balogun	Pan	Fletcher
N11	App State	Cubaj	Dixon	Balogun	Pan	Fletcher
N14	Western Carolina	Cubaj	Dixon	Balogun	Pan	Fletcher
N18	Georgia	Cubaj	Dixon	Balogun	Pan	Fletcher
N22	vs. George Washington	Cubaj	Dixon	Balogun	Pan	Fletcher
N23	vs. Idaho State	Cubaj	Dixon	Balogun	Pan	Fletcher
N29	at Maryland	Cubaj	Dixon	Balogun	Pan	Fletcher
D2	at Georgia State	Cubaj	Dixon	Balogun	Pan	Fletcher
D5	Alabama State	Cubaj	Dixon	Balogun	Pan	Fletcher
D16	Kennesaw State	Cubaj	Dixon	Balogun	Pan	Fletcher
D20	vs. Seton Hall	Cubaj	Dixon	Balogun	Pan	Fletcher
D21	vs. Dayton	Cubaj	Dixon	Balogun	Pan	Fletcher
D30	Wofford	Cubaj	Dixon	Balogun	Pan	Fletcher
J3	at Boston College	Cubaj	Dixon	Balogun	Pan	Fletcher
J6	Notre Dame	Cubaj	Dixon	Balogun	Pan	Fletcher
J10	Duke	Cubaj	Dixon	Balogun	Pan	Fletcher
J13	at Louisville	Cubaj	Dixon	Balogun	Pan	Fletcher
J17	at Clemson	Cubaj	Dixon	Balogun	Pan	Fletcher
J20	Syracuse	Cubaj	Dixon	Balogun	Lahtinen	Fletcher
J27	NC State	Cubaj	Dixon	Balogun	Lahtinen	Fletcher
J31	at North Carolina	Cubaj	Dixon	Balogun	Carson	Fletcher

## SPECIALTY STATS (GT/Opp)

Game		Paint	Off TO	2ndCh	FBreak	Bench
N9	at Houston	48/38	16/39	16/17	13/20	5/16
N11	App State	16/30	7/21	11/16	14/12	13/11
N14	Western Carolina	32/14	31/6	22/10	21/6	38/18
N18	Georgia	34/32	18/16	13/10	12/8	11/21
N22	vs. George Washington	44/12	23/11	15/11	17/0	16/11
N23	vs. Idaho State	30/18	23/5	14/7	6/4	31/17
N29	at Maryland	28/26	17/12	3/7	8/24	8/7
D2	at Georgia State	36/26	29/14	16/8	8/18	35/16
D5	Alabama State	40/24	30/2	20/4	24/5	23/13
D16	Kennesaw State	30/10	16/8	19/9	10/16	19/3
D20	vs. Seton Hall	40/32	13/14	20/9	5/4	14/15
D21	vs. Dayton	40/12	10/21	18/10	2/6	17/22
D30	Wofford	38/18	14/11	24/3	13/7	18/17
J3	at Boston College	42/42	20/22	18/7	24/14	15/18
J6	Notre Dame	20/60	13/33	9/13	9/24	5/12
J10	Duke	36/36	14/15	14/12	12/16	5/10
J13	at Louisville	22/26	14/23	15/2	0/10	14/13
J17	at Clemson	12/38	20/25	14/14	2/10	12/24
J20	Syracuse	28/12	20/11	3/9	19/14	13/17
J27	NC State	18/22	13/8	7/3	5/2	13/20
J31	at North Carolina	42/18	11/25	20/16	10/4	24/6

# 2018-19 GEORGIA TECH STATISTICS

## THE STAT CREW SYSTEM

### Georgia Tech Combined Team Statistics (as of Jan 31, 2019)

#### All games

RECORD:	OVERALL	HOME	AWAY	NEUTRAL
ALL GAMES	13-8	8-2	2-5	3-1
CONFERENCE	3-5	2-2	1-3	0-0
NON-CONFERENCE	10-3	6-0	1-2	3-1

##	Player	gp-gs	min	avg	Total		3-Point		F-Throw		Rebounds				pf	dq	a	to	blk	stl	pts	avg
					fg-fga	fg%	3fg-fga	3fg%	ft-fa	ft%	off	def	tot	avg								
05	Balogun, Elizabeth	21-21	640	30.5	128-278	.460	51-128	.398	35-52	.673	42	70	112	5.3	52	3	37	41	26	35	342	16.3
33	Pan, Francesca	21-18	641	30.5	89-263	.338	41-133	.308	29-35	.829	12	78	90	4.3	50	3	34	53	8	41	248	11.8
22	Dixon, Elizabeth	21-21	533	25.4	80-153	.523	0-0	.000	44-65	.677	72	69	141	6.7	55	3	21	52	23	13	204	9.7
41	Fletcher, Kierra	21-21	657	31.3	66-169	.391	0-1	.000	64-90	.711	42	75	117	5.6	57	1	54	55	3	37	196	9.3
13	Cubaj, Lorela	21-21	567	27.0	65-154	.422	1-3	.333	20-43	.465	48	97	145	6.9	71	2	38	51	22	27	151	7.2
24	Scott, Chanin	19-0	348	18.3	48-100	.480	0-4	.000	15-24	.625	30	33	63	3.3	39	1	20	33	1	20	111	5.8
31	Lahtinen, Lotta-Maj	21-2	388	18.5	37-101	.366	9-26	.346	16-22	.727	20	20	40	1.9	46	3	45	41	1	31	99	4.7
23	Gregg, D'asia	15-0	110	7.3	15-35	.429	5-11	.455	11-16	.688	11	10	21	1.4	11	0	4	10	0	5	46	3.1
00	Jefferson, Daijah	16-0	152	9.5	13-53	.245	7-30	.233	5-8	.625	7	9	16	1.0	12	0	3	15	1	4	38	2.4
04	Diouf, Anne	19-0	145	7.6	5-22	.227	0-0	.000	9-12	.750	13	23	36	1.9	14	0	3	12	4	6	19	1.0
02	Carson, Jasmine	13-1	47	3.6	3-25	.120	3-17	.176	2-2	1.000	0	0	0	0.0	5	0	2	3	0	2	11	0.8
44	Fortune, Martine	7-0	13	1.9	1-5	.200	0-0	.000	0-0	.000	2	5	7	1.0	1	0	0	1	1	1	2	0.3
12	Montgomery, Kondalia	7-0	13	1.9	1-3	.333	0-0	.000	0-0	.000	1	2	3	0.4	5	0	1	0	0	0	2	0.3
Team											42	42	84		1			9				
Total.....		21	4254		551-1361	.405	117-353	.331	250-369	.678	342	533	875	41.7	419	16	262	376	90	222	1469	70.0
Opponents.....		21	4251		473-1220	.388	134-463	.289	251-380	.661	247	484	731	34.8	387	-	315	411	66	163	1331	63.4

TEAM STATISTICS	GT	OPP	Date	Opponent	Score	Att.
SCORING	1469	1331	11/09/18	at Houston	Lo2 89-95	791
Points per game	70.0	63.4	11/11/18	APPALACHIAN ST.	w 71-53	887
Scoring margin	+6.6	-	11/14/18	WESTERN CARO.	w 84-49	730
FIELD GOALS-ATT	551-1361	473-1220	11/18/18	NO. 14 GEORGIA	w 63-53	2407
Field goal pct	.405	.388	11/22/18	vs GEORGE WASHINGTON	w 70-55	300
3 POINT FG-ATT	117-353	134-463	11/23/18	vs IDAHO STATE	w 74-51	300
3-point FG pct	.331	.289	11/29/18	at No. 7 Maryland	L 54-67	4108
3-pt FG made per game	5.6	6.4	12/2/18	at GSU	w 78-71	797
FREE THROWS-ATT	250-369	251-380	12/05/18	ALABAMA ST.	w 69-42	800
Free throw pct	.678	.661	12/16/18	KENNESAW ST.	w 60-35	1014
F-Throws made per game	11.9	12.0	12/20/18	vs Seton Hall	w 84-73	123
REBOUNDS	875	731	12/21/18	vs DAYTON	L 66-85	178
Rebounds per game	41.7	34.8	12/30/18	WOFFORD	w 81-40	1165
Rebounding margin	+6.9	-	* 01/03/19	at Boston College	w 81-76	1254
ASSISTS	262	315	* 01/06/19	NO. 2 NOTRE DAME	L 55-76	3209
Assists per game	12.5	15.0	* 01/10/19	DUKE	w 70-64	1485
TURNOVERS	376	411	* 01/13/19	at No. 2 Louisville	L 44-61	10514
Turnovers per game	17.9	19.6	* 1/17/19	at Clemson	L 61-71	675
Turnover margin	+1.7	-	* 01/20/19	NO. 12 SYRACUSE	w 65-55	2106
Assist/turnover ratio	0.7	0.8	* 1/27/19	NO. 8 NC STATE	L 60-68	2014
STEALS	222	163	* 01/31/19	at North Carolina	L 90-91	1954
Steals per game	10.6	7.8				
BLOCKS	90	66				
Blocks per game	4.3	3.1				
ATTENDANCE	15817	20994				
Home games-Avg/Game	10-1582	7-2870				
Neutral site-Avg/Game	-	4-225				

\* = Conference game

Score by Periods	1st	2nd	3rd	4th	OT	OT2	Totals
Georgia Tech	339	331	405	377	9	8	1469
Opponents	287	326	328	367	9	14	1331

# 2018-19 GEORGIA TECH ACC STATISTICS

## THE STAT CREW SYSTEM

### Georgia Tech Combined Team Statistics (as of Jan 31, 2019) Conference games only

RECORD:	OVERALL	HOME	AWAY	NEUTRAL
ALL GAMES	3-5	2-2	1-3	0-0
CONFERENCE	3-5	2-2	1-3	0-0
NON-CONFERENCE	0-0	0-0	0-0	0-0

##	Player	gp-gs	min	avg	Total		3-Point		F-Throw		Rebounds				pf	dq	a	to	blk	stl	pts	avg
					fg-fga	fg%	3fg-fga	3fg%	ft-fga	ft%	off	def	tot	avg								
05	Balogun, Elizabeth	8-8	257	32.1	54-120	.450	27-62	.435	18-26	.692	17	37	54	6.8	20	1	13	19	8	14	153	19.1
41	Fletcher, Kierra	8-8	270	33.8	27-80	.338	0-0	.000	33-40	.825	16	29	45	5.6	22	0	28	24	0	10	87	10.9
22	Dixon, Elizabeth	8-8	207	25.9	28-59	.475	0-0	.000	17-25	.680	26	30	56	7.0	17	0	7	16	8	1	73	9.1
13	Cubaj, Lorela	8-8	236	29.5	28-66	.424	0-1	.000	12-28	.429	31	36	67	8.4	30	2	14	22	6	9	68	8.5
33	Pan, Francesca	8-5	219	27.4	23-79	.291	11-42	.262	6-8	.750	3	18	21	2.6	19	1	11	13	2	9	63	7.9
31	Lahtinen, Lotta-Maj	8-2	168	21.0	15-47	.319	5-14	.357	9-10	.900	7	11	18	2.3	18	1	14	17	1	9	44	5.5
24	Scott, Chanin	8-0	152	19.0	12-31	.387	0-1	.000	4-6	.667	14	15	29	3.6	18	1	9	18	1	5	28	3.5
02	Carson, Jasmine	3-1	13	4.3	1-8	.125	1-6	.167	0-0	.000	0	0	0	0.0	3	0	1	1	0	2	3	1.0
23	Gregg, D'asia	5-0	21	4.2	1-1	1.000	0-0	.000	1-2	.500	0	1	1	0.2	6	0	0	4	0	1	3	0.6
04	Diouf, Anne	7-0	40	5.7	2-8	.250	0-0	.000	0-0	.000	3	7	10	1.4	2	0	1	3	2	2	4	0.6
44	Fortune, Martine	1-0	3	3.0	0-1	.000	0-0	.000	0-0	.000	1	0	1	1.0	0	0	0	0	0	1	0	0.0
00	Jefferson, Daijah	4-0	15	3.8	0-4	.000	0-3	.000	0-0	.000	1	0	1	0.3	0	0	0	1	0	0	0	0.0
Team											9	15	24				6					
Total.....		8	1601		191-504	.379	44-129	.341	100-145	.690	128	199	327	40.9	155	6	98	144	28	63	526	65.8
Opponents.....		8	1600		206-482	.427	57-183	.311	93-137	.679	79	191	270	33.8	155	-	146	126	25	59	562	70.2

TEAM STATISTICS	GT	OPP	Date	Opponent	Score	Att.
SCORING	526	562	* 01/03/19	at Boston College	w 81-76	1254
Points per game	65.8	70.2	* 01/06/19	NO. 2 NOTRE DAME	L 55-76	3209
Scoring margin	-4.5	-	* 01/10/19	DUKE	w 70-64	1485
FIELD GOALS-ATT	191-504	206-482	* 01/13/19	at No. 2 Louisville	L 44-61	10514
Field goal pct	.379	.427	* 1/17/19	at Clemson	L 61-71	675
3 POINT FG-ATT	44-129	57-183	* 01/20/19	NO. 12 SYRACUSE	w 65-55	2106
3-point FG pct	.341	.311	* 1/27/19	NO. 8 NC STATE	L 60-68	2014
3-pt FG made per game	5.5	7.1	* 01/31/19	at North Carolina	L 90-91	1954
FREE THROWS-ATT	100-145	93-137	* = Conference game			
Free throw pct	.690	.679				
F-Throws made per game	12.5	11.6				
REBOUNDS	327	270				
Rebounds per game	40.9	33.8				
Rebounding margin	+7.1	-				
ASSISTS	98	146				
Assists per game	12.3	18.3				
TURNOVERS	144	126				
Turnovers per game	18.0	15.8				
Turnover margin	-2.2	-				
Assist/turnover ratio	0.7	1.2				
STEALS	63	59				
Steals per game	7.9	7.4				
BLOCKS	28	25				
Blocks per game	3.5	3.1				
ATTENDANCE	8814	14397				
Home games-Avg/Game	4-2204	4-3599				
Neutral site-Avg/Game	-	0-0				

Score by Periods	1st	2nd	3rd	4th	Totals
Georgia Tech	124	111	145	146	526
Opponents	136	146	128	152	562

## 2018-19 GEORGIA TECH GAME HIGHS

## TEAM

POINTS	90	at North Carolina (01/31/19)
	89	at Houston (11/09/18)
	84	vs Seton Hall (12/20/18)
	84	WESTERN CARO. (11/14/18)
	81	at Boston College (01/03/19)
	81	WOFFORD (12/30/18)
FIELD GOALS MADE	38	at Houston (11/09/18)
	33	at North Carolina (01/31/19)
	33	vs Seton Hall (12/20/18)
FIELD GOAL ATTEMPTS	77	ALABAMA ST. (12/05/18)
	74	WESTERN CARO. (11/14/18)
FIELD GOAL PERCENTAGE	.576 (38-66)	at Houston (11/09/18)
	.485 (33-68)	at North Carolina (01/31/19)
	.485 (33-68)	vs Seton Hall (12/20/18)
3 PT FIELD GOALS MADE	11	WESTERN CARO. (11/14/18)
	9	at Clemson (11/17/19)
3 PT FG ATTEMPTS	28	WESTERN CARO. (11/14/18)
	24	ALABAMA ST. (12/05/18)
3 PT FG PERCENTAGE	.467 (7-15)	vs Seton Hall (12/20/18)
	.455 (5-11)	at Houston (11/09/18)
FREE THROWS MADE	24	vs IDAHO STATE (11/23/18)
	20	at GSU (12/2/18)
FREE THROW ATTEMPTS	29	vs IDAHO STATE (11/23/18)
	24	at Boston College (01/03/19)
	24	at GSU (12/2/18)
FREE THROW PERCENTAGE	.833 (20-24)	at GSU (12/2/18)
	.828 (24-29)	vs IDAHO STATE (11/23/18)
REBOUNDS	58	WOFFORD (12/30/18)
	55	at Boston College (01/03/19)
ASSISTS	20	WOFFORD (12/30/18)
	19	DUKE (01/10/19)
STEALS	18	WESTERN CARO. (11/14/18)
	15	KENNESAW ST. (12/16/18)
	15	ALABAMA ST. (12/05/18)
BLOCKED SHOTS	9	NO. 12 SYRACUSE (01/20/19)
	8	vs Seton Hall (12/20/18)
TURNOVERS	40	at Houston (11/09/18)
	25	at GSU (12/2/18)
FOULS	30	vs DAYTON (12/21/18)
	29	at Houston (11/09/18)

## INDIVIDUAL

Points	35	Balogun, Elizabeth at North Carolina (01/31/19)
	30	Balogun, Elizabeth vs Seton Hall (12/20/18)
	25	Fletcher, Kierra at Houston (11/09/18)
	24	Balogun, Elizabeth vs Wofford (12/30/18)
	23	Balogun, Elizabeth at Clemson (11/17/19)
Field Goals Made	12	Balogun, Elizabeth vs Seton Hall (12/20/18)
	11	Balogun, Elizabeth at North Carolina (01/31/19)
Field Goal Att.	21	Pan, Francesca vs DAYTON (12/21/18)
	21	Balogun, Elizabeth vs Seton Hall (12/20/18)
FG Pct (min 5 made)	1.000 (8-8)	Dixon, Elizabeth vs IDAHO STATE (11/23/18)
	1.000 (5-5)	Dixon, Elizabeth vs GEORGE WASHINGTON (11/22/18)
3-Point FG Made	6	Balogun, Elizabeth at North Carolina (01/31/19)
	6	Balogun, Elizabeth at Clemson (11/17/19)
3-Point FG Att.	12	Balogun, Elizabeth at North Carolina (01/31/19)
	12	Balogun, Elizabeth at Clemson (11/17/19)
3-Pt FG Pct (min 2 made)	1.000 (2-2)	Gregg, D'asia vs Seton Hall (12/20/18)
	.667 (2-3)	Lahtinen, Lotta-Maj at Clemson (11/17/19)
	.667 (2-3)	Balogun, Elizabeth at Boston College (01/03/19)
	.667 (2-3)	Gregg, D'asia vs Wofford (12/30/18)
	.667 (2-3)	Carson, Jasmine vs Western Caro. (11/14/18)
Free Throws Made	10	Fletcher, Kierra vs No. 12 Syracuse (01/20/19)
	8	Fletcher, Kierra at Boston College (01/03/19)
	8	Gregg, D'asia at GSU (12/2/18)
Free Throw Att.	11	Fletcher, Kierra vs No. 12 Syracuse (01/20/19)
	11	Cubaj, Lorela vs Duke (01/10/19)
	11	Fletcher, Kierra at Houston (11/09/18)
FT Pct (min 3 made)	1.000 (8-8)	Fletcher, Kierra at Boston College (01/03/19)
	1.000 (6-6)	Lahtinen, Lotta-Maj at North Carolina (01/31/19)
	1.000 (5-5)	Dixon, Elizabeth vs Western Caro. (11/14/18)
	1.000 (4-4)	Pan, Francesca at GSU (12/2/18)
	1.000 (4-4)	Lahtinen, Lotta-Maj at GSU (12/2/18)
	1.000 (4-4)	Fletcher, Kierra at No. 7 Maryland (11/29/18)
	1.000 (4-4)	Diouf, Anne vs IDAHO STATE (11/23/18)
	1.000 (4-4)	Fletcher, Kierra vs IDAHO STATE (11/23/18)
	1.000 (4-4)	Pan, Francesca vs No. 14 Georgia (11/18/18)
	1.000 (3-3)	Dixon, Elizabeth vs Appalachian St. (11/11/18)
	1.000 (3-3)	Balogun, Elizabeth vs Seton Hall (12/20/18)
	1.000 (3-3)	Balogun, Elizabeth vs GEORGE WASHINGTON (11/22/18)
	1.000 (3-3)	Pan, Francesca vs GEORGE WASHINGTON (11/22/18)
Rebounds	17	Dixon, Elizabeth vs Duke (01/10/19)
	17	Balogun, Elizabeth at Boston College (01/03/19)
Assists	7	Fletcher, Kierra vs No. 12 Syracuse (01/20/19)
	6	Fletcher, Kierra vs Duke (01/10/19)
	6	Fletcher, Kierra vs No. 2 Notre Dame (01/06/19)
	6	Lahtinen, Lotta-Maj at No. 7 Maryland (11/29/18)
	6	Scott, Chanin vs GEORGE WASHINGTON (11/22/18)
	6	Pan, Francesca vs Western Caro. (11/14/18)
Blocked Shots	6	Balogun, Elizabeth vs No. 12 Syracuse (01/20/19)
	4	Dixon, Elizabeth vs Duke (01/10/19)
	4	Balogun, Elizabeth vs Seton Hall (12/20/18)
Turnovers	8	Pan, Francesca at GSU (12/2/18)
	8	Lahtinen, Lotta-Maj at Houston (11/09/18)
	8	Pan, Francesca at Houston (11/09/18)

## 2018-19 OPPONENT GAME HIGHS

## TEAM

POINTS	95	at Houston (11/09/18)
	91	at North Carolina (01/31/19)
	85	vs DAYTON (12/21/18)
	76	NO. 2 NOTRE DAME (01/06/19)
	76	at Boston College (01/03/19)
FIELD GOALS MADE	34	NO. 2 NOTRE DAME (01/06/19)
	33	at Houston (11/09/18)
FIELD GOAL ATTEMPTS	88	at Houston (11/09/18)
	72	at Boston College (01/03/19)
FIELD GOAL PERCENTAGE	.548 (34-62)	NO. 2 NOTRE DAME (01/06/19)
	.500 (25-50)	at GSU (12/2/18)
3 PT FIELD GOALS MADE	14	at North Carolina (01/31/19)
	10	vs GEORGE WASHINGTON (11/22/18)
	10	at Houston (11/09/18)
3 PT FG ATTEMPTS	42	NO. 12 SYRACUSE (01/20/19)
	39	at Houston (11/09/18)
3 PT FG PERCENTAGE	.500 (14-28)	at North Carolina (01/31/19)
	.444 (8-18)	at GSU (12/2/18)
FREE THROWS MADE	33	vs DAYTON (12/21/18)
	19	at North Carolina (01/31/19)
	19	at Clemson (11/17/19)
	19	at Houston (11/09/18)
FREE THROW ATTEMPTS	41	vs DAYTON (12/21/18)
	33	at Houston (11/09/18)
FREE THROW PERCENTAGE	.944 (17-18)	at No. 7 Maryland (11/29/18)
	.818 (9-11)	KENNESAW ST. (12/16/18)
REBOUNDS	46	vs DAYTON (12/21/18)
	44	at Houston (11/09/18)
ASSISTS	30	NO. 2 NOTRE DAME (01/06/19)
	20	DUKE (01/10/19)
	20	at Houston (11/09/18)
STEALS	19	at Houston (11/09/18)
	13	KENNESAW ST. (12/16/18)
	13	at GSU (12/2/18)
BLOCKED SHOTS	10	NO. 14 GEORGIA (11/18/18)
	6	ALABAMA ST. (12/05/18)
TURNOVERS	31	at GSU (12/2/18)
	27	WESTERN CARO. (11/14/18)
FOULS	25	vs IDAHO STATE (11/23/18)
	24	at Boston College (01/03/19)

## INDIVIDUAL

Points	29	Kea, Paris at North Carolina (01/31/19)
	27	SCAIFE, Jayla vs DAYTON (12/21/18)
	26	Jasmyne Harris at Houston (11/09/18)
	26	Alyssa Okoene at Houston (11/09/18)
	24	CANNATELLI, Lauren vs DAYTON (12/21/18)
Field Goals Made	10	Alyssa Okoene at Houston (11/09/18)
	9	Kea, Paris at North Carolina (01/31/19)
	9	Georgia Pineau at Boston College (01/03/19)
Field Goal Att.	30	Jasmyne Harris at Houston (11/09/18)
	22	Haley Gorecki vs Duke (01/10/19)
FG Pct (min 5 made)	833 (5-6)	Johnson, Allison at GSU (12/2/18)
	800 (8-10)	Jessica Shepard vs No. 2 Notre Dame (01/06/19)
3-Point FG Made	5	BAUTISTA, Mei-Lyn vs GEORGE WASHINGTON (11/22/18)
	4	Watts, Stephanie at North Carolina (01/31/19)
	4	Kiara Leslie vs No. 8 NC State (1/27/19)
	4	Haley Gorecki vs Duke (01/10/19)
	4	Inja Butina vs Seton Hall (12/20/18)
	4	Taylor Mikesell at No. 7 Maryland (11/29/18)
	4	Jasmyne Harris at Houston (11/09/18)
3-Point FG Att.	19	Jasmyne Harris at Houston (11/09/18)
	13	Haley Gorecki vs Duke (01/10/19)
3-Pt FG Pct (min 2 made)	800 (4-5)	Kiara Leslie vs No. 8 NC State (1/27/19)
	.750 (3-4)	Bennett, Shayla at North Carolina (01/31/19)
	.750 (3-4)	OLTROGGE, Montana vs IDAHO STATE (11/23/18)
Free Throws Made	14	CANNATELLI, Lauren vs DAYTON (12/21/18)
	9	SCAIFE, Jayla vs DAYTON (12/21/18)
	9	Kaila Charles at No. 7 Maryland (11/29/18)
Free Throw Att.	16	CANNATELLI, Lauren vs DAYTON (12/21/18)
	12	SCAIFE, Jayla vs DAYTON (12/21/18)
	12	Shmya Ward vs Alabama St. (12/05/18)
	12	Jasmyne Harris at Houston (11/09/18)
FT Pct (min 3 made)	1.000 (9-9)	Kaila Charles at No. 7 Maryland (11/29/18)
	1.000 (7-7)	Kamiyah Street vs Kennesaw St. (12/16/18)
	1.000 (6-6)	Simone Westbrook at Clemson (11/17/19)
	1.000 (4-4)	Sam Fuehring at No. 2 Louisville (01/13/19)
	1.000 (4-4)	Georgia Pineau at Boston College (01/03/19)
	1.000 (4-4)	Wright, Wainatia at GSU (12/2/18)
	1.000 (4-4)	Blair Watson at No. 7 Maryland (11/29/18)
	1.000 (4-4)	TAPASA, Sai vs IDAHO STATE (11/23/18)
	1.000 (3-3)	Inja Butina vs Seton Hall (12/20/18)
	1.000 (3-3)	Murphy, Janessa at GSU (12/2/18)
Rebounds	15	Shmya Ward vs Alabama St. (12/05/18)
	15	Bayley Plummer vs Appalachian St. (11/11/18)
Assists	12	Arike Ogunbowale vs No. 2 Notre Dame (01/06/19)
	11	Mikayla Boykin vs Duke (01/10/19)
Steals	6	Jasmyne Harris at Houston (11/09/18)
	5	Kamiyah Street vs Kennesaw St. (12/16/18)
Blocked Shots	6	Jenna Stalti vs No. 14 Georgia (11/18/18)
	5	Shmya Ward vs Alabama St. (12/05/18)
Turnovers	9	Kaila Charles at No. 7 Maryland (11/29/18)
	8	Danielle Edwards at Clemson (11/17/19)
Fouls	5	Watts, Stephanie at North Carolina (01/31/19)
	5	Marnelle Garraud at Boston College (01/03/19)



## HEAD COACH MACHELLE JOSEPH

16th Season • Purdue '92 • Auburn, Ind.

Georgia Tech signed head women's basketball coach Machel Joseph to a two-year contract extension through the 2019-20 season, as announced on Oct. 21, 2014. Joseph has had unprecedented success at the helm of the Yellow Jackets during the past 14 seasons. Joseph is just the second head coach in Yellow Jacket history to hit 200 career wins and is the all-time winningest coach at GT. Her 61 percent career winning percentage is the highest in Georgia Tech history. Currently, Joseph has nine 20-win seasons and seven NCAA tournament appearances, including six-straight from 2007 through 2012. Under Joseph's direction, 19 Yellow Jackets have garnered All-ACC accolades and four Jackets have been named All-ACC First Team members since Joseph became the head coach in 2003. Seven freshmen have been named to the All-ACC Freshman Team, including one a year from 2011 to 2014. Tyaunna Marshall was named an AP honorable mention All-American in both 2013 and 2014. Joseph has coached six Jackets that were selected in the WNBA Draft. Both Alex Montgomery and Sasha Goodlett were chosen in the first round of the WNBA Draft in 2011 and 2012, respectively. Aaliyah Whiteside was tabbed an honorable mention WBCA All-American last season, becoming just the sixth All-American Yellow Jacket in program history.

### THE JOSEPH FILE

#### PERSONAL

**Education** Purdue, 1992 (B.A., Movement and Sports Science)

#### COLLEGE COACHING EXPERIENCE

1992-93 Assistant Coach, Illinois  
1993-96 Assistant Coach, Purdue  
1996-01 Assistant Coach, Auburn  
2001-03 Assistant Coach, Georgia Tech  
2003- pres Head Coach, Georgia Tech

#### COLLEGE COACHING RECORD

SEASON	SCHOOL	RECORD	ACC FINISH	POSTSEASON
1992-93	Illinois	12-15	--	--
1993-94	Purdue	29-5	--	Final Four
1994-95	Purdue	24-8	--	NCAA Elite Eight
1995-96	Purdue	20-11	--	NCAA 1st Rd.
1996-97	Auburn	22-10	--	NCAA 2nd Rd.
1997-98	Auburn	16-11	--	--
1998-99	Auburn	20-9	--	NCAA 2nd Rd.
1999-00	Auburn	22-8	--	NCAA 2nd Rd.
2000-01	Auburn	17-12	--	--
2001-02	Georgia Tech	15-14	7-9/t-5th	WNIT 1st Rd.
2002-03	Georgia Tech	20-11	8-8/t-4th	NCAA 1st Rd.
<b>2003-04</b>	<b>Georgia Tech</b>	<b>14-15</b>	<b>5-11/8th</b>	<b>--</b>
<b>2004-05</b>	<b>Georgia Tech</b>	<b>13-14</b>	<b>4-10/8th</b>	<b>--</b>
<b>2005-06</b>	<b>Georgia Tech</b>	<b>14-15</b>	<b>2-12/11th</b>	<b>--</b>
<b>2006-07</b>	<b>Georgia Tech</b>	<b>21-12</b>	<b>9-5/6th</b>	<b>NCAA 2nd Rd.</b>
<b>2007-08</b>	<b>Georgia Tech</b>	<b>22-10</b>	<b>7-7/5th</b>	<b>NCAA 1st Rd.</b>
<b>2008-09</b>	<b>Georgia Tech</b>	<b>22-10</b>	<b>8-6/5th</b>	<b>NCAA 2nd Rd.</b>
<b>2009-10</b>	<b>Georgia Tech</b>	<b>23-10</b>	<b>8-6/4th</b>	<b>NCAA 1st Rd.</b>
<b>2010-11</b>	<b>Georgia Tech</b>	<b>24-11</b>	<b>9-5/t-4th</b>	<b>NCAA 2nd Rd.</b>
<b>2011-12</b>	<b>Georgia Tech</b>	<b>26-9</b>	<b>12-4/t-3rd</b>	<b>NCAA Sweet 16</b>
<b>2012-13</b>	<b>Georgia Tech</b>	<b>14-16</b>	<b>7-11/t-7th</b>	<b>--</b>
<b>2013-14</b>	<b>Georgia Tech</b>	<b>20-12</b>	<b>9-7/t-7th</b>	<b>NCAA 1st Rd.</b>
<b>2014-15</b>	<b>Georgia Tech</b>	<b>19-15</b>	<b>7-9/t-9th</b>	<b>WNIT 2nd Rd.</b>
<b>2015-16</b>	<b>Georgia Tech</b>	<b>20-13</b>	<b>8-8/t-7th</b>	<b>WNIT 2nd Rd.</b>
<b>2016-17</b>	<b>Georgia Tech</b>	<b>22-15</b>	<b>5-11/10th</b>	<b>WNIT Finals</b>
<b>2017-18</b>	<b>Georgia Tech</b>	<b>20-14</b>	<b>6-10/T9th</b>	<b>WNIT 3rd Rd.</b>
<b>2018-19</b>	<b>Georgia Tech</b>	<b>13-8</b>		

**Bold** = Head Coach

<b>HEAD COACH (15 SEASONS)</b>	<b>307-199 (.609)</b>
<b>ASSISTANT COACH (11 SEASONS)</b>	<b>217-114 (.656)</b>
<b>25 OVERALL SEASONS</b>	<b>528-313 (.630)</b>
Illinois (1 season)	12-15 (.444)
Purdue (3 seasons)	73-24 (.753)
Auburn (5 seasons)	97-50 (.660)
Georgia Tech (15 seasons)	340-223 (.605)

### BY THE NUMBERS

**307** all-time wins, making Joseph the all-time winningest coach at Georgia Tech

**61%** career winning percentage - the highest in Georgia Tech history

**19** All-ACC selections, including four All ACC-First Team selections

**13** wins vs. top 25 teams, including four wins vs. top 10 teams

**11** All-ACC Academic Selections

**9** seasons with 20+ wins

**7** NCAA Tournament Appearances

**6** WNBA Draft picks, including two first round selections

**6** Georgia College Players of the Year

**2** time Georgia College Coach of the Year

### JOSEPH VS. 2018-19 OPPONENTS

Opponent	Wins	Losses	Pct.				
Alabama State	7	0	1.000	Maryland	4	16	0.211
Appalachian State	5	0	1.000	Miami (FL)	14	12	0.565
Boston College	11	5	0.583	North Carolina	9	17	0.348
Clemson	26	8	0.786	North Carolina State	9	11	0.529
Dayton	1	1	.500	Notre Dame	0	11	0.000
Duke	3	18	0.111	Pittsburgh	3	2	0.667
Florida State	6	12	0.375	Seton Hall	2	0	1.000
Georgia	5	11	0.231	Syracuse	2	5	.200
Georgia State	12	0	1.000	Virginia	9	11	0.529
George Washington	1	0	1.000	Virginia Tech	10	5	0.692
Houston	0	0	.000	Wake Forest	16	6	0.750
Idaho State	1	0	1.000	Western Carolina	2	0	1.000
Kennesaw State	11	0	1.000	Wofford	1	0	1.000
Louisville	0	6	0.000	<b>TOTAL</b>	<b>170</b>	<b>157</b>	<b>0.511</b>

## CAREER STATS

## Individual Career History

## Balogun, Elizabeth

			Total		3-Point		F-Throws		Rebounds											Scoring	
Season	gp-gs	min/avg	fg-fga	pct	fg-fga	pct	ft-fa	pct	off	def	tot	avg	pf	fo	ast	to	blk	stl	pts	avg	
2018-19	21-21	640/30.5	128-278	.460	51-128	.398	35-52	.673	42	70	112	5.3	52	3	37	41	26	35	342	16.3	
TOTAL	21-21	640/30.5	128-278	.460	51-128	.398	35-52	.673	42	70	112	5.3	52	3	37	41	26	35	342	16.3	

## Carson, Jasmine

			Total		3-Point		F-Throws		Rebounds											Scoring	
Season	gp-gs	min/avg	fg-fga	pct	fg-fga	pct	ft-fa	pct	off	def	tot	avg	pf	fo	ast	to	blk	stl	pts	avg	
2018-19	13-1	47/3.6	3-25	.120	3-17	.176	2-2	1.000	0	0	0	0.0	5	0	2	3	0	2	11	0.8	
TOTAL	13-1	47/3.6	3-25	.120	3-17	.176	2-2	1.000	0	0	0	0.0	5	0	2	3	0	2	11	0.8	

## Cubaj, Lorela

			Total		3-Point		F-Throws		Rebounds											Scoring	
Season	gp-gs	min/avg	fg-fga	pct	fg-fga	pct	ft-fa	pct	off	def	tot	avg	pf	fo	ast	to	blk	stl	pts	avg	
2017-18	34-32	701/20.6	57-173	.329	1-6	.167	12-26	.462	46	104	150	4.4	72	1	50	52	26	46	127	3.7	
2018-19	21-21	567/27.0	65-154	.422	1-3	.333	20-43	.465	48	97	145	6.9	71	2	38	51	22	27	151	7.2	
TOTAL	55-53	1268/23.1	122-327	.373	2-9	.222	32-69	.464	94	201	295	5.4	143	3	88	103	48	73	278	5.1	

## Diouf, Anne

			Total		3-Point		F-Throws		Rebounds											Scoring	
Season	gp-gs	min/avg	fg-fga	pct	fg-fga	pct	ft-fa	pct	off	def	tot	avg	pf	fo	ast	to	blk	stl	pts	avg	
2016-17	13-1	31/2.4	1-2	.500	0-0	.000	0-0	.000	2	7	9	0.7	3	0	0	3	2	1	2	0.2	
2018-19	19-0	145/7.6	5-22	.227	0-0	.000	9-12	.750	13	23	36	1.9	14	0	3	12	4	6	19	1.0	
TOTAL	32-1	176/5.5	6-24	.250	0-0	.000	9-12	.750	15	30	45	1.4	17	0	3	15	6	7	21	0.7	

## Dixon, Elizabeth

			Total		3-Point		F-Throws		Rebounds											Scoring	
Season	gp-gs	min/avg	fg-fga	pct	fg-fga	pct	ft-fa	pct	off	def	tot	avg	pf	fo	ast	to	blk	stl	pts	avg	
2018-19	21-21	533/25.4	80-153	.523	0-0	.000	44-65	.677	72	69	141	6.7	55	3	21	52	23	13	204	9.7	
TOTAL	21-21	533/25.4	80-153	.523	0-0	.000	44-65	.677	72	69	141	6.7	55	3	21	52	23	13	204	9.7	

## Fletcher, Kierra

			Total		3-Point		F-Throws		Rebounds											Scoring	
Season	gp-gs	min/avg	fg-fga	pct	fg-fga	pct	ft-fa	pct	off	def	tot	avg	pf	fo	ast	to	blk	stl	pts	avg	
2017-18	34-34	902/26.5	98-233	.421	0-2	.000	61-102	.598	57	120	177	5.2	88	2	78	60	10	55	257	7.6	
2018-19	21-21	657/31.3	66-169	.391	0-1	.000	64-90	.711	42	75	117	5.6	57	1	54	55	3	37	196	9.3	
TOTAL	55-55	1559/28.3	164-402	.408	0-3	.000	125-192	.651	99	195	294	5.3	145	3	132	115	13	92	453	8.2	

## Fortune, Martine

			Total		3-Point		F-Throws		Rebounds											Scoring	
Season	gp-gs	min/avg	fg-fga	pct	fg-fga	pct	ft-fa	pct	off	def	tot	avg	pf	fo	ast	to	blk	stl	pts	avg	
2015-16	13-2	93/7.2	12-18	.667	0-0	.000	0-0	.000	13	18	31	2.4	24	1	3	10	5	1	24	1.8	
2016-17	10-0	43/4.3	1-5	.200	0-0	.000	1-2	.500	3	4	7	0.7	13	0	0	5	1	0	3	0.3	
2017-18	11-0	40/3.6	4-10	.400	0-0	.000	0-0	.000	6	8	14	1.3	5	0	0	1	1	0	8	0.7	
2018-19	7-0	13/1.9	1-5	.200	0-0	.000	0-0	.000	2	5	7	1.0	1	0	0	1	1	1	2	0.3	
TOTAL	41-2	189/4.6	18-38	.474	0-0	.000	1-2	.500	24	35	59	1.4	43	1	3	17	8	2	37	0.9	

## Gregg, D'asia

			Total		3-Point		F-Throws		Rebounds											Scoring	
Season	gp-gs	min/avg	fg-fga	pct	fg-fga	pct	ft-fa	pct	off	def	tot	avg	pf	fo	ast	to	blk	stl	pts	avg	
2018-19	15-0	110/7.3	15-35	.429	5-11	.455	11-16	.688	11	10	21	1.4	11	0	4	10	0	5	46	3.1	
TOTAL	15-0	110/7.3	15-35	.429	5-11	.455	11-16	.688	11	10	21	1.4	11	0	4	10	0	5	46	3.1	

## CAREER STATS

## Individual Career History

## Jefferson, Daijah

			Total		3-Point		F-Throws		Rebounds											Scoring	
Season	gp-gs	min/avg	fg-fga	pct	fg-fga	pct	ft-fta	pct	off	def	tot	avg	pf	fo	ast	to	blk	stl	pts	avg	
2018-19	16-0	152/9.5	13-53	.245	7-30	.233	5-8	.625	7	9	16	1.0	12	0	3	15	1	4	38	2.4	
TOTAL	16-0	152/9.5	13-53	.245	7-30	.233	5-8	.625	7	9	16	1.0	12	0	3	15	1	4	38	2.4	

## Lahtinen, Lotta-Mai

			Total		3-Point		F-Throws		Rebounds											Scoring	
Season	gp-gs	min/avg	fg-fga	pct	fg-fga	pct	ft-fta	pct	off	def	tot	avg	pf	fo	ast	to	blk	stl	pts	avg	
2018-19	21-2	388/18.5	37-101	.366	9-26	.346	16-22	.727	20	20	40	1.9	46	3	45	41	1	31	99	4.7	
TOTAL	21-2	388/18.5	37-101	.366	9-26	.346	16-22	.727	20	20	40	1.9	46	3	45	41	1	31	99	4.7	

## Montgomery, Kondalia

			Total		3-Point		F-Throws		Rebounds											Scoring	
Season	gp-gs	min/avg	fg-fga	pct	fg-fga	pct	ft-fta	pct	off	def	tot	avg	pf	fo	ast	to	blk	stl	pts	avg	
2018-19	7-0	13/1.9	1-3	.333	0-0	.000	0-0	.000	1	2	3	0.4	5	0	1	0	0	0	2	0.3	
TOTAL	7-0	13/1.9	1-3	.333	0-0	.000	0-0	.000	1	2	3	0.4	5	0	1	0	0	0	2	0.3	

## Pan, Francesca

			Total		3-Point		F-Throws		Rebounds										Scoring	
Season	gp-gs	min/avg	fg-fga	pct	fg-fga	pct	ft-fta	pct	off	def	tot	avg	pf	fo	ast	to	blk	stl	pts	avg
2016-17	36-35	966/26.8	154-420	.367	63-200	.315	43-68	.632	45	90	135	3.8	101	6	40	78	18	42	414	11.5
2017-18	34-34	1056/31.1	156-445	.351	79-242	.326	95-133	.714	25	64	89	2.6	73	0	66	65	19	41	486	14.3
2018-19	21-18	641/30.5	89-263	.338	41-133	.308	29-35	.829	12	78	90	4.3	50	3	34	53	8	41	248	11.8
TOTAL	91-87	2663/29.3	399-1128	.354	183-575	.318	167-236	.708	82	232	314	3.5	224	9	140	196	45	124	1148	12.6

## Scott, Chanin

			Total		3-Point		F-Throws		Rebounds											Scoring	
Season	gp-gs	min/avg	fg-fga	pct	fg-fga	pct	ft-fta	pct	off	def	tot	avg	pf	fo	ast	to	blk	stl	pts	avg	
2016-17	37-9	677/18.3	65-151	.430	6-12	.500	30-54	.556	62	88	150	4.1	91	1	22	52	9	31	166	4.5	
2017-18	33-22	598/18.1	93-200	.465	10-33	.303	25-41	.610	61	68	129	3.9	50	0	24	53	9	28	221	6.7	
2018-19	19-0	348/18.3	48-100	.480	0-4	.000	15-24	.625	30	33	63	3.3	39	1	20	33	1	20	111	5.8	
TOTAL	89-31	1623/18.2	206-451	.457	16-49	.327	70-119	.588	153	189	342	3.8	180	2	66	138	19	79	498	5.6	



## DAIJAH JEFFERSON

## #00

Redshirt-Freshman • 6'0" • Guard • Hopewell, Va. • Hopewell

### THE JEFFERSON FILE

Scored a career-high 14 points against Western Carolina (11/14), hitting three treys in the process...Posted nine points in Tech's win over Idaho State (11/23) in the Cancun Challenge in 21 minutes of playing time...Connected on a three-pointer against Wofford (12/30) and pulled down two rebounds.

### KEY SEASON AVERAGES

Points	Rebounds	Steals
<b>2.4</b>	<b>1.0</b>	<b>0.3</b>

### CAREER & SEASON HIGHS

#### Points

Career: 14 vs. Western Carolina (11/14/18)

#### Field Goals

Career: 5 vs. Western Carolina (11/14/18)

#### Field Goals Attempted

Career: 12 vs. Western Carolina (11/14/18)

#### 3- Point Field Goals

Career: 3 vs. Western Carolina (11/14/18)

#### 3- Point Field Goals Attempted

Career: 7 vs. Western Carolina (11/14/18)

#### Free Throws

Career: 3 vs. Idaho State (11/23/18)

#### Free Throws Attempted

Career: 4 vs. Idaho State (11/23/18)

#### Rebounds

Career: 3 vs. Alabama State (12/5/18)

#### Assists

Career: 1, 3x, last vs. Wofford (12/30/18)

#### Steals

Career: 4 vs. Western Carolina (11/14/18)

#### Blocks

Career: 1 at Houston (11/9/18)

#### Turnovers

Career: 3, 2x, last vs. Wofford (12/30/18)

#### Minutes

Career: 24 vs. Western Carolina (11/14/18)

#### Miscellaneous

	Career	18-19
Double-Doubles:	-	-
Double Figure Points:	1	1
Double Figure Rebounds:	-	-
Led Team In Points/Rebs:	-	-
20+ Points:	-	-

### 2018-19 GAME-BY-GAME

				Total		3-Pointers		Free throws		Rebounds											
Opponent	Date	qs	min	fg-fga	pct	3fg-fga	pct	ft-fa	pct	off	def	tot	avg	pf	a	t/o	blk	stl	pts	avg	
at Houston	11/09/18	7	0-1	.000	0-0	.000	0-0	.000	0	2	2	2.0	2	0	1	1	0	0	0	0.0	
APPALACHIAN ST.	11/11/18	4	0-1	.000	0-0	.000	0-0	.000	0	0	0	1.0	1	0	0	0	0	0	0	0.0	
WESTERN CARO.	11/14/18	24	5-12	.417	3-7	.429	1-1	1.000	0	2	2	1.3	2	1	3	0	4	14	4.7		
NO. 14 GEORGIA	11/18/18	15	1-5	.200	0-2	.000	1-2	.500	0	1	1	1.3	0	1	1	0	0	3	4.3		
vs GEORGE WASHINGTON	11/22/18	11	1-5	.200	0-3	.000	0-0	.000	1	0	1	1.2	2	0	1	0	0	2	3.8		
vs IDAHO STATE	11/23/18	21	2-5	.400	2-4	.500	3-4	.750	0	1	1	1.2	2	0	1	0	0	9	4.7		
at No. 7 Maryland	11/29/18	6	0-1	.000	0-0	.000	0-0	.000	0	0	0	1.0	0	0	1	0	0	0	4.0		
at GSU	12/2/18	7	0-4	.000	0-1	.000	0-0	.000	1	1	2	1.1	0	0	0	0	0	0	3.5		
ALABAMA ST.	12/05/18	14	0-6	.000	0-5	.000	0-0	.000	1	2	3	1.3	1	0	0	0	0	0	3.1		
KENNESAW ST.	12/16/18	9	1-3	.333	1-2	.500	0-0	.000	0	0	0	1.2	0	0	2	0	0	3	3.1		
vs DAYTON	12/21/18	3	2-2	1.000	0-0	.000	0-1	.000	1	0	1	1.2	2	0	1	0	0	4	3.2		
WOFFORD	12/30/18	16	1-4	.250	1-3	.333	0-0	.000	2	0	2	1.3	0	1	3	0	0	3	3.2		
at Boston College	01/03/19	2	0-0	.000	0-0	.000	0-0	.000	0	0	0	1.2	0	0	0	0	0	0	2.9		
NO. 2 NOTRE DAME	01/06/19	6	0-1	.000	0-1	.000	0-0	.000	0	0	0	1.1	0	0	0	0	0	0	2.7		
at No. 2 Louisville	01/13/19	5	0-2	.000	0-1	.000	0-0	.000	1	0	1	1.1	0	0	1	0	0	0	2.5		
NO. 8 NC STATE	1/27/19	2	0-1	.000	0-1	.000	0-0	.000	0	0	0	1.0	0	0	0	0	0	0	2.4		
Totals		0	152	13-53	.245	7-30	.233	5-8	.625	7	9	16	1.0	12	3	15	1	4	38	2.4	

Games played: 16

Minutes/game: 9.5

Points/game: 2.4

FG Pct: 24.5

3FG Pct: 23.3

FT Pct: 62.5

Rebounds/game: 1.0

Assists/game: 0.2

Turnovers/game: 0.9

Assist/turnover ratio: 0.2

Steals/game: 0.3

Blocks/game: 0.1

**JASMINE CARSON**

#2

Freshman • 5'10" • Guard • Memphis, Tenn. • McEachern Powder Springs

**THE CARSON FILE**

Scored first collegiate points in win over Western Carolina (11/14), chipping in six points, hitting two three-pointers...Hit two free throws in win over Idaho State (11/23) in the Cancun Challenge...Saw six minutes of action against Wofford (12/30) and attempted a pair of three-pointers...Took the floor against Duke (1/10), connecting on a three-pointer to add to the scoreboard...Saw six minutes of playing time against No. 12 Syracuse (1/20) and recorded a steal...Earned first collegiate start at North Carolina (1/31) and posted an assist and steal in six minutes.

**KEY SEASON AVERAGES**

Points      Rebounds      Assists  
**0.8**      **--**      **0.2**

**CAREER & SEASON HIGHS****Points**

Career: 6 vs. Western Carolina (11/14/18)

**Field Goals**

Career: 2 vs. Western Carolina (11/14/18)

**Field Goals Attempted**

Career: 4, 2x, last vs. Alabama State (12/5/18)

**3- Point Field Goals**

Career: 2 vs. Western Carolina (11/14/18)

**3- Point Field Goals Attempted**

Career: 3, 3x, last at UNC (1/31/19)

**Free Throws**

Career: 2 vs. Idaho State (11/23/18)

**Free Throws Attempted**

Career: 2 vs. Idaho State (11/23/18)

**Rebounds**

Career:

**Assists**

Career: 1, 2x, last at UNC (1/31/19)

**Steals**

Career: 1, 2x, last at UNC (1/31/19)

**Blocks**

Career:

**Turnovers**

Career: 1, 3x, last vs. Duke (1/10/19)

**Minutes**

Career: 7, 3x, last vs. Alabama State (12/5/18)

**Miscellaneous**

	Career	18-19
Double-Doubles:	-	-
Double Figure Points:	-	-
Double Figure Rebounds:	-	-
Led Team In Points/Rebs:	-	-
20+ Points:	-	-

**2018-19 GAME-BY-GAME**

Opponent	Date	gs	min	Total fg-fga	pct	3-Pointers 3fg-fga	pct	Free throws ft-fa	pct	Rebounds off	def	tot	avg	pf	a	t/o	blk	stl	pts	avg
at Houston	11/09/18	0	0-0	.000	0-0	.000	0-0	.000	0-0	0	0	0	0.0	0	0	0	0	0	0	0.0
APPALACHIAN ST.	11/11/18	7	0-3	.000	0-1	.000	0-0	.000	0-0	0	0	0	0.0	0	1	0	0	0	0	0.0
WESTERN CARO.	11/14/18	7	2-4	.500	2-3	.667	0-0	.000	0-0	0	0	0	0.0	1	0	0	0	0	6	2.0
vs GEORGE WASHINGTO	11/22/18	1	0-0	.000	0-0	.000	0-0	.000	0-0	0	0	0	0.0	0	0	0	0	0	0	1.5
vs IDAHO STATE	11/23/18	2	0-1	.000	0-0	.000	2-2	1.000	0	0	0	0	0.0	1	0	0	0	0	2	1.6
at GSU	12/2/18	1	0-1	.000	0-1	.000	0-0	.000	0-0	0	0	0	0.0	0	0	1	0	0	0	1.3
ALABAMA ST.	12/05/18	7	0-4	.000	0-3	.000	0-0	.000	0-0	0	0	0	0.0	0	0	0	0	0	0	1.1
KENNESAW ST.	12/16/18	2	0-1	.000	0-1	.000	0-0	.000	0-0	0	0	0	0.0	0	0	0	0	0	0	1.0
vs DAYTON	12/21/18	1	0-0	.000	0-0	.000	0-0	.000	0-0	0	0	0	0.0	0	0	0	0	0	0	0.9
WOFFORD	12/30/18	6	0-3	.000	0-2	.000	0-0	.000	0-0	0	0	0	0.0	0	0	1	0	0	0	0.8
DUKE	01/10/19	1	1-2	.500	1-2	.500	0-0	.000	0-0	0	0	0	0.0	0	0	1	0	0	3	1.0
NO. 12 SYRACUSE	01/20/19	6	0-3	.000	0-1	.000	0-0	.000	0-0	0	0	0	0.0	1	0	0	0	1	0	0.9
at North Carolina	01/31/19 *	6	0-3	.000	0-3	.000	0-0	.000	0-0	0	0	0	0.0	2	1	0	0	1	0	0.8
<b>Totals</b>		<b>1</b>	<b>47</b>	<b>3-25</b>	<b>.120</b>	<b>3-17</b>	<b>.176</b>	<b>2-2</b>	<b>1.000</b>	<b>0</b>	<b>0</b>	<b>0</b>	<b>0.0</b>	<b>5</b>	<b>2</b>	<b>3</b>	<b>0</b>	<b>2</b>	<b>11</b>	<b>0.8</b>

Games played: 13

Minutes/game: 3.6

Points/game: 0.8

FG Pct: 12.0

3FG Pct: 17.6

FT Pct: 100.0

Assists/game: 0.2

Turnovers/game: 0.2

Assist/turnover ratio: 0.7

Steals/game: 0.2

**ANNE FRANCOISE DIOUF****#4****Redshirt-Sophomore • 6'4" • Forward • Dakar, Senegal • IMG Academy****THE DIOUF FILE**

Chipped in five points in win over Western Carolina (11/14)...Added four points to the scoreboard in win over Idaho State (11/23), going 4-for-4 from the free throw line...Played 16 minutes against Alabama State (12/5) and pulled down a career-best seven rebounds, which tied for the team-high, and two blocks... Scored two points in Tech's win over Wofford (12/30) and pulled down six rebounds...Saw game action against No. 2 Notre Dame (1/6), playing two minutes... Played a career-best 23 minutes at No. 2 Louisville (1/13) and finished with six rebounds, two blocks, two steals and two points...Contributed two points and a rebound in Tech's win over No. 12 Syracuse (1/20).

**KEY SEASON AVERAGES**

Points  
**1.0**

Rebounds  
**1.9**

Steals  
**0.3**

**CAREER & SEASON HIGHS****Points**

Season: 5 vs. Western Carolina (11/14/18)

Career: 5 vs. Western Carolina (11/14/18)

**Field Goals**

Season: 1, 4x, last vs. Syracuse (1/20/19)

Career: 1, 5x, last vs. Syracuse (1/20/19)

**Field Goals Attempted**

Season: 3, 5x, last vs. Syracuse (1/20/19)

Career: 3, 5x, last vs. Syracuse (1/20/19)

**3- Point Field Goals**

Season:

Career:

**3- Point Field Goals Attempted**

Season:

Career:

**Free Throws**

Season: 4 vs. Idaho State (11/23/18)

Career: 4 vs. Idaho State (11/23/18)

**Free Throws Attempted**

Season: 4, 3x, last vs. Alabama State (12/5/18)

Career: 4, 3x, last vs. Alabama State (12/5/18)

**Rebounds**

Season: 7 vs. Alabama State (12/5/18)

Career: 7 vs. Alabama State (12/5/18)

**Assists**

Season: 1, 3x, last at Louisville (1/13/19)

Career: 1, 3x, last at Louisville (1/13/19)

**Steals**

Season: 2, 2x, last at Louisville (1/13/19)

Career: 2, 2x, last at Louisville (1/13/19)

**Blocks**

Season: 2, 2x, last at Louisville (1/13/19)

Career: 2, 2x, last at Louisville (1/13/19)

**Turnovers**

Season: 3 vs. Idaho State (11/23/18)

Career: 3 vs. Idaho State (11/23/18)

**Minutes**

Season: 23 at Louisville (1/13/19)

Career: 23 at Louisville (1/13/19)

**Miscellaneous**

	Career	18-19
Double-Doubles:	-	-
Double Figure Points:	-	-
Double Figure Rebounds:	-	-
Led Team In Points/Rebs:	0/1	0/1
20+ Points:	-	-

**2018-19 GAME-BY-GAME**

Opponent	Date	gs	min	Total		3-Pointers		Free throws		Rebounds				pf	a	t/o	blk	stl	pts	avg
				fg-fga	pct	3fg-fga	pct	ft-fga	pct	off	def	tot	avg							
at Houston	11/09/18	7		0-0	.000	0-0	.000	0-0	.000	0	0	0	0.0	0	0	0	0	0	0	0.0
APPALACHIAN ST.	11/11/18	9		0-3	.000	0-0	.000	0-0	.000	1	0	1	0.5	0	0	2	0	0	0	0.0
WESTERN CARO.	11/14/18	17		1-3	.333	0-0	.000	3-4	.750	3	0	3	1.3	2	1	0	0	1	5	1.7
NO. 14 GEORGIA	11/18/18	1		0-0	.000	0-0	.000	0-0	.000	0	0	0	1.0	0	0	0	0	0	0	1.3
vs GEORGE WASHINGTON	11/22/18	12		1-2	.500	0-0	.000	0-0	.000	1	1	2	1.2	2	0	0	0	0	2	1.4
vs IDAHO STATE	11/23/18	16		0-2	.000	0-0	.000	4-4	1.000	2	4	6	2.0	3	0	3	0	1	4	1.8
at No. 7 Maryland	11/29/18	4		0-0	.000	0-0	.000	0-0	.000	0	0	0	1.7	0	0	0	0	0	0	1.6
at GSU	12/2/18	5		0-1	.000	0-0	.000	0-0	.000	0	0	0	1.5	1	0	0	0	0	0	1.4
ALABAMA ST.	12/05/18	16		0-0	.000	0-0	.000	2-4	.500	2	5	7	2.1	2	0	2	2	0	2	1.4
KENNESAW ST.	12/16/18	7		0-0	.000	0-0	.000	0-0	.000	0	1	1	2.0	1	0	1	0	2	0	1.3
vs DAYTON	12/21/18	1		0-0	.000	0-0	.000	0-0	.000	0	0	0	1.8	0	0	0	0	0	0	1.2
WOFFORD	12/30/18	10		1-3	.333	0-0	.000	0-0	.000	1	5	6	2.2	1	1	1	0	0	2	1.3
at Boston College	01/03/19	6		0-0	.000	0-0	.000	0-0	.000	1	1	2	2.2	1	0	1	0	0	0	1.2
NO. 2 NOTRE DAME	01/06/19	2		0-1	.000	0-0	.000	0-0	.000	0	0	0	2.0	0	0	0	0	0	0	1.1
at No. 2 Louisville	01/13/19	23		1-3	.333	0-0	.000	0-0	.000	1	5	6	2.3	1	1	2	2	2	2	1.1
at Clemson	1/17/19	2		0-0	.000	0-0	.000	0-0	.000	0	0	0	2.1	0	0	0	0	0	0	1.1
NO. 12 SYRACUSE	01/20/19	4		1-3	.333	0-0	.000	0-0	.000	1	0	1	2.1	0	0	0	0	0	2	1.1
NO. 8 NC STATE	1/27/19	1		0-1	.000	0-0	.000	0-0	.000	0	0	0	1.9	0	0	0	0	0	0	1.1
at North Carolina	01/31/19	2		0-0	.000	0-0	.000	0-0	.000	0	1	1	1.9	0	0	0	0	0	0	1.0
Totals		0	145	5-22	.227	0-0	.000	9-12	.750	13	23	36	1.9	14	3	12	4	6	19	1.0

Games played: 19

Minutes/game: 7.6

Points/game: 1.0

FG Pct: 22.7

FT Pct: 75.0

Rebounds/game: 1.9

Assists/game: 0.2

Turnovers/game: 0.6

Assist/turnover ratio: 0.3

Steals/game: 0.3

Blocks/game: 0.2



# ELIZABETH BALOGUN

#5

Freshman • 6'1" • Guard • Chattanooga, Tenn. • Hamilton Heights

## THE BALOGUN FILE

Opened ACC play with her first collegiate double-double at Boston College (1/3)...Tied for the team-lead in scoring with 18 points and pulled down a dominating, career-high 17 rebounds in the win...Posted a game-high 14 points against No. 2 Notre Dame (1/6) for her seventh-straight game scoring in double-figures...Tabbed ACC Rookie of the Week for the third time after helping Tech to a 1-1 start in ACC play...Added 16 points in Tech's win over Duke (1/10), going 6-for-15 from the field and finished with three triples, five rebounds, three assist, two steals and a block...Ended with a double-double at No. 2 Louisville (1/13) with a team-high 13 points and 10 rebounds...Led the Jackets with 23 points at Clemson (1/17), hitting a personal-best six three-pointers...Added 20 points in Tech's win over No. 12 Syracuse (1/20) while blocking a career-high six shots...Added 14 points to the scoreboard against No. 8 NC State (1/27) and finished with five rebounds, three assists and two steals...Set new personal-best with 35 points at UNC (1/31), tying her career-high of six three-pointers and setting a personal-best of seven free throws...Also tied career-high with five assists against the Tar Heels.

## KEY SEASON AVERAGES

Points	Rebounds	Assists
<b>16.3</b>	<b>5.3</b>	<b>1.8</b>

## CAREER & SEASON HIGHS

### Points

Career: 35 at UNC (1/31/19)

### Field Goals

Career: 12 vs. Seton Hall (12/20/18)

### Field Goals Attempted

Career: 21 vs. Seton Hall (12/20/18)

### 3- Point Field Goals

Career: 6, 2x, last at UNC (1/31/19)

### 3- Point Field Goals Attempted

Career: 12, 2x, last at UNC (1/31/19)

### Free Throws

Career: 7 at UNC (1/31/19)

### Free Throws Attempted

Career: 9 at UNC (1/31/19)

### Rebounds

Career: 17 at Boston College (1/3/19)

### Assists

Career: 5, 2x, last at UNC (1/31/19)

### Steals

Career: 5 at Houston (11/9/18)

### Blocks

Career: 6 vs. Syracuse (1/20/19)

### Turnovers

Career: 5, 2x, last vs. Duke (1/10/19)

### Minutes

Career: 41 at Houston (11/9/18)

### Miscellaneous

	Career	18-19
Double-Doubles:	1	1
Double Figure Points:	18	18
Double Figure Rebounds:	1	1
Led Team In Points/Rebs:	11/1	11/1
20+ Points:	6	6

## 2018-19 GAME-BY-GAME

				Total		3-Pointers		Free throws		Rebounds											
Opponent	Date	gs	min	fg-fga	pct	3fg-fga	pct	ft-fa	pct	off	def	tot	avg	pf	a	t/o	blk	stl	pts	avg	
at Houston	11/09/18	*	41	5-10	.500	3-5	.600	0-0	.000	2	3	5	5.0	5	2	4	2	5	13	13.0	
APPALACHIAN ST.	11/11/18	*	35	9-15	.600	3-7	.429	0-0	.000	0	1	1	3.0	3	1	1	1	0	21	17.0	
WESTERN CARO.	11/14/18	*	23	3-11	.273	1-5	.200	1-4	.250	4	2	6	4.0	0	2	0	0	0	8	14.0	
NO. 14 GEORGIA	11/18/18	*	19	3-7	.429	2-4	.500	2-2	1.000	0	0	0	3.0	1	0	1	1	0	10	13.0	
vs GEORGE WASHINGTON	11/22/18	*	33	7-15	.467	2-9	.222	3-3	1.000	2	1	3	3.0	2	4	1	0	4	19	14.2	
vs IDAHO STATE	11/23/18	*	16	0-4	.000	0-1	.000	1-2	.500	1	2	3	3.0	3	1	0	1	2	1	12.0	
at No. 7 Maryland	11/29/18	*	38	5-11	.455	3-5	.600	0-0	.000	1	2	3	3.0	1	1	1	1	0	13	12.1	
at GSU	12/2/18	*	17	1-4	.250	1-2	.500	1-2	.500	0	2	2	2.9	4	1	3	1	2	4	11.1	
ALABAMA ST.	12/05/18	*	27	8-17	.471	1-5	.200	1-2	.500	4	2	6	3.2	1	5	1	1	4	18	11.9	
KENNESAW ST.	12/16/18	*	31	6-11	.545	3-5	.600	0-0	.000	2	6	8	3.7	2	3	0	3	0	15	12.2	
vs Seton Hall	12/20/18	*	38	12-21	.571	3-7	.429	3-3	1.000	3	3	6	3.9	3	2	1	4	2	30	13.8	
vs DAYTON	12/21/18	*	33	5-16	.313	1-7	.143	2-4	.500	3	4	7	4.2	5	1	5	2	0	13	13.8	
WOFFORD	12/30/18	*	32	10-16	.625	1-4	.250	3-4	.750	3	5	8	4.5	2	1	4	1	2	24	14.5	
at Boston College	01/03/19	*	35	7-14	.500	2-3	.667	2-4	.500	5	12	17	5.4	0	1	1	0	1	18	14.8	
NO. 2 NOTRE DAME	01/06/19	*	27	6-13	.462	1-6	.167	1-2	.500	0	2	2	5.1	4	0	2	1	0	14	14.7	
DUKE	01/10/19	*	36	6-15	.400	3-8	.375	1-1	1.000	1	4	5	5.1	1	3	5	1	2	16	14.8	
at No. 2 Louisville	01/13/19	*	25	5-11	.455	2-6	.333	1-2	.500	5	5	10	5.4	3	0	3	0	3	13	14.7	
at Clemson	1/17/19	*	34	8-20	.400	6-12	.500	1-2	.500	2	1	3	5.3	3	0	4	0	2	23	15.2	
NO. 12 SYRACUSE	01/20/19	*	28	7-13	.538	4-7	.571	2-2	1.000	2	5	7	5.4	3	1	1	6	1	20	15.4	
NO. 8 NC STATE	1/27/19	*	32	4-14	.286	3-8	.375	3-4	.750	0	5	5	5.4	5	3	0	0	2	14	15.4	
at North Carolina	01/31/19	*	40	11-20	.550	6-12	.500	7-9	.778	2	3	5	5.3	1	5	3	0	3	35	16.3	
Totals		21	640	128-278	.460	51-128	.398	35-52	.673	42	70	112	5.3	52	37	41	26	35	342	16.3	

Games played: 21  
Minutes/game: 30.5  
Points/game: 16.3  
FG Pct: 46.0  
3FG Pct: 39.8  
FT Pct: 67.3

Rebounds/game: 5.3  
Assists/game: 1.8  
Turnovers/game: 2.0  
Assist/turnover ratio: 0.9  
Steals/game: 1.7  
Blocks/game: 1.2



## KONDALIA MONTGOMERY

## #12

Freshman • 5'7" • Guard • Tacoma, Wash. • Lincoln

### THE MONTGOMERY FILE

Scored first collegiate field goal in season-opener at Houston (11/9)...Took the floor against App State (11/11) and pulled down a rebound and dished out an assist...Saw three minutes of action against Alabama State (12/5) and secured a rebound...Saw game action against Wofford (12/30).

### KEY SEASON AVERAGES

Points      Rebounds      Assists  
**0.3**      **0.4**      **0.1**

### CAREER & SEASON HIGHS

#### Points

Career: 2 at Houston (11/9/18)

#### Field Goals

Career: 1 at Houston (11/9/18)

#### Field Goals Attempted

Career: 3 at Houston (11/9/18)

#### 3- Point Field Goals

Career:

#### 3- Point Field Goals Attempted

Career:

#### Free Throws

Career:

#### Free Throws Attempted

Career:

#### Rebounds

Career: 1, 3x, last vs. Alabama State (12/5/18)

#### Assists

Career: 1 vs. App State (11/11/18)

#### Steals

Career:

#### Blocks

Career:

#### Turnovers

Career:

#### Minutes

Career: 3 vs. Alabama State (12/5/18)

#### Miscellaneous

	Career	18-19
Double-Doubles:	-	-
Double Figure Points:	-	-
Double Figure Rebounds:	-	-
Led Team In Points/Rebs:	-	-
20+ Points:	-	-

### 2018-19 GAME-BY-GAME

Opponent	Date	gs	min	Total fg-fga	pct	3-Pointers 3fg-fga	pct	Free throws ft-fla	pct	Rebounds off def tot	avg	pf	a	t/o	blk	stl	pts	avg
at Houston	11/09/18	1	1-3	.333	0-0	.000	0-0	.000	1 0 1	1.0	0	0	0	0	0	0	2	2.0
APPALACHIAN ST.	11/11/18	2	0-0	.000	0-0	.000	0-0	.000	0 1 1	1.0	1	1	0	0	0	0	0	1.0
WESTERN CARO.	11/14/18	2	0-0	.000	0-0	.000	0-0	.000	0 0 0	0.7	0	0	0	0	0	0	0	0.7
ALABAMA ST.	12/05/18	3	0-0	.000	0-0	.000	0-0	.000	0 1 1	0.8	1	0	0	0	0	0	0	0.5
KENNESAW ST.	12/16/18	2	0-0	.000	0-0	.000	0-0	.000	0 0 0	0.6	0	0	0	0	0	0	0	0.4
vs DAYTON	12/21/18	1	0-0	.000	0-0	.000	0-0	.000	0 0 0	0.5	2	0	0	0	0	0	0	0.3
WOFFORD	12/30/18	2	0-0	.000	0-0	.000	0-0	.000	0 0 0	0.4	1	0	0	0	0	0	0	0.3
<b>Totals</b>		0	13	1-3	.333	0-0	.000	0-0	.000	1 2 3	0.4	5	1	0	0	0	2	0.3

Games played: 7

Minutes/game: 1.9

Points/game: 0.3

FG Pct: 33.3

Rebounds/game: 0.4

Assists/game: 0.1

Assist/turnover ratio: 99.9

**LORELA CUBAJ****#13****Sophomore • 6'4" • Forward • Terni, Italy • Istituto Paritario G. Parini****THE CUBAJ FILE**

Recorded first double-double of the season against Wofford (12/30), scoring 13 points and securing a season-best 12 rebounds, while dishing out a season-best five assists...Contributed eight points and six rebounds in Tech's win at Boston College (1/3), while dishing out four assists...Finished with seven points and seven rebounds against No. 2 Notre Dame (1/6) in 26 minutes of playing time...Notched her second double-double of the season against Duke (1/10) with 13 points and 11 rebounds and went a career-best 5-for-11 at the free throw line...Tied for the team-lead with 10 rebounds at No. 2 Louisville (1/13)...Missed a double-double against No. 12 Syracuse (1/20) with nine rebounds and seven points...Recorded fourth career double-double at UNC (1/31) behind 17 points and 12 rebounds, tying her season-high in scoring.

**KEY SEASON AVERAGES**

Points	Rebounds	Assists
<b>7.2</b>	<b>6.9</b>	<b>1.8</b>

**CAREER & SEASON HIGHS****Points**

Season: 17 at UNC (1/31/19)

Career: 17, 2x, last at UNC (1/31/19)

**Field Goals**

Season: 8 at UNC (1/31/19)

Career: 8, 2x, last at UNC (1/31/19)

**Field Goals Attempted**

Season: 13 vs. Georgia (11/18/18)

Career: 16 vs. Bethune-Cookman (3/15/18)

**3- Point Field Goals**

Season: 1 vs. Wofford (12/30/18)

Career: 1, 2x, last vs. Wofford (12/30/18)

**3- Point Field Goals Attempted**

Season: 1, 3x, last at Louisville (1/13/19)

Career: 2 vs. SC State (11/12/17)

**Free Throws**

Season: 5 vs. Duke (1/10/19)

Career: 5 vs. Duke (1/10/19)

**Free Throws Attempted**

Season: 11 vs. Duke (1/10/19)

Career: 11 vs. Duke (1/10/19)

**Rebounds**

Season: 12, 2x, last at UNC (1/31/19)

Career: 13 vs Bethune-Cookman (3/15/18)

**Assists**

Season: 5 vs. Wofford (12/30/18)

Career: 7 vs. Bethune-Cookman (3/15/18)

**Steals**

Season: 4 at Clemson (1/17/19)

Career: 5, twice

**Blocks**

Season: 3, 3x, last vs. Syracuse (1/20/19)

Career: 3, 5x, last vs. Syracuse (1/20/19)

**Turnovers**

Season: 5, 2x, last vs. Notre Dame (1/6/19)

Career: 5, 3x, last vs. Notre Dame (1/6/19)

**Minutes**

Season: 50 at Houston (11/9/18)

Career: 50 at Houston (11/9/18)

**Miscellaneous**

	Career	18-19
Double-Doubles:	4	3
Double Figure Points:	8	6
Double Figure Rebounds:	6	4
Led Team In Points/Rebs:	2/10	1/7
20+ Points:	-	-

**2018-19 GAME-BY-GAME**

				Total		3-Pointers		Free throws		Rebounds											
Opponent	Date	gs	min	fg-fga	pct	3fg-fga	pct	ft-fa	pct	off	def	tot	avg	pf	a	t/o	blk	stl	pts	avg	
at Houston	11/09/18	*	50	4-9	.444	0-0	.000	2-4	.500	0	9	9	9.0	3	1	5	0	1	10	10.0	
APPALACHIAN ST.	11/11/18	*	27	3-11	.273	0-0	.000	2-3	.667	1	6	7	8.0	3	4	2	1	2	8	9.0	
WESTERN CARO.	11/14/18	*	15	0-3	.000	0-0	.000	1-2	.500	2	6	8	8.0	3	3	2	0	2	1	6.3	
NO. 14 GEORGIA	11/18/18	*	34	5-13	.385	0-0	.000	3-4	.750	1	6	7	7.8	3	0	1	3	2	13	8.0	
vs GEORGE WASHINGTON	11/22/18	*	19	1-3	.333	0-0	.000	0-0	.000	1	1	2	6.6	4	0	1	0	1	2	6.8	
vs IDAHO STATE	11/23/18	*	12	0-1	.000	0-0	.000	0-0	.000	1	1	2	5.8	3	2	0	1	0	0	5.7	
at No. 7 Maryland	11/29/18	*	24	4-7	.571	0-0	.000	0-2	.000	0	6	6	5.9	4	3	4	0	2	8	6.0	
at GSU	12/2/18	*	20	1-2	.500	0-0	.000	0-0	.000	1	3	4	5.6	4	0	2	3	1	2	5.5	
ALABAMA ST.	12/05/18	*	20	5-8	.625	0-0	.000	0-0	.000	1	0	1	5.1	3	2	3	2	0	10	6.0	
KENNESAW ST.	12/16/18	*	18	2-4	.500	0-0	.000	0-0	.000	0	3	3	4.9	3	1	3	1	1	4	5.8	
vs Seton Hall	12/20/18	*	34	3-8	.375	0-1	.000	0-0	.000	2	6	8	5.2	2	2	4	1	3	6	5.8	
vs DAYTON	12/21/18	*	30	3-10	.300	0-0	.000	0-0	.000	2	7	9	5.5	3	1	1	2	2	6	5.8	
WOFFORD	12/30/18	*	28	6-9	.667	1-1	1.000	0-0	.000	5	7	12	6.0	3	5	1	2	1	13	6.4	
at Boston College	01/03/19	*	21	3-9	.333	0-0	.000	2-2	1.000	4	2	6	6.0	4	4	1	1	0	8	6.5	
NO. 2 NOTRE DAME	01/06/19	*	26	3-4	.750	0-0	.000	1-3	.333	2	5	7	6.1	3	1	5	1	1	7	6.5	
DUKE	01/10/19	*	31	4-7	.571	0-0	.000	5-11	.455	5	6	11	6.4	2	2	3	0	2	13	6.9	
at No. 2 Louisville	01/13/19	*	33	2-11	.182	0-1	.000	1-2	.500	5	5	10	6.6	5	1	4	0	2	5	6.8	
at Clemson	1/17/19	*	36	2-5	.400	0-0	.000	0-2	.000	4	2	6	6.6	4	0	2	1	4	4	6.7	
NO. 12 SYRACUSE	01/20/19	*	34	3-11	.273	0-0	.000	1-2	.500	3	6	9	6.7	3	3	2	3	0	7	6.7	
NO. 8 NC STATE	1/27/19	*	21	3-8	.375	0-0	.000	1-4	.250	3	3	6	6.7	5	2	2	0	0	7	6.7	
at North Carolina	01/31/19	*	34	8-11	.727	0-0	.000	1-2	.500	5	7	12	6.9	4	1	3	0	0	17	7.2	
Totals		21	567	65-154	.422	1-3	.333	20-43	.465	48	97	145	6.9	71	38	51	22	27	151	7.2	

Games played: 21

Minutes/game: 27.0

Points/game: 7.2

FG Pct: 42.2

3FG Pct: 33.3

FT Pct: 46.5

Rebounds/game: 6.9

Assists/game: 1.8

Turnovers/game: 2.4

Assist/turnover ratio: 0.7

Steals/game: 1.3

Blocks/game: 1.0

**ELIZABETH DIXON**

#22

Freshman • 6'5" • Forward • Memphis, Tenn. • Ridgeway

**THE DIXON FILE**

Collected her third double-double in her first ACC game at Boston College (1/3)...Finished with 12 points and 10 rebounds in the win...Tied her season-high of three blocks against No. 2 Notre Dame (1/6) and posted 12 points, seven rebounds and an assist against the defending national champions...Dominated in Tech's win over Duke (1/10), recording her fourth double-double with a career-high 22 points and personal-best 17 rebounds...Finished with four blocks and four assists in the win...Named the ACC Co-Rookie of the Week for the second time on Jan. 14 after her career performance against Duke...Led Tech with 17 points against No. 8 NC State (1/27), hitting six field goals and five free throws...Finished with five rebounds, an assist and a steal against the Wolfpack.

**KEY SEASON AVERAGES**

Points	Rebounds	Blocks
<b>9.7</b>	<b>6.7</b>	<b>1.1</b>

**CAREER & SEASON HIGHS****Points**

Career: 22 vs. Duke (1/10/19)

**Field Goals**

Career: 9 vs. Duke (1/10/19)

**Field Goals Attempted**

Career: 12, 2x, last vs. Notre Dame (1/6/19)

**3- Point Field Goals**

Career:

**3- Point Field Goals Attempted**

Career:

**Free Throws**

Career: 5, 2x, last vs. NC State (1/27/19)

**Free Throws Attempted**

Career: 8 vs. Alabama State (12/5/18)

**Rebounds**

Career: 17 vs. Duke (1/10/19)

**Assists**

Career: 4 vs. Duke (1/10/19)

**Steals**

Career: 4 vs. Alabama State (12/5/18)

**Blocks**

Career: 4 vs. Duke (1/10/19)

**Turnovers**

Career: 7, 2x, last vs. Western Carolina (11/14/18)

**Minutes**

Career: 43 at Houston (11/9/18)

**Miscellaneous**

	Career	18-19
Double-Doubles:	4	4
Double Figure Points:	12	12
Double Figure Rebounds:	4	4
Led Team In Points/Rebs:	3/6	3/6
20+ Points:	-	-

**2018-19 GAME-BY-GAME**

				Total		3-Pointers		Free throws		Rebounds											
Opponent	Date	gs	min	fg-fga	pct	3fg-fga	pct	ft-fa	pct	off	def	tot	avg	pf	a	t/o	blk	stl	pts	avg	
at Houston	11/09/18	*	43	7-9	.778	0-0	.000	0-1	.000	3	6	9	9.0	5	1	7	1	0	14	14.0	
APPALACHIAN ST.	11/11/18	*	28	0-4	.000	0-0	.000	4-4	1.000	3	1	4	6.5	0	1	1	2	1	4	9.0	
WESTERN CARO.	11/14/18	*	29	4-10	.400	0-0	.000	5-5	1.000	6	4	10	7.7	2	1	7	2	2	13	10.3	
NO. 14 GEORGIA	11/18/18	*	27	4-7	.571	0-0	.000	2-2	1.000	5	6	11	8.5	3	1	2	0	1	10	10.3	
vs GEORGE WASHINGTON	11/22/18	*	21	5-5	1.000	0-0	.000	2-3	.667	5	2	7	8.2	5	0	2	1	1	12	10.6	
vs IDAHO STATE	11/23/18	*	30	8-8	1.000	0-0	.000	2-3	.667	6	3	9	8.3	3	3	3	0	0	18	11.8	
at No. 7 Maryland	11/29/18	*	15	1-2	.500	0-0	.000	0-0	.000	0	2	2	7.4	3	0	1	0	0	2	10.4	
at GSU	12/2/18	*	18	3-5	.600	0-0	.000	2-2	1.000	1	0	1	6.6	4	0	4	1	0	8	10.1	
ALABAMA ST.	12/05/18	*	23	2-7	.286	0-0	.000	3-8	.375	3	4	7	6.7	1	1	0	2	4	7	9.8	
KENNESAW ST.	12/16/18	*	31	5-12	.417	0-0	.000	2-2	1.000	6	3	9	6.9	1	1	2	3	1	12	10.0	
vs Seton Hall	12/20/18	*	19	5-7	.714	0-0	.000	3-5	.600	4	3	7	6.9	3	0	0	1	0	13	10.3	
vs DAYTON	12/21/18	*	27	4-9	.444	0-0	.000	0-0	.000	4	3	7	6.9	3	3	3	2	1	8	10.1	
WOFFORD	12/30/18	*	15	4-9	.444	0-0	.000	2-5	.400	0	2	2	6.5	5	2	4	0	1	10	10.1	
at Boston College	01/03/19	*	23	4-9	.444	0-0	.000	4-6	.667	6	4	10	6.8	3	0	3	0	0	12	10.2	
NO. 2 NOTRE DAME	01/06/19	*	36	6-12	.500	0-0	.000	0-0	.000	3	4	7	6.8	1	1	2	3	0	12	10.3	
DUKE	01/10/19	*	39	9-11	.818	0-0	.000	4-6	.667	4	13	17	7.4	3	4	3	4	0	22	11.1	
at No. 2 Louisville	01/13/19	*	14	1-6	.167	0-0	.000	1-1	1.000	3	3	6	7.4	3	0	1	0	0	3	10.6	
at Clemson	1/17/19	*	17	0-0	.000	0-0	.000	0-0	.000	1	2	3	7.1	0	0	3	0	0	0	10.0	
NO. 12 SYRACUSE	01/20/19	*	12	0-2	.000	0-0	.000	1-2	.500	1	0	1	6.8	4	0	1	0	0	1	9.5	
NO. 8 NC STATE	1/27/19	*	37	6-9	.667	0-0	.000	5-6	.833	3	2	5	6.7	3	1	2	0	1	17	9.9	
at North Carolina	01/31/19	*	29	2-10	.200	0-0	.000	2-4	.500	5	2	7	6.7	0	1	1	1	0	6	9.7	
Totals		21	533	80-153	.523	0-0	.000	44-65	.677	72	69	141	6.7	55	21	52	23	13	204	9.7	

Games played: 21  
Minutes/game: 25.4  
Points/game: 9.7  
FG Pct: 52.3  
FT Pct: 67.7

Rebounds/game: 6.7  
Assists/game: 1.0  
Turnovers/game: 2.5  
Assist/turnover ratio: 0.4  
Steals/game: 0.6  
Blocks/game: 1.1

**D'ASIA GREGG****#23****Freshman • 6'2" • Forward • Florence, S.C. • Wilson****THE GREGG FILE**

Made collegiate debut against App State (11/11), playing five minutes and going on a 6-0 run to finish with six points and one rebound...Took the floor for 10 minutes against Western Carolina (11/14)...Saw five minutes of action at No. 7 Maryland (11/29) in the ACC/Big Ten Challenge...Came off the bench at Georgia State (12/1) to post a breakout performance...Finished with 15 points on 8-of-10 free throws, seven rebounds, two assists and a steal against the Panthers...Hit a personal-best two three-pointers against Seton Hall (12/20) in the opening game of the West Palm Beach Invitational...Played nine minutes against Wofford (12/30) and posted eight points on two three-pointers...Saw seven minutes of playing time in her first ACC game at Boston College (1/3) and hit a field goal and secured a rebound.

**KEY SEASON AVERAGES**

Points      Rebounds      Assists  
**3.1**      **1.4**      **0.3**

**CAREER & SEASON HIGHS****Points**

Career: 15 at Georgia State (12/2/18)

**Field Goals**

Career: 3, 4x, last vs. Wofford (12/30/18)

**Field Goals Attempted**

Career: 7 at Georgia State (12/2/18)

**3- Point Field Goals**

Career: 2, 2x, last vs. Wofford (12/30/18)

**3- Point Field Goals Attempted**

Career: 3, 2x, last vs. Wofford (12/30/18)

**Free Throws**

Career: 8 at Georgia State (12/2/18)

**Free Throws Attempted**

Career: 10 at Georgia State (12/2/18)

**Rebounds**

Career: 7 at Georgia State (12/2/18)

**Assists**

Career: 2 at Georgia State (12/2/18)

**Steals**

Career: 2 vs. Kennesaw State (12/16/18)

**Blocks**

Career:

**Turnovers**

Career: 3 vs. Alabama State (12/5/18)

**Minutes**

Career: 24 at Georgia State (12/2/18)

**Miscellaneous**

	Career	18-19
Double-Doubles:	-	-
Double Figure Points:	1	1
Double Figure Rebounds:	-	-
Led Team In Points/Rebs:	0/1	0/1
20+ Points:	-	-

**2018-19 GAME-BY-GAME**

				Total		3-Pointers		Free throws		Rebounds											
Opponent	Date	gs	min	fg-fga	pct	3fg-fga	pct	ft-fa	pct	off	def	tot	avg	pf	a	t/o	blk	stl	pts	avg	
APPALACHIAN ST.	11/11/18	5	3-4	.750	0-0	.000	0-0	.000	0-0	1	0	1	1.0	0	1	0	0	0	6	6.0	
WESTERN CARO.	11/14/18	10	0-2	.000	0-1	.000	0-0	.000	0-0	0	2	2	1.5	0	1	0	1	0	0	3.0	
vs GEORGE WASHINGTO	11/22/18	1	0-0	.000	0-0	.000	0-0	.000	0-0	0	0	0	1.0	0	0	0	0	0	0	2.0	
at No. 7 Maryland	11/29/18	5	0-2	.000	0-0	.000	0-0	.000	0-0	0	1	1	1.0	0	0	0	0	0	0	1.5	
at GSU	12/2/18	24	3-7	.429	1-3	.333	8-10	.800	4	3	7	2.2	2	2	1	0	0	1	15	4.2	
ALABAMA ST.	12/05/18	10	0-2	.000	0-0	.000	2-4	.500	2	1	3	2.3	1	1	3	0	0	2	3.8		
KENNESAW ST.	12/16/18	12	3-6	.500	0-1	.000	0-0	.000	2	1	3	2.4	1	0	0	0	0	2	6	4.1	
vs Seton Hall	12/20/18	6	2-5	.400	2-2	1.000	0-0	.000	1	0	1	2.3	0	0	0	0	0	0	6	4.4	
vs DAYTON	12/21/18	7	0-2	.000	0-1	.000	0-0	.000	1	0	1	2.1	0	0	0	0	0	0	0	3.9	
WOFFORD	12/30/18	9	3-4	.750	2-3	.667	0-0	.000	0	1	1	2.0	1	0	0	0	0	0	8	4.3	
at Boston College	01/03/19	7	1-1	1.000	0-0	.000	0-0	.000	0	1	1	1.9	2	0	2	0	1	2	4.1		
NO. 2 NOTRE DAME	01/06/19	1	0-0	.000	0-0	.000	0-0	.000	0	0	0	1.8	0	0	0	0	0	0	0	3.8	
at Clemson	1/17/19	2	0-0	.000	0-0	.000	1-2	.500	0	0	0	1.6	0	0	1	0	0	1	3.5		
NO. 12 SYRACUSE	01/20/19	1	0-0	.000	0-0	.000	0-0	.000	0	0	0	1.5	1	0	1	0	0	0	0	3.3	
at North Carolina	01/31/19	10	0-0	.000	0-0	.000	0-0	.000	0	0	0	1.4	3	0	0	0	0	0	0	3.1	
Totals		0	110	15-35	.429	5-11	.455	11-16	.688	11	10	21	1.4	11	4	10	0	5	46	3.1	

Games played: 15

Minutes/game: 7.3

Points/game: 3.1

FG Pct: 42.9

3FG Pct: 45.5

FT Pct: 68.8

Rebounds/game: 1.4

Assists/game: 0.3

Turnovers/game: 0.7

Assist/turnover ratio: 0.4

Steals/game: 0.3

**CHANIN SCOTT****#24****Junior • 6'0" • Guard • Charlotte, N.C. • Myers Park High School****THE SCOTT FILE**

Saw first action of the season, after sitting out due to injury, against Western Carolina (11/14), adding four points in 10 minutes...Contributed eight points against No. 14 Georgia (11/18) in 23 minutes of action...Helped Tech to victory over Idaho State (11/23) in the Cancun Challenge, chipping in 12 points...Scored a season-high 14 points at Georgia State (12/2), helping Tech to victory...Posted second-straight game with 14 points against Alabama State (12/5), going 6-for-9 from the field to match her season-high in scoring...Secured nine rebounds against Wofford (12/30) to conclude non-conference play, while dishing out four assists...Played 27 minutes at Boston College (1/3) to help Tech to a win in its first ACC game...Posted six points and seven rebounds against the Eagles...Added 10 points to the scoreboard at UNC (1/31), playing a season-high 30 minutes.

**KEY SEASON AVERAGES**

Points **5.8** Rebounds **3.3** Steals **1.1**

**CAREER & SEASON HIGHS****Points**

Season: 14, 2x, last vs. Alabama State (12/5/18)

Career: 17, 2x, last vs. Southern Miss (12/21/17)

**Field Goals**

Season: 7 at Georgia State (12/2/18)

Career: 7, 4x, last at Georgia State (12/2/18)

**Field Goals Attempted**

Season: 12 vs. Georgia (11/18/18)

Career: 13 at Kennesaw State (11/16/16)

**3- Point Field Goals**

Season:

Career: 3 vs. Southern Miss (12/21/17)

**3- Point Field Goals Attempted**

Season: 1, 4x, last vs. NC State (1/27/19)

Career: 3, 3x, last at Notre Dame (2/11/18)

**Free Throws**

Season: 6 vs. Idaho State (11/23/18)

Career: 6 vs. Idaho State (11/23/18)

**Free Throws Attempted**

Season: 8 vs. Idaho State (11/23/18)

Career: 8 vs. Idaho State (11/23/18)

**Rebounds**

Season: 9 vs. Wofford (12/30/18)

Career: 13 at Princeton (11/19/17)

**Assists**

Season: 4 vs. Wofford (12/30/18)

Career: 4 vs. Wofford (12/30/18)

**Steals**

Season: 6 vs. GW (11/22/18)

Career: 6 vs. GW (11/22/18)

**Blocks**

Season: 1 at UNC (1/31/19)

Career: 3 vs. Clemson (12/31/17)

**Turnovers**

Season: 5 at Boston College (1/3/19)

Career: 5, 2x, last at Boston College (1/3/19)

**Minutes**

Season: 30 at UNC (1/31/19)

Career: 31, twice, last at Georgia (12/17/17)

**Miscellaneous**

	Career	18-19
Double-Doubles:	2	-
Double Figure Points:	21	4
Double Figure Rebounds:	3	-
Led Team In Points/Rebs:	5/1	-
20+ Points:	-	-

**2018-19 GAME-BY-GAME**

				Total		3-Pointers		Free throws		Rebounds											
Opponent	Date	gs	min	fg-fga	pct	3fg-fga	pct	ft-fla	pct	off	def	tot	avg	pf	a	t/o	blk	stl	pts	avg	
WESTERN CARO.	11/14/18	10		2-6	.333	0-1	.000	0-0	.000	1	1	2	2.0	3	0	1	0	0	4	4.0	
NO. 14 GEORGIA	11/18/18	23		4-12	.333	0-1	.000	0-0	.000	2	1	3	2.5	3	1	0	0	1	8	6.0	
vs GEORGE WASHINGTO	11/22/18	21		4-6	.667	0-0	.000	0-2	.000	1	0	1	2.0	0	1	0	0	6	8	6.7	
vs IDAHO STATE	11/23/18	21		3-4	.750	0-0	.000	6-8	.750	1	3	4	2.5	2	1	2	0	1	12	8.0	
at No. 7 Maryland	11/29/18	7		0-3	.000	0-1	.000	0-0	.000	0	0	0	2.0	0	0	1	0	0	0	6.4	
at GSU	12/2/18	19		7-8	.875	0-0	.000	0-0	.000	1	2	3	2.2	3	0	1	0	2	14	7.7	
ALABAMA ST.	12/05/18	18		6-9	.667	0-0	.000	2-3	.667	1	1	2	2.1	1	1	0	0	2	14	8.6	
KENNESAW ST.	12/16/18	18		3-4	.750	0-0	.000	1-3	.333	1	0	1	2.0	3	1	4	0	1	7	8.4	
vs Seton Hall	12/20/18	28		3-6	.500	0-0	.000	0-0	.000	3	2	5	2.3	2	2	2	0	0	6	8.1	
vs DAYTON	12/21/18	15		3-4	.750	0-0	.000	2-2	1.000	1	3	4	2.5	2	0	1	0	1	8	8.1	
WOFFORD	12/30/18	16		1-7	.143	0-0	.000	0-0	.000	4	5	9	3.1	2	4	3	0	1	2	7.5	
at Boston College	01/03/19	27		3-8	.375	0-0	.000	0-0	.000	4	3	7	3.4	2	1	5	0	0	6	7.4	
NO. 2 NOTRE DAME	01/06/19	21		1-5	.200	0-0	.000	0-0	.000	2	1	3	3.4	1	3	2	0	2	2	7.0	
DUKE	01/10/19	12		1-3	.333	0-0	.000	0-0	.000	1	0	1	3.2	2	1	0	0	0	2	6.6	
at No. 2 Louisville	01/13/19	23		2-4	.500	0-0	.000	0-0	.000	2	3	5	3.3	3	0	4	0	0	4	6.5	
at Clemson	1/17/19	19		0-1	.000	0-0	.000	1-2	.500	1	5	6	3.5	1	2	3	0	1	1	6.1	
NO. 12 SYRACUSE	01/20/19	5		0-0	.000	0-0	.000	0-0	.000	0	0	0	3.3	2	1	0	0	0	0	5.8	
NO. 8 NC STATE	1/27/19	15		1-3	.333	0-1	.000	1-2	.500	2	1	3	3.3	2	0	0	0	1	3	5.6	
at North Carolina	01/31/19	30		4-7	.571	0-0	.000	2-2	1.000	2	2	4	3.3	5	1	4	1	1	10	5.8	
Totals		0	348	48-100	.480	0-4	.000	15-24	.625	30	33	63	3.3	39	20	33	1	20	111	5.8	

Games played: 19

Minutes/game: 18.3

Points/game: 5.8

FG Pct: 48.0

3FG Pct: 0.0

FT Pct: 62.5

Rebounds/game: 3.3

Assists/game: 1.1

Turnovers/game: 1.7

Assist/turnover ratio: 0.6

Steals/game: 1.1

Blocks/game: 0.1

**LOTTA-MAJ LAHTINEN**

#31

Freshman • 5'7" • Guard • Helsinki, Finland • Makelanrinne Sports

**THE LAHTINEN FILE**

Took the floor in her first collegiate outing at Houston (11/9), contributing three points, three steals and two assists...Chipped in nine points against Western Carolina (11/14)...Saw 28 minutes of action at No. 7 Maryland (11/29) in the ACC/Big Ten Challenge, posting eight points, six steals and four assists...Came off the bench for 19 minutes against Alabama State (12/5), swiping three steals and dish out three assists to help Tech to victory...Added seven points in Tech's win at Boston College (1/3), hitting a three-pointer and two free throws, while collecting three steals...Added three points, connecting on a triple, against No. 2 Notre Dame (1/6)...Scored 10 points in the third quarter at Clemson (1/17) to record a then-personal-best in scoring...Hit two three-pointers against the Tigers, also marking a personal-high...Earned her first collegiate start against No. 12 Syracuse (1/20) and recorded a career-high six rebounds...Recorded her first collegiate block against NC State (1/27)...Contributed 14 points at UNC (1/31), going a perfect 6-for-6 from the free throw line and connecting on 4-of-8 from the field.

**KEY SEASON AVERAGES**

Points	Rebounds	Assists
<b>4.7</b>	<b>1.9</b>	<b>2.1</b>

**CAREER & SEASON HIGHS****Points**

Career: 14 at UNC (1/31/19)

**Field Goals**

Career: 4, 4x, last at UNC (1/31/19)

**Field Goals Attempted**

Career: 11 at Louisville (1/13/19)

**3- Point Field Goals**

Career: 2 at Clemson (1/17/19)

**3- Point Field Goals Attempted**

Career: 4 vs. Alabama State (12/5/18)

**Free Throws**

Career: 6 at UNC (1/31/19)

**Free Throws Attempted**

Career: 6 at UNC (1/31/19)

**Rebounds**

Career: 6 vs. Syracuse (1/20/19)

**Assists**

Career: 5 vs. Kennesaw State (12/16/18)

**Steals**

Career: 6 at Maryland (11/29/18)

**Blocks**

Career: 1 vs. NC State (1/27/19)

**Turnovers**

Career: 8 at Houston (11/9/18)

**Minutes**

Career: 38 vs. Syracuse (1/20/19)

**Miscellaneous**

	Career	18-19
Double-Doubles:	-	-
Double Figure Points:	2	2
Double Figure Rebounds:	-	-
Led Team In Points/Rebs:	-	-
20+ Points:	-	-

**2018-19 GAME-BY-GAME**

				Total		3-Pointers		Free throws		Rebounds											
Opponent	Date	gs	min	fg-fga	pct	3fg-fga	pct	ft-fa	pct	off	def	tot	avg	pf	a	t/o	blk	stl	pts	avg	
at Houston	11/09/18	19		1-3	.333	0-0	.000	1-4	.250	0	0	0	0.0	5	2	8	0	3	3	3.0	
APPALACHIAN ST.	11/11/18	19		2-5	.400	1-3	.333	0-0	.000	1	1	2	1.0	0	2	0	0	2	5	4.0	
WESTERN CARO.	11/14/18	15		4-6	.667	1-2	.500	0-0	.000	3	0	3	1.7	0	3	1	0	0	9	5.7	
NO. 14 GEORGIA	11/18/18	5		0-0	.000	0-0	.000	0-0	.000	0	0	0	0.0	1	0	0	0	0	0	4.3	
vs GEORGE WASHINGTON	11/22/18	14		2-5	.400	0-0	.000	0-0	.000	1	2	3	1.6	0	0	3	0	0	4	4.2	
vs IDAHO STATE	11/23/18	20		1-3	.333	0-0	.000	0-0	.000	0	1	1	1.5	1	0	0	0	2	2	3.8	
at No. 7 Maryland	11/29/18	28		4-9	.444	0-0	.000	0-0	.000	0	2	2	1.6	2	4	1	0	6	8	4.4	
at GSU	12/2/18	27		1-4	.250	0-0	.000	4-4	1.000	2	0	2	1.6	3	4	3	0	1	6	4.6	
ALABAMA ST.	12/05/18	19		2-8	.250	1-4	.250	0-0	.000	1	1	2	1.7	4	3	0	0	3	5	4.7	
KENNESAW ST.	12/16/18	17		1-3	.333	1-3	.333	0-0	.000	1	1	2	1.7	2	5	0	0	1	3	4.5	
vs Seton Hall	12/20/18	11		1-3	.333	0-0	.000	0-0	.000	0	0	0	1.5	3	3	2	0	0	2	4.3	
vs DAYTON	12/21/18	12		2-3	.667	0-0	.000	1-2	.500	1	0	1	1.5	5	2	3	0	2	5	4.3	
WOFFORD	12/30/18	14		1-2	.500	0-0	.000	1-2	.500	3	1	4	1.7	2	3	3	0	2	3	4.2	
at Boston College	01/03/19	25		2-6	.333	1-1	1.000	2-2	1.000	0	1	1	1.6	2	1	2	0	3	7	4.4	
NO. 2 NOTRE DAME	01/06/19	8		1-2	.500	1-1	1.000	0-0	.000	0	0	0	1.5	0	0	1	0	0	3	4.3	
DUKE	01/10/19	5		0-2	.000	0-2	.000	0-0	.000	0	0	0	1.4	0	0	1	0	0	0	4.1	
at No. 2 Louisville	01/13/19	23		3-11	.273	1-2	.500	1-2	.500	1	2	3	1.5	1	1	2	0	1	8	4.3	
at Clemson	1/17/19	23		4-8	.500	2-3	.667	0-0	.000	0	1	1	1.5	5	1	2	0	2	10	4.6	
NO. 12 SYRACUSE	01/20/19	*	38	1-7	.143	0-1	.000	0-0	.000	3	3	6	1.7	4	3	4	0	3	2	4.5	
NO. 8 NC STATE	1/27/19	*	22	0-3	.000	0-3	.000	0-0	.000	0	2	2	1.8	2	4	2	1	0	0	4.3	
at North Carolina	01/31/19	24		4-8	.500	0-1	.000	6-6	1.000	3	2	5	1.9	4	4	3	0	0	14	4.7	
Totals		2	388	37-101	.366	9-26	.346	16-22	.727	20	20	40	1.9	46	45	41	1	31	99	4.7	

Games played: 21  
 Minutes/game: 18.5  
 Points/game: 4.7  
 FG Pct: 36.6  
 3FG Pct: 34.6  
 FT Pct: 72.7

Rebounds/game: 1.9  
 Assists/game: 2.1  
 Turnovers/game: 2.0  
 Assist/turnover ratio: 1.1  
 Steals/game: 1.5  
 Blocks/game: 0.0



## FRANCESCA PAN

## #33

Junior • 6'1" • Guard • Bassano del Grappa, Italy • Istituto G. Parini Mestre

### THE PAN FILE

Poured in 22 points in the season-opener at Houston (11/9)...Followed with a 17-point performance in Tech's win over App State (11/11)...Led team in scoring with game-high 19 points against Western Carolina (11/14)...Scored nine points against No. 14 Georgia (11/18) to help the Jackets uproot the in-state rival... Named to the All-Tournament team in the Cancun Challenge...Hit the 1,000-career point mark against Idaho State (11/23) in Cancun, finishing with 18 points... Added 11 points in Tech's win over Alabama State (12/5), hitting three three-pointers...Contributed 10 points and four rebounds in win over Seton Hall (12/20) in the opening game of the West Palm Beach Invitational...Led Tech with 18 points against Dayton (12/21), attempting a season-high 21 shots from the field... Contributed 10 points in Tech's win at Boston College (1/3) and finished with two assists and a steal...Recorded 10 points, a steal, a block and an assist against No. 2 Notre Dame (1/6)...Recorded first collegiate double-double with 11 points and 10 rebounds against No. 12 Syracuse (1/20).

### KEY SEASON AVERAGES

Points **11.8** Rebounds **4.3** Steals **2.0**

### CAREER & SEASON HIGHS

#### Points

Season: 22, 2x, last at Georgia State (12/2/18)

Career: 26 at Syracuse (1/4/18)

#### Field Goals

Season: 10 at Houston (11/9/18)

Career: 10, 2x, last at Houston (11/9/18)

#### Field Goals Attempted

Season: 21 vs. Dayton (12/21/18)

Career: 23, 3x, last vs. Clemson (2/28/18)

#### 3- Point Field Goals

Season: 4, 2x, last at Georgia State (12/2/18)

Career: 5, 2x, last at Syracuse (1/4/18)

#### 3- Point Field Goals Attempted

Season: 10 vs. Dayton (12/21/18)

Career: 14 vs. UNC (2/15/18)

#### Free Throws

Season: 4, 3x, last vs. Wofford (12/30/18)

Career: 7, 4x, last at Florida State (2/25/18)

#### Free Throws Attempted

Season: 6 vs. Wofford (12/30/18)

Career: 10, 2x, last at Syracuse (1/4/18)

#### Rebounds

Season: 10 vs. Syracuse (1/20/19)

Career: 10 vs. Syracuse (1/20/19)

#### Assists

Season: 3, 4x, last vs. Duke (1/10/19)

Career: 4, 5x, last vs. UNC (2/15/18)

#### Steals

Season: 6 vs. Western Carolina (11/14/18)

Career: 6, 2x, last vs. WCU (11/14/18)

#### Blocks

Season: 2 vs. Wofford (12/30/18)

Career: 3 vs. Alabama State (11/13/16)

#### Turnovers

Season: 8, 2x, last at Georgia State (12/2/18)

Career: 8, 2x, last at Georgia State (12/2/18)

#### Minutes

Season: 40 vs. Dayton (12/21/18)

Career: 50 vs. Michigan (4/1/17)

### Miscellaneous

	Career	18-19
Double-Doubles:	1	1
Double Figure Points:	61	13
Double Figure Rebounds:	1	1
Led Team In Points/Rebs:	25/3	4/2
20+ Points:	14	2

### 2018-19 GAME-BY-GAME

Opponent	Date	gs	min	Total		3-Pointers		Free throws		Rebounds				pf	a	t/o	blk	stl	pts	avg	
				fg-fga	pct	3fg-fga	pct	ft-fga	pct	off	def	tot	avg								
at Houston	11/09/18	*	35	10-17	.588	2-6	.333	0-0	.000	1	5	6	6.0	5	2	8	0	1	22	22.0	
APPALACHIAN ST.	11/11/18	*	36	6-14	.429	3-7	.429	2-2	1.000	1	2	3	4.5	2	3	0	0	4	17	19.5	
WESTERN CARO.	11/14/18	*	25	6-13	.462	4-9	.444	3-5	.600	1	5	6	5.0	1	3	3	0	6	19	19.3	
NO. 14 GEORGIA	11/18/18	*	36	2-12	.167	1-6	.167	4-4	1.000	1	6	7	5.5	3	1	5	0	4	9	16.8	
vs GEORGE WASHINGTON	11/22/18	*	37	5-16	.313	2-8	.250	3-3	1.000	0	8	8	6.0	1	3	3	0	1	15	16.4	
vs IDAHO STATE	11/23/18	*	34	7-17	.412	2-5	.400	2-2	1.000	0	5	5	5.8	2	1	2	1	1	18	16.7	
at No. 7 Maryland	11/29/18	*	38	3-14	.214	3-9	.333	0-0	.000	0	5	5	5.7	3	0	3	1	3	9	15.6	
at GSU	12/2/18	*	31	7-15	.467	4-8	.500	4-4	1.000	0	5	5	5.6	2	2	8	1	4	22	16.4	
ALABAMA ST.	12/05/18	*	22	4-12	.333	3-7	.429	0-0	.000	1	5	6	5.7	4	2	0	0	1	11	15.8	
KENNESAW ST.	12/16/18	*	31	4-14	.286	0-5	.000	0-0	.000	1	3	4	5.5	0	2	2	0	4	8	15.0	
vs Seton Hall	12/20/18	*	30	4-10	.400	2-5	.400	0-0	.000	1	3	4	5.4	5	1	4	0	1	10	14.5	
vs DAYTON	12/21/18	*	40	7-21	.333	3-10	.300	1-1	1.000	1	5	6	5.4	3	2	1	1	1	18	14.8	
WOFFORD	12/30/18	*	27	1-9	.111	1-6	.167	4-6	.667	1	3	4	5.3	0	1	1	2	1	7	14.2	
at Boston College	01/03/19	*	30	4-10	.400	1-5	.200	1-2	.500	0	3	3	5.1	2	2	2	0	1	10	13.9	
NO. 2 NOTRE DAME	01/06/19	*	34	4-14	.286	2-7	.286	0-0	.000	1	1	2	4.9	3	1	3	1	1	10	13.7	
DUKE	01/10/19	*	38	3-14	.214	2-8	.250	0-0	.000	0	1	1	4.7	0	3	1	0	3	8	13.3	
at No. 2 Louisville	01/13/19	*	20	1-5	.200	1-2	.500	2-2	1.000	0	0	0	4.4	4	0	2	0	0	5	12.8	
at Clemson	1/17/19	*	30	3-12	.250	1-5	.200	2-2	1.000	1	3	4	4.4	2	1	3	1	0	9	12.6	
NO. 12 SYRACUSE	01/20/19		32	4-9	.444	2-6	.333	1-2	.500	1	9	10	4.7	2	1	2	0	3	11	12.5	
NO. 8 NC STATE	1/27/19		31	4-13	.308	2-7	.286	0-0	.000	0	1	1	4.5	5	2	0	0	1	10	12.4	
at North Carolina	01/31/19		4	0-2	.000	0-2	.000	0-0	.000	0	0	0	4.3	1	1	0	0	0	0	11.8	
Totals			18	641	89-263	.338	41-133	.308	29-35	.829	12	78	90	4.3	50	34	53	8	41	248	11.8

Games played: 21  
Minutes/game: 30.5  
Points/game: 11.8  
FG Pct: 33.8  
3FG Pct: 30.8  
FT Pct: 82.9

Rebounds/game: 4.3  
Assists/game: 1.6  
Turnovers/game: 2.5  
Assist/turnover ratio: 0.6  
Steals/game: 2.0  
Blocks/game: 0.4

**KIERRA FLETCHER**

#41

Sophomore • 5'9" • Guard • Warren, Mich. • Warren Cousino High School

**THE FLETCHER FILE**

Tied for team-high in scoring at Boston College (1/3) with 18 points, hitting five field goals and going a perfect 8-for-8 at the free throw line...Tied her career-high with six assists against No. 2 Notre Dame (1/6) and finished with seven points and six rebounds...Tied her career-high with six assists in Tech's win over Duke (1/10)...Contributed 13 points at Clemson (1/17), connecting of 7-of-10 from the free throw line and led the team in rebounding with seven...Dropped a team-high 22 points against No. 12 Syracuse (1/20) to lead Tech's offense in the win and nearly missed a double-double with nine rebounds...Recorded a career-best seven assists against the Orange and hit a personal-high 10 free throws in the win.

**KEY SEASON AVERAGES**

Points	Rebounds	Steals
<b>9.3</b>	<b>5.6</b>	<b>1.8</b>

**CAREER & SEASON HIGHS****Points**

Season: 25 at Houston (11/9/18)

Career: 25 at Houston (11/9/18)

**Field Goals**

Season: 10 at Houston (11/9/18)

Career: 10 at Houston (11/9/18)

**Field Goals Attempted**

Season: 14 at Houston (11/9/18)

Career: 15, twice

**3- Point Field Goals**

Season:

Career:

**3- Point Field Goals Attempted**

Season: 1 vs. Georgia (11/18/18)

Career: 1, twice

**Free Throws**

Season: 10 vs. Syracuse (1/20/19)

Career: 10 vs. Syracuse (1/20/19)

**Free Throws Attempted**

Season: 11, 2x, last vs. Syracuse (1/20/19)

Career: 11, 2x, last vs. Syracuse (1/20/19)

**Rebounds**

Season: 14 vs. Seton Hall (12/20/18)

Career: 14 vs. Seton Hall (12/20/18)

**Assists**

Season: 7 vs. Syracuse (1/20/19)

Career: 7 vs. Syracuse (1/20/19)

**Steals**

Season: 4, 2x, last vs. Duke (1/10/19)

Career: 7 vs. Miami (2/22/18)

**Blocks**

Season: 2 vs. Seton Hall (12/20/18)

Career: 2, 3x, last vs. Seton Hall (12/20/18)

**Turnovers**

Season: 7 at Houston (11/9/18)

Career: 7, 2x, last at Houston (11/9/18)

**Minutes**

Season: 48 at Houston (11/9/18)

Career: 48 at Houston (11/9/18)

**Miscellaneous**

	Career	18-19
Double-Doubles:	1	1
Double Figure Points:	19	8
Double Figure Rebounds:	2	1
Led Team In Points/Rebs:	5/5	4/3
20+ Points:	2	2

**2018-19 GAME-BY-GAME**

Opponent	Date	gs	min	Total		3-Pointers		Free throws		Rebounds											
				fg-fga	pct	3fg-fga	pct	ft-fa	pct	off	def	tot	avg	pf	a	t/o	blk	stl	pts	avg	
at Houston	11/09/18	*	48	10-14	.714	0-0	.000	5-11	.455	3	4	7	7.0	4	2	7	0	2	25	25.0	
APPALACHIAN ST.	11/11/18	*	29	5-8	.625	0-0	.000	0-1	.000	3	5	8	7.5	2	4	2	0	2	10	17.5	
WESTERN CARO.	11/14/18	*	23	2-4	.500	0-0	.000	1-1	1.000	2	1	3	6.0	3	1	1	0	2	5	13.3	
NO. 14 GEORGIA	11/18/18	*	40	2-11	.182	0-1	.000	6-8	.750	1	4	5	5.8	3	3	3	0	4	10	12.5	
vs GEORGE WASHINGTON	11/22/18	*	30	2-7	.286	0-0	.000	2-4	.500	2	3	5	5.6	1	2	0	0	1	6	11.2	
vs IDAHO STATE	11/23/18	*	26	1-6	.167	0-0	.000	4-4	1.000	0	2	2	5.0	2	0	1	0	1	6	10.3	
at No. 7 Maryland	11/29/18	*	35	5-9	.556	0-0	.000	4-4	1.000	0	1	1	4.4	4	0	3	1	3	14	10.9	
at GSU	12/2/18	*	31	3-7	.429	0-0	.000	1-2	.500	3	4	7	4.8	4	2	2	0	3	7	10.4	
ALABAMA ST.	12/05/18	*	17	0-3	.000	0-0	.000	0-0	.000	2	4	6	4.9	0	2	1	0	1	0	9.2	
KENNESAW ST.	12/16/18	*	20	1-2	.500	0-0	.000	0-3	.000	3	2	5	4.9	1	3	6	0	3	2	8.5	
vs Seton Hall	12/20/18	*	34	3-8	.375	0-0	.000	5-6	.833	3	11	14	5.7	3	5	4	2	2	11	8.7	
vs DAYTON	12/21/18	*	30	1-4	.250	0-0	.000	2-4	.500	2	1	3	5.5	5	0	0	0	1	4	8.3	
WOFFORD	12/30/18	*	24	4-6	.667	0-0	.000	1-2	.500	2	4	6	5.5	3	2	1	0	2	9	8.4	
at Boston College	01/03/19	*	24	5-12	.417	0-0	.000	8-8	1.000	2	3	5	5.5	2	0	4	0	0	18	9.1	
NO. 2 NOTRE DAME	01/06/19	*	36	1-8	.125	0-0	.000	5-6	.833	3	3	6	5.5	3	6	4	0	0	7	8.9	
DUKE	01/10/19	*	39	2-6	.333	0-0	.000	2-3	.667	3	5	8	5.7	2	6	4	0	4	6	8.8	
at No. 2 Louisville	01/13/19	*	34	2-12	.167	0-0	.000	0-0	.000	2	0	2	5.5	3	3	2	0	0	4	8.5	
at Clemson	1/17/19	*	37	3-11	.273	0-0	.000	7-10	.700	4	3	7	5.6	4	3	2	0	2	13	8.7	
NO. 12 SYRACUSE	01/20/19	*	40	6-12	.500	0-0	.000	10-11	.909	0	9	9	5.7	2	7	4	0	2	22	9.4	
NO. 8 NC STATE	1/27/19	*	39	4-12	.333	0-0	.000	1-2	.500	2	3	5	5.7	2	3	3	0	2	9	9.4	
at North Carolina	01/31/19	*	21	4-7	.571	0-0	.000	0-0	.000	0	3	3	5.6	4	0	1	0	0	8	9.3	
Totals		21	657	66-169	.391	0-1	.000	64-90	.711	42	75	117	5.6	57	54	55	3	37	196	9.3	

Games played: 21

Minutes/game: 31.3

Points/game: 9.3

FG Pct: 39.1

3FG Pct: 0.0

FT Pct: 71.1

Rebounds/game: 5.6

Assists/game: 2.6

Turnovers/game: 2.6

Assist/turnover ratio: 1.0

Steals/game: 1.8

Blocks/game: 0.1



## MARTINE FORTUNE

## #44

Senior • 6'3" • Forward • Philadelphia, Pa. • The Shipley School

### THE FORTUNE FILE

Pulled down a rebound against Western Carolina (11/14)...Hit a field goal, while also securing a rebound and a block against Idaho State (11/23) in the Cancun Challenge...Pulled down a season-high two rebounds in Tech's win over Alabama State (12/5) in four minutes of playing time...Took the floor against Wofford (12/30) and attempted a field goal.

### KEY SEASON AVERAGES

Points	Rebounds	Blocks
<b>0.3</b>	<b>1.0</b>	<b>0.1</b>

### CAREER & SEASON HIGHS

#### Points

Season: 2 vs. Idaho State (11/23/18)

Career: 10 vs. Southeastern Louisiana (11/18/15)

#### Field Goals

Season: 1 vs. Idaho State (11/23/18)

Career: 5 vs. Southeastern Louisiana (11/18/15)

#### Field Goals Attempted

Season: 1, 4x, last vs. Wofford (12/30/18)

Career: 7 vs. Southeastern Louisiana (11/18/15)

#### 3- Point Field Goals

Season:

Career:

#### 3- Point Field Goals Attempted

Season:

Career:

#### Free Throws

Season:

Career: 1 vs. Alabama State (11/13/16)

#### Free Throws Attempted

Season:

Career: 2 vs. Alabama State (11/13/16)

#### Rebounds

Season: 2, 2x, last vs. KSU (12/16/18)

Career: 10 vs. Southeastern Louisiana (11/18/15)

#### Assists

Season:

Career: 2 vs. Alabama State (11/24/15)

#### Steals

Season:

Career: 1 vs. Southeastern Louisiana (11/18/15)

#### Blocks

Season: 1 vs. Idaho State (11/23/18)

Career: 2 vs. High Point (11/27/15)

#### Turnovers

Season: 1 vs. Alabama State (12/5/18)

Career: 3, 2x, last vs. Alabama State (11/24/15)

#### Minutes

Season: 4 vs. Alabama State (12/5/18)

Career: 19 vs. Alabama State (11/24/15)

#### Miscellaneous

	Career	18-19
Double-Doubles:	1	-
Double Figure Points:	1	-
Double Figure Rebounds:	1	-
Led Team In Points/Rebs:	0/1	-
20+ Points:	-	-

### 2018-19 GAME-BY-GAME

Opponent	Date	gs	min	Total fg-fga	pct	3-Pointers 3fg-fga	pct	Free throws ft-fa	pct	Rebounds off def tot	avg	pf	a	t/o	blk	stl	pts	avg
APPALACHIAN ST.	11/11/18	0	0-0	.000	0-0	.000	0-0	.000	0-0	0 0 0	0.0	0	0	0	0	0	0	0.0
WESTERN CARO.	11/14/18	1	0-0	.000	0-0	.000	0-0	.000	0-0	0 1 1	0.5	0	0	0	0	0	0	0.0
vs IDAHO STATE	11/23/18	2	1-1	1.000	0-0	.000	0-0	.000	0-0	0 1 1	0.7	0	0	0	1	0	2	0.7
ALABAMA ST.	12/05/18	4	0-1	.000	0-0	.000	0-0	.000	0-0	1 1 2	1.0	1	0	1	0	0	0	0.5
KENNESAW ST.	12/16/18	2	0-1	.000	0-0	.000	0-0	.000	0-0	0 2 2	1.2	0	0	0	0	0	0	0.4
WOFFORD	12/30/18	1	0-1	.000	0-0	.000	0-0	.000	0-0	0 0 0	1.0	0	0	0	0	0	0	0.3
NO. 2 NOTRE DAME	01/06/19	3	0-1	.000	0-0	.000	0-0	.000	0-0	1 0 1	1.0	0	0	0	0	1	0	0.3
<b>Totals</b>		0	13	1-5	.200	0-0	.000	0-0	.000	2 5 7	1.0	1	0	1	1	1	2	0.3

Games played: 7

Minutes/game: 1.9

Points/game: 0.3

FG Pct: 20.0

Rebounds/game: 1.0

Turnovers/game: 0.1

Steals/game: 0.1

Blocks/game: 0.1

## TV/RADIO ROSTER



**Daijah  
Jefferson**  
F • 6-2 • r-Fr.

00



**Jasmine  
Carson**  
G • 5-10 • Fr.

2



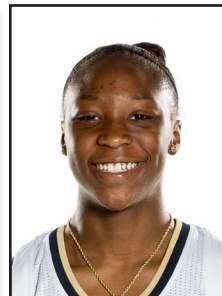
**Anne  
Diouf**  
F • 6-4 • r-So.

4



**Elizabeth  
Balogun**  
G • 6-1 • Fr.

5



**Kondalia  
Montgomery**  
G • 5-7 • Fr.

12



**Lorela  
Cubaj**  
F • 6-4 • So.

13



**Elizabeth  
Dixon**  
F • 6-5 • Fr.

22



**D'asia  
Gregg**  
F • 6-2 • Fr.

23



**Chanin  
Scott**  
G • 6-0 • Jr.

24



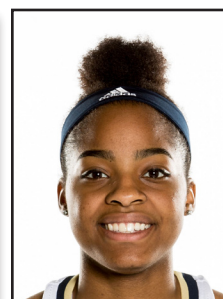
**Lotta-Maj  
Lahtinen**  
G • 5-7 • Fr.

31



**Francesca  
Pan**  
G • 6-1 • Jr.

33



**Kierra  
Fletcher**  
G • 5-9 • So.

41



**Martine  
Fortune**  
F • 6-3 • Sr.

44



**MaChelle Joseph**  
Head Coach



**Mark Simons**  
Assistant Coach



**Sasha Palmer**  
Assistant Coach



**Jonneshia Pineda**  
Assistant Coach



**Metra Walthour**  
Director of Operations



**Brittini Oliver**  
Asst. Director of Operations



**Felicia Tucker**  
Director of Player Personnel



**Scott McDonald**  
Player Development Coach



**Rachel Matthews**  
Athletic Trainer